

THIS IS NOT THE FULL PLAN SET!
CONDENSED VERSION - 7/14/2021 KMT

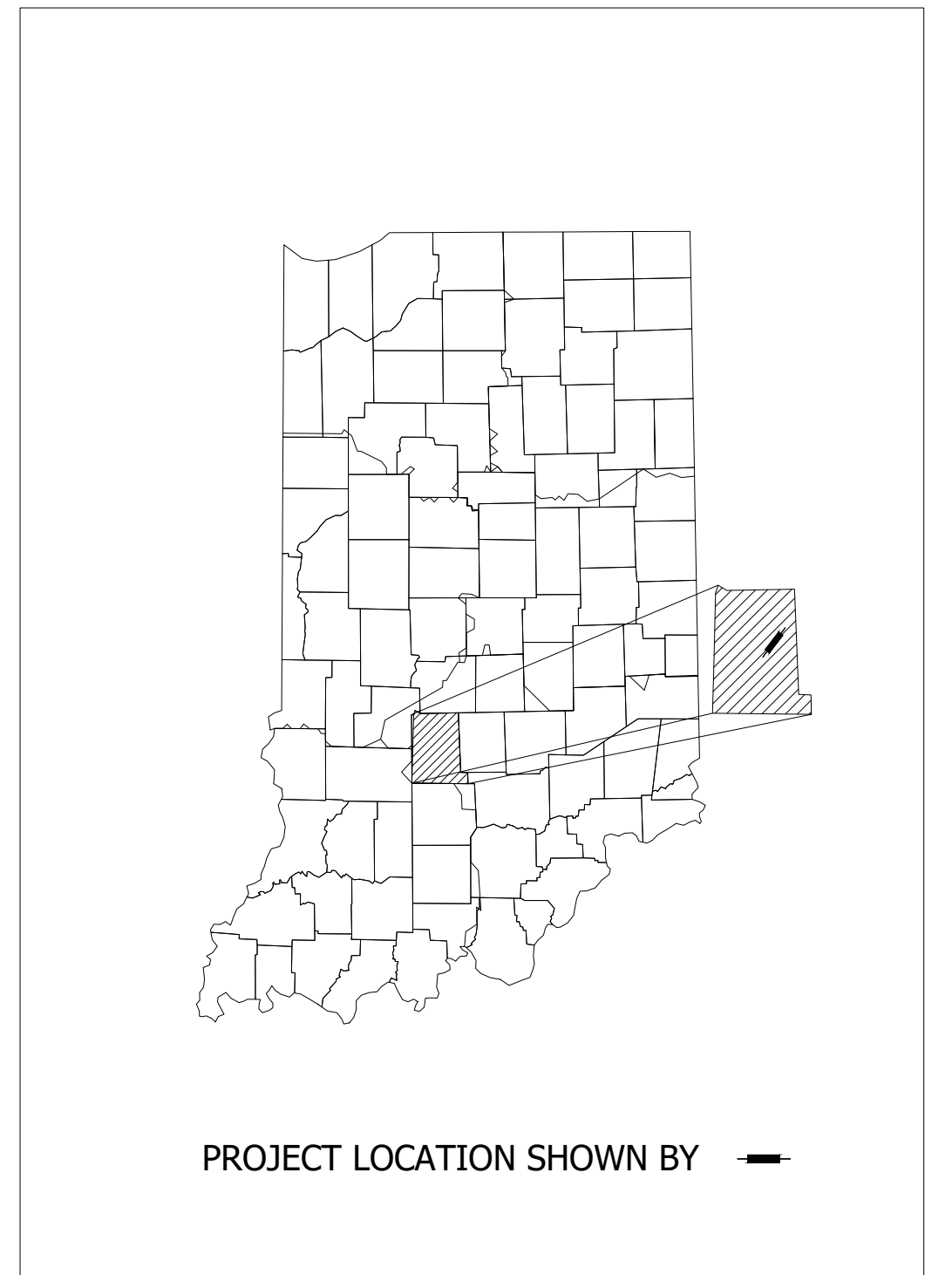
MONROE COUNTY

BABY CREEK

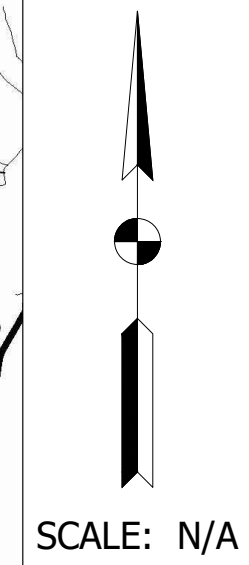
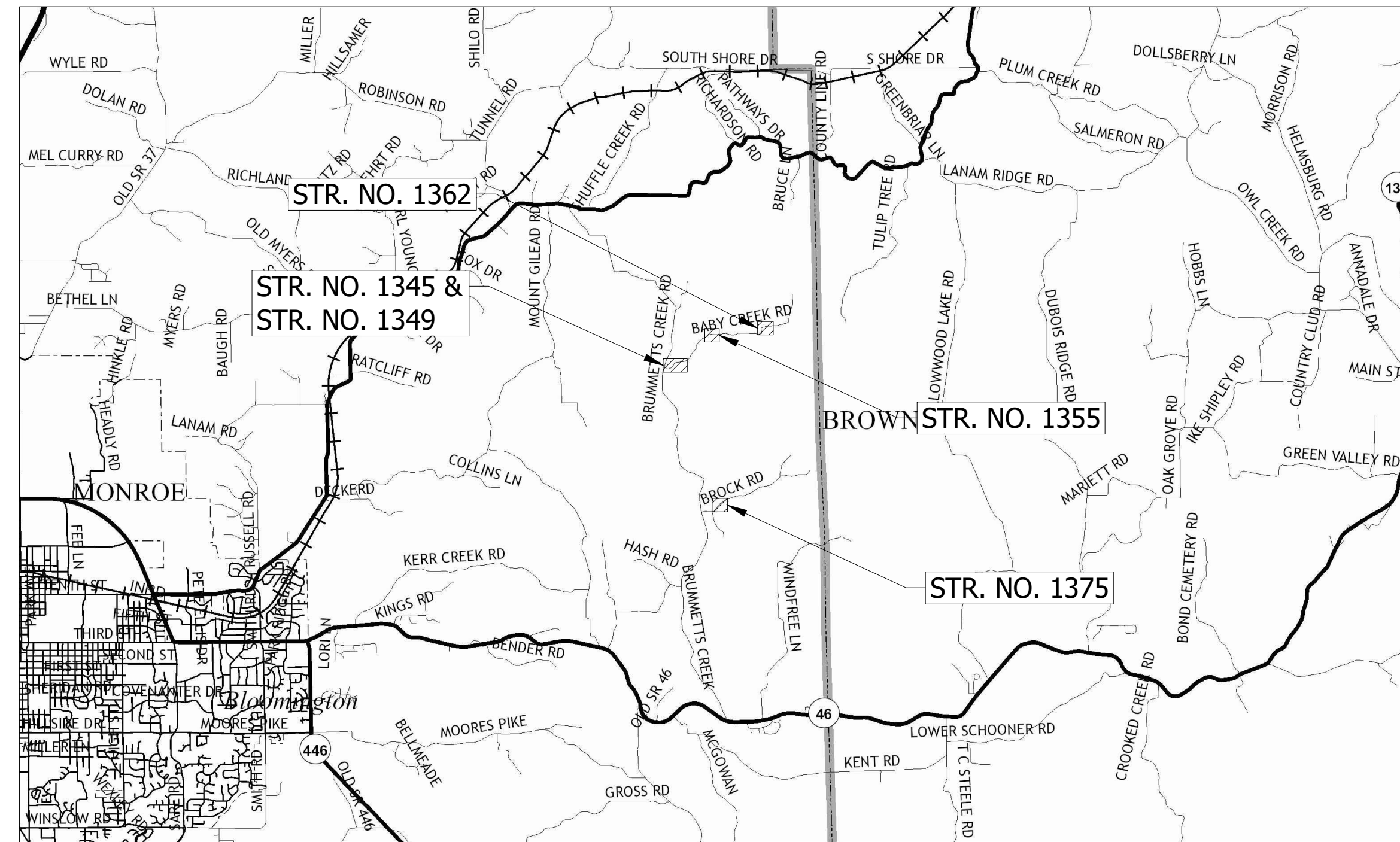
STRUCTURE REPLACEMENT PLANS

TRAFFIC DATA		
A.A.D.T.	()	N/A V.P.D.
A.A.D.T.	()	N/A V.P.D.
D.H.V.	()	N/A V.P.H.
DIRECTIONAL DISTRIBUTION		N/A %
TRUCKS		N/A % A.A.D.T.
		N/A % D.H.V.

DESIGN DATA		
DESIGN SPEED		30 M.P.H.
PROJECT DESIGN CRITERIA		AASHTO LOW VOLUME ROAD
FUNCTIONAL CLASSIFICATION		LOCAL ROAD
RURAL/URBAN		RURAL
TERRAIN		ROLLING
ACCESS CONTROL		FULL



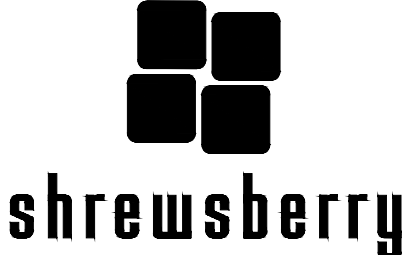
STREAM CROSSING REPLACEMENTS
ALONG BABY CREEK ROAD AND
BROCK ROAD.



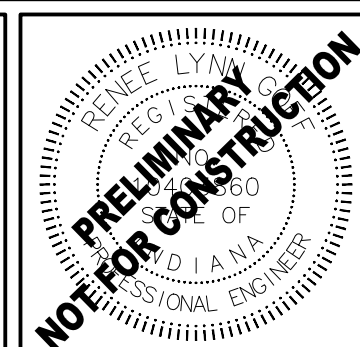
LOCATION MAP
MONROE COUNTY

Sheet: 17-0230-01.dwg 2:10 PM 5/19/2021 S:\PROJECT FILES\2021\17-0230\CADD\DESIGN\SHEET SETS\170230 TITLE.DWG

REVISIONS		
DATE	REVISION	BY



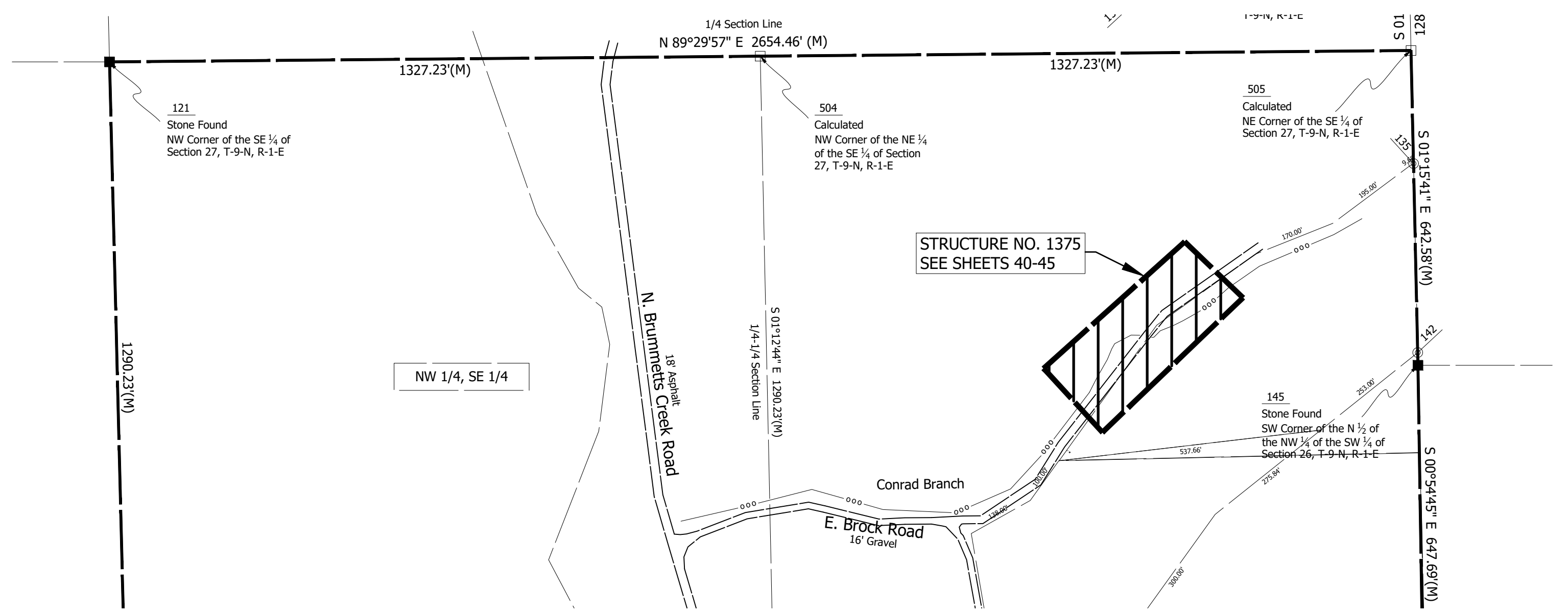
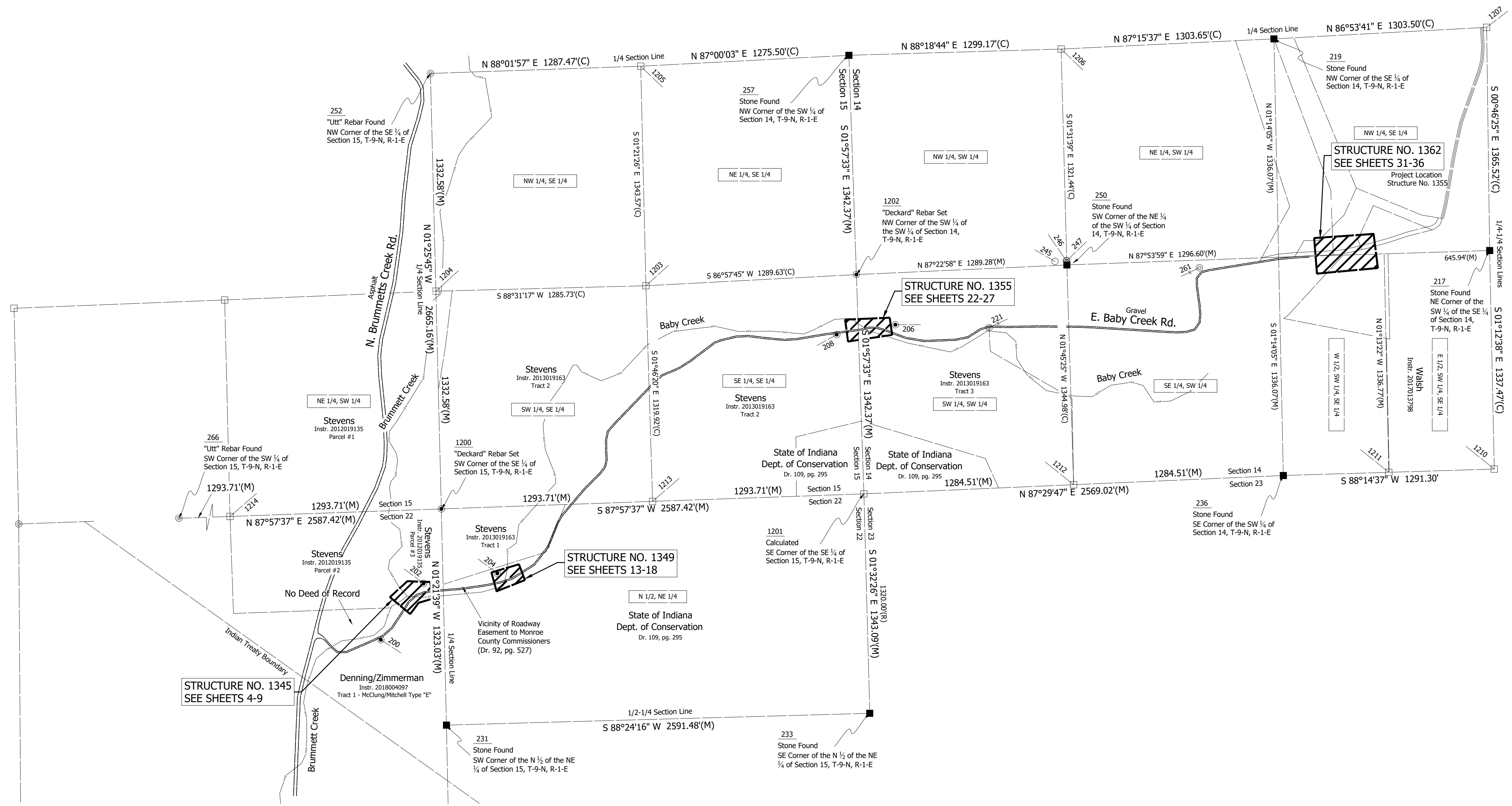
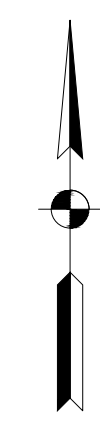
7321 SHADELAND STATION
INDIANAPOLIS IN 46256
(p) 317.841.4799 (f) 317.841.4790
shrewsusa.com



RECOMMENDED FOR APPROVAL	
DESIGN ENGINEER	DATE
DESIGNED: <u>BAB</u>	DRAWN: <u>BAB</u>
CHECKED: <u>RLG</u>	CHECKED: <u>JER</u>

MONROE COUNTY BABY CREEK STRUCTURE REPLACEMENT
TITLE SHEET

DESIGNATION
N/A
CONSULTANT PROJECT NUMBER
17-0230
SHEET
1 OF 50



REVISIONS		
DATE	REVISION	BY

shrewsberry

7321 SHADELAND STATION
 INDIANAPOLIS IN 46256
 (p) 317.841.4799 (f) 317.841.4790
 shrewsusas.com

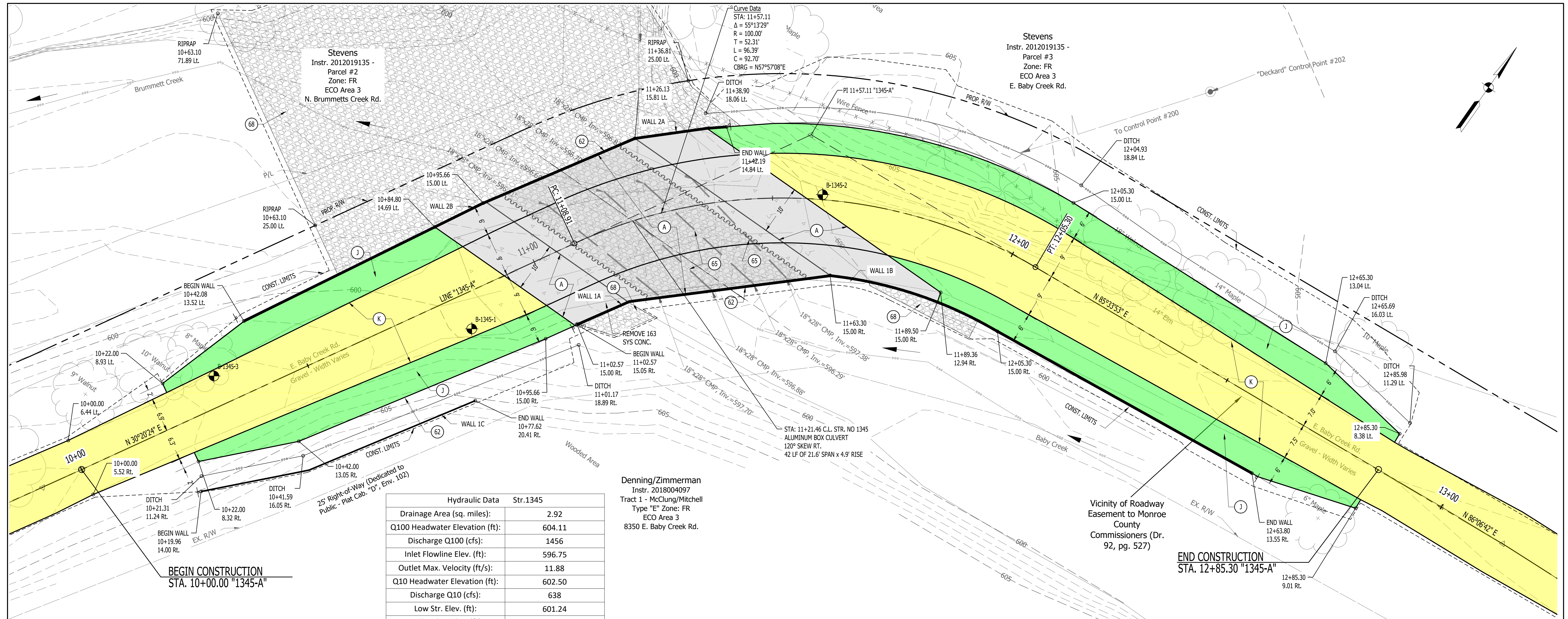


RECOMMENDED FOR APPROVAL	DESIGN ENGINEER	DATE
DESIGNED: <u>BAB</u>	DRAWN: <u>BAB</u>	
CHECKED: <u>RLG</u>	CHECKED: <u>JER</u>	

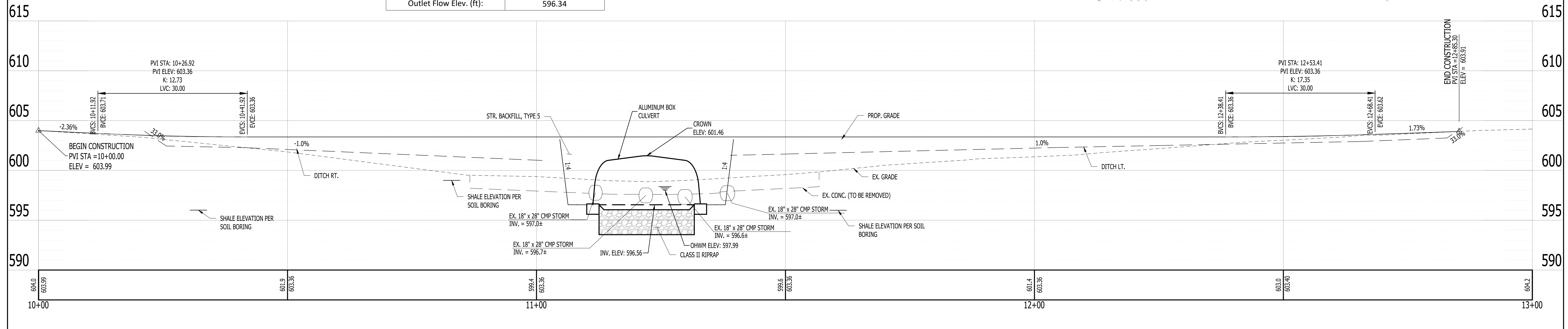
MONROE COUNTY	
BABY CREEK STRUCTURE REPLACEMENT	
SHEET INDEX	

DESIGNATION	N/A
CONSULTANT PROJECT NUMBER	17-0230
SHEET	3 OF 50

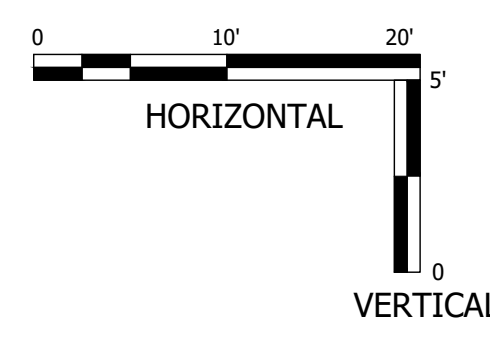
Plan: 2/10/2020 2:11 PM S:\PROJECT FILES\2017\17-0230\CADD\DESIGN\SHEET SETS\170230 INDEX.DWG
 Shrewsberry.cad



Hydraulic Data		Str.1345
Drainage Area (sq. miles):		2.92
Q100 Headwater Elevation (ft):		604.11
Discharge Q100 (cfs):		1456
Inlet Flowline Elev. (ft):		596.75
Outlet Max. Velocity (ft/s):		11.88
Q10 Headwater Elevation (ft):		602.50
Discharge Q10 (cfs):		638
Low Str. Elev. (ft):		601.24
Outlet Flow Elev. (ft):		596.34



REVISIONS		
DATE	REVISION	BY



7321 SHADELAND STATION
INDIANAPOLIS IN 46256
(P) 317.841.4799 (F) 317.841.4790
shrewsus.com



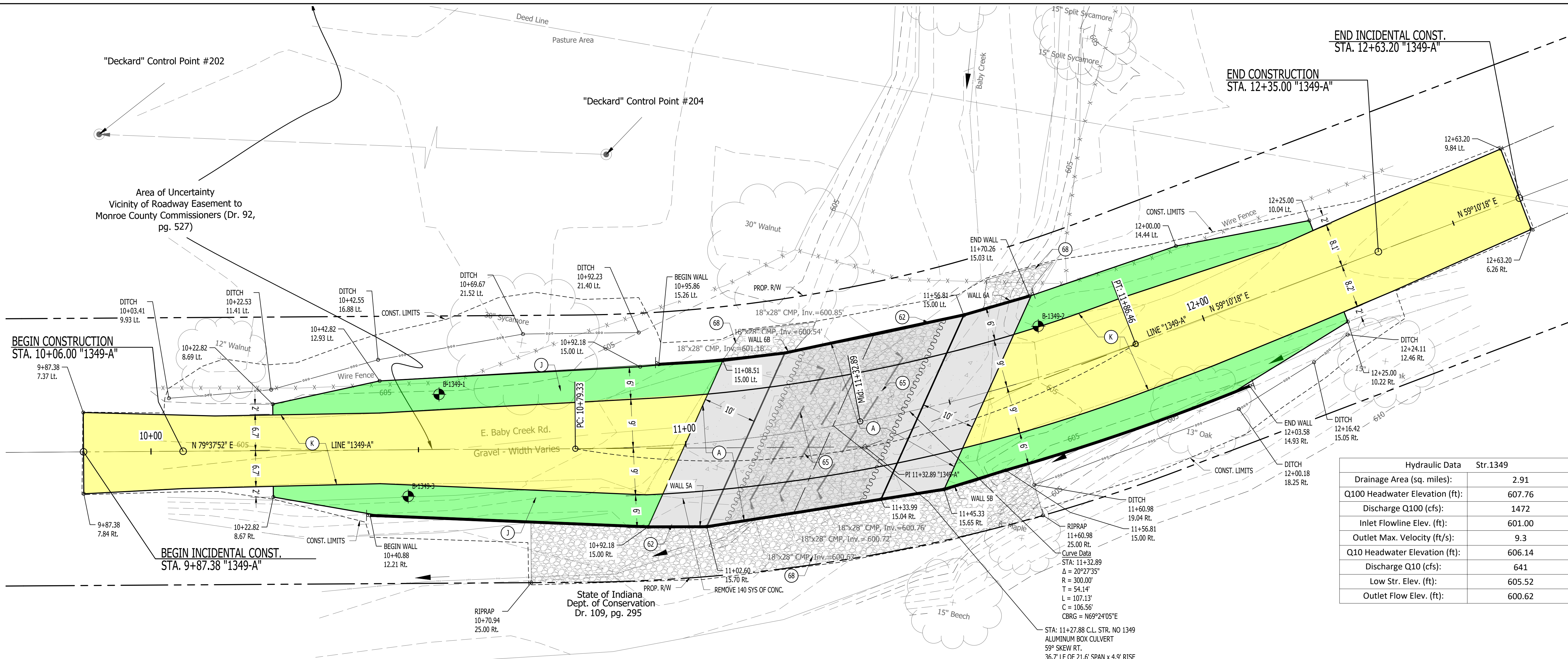
RECOMMENDED FOR APPROVAL	DESIGN ENGINEER	DATE
DESIGNED: BAB	DRAWN: BAB	
CHECKED: RLG	CHECKED: JER	

MONROE COUNTY
BABY CREEK STRUCTURE REPLACEMENT

STRUCTURE 1345-E. BABY CREEK RD.
PLAN AND PROFILE

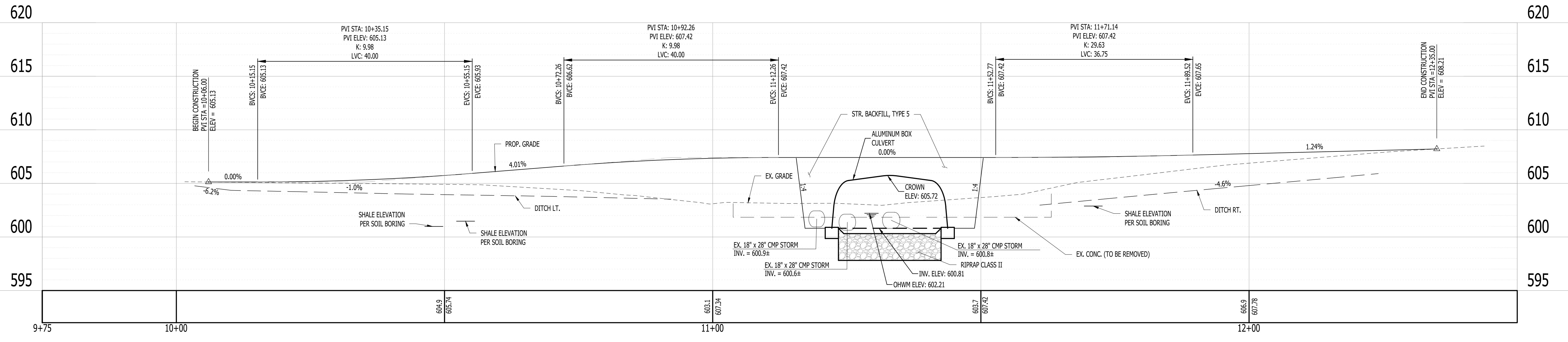
DESIGNATION	
	N/A
CONSULTANT PROJECT NUMBER	
	17-0230
SHEET	
	8 OF 50

Sheet: 17-0230-17-0230-CADD(DWG)DESIGN(SHEET)SETS\170230_1345_P&P.DWG

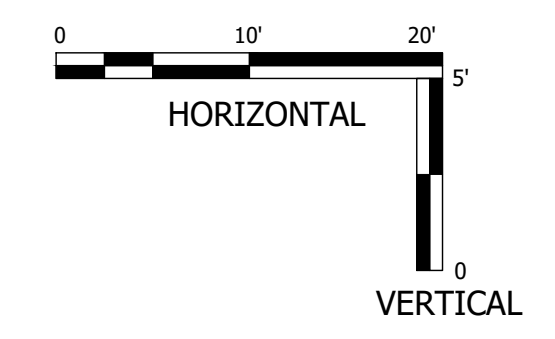


Hydraulic Data		Str.1349
Drainage Area (sq. miles):		2.91
Q100 Headwater Elevation (ft):		607.76
Discharge Q100 (cfs):		1472
Inlet Flowline Elev. (ft):		601.00
Outlet Max. Velocity (ft/s):		9.3
Q10 Headwater Elevation (ft):		606.14
Discharge Q10 (cfs):		641
Low Str. Elev. (ft):		605.52
Outlet Flow Elev. (ft):		600.62

RIPRAP
11+60.98
25.00 Rt.
Curve Data
STA: 11+32.89
Δ = 20°27'35"
R = 300.00'
T = 54.14'
L = 107.13'
C = 106.56'
CBRG = N69°24'05"E
STA: 11+27.88 C.L. STR. NO 1349
ALUMINUM BOX CULVERT
59° SKEW RT.
36.7' LF OF 21.6' SPAN x 4.9' RISE



REVISIONS		
DATE	REVISION	BY



7321 SHADELAND STATION
INDIANAPOLIS IN 46256
(p) 317.841.4799 (f) 317.841.4790
shrewsus.com



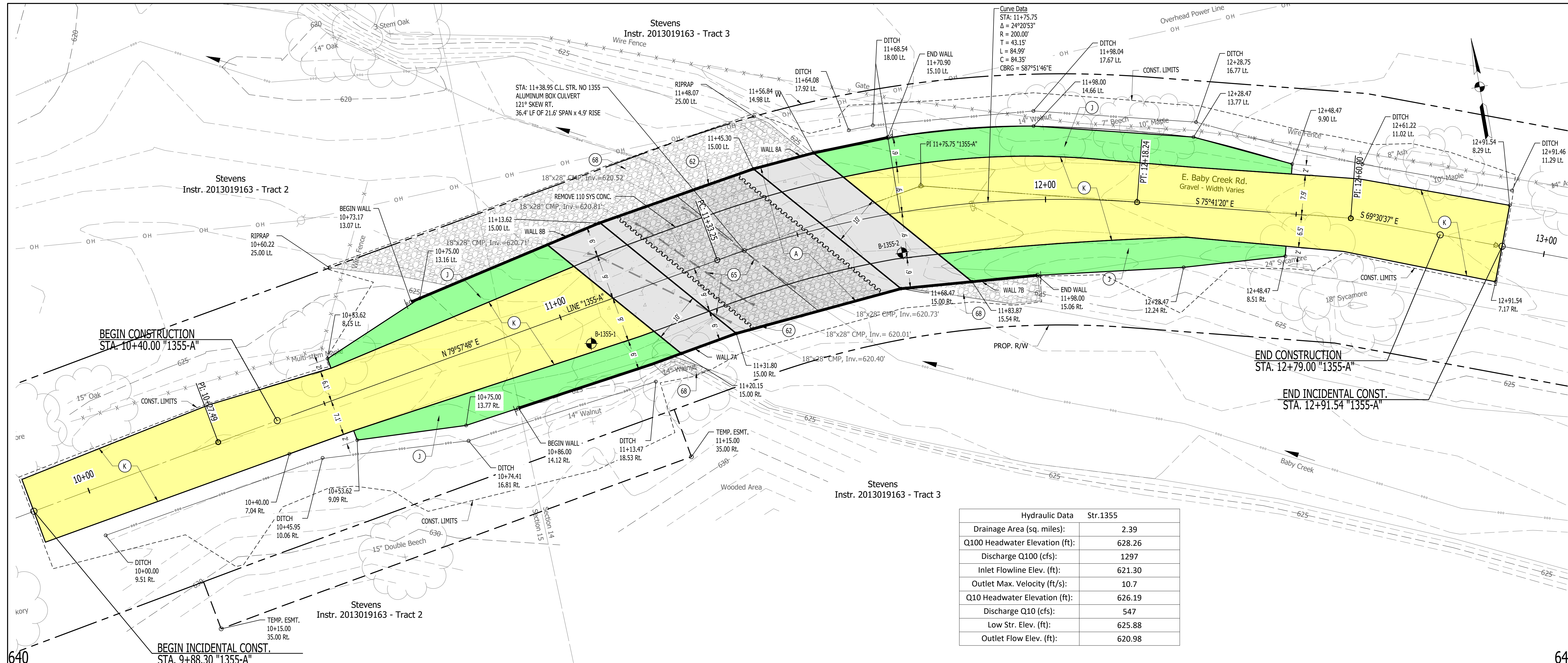
RECOMMENDED FOR APPROVAL	DESIGN ENGINEER	DATE
DESIGNED: <u>BAB</u>	DRAWN: <u>BAB</u>	
CHECKED: <u>RLG</u>	CHECKED: <u>JER</u>	

MONROE COUNTY
BABY CREEK STRUCTURE REPLACEMENT

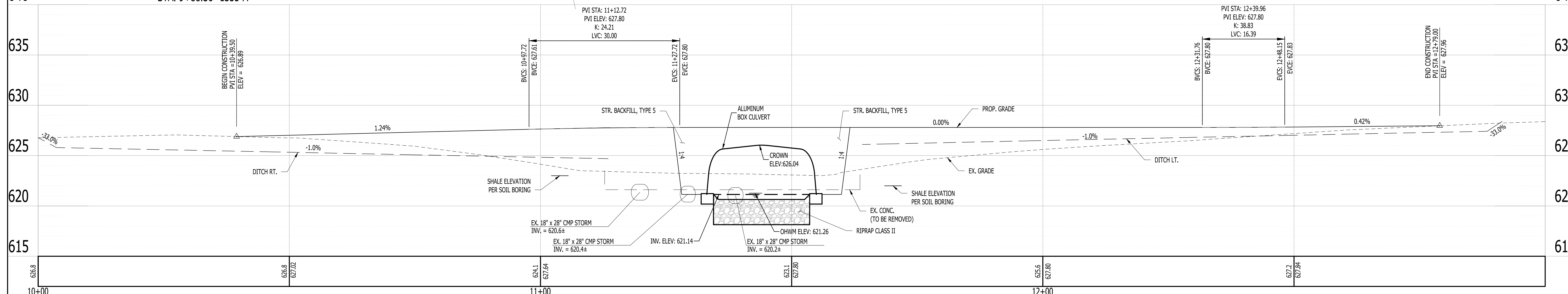
STRUCTURE 1349-E. BABY CREEK RD.
PLAN AND PROFILE

DESIGNATION	
	N/A
	CONSULTANT PROJECT NUMBER
	17-0230
	SHEET
	17 OF 50

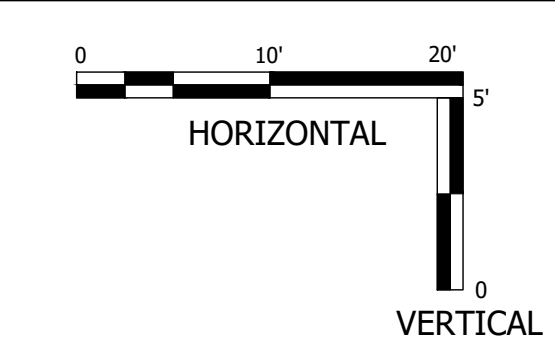
Bear Bell 2/10/2020 2:13 PM S:\PROJECT FILES\2017\17-0230\CADD\DESIGN SHEET SETS\170230_1349_P&P.DWG
 Shrewsberry.com



Hydraulic Data		Str.1355
Drainage Area (sq. miles):		2.39
Q100 Headwater Elevation (ft):		628.26
Discharge Q100 (cfs):		1297
Inlet Flowline Elev. (ft):		621.30
Outlet Max. Velocity (ft/s):		10.7
Q10 Headwater Elevation (ft):		626.19
Discharge Q10 (cfs):		547
Low Str. Elev. (ft):		625.88
Outlet Flow Elev. (ft):		620.98



REVISIONS		
DATE	REVISION	BY



shrewsberry

7321 SHADELAND STATION
 INDIANAPOLIS, IN 46256
 (P) 317.841.4799 (F) 317.841.4790
 shrewsus.com



RECOMMENDED FOR APPROVAL	DESIGN ENGINEER	DATE
DESIGNED: <u>BAB</u>	DRAWN: <u>BAB</u>	
CHECKED: <u>RLG</u>	CHECKED: <u>JER</u>	

MONROE COUNTY
 BABY CREEK STRUCTURE REPLACEMENT

STRUCTURE 1355-E. BABY CREEK RD.
 PLAN AND PROFILE

DESIGNATION	
N/A	CONSULTANT PROJECT NUMBER
17-0230	SHEET
26 OF 50	

Plan: 2/10/2020 2:15 PM S:\PROJECT FILES\2017\17-0230\CADD\DESIGN SHEET SETS\170230_1355_P&P.DWG
 Shrewsberry.com

Shoobridge
Instr. 201009087
Helen Martin Minor Sub. - Lot 2
(Plat Cab. "D", Env. 85)
Zone: FR
ECO Area 3
9423 E. Baby Creek Rd.

Shoobridge
Instr. 2008014926
Helen Martin Minor Sub. - Lot 3
(Plat Cab. "D", Env. 85)
Zone: FR
ECO Area 3
9521 E. Baby Creek Rd.

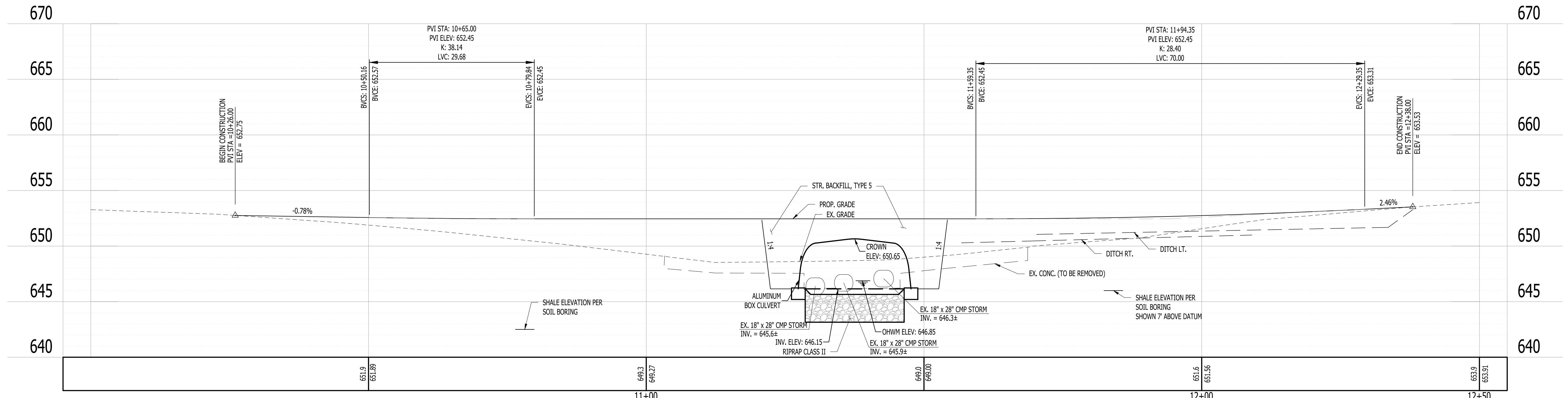
Shoobridge
Instr. 2008014926
Helen Martin Minor Sub. - Lot 3
(Plat Cab. "D", Env. 85)
Zone: FR
ECO Area 3
9521 E. Baby Creek Rd.

END CONSTRUCTION
STA. 12+38.00 "1362-A"

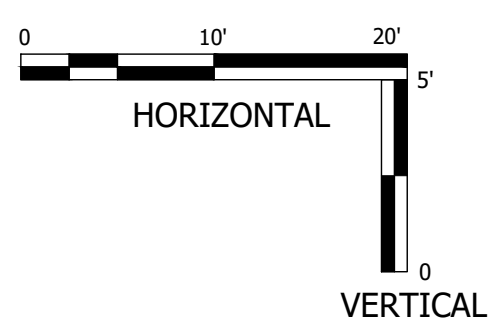
BEGIN CONSTRUCTION
STA. 10+26.00 "1362-A"

BEGIN INCIDENTAL CONST.
STA. 9+90.20 "1362-A"

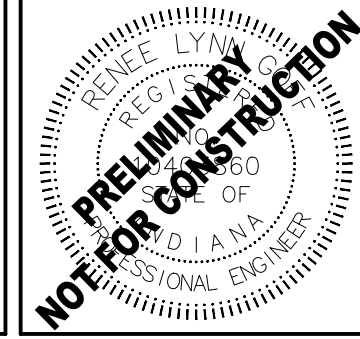
Hydraulic Data		Str.1362
Drainage Area (sq. miles):		1.98
Q100 Headwater Elevation (ft):		653.37
Discharge Q100 (cfs):		1157
Inlet Flowline Elev. (ft):		646.35
Outlet Max. Velocity (ft/s):		12.1
Q10 Headwater Elevation (ft):		651.10
Discharge Q10 (cfs):		491
Low Str. Elev. (ft):		650.45
Outlet Flow Elev. (ft):		645.95



REVISIONS		
DATE	REVISION	BY



7321 SHADELAND STATION
INDIANAPOLIS IN 46256
(p) 317.841.4799 (f) 317.841.4790
shrewsus.com



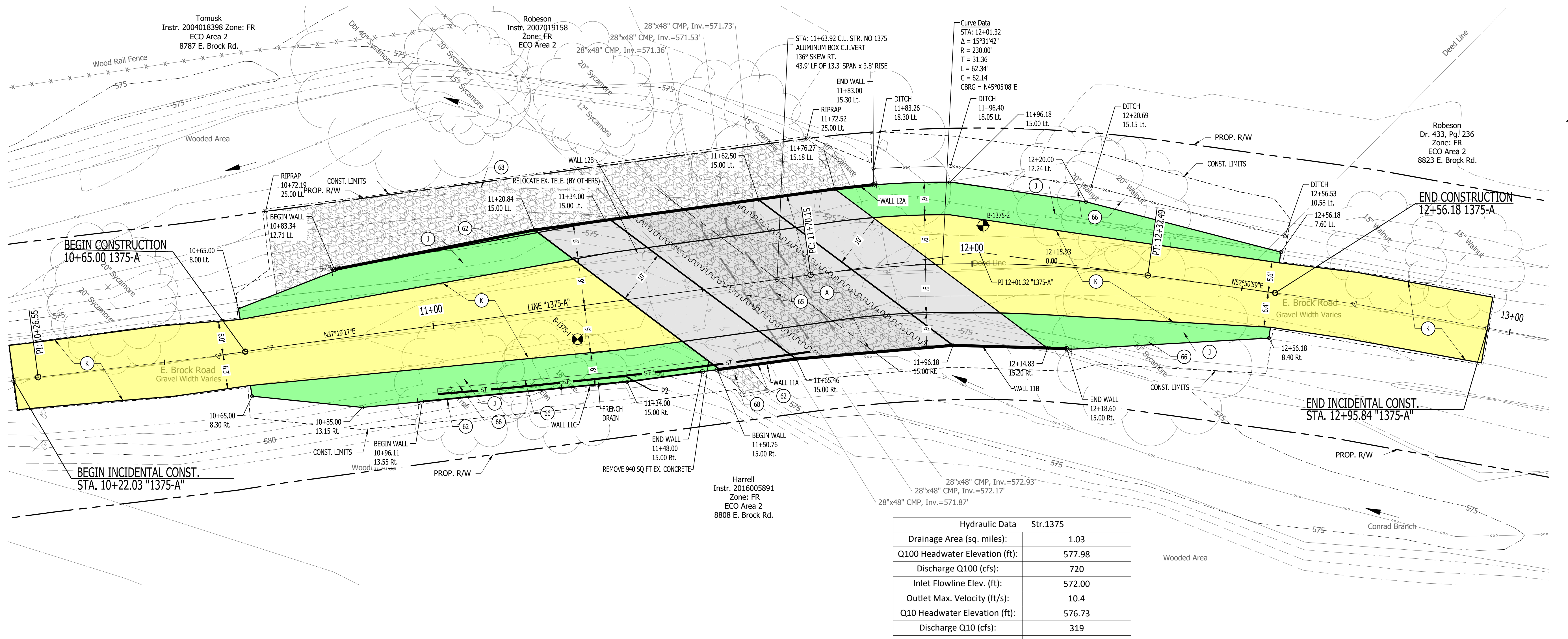
RECOMMENDED FOR APPROVAL	
DESIGNED: <u>BAB</u>	DRAWN: <u>BAB</u>
CHECKED: <u>RLG</u>	CHECKED: <u>JER</u>

MONROE COUNTY
BABY CREEK STRUCTURE REPLACEMENT

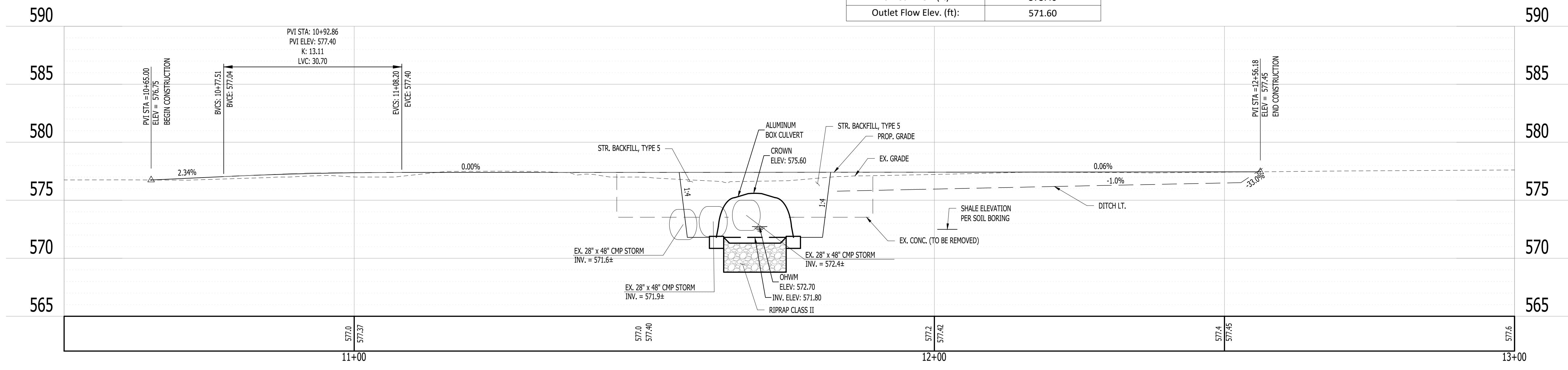
STRUCTURE 1362-E. BABY CREEK RD.
PLAN AND PROFILE

DESIGNATION	
N/A	CONSULTANT PROJECT NUMBER
17-0230	SHEET
35 OF 50	

Plan: 2/10/2020 2:17 PM S:\PROJECT FILES\2017\17-0230\CADD\DESIGN\SHEET SETS\170230_1362_P&P.DWG Shrewsberry.com

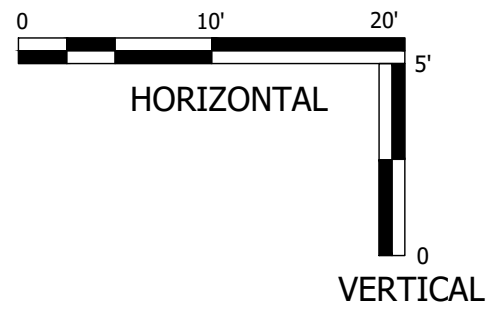


Hydraulic Data Str.1375	
Drainage Area (sq. miles):	1.03
Q100 Headwater Elevation (ft):	577.98
Discharge Q100 (cfs):	720
Inlet Flowline Elev. (ft):	572.00
Outlet Max. Velocity (ft/s):	10.4
Q10 Headwater Elevation (ft):	576.73
Discharge Q10 (cfs):	319
Low Str. Elev. (ft):	575.40
Outlet Flow Elev. (ft):	571.60



Brian Bell 2/10/2020 2:19 PM S:\PROJECT FILES\2017\17-0230\CADD\DESIGN\SHEET SETS\170230_1375 PRP.DWG
 Shrewsberry,cd

REVISIONS		
DATE	REVISION	BY



7321 SHADELAND STATION
 INDIANAPOLIS IN 46256
 (p) 317.841.4799 (f) 317.841.4790
 shrewsus.com



APPROVED FOR APPROVAL	DESIGN ENGINEER	DATE
DESIGNED: <u>BAB</u>	DRAWN: <u>BAB</u>	
CHECKED: <u>RLG</u>	CHECKED: <u>JER</u>	

MONROE COUNTY
BABY CREEK STRUCTURE REPLACEMENT
 STRUCTURE 1375-BROCK RD.
 PLAN AND PROFILE

DESIGNATION	N/A
CONSULTANT PROJECT NUMBER	17-0230
SHEET	44 OF 50