



AGENDA
SURVEYOR REVIEW BOARD
HYBRID MEETING
Via Zoom App
Tuesday, February 21, 2023

- I. Call to Order**
- II. Approval of agenda**
- III. Approval of minutes from November 22, 2022**
- IV. New Business**
 - a. Office Update**
- V. Certification of corners:**
 - a. County Surveyor Perpetuation: Per_S21**, VanBu_M07, VanBu_U17, VanBu_U19**, VanBu_U21, VanBu_U23*, VanBu_U25, InCr_U01, VanBu_Y17, Per_A17, VanBu_Y19* & Per_A19**
 - b. Corner Documentation Program:**
 - c. Professional Services Agreement:**
- VI. Public input**
- VII. Adoption of next meeting date**
- VIII. Adjournment**

**Has no previous certification*

*** Tabled*

Zoom Meeting Information

<https://monroecounty-in.zoom.us/j/84648553923?pwd=VmdvUGl1MFR5NzU3VmhXK1JiejZzUT09>

Meeting ID: 846 4855 3923

Password: 668366

Dial by your location

+1 312 626 6799 US (Chicago)

Meeting ID: 846 4855 3923

The meeting is open to the public. Dates are subject to change.

For additional information, please call the Office of the Monroe County Surveyor at (812) 349-2570.

Anyone who requires an auxiliary aid or service for effective communication, or a modification of policies or procedures to participate in a program, service, or activity of Monroe County, should contact Monroe County Title VI Coordinator, (812) 349-2553, as soon as possible but no later than forty-eight (48) hours before the scheduled event.

Individuals requiring special language services should, if possible, Government Title VI Coordinator at least seventy-two (72) hours prior to the date on which the services will be needed.

Survey Utility



MINUTES
SURVEYOR REVIEW BOARD
HYBRID MEETING
Via Zoom App
Tuesday, November 22, 2022

MEMBERS PRESENT: Eric Deckard, Rachel Oser

MEMBERS ABSENT: Todd Borgman

STAFF: Trohn Enright-Randolph, Jason George, Donna Barbrick (Secretary)

- I. Call to Order.** Trohn called the meeting to order.
- II. Approval of agenda.** Motion to approve by Rachel Oser; second by Eric Deckard.
VOTE: YES (unanimous).
- III. Approval of minutes from October 25, 2022.** Motion to approve by Oser; second by Deckard. **VOTE: YES (unanimous). Minutes approved.**
- IV. New Business**
 - a. Office Update.** Trohn gave a quick office update. He said we have a good crew and are moving forward. He talked about a recent presentation at the GIS Day about the way that we do section corner work, collect coordinates and improve coordinates that are supposed to be only representational in our GIS system. He said he got some good feedback from a surveyor who attended.
 - b. Approval of 2023 Surveyor Review Board Schedule.** Trohn said this is more or less a placeholder so that we can reserve the room. **Motion by Deckard to approve. VOTE: YES (unanimous). Motion carried.**
- V. Certification of corners:**
 - a. County Surveyor Perpetuation: Per_G07, Per_Q21, Per_Q23 & Per_S21***
 - i. Per_G07.** Trohn gave an overview of the corner and tie sheet. Oser had questions about the stone and about the witnesses. **Motion to approve by Oser; second by Deckard. VOTE: YES (unanimous).**
 - ii. Per_Q21.** Potter cap, with some of the witnesses the same as previous tie sheet (year 2000). Trohn said all of the "1999s" on the tie sheet would be changed to "2000s." **Motion to approve by Deckard; second by Oser. VOTE: YES (unanimous). Trohn asked for a motion that would include the requested edits. Motion by Oser to approve Per_Q21 with the following edits: for Witness B, add the reference to the 2000 monument record and change the year 1999 to 2000; for Witness C change the 1999 to 2000 and for Witness D change the 1999 to 2000 and also add the reference to the witness from the 2000 monument record. Second by Deckard. VOTE: YES (unanimous).**
 - iii. Per_Q23.** Trohn said Kevin Enright previously tied off this in 2009. Deckard had a question about a witness and a bearing on the new tie. There was a discussion of bearings being off sometimes and the quirks of the Javad compass. Trohn suggested including a scan of the field book page being referenced. He suggested putting a note about different bearings collected that do not agree with the older tie sheet. Oser

suggested edits for the tie sheet regarding Witnesses B and C. **Trohn suggested a motion to approve Per_Q23 with the conditions of updating Witnesses B and C as discussed and checking Bearing C and writing a note if the bearing differs more than 5 degrees from the 2009 monument witness monument record Witness D and change the note about the Leica. Deckard made a motion to approve with said conditions. Second by Oser. VOTE: YES (unanimous).**

- iv. **Per_S21.** Trohn noted this corner was not previously certified. He talked about the theory of location. Deckard said this area has some colorful history. He asked for time to compare surveys. Trohn said he could send an email to Todd Borgman about the corner and recent surveys. Oser talked about a witness that is on the tie sheet and recording a measurement. There was a discussion of accessing recorded surveys for county business and for review board business. Oser had a comment about removing “geodetic coordinates” from the tie sheet template. Deckard had a question about the fencing. Jason George said the fence by this corner was a hodge podge of new and old sections. **Deckard motioned to table approval of Per_S21. Second by Oser. VOTE: YES (unanimous).**

b. Corner Documentation Program: Blm_W01-Wash_W25

Trohn thanked Eric for going through the program. He said Wash_W25 and Blm_W01 are common corners. Deckard said we were conducting a survey in the area and we were looking for this particular stone and uncovered it. There was a discussion of getting coordinates since a large tree is engulfing the monument. There was a discussion of the value of sketches on the tie sheets. This led to a discussion of making edits to the documentation forms. **Motion by Oser to approve Blm_W01 and Wash_W25. Second by Deckard. VOTE: YES-1, RECUSAL-1. Motion carried.**

c. Professional Services Agreement (none)

- VI. Public input (none)**
VII. Adoption of next meeting date. Motion by Oser to adopt December 27 as the next meeting date; second by Deckard. VOTE: YES (unanimous).
VIII. Adjournment

Minutes approved: _____

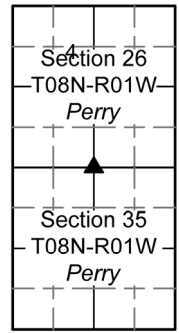
MCSR_B_Packet
PENDING

MONUMENT RECORD

02/21/2023
 Corner ID: **Per_S21**

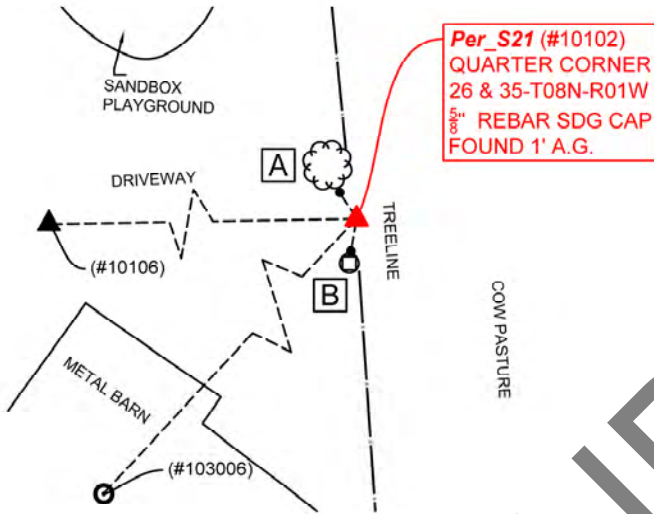
Quarter Corner

Sections 26 & 35- T08N-R01W, 2nd P.M.
 Perry Township, Monroe County, Indiana



MONUMENT: Describe monument set or found (Include material type, scribing, distance above/below grade, dimensions.)
 5/8" Rebar with yellow plastic cap stamped "SDG INC FIRM 0101" 1' above grade

MONUMENT LOCATION SKETCH:



All ties to new Bearing Trees (BTs) are a mag nail set in a 1-1/2" plastic washer stamped "SURVEY MARKER - DO NOT REMOVE" and hack mark at the root crown (less than 12" above ground) perpendicular to the center of the tree, unless otherwise noted. BT diameters are noted as dbh and are measured approximately 4.5' above ground. Bearings are measured from the monument to the center of the BT, distances are measured from the monument to the mag nail.

ID	BEARING	DISTANCE	DESCRIPTION
Witness A	N 33d W	4.5'	Mag nail and washer set in hack 0.2' above grade on the south side of a bifurcated (at grade) 11" white ash tree (south trunk only measured).
Witness B	S 10d W	5.0'	Mag nail and washer set 0.3' above grade on the north side of 4" x 4" x 4' wooden fence post.
MONUMENT ACCESSORIES			
Other survey grade monuments that were located in the vicinity and their relation to the monument.			
(#103006)	S 43d18'46" W	184.72'	5/8" rebar with yellow cap "SDG INC FIRM 0101" found at grade southwest of metal barn.
(#10106)	S 89d05'48" W	2611.49	Per_Q21 included herein to depict distance and bearing in survey referenced in Theory of Location (see below) a 5/8" rebar with yellow plastic cap stamped "KB POTTER RLS S 0487" found 0.1' below grade.



MONUMENT RECORD

02/21/2023
 Corner ID: **Per_S21**

Quarter Corner

Sections 26 & 35- T08N-R01W, 2nd P.M.
 Perry Township, Monroe County, Indiana

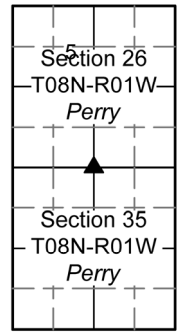


PHOTO IDENTIFIED: Photo Date: 7/22/2022



Photo Orientation & Description: Per_S21 from above



Photo Orientation & Description: Looking east at Per_S21 and Witnesses A & B

ORIGINAL OR SUBSEQUENT SURVEY EVIDENCE FOUND: Include, search area or areas, search procedure, etc.
 Date of Field work/Search: 7/22/2022 By: JG & HJ Monument Found: Rebar with SDG Cap BTs or Reference Objects Found: N/A
 Project #: Perry Preservation Field Book: 54/70 Equipment: The basis of bearings is Grid North System NAD83(2011)/Indiana West NAVD 88, Epoch 2010.0000, geoid12b_conus.db3, US Survey Feet, derived from GPS observations utilizing the Indiana Real-Time Network (INCORS). Coordinate data was collected with a Javad Triumph LS Network Rover. Coordinates are available upon request. Distances to witness ties were collected with a Leica Disto laser distance meter. Bearings to witness ties were collected with the internal magnetic compass of the Javad Triumph LS and were automatically adjusted to grid north and are approximately shown hereon for reference. Priority should be given to provided distances over bearings. Notes: All witness photos on file in the Monroe County Surveyors Office.

OTHER EVIDENCE: Describe corner location relative to nearby features and how to reach the corner location – note fences, roads, timber cutting lines, mow lines, clearings, plantings, streams, topo changes, etc.
 Monument is located east of a fence line running north-south. The east side of a fence hosts livestock and the west side is the residence 5820 Handy Road. They have an oblong turnabout in the driveway, with a playground at its center. The monument is southeast of it.

MONUMENT PRESERVATION: Describe work done to preserve existing monument.
 "Protect Nearby Survey Marker" sign was set 0.5' east of the monument at 3.5' above grade. Geodetic controls were captured for the monument and witnesses (#103006) & (10106). Two other witnesses were established. Homeowner was made aware of existence of monument.

THEORY OF LOCATION: Describe the theory of location for acceptance of this monument. Include monument origin and associated uncertainty.
 The rebar was set by set by Licensed Surveyor, Todd M. Borgman (LS21200021), while performing the Morrison Type E Administrative Subdivision Final Plat (2020) on file at the Recorder's Office as 2021019410.IN. Historic research has not yet been performed to prove the validity of this monument.

MCSR_B_Packet
PENDING

MONUMENT RECORD

Corner ID: **VanBu_M07**

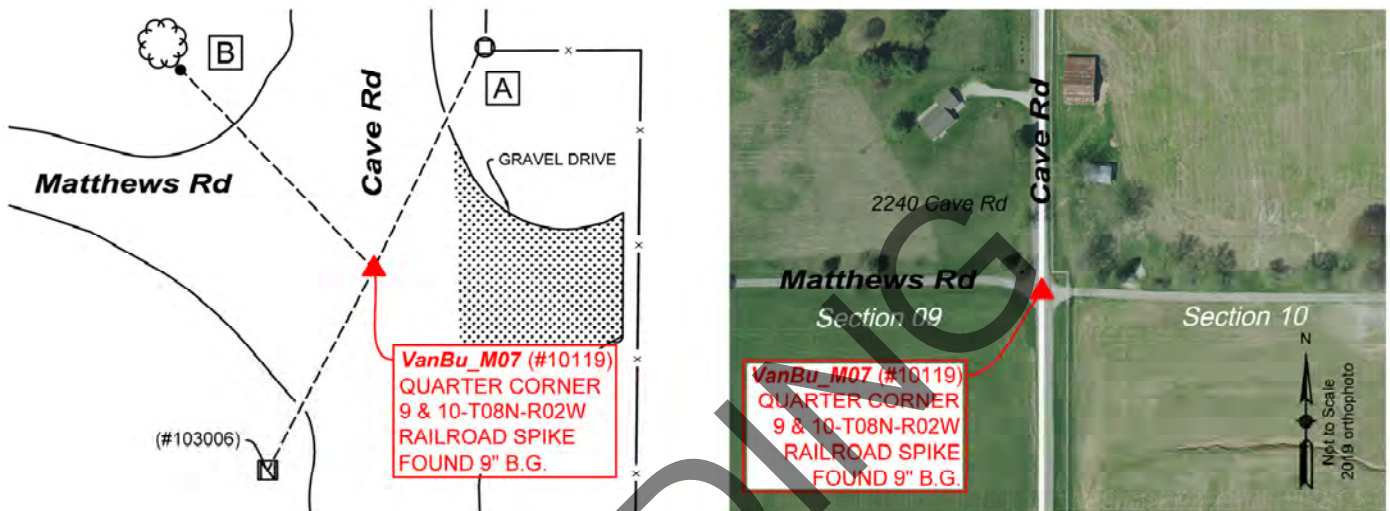
Quarter Corner

Sections 9 & 10- T08N-R02W, 2nd P.M.
 Van Buren Township, Monroe County, Indiana

		6	
Section 09		Section 10	
T08N-R02W	▲	T08N-R02W	
Van Buren		Van Buren	

MONUMENT: Describe monument set or found (Include material type, scribing, distance above/below grade, dimensions.)
 Found Railroad spike 9" below grade near centerlines of intersecting Cave Road and Matthews Road.

MONUMENT LOCATION SKETCH:



WITNESS MONUMENT TIES			
All ties to new Bearing Trees (BTs) are a mag nail set in a 1-1/2" plastic washer stamped "SURVEY MARKER - DO NOT REMOVE" and hack mark at the root crown (less than 12" above ground) perpendicular to the center of the tree, unless otherwise noted. BT diameters are noted as dbh and are measured approximately 4.5' above ground. Bearings are measured from the monument to the center of the BT, distances are measured from the monument to the mag nail.			
ID	BEARING	DISTANCE	DESCRIPTION
Witness A	N 26d E	37.6'	Cut "X" on the southwest side of 4" coated steel corner fence post 3.8' above grade.
Witness B	N 44d W	43.7'	"Protect Nearby Survey Markers" sign found 4' above grade on the south side of a 14" White Ash tree as per 1999 monument record.
MONUMENT ACCESSORIES			
Other survey grade monuments that were located in the vicinity and their relation to the monument.			
(#103006)	S 27d54'39" W	35.81'	Center of first "N" in "COMMUNICATIONS," embossed on 1.5' x 3' fiberglass telecommunications access cover flush to ground.



MCSR_B_Packet
PENDING

MONUMENT RECORD

02/21/2023
Corner ID: **VanBu_M07**

Quarter Corner

Sections 9 & 10- T08N-R02W, 2nd P.M.
Van Buren Township, Monroe County, Indiana

		7	
Section 09		Section 10	
T08N-R02W	▲	T08N-R02W	
Van Buren		Van Buren	

PHOTO IDENTIFIED: Photo Date: 11/03/2022 & 11/22/2022



Photo Orientation & Description: VanBu_M07 from above



Photo Orientation & Description: Looking northeast at VanBu_M07

ORIGINAL OR SUBSEQUENT SURVEY EVIDENCE FOUND: *Include, search area or areas, search procedure, etc.*
 Date of Field work/Search: 11/03/2022 & 11/22/2022 By: JG & HJ Monument Found: Railroad Spike BTs or Reference Objects Found:
 Witness B was found but Witnesses C & D were destroyed presumably in Cave Road extension and airport expansion respectively
 Project #: Van Buren Restoration Field Book: 55/12 Equipment: The basis of bearings is Grid North System NAD83(2011)/Indiana
 West NAVD 88, Epoch 2010.0000, geoid12b_conus.db3, US Survey Feet, derived from GPS observations utilizing the Indiana Real-
 Time Network (INCORS). Coordinate data was collected with a Javad Triumph LS Network Rover. Coordinates are available upon
 request. Distances to witness ties were collected with a 100' measuring tape. Bearings to witness ties were collected with the internal
 magnetic compass of the Javad Triumph LS and were automatically adjusted to grid north and are approximately shown hereon for
 reference. Priority should be given to provided distances over bearings. Notes: All witness photos on file in the Monroe County
 Surveyors Office.

OTHER EVIDENCE: *Describe corner location relative to nearby features and how to reach the corner location – note fences, roads, timber cutting
 lines, mow lines, clearings, plantings, streams, topo changes, etc.*
 Monument located at intersection of Cave Road and Matthews Road where the latter terminates going east at a cyclone fence
 suland owned by Monroe County Airport.

MONUMENT PRESERVATION: *Describe work done to preserve existing monument.*
 New witnesses were set. Geodetic controls were captured for the monument and Witness (#103006).

THEORY OF LOCATION: *Describe the theory of location for acceptance of this monument. Include monument origin and associated uncertainty.*
 The metal spike was previously witnessed by the Monroe County Surveyor, Kevin Enright, on July 23, 1999 and accepted by the
 Monroe County Surveyor Review Board on August 12, 1999. The 1999 Monument Record accepted the spike per a boundary survey
 by Lee Utt, Funkhouser (1982), on file at the Surveyor's Office as RSID004998. Another reference on file: Boundary Survey by Eric
 L. Deckard, John C. Krider (2018), on file at the Recorder's Office as 2018001788.IN. Historic research has not yet been performed
 to prove the validity of this monument.

CERTIFICATION:



MONUMENT RECORD State of Indiana - County of Monroe

Section: 09

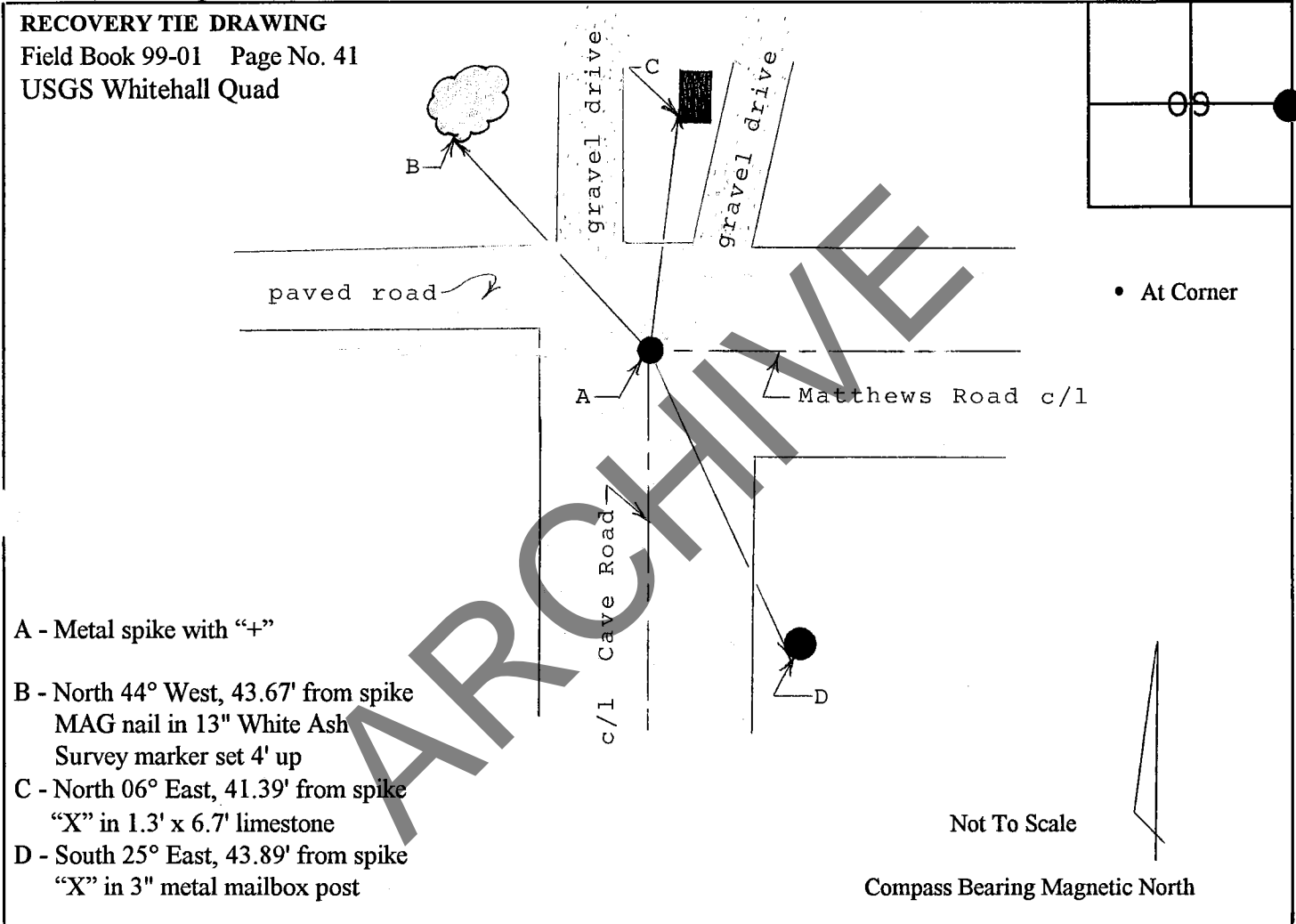
Township: 8 North

Range: 2 West

Corner ID: Van Bu M-07

Monument Description & Remarks: Uncovered Metal Spike with "+" in centerline of Matthews Road and Cave Road, at East 1/4 corner of section. Spike with Robert Conder, resident since 1949, who reported that a spike had been set over a "pointy" stone which was under the surface of the old road.

References on file in the County Surveyor's Office: "Funkhouser" survey prepared by Lee Utt, R.L.S. #S0089, dated April 20, 1982.



I, Kevin P. Enright, Monroe County Surveyor, hereby certify that this document was prepared under my direction in accordance with the provisions of Section 36-2-12-11 of the Indiana Code; and the above data is given under my hand and seal this 23rd day of July, 1999.

Kevin P. Enright



Administered by Surveyor Review Board
August 12, 1999

MCSR_B_Packet
PENDING

MONUMENT RECORD

Corner ID: **VanBu_U17**

Section Corner

Sections 23, 24, 25 & 26- T08N-R02W, 2nd P.M.
 Van Buren Township, Monroe County, Indiana

Section 23 T08N-R02W	Section 24 T08N-R02W
Section 26 T08N-R02W	Section 25 T08N-R02W

MONUMENT: Describe monument set or found (Include material type, scribing, distance above/below grade, dimensions.)
 Found 1/2" Iron Pipe flush with ground.

MONUMENT LOCATION SKETCH:



WITNESS MONUMENT TIES

All ties to new Bearing Trees (BTs) are a mag nail set in a 1-1/2" plastic washer stamped "SURVEY MARKER - DO NOT REMOVE" and hack mark at the root crown (less than 12" above ground) perpendicular to the center of the tree, unless otherwise noted. BT diameters are noted as dbh and are measured approximately 4.5' above ground. Bearings are measured from the monument to the center of the BT, distances are measured from the monument to the mag nail.

ID	BEARING	DISTANCE	DESCRIPTION
Witness A	N 25d W	30.9'	Found 19" ash tree as per 2004 monument record.
Witness B	N 54d E	31.0'	Found 10" ash tree as per 2004 monument record.
Witness C	S 60d E	9.8'	Found signs of nail 0.9' above grade on the west side of 15" hackberry tree.
Witness D	S 83d W	95.0'	Mag nail and washer set 30" above grade on the east side of a 10" black walnut tree.



MCSR_B_Packet
PENDING

MONUMENT RECORD

Corner ID: **VanBu_U17**

Section Corner

Sections 23, 24, 25 & 26- T08N-R02W, 2nd P.M.
Van Buren Township, Monroe County, Indiana

Section 23 T08N-R02W	Section 24 T08N-R02W
Section 26 T08N-R02W	Section 25 T08N-R02W

PHOTO IDENTIFIED: Photo Date: 06/03/2022



Photo Orientation & Description: VanBu_U17 from above and north



Photo Orientation & Description: VanBu_U17 from above

ORIGINAL OR SUBSEQUENT SURVEY EVIDENCE FOUND: *Include, search area or areas, search procedure, etc.*

Date of Field work/Search: 06/03/2022 By: JG & HJ Monument Found: 1/2" Iron Pipe BTs or Reference Objects Found: Found all witnesses from 2004 monument record Project #: Van Buren Preservation Field Book: 54/64 Equipment: The basis of bearings is Grid North System NAD83(2011)/Indiana West NAVD 88, Epoch 2010.0000, geoid12b_conus.db3, US Survey Feet, derived from GPS observations utilizing the Indiana Real-Time Network (INCORS). Coordinate data was collected with a Javad Triumph LS Network Rover. Coordinates are available upon request. Distances to witness ties were collected with a Leica Disto laser distance meter. Bearings to witness ties were collected with the internal magnetic compass of the Javad Triumph LS and were automatically adjusted to grid north and are approximately shown hereon for reference. Priority should be given to provided distances over bearings. Notes: All witness photos on file in the Monroe County Surveyors Office.

OTHER EVIDENCE: *Describe corner location relative to nearby features and how to reach the corner location – note fences, roads, timber cutting lines, mow lines, clearings, plantings, streams, topo changes, etc.*

Monument is located along a grove of trees on the east side of a small clearing that runs northwest/southeast. The MCSO accessed the property from 5275 S Leonard Springs Road. After traversing northeasterly +/- 600' from this entry point, there is an iron gate and then a small but steep creek bed. From the gate, the MCSO walked another +/- 250' north to the monument. It seems possible, also, that this site can be approached from 5000 S Leonard Springs Road.

MONUMENT PRESERVATION: *Describe work done to preserve existing monument.*

Geodetic controls were captured for the monument. The old "Protect Nearby Survey Markers" sign was removed, and a new one was set on a post 4" from monument. A new witness was set west of the monument

THEORY OF LOCATION: *Describe the theory of location for acceptance of this monument. Include monument origin and associated uncertainty.*

The iron pipe was previously witnessed by the Monroe County Surveyor, Steven V. Farkas, on July 19, 2004 using the work conducted by Licensed Surveyor Eric Lee Deckard (LS 29900012). Prior to that, the iron pipe was witnessed by Monroe County Surveyor, Michael W. Friley, on February 28, 1995. Reference on File: Adam Christenberry survey, Location Control Route Survey for the Monroe County Highway Department Rockport Road Over Clear Creek (2021), on file at the Recorder's Office as 2021016767.IN. Historic research has not yet been performed to prove the validity of this monument.

CERTIFICATION:



OFFICE OF THE MONROE COUNTY SURVEYOR • Trohn Enright-Randolph

119 W 7th Street, Bloomington, IN 47404 • 812-349-2570 • surveyoroffice@co.monroe.in.us

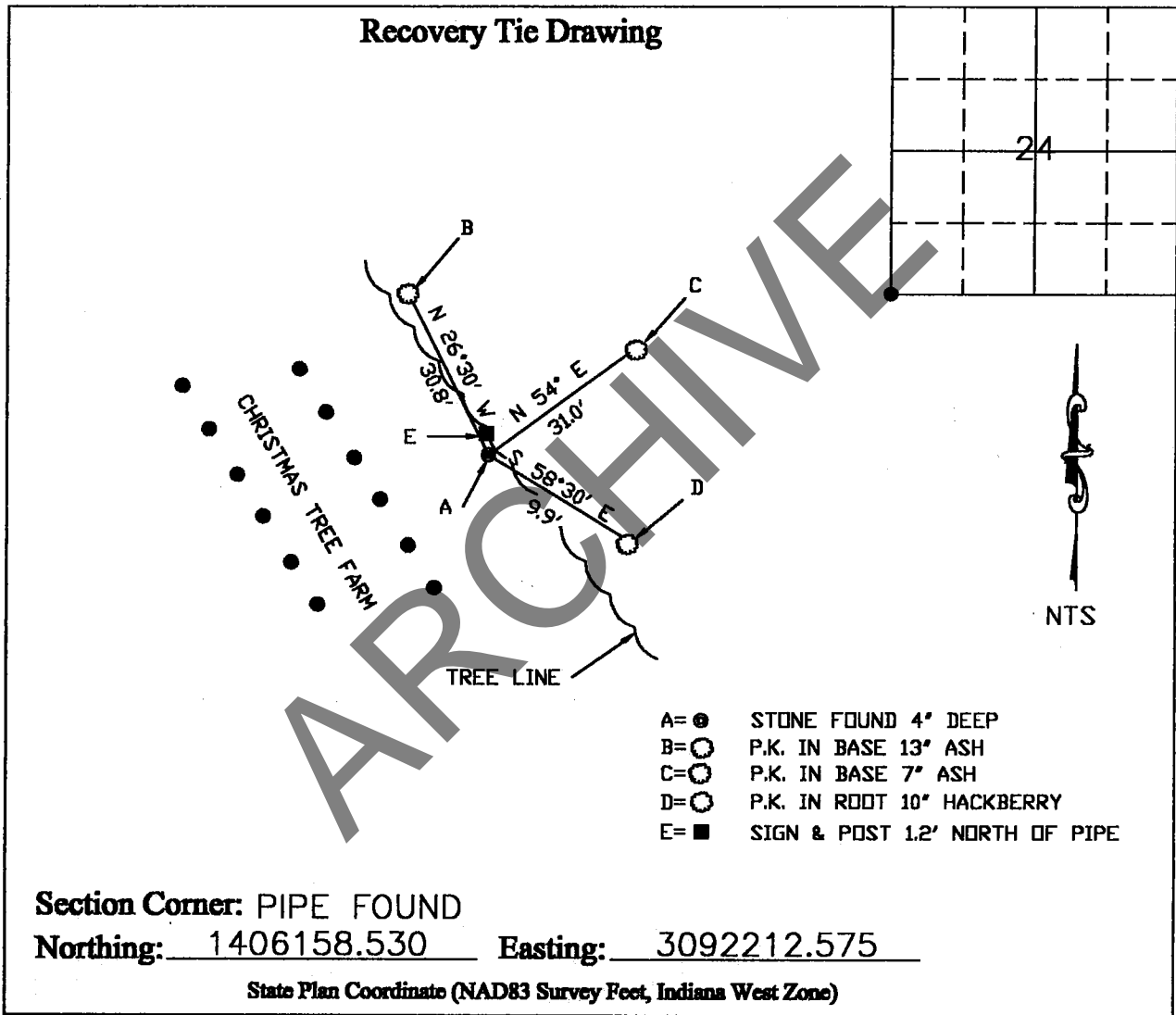
Corner I.D.# VAN BU U-17

MONUMENT RECORD

STATE OF INDIANA-COUNTY OF MONROE

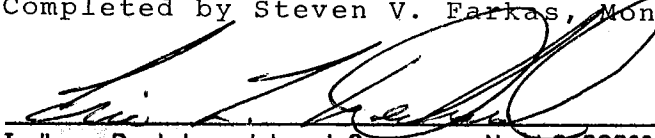
Section: 24, Township: 8 NORTH, Range: 2 WEST,

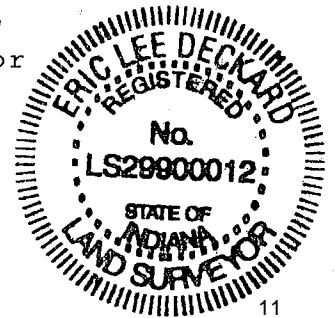
Monument Description & Remarks: 1/2" PIPE FLUSH TO GROUND



I, Eric Lee Deckard, here by certify that this document was prepared under my direction in accordance with the provisions of Section 17-3-64-4 through 17-3-64-8 of the Indiana Code, being Acts of 1965, Chapter 319; this 19th day of JULY, 2004 A.D.

Completed by Steven V. Farkas, Monroe County Surveyor


 Indiana Registered Land Surveyor No. LS 29900012



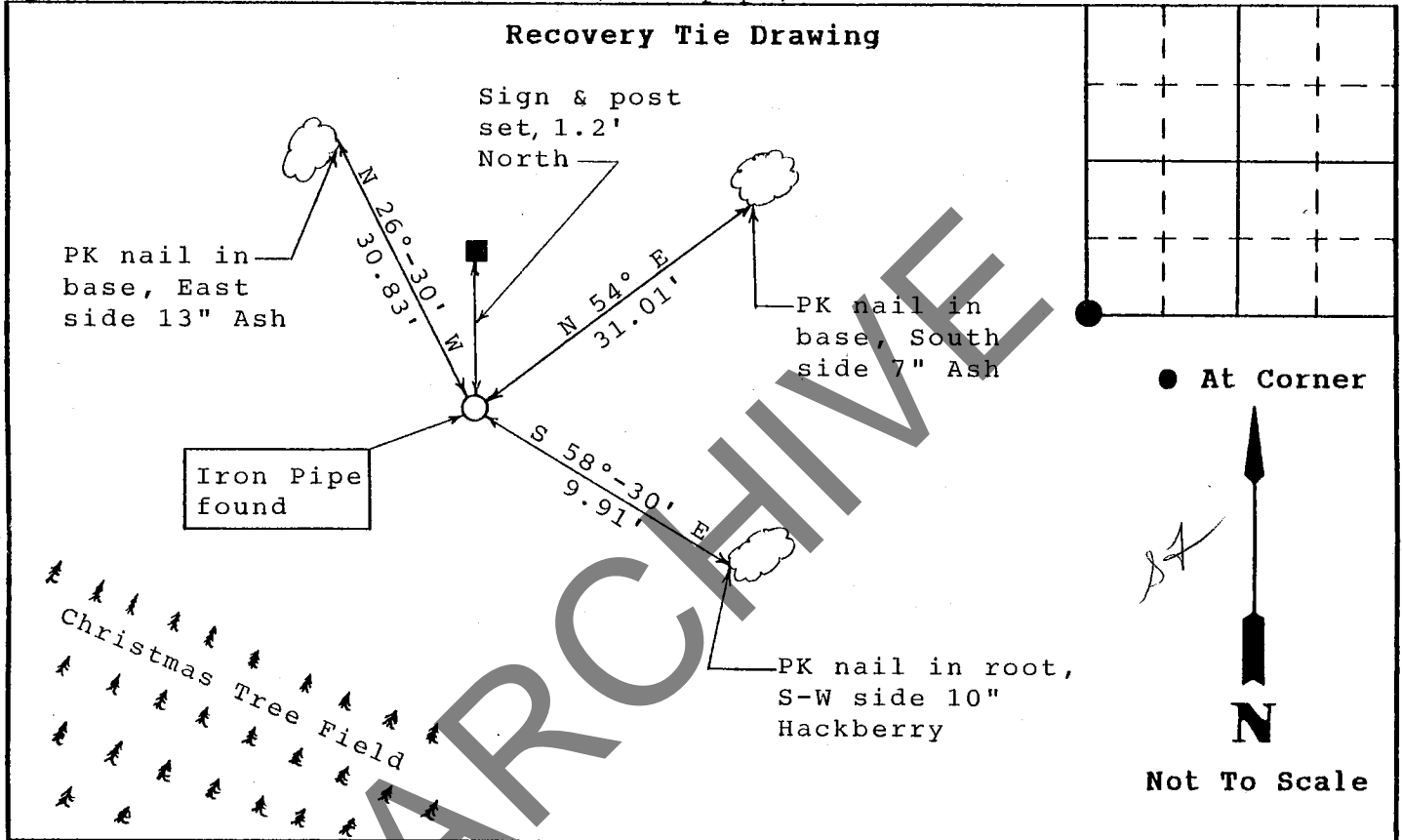
MONUMENT RECORD

Corner I.D. #
U-17¹²

STATE OF INDIANA - COUNTY OF MONROE

Section Twenty-four, 24, Township 8 North, Range 2 West

Monument Description & Remarks: Found 3/4" Iron Pipe at Southwest Corner of Section. Pipe is firmly set and 1" out of ground. Sign and metal fence post set 1.2' North of corner (iron pipe).



State of Indiana
County of Monroe

M.W.F.

I, Michael W. Friley, County Surveyor, hereby certify that this document was prepared under my direction in accordance with the provisions of Section 17-3-64-4 through 17-3-64-8 of the Indiana Code, being Acts of 1965, Chapter 319; and the above data is given under my hand and seal this 28th day of February, 19 95 A.D.

Space Reserved For Recording Officer

Indiana Registered Land Surveyor No. _____ or

Office of Monroe County Surveyor
United States Government Agency

Monroe County Surveyor
Title _____

Field Book:
95-01
Page:
5

MCSR_B_Packet
PENDING

MONUMENT RECORD

Corner ID: **VanBu_U19**

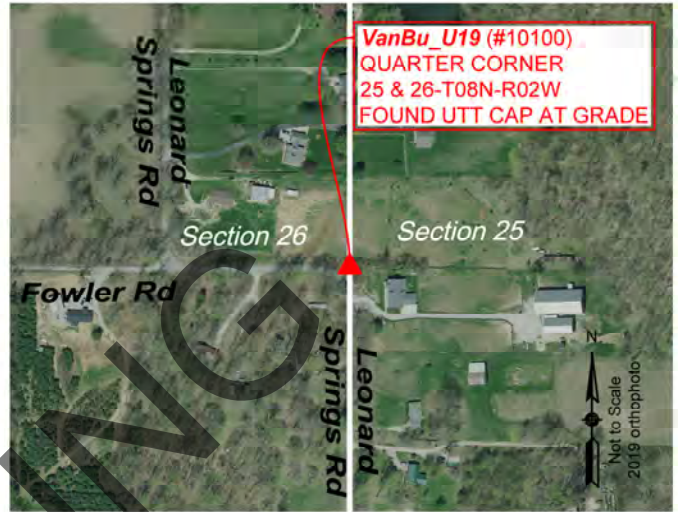
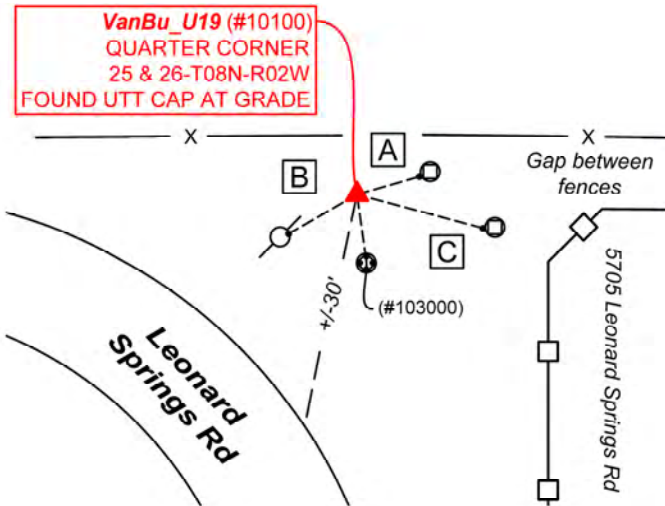
¼ Corner

Sections 25, 26 - T08N-R02W, 2nd P.M.
 Van Buren Township, Monroe County, Indiana

			13	
	Section 26		Section 25	
	T08N-R02W	▲	T08N-R02W	
	Van Buren		Van Buren	

MONUMENT: Describe monument set or found (Include material type, scribing, distance above/below grade, dimensions.)
 5/8" Rebar with yellow plastic cap stamped "UTT S-0089" found with base of cap at grade, approximately 30' east of Leonard Springs Road.

MONUMENT LOCATION SKETCH:



WITNESS MONUMENT TIES

All ties to new Bearing Trees (BTs) are a mag nail set in a 1-1/2" plastic washer stamped "SURVEY MARKER - DO NOT REMOVE" and hack mark at the root crown (less than 12" above ground) perpendicular to the center of the tree, unless otherwise noted. BT diameters are noted as dbh and are measured approximately 4.5' above ground. Bearings are measured from the monument to the center of the BT, distances are measured from the monument to the mag nail.

ID	BEARING	DISTANCE	DESCRIPTION
Witness A	N 74d E	10.0'	Mag nail found 0.5' above grade on the west side of a 3" x 5" 5' tall wooden corner post as per 2006 monument record.
Witness B	S 60d W	12.3'	Mag nail and washer set 1' above grade on the east side of 11" power line pole as per 2006 monument record.
Witness C	S 75d E	20.0'	Mag nail found 3' above grade on the west side of a 5"x8" 5.9' tall rail road tie post as per 2006 monument record.

MONUMENT ACCESSORIES

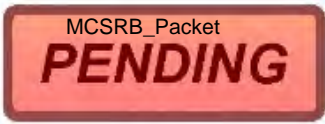
Other survey grade monuments that were located in the vicinity and their relation to the monument. Geodetic coordinates in this table are provided in the format Easting, Northing.

(#103000)	S 7d56'52" E	10.57'	Abandoned utility pole anchor. Points collected at grade through eyelet. 3092213.50, 1403478.69
-----------	--------------	--------	--



OFFICE OF THE MONROE COUNTY SURVEYOR • Trohn Enright-Randolph

119 W 7th Street, Bloomington, IN 47404 • 812-349-2570 • surveyoroffice@co.monroe.in.us



MONUMENT RECORD

Corner ID: **VanBu_U19**

¼ Corner

Sections 25, 26 - T08N-R02W, 2nd P.M.
Van Buren Township, Monroe County, Indiana

		14	
Section 26		Section 25	
T08N-R02W	▲	T08N-R02W	
Van Buren		Van Buren	

PHOTO IDENTIFIED: Photo Date: 5/23/2022



Photo Orientation & Description: VanBu_U19 from above



Photo Orientation & Description: Looking north at VanBu_U19

ORIGINAL OR SUBSEQUENT SURVEY EVIDENCE FOUND: Include, search area or areas, search procedure, etc.

Date of Field work/Search: 5/23/2022 By: HJ & JG Monument Found: Rebar with Utt cap. BTs or Reference Objects Found: Witnesses B, D, E & F were all found from 2006 monument record. Project #: Van Buren Preservation Field Book: 54/62 Equipment: Coordinate data was collected with a Javad Triumph LS Network Rover. The basis of bearings is Grid North NAD83(2011), Indiana West Zone, Epoch 2010.0000, Geoid Model G2012BU7, Datum NAD83_NO_TRANS, US Survey Feet, derived from GPS observations utilizing the Indiana Real-Time Network (INCORS). Distances obtained with GPS have not been adjusted to ground. Coordinates are available upon request. Notes: All witness photos on file in the Monroe County Surveyors Office.

OTHER EVIDENCE: Describe corner location relative to nearby features and how to reach the corner location – note fences, roads, timber cutting lines, mow lines, clearings, plantings, streams, topo changes, etc.

VanBu_U19 is located approximately 30' off of the east side of Leonard Springs Road, within a thicket where the parcels for 5479, 5667 and 5705 Leonard Springs Road could be found adjacent. The best path to the rebar is to approach it westerly from 5705 Leonard Spring Rd.'s driveway and along their fence line. Both the power line pole, the "Protect Nearby Survey Markers" sign and the railroad tie post can be spotted from road.

MONUMENT PRESERVATION: Describe work done to preserve existing monument.

"Protect Nearby Survey Markers" sign was replaced with a new one fastened with conduits. The sign post was painted. All witnesses were tied off with pink tape. A new mag nail with washer was set in power line pole. Clearing of overgrown vegetation aided in monument's visibility and access from the road. Geodetic Coordinates were collected for VanBu_U19 along with the new witness (#103000).

THEORY OF LOCATION: Describe the theory of location for acceptance of this monument. Include monument origin and associated uncertainty.

The rebar was previously witnessed by the Monroe County Surveyor, Kevin Enright, on June 29, 2006 and accepted by the Monroe County Surveyor Review Board on October 24, 2006. The 2006 Monument Record accepted the rebar per a preliminary plat by Bernard A. Guerrettaz on file at the Surveyor's Office as RSID004811. References on File: Eric L. Deckard plat, Fowler Revocable Trust Minor Subdivision (2018), on file at the Recorder's Office as 2018014154.IN and Adam Christenberry survey, Location Route Survey for the Monroe County Highway Department Rockport Road Over Clear Creek (2021), on file at the Recorder's Office as 2021016767.IN. Historic research has not yet been performed to prove the validity of this monument.

CERTIFICATION:



OFFICE OF THE MONROE COUNTY SURVEYOR • Trohn Enright-Randolph

119 W 7th Street, Bloomington, IN 47404 • 812-349-2570 • surveyoroffice@co.monroe.in.us

MONUMENT RECORD
State of Indiana - County of Monroe

Section: 26

Township: 8 North

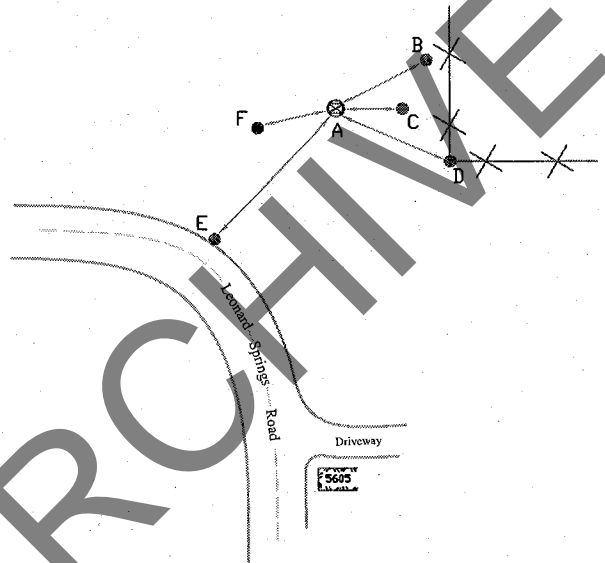
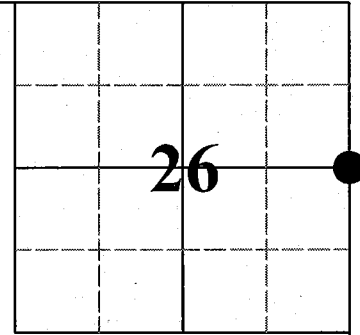
Range: 2 West

Corner ID: VanBu U-19

Monument Description & Remarks: 5/8" Rebar with, "Utt", cap found. Set metal post on north side with Survey Sign 4.5ft above ground.

References On File: Bernard A. Guerrettaz survey, Fowler Road Subdivision (2006), survey on file in Surveyor Office.

RECOVERY TIE DRAWING
Field Book 38 Page No. 24

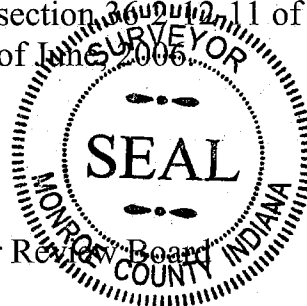


- A - 5/8" Rebar with cap.
- B - N 86° E 10.01' to MAG nail in 3"x5"x5' Wood Post.
- C - S 86° E 5.66' to 1/2" Iron Pipe.
- D - S 45° E 20.38' to MAG nail in 5"x8" R.R. Tie Post.
- E - S 65° W 30.40' to Edge of Road.
- F - S 62° W 12.32' to MAG nail in 11" PWP.



Not To Scale
Compass Bearing Magnetic North

I, Kevin P. Enright, Monroe County Surveyor, hereby certify that this document was prepared under my direction in accordance with the provisions of section 36-01-11 of the Indiana Code; and the above data is given under my hand and seal this 29th day of June 2006.



Administered by the Monroe County Surveyor Review Board

Date: 10/24/06

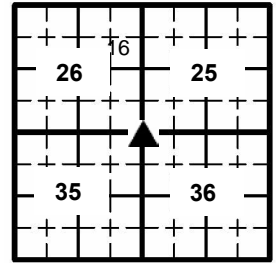
MCSR_B_Packet
PENDING

MONUMENT RECORD

Corner ID: **VanBu_U21**

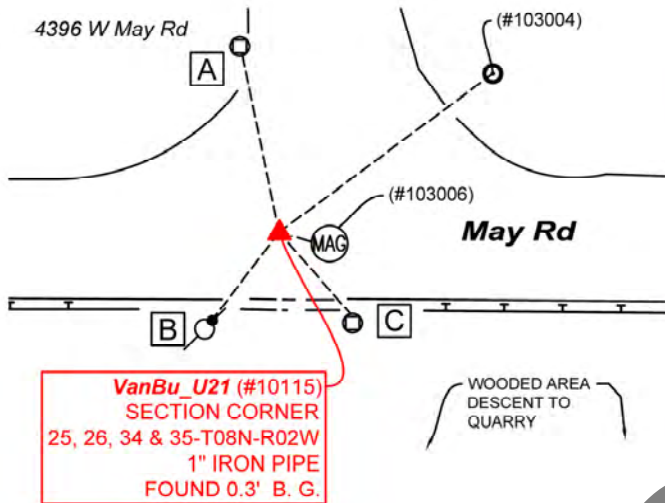
Section Corner

Sections 25, 26, 35 & 36- T08N-R02W, 2nd P.M.
 Van Buren Township, Monroe County, Indiana



MONUMENT: Describe monument set or found (Include material type, scribing, distance above/below grade, dimensions.)
 Found 1" mangled Iron Pipe 0.3' below grade in centerline of May Road.

MONUMENT LOCATION SKETCH:



WITNESS MONUMENT TIES

All ties to new Bearing Trees (BTs) are a mag nail set in a 1-1/2" plastic washer stamped "SURVEY MARKER - DO NOT REMOVE" and hack mark at the root crown (less than 12" above ground) perpendicular to the center of the tree, unless otherwise noted. BT diameters are noted as dbh and are measured approximately 4.5' above ground. Bearings are measured from the monument to the center of the BT, distances are measured from the monument to the mag nail.

ID	BEARING	DISTANCE	DESCRIPTION
Witness A	N 12d W	28.2'	Stop sign post measured to center of south side at 5' above grade.
Witness B	S 37d W	17.7'	"Protect Nearby Survey Markers" sign set 3.7' above grade on northeast side of 11" power line pole.
Witness C	S 41d E	17.0'	Measured to center face of 2 Way Sign 5.3' above grade where Leonard Springs Road T's into May Road.

MONUMENT ACCESSORIES

Other survey grade monuments that were located in the vicinity and their relation to the monument. Geodetic coordinates in this table are provided in the format Easting, Northing.

(#103004)	N 53d16'32" E	41.78'	Found 5/8" rebar with blue Deckard cap 0.7' above grade reading, "DECKARD FIRM #0129." 3092252.37, 1400842.32
(#103006)	S 73d19'46" E	4.74'	Found mag nail with washer flush to road reading, "TRAVIS A NORMAN PLS 20500020." 3092223.80, 1400815.87



OFFICE OF THE MONROE COUNTY SURVEYOR • Trohn Enright-Randolph

119 W 7th Street, Bloomington, IN 47404 • 812-349-2570 • surveyoroffice@co.monroe.in.us

MONUMENT RECORD

Corner ID: **VanBu_U21**

Section Corner

Sections 25, 26, 35 & 36- T08N-R02W, 2nd P.M.
 Van Buren Township, Monroe County, Indiana

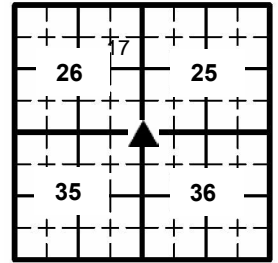


PHOTO IDENTIFIED: Photo Date: 06/10 & 06/27/2022



Photo Orientation & Description: VanBu_U21 from above



Photo Orientation & Description: VanBu_U21 from above

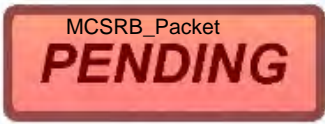


Photo Orientation & Description: Looking west at VanBu_U21



Photo Orientation & Description: Looking north at VanBu_U21

ORIGINAL OR SUBSEQUENT SURVEY EVIDENCE FOUND: Include, search area or areas, search procedure, etc.
 Date of Field work/Search: 06/10/2022 & 06/27/2022 By: HJ & JG Monument Found: Iron Pipe BTs or Reference Objects Found: Power line pole was found but no nail with cap from previous monument record Project #: Van Buren Preservation Field Book: 54/65
 Equipment: The basis of bearings is Grid North System NAD83(2011)/Indiana West NAVD 88, Epoch 2010.0000, geoid12b_conus.db3, US Survey Feet, derived from GPS observations utilizing the Indiana Real-Time Network (INCORS).
 Coordinate data was collected with a Javad Triumph LS Network Rover. Coordinates are available upon request. Distances to witness ties were collected with a Leica Disto laser distance meter. Bearings to witness ties were collected with the internal magnetic compass of the Javad Triumph LS and were automatically adjusted to grid north and are approximately shown hereon for reference. Priority should be given to provided distances over bearings. Notes: All witness photos on file in the Monroe County Surveyors Office.

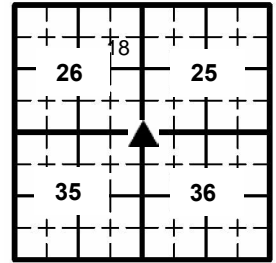


MONUMENT RECORD

02/21/2023
Corner ID: **VanBu_U21**

Section Corner

Sections 25, 26, 35 & 36- T08N-R02W, 2nd P.M.
Van Buren Township, Monroe County, Indiana



OTHER EVIDENCE: Describe corner location relative to nearby features and how to reach the corner location – note fences, roads, timber cutting lines, mow lines, clearings, plantings, streams, topo changes, etc.

Iron Pipe was found in the centerline of May Road where South Leonard Springs Road T's into it. It is 4.7' northwest of a mag nail and washer set by Travis Norman. It is directly north of Bedrock, Inc quarry.

MONUMENT PRESERVATION: Describe work done to preserve existing monument.

Geodetic controls were collected for the monument and two of its witnesses. "Protect Nearby Survey Markers" sign was set close to it's location.

THEORY OF LOCATION: Describe the theory of location for acceptance of this monument. Include monument origin and associated uncertainty.

This pipe was witnessed by the Monroe County Surveyor's Office at undisclosed date. It is believed that the pipe was set by the survey party of T. Daugherty & H. Sudbury for a survey conducted by Raymond Graham, Monroe County Surveyor Raymond Graham Section Corner Perpetuation Survey (1974), on file at the Surveyor's Office as RSID002227. It's placement was check-chained north & south but not east & west. Other References on File: Nelson L. Prall survey, Victor Buff Stone Co (1985), on file at the Surveyor's Office as RSID001265 and Todd M. Borgman survey, Boundary Survey 4495 W May Rd (2021), on file at the Recorder's Office as 2021012947.IN. Historic research has not yet been performed to prove the validity of this monument.

CERTIFICATION:

PENDING



OFFICE OF THE MONROE COUNTY SURVEYOR • Trohn Enright-Randolph

119 W 7th Street, Bloomington, IN 47404 • 812-349-2570 • surveyorsoffice@co.monroe.in.us

MONUMENT RECORD

CORNER I.D.
19

U - 21

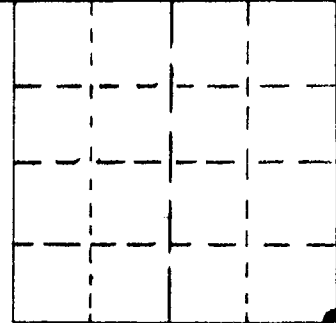
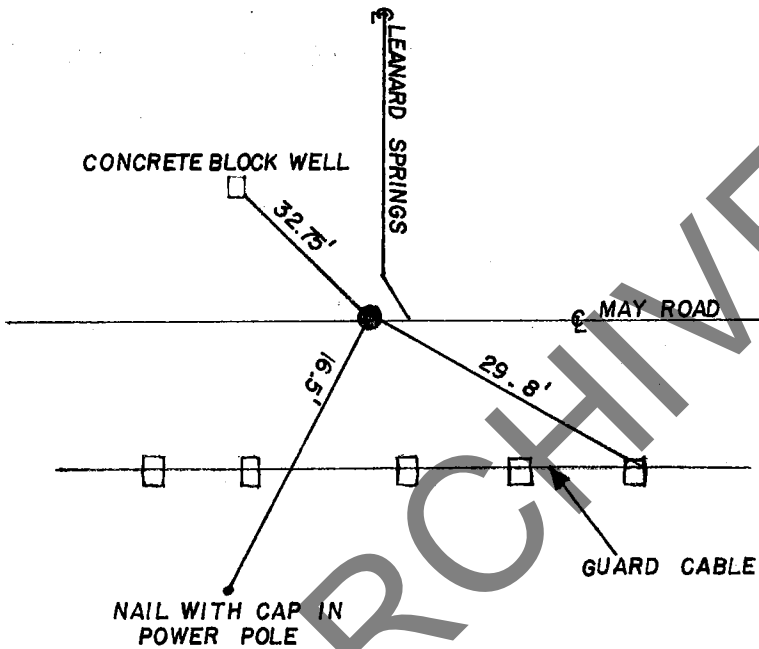
STATE OF INDIANA - COUNTY OF MONROE

SECTION 26, TOWNSHIP 8 NORTH, RANGE 2 WEST

MONUMENT DESCRIPTION & REMARKS

PIPE PLACED FLUSH IN CENTERLINE OF ROAD. IT WAS NOT
CHECKED NORTH AND SOUTH, BUT WAS CHECK-CHAINED EAST AND
WEST.

RECOVERY TIE DRAWING



(●) AT CORNER



NOT TO SCALE

STATE OF INDIANA

COUNTY OF MONROE

I, _____ HEREBY CERTIFY THAT THIS DOCUMENT WAS PREPARED UNDER MY DIRECTION IN ACCORDANCE WITH THE PROVISIONS OF SECTION 17-3-64-4 - 17-3-64-8 OF THE INDIANA CODE, BEING ACTS OF 1965, CHAPTER 319; AND THE ABOVE DATA IS GIVEN UNDER MY HAND AND SEAL THIS _____ DAY OF _____, 19____ A.D.

SPACE RESERVED FOR RECORDING OFFICER.

INDIANA REGISTERED LAND SURVEYOR NO. _____

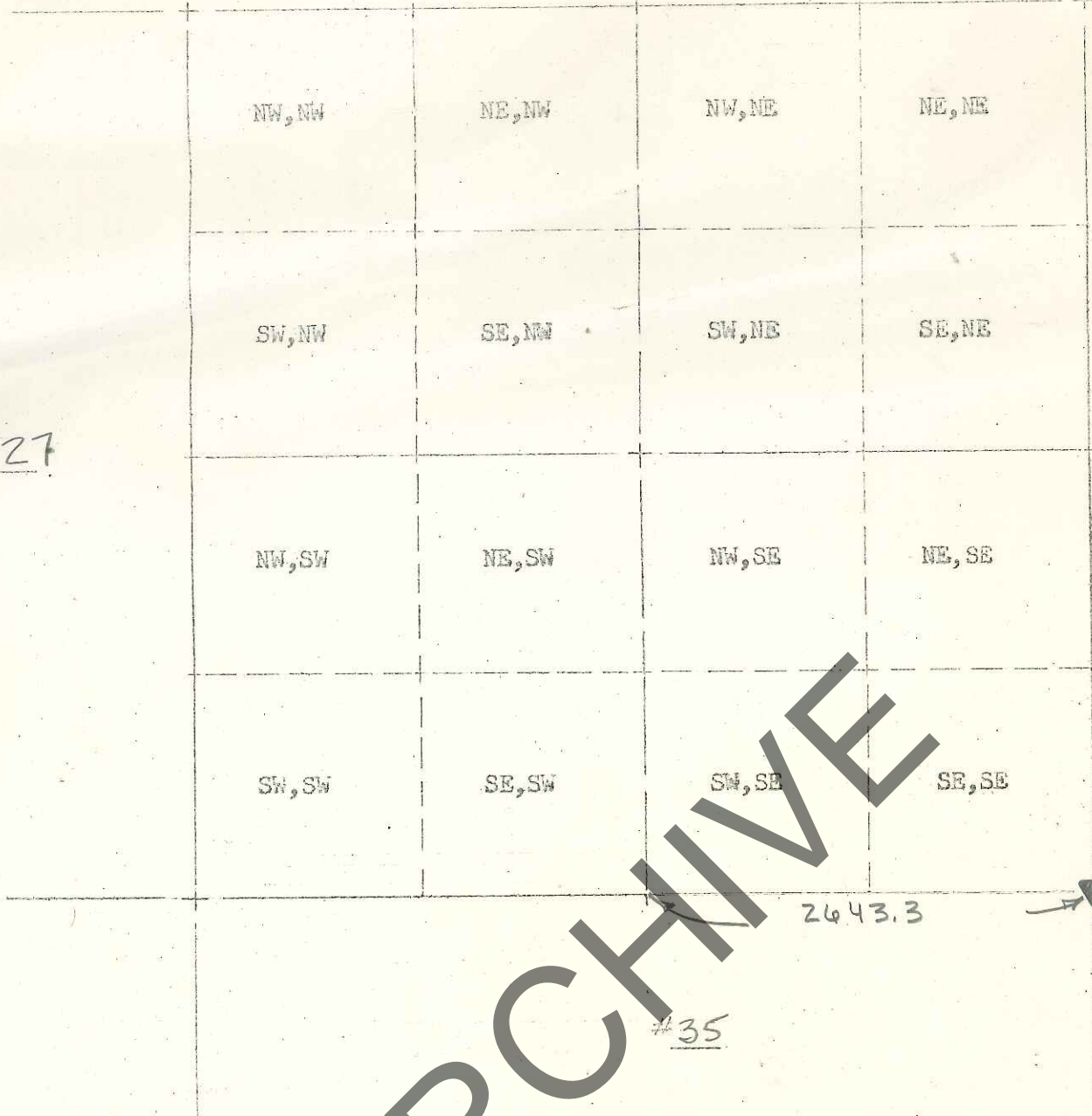
OR _____

UNITED STATES GOVERNMENT AGENCY

TOWNSHIP: VAN BUREN

CORNER I.D.

TITLE



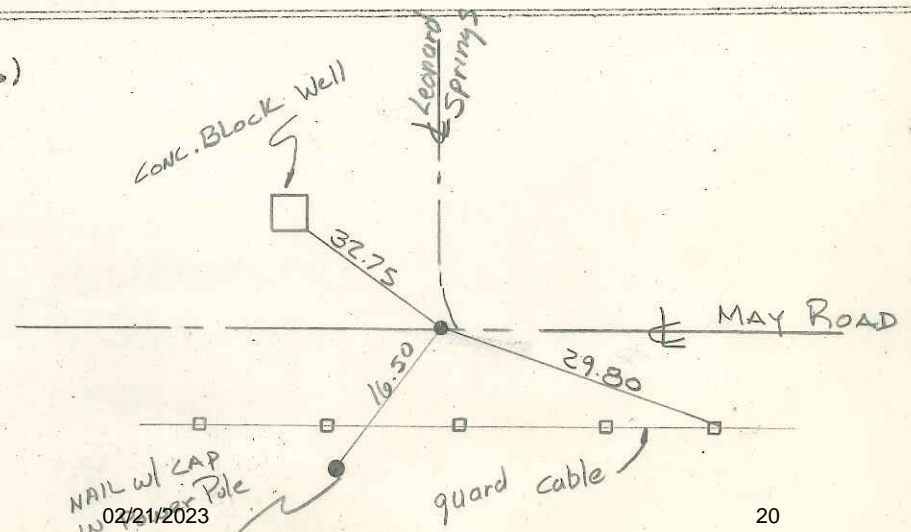
ARCHIVE

AZIMUTH and BEARING DATUM DESCRIPTION

DATE 10-24-74 SURVEY PARTY T. Daugherty - H. Sudbury

COMMENTS Pipe placed flush in \perp Road. - It was not checked North $\&$ South, but was Check-chained East $\&$ West

REFERENCE SKETCH (use back if ness.)



MCSR_B_Packet
PENDING

MONUMENT RECORD

Corner ID: **VanBu_U23**

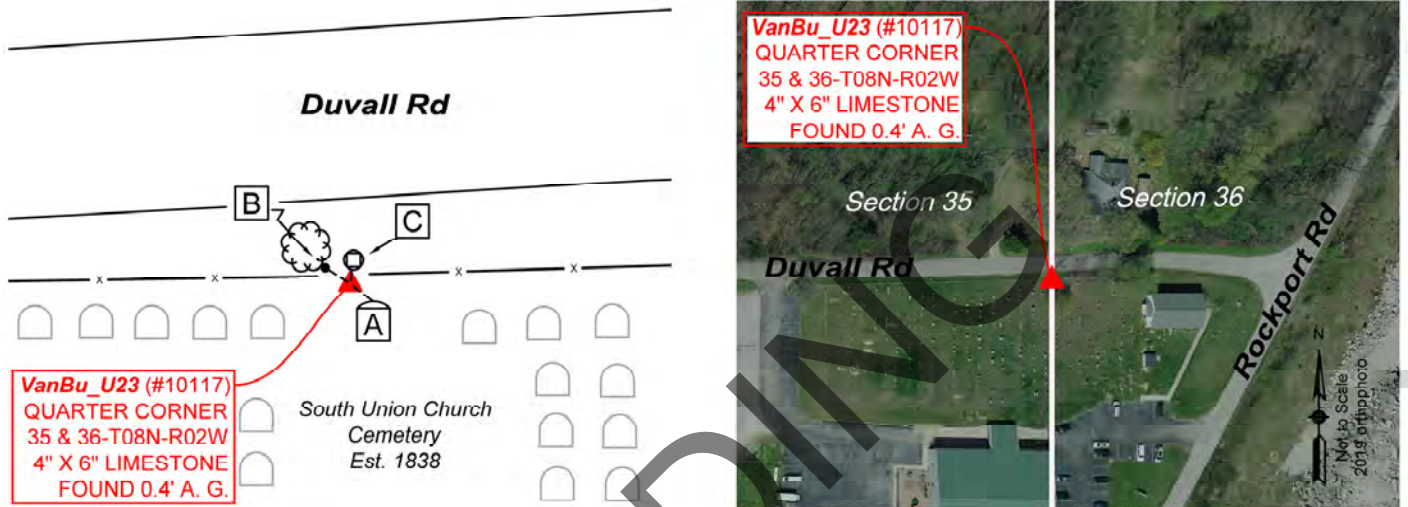
Quarter Corner

Sections 35 & 36 - T08N-R02W, 2nd P.M.
 Van Buren Township, Monroe County, Indiana

		21	
Section 35		Section 36	
T08N-R02W	▲	T08N-R02W	
Van Buren		Van Buren	

MONUMENT: Describe monument set or found (Include material type, scribing, distance above/below grade, dimensions.)
 4" x 6" Limestone with cut "4" on south side found 4" above grade +/- 2' south of cyclone fence on north perimeter of South Union Church Cemetery.

MONUMENT LOCATION SKETCH:



WITNESS MONUMENT TIES			
<p>All ties to new Bearing Trees (BTs) are a mag nail set in a 1-1/2" plastic washer stamped "SURVEY MARKER - DO NOT REMOVE" and hack mark at the root crown (less than 12" above ground) perpendicular to the center of the tree, unless otherwise noted. BT diameters are noted as dbh and are measured approximately 4.5' above ground. Bearings are measured from the monument to the center of the BT, distances are measured from the monument to the mag nail.</p>			
ID	BEARING	DISTANCE	DESCRIPTION
Witness A	S 53d E	3.0'	7" X 1.5" headstone found, measured to top center 17" above grade. The east side of the headstone is dedicated to "OSCAR" and depicts a finger pointing upward.
Witness B	N 57d W	3.0'	Mag nail set 0.5' above grade on the southeast side of a 15" black walnut tree.
Witness C	N 6d E	1.5'	Set "Protect Nearby Survey Markers" sign on T post ' above grade facing north.



MCSR_B_Packet
PENDING

MONUMENT RECORD

Corner ID: **VanBu_U23**

Quarter Corner

Sections 35 & 36 - T08N-R02W, 2nd P.M.
 Van Buren Township, Monroe County, Indiana

		22	
Section 35		Section 36	
T08N-R02W	▲	T08N-R02W	
Van Buren		Van Buren	

PHOTO IDENTIFIED: Photo Date: 06/27/2022



Photo Orientation & Description: Looking north at Van_Bu_U23



Photo Orientation & Description: Looking down at VanBu_U23



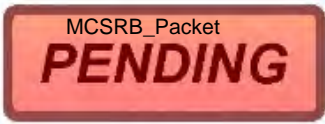
Photo Orientation & Description: Looking east at Van_Bu_U23



Photo Orientation & Description: Looking south at VanBu_U23

ORIGINAL OR SUBSEQUENT SURVEY EVIDENCE FOUND: *Include, search area or areas, search procedure, etc.*
 Date of Field work/Search: 06/27/2022 By: JG & HJ Monument Found: Limestone BTs or Reference Objects Found: n/a Project #: Van Buren Preservation Field Book: 54/67 Equipment: The basis of bearings is Grid North System NAD83(2011)/Indiana West NAVD 88, Epoch 2010.0000, geoid12b_conus.db3, US Survey Feet, derived from GPS observations utilizing the Indiana Real-Time Network (INCORS). Coordinate data was collected with a Javad Triumph LS Network Rover. Coordinates are available upon request. Distances to witness ties were collected with a Leica Disto laser distance meter. Bearings to witness ties were collected with the internal magnetic compass of the Javad Triumph LS and were automatically adjusted to grid north and are approximately shown hereon for reference. Priority should be given to provided distances over bearings. Notes: All witness photos on file in the Monroe County Surveyors Office.





MONUMENT RECORD

02/21/2023
Corner ID: **VanBu_U23**

Quarter Corner

Sections 35 & 36 - T08N-R02W, 2nd P.M.
Van Buren Township, Monroe County, Indiana

		23	
Section 35		Section 36	
T08N-R02W	▲	T08N-R02W	
Van Buren		Van Buren	

OTHER EVIDENCE: Describe corner location relative to nearby features and how to reach the corner location – note fences, roads, timber cutting lines, mow lines, clearings, plantings, streams, topo changes, etc.

Stone is located within the fence that surrounds the South Union Church Cemetery +/- 95' west of the church and +/- 225' west of Rockport Rd in a shady area. It can be seen from Duvall Rd but must be accessed from the parking lot south of the cemetery.

MONUMENT PRESERVATION: Describe work done to preserve existing monument.

Geodetic controls were captured for the monument. Acidity of stone was tested. "Protect Nearby Survey Markers" sign was set respectably on the north side of the fence facing north. Witnesses were established.

THEORY OF LOCATION: Describe the theory of location for acceptance of this monument. Include monument origin and associated uncertainty.

It is believed the stone originates from a survey performed by James H. Spencer performed February 13th and 14th, 1865 and archived in Land Survey Book 2, Page 118 on file at the Surveyor's Office as RSID004922. A magnetic signal was found on the south side of Ballard Rd. 12.18' north of the monument, which could be the road nail identified as a witness in a survey by Dustin K. Ballard, I-69 Section 4, Segment 8 East Zone Location Control Route Survey (2011), on file at the Recorder's Office as 2011008296.IN. Another Reference on File: Survey by Eric L. Deckard, Alex Deckard Type "E" Administrative Subdivision Final Plat (2021), on file at the Recorder's Office as 2021009651.IN. MCSO used the distances and bearings between VanBu_U25 and VanBu_U23, provided in Mr. Deckard's survey, to verify the stone certified here was the same one being held on the Alex Deckard Plat. Historic research has not yet been performed to prove the validity of this monument.

CERTIFICATION:

PENDING



MCSR_B_Packet
PENDING

MONUMENT RECORD

Corner ID: **VanBu_U25**

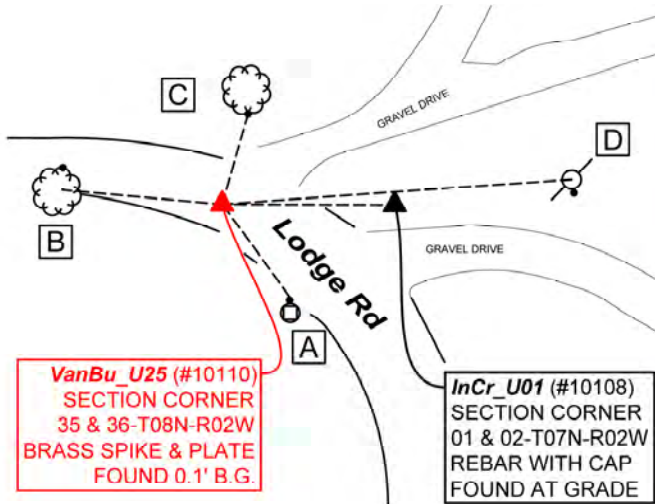
Section Corner

Sections 35 & 36 - T08N-R02W, 2nd P.M.
Van Buren Township, Monroe County, Indiana

Section 35 T08N-R02W Van Buren	Section 36 T08N-R02W Van Buren
Section 02 T07N-R02W Indian Creek	Section 01 T07N-R02W Indian Creek

MONUMENT: Describe monument set or found (Include material type, scribing, distance above/below grade, dimensions.)
Found Brass Spike and Plate 0.1' below grade 1' south of centerline of South Lodge Road.

MONUMENT LOCATION SKETCH:



WITNESS MONUMENT TIES			
All ties to new Bearing Trees (BTs) are a mag nail set in a 1-1/2" plastic washer stamped "SURVEY MARKER - DO NOT REMOVE" and hack mark at the root crown (less than 12" above ground) perpendicular to the center of the tree, unless otherwise noted. BT diameters are noted as dbh and are measured approximately 4.5' above ground. Bearings are measured from the monument to the center of the BT, distances are measured from the monument to the mag nail.			
ID	BEARING	DISTANCE	DESCRIPTION
Witness A	S 36d E	30.5'	Mag nail and washer set 0.4' above grade on the north side of a 4" x 4" mailbox post for 7013 Lodge Rd measured to mag nail and washer.
Witness B	N 85d W	42.5'	Found mag nail and metal wash 0.5' above grade on north side of 36" bifurcated Poplar tree as per 2004 monument record
Witness C	N 16d E	24.7'	Found "Protect Nearby Survey Markers" sign on south side of a 14" Sugar Maple tree 5' above grade as per 2004 monument record. Measured to face of sign.
Witness D	N 86d E	92.6'	Found mag nail 0.9' above grade on the south side of a 13" power line pole as per 2004 monument record.
MONUMENT ACCESSORIES			
Other survey grade monuments that were located in the vicinity and their relation to the monument.			
(#10108)	S 89d48'12" E	45.63'	Found 5/8" rebar with yellow cap at grade. Cap reads, "BLEDSOE TAPP PC 50920004."





MONUMENT RECORD

Corner ID: **VanBu_U25**

Section Corner

Sections 35 & 36 - T08N-R02W, 2nd P.M.
Van Buren Township, Monroe County, Indiana

Section 35 T08N-R02W Van Buren	Section 36 T08N-R02W Van Buren
Section 02 T07N-R02W Indian Creek	Section 01 T07N-R02W Indian Creek

PHOTO IDENTIFIED: Photo Date: 06/27/2022 & 06/16/2022



Photo Orientation & Description: VanBu_U25 from above



Photo Orientation & Description: Looking northwesterly at VanBu_U25

ORIGINAL OR SUBSEQUENT SURVEY EVIDENCE FOUND: Include, search area or areas, search procedure, etc.
 Date of Field work/Search: 06/16 & 06/27 2022 By: HJ & JG Monument Found: Brass Spike and Brass Plate BTs or Reference Objects
 Found: All witnesses were found from 2004 monument record. Project #: Van Buren Preservation Field Book: 54/66U Equipment:
 The basis of bearings is Grid North System NAD83(2011)/Indiana West NAVD 88, Epoch 2010.0000, geoid12b_conus.db3, US
 Survey Feet, derived from GPS observations utilizing the Indiana Real-Time Network (INCORS). Coordinate data was collected with
 a Javad Triumph LS Network Rover. Coordinates are available upon request. Distances to witness ties were collected with a Leica
 Disto laser distance meter. Bearings to witness ties were collected with the internal magnetic compass of the Javad Triumph LS and
 were automatically adjusted to grid north and are approximately shown hereon for reference. Priority should be given to provided
 distances over bearings. Notes: All witness photos on file in the Monroe County Surveyors Office.

OTHER EVIDENCE: Describe corner location relative to nearby features and how to reach the corner location – note fences, roads, timber cutting
 lines, mow lines, clearings, plantings, streams, topo changes, etc.
 Proceeding from the east, from Rockport Road, Lodge Road curves south. VanBu_U25 is located on this curve. It's location was
 found excavated and was left this way.

MONUMENT PRESERVATION: Describe work done to preserve existing monument.
 Geodetic controls were collected for the monument and it's offset monument InCr_U01. A new witness was set. The magnetic
 properties of the brass were tested. Limbs around the Sugar Maple tree hosting the "Protect Nearby Survey Markers" sign were
 trimmed for visibility.

THEORY OF LOCATION: Describe the theory of location for acceptance of this monument. Include monument origin and associated uncertainty.
 The brass spike and plate were previously witnessed by the Monroe County Surveyor, Steven V. Farkas, on July 19, 2004, using
 work conducted by Licensed Surveyor Eric Lee Deckard (LS 29900012). The brass spike and plate were set by Monroe County
 Surveyor, Kevin P. Enright on October 5, 1999. Mr. Enright was accompanied by Mike Good of Graham Engineering. This
 monument was set because the prior monument, 0.5' x 0.5' limestone, was obliterated with a culvert installation along Lodge Road.
 Prior to that, the limestone was witnessed by Monroe County Surveyor, Edmund O. Farkas, on June 9, 1983. References on file:
 Bernard A. Guerretaz II plat, Charles Langley Minor Subdivision (2004), on file at the Recorder's Office as 2004017925.IN. Dustin K.
 Ballard survey, I-69 Section 4, Segment 8 East Zone Location Control Route Survey. Also includes Section 35 in Van Buren and
 Sections 1 & 2 in Indian Creek (2011), on file at the Recorder's Office as 2011008296.IN. Eric L. Deckard plat, Jon Elgar Sliding
 Scale Subdivision (2020), on file at the Recorder's Office as 2020021880.IN. Historic research has not yet been performed to prove
 the validity of this monument.



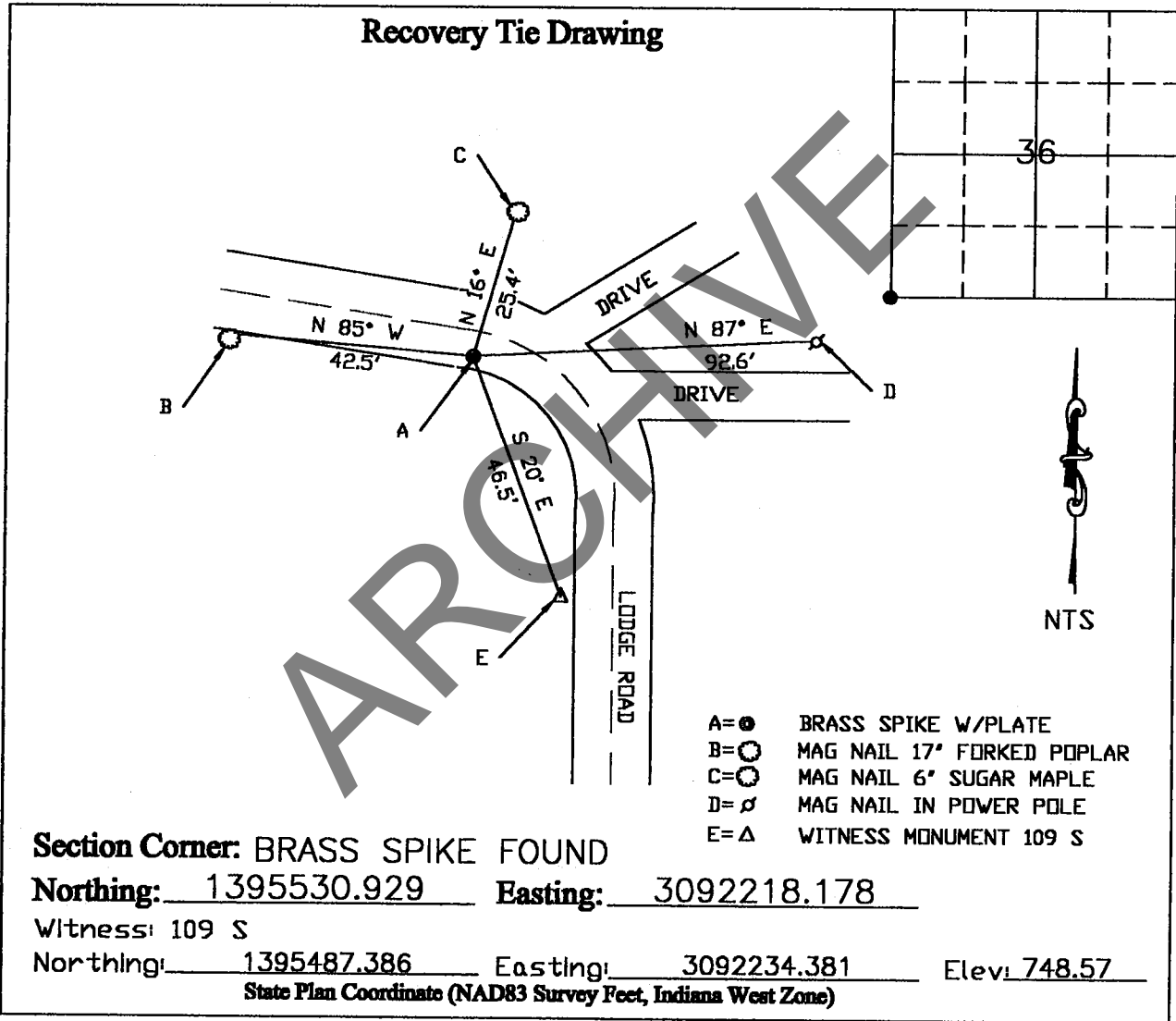
Corner I.D.# VAN BU U-25

MONUMENT RECORD

STATE OF INDIANA-COUNTY OF MONROE

Section: 36, Township: 8 NORTH, Range: 2 WEST

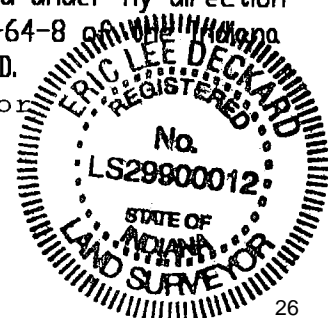
Monument Description & Remarks: BRASS SPIKE WITH PLATE FOUND



I, Eric Lee Deckard, here by certify that this document was prepared under my direction in accordance with the provisions of Section 17-3-64-4 through 17-3-64-8 of the Indiana Code, being Acts of 1965, Chapter 319; this 19th day of JULY, 2004 A.D.

Completed by Steven V. Farkas, Monroe County Surveyor

[Signature]
Indiana Registered Land Surveyor No. LS 29900012



MONUMENT RECORD State of Indiana - County of Monroe

Section: 36

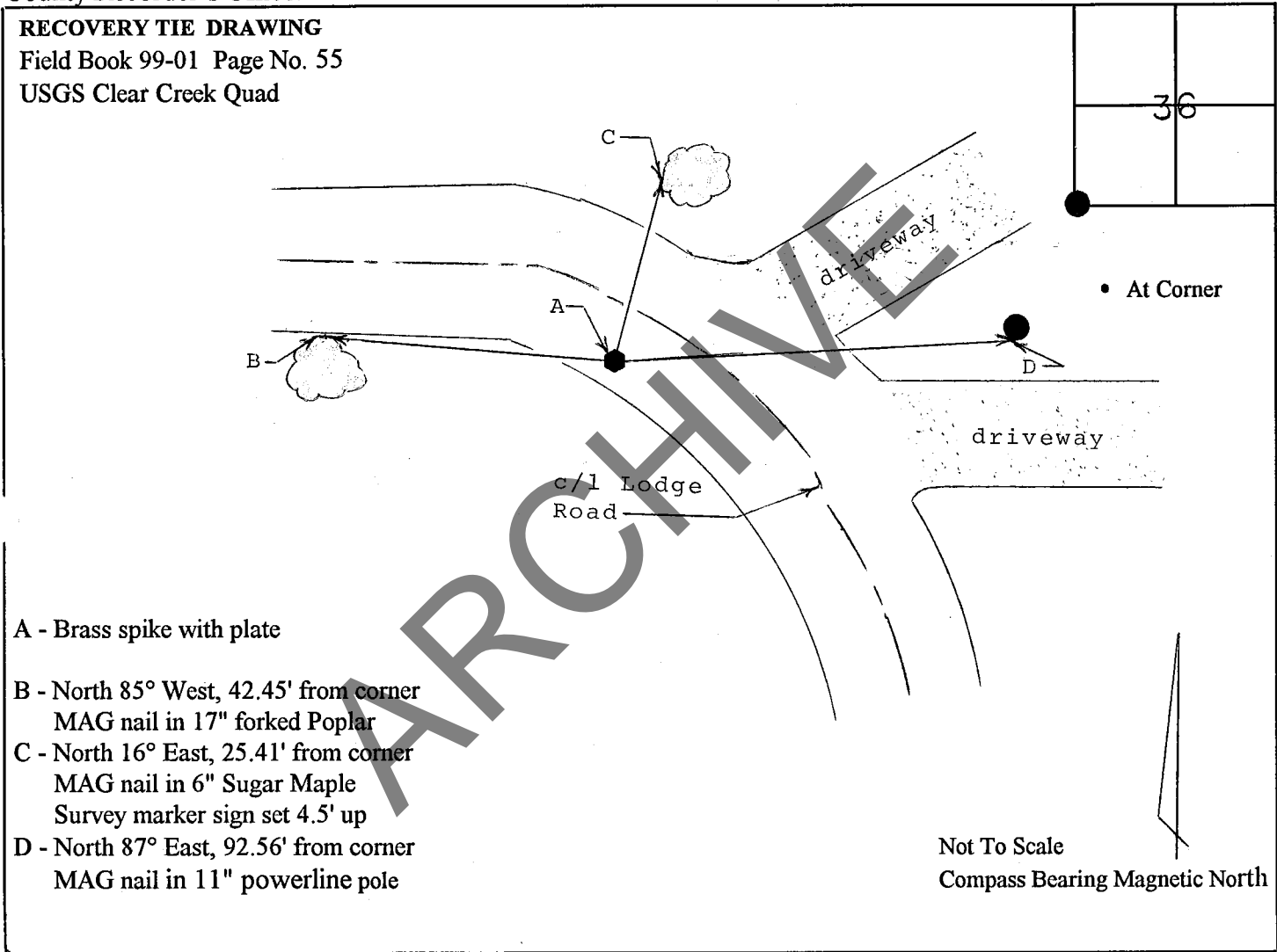
Township: 8 North

Range: 2 West

Corner ID: Van Bu U-25

Monument Description & Remarks: Set Brass Spike and Plate at SW corner of section (County Surveyor accompanied by Mike Good of Graham Engineering). Witness stone from original tie sheet (attached) obliterated with new culvert installation.

References On File: Survey of O'Donnell Subdivision Final Plat by Graham Engineering. To be recorded in the County Recorder's Office.



I, Kevin P. Enright, Monroe County Surveyor, hereby certify that this document was prepared under my direction in accordance with the provisions of Section 36-2-10-1 of the Indiana Code; and the above data is given under my hand and seal this 5th day of October, 1999.



Administered by the Monroe County Surveyor Review Board

Date: November 18, 1999

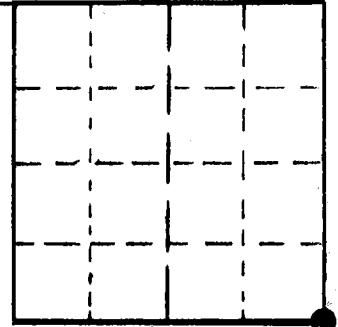
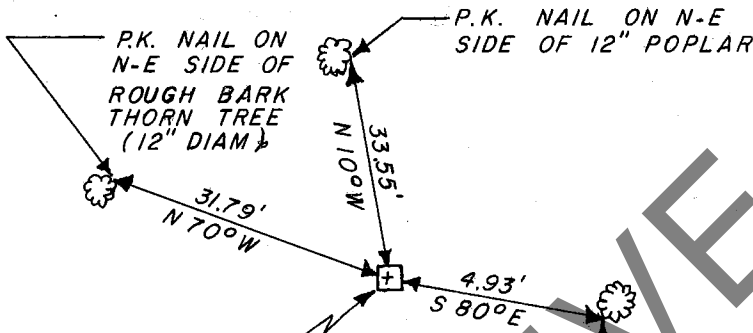
STATE OF INDIANA - COUNTY OF MONROE

SECTION 35, TOWNSHIP 8 NORTH, RANGE 2 WEST

MONUMENT DESCRIPTION & REMARKS

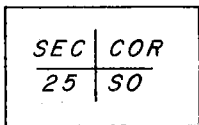
FOUND LIMESTONE STONE SOLID IN GROUND, STONE IS 0.50' X 0.50' X 0.40' HIGH. STONE IS 25 FEET ^{NORTH} SOUTH OF TRUE CORNER, AND HAS AN " X " ON TOP.

RECOVERY TIE DRAWING



(●) AT CORNER

CARVING ON TOP OF STONE (WHEN FACING SOUTH)



SOUTH

P.K. NAIL ON S-W SIDE OF 11" BOX ELDER

LODGE ROAD (GRAVEL)



NOT TO SCALE

STATE OF INDIANA
COUNTY OF MONROE

I, EDMUND O. FARKAS
DOCUMENT WAS PREPARED WITH THE PROVISIONS OF THE INDIANA CODE, BEING THE ABOVE DATA IS GIVEN THIS 9 TH. DAY OF _____

Set corner (brass spike & plate)
10-5-99. witness stone obliterated with culvert installation.

Field Book 99-01
pg. 55 (submitted to SRB) 10-99

SPACE RESERVED FOR RECORDING OFFICER.

5
PAGE
3 OF
AND

INDIANA REGISTERED LAND SURVEYOR
OR _____

TOWNSHIP:
VAN BUREN

UNITED STATES GOVERNMENT AGENCY

CORNER I.D.

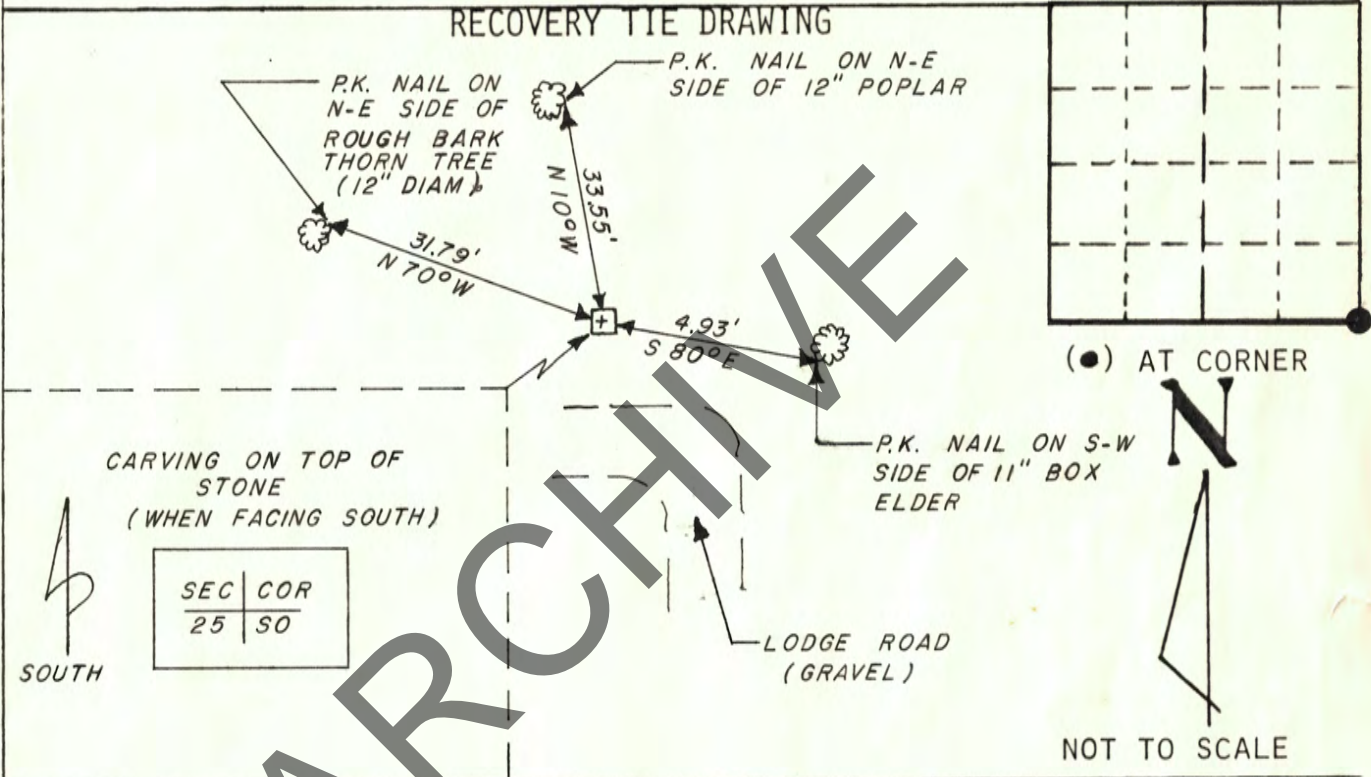
STATE OF INDIANA - COUNTY OF MONROE

SECTION 35, TOWNSHIP 8 NORTH, RANGE 2 WEST

MONUMENT DESCRIPTION & REMARKS

FOUND LIMESTONE STONE SOLID IN GROUND, STONE IS 0.50' X 0.50' X 0.40' HIGH. STONE IS 25 FEET ^{NORTH MET} SOUTH OF TRUE CORNER. AND HAS AN " X " ON TOP.

RECOVERY TIE DRAWING



CARVING ON TOP OF STONE (WHEN FACING SOUTH)

SEC	COR
25	50

SOUTH

NOT TO SCALE

STATE OF INDIANA

COUNTY OF MONROE

I, EDMUND O. FARKAS HEREBY CERTIFY THAT THIS DOCUMENT WAS PREPARED UNDER MY DIRECTION IN ACCORDANCE WITH THE PROVISIONS OF SECTION 17-3-64-4 - 17-3-64-8 OF THE INDIANA CODE, BEING ACTS OF 1965, CHAPTER 319; AND THE ABOVE DATA IS GIVEN UNDER MY HAND AND SEAL THIS 9 TH. DAY OF JUNE, 1983 A.D.

SPACE RESERVED FOR RECORDING OFFICER.

INDIANA REGISTERED LAND SURVEYOR NO. _____

OR _____

UNITED STATES GOVERNMENT AGENCY

TOWNSHIP: VAN BUREN

CORNER I.D.

U - 25

MCSR_B_Packet
PENDING

MONUMENT RECORD

Corner ID: **InCr_U01**

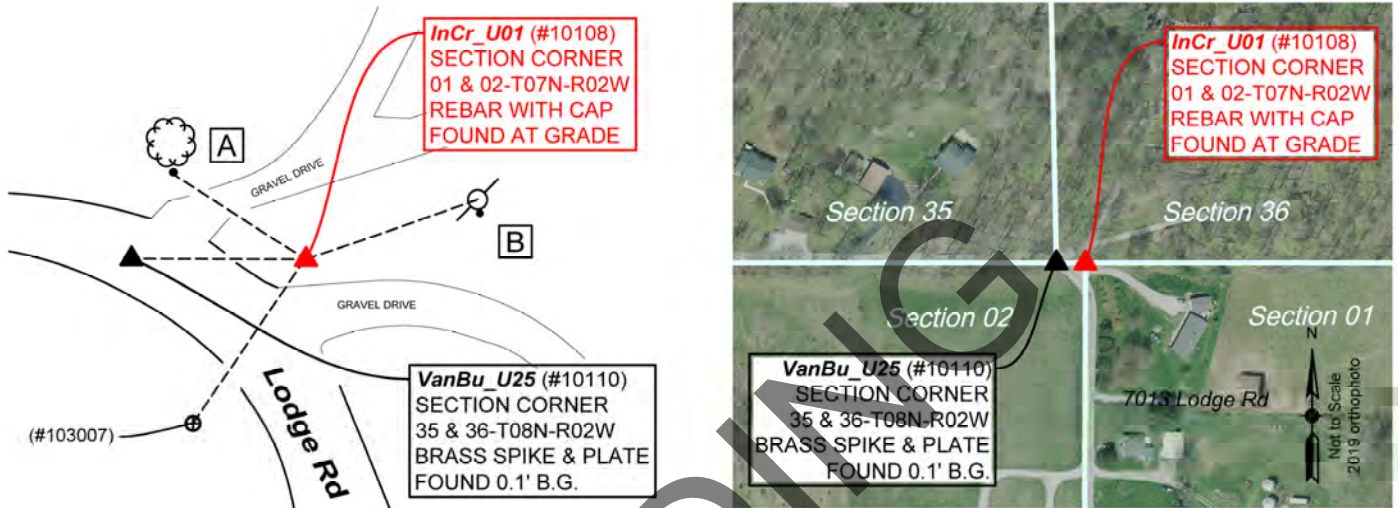
Section Corner

Sections 01 & 02- T07N-R02W, 2nd P.M.
Indian Creek Township, Monroe County, Indiana

Section 35 T08N-R02W Van Buren	Section 36 T08N-R02W Van Buren
Section 02 T07N-R02W Indian Creek	Section 01 T07N-R02W Indian Creek

MONUMENT: Describe monument set or found (Include material type, scribing, distance above/below grade, dimensions.)
5/8" Rebar with yellow cap stamped "BLEDSOE TAPP PC 50920004" in residential drainage area northeast of Lodge Road.

MONUMENT LOCATION SKETCH:



WITNESS MONUMENT TIES			
All ties to new Bearing Trees (BTs) are a mag nail set in a 1-1/2" plastic washer stamped "SURVEY MARKER - DO NOT REMOVE" and hack mark at the root crown (less than 12" above ground) perpendicular to the center of the tree, unless otherwise noted. BT diameters are noted as dbh and are measured approximately 4.5' above ground. Bearings are measured from the monument to the center of the BT, distances are measured from the monument to the mag nail.			
ID	BEARING	DISTANCE	DESCRIPTION
Witness A	N 57d W	41.4'	Found "Protect Nearby Survey Markers" sign on south side of a 14" sugar maple tree 5' above grade as per Witness C on the 2011 monument record.
Witness B	N 82d E	47.1'	Found mag nail 0.9' above grade on the south side of a 13" power line pole as per Witness E on the 2011 monument record.
MONUMENT ACCESSORIES			
Other survey grade monuments that were located in the vicinity and their relation to the monument.			
(#10110)	N 89d48'12" W	45.63'	Found Brass Spike & Plate 0.1' below grade.
(#103007)	S 34d11'10" W	52.18'	Found 5/8" rebar with 2" aluminum cap stamped "MONROE COUNTY SURVEYOR 109 S" and a "+" 0.2' below grade as per Witness E on 2004 monument record for VanBu_U25.



MCSR_B_Packet
PENDING

MONUMENT RECORD

02/21/2023
Corner ID: **InCr_U01**

Section Corner

Sections 01 & 02- T07N-R02W, 2nd P.M.
Indian Creek Township, Monroe County, Indiana

Section 35 T08N-R02W Van Buren	Section 36 T08N-R02W Van Buren
Section 02 T07N-R02W Indian Creek	Section 01 T07N-R02W Indian Creek

PHOTO IDENTIFIED: Photo Date: 06/16/2022



Photo Orientation & Description: InCr_U01 from above



Photo Orientation & Description: Looking north at InCr_U01 with VanBu_U25 to the west.



Photo Orientation & Description: Looking west at InCr_U01



Photo Orientation & Description: InCr_U01 from above.

ORIGINAL OR SUBSEQUENT SURVEY EVIDENCE FOUND: Include, search area or areas, search procedure, etc.
 Date of Field work/Search: 06/16/2022 & 06/27/2022 By: HJ & JG Monument Found: Rebar with Bledsoe Tapp Cap BTs or Reference Objects Found: Found witnesses B, C & E from 2011 monument record Project #: Van Buren Preservation Field Book: 54/66
 Equipment: The basis of bearings is Grid North System NAD83(2011)/Indiana West NAVD 88, Epoch 2010.0000, geoid12b_conus.db3, US Survey Feet, derived from GPS observations utilizing the Indiana Real-Time Network (INCORS). Coordinate data was collected with a Javad Triumph LS Network Rover. Coordinates are available upon request. Distances to witness ties were collected with a Leica Disto laser distance meter. Bearings to witness ties were collected with the internal magnetic compass of the Javad Triumph LS and were automatically adjusted to grid north and are approximately shown hereon for reference.



OFFICE OF THE MONROE COUNTY SURVEYOR • Trohn Enright-Randolph
119 W 7th Street, Bloomington, IN 47404 • 812-349-2570 • surveyoroffice@co.monroe.in.us



MONUMENT RECORD

02/21/2023

Corner ID: **InCr_U01**

Section Corner

Sections 01 & 02- T07N-R02W, 2nd P.M.
Indian Creek Township, Monroe County, Indiana

Section 35 T08N-R02W Van Buren	Section 36 T08N-R02W Van Buren
Section 02 T07N-R02W Indian Creek	Section 01 T07N-R02W Indian Creek

Priority should be given to provided distances over bearings. *Notes:* All witness photos on file in the Monroe County Surveyors Office.

OTHER EVIDENCE: Describe corner location relative to nearby features and how to reach the corner location – note fences, roads, timber cutting lines, mow lines, clearings, plantings, streams, topo changes, etc.

Proceeding from the east, from Rockport Road, Lodge Road curves south. InCr_U01 is located on this curve in a residential drainage area northeast of Lodge Road. Survey stakes, driveway markers, gravel and stone can be found in this shallow recess.

MONUMENT PRESERVATION: Describe work done to preserve existing monument.

Geodetic controls were captured for the monument and Witness (#103007) along with offset monument VanBu_U25. Limbs around the sugar maple tree hosting the “Protect Nearby Survey Markers” sign were trimmed for visibility.

THEORY OF LOCATION: Describe the theory of location for acceptance of this monument. Include monument origin and associated uncertainty.

The rebar was previously witnessed by the Monroe County Surveyor, Kevin Enright, on June 14, 2011 and accepted by the Monroe County Surveyor Review Board on November 15, 2011. The 2011 Monument Record accepted the rebar per a survey by Bernard A. Guerrettaz II, Davies Boundary Survey (2004) recorded as Instrument Number 2004020004.IN and a Dustin. Ballard survey, I-69 Section 4, Segment 8 East Zone Location Control Route Survey (2011) on file at the Recorder’s Office as 2011008296.IN. It is believed the rebar was set by Mr. Guerrettaz while performing a survey for JDC Group, Inc (2004) on file at the Recorder’s Office as 2004008399.IN. Other References on file: Rachel A. Oser plat, Stout Rockport Evans Administrative Type "E" Subdivision Final Plat (2014), on file at the Recorder’s Office as 2014011620.IN. Eric L. Deckard plat, on Elgar Sliding Scale Subdivision (2020), on file at the Recorder’s Office as 2020021880.IN. Final Plat Historic research has not yet been performed to prove the validity of this monument.

CERTIFICATION:

PENDING



OFFICE OF THE MONROE COUNTY SURVEYOR • Trohn Enright-Randolph

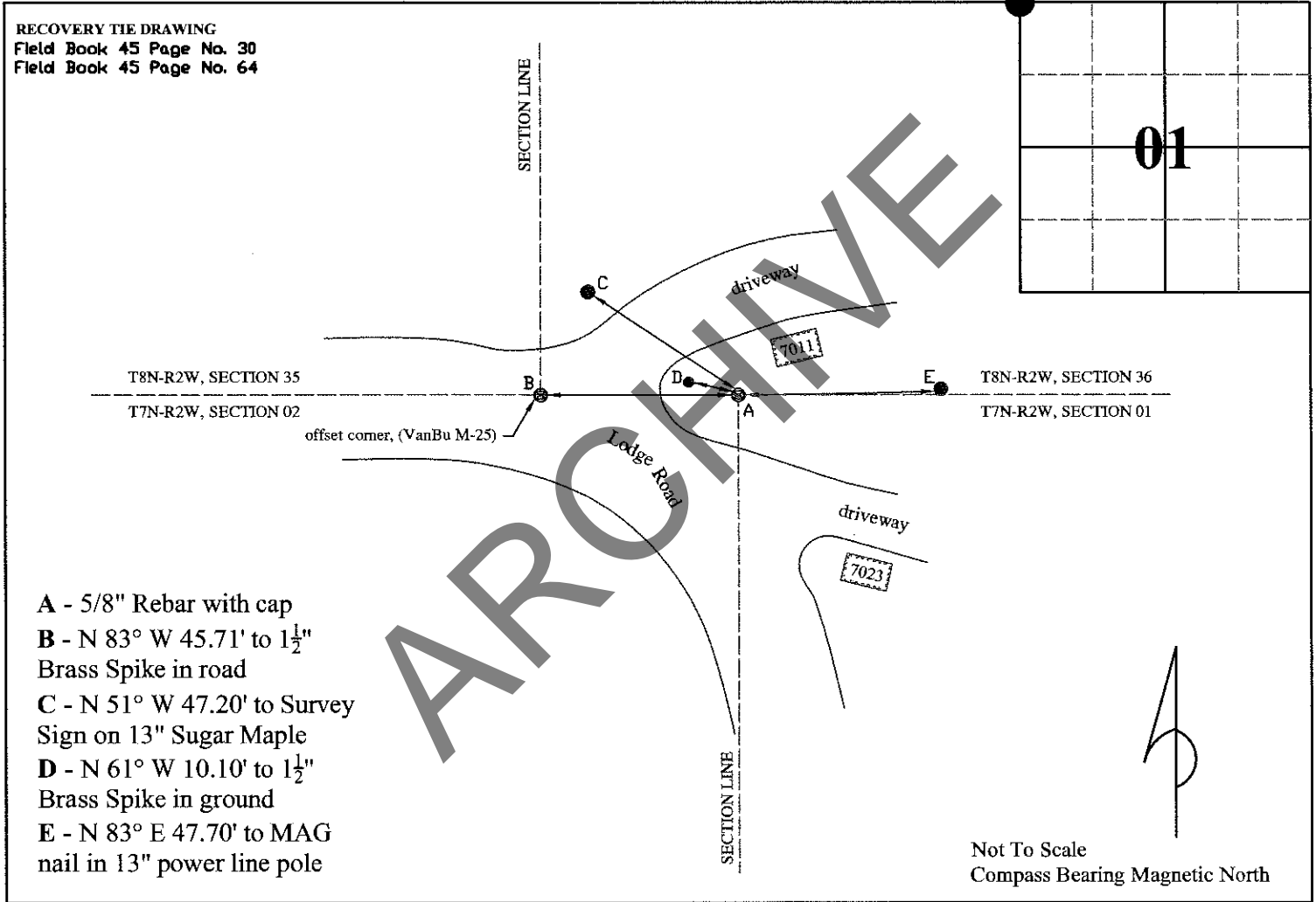
119 W 7th Street, Bloomington, IN 47404 • 812-349-2570 • surveyoroffice@co.monroe.in.us

MONUMENT RECORD
State of Indiana - County of Monroe

Section: 01 Township: 7 North Range: 2 West Corner ID: InCr U-01

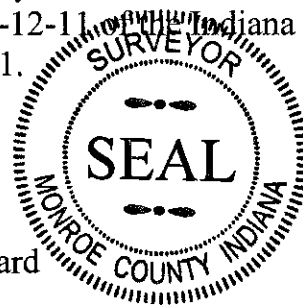
Monument Description & Remarks: 5/8" Rebar with cap, "Bledsoe-Tapp PC 50920004". Survey Sign 5ft above ground at pt. C

References On File: Bernard A. Guerrettaz survey, Charles Davis (2004), on file in Recorder Office cabinet S envelope 22B and (IN2004020004), Dustin Ballard survey, I-69 Section 4 (2011), on file in Recorder Office cabinet S2 envelope 45 and (IN2011008296)



I, Kevin P. Enright, Monroe County Surveyor, hereby certify that this document was prepared under my direction in accordance with the provisions of section 36-2-12-11 of the Indiana Code; and the above data is given under my hand and seal this 14th day of June, 2011.

Kevin P. Enright



Administered by the Monroe County Surveyor Review Board

Date: 11-15-2011
MCSR_B_Packet

MCSR_B_Packet
PENDING

MONUMENT RECORD

02/21/2023

Corner ID: **VanBu_Y17**

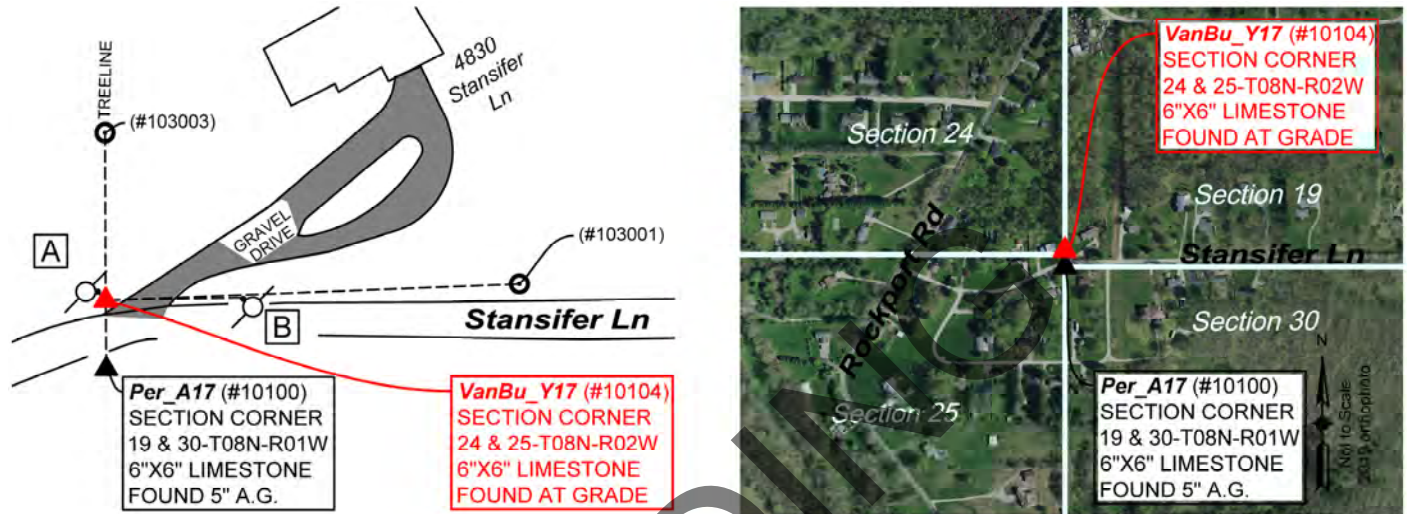
Section Corner

Sections 24 & 25- T08N-R02W, 2nd P.M.
Van Buren Township, Monroe County, Indiana

Section 24 T08N-R02W Van Buren	Section 19 T08N-R01W Perry
Section 25 T08N-R02W Van Buren	Section 30 T08N-R01W Perry

MONUMENT: Describe monument set or found (Include material type, scribing, distance above/below grade, dimensions.)
Found limestone with slight hole in center 6" x 6" flush to ground.

MONUMENT LOCATION SKETCH:



WITNESS MONUMENT TIES

All ties to new Bearing Trees (BTs) are a mag nail set in a 1-1/2" plastic washer stamped "SURVEY MARKER - DO NOT REMOVE" and hack mark at the root crown (less than 12" above ground) perpendicular to the center of the tree, unless otherwise noted. BT diameters are noted as dbh and are measured approximately 4.5' above ground. Bearings are measured from the monument to the center of the BT, distances are measured from the monument to the mag nail.

ID	BEARING	DISTANCE	DESCRIPTION
Witness A	N 42d W	4.9'	Mag nail found 0.4' above grade on the east side of an 11" power line pole as per 2004 monument record.
Witness B	N 85d E	56.3'	Mag nail found 0.4' above grade on the west side of an 11" power line pole as per 2004 monument record.

MONUMENT ACCESSORIES

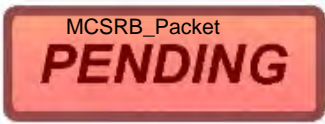
Other survey grade monuments that were located in the vicinity and their relation to the monument. Geodetic coordinates in this table are provided in the format Easting, Northing.

(#103003)	N 0d12'51" W	69.88'	3" x 7" Limestone found 7" above grade.
(#103001)	N 87d40'41" E	172.20'	Found 1/2" Rebar 2" west of power line pole 0.7' above grade.
(#10100)	S 0d36'48" E	29.4'	Found 6" X 6" Limestone 5" above grade.



OFFICE OF THE MONROE COUNTY SURVEYOR • Trohn Enright-Randolph

119 W 7th Street, Bloomington, IN 47404 • 812-349-2570 • surveyoroffice@co.monroe.in.us



MONUMENT RECORD

02/21/2023

Corner ID: **VanBu_Y17**

Section Corner

Sections 24 & 25- T08N-R02W, 2nd P.M.
Van Buren Township, Monroe County, Indiana

Section 24 T08N-R02W Van Buren	Section 25 T08N-R02W Van Buren	Section 19 T08N-R01W Perry	Section 30 T08N-R01W Perry
--------------------------------------	--------------------------------------	----------------------------------	----------------------------------

PHOTO IDENTIFIED: Photo Date: 06/03/2022



Photo Orientation & Description: VanBu_Y17 from above

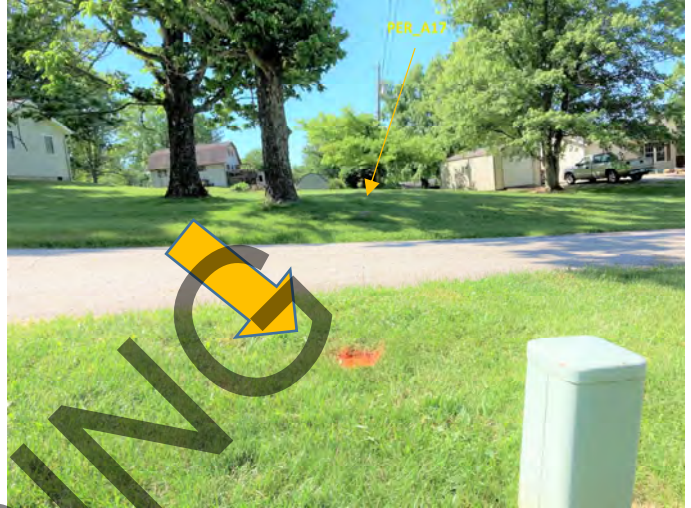


Photo Orientation & Description: Looking south at VanBu_Y17 & Per_A17

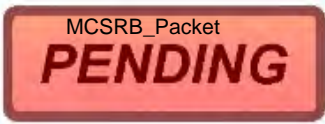
ORIGINAL OR SUBSEQUENT SURVEY EVIDENCE FOUND: *Include, search area or areas, search procedure, etc.*
 Date of Field work/Search: 05/20/2022 & 06/03/2022 By: JG & HJ Monument Found: Stone with slight circle at it's center BTs or Reference Objects Found: Found Witnesses B, C and D from 2004 monument record = Witnesses (#10104), A & B respectively. Witness E was probed for using geodetic controls supplied on 2004 monument record, but substantial grading had taken place recently. Project #: Van Buren_Y17 Field Book: 54/61 Equipment: The basis of bearings is Grid North System NAD83(2011)/Indiana West NAVD 88, Epoch 2010.0000, geoid12b_conus.db3, US Survey Feet, derived from GPS observations utilizing the Indiana Real-Time Network (INCORS). Coordinate data was collected with a Javad Triumph LS Network Rover. Coordinates are available upon request. Distances to witness ties were collected with a Leica Disto laser distance meter. Bearings to witness ties were collected with the internal magnetic compass of the Javad Triumph LS and were automatically adjusted to grid north and are approximately shown hereon for reference. Priority should be given to provided distances over bearings. Notes: All witness photos on file in the Monroe County Surveyors Office.

OTHER EVIDENCE: *Describe corner location relative to nearby features and how to reach the corner location – note fences, roads, timber cutting lines, mow lines, clearings, plantings, streams, topo changes, etc.*
 The monument is on the north side of the road between 4850 & 4830 S Stansifer Lane as you are moving east from Rockport Road. It is just west of a gravel drive. VanBu_Y17 is an offset corner for Per_A17. Each can be seen from the other's location.

MONUMENT PRESERVATION: *Describe work done to preserve existing monument.*
 The stone was tested to determine it's type and painted. Geodetic controls were captured for the monument and three of it's witnesses.

THEORY OF LOCATION: *Describe the theory of location for acceptance of this monument. Include monument origin and associated uncertainty.*
 The stone was previously witnessed by the Monroe County Surveyor, Steven V. Farkas, on July 19, 2004, using the work provided by Licensed Surveyor Eric L. Deckard (LS 29900012). Before that, the stone was previously witnessed by the Monroe County Surveyor, Edmund O. Farkas, on August 19, 1990. References on File: Tracy L. McGill survey, Location Route Control Survey Plat. Proposed I-69 Section 5 Victor Pike to S.R. 48 (3rd St.) (2013), on file at the Recorder's Office as 2013012750.IN, a Charles D.





MONUMENT RECORD

02/21/2023

Corner ID: **VanBu_Y17**

Section Corner

Sections 24 & 25- T08N-R02W, 2nd P.M.
Van Buren Township, Monroe County, Indiana

Section 24 T08N-R02W Van Buren	36	Section 19 T08N-R01W Perry
Section 25 T08N-R02W Van Buren		Section 30 T08N-R01W Perry

Graham plat, Cowden 2 – Lot Minor Subdivision (2019), on file at the Recorder’s Office as 2020001114.IN and a survey by Adam Christenberry, Location Route Survey for the Monroe County Highway Department Rockport Road Over Clear Creek (2021), on file at the Recorder’s Office as 2021016767.IN. Historic research has not yet been performed to prove the validity of this monument.

CERTIFICATION:

PENDING



OFFICE OF THE MONROE COUNTY SURVEYOR • Trohn Enright-Randolph

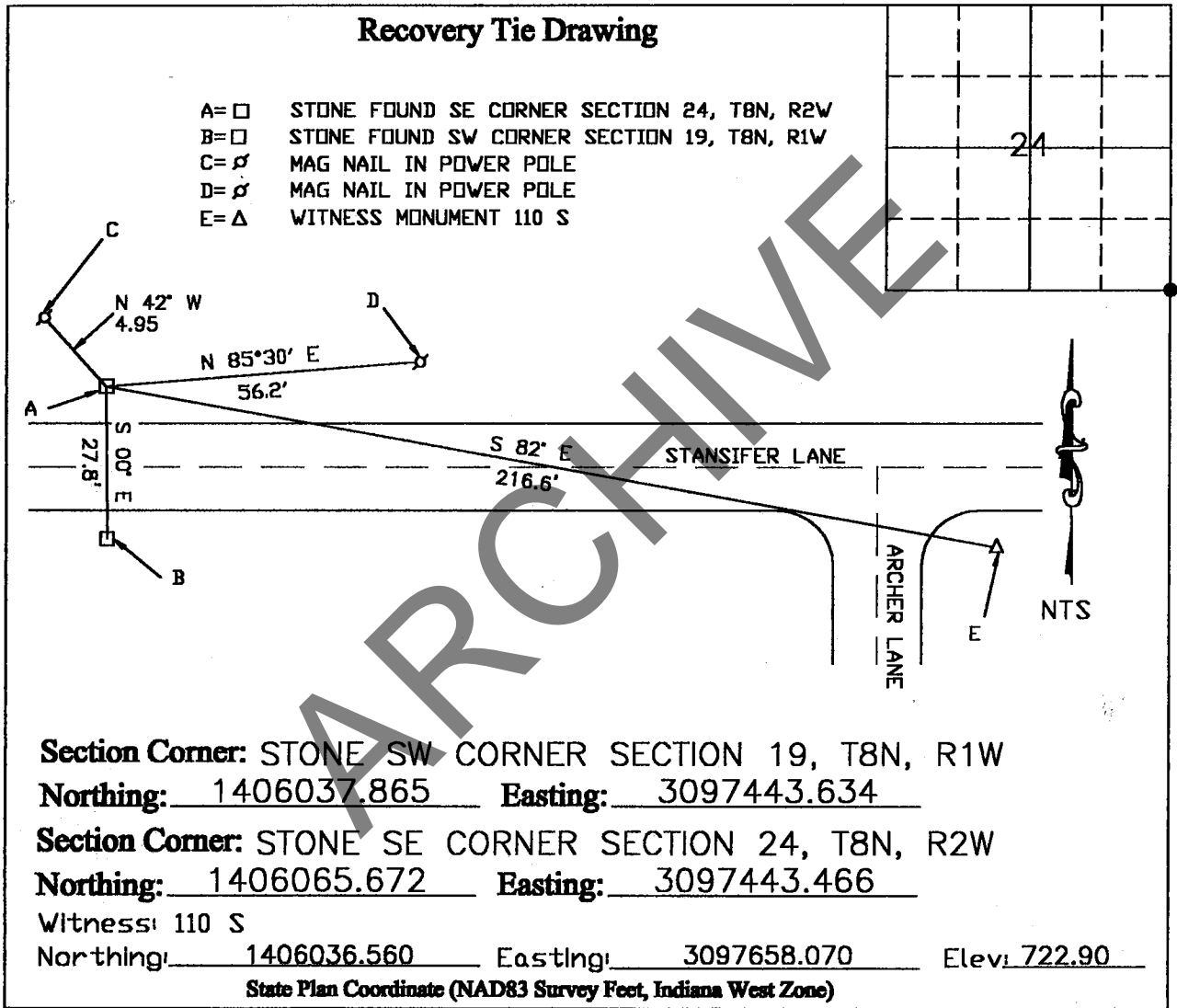
119 W 7th Street, Bloomington, IN 47404 • 812-349-2570 • surveyoroffice@co.monroe.in.us

MONUMENT RECORD

STATE OF INDIANA-COUNTY OF MONROE

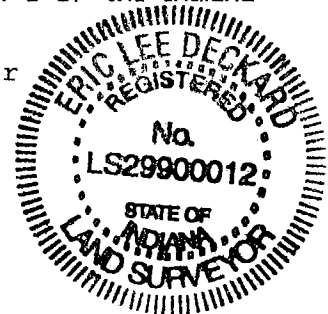
Section: 24, Township: 8 NORTH, Range: 2 WEST,

Monument Description & Remarks: STONE FOUND NO X SLIGHT HOLE IN CENTER
STONE 6" X 6" X 3" TALL



I, Eric Lee Deckard, here by certify that this document was prepared under my direction in accordance with the provisions of Section 17-3-64-4 through 17-3-64-8 of the Indiana Code, being Acts of 1965, Chapter 319; this 19th day of JULY, 2004 A.D.
Completed by Steven V. Farkas, Monroe County Surveyor

[Signature]
Indiana Registered Land Surveyor No. LS 29900012



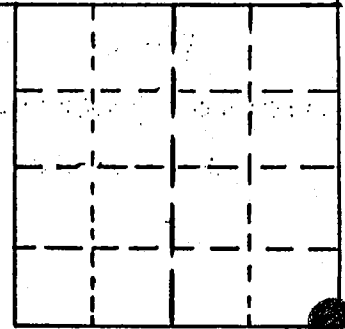
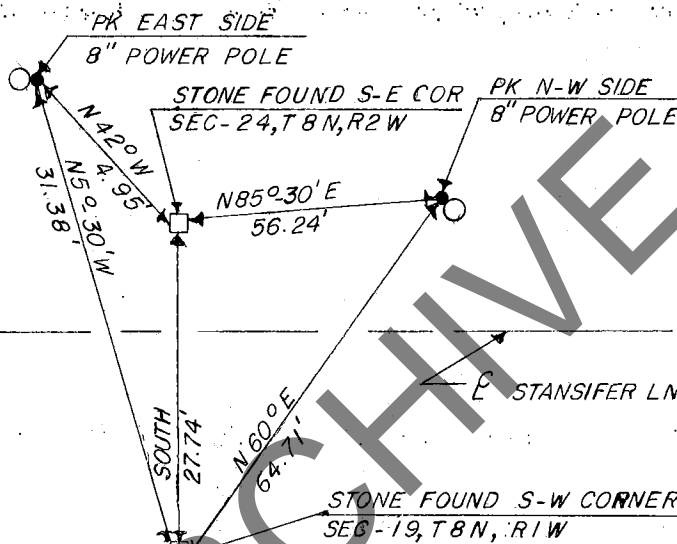
SECTION 24, TOWNSHIP 8 N, RANGE 2 W

MONUMENT DESCRIPTION & REMARKS

FOUND STONE SOLID IN GROUND NO "X" SLIGHT HOLE IN CENTER

STONE= 6" x 6" x 3" OUT OF GROUND

RECOVERY TIE DRAWING



(●) AT CORNER



NOT TO SCALE

STATE OF INDIANA
COUNTY OF MONROE

I, EDMUND O. FARKAS HEREBY CERTIFY THAT THIS DOCUMENT WAS PREPARED UNDER MY DIRECTION IN ACCORDANCE WITH THE PROVISIONS OF SECTION 17-3-64-4 - 17-3-64-8 OF THE INDIANA CODE, BEING ACTS OF 1965, CHAPTER 319; AND THE ABOVE DATA IS GIVEN UNDER MY HAND AND SEAL THIS 20 TH DAY OF AUGUST, 19 90 A.D.

SPACE RESERVED FOR RECORDING OFFICER.

INDIANA REGISTERED LAND SURVEYOR NO. _____

OR _____

UNITED STATES GOVERNMENT AGENCY

TOWNSHIP:
VAN BUREN

CORNER I.D.

Y-17

TITLE

MCSR_B_Packet
PENDING

MONUMENT RECORD

Corner ID: **Per_A17**

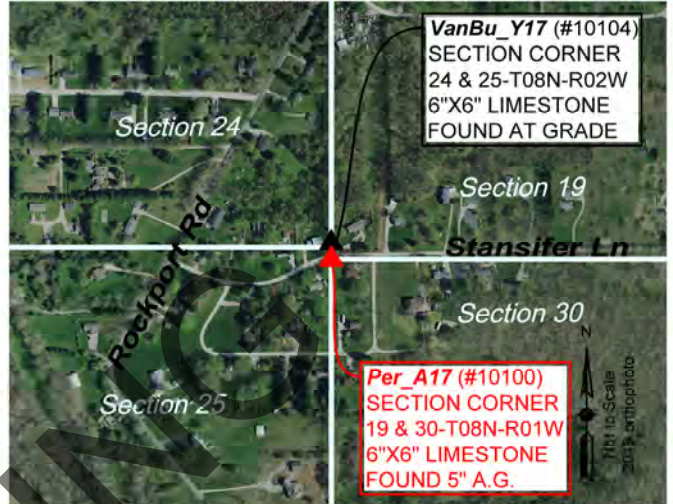
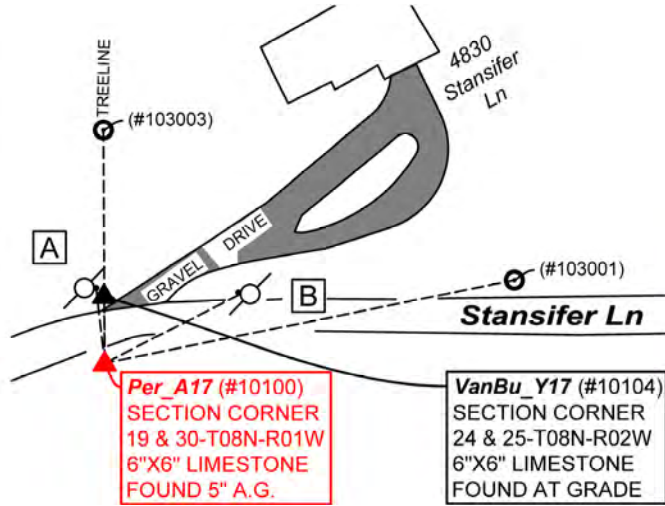
Offset Corner

Sections 25, 30 - T08N-R01W, 2nd P.M.
Perry Township, Monroe County, Indiana

Section 24 T08N-R02W Van Buren	Section 19 T08N-R01W Perry
Section 25 T08N-R02W Van Buren	Section 30 T08N-R01W Perry

MONUMENT: Describe monument set or found (Include material type, scribing, distance above/below grade, dimensions.)
Found 6" x 6" Limestone found 5" above grade +/- 6' south of Stansifer Lane

MONUMENT LOCATION SKETCH:



WITNESS MONUMENT TIES			
All ties to new Bearing Trees (BTs) are a mag nail set in a 1-1/2" plastic washer stamped "SURVEY MARKER - DO NOT REMOVE" and hack mark at the root crown (less than 12" above ground) perpendicular to the center of the tree, unless otherwise noted. BT diameters are noted as dbh and are measured approximately 4.5' above ground. Bearings are measured from the monument to the center of the BT, distances are measured from the monument to the mag nail.			
ID	BEARING	DISTANCE	DESCRIPTION
Witness A	N 7d W	31.8'	Mag nail found 0.4' above grade on the east side of an 11" power line pole as per 2004 monument record.
Witness B	N 63d E	64.0'	Mag nail found 0.4' above grade on the west side of an 11" power line pole as per 2004 monument record.
MONUMENT ACCESSORIES			
Other survey grade monuments that were located in the vicinity and their relation to the monument. Geodetic coordinates in this table are provided in the format Easting, Northing.			
(#103003)	N 0d19'41" W	97.82'	3" x 7" Limestone found 7" above grade.
(#103001)	N 78d31'4" E	175.40'	Found 1/2" rebar 2" west of power line pole 0.7' above grade.
(#10104)	N 0d36'48" W	29.4'	Found 6" X 6" Limestone with slight hole at grade.



OFFICE OF THE MONROE COUNTY SURVEYOR • Trohn Enright-Randolph

119 W 7th Street, Bloomington, IN 47404 • 812-349-2570 • surveyorsoffice@co.monroe.in.us

MCSR_B_Packet
PENDING

MONUMENT RECORD

Corner ID: **Per_A17**

Offset Corner

Sections 25, 30 - T08N-R01W, 2nd P.M.
Perry Township, Monroe County, Indiana

Section 24 T08N-R02W Van Buren	Section 19 T08N-R01W Perry
Section 25 T08N-R02W Van Buren	Section 30 T08N-R01W Perry

PHOTO IDENTIFIED: Photo Date: 05/20/2022 & 06/10/2022



Photo Orientation & Description: Per_A17 from above



Photo Orientation & Description: looking north at Per_A17



Photo Orientation & Description: Per_A17 from the southwest



Photo Orientation & Description: Per_A17 from the VanBu_Y17

ORIGINAL OR SUBSEQUENT SURVEY EVIDENCE FOUND: Include, search area or areas, search procedure, etc.

Date of Field work/Search: 5/20/2022 By: HJ & JG Monument Found: Stone 5" above ground BTs or Reference Objects Found: Witnesses C and D from the 2004 monument record were found Project #: VanBu_17 Field Book: 54/61 Equipment: Coordinate data was collected with a Javad Triumph LS Network Rover. The basis of bearings is Grid North NAD83(2011), Indiana West Zone, Epoch 2010.0000, Geoid Model G2012BU7, Datum NAD83_NO_TRANS, US Survey Feet, derived from GPS observations utilizing the Indiana Real-Time Network (INCORS). Distances obtained with GPS have not been adjusted to ground. Coordinates are available upon request. Notes: All witness photos on file in the Monroe County Surveyors Office.

OTHER EVIDENCE: Describe corner location relative to nearby features and how to reach the corner location – note fences, roads, timber cutting lines, mow lines, clearings, plantings, streams, topo changes, etc.

The monument is on the south side of the road between 4849 & 4841 S Stansifer Lane as you are moving east from Rockport Road. It is easily visible with no discernable landscaping between it and the road. Per_A17 is an offset corner of Van_U17.

MONUMENT PRESERVATION: Describe work done to preserve existing monument.

Geodetic Coordinates were collected for Per_A17 and VanBu_Y17 along with two new witnesses (#103003) and (#103001) here within.

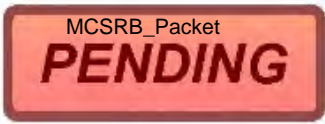
THEORY OF LOCATION: Describe the theory of location for acceptance of this monument. Include monument origin and associated uncertainty.

The stone was previously witnessed by the Monroe County Surveyor, Edmund O. Farkas, on August 20, 1990. References on File:



OFFICE OF THE MONROE COUNTY SURVEYOR • Trohn Enright-Randolph

119 W 7th Street, Bloomington, IN 47404 • 812-349-2570 • surveyorsoffice@co.monroe.in.us



MONUMENT RECORD

02/21/2023

Corner ID: **Per_A17**

Offset Corner

Sections 25, 30 - T08N-R01W, 2nd P.M.
Perry Township, Monroe County, Indiana

Section 24 T08N-R02W Van Buren	Section 19 T08N-R01W Perry
Section 25 T08N-R02W Van Buren	Section 30 T08N-R01W Perry

Tracy L. McGill survey, Location Route Control Survey Plat. Proposed I-69 Section 5 Victor Pike to S.R. 48 (3rd St.) (2013), on file at the Recorder's Office as 2013012750.IN, Adam Christenberry survey, Location Route Survey for the Monroe County Highway Department Rockport Road Over Clear Creek (2021), on file at the Recorder's Office as 2021016767.IN and an Eric Deckard survey, Bettner Boundary Survey (2021), on file at the Recorder's Office as 2021014997.IN. Historic research has not yet been performed to prove the validity of this monument.

CERTIFICATION:

PENDING



OFFICE OF THE MONROE COUNTY SURVEYOR • Trohn Enright-Randolph

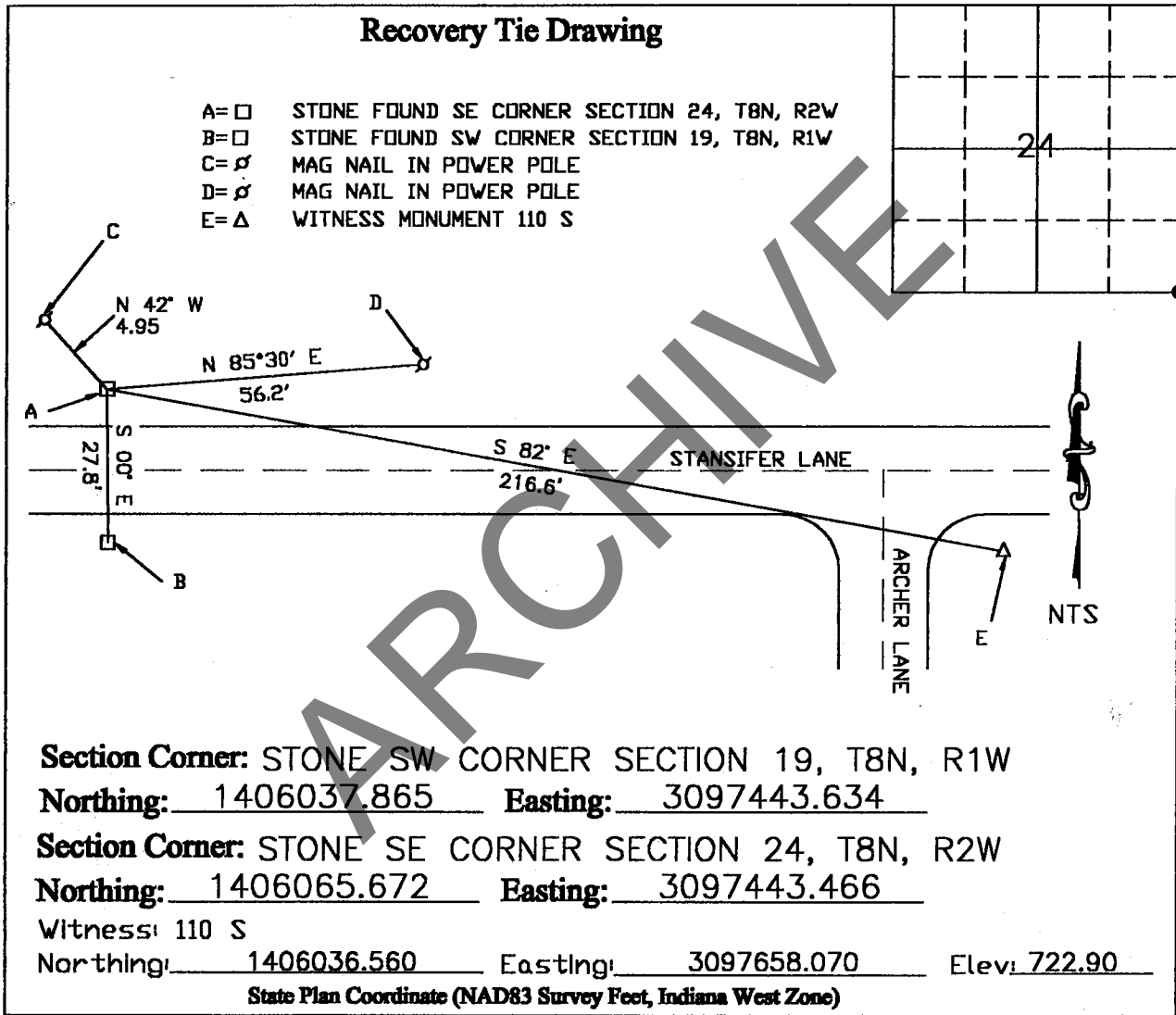
119 W 7th Street, Bloomington, IN 47404 • 812-349-2570 • surveyoroffice@co.monroe.in.us

MONUMENT RECORD

STATE OF INDIANA-COUNTY OF MONROE

Section: 24, Township: 8 NORTH, Range: 2 WEST,

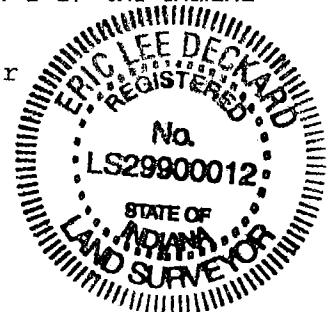
Monument Description & Remarks: STONE FOUND NO X SLIGHT HOLE IN CENTER
STONE 6" X 6" X 3" TALL



I, Eric Lee Deckard, here by certify that this document was prepared under my direction in accordance with the provisions of Section 17-3-64-4 through 17-3-64-8 of the Indiana Code, being Acts of 1965, Chapter 319; this 19th day of JULY, 2004 A.D.

Completed by Steven V. Farkas, Monroe County Surveyor

[Signature]
Indiana Registered Land Surveyor No. LS 29900012



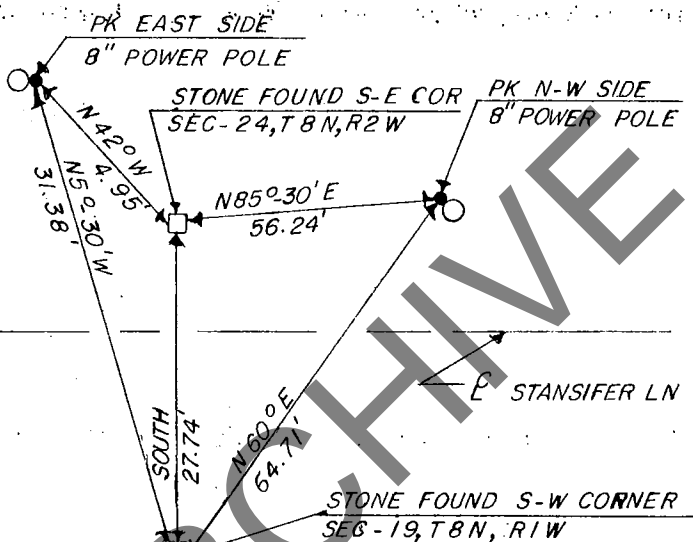
SECTION 19, TOWNSHIP 8 N, RANGE 1 W

MONUMENT DESCRIPTION & REMARKS

FOUND STONE SOLID IN GROUND WITH NO "X".

STONE= 6" x 6" x 1" OUT OF GROUND

RECOVERY TIE DRAWING



(●) AT CORNER



NOT TO SCALE

STATE OF INDIANA

COUNTY OF MONROE

I, EDMUND O. FARKAS HEREBY CERTIFY THAT THIS DOCUMENT WAS PREPARED UNDER MY DIRECTION IN ACCORDANCE WITH THE PROVISIONS OF SECTION 17-3-64-4 - 17-3-64-8 OF THE INDIANA CODE, BEING ACTS OF 1965, CHAPTER 319; AND THE ABOVE DATA IS GIVEN UNDER MY HAND AND SEAL THIS 20 TH DAY OF AUGUST, 19 90 A.D.

SPACE RESERVED FOR RECORDING OFFICER.

INDIANA REGISTERED LAND SURVEYOR NO. _____

OR _____

UNITED STATES GOVERNMENT AGENCY

TOWNSHIP: PERRY

CORNER I.D.

A-17

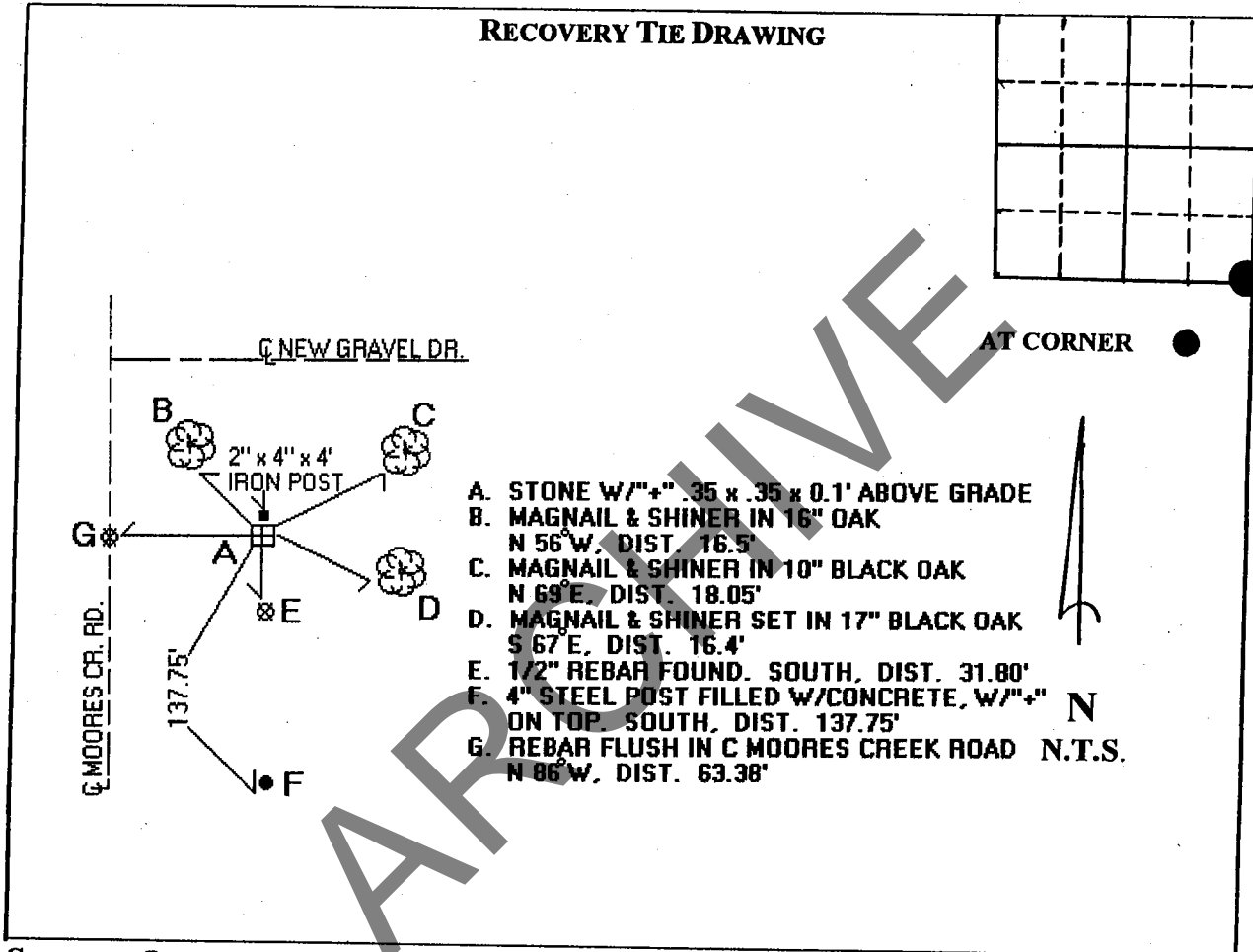
TITLE

MONUMENT RECORD

STATE OF INDIANA ~ COUNTY OF MONROE

SECTION 24, TOWNSHIP 8 NORTH, RANGE 1 WEST

MONUMENT DESCRIPTION & REMARKS: STONE WITH "+", 1' ABOVE GRADE;
4.5" x 4.5" x 0.1'; MARKING THE SOUTH EAST CORNER OF SECTION 24.



STATE OF INDIANA
COUNTY OF MONROE

I, STEVEN V. FARKAS, HEREBY CERTIFY THAT THIS DOCUMENT WAS
PREPARED UNDER MY DIRECTION IN ACCORDANCE WITH THE PROVISIONS OF SECTION
17-3-64-4 THROUGH 17-3-64-8 OF THE INDIANA CODE, BEING ACTS OF 1965, CHAPTER 319;
AND THE ABOVE DATA IS GIVEN UNDER MY HAND AND SEAL
THIS _____ DAY OF _____, 200__ A.D.

INDIANA REGISTERED LAND SURVEYOR No. _____ OR

UNITED STATES GOVERNMENT AGENCY

TITLE

FIELD BOOK: _____

PAGE: _____

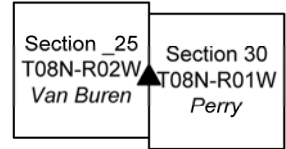
DRAFT #: 91

Corner ID: **VanBu_Y19**

Quarter Corner

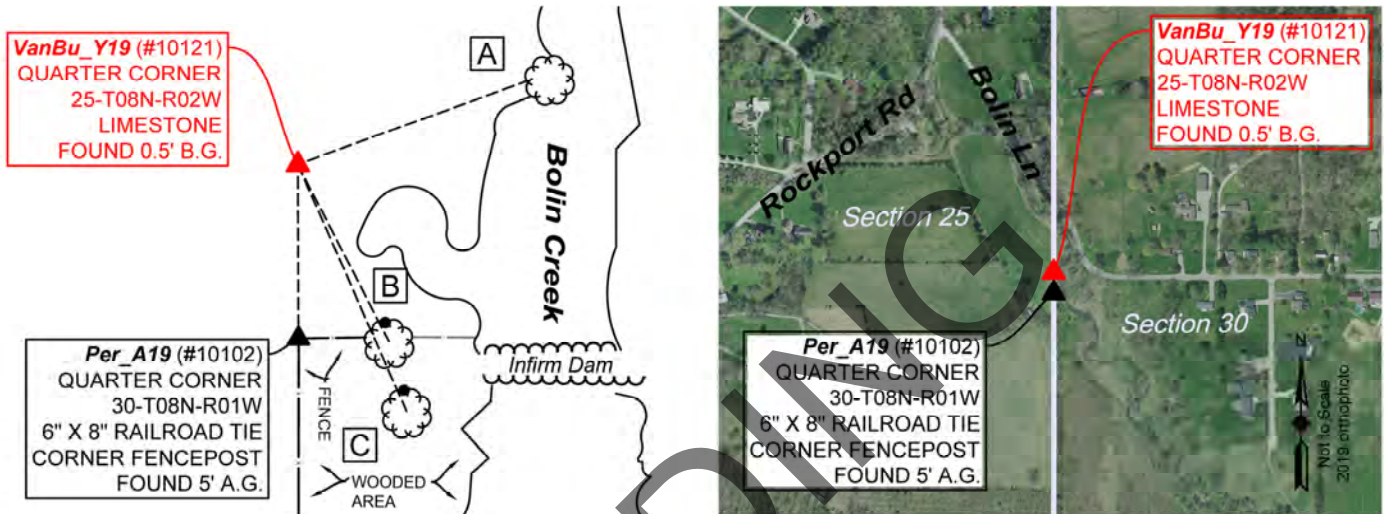
Section 25- T08N-R02W, 2nd P.M.

Van Buren Township, Monroe County, Indiana



MONUMENT: Describe monument set or found (Include material type, scribing, distance above/below grade, dimensions.)
 6" x 17" Limestone 6" below grade.

MONUMENT LOCATION SKETCH:



WITNESS MONUMENT TIES

All ties to new Bearing Trees (BTs) are a mag nail set in a 1-1/2" plastic washer stamped "SURVEY MARKER - DO NOT REMOVE" and hack mark at the root crown (less than 12" above ground) perpendicular to the center of the tree, unless otherwise noted. BT diameters are noted as dbh and are measured approximately 4.5' above ground. Bearings are measured from the monument to the center of the BT, distances are measured from the monument to the mag nail.

ID	BEARING	DISTANCE	DESCRIPTION
Witness A	N 70d E	38.3'	Measured to west face of 37" American Sycamore Tree. Eastern roots stretch into Bolin Creek.
Witness B	S 27d E	31.1'	Found magnetic signal on north side of 26" bifurcated Red Cedar as per Witness C on Per_A19's 2013 monument record.
Witness C	S 24d E	42.1'	Found magnetic signal on north side of 10" Black Walnut Tree as per Witness C on Per_A19's 2013 monument record.

MONUMENT ACCESSORIES

Other survey grade monuments that were located in the vicinity and their relation to the monument.

(#10102)	S 0d22'56" E	27.1'	Found 6" x 8" railroad tie corner fencepost 5' above grade.
----------	--------------	-------	---



02/21/2023
 Corner ID: **VanBu_Y19**

Quarter Corner

Section 25- T08N-R02W, 2nd P.M.

Van Buren Township, Monroe County, Indiana

Section 25 T08N-R02W Van Buren	Section 30 T08N-R01W Perry
--------------------------------------	----------------------------------

PHOTO IDENTIFIED: Photo Date: 02/07/2023



Photo Orientation & Description: VanBu_Y19 from above west side



Photo Orientation & Description: VanBu_Y19 from above east side



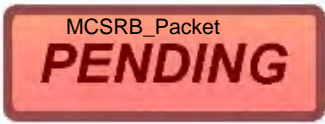
Photo Orientation & Description: Looking west at VanBu_Y19



Photo Orientation & Description: Looking east at VanBu_Y19, Per_A19 and Witnesses A, B & C

ORIGINAL OR SUBSEQUENT SURVEY EVIDENCE FOUND: Include, search area or areas, search procedure, etc.
 Date of Field work/Search: 02/07/2023 By: JG & HJ Monument Found: Limestone BTs or Reference Objects Found: N/A Project #: Van Buren Preservation Field Book: 55/24 Equipment: The basis of bearings is Grid North System NAD83(2011)/Indiana West NAVD 88, Epoch 2010.0000, geoid12b_conus.db3, US Survey Feet, derived from GPS observations utilizing the Indiana Real-Time Network (INCORS). Coordinate data was collected with a Javad Triumph LS Network Rover. Coordinates are available upon request. Distances to witness ties were collected with a 100' measuring tape. Bearings to witness ties were collected with the internal magnetic compass of the Javad Triumph LS and were automatically adjusted to grid north and are approximately shown hereon for reference. Priority should be given to provided distances over bearings. Notes: All witness photos on file in the Monroe County Surveyors Office.





MONUMENT RECORD

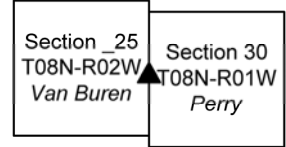
02/21/2023

Corner ID: **VanBu_Y19**

Quarter Corner

Section 25- T08N-R02W, 2nd P.M.

Van Buren Township, Monroe County, Indiana



OTHER EVIDENCE: Describe corner location relative to nearby features and how to reach the corner location – note fences, roads, timber cutting lines, mow lines, clearings, plantings, streams, topo changes, etc.

The monument is +/- 27' north of offset monument Per_A19, close to Bolin Creek. The best entry point is at the cattle gate at the southern intersection of Rockport Road and Bolin Lane. Driving along the western side of the parcel, one can find the low part of the creek and cross. From there, head southeasterly and look for survey signs and witnesses. During summer, the land is used to growing baling grass according to the owner.

MONUMENT PRESERVATION: Describe work done to preserve existing monument.

Monument was painted and buried with a magnet. "Protect Nearby Survey Marker" sign was set 8" east of the stone 3.5' above grade. Geodetic controls were captured for the monument and its offset corner. Three other witnesses were established. Owner was made aware of existence of monuments.

THEORY OF LOCATION: Describe the theory of location for acceptance of this monument. Include monument origin and associated uncertainty.

The stone is of unknown origin. Its location corroborates with the distance and bearings stated in the following documents: a survey by Marty James, Boundary Survey for Independent Limestone Company (2007), on file at the Recorder's Office as 2007006888.IN and a survey by Adam Christenberry, Location Route Survey for the Monroe County Highway Department Rockport Road Over Clear Creek (2021), on file at the Recorder's Office as 2021016767.IN. Historic research has not yet been performed to prove the validity of this monument.

CERTIFICATION:

PENDING



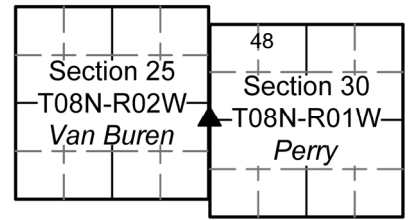
MCSR_B_Packet
PENDING

MONUMENT RECORD

Corner ID: **Per_A19**

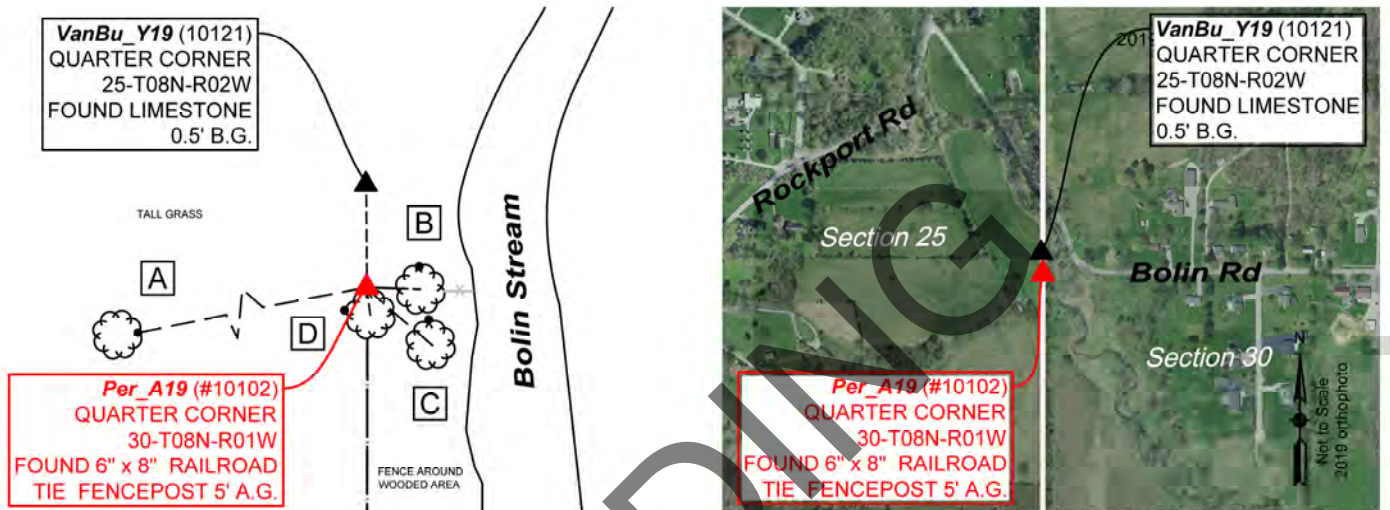
Quarter Corner

Section 30- T08N-R01W, 2nd P.M.
 Perry Township, Monroe County, Indiana



MONUMENT: Describe monument set or found (Include material type, scribing, distance above/below grade, dimensions.)
 Found 6" x 8" x 5' Railroad Tie Corner Fencepost leaning east yet solidly in place in concrete base.

MONUMENT LOCATION SKETCH:



WITNESS MONUMENT TIES			
<p>All ties to new Bearing Trees (BTs) are a mag nail set in a 1-1/2" plastic washer stamped "SURVEY MARKER - DO NOT REMOVE" and hack mark at the root crown (less than 12" above ground) perpendicular to the center of the tree, unless otherwise noted. BT diameters are noted as dbh and are measured approximately 4.5' above ground. Bearings are measured from the monument to the center of the BT, distances are measured from the monument to the mag nail.</p>			
ID	BEARING	DISTANCE	DESCRIPTION
Witness A	S 78d W	159.0'	Mag nail and washer set 30" above grade on the east side of a 9" black walnut tree.
Witness B	S 88d E	14.1'	Found magnetic signal 13" above grade on the north side of a 26" bifurcated red cedar tree as per 2013 monument record.
Witness C	S 56d E	20.3'	Found magnetic signal 11" above grade on the north side of an 11" black walnut tree as per 2013 monument record
Witness D	S 8d E	7.2'	Found magnetic signal 12" above grade on the north side of a 14" black walnut tree as per 2013 monument record.
MONUMENT ACCESSORIES			
<p>Other survey grade monuments that were located in the vicinity and their relation to the monument.</p>			
(#10121)	N 0d22'56" E	27.17'	Found Irregular Shaped Limestone 0.5' below grade.



MONUMENT RECORD

02/21/2023
Corner ID: **Per_A19**

Quarter Corner

Section 30- T08N-R01W, 2nd P.M.
Perry Township, Monroe County, Indiana

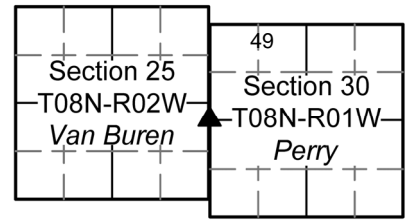


PHOTO IDENTIFIED: Photo Date: 06/03/2022



Photo Orientation & Description: Looking east at Per_A19 with witnesses B C & D present



Photo Orientation & Description: Looking southwest at Per_A19

ORIGINAL OR SUBSEQUENT SURVEY EVIDENCE FOUND: *Include, search area or areas, search procedure, etc.*
 Date of Field work/Search: 06/03/2022 By: JG & HJ Monument Found: Fencepost BTs or Reference Objects Found: Found Witnesses B, C & D from 2013 monument record Project #: Van Buren Preservation Field Book: 54/63 Equipment: The basis of bearings is Grid North System NAD83(2011)/Indiana West NAVD 88, Epoch 2010.0000, geoid12b_conus.db3, US Survey Feet, derived from GPS observations utilizing the Indiana Real-Time Network (INCORS). Coordinate data was collected with a Javad Triumph LS Network Rover. Coordinates are available upon request. Distances to witness ties were collected with a Leica Disto laser distance meter and with the 100' tape. Bearings to witness ties were collected with the internal magnetic compass of the Javad Triumph LS and were automatically adjusted to grid north and are approximately shown hereon for reference. Priority should be given to provided distances over bearings. Notes: All witness photos on file in the Monroe County Surveyors Office.

OTHER EVIDENCE: *Describe corner location relative to nearby features and how to reach the corner location – note fences, roads, timber cutting lines, mow lines, clearings, plantings, streams, topo changes, etc.*

The monument still held a “Protect Nearby Survey Markers” sign on its east side. The monument is a corner fencepost for the remains of a fence that runs north-south and west to east before terminating at the embankment of Bolin Creek. Per_A19 sits on a tract of land that runs parallel along the west side of Bolin Road. The land is primarily used growing baling grass according to the owner. The best way to access the land is at a cattle gate on the south intersection of Rockport Road and Bolin Road. Driving south along the west side of the parcel, one could cross the creek at it’s shallow point.

Per_A19 is an offset monument to VanBu_Y19. MCSO was able to excavate a stone that at offset coordinates and measurements provided in the Adam Christenberry survey referenced below.

MONUMENT PRESERVATION: *Describe work done to preserve existing monument.*
 Geodetic controls were captured for the monument at the center of its concrete base on the west side. The concrete base of the fencepost was partially unearthed. Still this post and its anchor would not budge when tested. A new sign was set on the west side for better visibility in hopes to protect the monument from machinery and livestock. A new witness was set on the west side of the field.





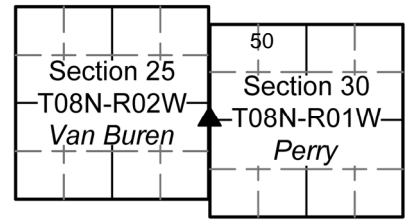
MONUMENT RECORD

02/21/2023

Corner ID: **Per_A19**

Quarter Corner

Section 30- T08N-R01W, 2nd P.M.
Perry Township, Monroe County, Indiana



THEORY OF LOCATION: Describe the theory of location for acceptance of this monument. Include monument origin and associated uncertainty. The fencepost was previously witnessed by the Monroe County Surveyor, Kevin Enright, on February 7, 2013 and accepted by the Monroe County Surveyor Review Board on February 26, 2013. The 2013 Monument Record accepted the fencepost per a plat by Phillip O. Tapp, Mark Freeman Administrative Subdivision (2002), recorded as Instrument Number 2002005200.IN; a location control route survey by Dustin Ballard, I-69 Section 4 Segment 9 (2011), on file at the Recorder's Office as 2011008297.IN; an Eric Deckard plat, Me-Me's Refuge Type D & Type E Administrative Subdivision (2012), on file at the Recorder's Office as a final plat under the instrument number 2013005242.IN. Other References on File: Tracy L McGill survey, Location Route Control Survey Plat Proposed I-69 Section 5 Victor Pike (2013), on file at the Recorder's Office as 2013012570.IN; Adam Christenberry survey, Location Route Survey for the Monroe County Highway Department Rockport Road Over Clear Creek (2021), on file at the Recorder's Office as 2021016767.IN. Historic research has not yet been performed to prove the validity of this monument.

CERTIFICATION:

PENDING



OFFICE OF THE MONROE COUNTY SURVEYOR • Trohn Enright-Randolph

119 W 7th Street, Bloomington, IN 47404 • 812-349-2570 • surveyoroffice@co.monroe.in.us

MONUMENT RECORD
State of Indiana - County of Monroe

Section: 30

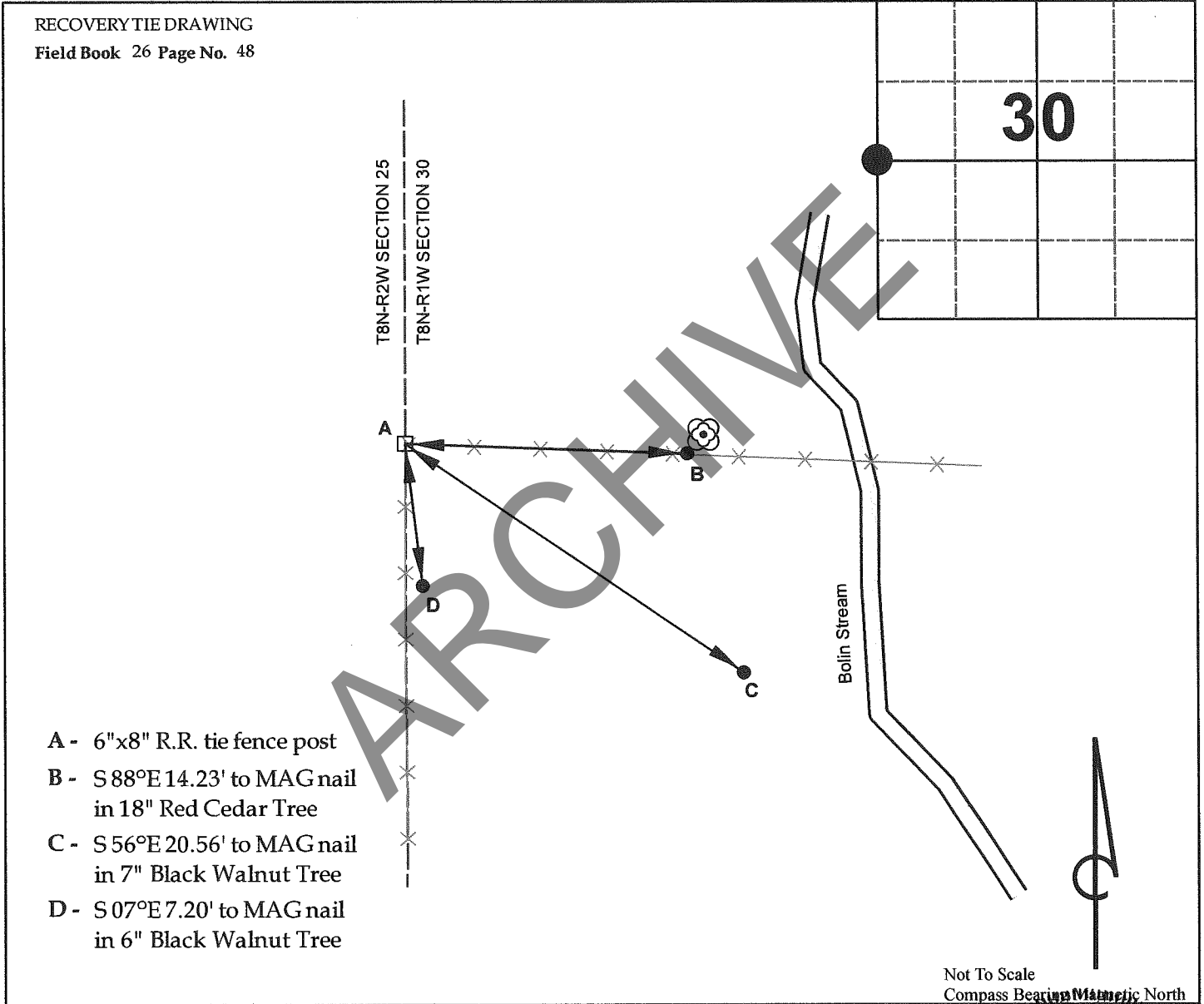
Township: 8 North

Range: 1 West

Corner ID: Per A-19

Monument Description & Remarks: 6"x8" R.R. tie fence post corner set in concrete. Survey Sign 4.5ft above ground at point A

References On File: Phillip O. Tapp survey, Mark Freeman (2002), on file in Recorder Office (IN2002005200); Dustin Ballard survey, I-69 Section 4 Segment 9 (2011), on file in Recorder Office (IN2011008297) & Eric Deckard survey, Me-Me's Refuge (2012), on file in Surveyor Office



I, Kevin P. Enright, Monroe County Surveyor, hereby certify that this document was prepared under my direction in accordance with the provisions of section 36-2-12-11 of the Indiana Code; and the data is given under my hand and seal this 7th day of February, 2013

Kevin P. Enright

Administered by the Monroe County Surveyor Review Board

2-26-2013

