



Office of the Monroe County Surveyor
Trohn Enright-Randolph

Health Services Building
119 West 7th Street
Bloomington, IN 47404
Phone: (812) 349-2570
surveyorsoffice@co.monroe.in.us

AGENDA
SURVEYOR REVIEW BOARD
HYBRID MEETING
Via Zoom App
Tuesday, April 18, 2023

- I. Call to Order**
- II. Approval of agenda**
- III. Approval of minutes from March 21, 2023**
- IV. New Business**
 - a. Office Update**
- V. Certification of corners:**
 - a. County Surveyor Perpetuation:**
 - i. Tabled Corners: Per_S21*, VanBu_Y17 & Per_A17**
 - ii. New Corners: Wash_E19, Wash_I17, Wash_M15, Wash_K17* & Wash_K21**
 - b. Corner Documentation Program:**
 - c. Professional Services Agreement:**
- VI. Public input**
- VII. Adoption of next meeting date**
- VIII. Adjournment**

**Has no previous certification*

Zoom Meeting Information

<https://monroecounty-in.zoom.us/j/83035503869?pwd=OEEd0Nkh4MlpaajBvcjFqazBpcE9tQT09>

Meeting ID: 830 3550 3869

Password: 515466

Dial by your location+1 312 626 6799 US (Chicago)

The meeting is open to the public. Dates are subject to change.

For additional information, please call the Office of the Monroe County Surveyor at (812) 349-2570.

Anyone who requires an auxiliary aid or service for effective communication, or a modification of policies or procedures to participate in a program, service, or activity of Monroe County, should contact Monroe County Title VI Coordinator, (812) 349-2553, as soon as possible but no later than forty-eight (48) hours before the scheduled event.

Individuals requiring special language services should, if possible, Government Title VI Coordinator at least seventy-two (72) hours prior to the date on which the services will be needed.

N:\Meetings_Boards_Committees_&_Commissions\Monroe_County_Surveyor_Review_Board\SRB2023\Packets\20230418\MCSR_B_Agenda_20230418.docx

Survey Utility



Page 1 of 1

MONROE COUNTY SURVEYOR REVIEW BOARD
HYBRID MEETING Via Zoom App
Tuesday, March 21, 2023, at 4:00 PM
MEETING MINUTES

MEMBERS PRESENT: Eric Deckard, Todd Borgman,

MEMBERS ABSENT: Rachel Oser

STAFF: Trohn Enright-Randolph, Jason George, Donna Barbrick, TSD

I. Call to Order by Trohn Enright at approximately 4:05 pm

II. Approval of agenda. Motion by Todd Borgman; seconded by Eric Deckard. VOTE: YES (unanimous). Agenda approved.

III. Approval of minutes from March 21, 2023. Motion by Eric Deckard; seconded by Todd Borgman. VOTE: YES (unanimous). Minutes approved.

IV. New Business

a. Office Update

Trohn Enright-Randolph gave a brief office update regarding revisions made to an MCSO template for service agreements. Deckard commented that he had received the revised version and converted it to CAD. He said it flowed better and he liked the layout. Trohn said regarding future requests for perpetuation services, particular areas of the county would be highlighted. He said that today marks 18 years working at the MCSO. He said he started in the second term of Kevin Enright and stayed with him until the end.

V. Certification of corners:

a. County Surveyor Perpetuation:

i. Tabled Corners: Per_S21*, VanBu_Y17, Per_A17, VanBu_Y19* & Per_A19

ii. New Corners: Wash_A05*, Wash_C05, Wash_E19, Wash_I17 & Wash_M15

b. Corner Documentation Program: none

c. Professional Services Agreement: none

Per_S21*. Trohn said this corner had been previously tabled. **Borgman motioned to table; Deckard seconded. VOTE: YES (unanimous). Motion to table carried.**

VanBu_Y17 and Per_A17. Trohn said these had been previously witnessed. Deckard noted a variance between the distance on the original tie and the distance on the new one. There was a discussion of coordinates being off and Deckard suggested comparing coordinates. **Motion by Borgman to table; seconded by Deckard. VOTE: YES (unanimous). VanBu_Y17 and Per_A17 tabled.**

VanBu_Y19* and Per_A19. For Van Buren Y19, Trohn said MCSO had found a stone that had not been previously certified. Jason George said it lined up very nicely. He said Marty James had called out the distance (but not the stone) on a 2007 survey. Deckard asked about the distance between Van Buren Y19 and Perry A19. Jason brought the MCSO copies of Lee Utt's township maps used for offset distances so the surveyors could reference them. Borgman and Deckard read over the survey report on the Marty James survey. Borgman noted a Steve Ramsey survey referenced (Deed Record 476 Page 301). **Motion by Deckard to approve the certification of this corner with the condition of adding the Steve Ramsey survey to the theory of location. Second by Borgman. VOTE: YES (unanimous). VanBu_Y19 approved.**

Motion by Borgman to approve Per_Y19 with the condition of adding the Steve Ramsey survey to the theory of location, if applicable. Second by Deckard. VOTE: YES (unanimous). Per_Y19 approved.

Wash_A05.* Trohn said this was a limestone found with a half-inch hole drilled in it. He displayed a pending tie sheet from 2000 during the Kevin Enright administration; it was never brought to the SRB. He said all the witnesses on the new tie sheet coordinate well with the witnesses on the old pending tie sheet. There was a discussion of declination and how old quad maps would show degrees of declination. Trohn read the theory of location. **Motion by Deckard to approve; seconded by Borgman. VOTE: YES (unanimous). Wash_A05 approved.**

Wash_C05. Jason said we used coordinates to get in the vicinity and finally tripped over it. Found rebar set in concrete flush to the ground. Trohn said this one was previously tied off. Trohn read the theory of location notes. He said the witnesses line up well with witnesses on the older tie sheet that was accepted in 2000 by the SRB. Borgman said don't you just wonder why it's set in concrete. Trohn said there were multiple magnetic signals found. Deckard asked to see the 1994 Bledsoe survey referenced. He discussed finding evidence of forestry markers being off. Trohn said there are going to be tricky moments in our goal of perpetuating the county. The surveyors looked over the Bledsoe survey. Deckard commented the monument was tied off on for purposes of the survey but was not really included in the area being surveyed. Trohn said I can understand the hesitation on this one. **Motion by Borgman to table; seconded by Deckard. VOTE: YES (unanimous). Wash_C05 tabled.**

Wash_E19, Wash_I17 & Wash_M15 tabled due to the time.

VI. Public input (none)

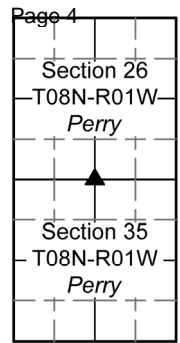
VII. Adoption of next meeting date: April 18, 2023, at 4:00 PM.

VIII. Adjournment at 5:19 p.m.

**Has no previous certification*

Minutes approved: _____

Added to corner record books _____



PENDING

MONUMENT RECORD

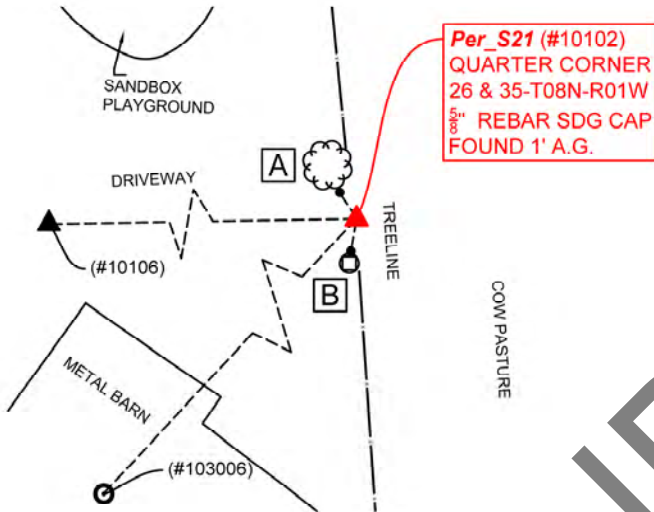
Corner ID: **Per_S21**

Quarter Corner

Sections 26 & 35- T08N-R01W, 2nd P.M.
Perry Township, Monroe County, Indiana

MONUMENT: Describe monument set or found (Include material type, scribing, distance above/below grade, dimensions.)
5/8" Rebar with yellow plastic cap stamped "SDG INC FIRM 0101" 1' above grade

MONUMENT LOCATION SKETCH:



All ties to new Bearing Trees (BTs) are a mag nail set in a 1-1/2" plastic washer stamped "SURVEY MARKER - DO NOT REMOVE" and hack mark at the root crown (less than 12" above ground) perpendicular to the center of the tree, unless otherwise noted. BT diameters are noted as dbh and are measured approximately 4.5' above ground. Bearings are measured from the monument to the center of the BT, distances are measured from the monument to the mag nail.

ID	BEARING	DISTANCE	DESCRIPTION
Witness A	N 33d W	4.5'	Mag nail and washer set in hack 0.2' above grade on the south side of a bifurcated (at grade) 11" white ash tree (south trunk only measured).
Witness B	S 10d W	5.0'	Mag nail and washer set 0.3' above grade on the north side of 4" x 4" x 4' wooden fence post.
MONUMENT ACCESSORIES			
<i>Other survey grade monuments that were located in the vicinity and their relation to the monument.</i>			
(#103006)	S 43d18'46" W	184.72'	5/8" rebar with yellow cap "SDG INC FIRM 0101" found at grade southwest of metal barn.
(#10106)	S 89d05'48" W	2611.49	Per_Q21 included herein to depict distance and bearing in survey referenced in Theory of Location (see below) a 5/8" rebar with yellow plastic cap stamped "KB POTTER RLS S 0487" found 0.1' below grade.



OFFICE OF THE MONROE COUNTY SURVEYOR • Trohn Enright-Randolph

119 W 7th Street, Bloomington, IN 47404 • 812-349-2570 • surveyoroffice@co.monroe.in.us

PENDING

MONUMENT RECORD

Corner ID: **Per_S21**

Quarter Corner

Sections 26 & 35- T08N-R01W, 2nd P.M.
Perry Township, Monroe County, Indiana

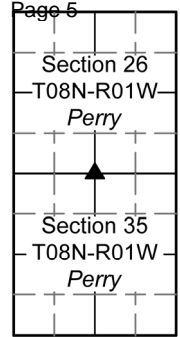


PHOTO IDENTIFIED: Photo Date: 7/22/2022



Photo Orientation & Description: Per_S21 from above



Photo Orientation & Description: Looking east at Per_S21 and Witnesses A & B

ORIGINAL OR SUBSEQUENT SURVEY EVIDENCE FOUND: Include, search area or areas, search procedure, etc.

Date of Field work/Search: 7/22/2022 By: JG & HJ Monument Found: Rebar with SDG Cap BTs or Reference Objects Found: N/A
Project #: Perry Preservation Field Book: 54/70 Equipment: The basis of bearings is Grid North System NAD83(2011)/Indiana West NAVD 88, Epoch 2010.0000, geoid12b_conus.db3, US Survey Feet, derived from GPS observations utilizing the Indiana Real-Time Network (INCORS). Coordinate data was collected with a Javad Triumph LS Network Rover. Coordinates are available upon request. Distances to witness ties were collected with a Leica Disto laser distance meter. Bearings to witness ties were collected with the internal magnetic compass of the Javad Triumph LS and were automatically adjusted to grid north and are approximately shown hereon for reference. Priority should be given to provided distances over bearings. Notes: All witness photos on file in the Monroe County Surveyors Office.

OTHER EVIDENCE: Describe corner location relative to nearby features and how to reach the corner location – note fences, roads, timber cutting lines, mow lines, clearings, plantings, streams, topo changes, etc.

Monument is located east of a fence line running north-south. The east side of a fence hosts livestock and the west side is the residence 5820 Handy Road. They have an oblong turnabout in the driveway, with a playground at its center. The monument is southeast of it.

MONUMENT PRESERVATION: Describe work done to preserve existing monument.

"Protect Nearby Survey Marker" sign was set 0.5' east of the monument at 3.5' above grade. Geodetic controls were captured for the monument and witnesses (#103006) & (10106). Two other witnesses were established. Homeowner was made aware of existence of monument.

THEORY OF LOCATION: Describe the theory of location for acceptance of this monument. Include monument origin and associated uncertainty.

The rebar was set by set by Licensed Surveyor, Todd M. Borgman (LS21200021), while performing the Morrison Type E Administrative Subdivision Final Plat (2020) on file at the Recorder's Office as 2021019410.IN. Historic research has not yet been performed to prove the validity of this monument.



OFFICE OF THE MONROE COUNTY SURVEYOR • Trohn Enright-Randolph

119 W 7th Street, Bloomington, IN 47404 • 812-349-2570 • surveyoroffice@co.monroe.in.us

Page 2 of 3

PENDING

MONUMENT RECORD

Corner ID: **VanBu_Y17**

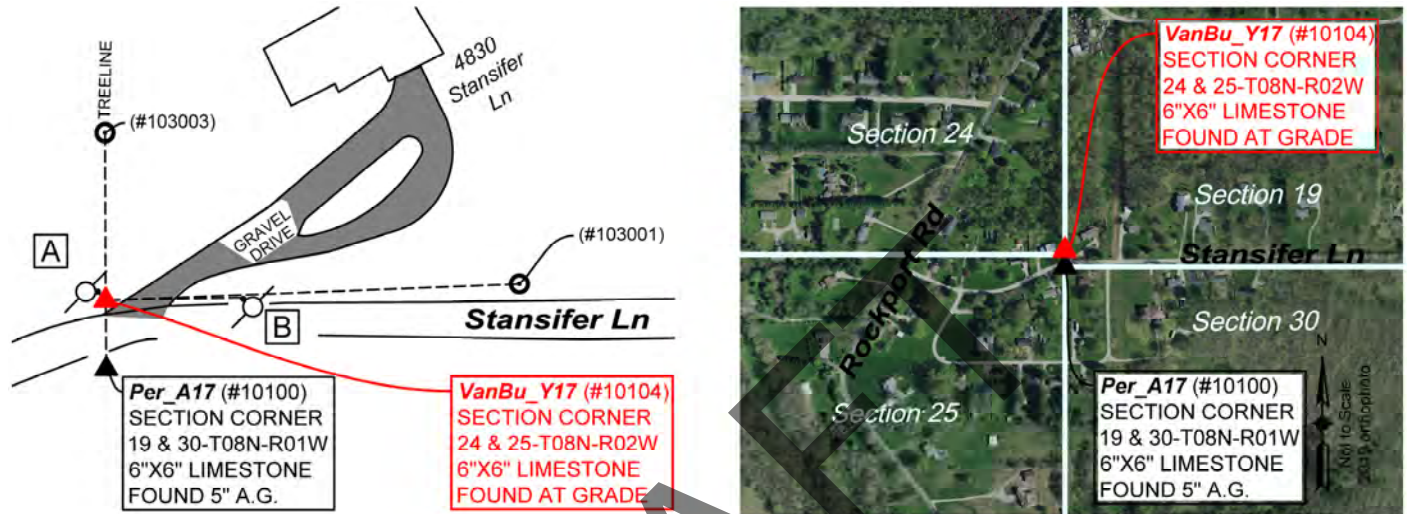
Section Corner

Sections 24 & 25- T08N-R02W, 2nd P.M.
Van Buren Township, Monroe County, Indiana

Section 24 T08N-R02W Van Buren	Section 19 T08N-R01W Perry
Section 25 T08N-R02W Van Buren	Section 30 T08N-R01W Perry

MONUMENT: Describe monument set or found (Include material type, scribing, distance above/below grade, dimensions.)
Found limestone with slight hole in center 6" x 6" flush to ground.

MONUMENT LOCATION SKETCH:



WITNESS MONUMENT TIES

All ties to new Bearing Trees (BTs) are a mag nail set in a 1-1/2" plastic washer stamped "SURVEY MARKER - DO NOT REMOVE" and hack mark at the root crown (less than 12" above ground) perpendicular to the center of the tree, unless otherwise noted. BT diameters are noted as dbh and are measured approximately 4.5' above ground. Bearings are measured from the monument to the center of the BT, distances are measured from the monument to the mag nail.

ID	BEARING	DISTANCE	DESCRIPTION
Witness A	N 42d W	4.9'	Mag nail found 0.4' above grade on the east side of an 11" power line pole as per 2004 monument record.
Witness B	N 85d E	56.3'	Mag nail found 0.4' above grade on the west side of an 11" power line pole as per 2004 monument record.

MONUMENT ACCESSORIES

Other survey grade monuments that were located in the vicinity and their relation to the monument. Geodetic coordinates in this table are provided in the format Easting, Northing.

(#103003)	N 0d12'51" W	69.88'	3" x 7" Limestone found 7" above grade.
(#103001)	N 87d40'41" E	172.20'	Found 1/2" Rebar 2" west of power line pole 0.7' above grade.
(#10100)	S 0d36'48" E	27.93'	Found 6" X 6" Limestone 5" above grade.



OFFICE OF THE MONROE COUNTY SURVEYOR • Trohn Enright-Randolph

119 W 7th Street, Bloomington, IN 47404 • 812-349-2570 • surveyoroffice@co.monroe.in.us

Section 24 T08N-R02W Van Buren	Section 19 T08N-R01W Perry
Section 25 T08N-R02W Van Buren	Section 30 T08N-R01W Perry

PENDING

MONUMENT RECORD

Corner ID: **VanBu_Y17**

Section Corner

Sections 24 & 25- T08N-R02W, 2nd P.M.
Van Buren Township, Monroe County, Indiana

PHOTO IDENTIFIED: Photo Date: 06/03/2022



Photo Orientation & Description: VanBu_Y17 from above



Photo Orientation & Description: Looking south at VanBu_Y17 & Per_A17

ORIGINAL OR SUBSEQUENT SURVEY EVIDENCE FOUND: *Include, search area or areas, search procedure, etc.*
Date of Field work/Search: 05/20/2022 & 06/03/2022 *By:* JG & HJ *Monument Found:* Stone with slight circle at it's center *BTs or Reference Objects Found:* Found Witnesses B, C and D from 2004 monument record = Witnesses (#10104), A & B respectively. Witness E was probed for using geodetic controls supplied on 2004 monument record, but substantial grading had taken place recently. *Project #:* Van Buren_Y17 *Field Book:* 54/61 *Equipment:* The basis of bearings is Grid North System NAD83(2011)/Indiana West NAVD 88, Epoch 2010.0000, geoid12b_conus.db3, US Survey Feet, derived from GPS observations utilizing the Indiana Real-Time Network (INCORS). Coordinate data was collected with a Javad Triumph LS Network Rover. Coordinates are available upon request. Distances to witness ties were collected with a Leica Disto laser distance meter. Bearings to witness ties were collected with the internal magnetic compass of the Javad Triumph LS and were automatically adjusted to grid north and are approximately shown hereon for reference. *Notes:* All witness photos on file in the Monroe County Surveyors Office.

OTHER EVIDENCE: *Describe corner location relative to nearby features and how to reach the corner location – note fences, roads, timber cutting lines, mow lines, clearings, plantings, streams, topo changes, etc.*

The monument is on the north side of the road between 4850 & 4830 S Stansifer Lane as you are moving east from Rockport Road. It is just west of a gravel drive. VanBu_Y17 is an offset corner for Per_A17. Each can be seen from the other's location.

MONUMENT PRESERVATION: *Describe work done to preserve existing monument.*

The stone was tested to determine it's type and painted. Geodetic controls were captured for the monument and three of it's witnesses.

THEORY OF LOCATION: *Describe the theory of location for acceptance of this monument. Include monument origin and associated uncertainty.*

The stone was previously witnessed by the Monroe County Surveyor, Steven V. Farkas, on July 19, 2004, using the work provided by Licensed Surveyor Eric L. Deckard (LS 29900012). Before that, the stone was previously witnessed by the Monroe County Surveyor, Edmund O. Farkas, on August 19, 1990. References on File: Tracy L. McGill survey, Location Route Control Survey Plat. Proposed I-69 Section 5 Victor Pike to S.R. 48 (3rd St.) (2013), on file at the Recorder's Office as 2013012750.IN, a Charles D.



OFFICE OF THE MONROE COUNTY SURVEYOR • Trohn Enright-Randolph

119 W 7th Street, Bloomington, IN 47404 • 812-349-2570 • surveyoroffice@co.monroe.in.us

Page 2 of 3



MONUMENT RECORD

Corner ID: **VanBu_Y17**

Section Corner

Sections 24 & 25- T08N-R02W, 2nd P.M.
Van Buren Township, Monroe County, Indiana

Page 8	
Section 24 T08N-R02W Van Buren	Section 19 T08N-R01W Perry
Section 25 T08N-R02W Van Buren	Section 30 T08N-R01W Perry

Graham plat, Cowden 2 – Lot Minor Subdivision (2019), on file at the Recorder's Office as 2020001114.IN and a survey by Adam Christenberry, Location Route Survey for the Monroe County Highway Department Rockport Road Over Clear Creek (2021), on file at the Recorder's Office as 2021016767.IN. Historic research has not yet been performed to prove the validity of this monument.

CERTIFICATION:

DRAFT



OFFICE OF THE MONROE COUNTY SURVEYOR • Trohn Enright-Randolph

119 W 7th Street, Bloomington, IN 47404 • 812-349-2570 • surveyoroffice@co.monroe.in.us

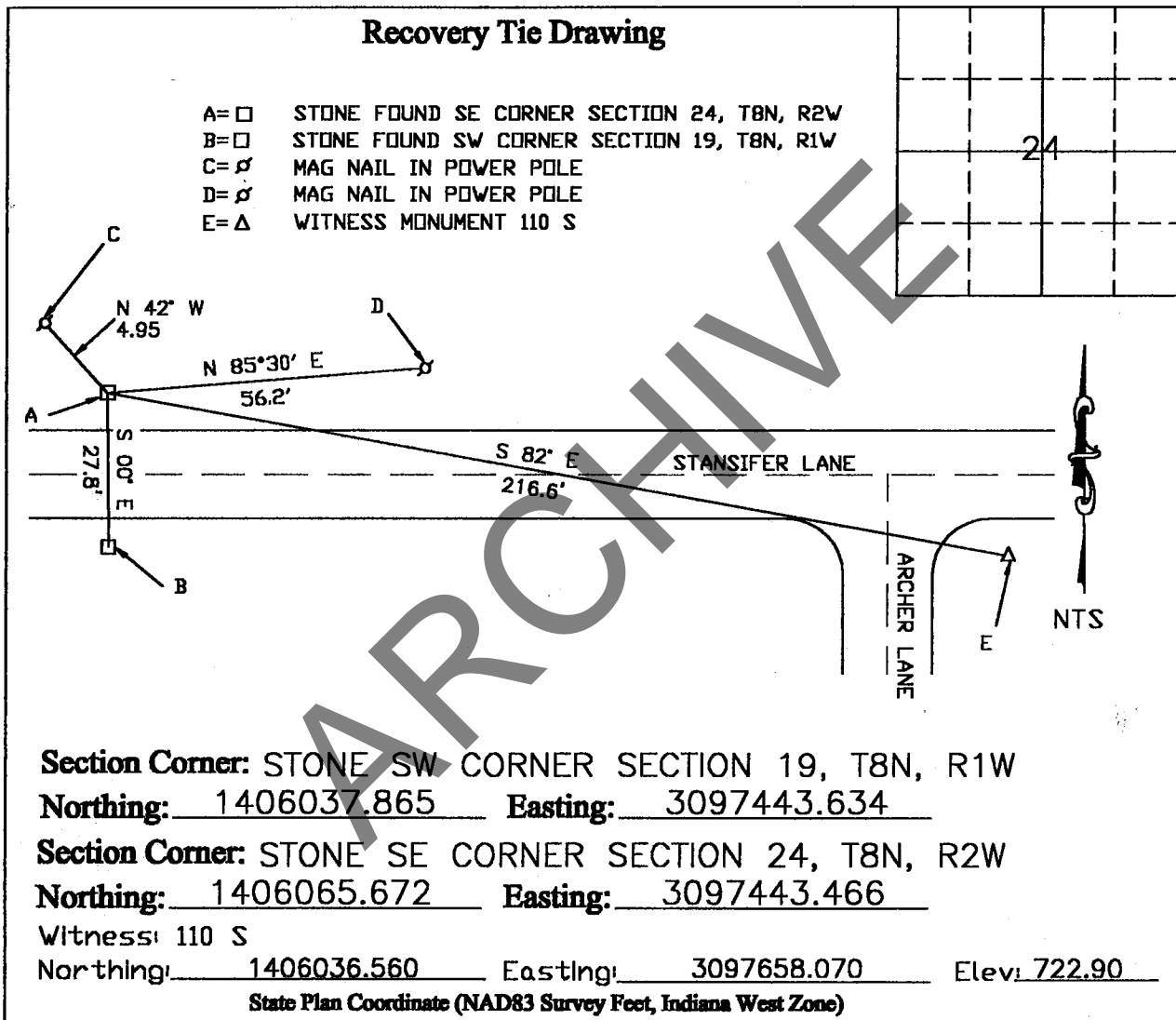
Corner I.D.# VAN BU Y-17

MONUMENT RECORD

STATE OF INDIANA-COUNTY OF MONROE

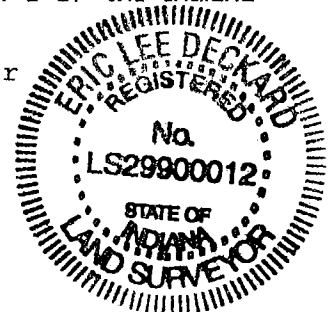
Section: 24, Township: 8 NORTH, Range: 2 WEST,

Monument Description & Remarks: STONE FOUND NO X SLIGHT HOLE IN CENTER
STONE 6" X 6" X 3" TALL



I, Eric Lee Deckard, here by certify that this document was prepared under my direction in accordance with the provisions of Section 17-3-64-4 through 17-3-64-8 of the Indiana Code, being Acts of 1965, Chapter 319; this 19th day of JULY, 2004 A.D.
 Completed by Steven V. Farkas, Monroe County Surveyor

[Signature]
 Indiana Registered Land Surveyor No. LS 29900012



STATE OF INDIANA - COUNTY OF MONROE

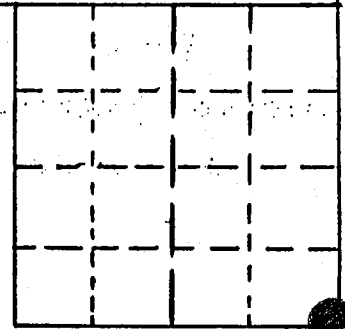
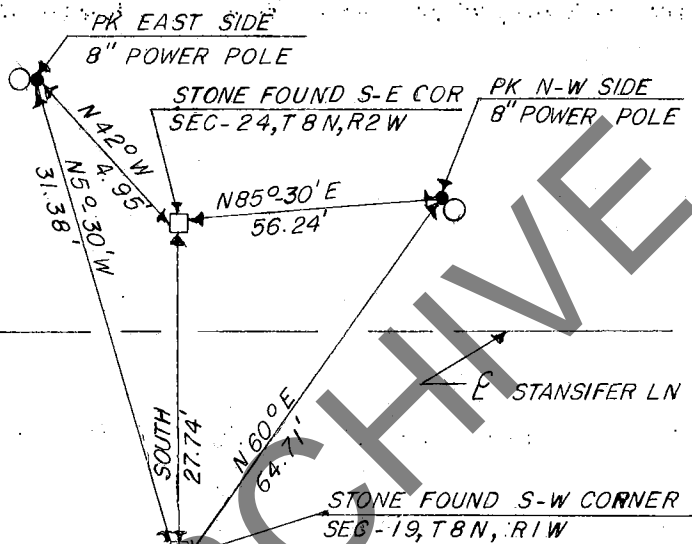
SECTION 24, TOWNSHIP 8 N, RANGE 2 W

MONUMENT DESCRIPTION & REMARKS

FOUND STONE SOLID IN GROUND NO "X" SLIGHT HOLE IN CENTER

STONE= 6" x 6" x 3" OUT OF GROUND

RECOVERY TIE DRAWING



(●) AT CORNER



NOT TO SCALE

STATE OF INDIANA

COUNTY OF MONROE

I, EDMUND O. FARKAS HEREBY CERTIFY THAT THIS DOCUMENT WAS PREPARED UNDER MY DIRECTION IN ACCORDANCE WITH THE PROVISIONS OF SECTION 17-3-64-4 - 17-3-64-8 OF THE INDIANA CODE, BEING ACTS OF 1965, CHAPTER 319; AND THE ABOVE DATA IS GIVEN UNDER MY HAND AND SEAL THIS 20 TH DAY OF AUGUST, 19 90 A.D.

SPACE RESERVED FOR RECORDING OFFICER.

INDIANA REGISTERED LAND SURVEYOR NO. _____

OR _____

UNITED STATES GOVERNMENT AGENCY

TOWNSHIP:
VAN BUREN

CORNER I.D.

Y-17

TITLE

PENDING

MONUMENT RECORD

Corner ID: **Per_A17**

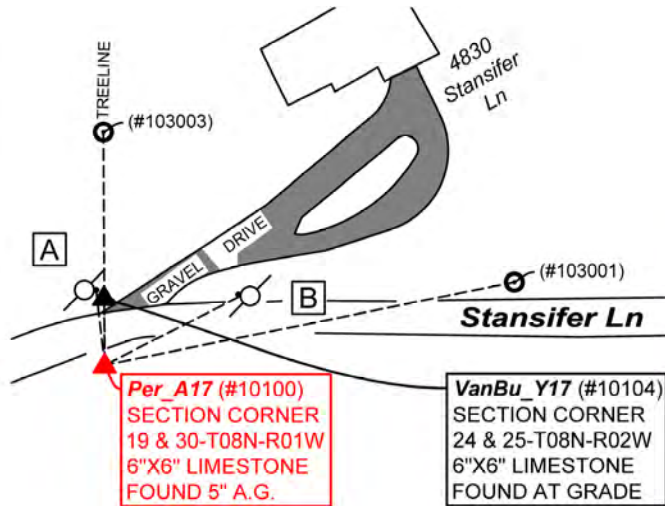
Offset Corner

Sections 25, 30 - T08N-R01W, 2nd P.M.
Perry Township, Monroe County, Indiana

Section 24 T08N-R02W Van Buren	Section 19 T08N-R01W Perry
Section 25 T08N-R02W Van Buren	Section 30 T08N-R01W Perry

MONUMENT: Describe monument set or found (Include material type, scribing, distance above/below grade, dimensions.)
Found 6" x 6" Limestone found 5" above grade +/- 6' south of Stansifer Lane

MONUMENT LOCATION SKETCH:



WITNESS MONUMENT TIES

All ties to new Bearing Trees (BTs) are a mag nail set in a 1-1/2" plastic washer stamped "SURVEY MARKER - DO NOT REMOVE" and hack mark at the root crown (less than 12" above ground) perpendicular to the center of the tree, unless otherwise noted. BT diameters are noted as dbh and are measured approximately 4.5' above ground. Bearings are measured from the monument to the center of the BT, distances are measured from the monument to the mag nail.

ID	BEARING	DISTANCE	DESCRIPTION
Witness A	N 7d W	31.8'	Mag nail found 0.4' above grade on the east side of an 11" power line pole as per 2004 monument record.
Witness B	N 63d E	64.0'	Mag nail found 0.4' above grade on the west side of an 11" power line pole as per 2004 monument record.

MONUMENT ACCESSORIES

Other survey grade monuments that were located in the vicinity and their relation to the monument.

(#103003)	N 0d19'41" W	97.82'	3" x 7" Limestone found 7" above grade.
(#103001)	N 78d31'4" E	175.40'	Found 1/2" rebar 2" west of power line pole 0.7' above grade.
(#10104)	N 0d36'48" W	27.93'	Found 6" X 6" Limestone with slight hole at grade.



OFFICE OF THE MONROE COUNTY SURVEYOR • Trohn Enright-Randolph

119 W 7th Street, Bloomington, IN 47404 • 812-349-2570 • surveyorsoffice@co.monroe.in.us

PENDING

MONUMENT RECORD

Corner ID: **Per_A17**

Offset Corner

Sections 25, 30 - T08N-R01W, 2nd P.M.
Perry Township, Monroe County, Indiana

Section 24 T08N-R02W Van Buren	Page 12 Section 19 T08N-R01W Perry
Section 25 T08N-R02W Van Buren	Section 30 T08N-R01W Perry

PHOTO IDENTIFIED: Photo Date: 05/20/2022 & 06/10/2022



Photo Orientation & Description: Per_A17 from above



Photo Orientation & Description: looking north at Per_A17



Photo Orientation & Description: Per_A17 from the southwest



Photo Orientation & Description: Per_A17 from the VanBu_Y17

ORIGINAL OR SUBSEQUENT SURVEY EVIDENCE FOUND: Include, search area or areas, search procedure, etc.
 Date of Field work/Search: 5/20/2022 By: HJ & JG Monument Found: Stone 5" above ground BTs or Reference Objects Found: Witnesses C and D from the 2004 monument record were found Project #: VanBu_17 Field Book: 54/61 Equipment: Coordinate data was collected with a Javad Triumph LS Network Rover. The basis of bearings is Grid North NAD83(2011), Indiana West Zone, Epoch 2010.0000, Geoid Model G2012BU7, Datum NAD83_NO_TRANS, US Survey Feet, derived from GPS observations utilizing the Indiana Real-Time Network (INCORS). Distances obtained with GPS have not been adjusted to ground. Coordinates are available upon request. Distances to witness ties were collected with a 100' measuring tape. Bearings to witness ties were collected with the internal magnetic compass of the Javad Triumph LS and were automatically adjusted to grid north and are approximately shown hereon for reference. Priority should be given to provided distances over bearings. Notes: All witness photos on file in the Monroe County Surveyors Office.

OTHER EVIDENCE: Describe corner location relative to nearby features and how to reach the corner location – note fences, roads, timber cutting lines, mow lines, clearings, plantings, streams, topo changes, etc.
 The monument is on the south side of the road between 4849 & 4841 S Stansifer Lane as you are moving east from Rockport Road. It is easily visible with no discernable landscaping between it and the road. Per_A17 is an offset corner of Van_U17.

MONUMENT PRESERVATION: Describe work done to preserve existing monument.
 Geodetic Coordinates were collected for Per_A17 and VanBu_Y17 along with two new witnesses (#103003) and (#103001) here within.



OFFICE OF THE MONROE COUNTY SURVEYOR • Trohn Enright-Randolph
 119 W 7th Street, Bloomington, IN 47404 • 812-349-2570 • surveyoroffice@co.monroe.in.us

PENDING

MONUMENT RECORD

Corner ID: **Per_A17**

Offset Corner

Sections 25, 30 - T08N-R01W, 2nd P.M.
Perry Township, Monroe County, Indiana

Section 24 T08N-R02W Van Buren	Page 13 Section 19 T08N-R01W Perry
Section 25 T08N-R02W Van Buren	Section 30 T08N-R01W Perry

THEORY OF LOCATION: *Describe the theory of location for acceptance of this monument. Include monument origin and associated uncertainty.*
 The stone was previously witnessed by the Monroe County Surveyor, Edmund O. Farkas, on August 20, 1990. References on File: Tracy L. McGill survey, Location Route Control Survey Plat. Proposed I-69 Section 5 Victor Pike to S.R. 48 (3rd St.) (2013), on file at the Recorder's Office as 2013012750.IN, Adam Christenberry survey, Location Route Survey for the Monroe County Highway Department Rockport Road Over Clear Creek (2021), on file at the Recorder's Office as 2021016767.IN and an Eric Deckard survey, Bettner Boundary Survey (2021), on file at the Recorder's Office as 2021014997.IN. Historic research has not yet been performed to prove the validity of this monument.

CERTIFICATION:

DRAFT



OFFICE OF THE MONROE COUNTY SURVEYOR • Trohn Enright-Randolph

119 W 7th Street, Bloomington, IN 47404 • 812-349-2570 • surveyoroffice@co.monroe.in.us

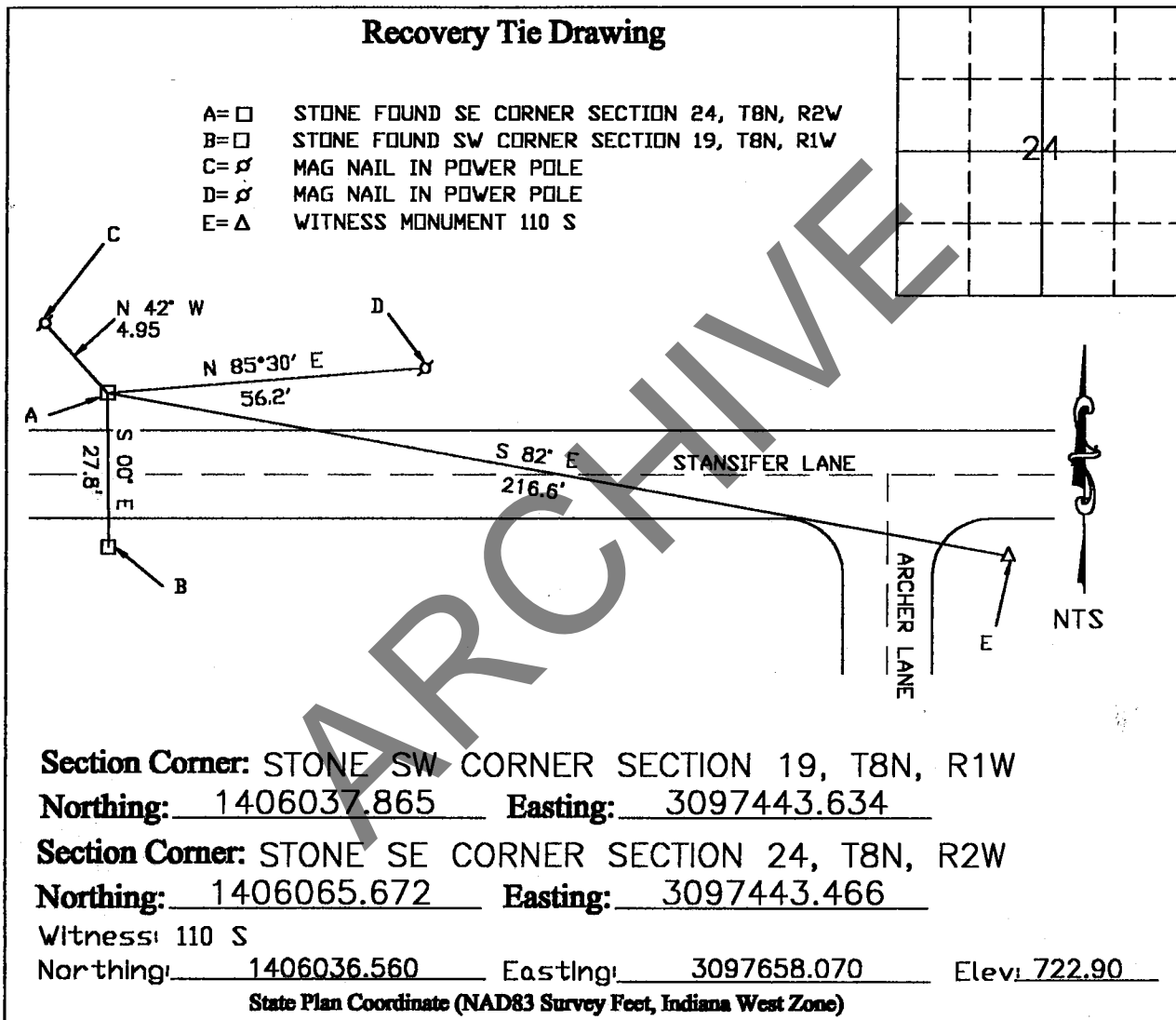
Corner I.D.# VAN BU Y-17

MONUMENT RECORD

STATE OF INDIANA-COUNTY OF MONROE

Section: 24, Township: 8 NORTH, Range: 2 WEST,

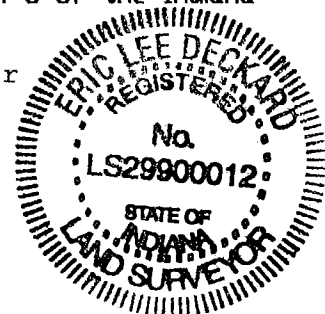
Monument Description & Remarks: STONE FOUND NO X SLIGHT HOLE IN CENTER
STONE 6" X 6" X 3" TALL



I, Eric Lee Deckard, here by certify that this document was prepared under my direction in accordance with the provisions of Section 17-3-64-4 through 17-3-64-8 of the Indiana Code, being Acts of 1965, Chapter 319; this 19th day of JULY, 2004 A.D.

Completed by Steven V. Farkas, Monroe County Surveyor

[Signature]
Indiana Registered Land Surveyor No. LS 29900012



STATE OF INDIANA - COUNTY OF MONROE

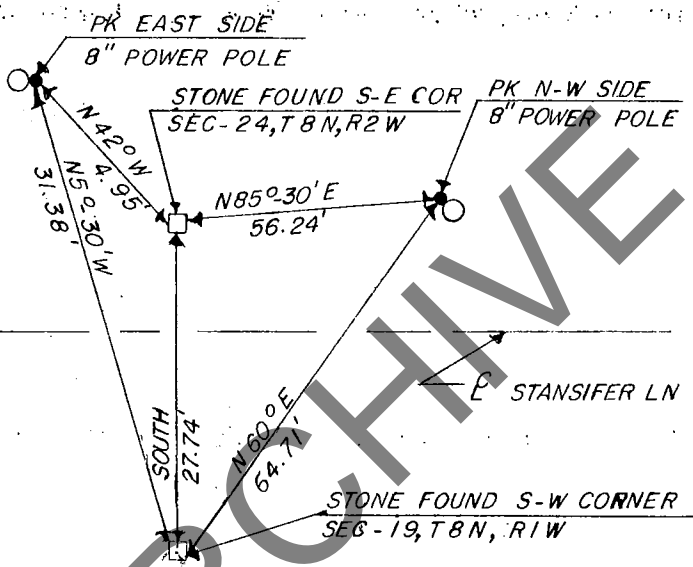
SECTION 19, TOWNSHIP 8 N, RANGE 1 W

MONUMENT DESCRIPTION & REMARKS

FOUND STONE SOLID IN GROUND WITH NO "X".

STONE= 6" x 6" x 1" OUT OF GROUND

RECOVERY TIE DRAWING



(●) AT CORNER



NOT TO SCALE

STATE OF INDIANA

COUNTY OF MONROE

I, EDMUND O. FARKAS HEREBY CERTIFY THAT THIS DOCUMENT WAS PREPARED UNDER MY DIRECTION IN ACCORDANCE WITH THE PROVISIONS OF SECTION 17-3-64-4 - 17-3-64-8 OF THE INDIANA CODE, BEING ACTS OF 1965, CHAPTER 319; AND THE ABOVE DATA IS GIVEN UNDER MY HAND AND SEAL THIS 20 TH DAY OF AUGUST, 19 90 A.D.

SPACE RESERVED FOR RECORDING OFFICER.

INDIANA REGISTERED LAND SURVEYOR NO. _____

OR _____

UNITED STATES GOVERNMENT AGENCY

TOWNSHIP:
PERRY

CORNER I.D.
A-17

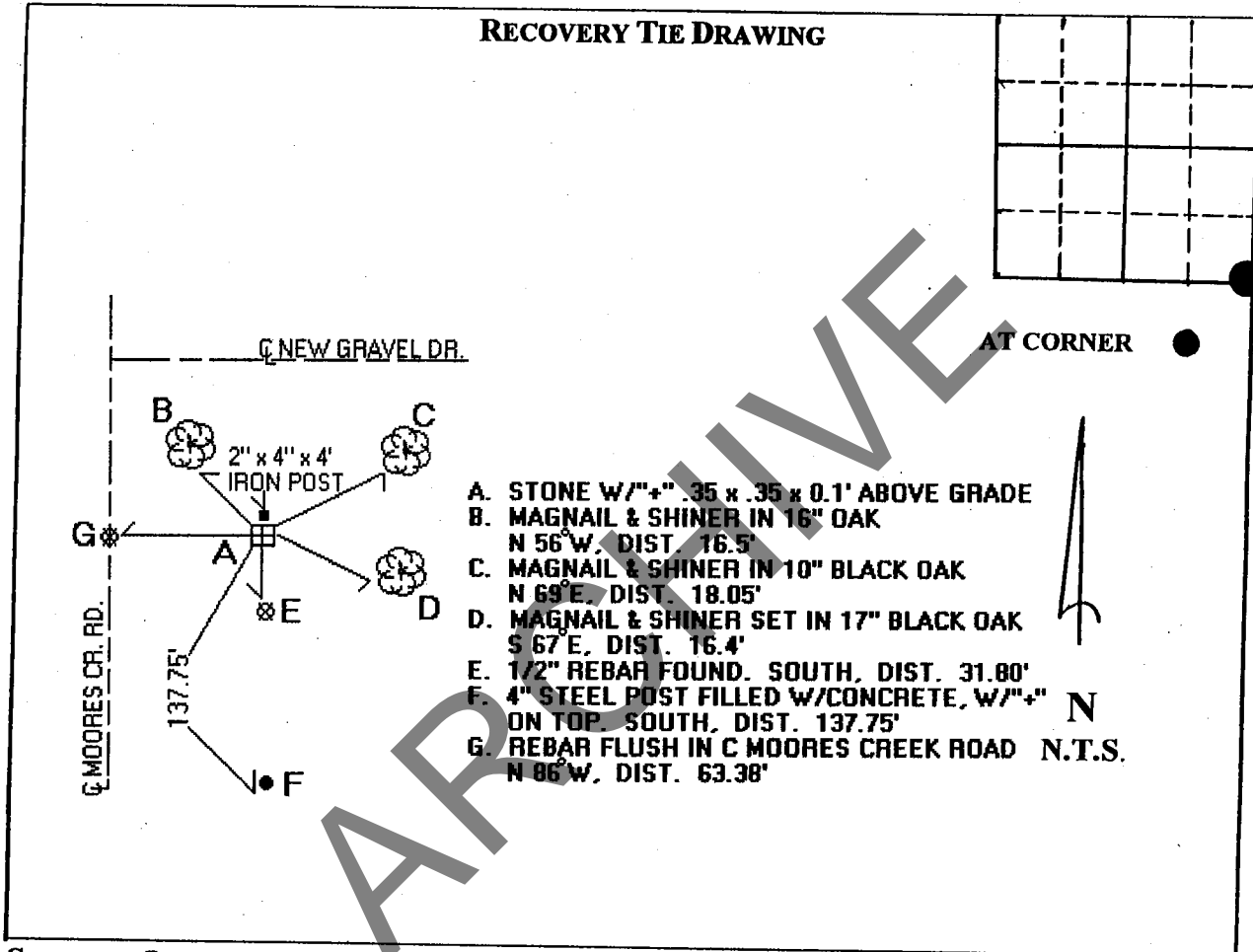
TITLE

MONUMENT RECORD

STATE OF INDIANA ~ COUNTY OF MONROE

SECTION 24, TOWNSHIP 8 NORTH, RANGE 1 WEST

MONUMENT DESCRIPTION & REMARKS: STONE WITH "+", 1' ABOVE GRADE;
4.5" x 4.5" x 0.1'; MARKING THE SOUTH EAST CORNER OF SECTION 24.



STATE OF INDIANA
COUNTY OF MONROE

I, STEVEN V. FARKAS, HEREBY CERTIFY THAT THIS DOCUMENT WAS
PREPARED UNDER MY DIRECTION IN ACCORDANCE WITH THE PROVISIONS OF SECTION
17-3-64-4 THROUGH 17-3-64-8 OF THE INDIANA CODE, BEING ACTS OF 1965, CHAPTER 319;
AND THE ABOVE DATA IS GIVEN UNDER MY HAND AND SEAL
THIS _____ DAY OF _____, 200__ A.D.

INDIANA REGISTERED LAND SURVEYOR No. _____ OR

UNITED STATES GOVERNMENT AGENCY

TITLE

FIELD BOOK: _____ PAGE: _____ DRAFT #: 91

PENDING

MONUMENT RECORD

Corner ID: **Wash_E19**

¼ Corner

**Sections 29 & 30-T10N-R01W, 2nd P.M.
Washington Township, Monroe County**

Section 30	Section 29
10N-R01W	10N-R01W
Washington	Washington

MONUMENT: Describe monument set or found (Include material type, scribing, distance above/below grade, dimensions.)
 Found 0.85' x 0.5' Sandstone with cut "X". Retraced cut for clarity 0.65 above grade.

MONUMENT LOCATION SKETCH:



WITNESS MONUMENT TIES

All ties to new Bearing Trees (BTs) are a mag nail set in a 1-1/2" plastic washer stamped "SURVEY MARKER - DO NOT REMOVE" and hack mark at the root crown (less than 12" above ground) perpendicular to the center of the tree, unless otherwise noted. BT diameters are noted as dbh and are measured approximately 4.5' above ground. Bearings are measured from the monument to the center of the BT, distances are measured from the monument to the mag nail.

ID	BEARING	DISTANCE	DESCRIPTION
Witness A	S 7d W	33.0'	Mag nail and washer set in hack 0.7' above grade on the southeast side of 19" American Beech Tree.
Witness B	N 71d E	37.0'	Found 20" Sugar Maple Tree as per 2000 monument record. No magnetic signal was found. Distance and bearings to center of southwest side 4.5' above grade.
Witness C	S 49d E	30.2'	Found magnetic signal 0.6' above grade on north side of 22" Sassafras Tree as per 2000 monument record.
Witness D	S 47d W	12.4'	Found 19" Sugar Maple as per 2000 monument record. No magnetic signal was found. Distance and bearings to center of northeast side 4.5' above grade.



OFFICE OF THE MONROE COUNTY SURVEYOR • Trohn Enright-Randolph

119 W 7th Street, Bloomington, IN 47404 • 812-349-2570 • surveyoroffice@co.monroe.in.us

PENDING

MONUMENT RECORD

Corner ID: **Wash_E19**

$\frac{1}{4}$ Corner

**Sections 29 & 30-T10N-R01W, 2nd P.M.
Washington Township, Monroe County**

Section 30	Section 29
10N-R01W	10N-R01W
Washington	Washington

PHOTO IDENTIFIED: Photo Date: 5/19/2022



Photo Orientation & Description: Wash_E19 from above



Photo Orientation & Description: Wash_E19 and survey sign from southwest.

ORIGINAL OR SUBSEQUENT SURVEY EVIDENCE FOUND: *Include, search area or areas, search procedure, etc.*

Date of Field work/Search: 5/11/2022 & 5/19/2022 By: JG & HJ Monument Found: Sandstone with "x" BTs or Reference Objects Found: Found all witnesses from 2000 monument record. Project #: Washington Monuments Field Book: 54/57 Equipment: Coordinate data was collected with a Javad Triumph LS Network Rover and a Javad Triumph 2 Base. The basis of bearings is Grid North NAD83(2011), Indiana West Zone, Epoch 2010.0000, Geoid Model G2012BU7, Datum NAD83_NO_TRANS, US Survey Feet, derived from GPS observations utilizing the Indiana Real-Time Network (INCORS) Distances were obtained a 100' measuring tape. Bearing to witness ties were collected with the internal magnetic compass of the Javad Triumph LS and were automatically adjusted to grid north and are approximately shown hereon for reference. Priority should be given to distances over bearings. Notes: All witness photos on file in the Monroe County Surveyors Office.

OTHER EVIDENCE: *Describe corner location relative to nearby features and how to reach the corner location – note fences, roads, timber cutting lines, mow lines, clearings, plantings, streams, topo changes, etc.*

Approximately .25 miles from Bottom Road, a "Protect Nearby Survey Marker" sign can be seen from Williams Road, when looking west and down in an area of declining elevation. From this point proceed into the woods northwesterly.

MONUMENT PRESERVATION: *Describe work done to preserve existing monument.*

"Protect Nearby Survey Marker" sign was removed from wires and refastened with conduits, 5' above grade, north and adjacent from monument. Stone was tested for acidity. "X" was retraced for clarity. Stone was painted orange. Geodetic controls for the monument were collected.

THEORY OF LOCATION: *Describe the theory of location for acceptance of this monument. Include monument origin and associated uncertainty.*

The stone was previously witnessed by the Monroe County Surveyor, Kevin Enright, on March 17, 2000 and accepted by the Monroe County Surveyor Review Board on November 02, 2000. The 2000 Monument Record accepted the stone per reports by surveyor Mike Mundy. The 2000 monument record describing the monument as sandstone contradicts a Michael Sheppard survey, ALTA/ACSM Land Title Survey 477.8 Acres (2007), on file at the Recorder's Office as 2007012507.IN. The Sheppard survey describes the stone as limestone. The descriptions match in every other way. In 2022, the MCSO tested the stone with acid and determined it was sandstone. Other References on File: Vincent J. Barr survey, Route Survey for North Maple Grove Road (2015), on file at the Recorder's Office as 2015016926.IN. Historic research has not yet been performed to prove the validity of this monument.

CERTIFICATION:



OFFICE OF THE MONROE COUNTY SURVEYOR • Trohn Enright-Randolph

119 W 7th Street, Bloomington, IN 47404 • 812-349-2570 • surveyoroffice@co.monroe.in.us

Page 2 of 2

MONUMENT RECORD
State of Indiana - County of Monroe

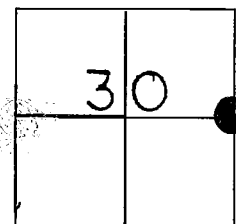
Section: 30 Township:10 N Range: 1 W

Corner ID: Wash E-19

Monument Description & Remarks: sandstone (.32 height x .85 length x .50 width) with "+" survey stake and pink flagging.

References On File: Reported as section corner by Mike Mundy and several references in old legal survey books.

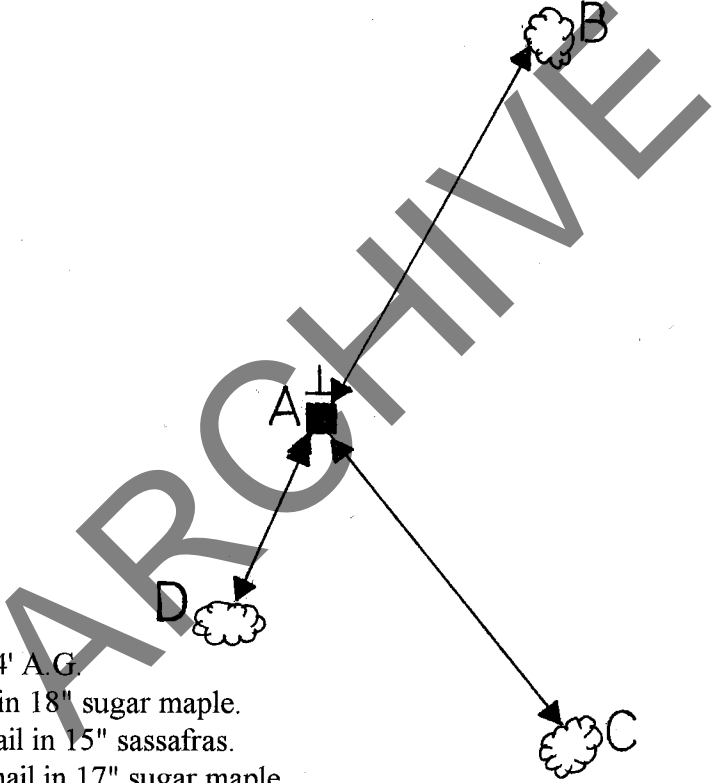
Field Book: 2000-01
Page No.: 30
USGS Quad: Modesto



Tie Sheet Drawing
(Not to Scale)



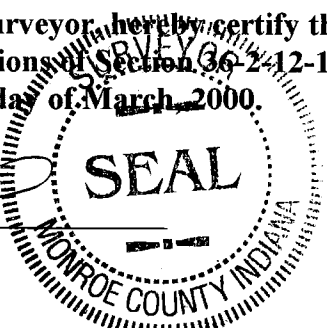
Magnetic North



- A-sandstone with "+" S.M. 4' A.G.
- B-N 75° E 37' to MAG nail in 18" sugar maple.
- C-S 49° E 30.68' to MAG nail in 15" sassafras.
- D-S 41° W 12.40' to MAG nail in 17" sugar maple.

I, Kevin P. Enright, Monroe County Surveyor, hereby certify that this document was prepared under my direction in accordance with the provisions of Section 36-2-12-11 of the Indiana Code, and the data is given under my hand this 17th day of March, 2000.

Kevin Enright



Certified and sealed by the Monroe County Surveyor Review Board

Date: 11/02/00

October 13, 2000

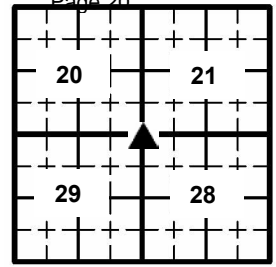
PENDING

MONUMENT RECORD

Corner ID: **Wash_I17**

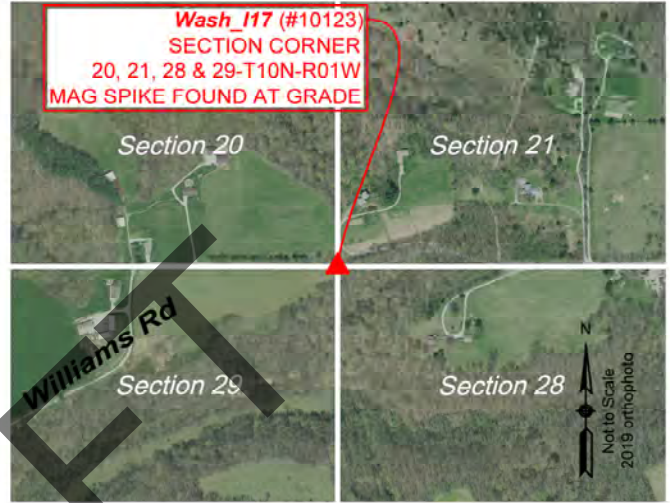
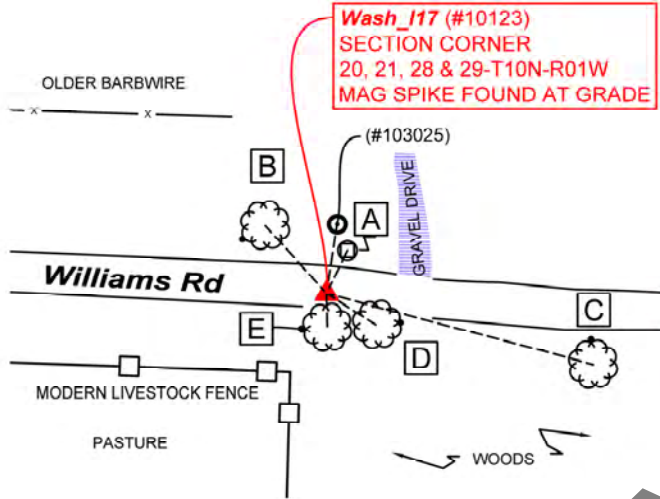
Section Corner

Sections 20, 21, 28 & 29- T10N-R01W, 2nd P.M.
Washington Township, Monroe County, Indiana



MONUMENT: Describe monument set or found (Include material type, scribing, distance above/below grade, dimensions.)
3" Mag Spike at grade 1.5' south of center of West Williams Rd.

MONUMENT LOCATION SKETCH:



WITNESS MONUMENT TIES

All ties to new Bearing Trees (BTs) are a mag nail set in a 1-1/2" plastic washer stamped "SURVEY MARKER - DO NOT REMOVE" and hack mark at the root crown (less than 12" above ground) perpendicular to the center of the tree, unless otherwise noted. BT diameters are noted as dbh and are measured approximately 4.5' above ground. Bearings are measured from the monument to the center of the BT, distances are measured from the monument to the mag nail.

ID	BEARING	DISTANCE	DESCRIPTION
Witness A	N 26d E	15.1'	Top center of a Cable Box 2.3' above grade
Witness B	N 42d W	29.0'	Mag nail found 0.6' above grade on the east side of a 24" Sugar Maple Tree as per 2009 monument record.
Witness C	S 75d E	87.2'	Mag nail signal found on the north side of a 32" Yellow Poplar Tree as per 2009 monument record.
Witness D	S 39d E	14.9'	Mag nail found 0.4' on the east side of a 22" Sugar Maple Tree as per 2009 monument record.
Witness E	S 32d E	12.3'	Mag nail found 0.4' above grade on the south side of 19" trifurcated Sugar Maple Tree. "Protect Nearby Survey Marker Sign" found 4' above grade as per 2009 monument record.

MONUMENT ACCESSORIES

Other survey grade monuments that were located in the vicinity and their relation to the monument.

(#103025)	N 8d37'4" E	22.37'	1 1/4 " pinched pipe found 0.4' above grade.
-----------	-------------	--------	----------------------------------------------



OFFICE OF THE MONROE COUNTY SURVEYOR • Trohn Enright-Randolph

119 W 7th Street, Bloomington, IN 47404 • 812-349-2570 • surveyoroffice@co.monroe.in.us

PENDING

MONUMENT RECORD

Corner ID: **Wash_I17**

Section Corner

Sections 20, 21, 28 & 29- T10N-R01W, 2nd P.M.
Washington Township, Monroe County, Indiana

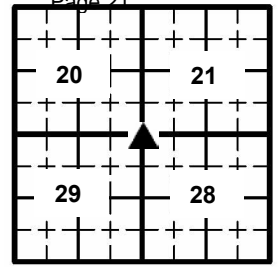


PHOTO IDENTIFIED: Photo Date: 04/21/2022



Photo Orientation & Description: Looking at Wash_I17 from above



Photo Orientation & Description: Looking north at Wash_I17



Photo Orientation & Description: Looking west at Wash_I17



Photo Orientation & Description: Looking east at Wash_I17

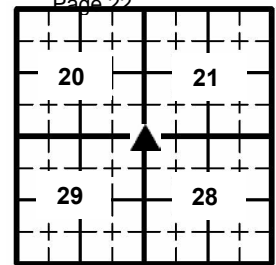
ORIGINAL OR SUBSEQUENT SURVEY EVIDENCE FOUND: Include, search area or areas, search procedure, etc.
 Date of Field work/Search: 04/20/2022 & 04/22/2022 By: JG & HJ Monument Found: Mag Spike BTs or Reference Objects Found: Found Witnesses B, C, D & E from February 27, 2009 Monument Record Project #: Washington Monuments Field Book: 54/54 Equipment: The basis of bearings is Grid North System NAD83(2011)/Indiana West NAVD 88, Epoch 2010.0000, geoid12b_conus.db3, US Survey Feet, derived from GPS observations utilizing the Indiana Real-Time Network (INCORS). Coordinate data was collected with a Javad Triumph LS Network Rover. Coordinates are available upon request. Distances to witness ties were collected with a Leica Disto laser distance meter and 100' measuring tape. Bearings to witness ties were collected with the internal magnetic compass of the Javad Triumph LS and were automatically adjusted to grid north and are approximately shown hereon for reference. Priority should be given to provided distances over bearings. Notes: All witness photos on file in the Monroe County Surveyors Office.



OFFICE OF THE MONROE COUNTY SURVEYOR • Trohn Enright-Randolph
 119 W 7th Street, Bloomington, IN 47404 • 812-349-2570 • surveyorsoffice@co.monroe.in.us

**MONUMENT RECORD**Corner ID: **Wash_I17****Section Corner**

Sections 20, 21, 28 & 29- T10N-R01W, 2nd P.M.
Washington Township, Monroe County, Indiana



OTHER EVIDENCE: Describe corner location relative to nearby features and how to reach the corner location – note fences, roads, timber cutting lines, mow lines, clearings, plantings, streams, topo changes, etc.

Monument is 1.5' south of the centerline of Williams Road, 12' west of a gravel drive on the north side and a half mile west with Williams Road's intersection with Simpson Chapel Road.

MONUMENT PRESERVATION: Describe work done to preserve existing monument.

Geodetic controls were captured for the monument along with a new witness (pinched iron pipe). A second new witness was established (Witness A). Stability of "Protect Nearby Survey Markers" sign was assured.

THEORY OF LOCATION: Describe the theory of location for acceptance of this monument. Include monument origin and associated uncertainty.

The Mag Spike was set by the Monroe County Surveyor, Kevin Enright, on February 27, 2009, and accepted by the Monroe County Surveyor Review Board on March 10, 2009. Mr. Enright set the 3" Mag Spike after finding a magnetic signal for 1/2" Rebar under the asphalt and verifying its position using Witness C, per his 2009 notes. Before that, the 1/2" rebar was witnessed by Monroe County Surveyor, Michael W. Friley, on October 8, 1993. Before that, the rebar was witnessed by Monroe County Surveyor, Edmund O. Farkas, on April 29, 1987. At the time, Mr. Farkas found the rebar bent and pulled from the ground. The Monroe County Surveyor straightened the rebar and reset it. Before that, the rebar was set by Monroe County Surveyor, Edmund O. Farkas, on April 14, 1982.

References on File: Tracy L. McGill survey, Location Control Route Survey Plat Proposed I-69 Section 5, Segment 4 Connaught Road to Morgan County Line (2013) on file at the Recorder's Office as 2013015455.IN and Michael E. Sheppard survey, Plat of Survey of the Lands of Raymond Saidah in the East half of Section 28 (2011) on file at the Recorder's Office as 2011014851.IN and finally a survey performed by Eric L. Deckard, Walls –Sliding Scale Subdivision Final Plat (2021), on file at the Recorder's Office as 2021000685.IN. Historic research has not yet been performed to prove the validity of this monument.

CERTIFICATION:

DRAFT



OFFICE OF THE MONROE COUNTY SURVEYOR • Trohn Enright-Randolph

119 W 7th Street, Bloomington, IN 47404 • 812-349-2570 • surveyoroffice@co.monroe.in.us

Page 3 of 3

MONUMENT RECORD
State of Indiana - County of Monroe

Section: 21

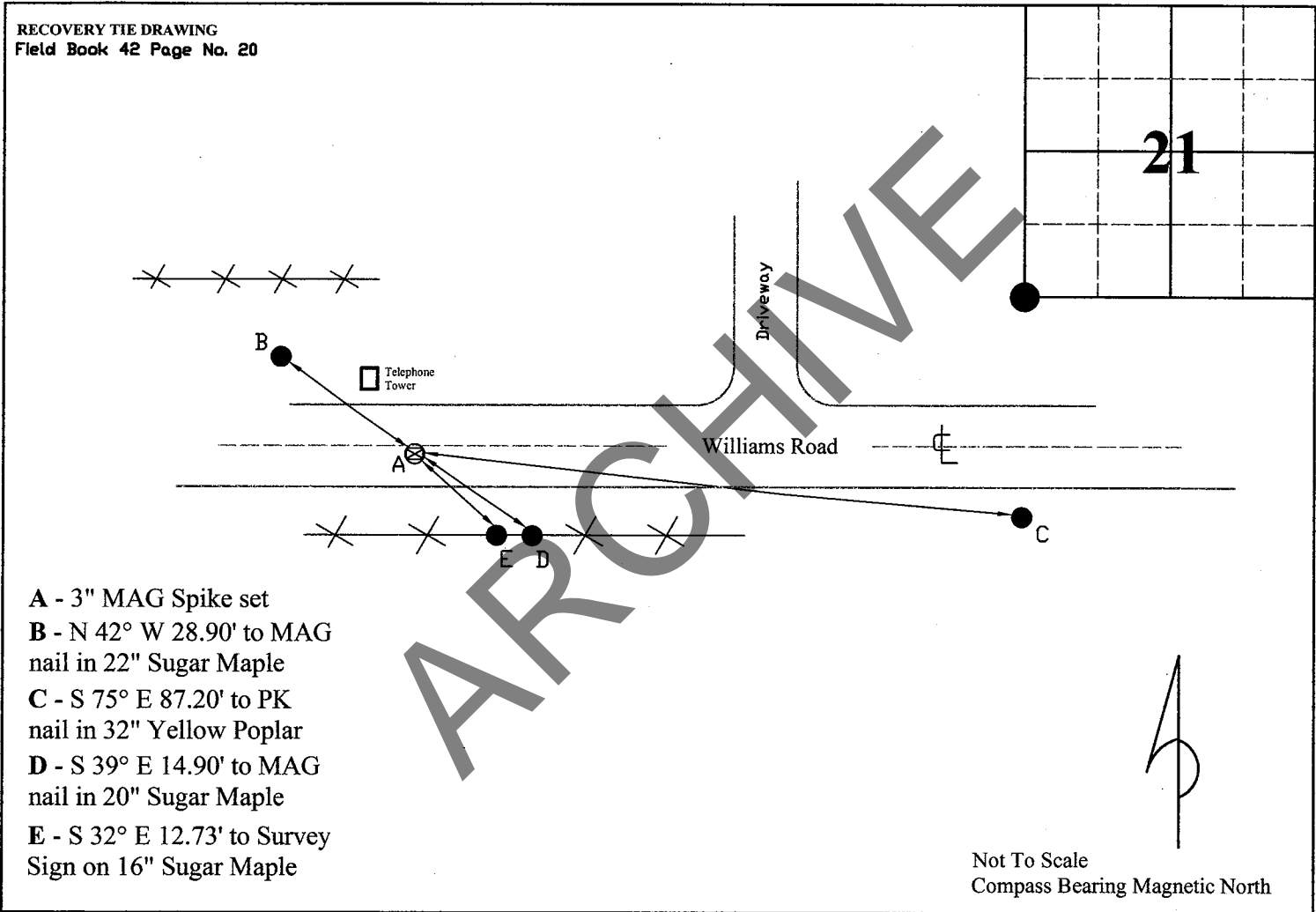
Township: 10 North

Range: 1 West

Corner ID: Wash I-17

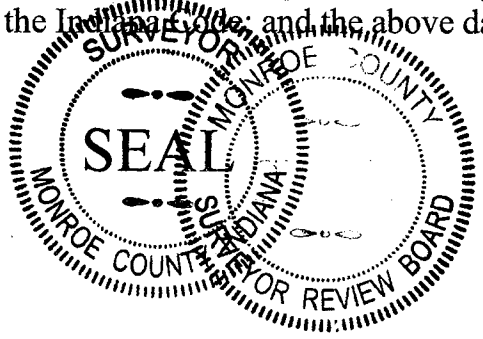
Monument Description & Remarks: 3" MAG Spike set over 1/2" Rebar buried under black asphalt. Survey Sign 4.5ft above ground at pt. E

References On File: Edmund O. Farkas recovery tie drawing, Monument Record (1987) and Michael W. Friley recovery tie drawing, Monument Record (1993) on file in Surveyor Office



I, Kevin P. Enright, Monroe County Surveyor, hereby certify that this document was prepared under my direction in accordance with the provisions of section 36-2-12-11 of the Indiana Code; and the above data is given under my hand and seal this 27th day of February, 2009.

Kevin P. Enright



Administered by the Monroe County Surveyor Review Board

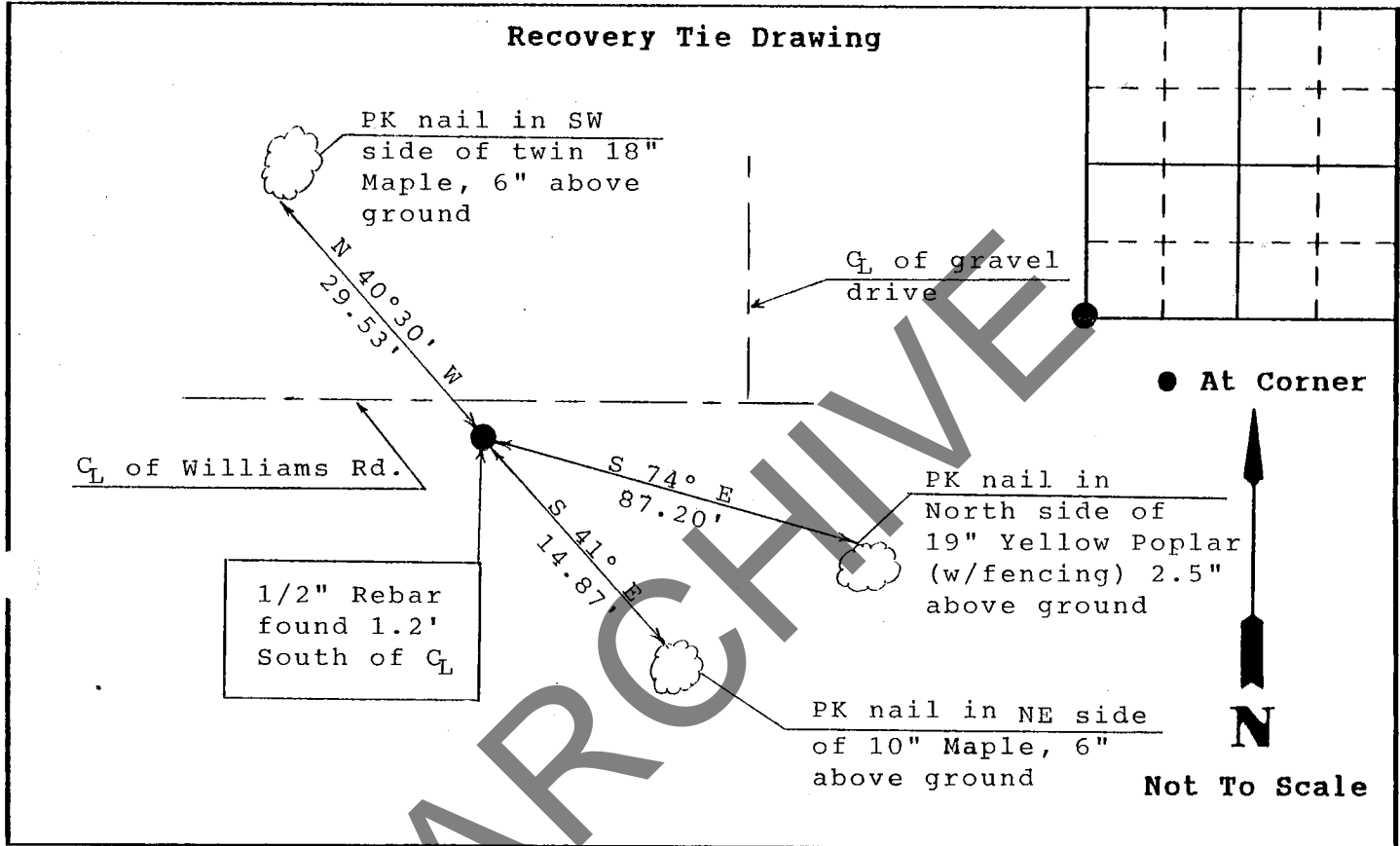
Date: 3-10-2009

MONUMENT RECORD

STATE OF INDIANA - COUNTY OF MONROE

Section Twenty-one, 21, Township 10 North, Range 1 West

Monument Description & Remarks: Found 1/2" Rebar at SW Corner of Section,
with flagging, 5" under surface, 1.2' South of centerline of Williams Rd.



State of Indiana
County of Monroe

Space Reserved For
Recording
Officer

I, Michael W. Friley, hereby certify that this document was prepared under my direction in accordance with the provisions of Section 17-3-64-4 through 17-3-64-8 of the Indiana Code, being Acts of 1965, Chapter 319; and the above data is given under my hand and seal this 8th day of October, 19 93 A.D.

Indiana Registered Land Surveyor No. _____ or

Monroe County Surveyor's Office

United States Government Agency

Monroe County Surveyor

Title

Field Book:
93-01
Page:
16

MONUMENT RECORD

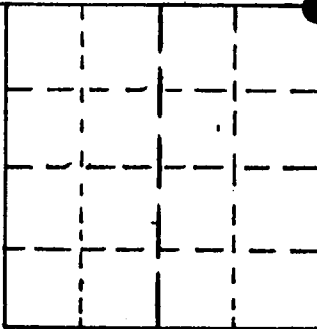
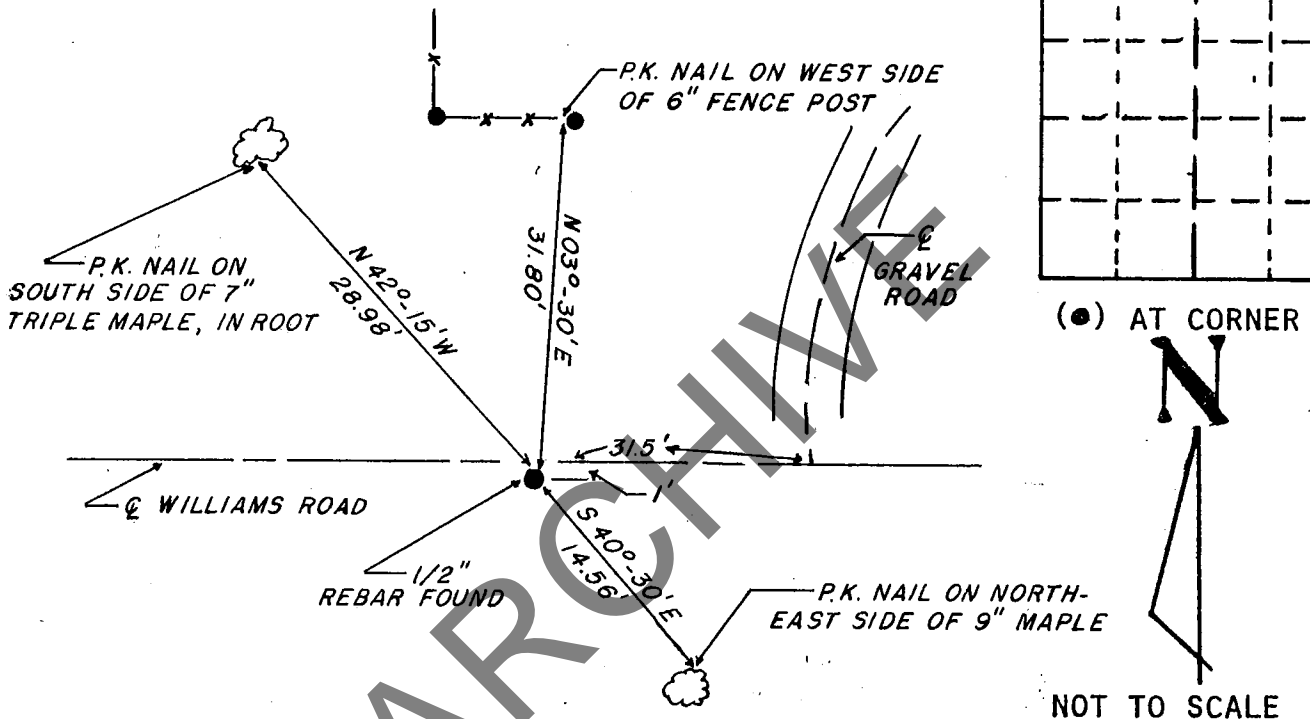
STATE OF INDIANA - COUNTY OF MONROE

SECTION 29, TOWNSHIP 10 NORTH, RANGE 1 WEST

MONUMENT DESCRIPTION & REMARKS

NEW CORNER TIES ESTABLISHED 4/29/87 . . . FOUND 1/2" REBAR
1' SOUTH OF THE CENTERLINE OF WILLIAMS ROAD. REBAR WAS
BENT - PULLED OUT OF GROUND, STRAIGHTENED, AND PUT BACK IN.

RECOVERY TIE DRAWING



(●) AT CORNER



NOT TO SCALE

STATE OF INDIANA

COUNTY OF MONROE

I, EDMUND O. FARKAS HEREBY CERTIFY THAT THIS DOCUMENT WAS PREPARED UNDER MY DIRECTION IN ACCORDANCE WITH THE PROVISIONS OF SECTION 17-3-64-4 - 17-3-64-8 OF THE INDIANA CODE, BEING ACTS OF 1965, CHAPTER 319; AND THE ABOVE DATA IS GIVEN UNDER MY HAND AND SEAL THIS 29TH DAY OF APRIL, 19 87 A.D.

SPACE RESERVED FOR RECORDING OFFICER.

INDIANA REGISTERED LAND SURVEYOR NO. _____

OR _____

UNITED STATES GOVERNMENT AGENCY

TOWNSHIP;
WASHINGTON

CORNER I.D.

TITLE

I - 17

MONUMENT RECORD

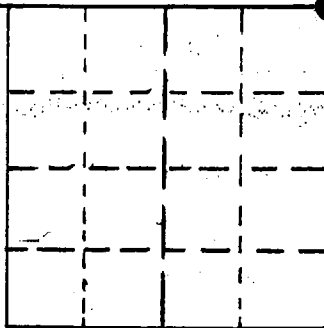
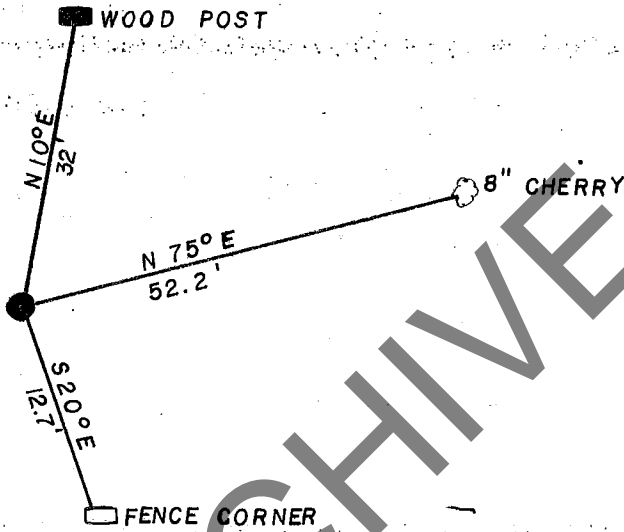
STATE OF INDIANA - COUNTY OF MONROE

SECTION 29, TOWNSHIP 10 North, RANGE 1 West

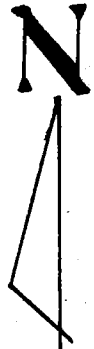
MONUMENT DESCRIPTION & REMARKS

Rebar Set.

RECOVERY TIE DRAWING



(●) AT CORNER



NOT TO SCALE

STATE OF INDIANA

COUNTY OF Monroe

I, Edmund O. Farkas HEREBY CERTIFY THAT THIS DOCUMENT WAS PREPARED UNDER MY DIRECTION IN ACCORDANCE WITH THE PROVISIONS OF SECTION 17-3-64-4 - 17-3-64-8 OF THE INDIANA CODE, BEING ACTS OF 1965, CHAPTER 319; AND THE ABOVE DATA IS GIVEN UNDER MY HAND AND SEAL THIS 14 DAY OF April, 19 82 A.D.

SPACE RESERVED FOR RECORDING OFFICER.

INDIANA REGISTERED LAND SURVEYOR NO. S0114

OR

UNITED STATES GOVERNMENT AGENCY

TOWNSHIP: Washington

CORNER I.D.

TITLE

PENDING

MONUMENT RECORD

Corner ID: **Wash_M15**

Quarter Corner

Sections 21 & 22- T10N-R01W, 2nd P.M.
Washington Township, Monroe County, Indiana

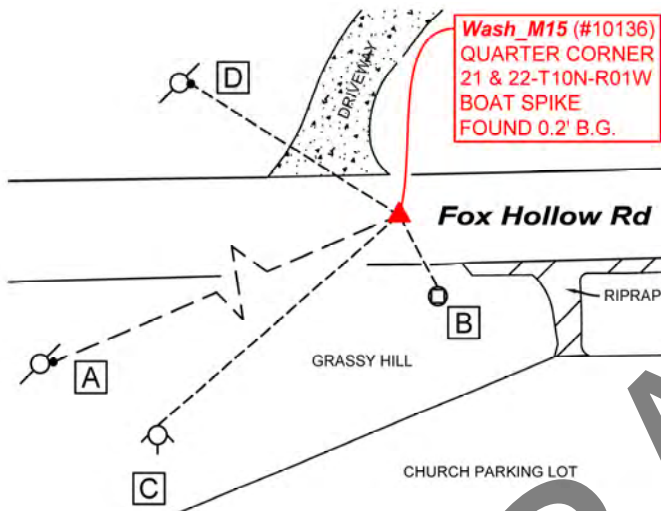
Section 21 T10N-R01W Washington	Section 22 T10N-R01W Washington
---------------------------------------	---------------------------------------

MONUMENT: Describe monument set or found (Include material type, scribing, distance above/below grade, dimensions.)

Found Boat Spike 0.2' below grade approximately 1' north of centerline of Fox Hollow Road.



MONUMENT LOCATION SKETCH:



DRAFT

WITNESS MONUMENT TIES			
<p><i>All ties to new Bearing Trees (BTs) are a mag nail set in a 1-1/2" plastic washer stamped "SURVEY MARKER - DO NOT REMOVE" and hack mark at the root crown (less than 12" above ground) perpendicular to the center of the tree, unless otherwise noted. BT diameters are noted as dbh and are measured approximately 4.5' above ground. Bearings are measured from the monument to the center of the BT, distances are measured from the monument to the mag nail.</i></p>			
ID	BEARING	DISTANCE	DESCRIPTION
Witness A	S 67d W	183.0'	Mag nail and washer set 0.5' above grade on the east side of a 13" Power Line Pole.
Witness B	S 14d E	17.5'	Found 35 M.P.H. sign post measured to center point 5' above grade as per 2004 monument record.
Witness C	S 44d W	70.1'	Found Fire Hydrant measured to a point on center peak north side as per 2004 monument record.
Witness D	N 59d W	56.0'	Mag nail and washer set 0.5' above grade on the east side of a 13" Power Line Pole.



OFFICE OF THE MONROE COUNTY SURVEYOR • Trohn Enright-Randolph

119 W 7th Street, Bloomington, IN 47404 • 812-349-2570 • surveyoroffice@co.monroe.in.us

PENDING

MONUMENT RECORD

Corner ID: **Wash_M15**

Quarter Corner

Sections 21 & 22- T10N-R01W, 2nd P.M.
Washington Township, Monroe County, Indiana

	Section 21	Section 22	
T10N-R01W	▲	T10N-R01W	
Washington		Washington	

PHOTO IDENTIFIED: Photo Date: 06/29/2022



Photo Orientation & Description: Wash_M15 from above



Photo Orientation & Description: Looking west at Wash_M15

ORIGINAL OR SUBSEQUENT SURVEY EVIDENCE FOUND: Include, search area or areas, search procedure, etc.

Date of Field work/Search: 06/29/2022 By: JG & HJ Monument Found: Boat Spike BTs or Reference Objects Found: Found Witnesses B & C from 2004 monument record. New power line poles were placed in representation of Witness D Project #: Washington Monuments Field Book: 54/68 Equipment: The basis of bearings is Grid North System NAD83(2011)/Indiana West NAVD 88, Epoch 2010.0000, geoid12b_conus.db3, US Survey Feet, derived from GPS observations utilizing the Indiana Real-Time Network (INCORS). Coordinate data was collected with a Javad Triumph LS Network Rover. Coordinates are available upon request. Distances to witness ties were collected with a Leica Disto laser distance meter and a 100' measuring tape. Bearings to witness ties were collected with the internal magnetic compass of the Javad Triumph LS and were automatically adjusted to grid north and are approximately shown hereon for reference. Priority should be given to provided distances over bearings. Notes: All witness photos on file in the Monroe County Surveyors Office.

OTHER EVIDENCE: Describe corner location relative to nearby features and how to reach the corner location – note fences, roads, timber cutting lines, mow lines, clearings, plantings, streams, topo changes, etc.

Wash_M15 was found approximately 1' north of the centerline of Fox Hollow Road. Its excavation site can be spotted from the eastern entry for residential drive of 8480 N Fox Hollow Road. On the south side of the street sits the United Pentecostal Assembly Family Life Worship Center.

MONUMENT PRESERVATION: Describe work done to preserve existing monument.

Geodetic controls were captured for the monument. Two new witnesses were established.

THEORY OF LOCATION: Describe the theory of location for acceptance of this monument. Include monument origin and associated uncertainty.

The boat spike was previously witnessed by the Monroe County Surveyor, Steven V. Farkas, on December 27, 2004 using work conducted by Licensed Surveyor, Ben E. Bledsoe (LSS0559). Prior to that, the boat spike was set by Monroe County Surveyor, Michael Friley, on October 8, 1993 in order to replace a nail in bottle cap. At the time Bledsoe Tapp Co. verified that the nail in bottle cap was the monument held for this corner. References of File: Ben E. Bledsoe survey referencing nail in bottle cap, Boundary Survey for Yocum (1992), on file at the Recorder's Office as 00304246. Tracy L. McGill Survey, Location Control Route Survey Plat Proposed I-69 Section 5, Segment 4 Connaught Road to Morgan County Line (2013), on file at the Recorder's Office as 2013015455.IN. Christopher L. Porter survey, Retracement Boundary for April Ayers (2019), on file at the Recorder's Office as 2021022117.IN. Historic research has not yet been performed to prove the validity of this monument.



OFFICE OF THE MONROE COUNTY SURVEYOR • Trohn Enright-Randolph

119 W 7th Street, Bloomington, IN 47404 • 812-349-2570 • surveyoroffice@co.monroe.in.us

Page 2 of 3

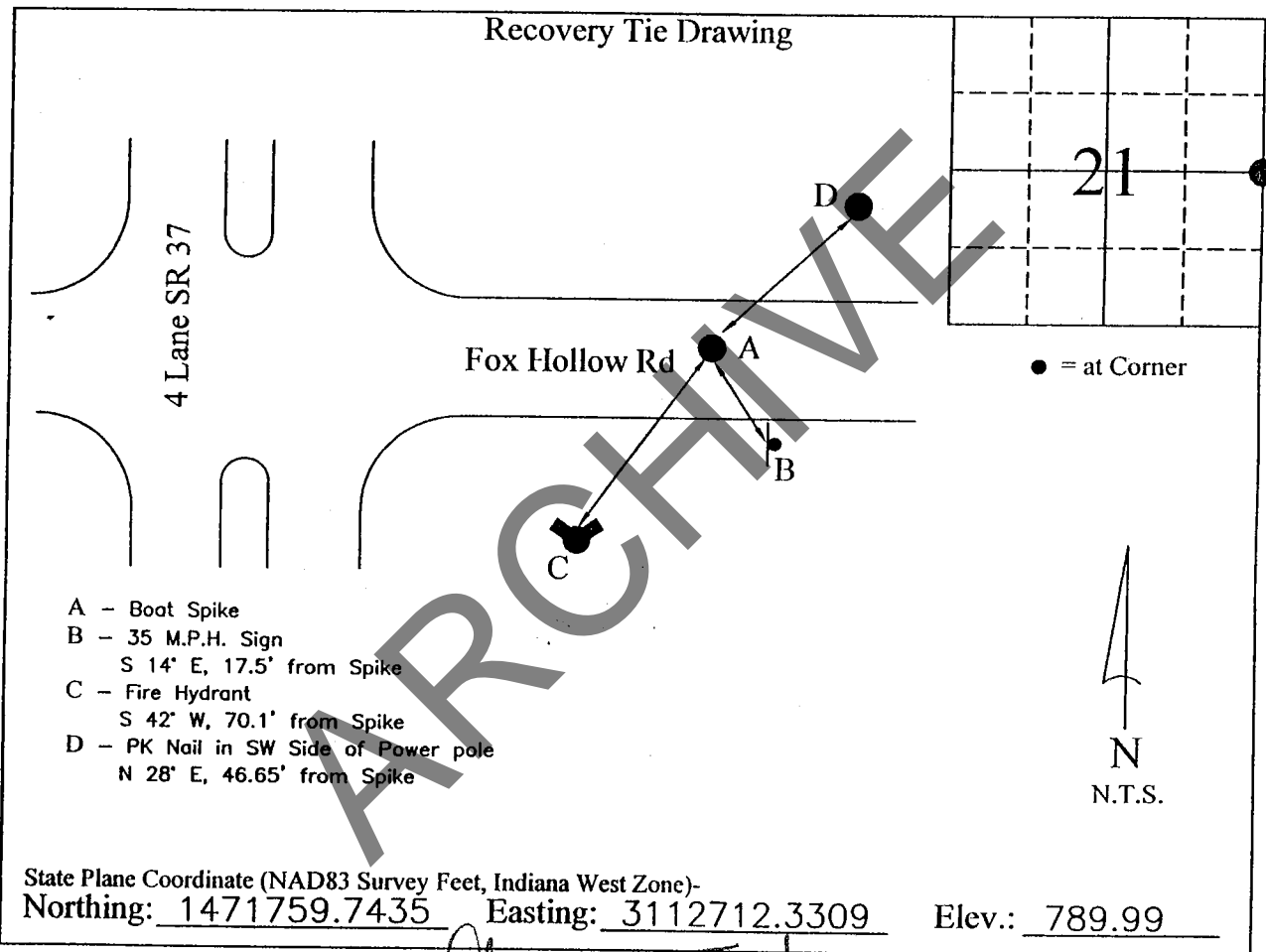
Corner I.D. # M-15

MONUMENT RECORD

STATE OF INDIANA ~ COUNTY OF MONROE

Section 21, Township 10 North, Range 1 West,

Monument Description & Remarks: Boat Spike Flush

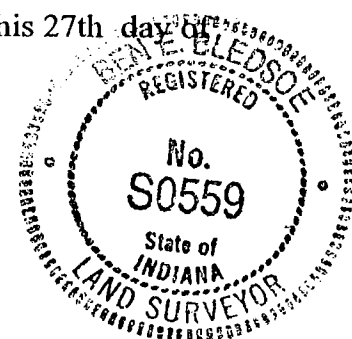


COMPLETED By *Ben E. Bledsoe*

I, Ben E. Bledsoe, Registered Land Surveyor, here by certify that this document was prepared under my direction in accordance with the provisions of Section 17-3-64-4 through 17-3-64-8 of the Indiana Code, being Acts of 1965, Chapter 319; this 27th day of December, 2004 A.D.

Ben E. Bledsoe

Indiana Registered Land Surveyor No. S0559



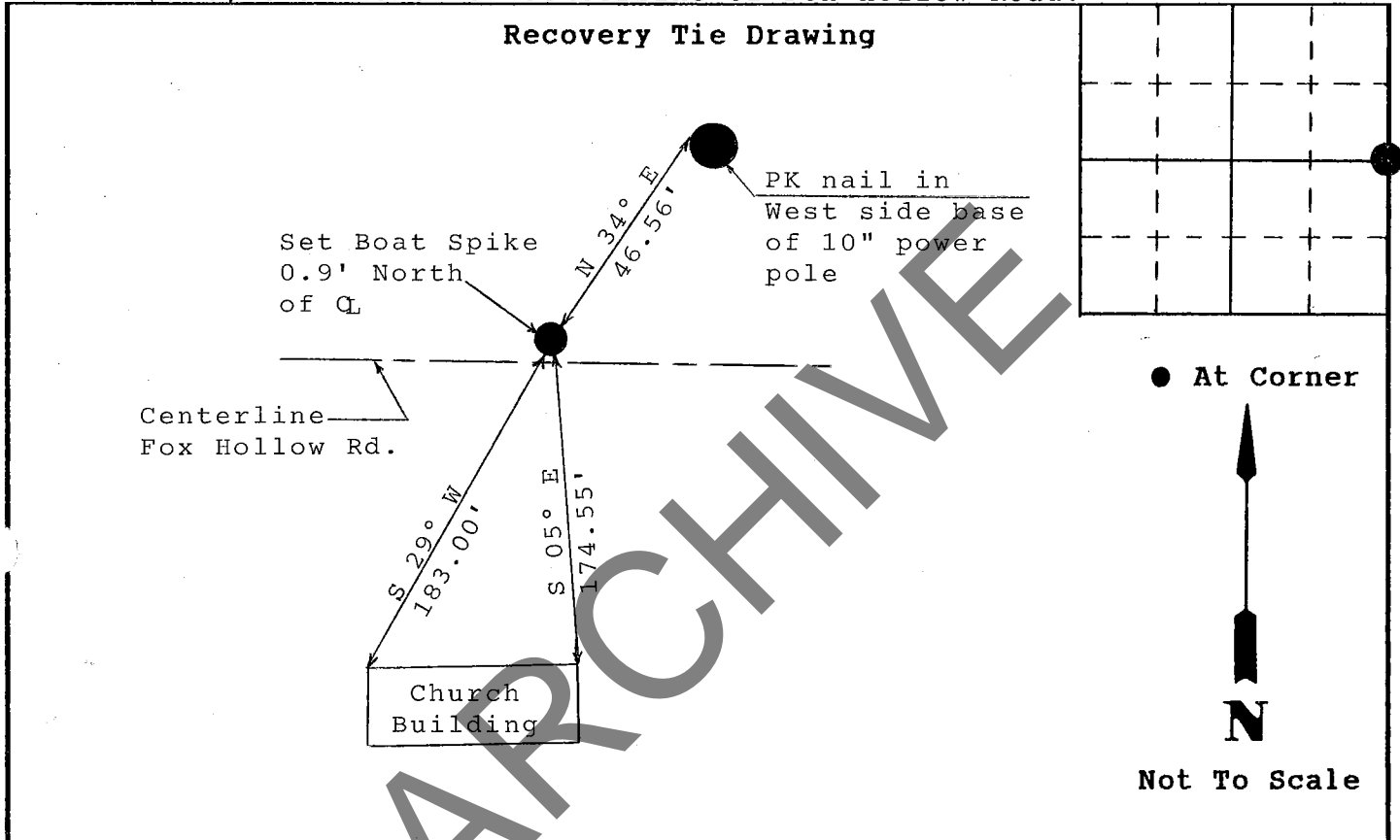
M-15

MONUMENT RECORD

STATE OF INDIANA - COUNTY OF MONROE

Section Twenty-one, 21, Township 10 North, Range 1 West

Monument Description & Remarks: East 1/4 Corner of Section - Found nail in bottle cap, verified by Bledsoe Tapp Co. to be corner. Replaced with Boat Spike, 0.9' North of centerline of Fox Hollow Road.



State of Indiana
County of Monroe

Space Reserved For Recording Officer

I, Michael W. Friley, hereby certify that this document was prepared under my direction in accordance with the provisions of Section 17-3-64-4 through 17-3-64-8 of the Indiana Code, being Acts of 1965, Chapter 319; and the above data is given under my hand and seal this 8th day of October, 1993 A.D.

Indiana Registered Land Surveyor No. _____ or

Monroe County Surveyor's Office
United States Government Agency

Monroe County Surveyor
Title _____

Field Book:
93-01
Page:
14

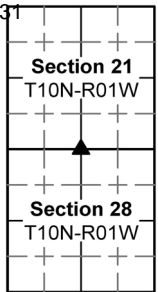
PENDING

MONUMENT RECORD

Corner ID: **Wash_K17**

Quarter Corner

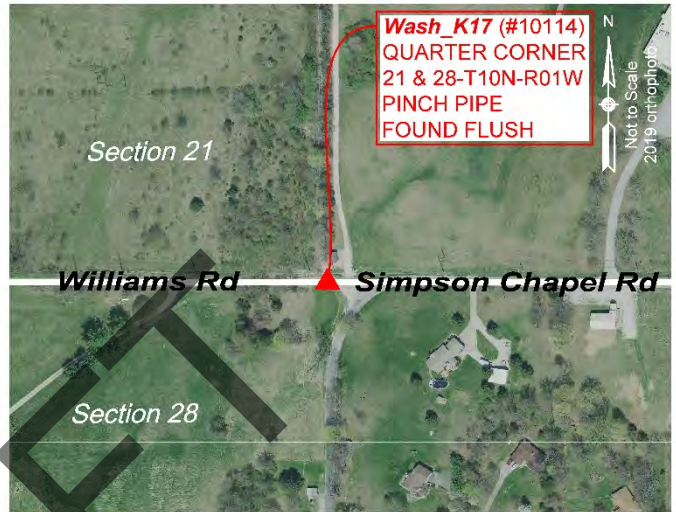
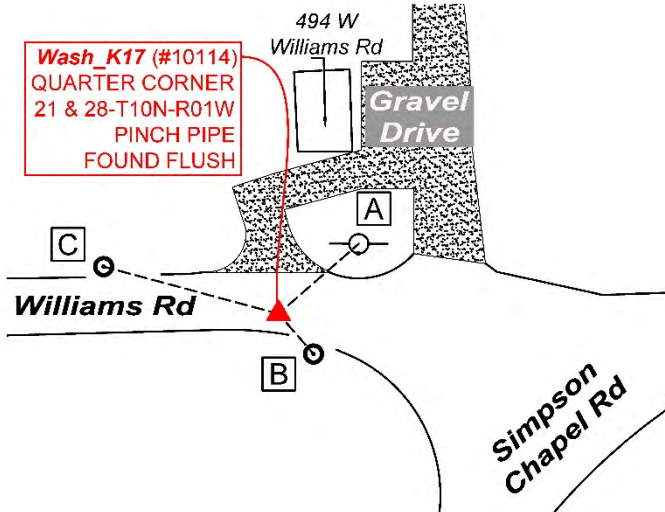
Sections 21 & 28- T10N-R01W, 2nd P.M.
Washington Township, Monroe County, Indiana



MONUMENT: Describe monument set or found (Include material type, scribing, distance above/below grade, dimensions.)

1" Pinch pipe found flush in asphalt south of centerline in W Williams Road.

MONUMENT LOCATION SKETCH:



WITNESS MONUMENT TIES			
ID	BEARING	DISTANCE	DESCRIPTION
Witness A	N 49d E	27.7'	A mag nail found 0.9' above grade on the south side of a 13" power pole. A "Protect Nearby Survey Marker" sign was set 4.7' above grade on the south side of the pole.
Witness B	S 41d E	13.9'	Stop sign facing west with steel post at Williams Road and Simpson Road.
Witness C	N 75d W	47.2'	Steel post with speed limit sign facing east.

PHOTO IDENTIFIED: Photo Date: 08/06/2020



Photo Orientation & Description: Looking east at Wash_K17



Photo Orientation & Description: Looking south at Wash_K17



OFFICE OF THE MONROE COUNTY SURVEYOR • Trohn Enright-Randolph
119 W 7th Street, Bloomington, IN 47404 • 812-349-2570 • surveyoroffice@co.monroe.in.us



MONUMENT RECORD

Corner ID: **Wash_K17**

Quarter Corner

Sections 21 & 28- T10N-R01W, 2nd P.M.
Washington Township, Monroe County, Indiana

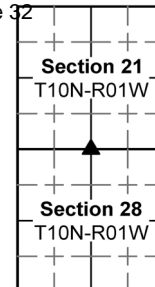


Photo Orientation & Description: Looking west at Wash_K17



Photo Orientation & Description: Looking north at Wash_K17

ORIGINAL OR SUBSEQUENT SURVEY EVIDENCE FOUND: *Include, search area or areas, search procedure, etc.*
 Date of Field work/Search: 08/06/2020 & 3/29/2023 By: CAR & TER & HJ & JG Monument Found: Pinch Pipe BTs or Reference Objects
 Found: Mag nail found per 2012 Monroe County Surveyor tie sheet Project #: Section Corners 2020 Field Book: 54/9 Equipment:
 The basis of bearings is Grid North System NAD83(2011)/Indiana West NAVD 88, Epoch 2010.0000, geoid12b_conus.db3, US
 Survey Feet, derived from GPS observations utilizing the Indiana Real-Time Network (INCORS). Coordinate data was collected with
 a Javad Triumph LS Network Rover. Coordinates are available upon request. Distances to witness ties were collected with a 100'
 measuring tape. Bearings to witness ties were collected with the internal magnetic compass of the Javad Triumph LS and were
 automatically adjusted to grid north and are approximately shown hereon for reference. Priority should be given to provided
 distances over bearings. Notes: We measured with tape using distances from the old witness ties found per the 2012 tie sheet, and
 found that this pipe matched the measurements from the old 2012 tie sheet.

OTHER EVIDENCE: *Describe corner location relative to nearby features and how to reach the corner location – note fences, roads, timber cutting
 lines, mow lines, clearings, plantings, streams, topo changes, etc.*
 The monument is south of the centerline and 5.3' north of the edge of asphalt to the south of W Williams Road.

MONUMENT PRESERVATION: *Describe work done to preserve existing monument.*
 Collected new coordinates, updated bearings/distances on the mag nail found and took new witnesses. Spray painted the
 monument orange. A "Protect Nearby Survey Marker" sign was set on the power pole referenced with witness A.

THEORY OF LOCATION: *Describe the theory of location for acceptance of this monument. Include monument origin and associated uncertainty.*
 References on File: A Marty J. James survey, Service Facility-Lee Paul Road (2017), on file at the Recorder's Office as
 2017010999.IN and an Eric L. Deckard survey, Walls- Sliding Scale Subdivision Final Plat (2021), on file at the Recorder's Office as
 2021000685.IN. Historic research has not yet been performed to prove the validity of this monument.

CERTIFICATIONS:



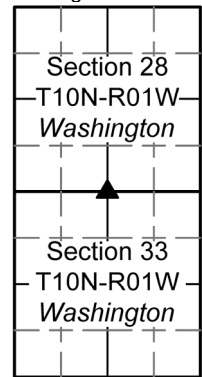
PENDING

MONUMENT RECORD

Corner ID: **Wash_K21**

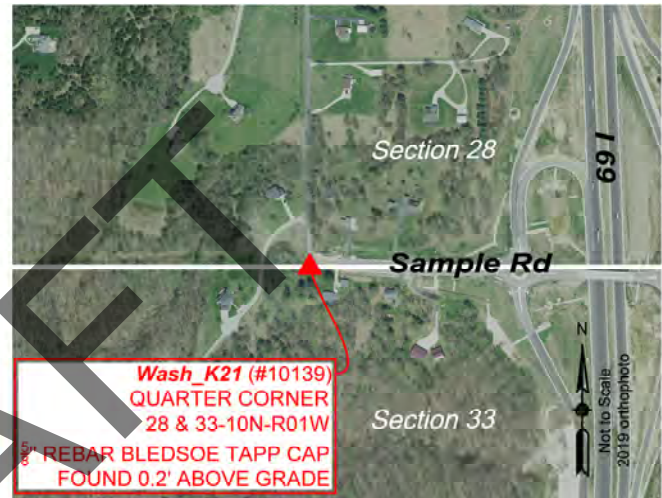
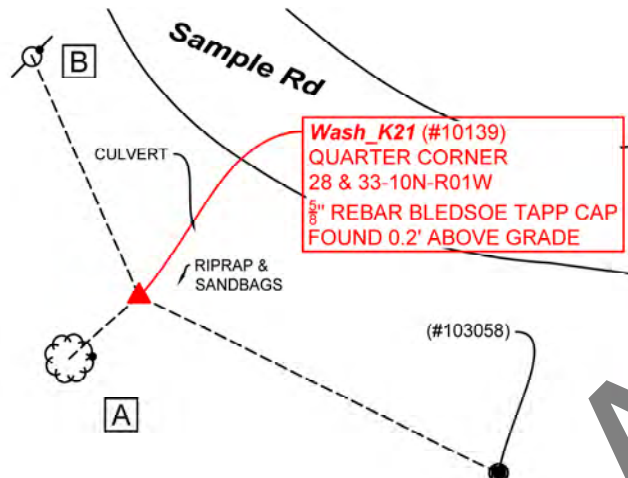
Quarter Corner

Sections 28 & 33- T10N-R01W, 2nd P.M.
Washington Township, Monroe County, Indiana



MONUMENT: Describe monument set or found (Include material type, scribing, distance above/below grade, dimensions.)
5/8" Rebar with yellow plastic cap stamped "Bledsoe Tapp PC 50920004" 0.2' above grade approximately 40' southwest of the north-west elbow of West Sample Road.

MONUMENT LOCATION SKETCH:



WITNESS MONUMENT TIES

All ties to new Bearing Trees (BTs) are a mag nail set in a 1-1/2" plastic washer stamped "SURVEY MARKER - DO NOT REMOVE" and hack mark at the root crown (less than 12" above ground) perpendicular to the center of the tree, unless otherwise noted. BT diameters are noted as dbh and are measured approximately 4.5' above ground. Bearings are measured from the monument to the center of the BT, distances are measured from the monument to the mag nail.

ID	BEARING	DISTANCE	DESCRIPTION
Witness A	S 48d W	15.0'	Mag nail and washer set in hack 0.7' above grade on the east side of a 4" White Ash Tree.
Witness B	N 24d W	42.2'	Mag nail and washer set 0.2' above grade on the northeast side of an 11" power line pole.

MONUMENT ACCESSORIES

Other survey grade monuments that were located in the vicinity and their relation to the monument.

(#103058)	S 63d35'0" E	64.08'	Point collected at center top of 4" water pipeline, blue and white PVC reading, "Warning Water Pipeline Call Before You Dig 811" 4.2' above grade.
-----------	--------------	--------	----------------------------------------------------------------------------------------------------------------------------------------------------



OFFICE OF THE MONROE COUNTY SURVEYOR • Trohn Enright-Randolph

119 W 7th Street, Bloomington, IN 47404 • 812-349-2570 • surveyoroffice@co.monroe.in.us

PENDING

MONUMENT RECORD

Corner ID: **Wash_K21**

Quarter Corner

Sections 28 & 33- T10N-R01W, 2nd P.M.
Washington Township, Monroe County, Indiana

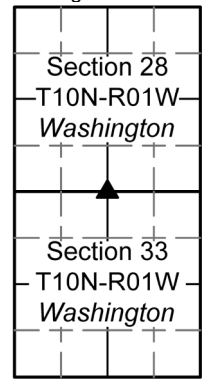


PHOTO IDENTIFIED: Photo Date: 8/26/2022



Photo Orientation & Description: Wash_K21 from above



Photo Orientation & Description: Looking southwest at Wash_K21 from Sample Road

ORIGINAL OR SUBSEQUENT SURVEY EVIDENCE FOUND: *Include, search area or areas, search procedure, etc.*
 Date of Field work/Search: 08/26/2022 & 3/29/2023 By: JG & HJ Monument Found: Rebar with Bledsoe Tapp cap BTs or Reference
 Objects Found: None of the witnesses exist from the 2004 Monument Record. Witness B 2004: the powerline pole was new as many of the powerline poles along Sample Road were replaced. Witness C 2004: Major work on Sample Road has been performed in 2022 and 2023. All arrow signs and their anchors are gone. Witness D 2004: Work has been done in drainage area. Project #: Washington Monuments Field Book: 55/03 & 55/30 Equipment: The basis of bearings is Grid North System NAD83(2011)/Indiana West NAVD 88, Epoch 2010.0000, geoid12b_conus.db3, US Survey Feet, derived from GPS observations utilizing the Indiana Real-Time Network (INCORS). Coordinate data was collected with a Javad Triumph LS Network Rover. Coordinates are available upon request. Distances to witness ties were collected with 100' measuring tape. Bearings to witness ties were collected with the internal magnetic compass of the Javad Triumph LS and were automatically adjusted to grid north and are approximately shown hereon for reference. Priority should be given to provided distances over bearings. Notes: All witness photos on file in the Monroe County Surveyors Office.

OTHER EVIDENCE: *Describe corner location relative to nearby features and how to reach the corner location – note fences, roads, timber cutting lines, mow lines, clearings, plantings, streams, topo changes, etc.*
 Wash_K21 is in a drainage area off West Sample Road. The ground is soft, and there are some gravel and landscaping efforts to disperse whatever stormwater issues may exist at this site. The site is south of Canyon Court, and one may park in the brush along the west side of Sample Road.

MONUMENT PRESERVATION: *Describe work done to preserve existing monument.*



OFFICE OF THE MONROE COUNTY SURVEYOR • Trohn Enright-Randolph
 119 W 7th Street, Bloomington, IN 47404 • 812-349-2570 • surveyorsoffice@co.monroe.in.us

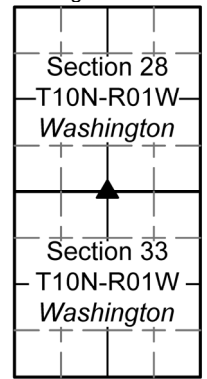


MONUMENT RECORD

Corner ID: **Wash_K21**

Quarter Corner

Sections 28 & 33- T10N-R01W, 2nd P.M.
Washington Township, Monroe County, Indiana



“Protect Nearby Survey Markers” sign was wobbly due to the softness of the ground. MCSO secured the sign at 2.8’ above grade and set new witnesses. Geodetic controls were taken for the monument and witness (#103058).

THEORY OF LOCATION: *Describe the theory of location for acceptance of this monument. Include monument origin and associated uncertainty.*
The rebar was previously witnessed by the Monroe County Surveyor, Steven V. Farkas, on December 27, 2004, using the work of licensed surveyor Ben E. Bledsoe (LS #0559). References on File: Tracy L. McGill survey, Location Control Route Survey Plat Proposed I-69 Section 5 Segment 4 (2013), on file at the Recorder’s Office as 2013015455.IN, a survey by Daniel J. Isaacs, Plan and Profile Sample Road (2021), on file at the Surveyor’s Office as RSID004806 and a survey by Eric L. Deckard, Castillo Boundary Survey (2021), on file at the Recorder’s Office as 2021014998.IN. Historic research has not yet been performed to prove the validity of this monument.

CERTIFICATION:

DRAFT



OFFICE OF THE MONROE COUNTY SURVEYOR • Trohn Enright-Randolph

119 W 7th Street, Bloomington, IN 47404 • 812-349-2570 • surveyorsoffice@co.monroe.in.us

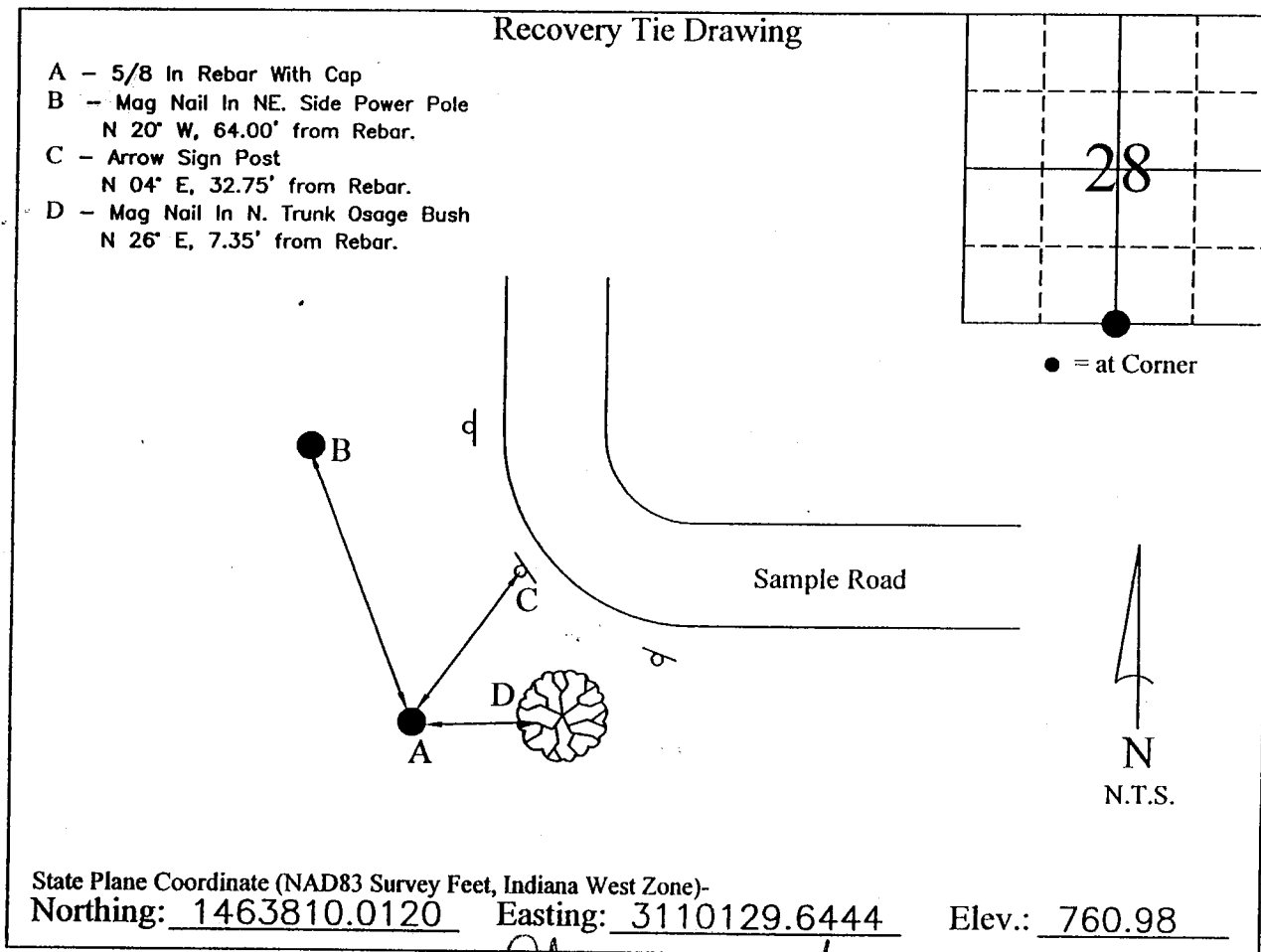
Corner I.D. # K-21

MONUMENT RECORD

STATE OF INDIANA ~ COUNTY OF MONROE

Section 28, Township 10 North, Range 1 West,

Monument Description & Remarks: 5/8" Rebar With Plastic Cap Inscribed "Bledsoe Tapp PC 50920004"



COMPLETED By *Steve U. Faulstich*

I, Ben E. Bledsoe, Registered Land Surveyor, here by certify that this document was prepared under my direction in accordance with the provisions of Section 17-3-64-4 through 17-3-64-8 of the Indiana Code, being Acts of 1965, Chapter 319; this 27th day of December, 2004 A.D.

Ben E. Bledsoe

Indiana Registered Land Surveyor No. S0559



MONUMENT RECORD

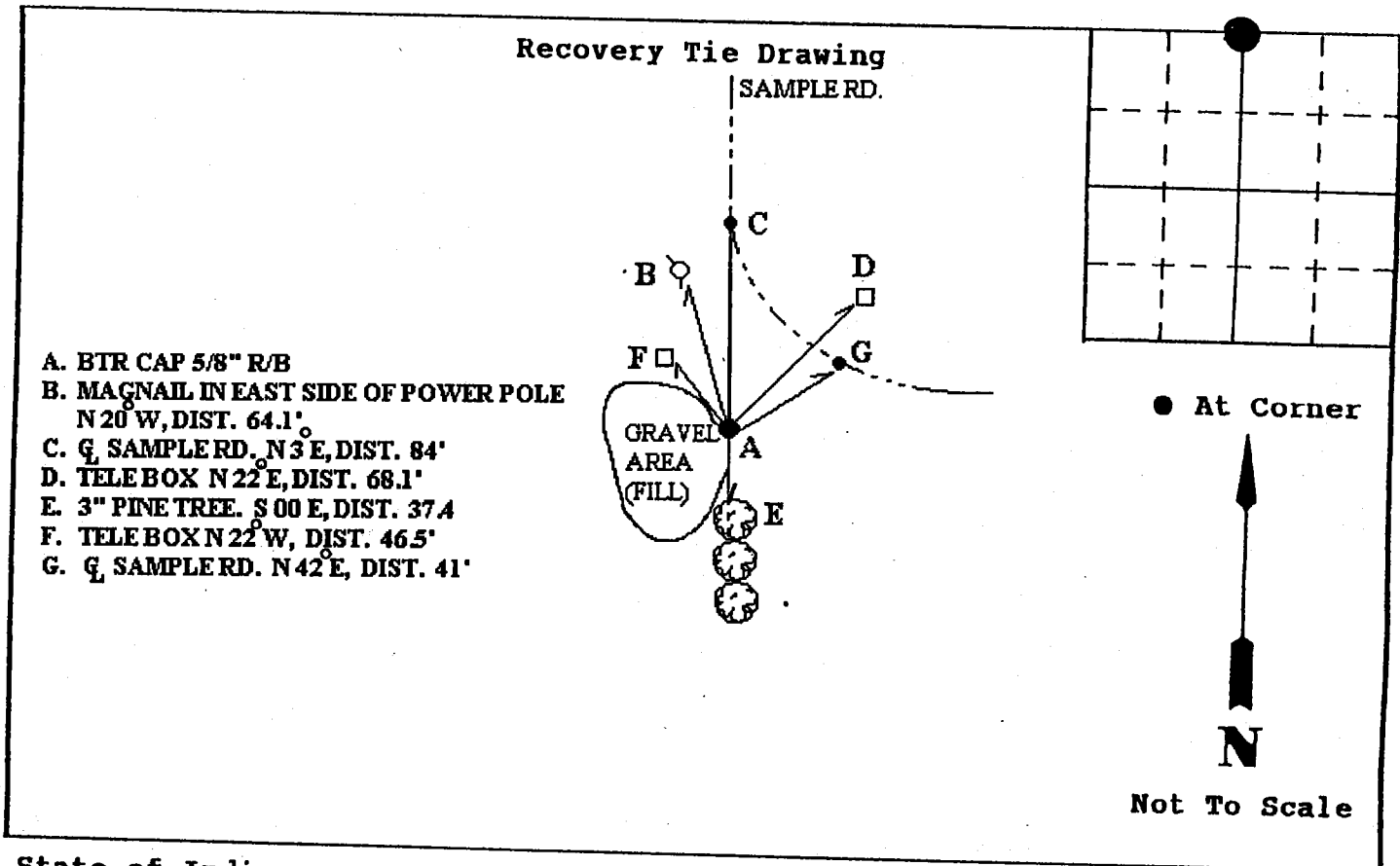
Corner I.D. #

WASH - K - 21

STATE OF INDIANA - COUNTY OF MONROE

Section 33, Township 10 NORTH, Range 1 WEST

Monument Description & Remarks: BTR CAP 5/8" R/B MARKS the NORTH EAST CORNER of the NORTH EAST 1/4 of the NORTH WEST 1/4.



State of Indiana
County of MONROE

Space Reserved For Recording Officer

I, Steven V. Farkas (STEVEN V. FARKAS), hereby certify that this document was prepared under my direction in accordance with the provisions of Section 17-3-64-4 through 17-3-64-8 of the Indiana Code, being Acts of 1965, Chapter 319; and the above data is given under my hand and seal this 19th day of MARCH, 2001 A.D.

Indiana Registered Land Surveyor No. _____ or

United States Government Agency
MONROE COUNTY SURVEYOR
Title _____

Field Book:

Page:
