



AGENDA
SURVEYOR REVIEW BOARD
HYBRID MEETING
Via Zoom App
Tuesday, May 16, 2023

- I. Call to Order**
- II. Approval of agenda**
- III. Approval of minutes from April 18, 2023**
- IV. New Business**
 - a. Office Update**
 - i. Relocation**
 - ii. Expansion of GIS Team**
 - b. Discussion about Walk-In Customer's Survey Question**
- V. Certification of corners:**
 - a. County Surveyor Perpetuation:**
 - i. Tabled Corners: Wash_K17* & Wash_K21**
 - ii. New Corners:**
 - b. Corner Documentation Program: BeBl_A09*, BeBl_C09* & BeBl_E09**
 - c. Professional Services Agreement:**
- VI. Public input**
- VII. Adoption of next meeting date**
- VIII. Adjournment**

**Has no previous certification*

Zoom Meeting Information

<https://monroecounty-in.zoom.us/j/83035503869?pwd=OEEd0Nkh4MlpaajBvcIFqazBpcE9tQT09>

Meeting ID: 830 3550 3869

Password: 515466

Dial by your location+1 312 626 6799 US (Chicago)

The meeting is open to the public. Dates are subject to change.

For additional information, please call the Office of the Monroe County Surveyor at (812) 349-2570.

Anyone who requires an auxiliary aid or service for effective communication, or a modification of policies or procedures to participate in a program, service, or activity of Monroe County, should contact Monroe County Title VI Coordinator, (812) 349-2553, as soon as possible but no later than forty-eight (48) hours before the scheduled event.

Individuals requiring special language services should, if possible, Government Title VI Coordinator at least seventy-two (72) hours prior to the date on which the services will be needed.

Survey Utility



MONROE COUNTY SURVEYOR REVIEW BOARD
HYBRID MEETING Via Zoom App
Tuesday, April 18, 2023, at 4:00 PM
MEETING MINUTES

MEMBERS PRESENT: Eric Deckard, Rachel Oser

MEMBERS ABSENT: Todd Borgman

STAFF: Trohn Enright-Randolph, Jason George, Donna Barbrick (Secretary), TSD

- I. Call to Order. Meeting called to order at 4:01 pm by Trohn Enright-Randolph.**
- II. Approval of agenda. Motion to approve by Eric Deckard; second by Rachel Oser. VOTE: YES (unanimous). Agenda approved.**
- III. Approval of minutes from March 21, 2023. Motion to approve by Deckard; second by Oser. VOTE: YES-1 (Deckard); ABSTAIN-1 (Oser). Minutes approved.**
- IV. New Business**

a. Office Update

Trohn talked about the upcoming move to Showers Building. He said within two to four months we should be in a more suitable location for MCSO. He talked about an area for digitization and archiving. Oser said the scans of the legal survey books are not great. She said US Imaging has a mobile unit for scanning records. She said the quote for Greene County's legal survey books seemed like a pretty good deal and included enhancing images. She said the MC Recorders office had a very nice book scanner and she had asked Eric to scan one of the township plat books. There was a discussion of contracting out scanning versus in-house scanning.

Trohn said Senate Bill 242 concerns best available data for DNR. He said there is language identifying LIDAR as having a level of uncertainty. Deckard said the flood plain portal is an awesome tool. He said the FEMA flood plain maps go back to the eighties and they are horrible.

V. Certification of corners:

a. County Surveyor Perpetuation:

i. Tabled Corners: Per_S21*, VanBu_Y17 & Per_A17

Per_S21. Trohn read an email from Todd Borgman commenting on this corner:

I agree with Eric that his recent survey establishing the iron pipe at the NE Corner has better supporting evidence than the rebar I held. Therefore, I would vote "no" on certifying S21 that I established by split. I would recommend the Surveyor's Office reach out to BRCJ and try the find or establish the stone shown on the attached BRG surveys. I am not sure it would change anything, but it could be strong supporting evidence. I know Eric and I both looked for the stone but were unable to locate it.

Oser said we need to vote no on this because it needs to come back as a different monument. **Motion by Oser to deny certification of the 5/8" rebar with yellow cap stamped SDG on this monument record and will be revisiting this corner in the future. Second by Deckard. VOTE: AYE (unanimous). Motion carried.**

VanBu_Y17 and Per_A17. Trohn said VanBu_Y17 has been previously tired off. He read the history. Per_A17 is the offset corner. There was a discussion of a Farkas tiesheet that had been misfiled/mislabeled incorrectly long ago. **Motion to approve VanBu_Y17 and Per_A17 by Oser;**

second by Deckard. VOTE: AYE (unanimous). Motion carried. Oser requested an older tiesheet labeled as Per_A17 be correctly labeled as Per_Y17.

ii. New Corners: Wash_E19, Wash_I17, Wash_M15, Wash_K17* & Wash_K21

Wash_E19. Trohn read the theory of location and survey history. He noted that the sandstone was tested by MCSO in 2020. **Motion to approve by Deckard; second by Oser. VOTE: AYE (unanimous). Motion carried.**

Wash_I17. Trohn read the history. Oser suggested edits to Witness B and Witness E so that descriptions and the map would match. **Motion by Oser to approve Wash_I17 with the condition that the side of the tree on Witness B and Witness E are both re-evaluated based on most recent field notes and Witness C is changed from “pk” to “signal.” Second by Deckard. VOTE: AYE (unanimous). Motion carried.**

Wash_M15. Trohn read the theory of location and survey history. **Motion to approve by Deckard; second by Oser. VOTE: AYE (unanimous). Motion carried.**

Wash_K17 and Wash_K21: Motion by Oser to table; second by Deckard. VOTE: AYE (unanimous). Motion carried.

VI. Public input-none

VII. Adoption of next meeting date. Trohn said we will follow up about a meeting date.

VIII. Adjournment

Meeting adjourned at approximately 5:24 pm.

**Has no previous certification*

Minutes approved: _____

Tiesheets added: _____

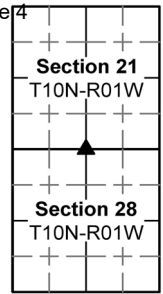
PENDING

MONUMENT RECORD

Corner ID: **Wash_K17**

Quarter Corner

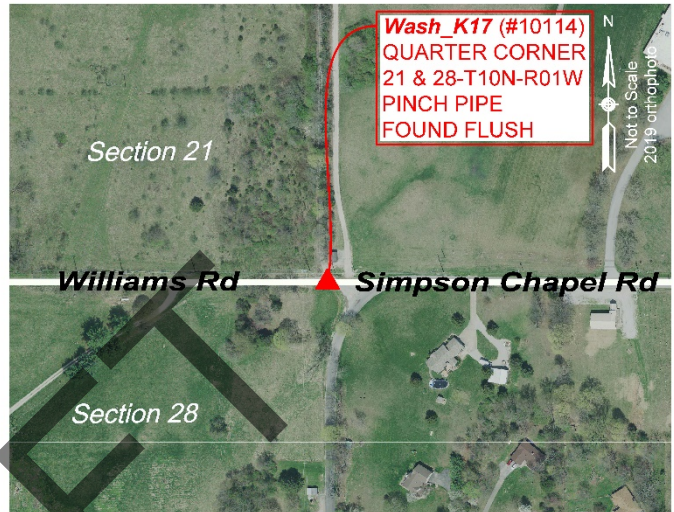
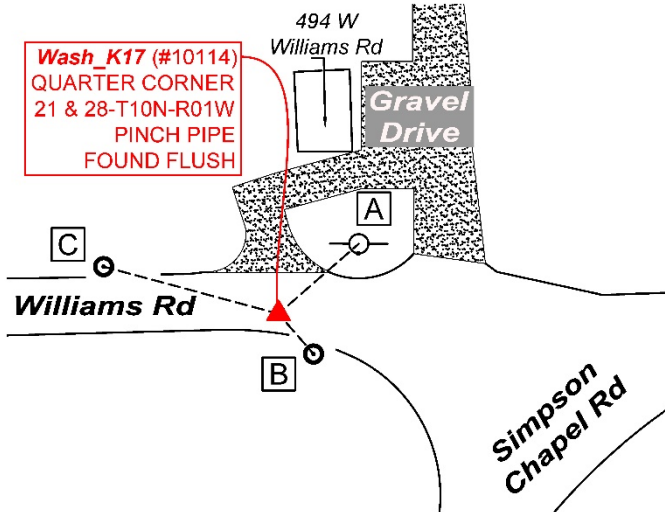
Sections 21 & 28- T10N-R01W, 2nd P.M.
Washington Township, Monroe County, Indiana



MONUMENT: Describe monument set or found (Include material type, scribing, distance above/below grade, dimensions.)

1" Pinch pipe found flush in asphalt south of centerline in W Williams Road.

MONUMENT LOCATION SKETCH:



WITNESS MONUMENT TIES			
ID	BEARING	DISTANCE	DESCRIPTION
Witness A	N 49d E	27.7'	A mag nail found 0.9' above grade on the south side of a 13" power pole. A "Protect Nearby Survey Marker" sign was set 4.7' above grade on the south side of the pole.
Witness B	S 41d E	13.9'	Stop sign facing west with steel post at Williams Road and Simpson Road.
Witness C	N 75d W	47.2'	Steel post with speed limit sign facing east.

PHOTO IDENTIFIED: Photo Date: 08/06/2020



Photo Orientation & Description: Looking east at Wash_K17



Photo Orientation & Description: Looking south at Wash_K17



PENDING

MONUMENT RECORD

Corner ID: **Wash_K17**

Quarter Corner

Sections 21 & 28- T10N-R01W, 2nd P.M.
Washington Township, Monroe County, Indiana

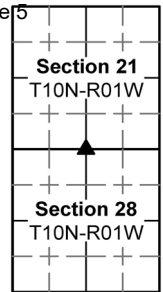


Photo Orientation & Description: Looking west at Wash_K17



Photo Orientation & Description: Looking north at Wash_K17

ORIGINAL OR SUBSEQUENT SURVEY EVIDENCE FOUND: *Include, search area or areas, search procedure, etc.*
 Date of Field work/Search: 08/06/2020 & 3/29/2023 By: CAR & TER & HJ & JG Monument Found: Pinch Pipe BTs or Reference Objects
 Found: Mag nail found per 2012 Monroe County Surveyor tie sheet Project #: Section Corners 2020 Field Book: 54/9 Equipment:
 The basis of bearings is Grid North System NAD83(2011)/Indiana West NAVD 88, Epoch 2010.0000, geoid12b_conus.db3, US
 Survey Feet, derived from GPS observations utilizing the Indiana Real-Time Network (INCORS). Coordinate data was collected with
 a Javad Triumph LS Network Rover. Coordinates are available upon request. Distances to witness ties were collected with a 100'
 measuring tape. Bearings to witness ties were collected with the internal magnetic compass of the Javad Triumph LS and were
 automatically adjusted to grid north and are approximately shown hereon for reference. Priority should be given to provided
 distances over bearings. Notes: We measured with tape using distances from the old witness ties found per the 2012 tie sheet, and
 found that this pipe matched the measurements from the old 2012 tie sheet.

OTHER EVIDENCE: *Describe corner location relative to nearby features and how to reach the corner location – note fences, roads, timber cutting
 lines, mow lines, clearings, plantings, streams, topo changes, etc.*
 The monument is south of the centerline and 5.3' north of the edge of asphalt to the south of W Williams Road.

MONUMENT PRESERVATION: *Describe work done to preserve existing monument.*
 Collected new coordinates, updated bearings/distances on the mag nail found and took new witnesses. Spray painted the
 monument orange. A "Protect Nearby Survey Marker" sign was set on the power pole referenced with witness A.

THEORY OF LOCATION: *Describe the theory of location for acceptance of this monument. Include monument origin and associated uncertainty.*
 References on File: A Marty J. James survey, Service Facility-Lee Paul Road (2017), on file at the Recorder's Office as
 2017010999.IN and an Eric L. Deckard survey, Walls- Sliding Scale Subdivision Final Plat (2021), on file at the Recorder's Office as
 2021000685.IN. Historic research has not yet been performed to prove the validity of this monument.

CERTIFICATIONS:



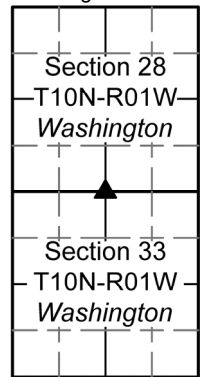
PENDING

MONUMENT RECORD

Corner ID: **Wash_K21**

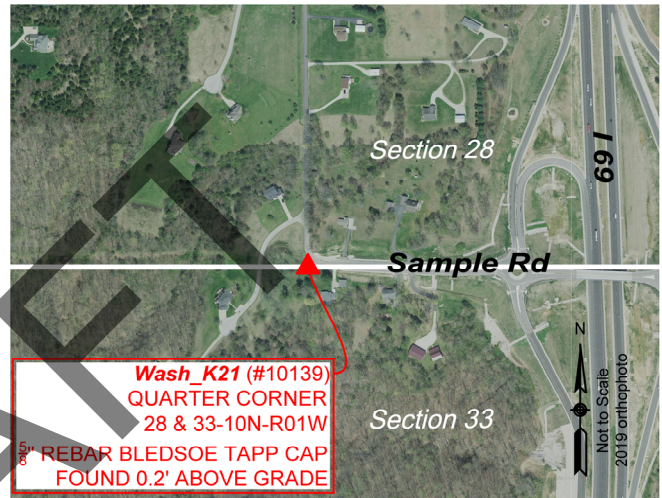
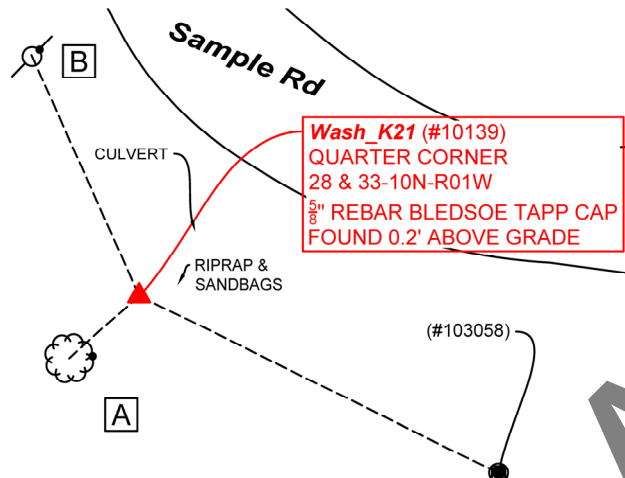
Quarter Corner

Sections 28 & 33- T10N-R01W, 2nd P.M.
Washington Township, Monroe County, Indiana



MONUMENT: Describe monument set or found (Include material type, scribing, distance above/below grade, dimensions.)
5/8" Rebar with yellow plastic cap stamped "Bledsoe Tapp PC 50920004" 0.2' above grade approximately 40' southwest of the north-west elbow of West Sample Road.

MONUMENT LOCATION SKETCH:



WITNESS MONUMENT TIES

All ties to new Bearing Trees (BTs) are a mag nail set in a 1-1/2" plastic washer stamped "SURVEY MARKER - DO NOT REMOVE" and hack mark at the root crown (less than 12" above ground) perpendicular to the center of the tree, unless otherwise noted. BT diameters are noted as dbh and are measured approximately 4.5' above ground. Bearings are measured from the monument to the center of the BT, distances are measured from the monument to the mag nail.

ID	BEARING	DISTANCE	DESCRIPTION
Witness A	S 48d W	15.0'	Mag nail and washer set in hack 0.7' above grade on the east side of a 4" White Ash Tree.
Witness B	N 24d W	42.2'	Mag nail and washer set 0.2' above grade on the northeast side of an 11" power line pole.

MONUMENT ACCESSORIES

Other survey grade monuments that were located in the vicinity and their relation to the monument.

(#103058)	S 63d35'0" E	64.08'	Point collected at center top of 4" water pipeline, blue and white PVC reading, "Warning Water Pipeline Call Before You Dig 811" 4.2' above grade.
-----------	--------------	--------	--



OFFICE OF THE MONROE COUNTY SURVEYOR • Trohn Enright-Randolph

119 W 7th Street, Bloomington, IN 47404 • 812-349-2570 • surveyoroffice@co.monroe.in.us

PENDING**MONUMENT RECORD**Corner ID: **Wash_K21****Quarter Corner**

Sections 28 & 33- T10N-R01W, 2nd P.M.
Washington Township, Monroe County, Indiana

		Section 28	
		T10N-R01W	
		Washington	
		▲	
		Section 33	
		T10N-R01W	
		Washington	

PHOTO IDENTIFIED: Photo Date: 8/26/2022

Photo Orientation & Description: Wash_K21 from above



Photo Orientation & Description: Looking southwest at Wash_K21 from Sample Road

ORIGINAL OR SUBSEQUENT SURVEY EVIDENCE FOUND: *Include, search area or areas, search procedure, etc.*

Date of Field work/Search: 08/26/2022 & 3/29/2023 By: JG & HJ Monument Found: Rebar with Bledsoe Tapp cap BTs or Reference Objects Found: None of the witnesses exist from the 2004 Monument Record. Witness B 2004: the powerline pole was new as many of the powerline poles along Sample Road were replaced. Witness C 2004: Major work on Sample Road has been performed in 2022 and 2023. All arrow signs and their anchors are gone. Witness D 2004: Work has been done in drainage area. Project #: Washington Monuments Field Book: 55/03 & 55/30 Equipment: The basis of bearings is Grid North System NAD83(2011)/Indiana West NAVD 88, Epoch 2010.0000, geoid12b_conus.db3, US Survey Feet, derived from GPS observations utilizing the Indiana Real-Time Network (INCORS). Coordinate data was collected with a Javad Triumph LS Network Rover. Coordinates are available upon request. Distances to witness ties were collected with 100' measuring tape. Bearings to witness ties were collected with the internal magnetic compass of the Javad Triumph LS and were automatically adjusted to grid north and are approximately shown hereon for reference. Priority should be given to provided distances over bearings. Notes: All witness photos on file in the Monroe County Surveyors Office.

OTHER EVIDENCE: *Describe corner location relative to nearby features and how to reach the corner location – note fences, roads, timber cutting lines, mow lines, clearings, plantings, streams, topo changes, etc.*

Wash_K21 is in a drainage area off West Sample Road. The ground is soft, and there are some gravel and landscaping efforts to disperse whatever stormwater issues may exist at this site. The site is south of Canyon Court, and one may park in the brush along the west side of Sample Road.

MONUMENT PRESERVATION: *Describe work done to preserve existing monument.***OFFICE OF THE MONROE COUNTY SURVEYOR • Trohn Enright-Randolph**

119 W 7th Street, Bloomington, IN 47404 • 812-349-2570 • surveyoroffice@co.monroe.in.us

Page 2 of 3

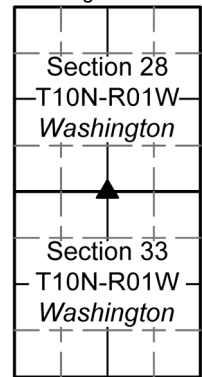
PENDING

MONUMENT RECORD

Corner ID: **Wash_K21**

Quarter Corner

Sections 28 & 33- T10N-R01W, 2nd P.M.
Washington Township, Monroe County, Indiana



“Protect Nearby Survey Markers” sign was wobbly due to the softness of the ground. MCSO secured the sign at 2.8’ above grade and set new witnesses. Geodetic controls were taken for the monument and witness (#103058).

THEORY OF LOCATION: *Describe the theory of location for acceptance of this monument. Include monument origin and associated uncertainty.*
The rebar was previously witnessed by the Monroe County Surveyor, Steven V. Farkas, on December 27, 2004, using the work of licensed surveyor Ben E. Bledsoe (LS #0559). References on File: Tracy L. McGill survey, Location Control Route Survey Plat Proposed I-69 Section 5 Segment 4 (2013), on file at the Recorder’s Office as 2013015455.IN, a survey by Daniel J. Isaacs, Plan and Profile Sample Road (2021), on file at the Surveyor’s Office as RSID004806 and a survey by Eric L. Deckard, Castillo Boundary Survey (2021), on file at the Recorder’s Office as 2021014998.IN. Historic research has not yet been performed to prove the validity of this monument.

CERTIFICATION:

DRAFT



OFFICE OF THE MONROE COUNTY SURVEYOR • Trohn Enright-Randolph

119 W 7th Street, Bloomington, IN 47404 • 812-349-2570 • surveyoroffice@co.monroe.in.us

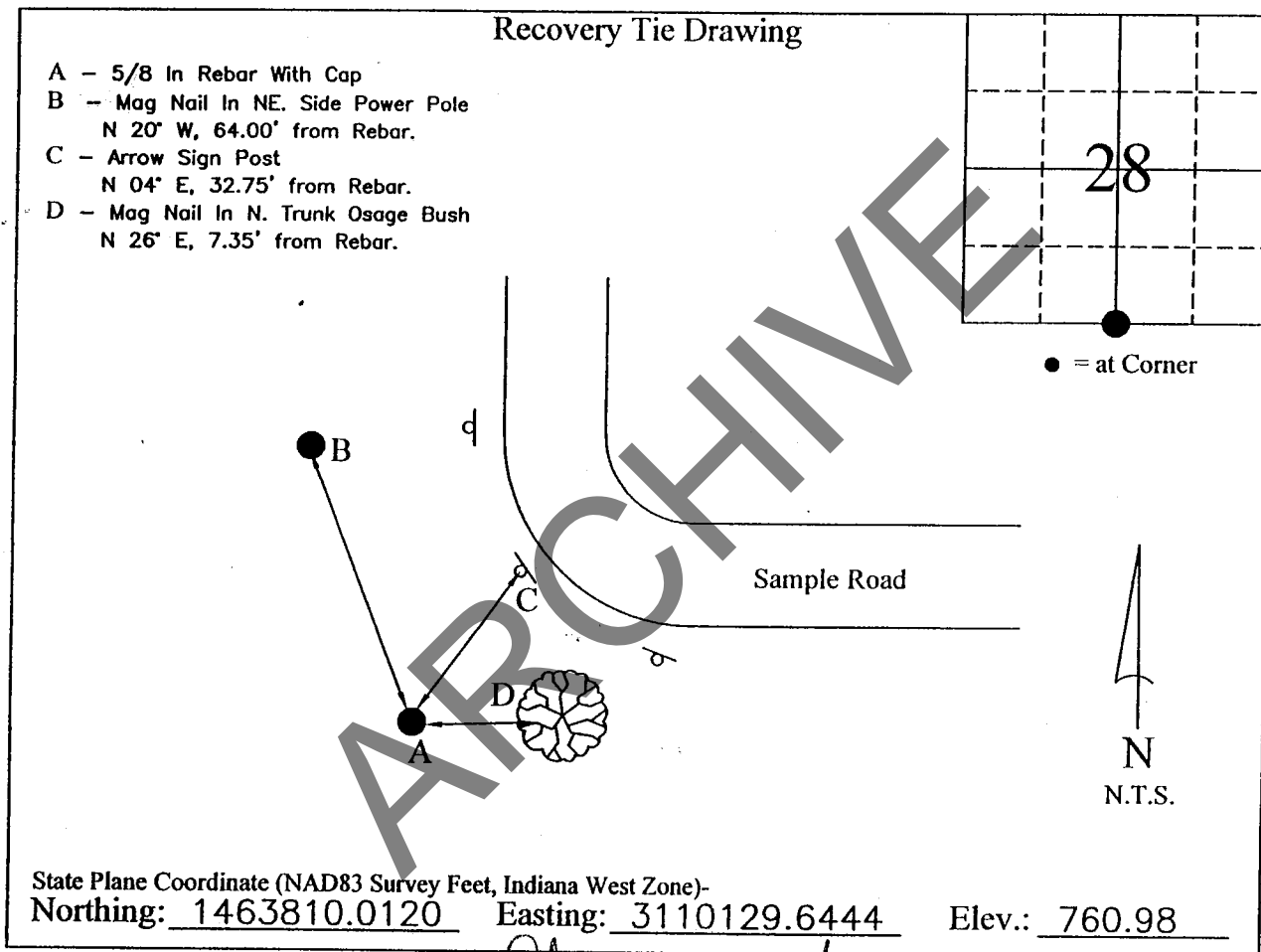
Corner I.D. # K-21

MONUMENT RECORD

STATE OF INDIANA ~ COUNTY OF MONROE

Section 28, Township 10 North, Range 1 West,

Monument Description & Remarks: 5/8" Rebar With Plastic Cap Inscribed "Bledsoe Tapp PC 50920004"



COMPLETED By *Steve U. Faulkner*

I, Ben E. Bledsoe, Registered Land Surveyor, here by certify that this document was prepared under my direction in accordance with the provisions of Section 17-3-64-4 through 17-3-64-8 of the Indiana Code, being Acts of 1965, Chapter 319; this 27th day of December, 2004 A.D.

Ben E. Bledsoe

Indiana Registered Land Surveyor No. S0559



MONUMENT RECORD

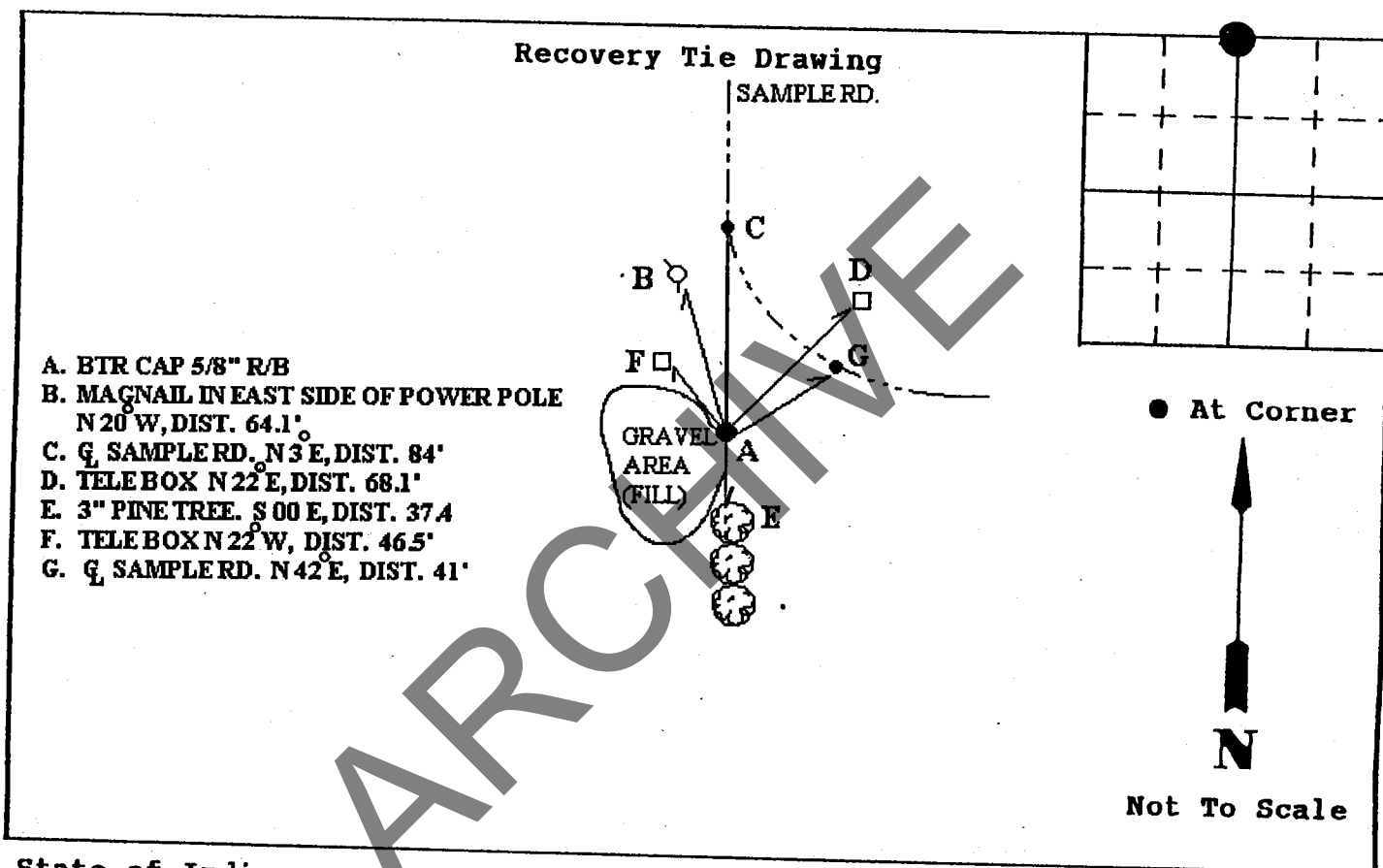
Corner I.D. #

WASH - K - 21

STATE OF INDIANA - COUNTY OF MONROE

Section 33, Township 10 NORTH, Range 1 WEST

Monument Description & Remarks: BTR CAP 5/8" R/B MARKS the NORTH EAST CORNER of the NORTH EAST 1/4 of the NORTH WEST 1/4.



State of Indiana
County of MONROE

Space Reserved For
Recording
Officer

I, Steven V. Farkas (STEVEN V. FARKAS), hereby certify that this document was prepared under my direction in accordance with the provisions of Section 17-3-64-4 through 17-3-64-8 of the Indiana Code, being Acts of 1965, Chapter 319; and the above data is given under my hand and seal this 19th day of MARCH, 2001 A.D.

Indiana Registered Land Surveyor No. _____ or

United States Government Agency
MONROE COUNTY SURVEYOR
Title _____

Field Book:

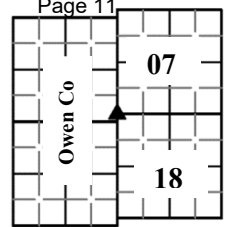
Page:

MONUMENT RECORD

Corner ID: **BeBI_A09**

Section Corner

Sections 7 & 18 – T10N-R02W, 2nd P.M.
 Bean Blossom Township, Monroe County, Indiana



EXISTING SURVEY HISTORY

Include as much detail and history of the corner as known at the time of perpetuation.

ORIGINAL GOVERNMENT SURVEY:

Year Surveyed: **1816** By: **William Harris**

Where filed or recorded: **page 264**

Original monument: **wood post**

Bearing Trees or Reference Monuments:

Species	Dia.	Bearing	Distance
Beech	18"	S 17 W	34 lks
Poplar	30"	N 64 E	20 lks

Notes: **52 links (34.32') N of corner for Sec. 12 & 13, 10N, 3W**

SUBSEQUENT CORNER RESTORATION:

Date Surveyed: By:

Where filed or recorded:

Original monument:

Bearing Trees or Reference Monuments:

Species	Dia.	Bearing	Distance

Notes:

SUBSEQUENT CORNER RESTORATION:

Date Surveyed: By:

Where filed or recorded:

Original monument:

Bearing Trees or Reference Monuments:

Species	Dia.	Bearing	Distance

Notes:

SUBSEQUENT CORNER RESTORATION:

Date Surveyed: By:

Where filed or recorded:

Original monument:

Bearing Trees or Reference Monuments:

Species	Dia.	Bearing	Distance

Notes:

SURVEY EVIDENCE FOUND: Include evidence found and weighed, search area or areas, search procedure, etc.

Date of Search: **8/2019** By: **J. Gwinn** Monument Found: **Mag nail** BTs or Reference Objects Found: **none** Notes: **Mag nail found in the centerline intersection of County Line Road and Wolf Mountain Road.**

OTHER SURVEY HISTORY: Include details such as surveyor name, date, recording info, monument description, etc.

The origin of this nail is unknown. Several surveys dating back to the 1980's reference this corner as the Point of Beginning. However, only one survey from 2008 by James Bennett actually calls out the nail as the monument at the corner.

PERPETUATION RECORD

MONUMENT: Describe monument set or found (Include material type, scribing, distance above/below grade, dimensions.)

A mag nail was found flush at the centerline intersection of County Line Road and Wolf Mountain Road.

OTHER EVIDENCE: Describe corner location relative to nearby features and how to reach the corner location – note fences, roads, timber cutting lines, mow lines, clearings, plantings, streams, topo changes, etc.

The monument is in the centerline intersection of County Line Road and Wolf Mountain Road surrounded by open farm fields.

THEORY OF LOCATION: Describe the theory of location for acceptance of this monument with reference to the recording information for the survey upon which this record is derived. Said recorded survey shall be certified by the same professional surveyor who certifies this document, shall identify and accept this monument, and shall have been recorded within (3) years of Form submittal.

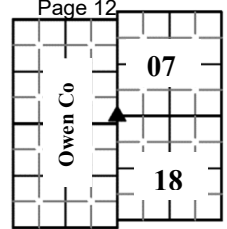
Other than the original wood post set in 1816, there were no other perpetuation records for this corner. In farm country such as this it is common for the section corners to be at the centerline intersection of the roads. As such, this nail was held as the best available evidence for this corner. A nail was found 32.6 feet north of the corner in the centerline of the road. This nail was likewise of unknown origin. Using the nail at the centerline intersection makes all of the property corners to the east fall in the road which is what would be expected. Not always, but usually. Refer to "Carter Sliding Scale Subdivision" by Jess A. Gwinn, RLS 29300019, dated 1/24/2020, to be recorded.

MONUMENT RECORD

Corner ID: **BeBI_A09**

Section Corner

Sections 7 & 18 – T10N-R02W, 2nd P.M.
 Bean Blossom Township, Monroe County, Indiana



MONUMENT PRESERVATION: Describe work done to preserve existing monument. Stone mounds should be placed around monuments when stones are readily available. Paint corner stones but not the scribing. A Monroe County “PROTECT NEARBY SURVEY MARKER” sign shall be attached to a steel post when practicable. Note location and relation of corner to sign.

Nail and asphalt around it painted pink. Sign nailed to the east side of a utility pole at S 53 W 26 feet away.

GEODETIC COORDINATES: Northing: *1479943.0816*, Easting: *3065345.3895*

BASIS OF GEODETIC COORDINATES: Describe equipment, date, and personnel used to collect coordinates, datum, epoch, geoid and zone (e.g., Grid North System NAD83(2011)/Indiana West NAVD 88, Epoch 2010.0000, geoid12b_conus.db3, US Survey Feet, derived from GPS observations collected by Rachel Oser on December 13, 2018 utilizing a Javad Triumph LS Rover and a Javad Triumph 2 Base. Static observations were post-processed using the JAVAD GNSS Data Online Processing Service (DPOS). Distances obtained with GPS have not been adjusted to ground.)

Grid North NAD 83(2011), epoch 2010.0000, Indiana West NAVD 88, geoid 12B, US Survey feet, derived from RTK GPS observations taken 8/18/2019 using a Topcon GR5 base and rover. Grid distances have not been scaled to ground.

WITNESS MONUMENT TIES: Describe at least three new BT's and/or witness objects established or work done to preserve existing evidence. The following procedures are provided for guidance. Please utilize professional judgment when choosing witness ties.

All ties to BT's should be a magnetic nail and washer (state what kind) set in a hack mark at root crown (less than 12” above ground) perpendicular to center of tree unless otherwise noted. All monuments should be tied to at least three accessories with a minimum of 60° of separation. BTs should be healthy with a minimum DBH of 4”. BT description should include tree species, diameter at 4.5’ above ground, distance of nail above ground, and description of nail location (e.g., SE side of root). Note bearing from monument to the center of the BT, distance to the nail. Other survey monuments that were located in the vicinity and their relation to the monument may also be included.

ID	Bearing	Distance	Description
<i>Pole</i>	<i>S 53 W</i>	<i>25.75</i>	<i>20d nail w/ brass ID tag 1' up the SE side of a utility pole; Mag nail still in</i>
<i>Nail</i>	<i>North</i>	<i>32.6</i>	<i>nail found 1" deep in the centerline of County Line Road</i>
<i>rail</i>	<i>N 40 E</i>	<i>29.35</i>	<i>SE corner of 3' tall rail road rail</i>
<i>house</i>	<i>N 37 E</i>	<i>131.40</i>	<i>SW corner of house foundation</i>
<i>post</i>	<i>S 67 E</i>	<i>40.48</i>	<i>20d nail w/ brass ID tag 6" up NE side of wood fence post</i>

Notes: *Nail previously located 40.46 feet south of the corner not found this survey. Possibly paved over.*

MONUMENT LOCATION SKETCH: Optional: Attach a sketch or aerial image. Monument sketch is not required for reimbursement.

PHOTO IDENTIFIED: Photograph close up photo of monument and a vicinity photo of the monument that includes the Monroe County “PROTECT NEARBY SURVEY MARKER” sign. Provide photo orientation and date. Additional photos may be included by clicking the “+” button at the end of the horizontal line.

Photo Date: *1/28/2020*



MONUMENT RECORD

Corner ID: **BeBI_A09**

Section Corner

Sections 7 & 18 – T10N-R02W, 2nd P.M.
 Bean Blossom Township, Monroe County, Indiana

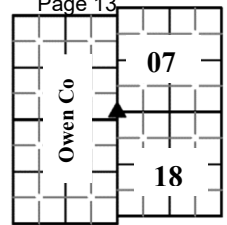


Photo Orientation & Description: **From E. looking W. to corner (under cone)**



Photo Orientation & Description: **From S. looking N. to corner (under cone); house witness to right; rail witness next to road sign.**

Photo Orientation & Description: **From N. looking S. to corner (under cone); found witness nail in foreground**

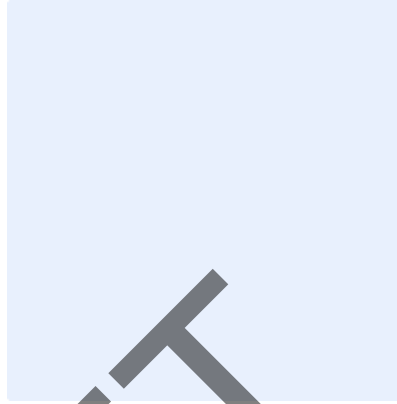


Photo Orientation & Description:

FIELD PERSONNEL:

Field Date: **1/28/2020** By: **J. Gwinn** Project #: **1171** Field Book: _____, page: _____ Notes:

CERTIFICATION:

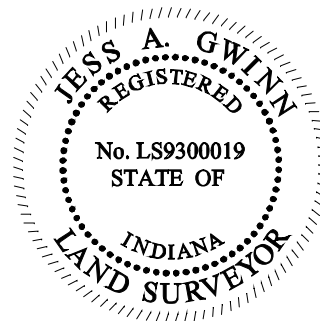
Professional Surveyor Name: **Jess A. Gwinn**

Indiana Professional Surveyor No.: **29300019**

Firm Name:

Date: **2/12/2020**

Signature:



Seal:

OFFICE USE ONLY

NOTICE TO PROCEED AND MONUMENT RECORD FORM ISSUED TO:			
Offeror Name: Jess Gwinn	Firm Name: Jess A. Gwinn RLS		
Phone: 812-876-7111	Email: jagmo@bluemarble.net		
Corner Classification: Referenced		Corner Coordinate Status: Unknown	
Issue Date: 09/09/2019	Form Due Date: 05/18/2020	Form Receipt Date:	

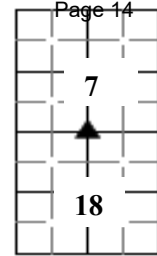
MONUMENT RECORD

Corner ID: **BeBI_C09**

Quarter Corner

Sections 7 & 18- T10N-R02W, 2nd P.M.

Bean Blossom Township, Monroe County, Indiana



EXISTING SURVEY HISTORY

Include as much detail and history of the corner as known at the time of perpetuation.

ORIGINAL GOVERNMENT SURVEY:

Year Surveyed: **1816** By: **William Harris**

Where filed or recorded: **page 264**

Original monument: **wood post**

Bearing Trees or Reference Monuments:

Species	Dia.	Bearing	Distance
Beech	9"	N 45 W	10 lks
Hickory	10"	N 80 E	18 lks

Notes:

SUBSEQUENT CORNER RESTORATION:

Date Surveyed: By:

Where filed or recorded:

Original monument:

Bearing Trees or Reference Monuments:

Species	Dia.	Bearing	Distance

Notes:

SUBSEQUENT CORNER RESTORATION:

Date Surveyed: By:

Where filed or recorded:

Original monument:

Bearing Trees or Reference Monuments:

Species	Dia.	Bearing	Distance

Notes:

SUBSEQUENT CORNER RESTORATION:

Date Surveyed: By:

Where filed or recorded:

Original monument:

Bearing Trees or Reference Monuments:

Species	Dia.	Bearing	Distance

Notes:

SURVEY EVIDENCE FOUND: Include evidence found and weighed, search area or areas, search procedure, etc.

Date of Search: **8/2019** By: **J. Gwinn** Monument Found: **none** BTs or Reference Objects Found: **none** Notes: **A 5/8" capped rebar w/ cap "Farkas S0114" was found 4" tall at N 84°01'01" W 9.25 feet away. This rebar was only set to mark a property corner and was not intended to mark the 1/4 corner per his survey dated 6/21/2000. Subsequently this rebar was erroneously accepted and used as the 1/4 corner by Raymond Graham and then others.**

OTHER SURVEY HISTORY: Include details such as surveyor name, date, recording info, monument description, etc.

PERPETUATION RECORD

MONUMENT: Describe monument set or found (Include material type, scribing, distance above/below grade, dimensions.)

A 5/8" capped rebar was set 4" tall at this corner.

OTHER EVIDENCE: Describe corner location relative to nearby features and how to reach the corner location – note fences, roads, timber cutting lines, mow lines, clearings, plantings, streams, topo changes, etc.

Old wire fencing heads south across Wolf Mountain Road.

THEORY OF LOCATION: Describe the theory of location for acceptance of this monument with reference to the recording information for the survey upon which this record is derived. Said recorded survey shall be certified by the same professional surveyor who certifies this document, shall identify and accept this monument, and shall have been recorded within (3) years of Form submittal.

No perpetuation records exist for this corner. As explained above a nearby 5/8" capped rebar was incorrectly accepted as the corner by other surveyors. The corner location was calculated at the single proportionate measurement between the monuments found at the southeast and southwest corners of the section. Refer to "Carter Sliding Scale Subdivision" by Jess A. Gwinn, RLS 29300019, dated 1/24/2020, to be recorded.

MONUMENT PRESERVATION: Describe work done to preserve existing monument. Stone mounds should be placed around monuments when stones are readily available. Paint corner stones but not the scribing. A Monroe County "PROTECT NEARBY SURVEY MARKER" sign shall be attached to a steel post when practicable. Note location and relation of corner to sign.

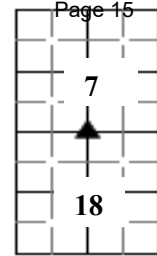
MONUMENT RECORD

Corner ID: **BeBI_C09**

Quarter Corner

Sections 7 & 18- T10N-R02W, 2nd P.M.

Bean Blossom Township, Monroe County, Indiana



Sign nailed to the northwest side of an 8" Beech at S 21 E 4 feet away.

GEODETIC COORDINATES: Northing: **1479949.70644**, Easting: **3067574.21832**

BASIS OF GEODETIC COORDINATES: Describe equipment, date, and personnel used to collect coordinates, datum, epoch, geoid and zone (e.g., Grid North System NAD83(2011)/Indiana West NAVD 88, Epoch 2010.0000, geoid12b_conus.db3, US Survey Feet, derived from GPS observations collected by Rachel Oser on December 13, 2018 utilizing a Javad Triumph LS Rover and a Javad Triumph 2 Base. Static observations were post-processed using the JAVAD GNSS Data Online Processing Service (DPOS). Distances obtained with GPS have not been adjusted to ground.)

Grid North NAD 83(2011), epoch 2010.0000, Indiana West NAVD 88, geoid 12B, US Survey feet, derived from static GPS observations taken 8/18/2019 using a Topcon GR5 base and rover. Observations post processed using Topcon Magnet Tools. Grid distances have not been scaled to ground. Corner staked out using a Leica 1203 robotic total station.

WITNESS MONUMENT TIES: Describe at least three new BT's and/or witness objects established or work done to preserve existing evidence. The following procedures are provided for guidance. Please utilize professional judgment when choosing witness ties. All ties to BT's should be a magnetic nail and washer (state what kind) set in a hack mark at root crown (less than 12" above ground) perpendicular to center of tree unless otherwise noted. All monuments should be tied to at least three accessories with a minimum of 60° of separation. BTs should be healthy with a minimum DBH of 4". BT description should include tree species, diameter at 4.5' above ground, distance of nail above ground, and description of nail location (e.g., SE side of root). Note bearing from monument to the center of the BT, distance to the nail. Other survey monuments that were located in the vicinity and their relation to the monument may also be included.

ID	Bearing	Distance	Description
<i>rebar</i>	<i>N 84 W</i>	<i>9.25'</i>	<i>5/8" capped Farkas rebar found 4" tall</i>
<i>tree</i>	<i>N 56 E</i>	<i>8.00'</i>	<i>20d nail w/ brass ID tag in the northwest base of a 15" Red Oak</i>
<i>tree</i>	<i>S 21 E</i>	<i>4.15'</i>	<i>20d nail w/ brass ID tag in the west base of a 8" Beech w/ MCS sign</i>

Notes:

MONUMENT LOCATION SKETCH: Optional: Attach a sketch or aerial image. Monument sketch is not required for reimbursement.

PHOTO IDENTIFIED: Photograph close up photo of monument and a vicinity photo of the monument that includes the Monroe County "PROTECT NEARBY SURVEY MARKER" sign. Provide photo orientation and date. Additional photos may be included by clicking the "+" button at the end of the horizontal line.

Photo Date: **1/28/2020**



Photo Orientation & Description: *from E. looking W. to corner; found rebar further west.*



Photo Orientation & Description: *from N. looking S. to corner*

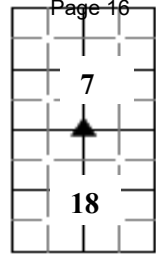
MONUMENT RECORD

Corner ID: **BeBI_C09**

Quarter Corner

Sections 7 & 18- T10N-R02W, 2nd P.M.

Bean Blossom Township, Monroe County, Indiana



FIELD PERSONNEL:

Field Date: *1/28/2020* By: *J. Gwinn* Project #: *1171* Field Book: _____, page: _____ Notes: _____

CERTIFICATION:

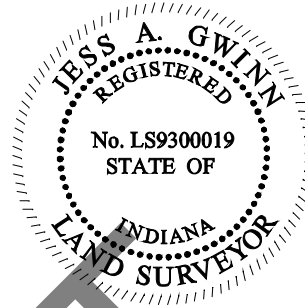
Professional Surveyor Name: *Jess A. Gwinn*

Indiana Professional Surveyor No.: *29300019*

Firm Name:

Date: *2/12/2020*

Signature:



Seal:

OFFICE USE ONLY

NOTICE TO PROCEED AND MONUMENT RECORD FORM ISSUED TO:		
Offeror Name: <i>Jess Gwinn</i>	Firm Name: <i>Jess A. Gwinn, RLS</i>	
Phone: <i>812-876-7111</i>	Email: <i>jagmo@bluemarble.net</i>	
Corner Classification: <i>Referenced</i>	Corner Coordinate Status: <i>Unknown</i>	
Issue Date: <i>9/09/2019</i>	Form Due Date: <i>05/18/2020</i>	Form Receipt Date:

COUNTY SURVEYOR APPROVAL:		Seal:
<input type="checkbox"/> Yes, Signature: _____ Date: _____		
<input type="checkbox"/> No, reasons for denial		

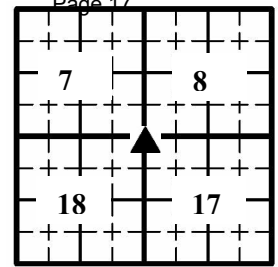
SURVEYOR REVIEW BOARD APPROVAL:	
<input type="checkbox"/> Yes, Signature: _____ Date: _____	

MONUMENT RECORD

Corner ID: **BeBI_E09**

Section Corner

Sections 7, 8, 17, & 18- T10N-R02W, 2nd P.M.
 Bean Blossom Township, Monroe County, Indiana



EXISTING SURVEY HISTORY

Include as much detail and history of the corner as known at the time of perpetuation.

ORIGINAL GOVERNMENT SURVEY:

Year Surveyed: **1816** By: **William Harris**

Where filed or recorded: **page 264**

Original monument: **wood post**

Bearing Trees or Reference Monuments:

Species	Dia.	Bearing	Distance
<i>S. Maple</i>	10"	S 28 W	12 lks
<i>Beech</i>	14"	N 30 E	45 lks

Notes:

SUBSEQUENT CORNER RESTORATION:

Date Surveyed: **9/6/1986** By: **Guy Moore**

Where filed or recorded: **Auditor**

Original monument: **I.P.**

Bearing Trees or Reference Monuments:

Species	Dia.	Bearing	Distance

Notes: **Presumably a found I.P. as it is not a corner of the property surveyed.**

SUBSEQUENT CORNER RESTORATION:

Date Surveyed: By:

Where filed or recorded:

Original monument:

Bearing Trees or Reference Monuments:

Species	Dia.	Bearing	Distance

Notes:

SUBSEQUENT CORNER RESTORATION:

Date Surveyed: By:

Where filed or recorded:

Original monument:

Bearing Trees or Reference Monuments:

Species	Dia.	Bearing	Distance

Notes:

SURVEY EVIDENCE FOUND: Include evidence found and weighed, search area or areas, search procedure, etc.

Date of Search: **8/2019** By: **J. Gwinn** Monument Found: **RR spike** BTs or Reference Objects Found: **yes** Notes: **A rail road spike was found 7" deep per the MCS Monument Record dated 8/9/2005. Did not dig further to reveal the pipe under the spike.**

OTHER SURVEY HISTORY: Include details such as surveyor name, date, recording info, monument description, etc.

Several other surveys refer to this corner monument as an "I.P." or don't state what monument is in place.

PERPETUATION RECORD

MONUMENT: Describe monument set or found (Include material type, scribing, distance above/below grade, dimensions.)

A rail road spike was found 7" deep. Presumably this spike is over a pipe found 1 foot deep.

OTHER EVIDENCE: Describe corner location relative to nearby features and how to reach the corner location – note fences, roads, timber cutting lines, mow lines, clearings, plantings, streams, topo changes, etc.

The spike is 2 feet west of the centerline of a gravel lane, approximately in line with county roads heading west and south and a gravel lane heading north.

THEORY OF LOCATION: Describe the theory of location for acceptance of this monument with reference to the recording information for the survey upon which this record is derived. Said recorded survey shall be certified by the same professional surveyor who certifies this document, shall identify and accept this monument, and shall have been recorded within (3) years of Form submittal.

There were no MCS perpetuation records for this corner. The found spike was thus accepted as the best evidence for this corner, having been accepted as the corner by several other surveys. Refer to "Carter Sliding Scale Subdivision" by Jess A. Gwinn, RLS 29300019, dated 1/24/2020, to be recorded.

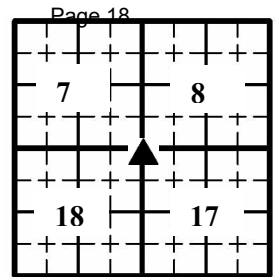
MONUMENT PRESERVATION: Describe work done to preserve existing monument. Stone mounds should be placed around monuments when stones are readily available. Paint corner stones but not the scribing. A Monroe County "PROTECT NEARBY SURVEY MARKER" sign shall be attached to a steel post when practicable. Note location and relation of corner to sign.

MONUMENT RECORD

Corner ID: **BeBI_E09**

Section Corner

Sections 7, 8, 17, & 18- T10N-R02W, 2nd P.M.
 Bean Blossom Township, Monroe County, Indiana



MCS sign nailed to NE side of a utility pole at S 42 W 12 feet away.

GEODETIC COORDINATES: Northing: **1479957.56280**, Easting: **3070229.13670**

BASIS OF GEODETIC COORDINATES: Describe equipment, date, and personnel used to collect coordinates, datum, epoch, geoid and zone (e.g., Grid North System NAD83(2011)/Indiana West NAVD 88, Epoch 2010.0000, geoid12b_conus.db3, US Survey Feet, derived from GPS observations collected by Rachel Oser on December 13, 2018 utilizing a Javad Triumph LS Rover and a Javad Triumph 2 Base. Static observations were post-processed using the JAVAD GNSS Data Online Processing Service (DPOS). Distances obtained with GPS have not been adjusted to ground.)

Grid North NAD 83(2011), epoch 2010.0000, Indiana West NAVD 88, geoid 12B, US Survey feet, derived from RTK GPS observations taken 8/18/2019 using a Topcon GR5 base and rover. Grid distances have not been scaled to ground.

WITNESS MONUMENT TIES: Describe at least three new BT's and/or witness objects established or work done to preserve existing evidence. The following procedures are provided for guidance. Please utilize professional judgment when choosing witness ties. All ties to BT's should be a magnetic nail and washer (state what kind) set in a hack mark at root crown (less than 12" above ground) perpendicular to center of tree unless otherwise noted. All monuments should be tied to at least three accessories with a minimum of 60° of separation. BTs should be healthy with a minimum DBH of 4". BT description should include tree species, diameter at 4.5' above ground, distance of nail above ground, and description of nail location (e.g., SE side of root). Note bearing from monument to the center of the BT, distance to the nail. Other survey monuments that were located in the vicinity and their relation to the monument may also be included.

ID	Bearing	Distance	Description
<i>pole</i>	<i>S 42 W</i>	<i>12.27'</i>	<i>20d nail w/ brass ID tag 8" up NW side; MCS on NE side</i>
<i>post</i>	<i>N 63 E</i>	<i>78.67'</i>	<i>20d nail w/ brass ID tag 1' up SE side of wood fence post</i>
<i>house</i>	<i>S 59 E</i>	<i>45.00'</i>	<i>NW corner of house foundation</i>
<i>post</i>	<i>N 19 W</i>	<i>59.36'</i>	<i>Mag nail 6" up SW side wood post; pt "C" on MCS tie sheet</i>
<i>post</i>	<i>N 48 E</i>	<i>74.09'</i>	<i>Mag nail 3' up NW side wood post; pt "D" on MCS tie sheet</i>

Notes: *distances shot with a Leica 1203 robotic reflectorless total station*

MONUMENT LOCATION SKETCH: Optional: Attach a sketch or aerial image. Monument sketch is not required for reimbursement.

PHOTO IDENTIFIED: Photograph close up photo of monument and a vicinity photo of the monument that includes the Monroe County "PROTECT NEARBY SURVEY MARKER" sign. Provide photo orientation and date. Additional photos may be included by clicking the "+" button at the end of the horizontal line.

Photo Date: **1/28/2020**



Photo Orientation & Description: **from N. looking south to corner w/ tripod & instrument over it.**



Photo Orientation & Description: **from W. looking east to corner w/ tripod & instrument over it.**

MONUMENT RECORD

Corner ID: **BeBl_E09**

Section Corner

Sections 7, 8, 17, & 18- T10N-R02W, 2nd P.M.
 Bean Blossom Township, Monroe County, Indiana

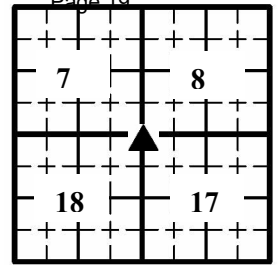


Photo Orientation & Description: *from S. looking north to corner w/ tripod & instrument over it.*



Photo Orientation & Description: *from NE looking SW to corner & U. pole with MCS sign.*

FIELD PERSONNEL:

Field Date: *1/28/2020* By: *J. Gwinn* Project #: *1171* Field Book: _____, page: _____ Notes: _____

CERTIFICATION:

Professional Surveyor Name: *Jess A. Gwinn*

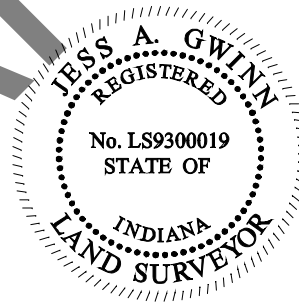
Indiana Professional Surveyor No.: *29300019*

Firm Name:

Date: *2/12/2020*

Signature:

DRAFT



Seal:

OFFICE USE ONLY

NOTICE TO PROCEED AND MONUMENT RECORD FORM ISSUED TO:		
Offeror Name: <i>Jess Gwinn</i>	Firm Name: <i>Jess A. Gwinn, RLS</i>	
Phone: <i>812-876-7111</i>	Email: <i>jagmo@bluemarble.net</i>	
Corner Classification: <i>Perpetuated</i>	Corner Coordinate Status: <i>Unknown</i>	
Issue Date: <i>9/09/2019</i>	Form Due Date: <i>05/18/2020</i>	Form Receipt Date:

COUNTY SURVEYOR APPROVAL:	
<input type="checkbox"/> Yes, Signature: _____ Date: _____	

MONUMENT RECORD
State of Indiana - County of Monroe

Section: 7

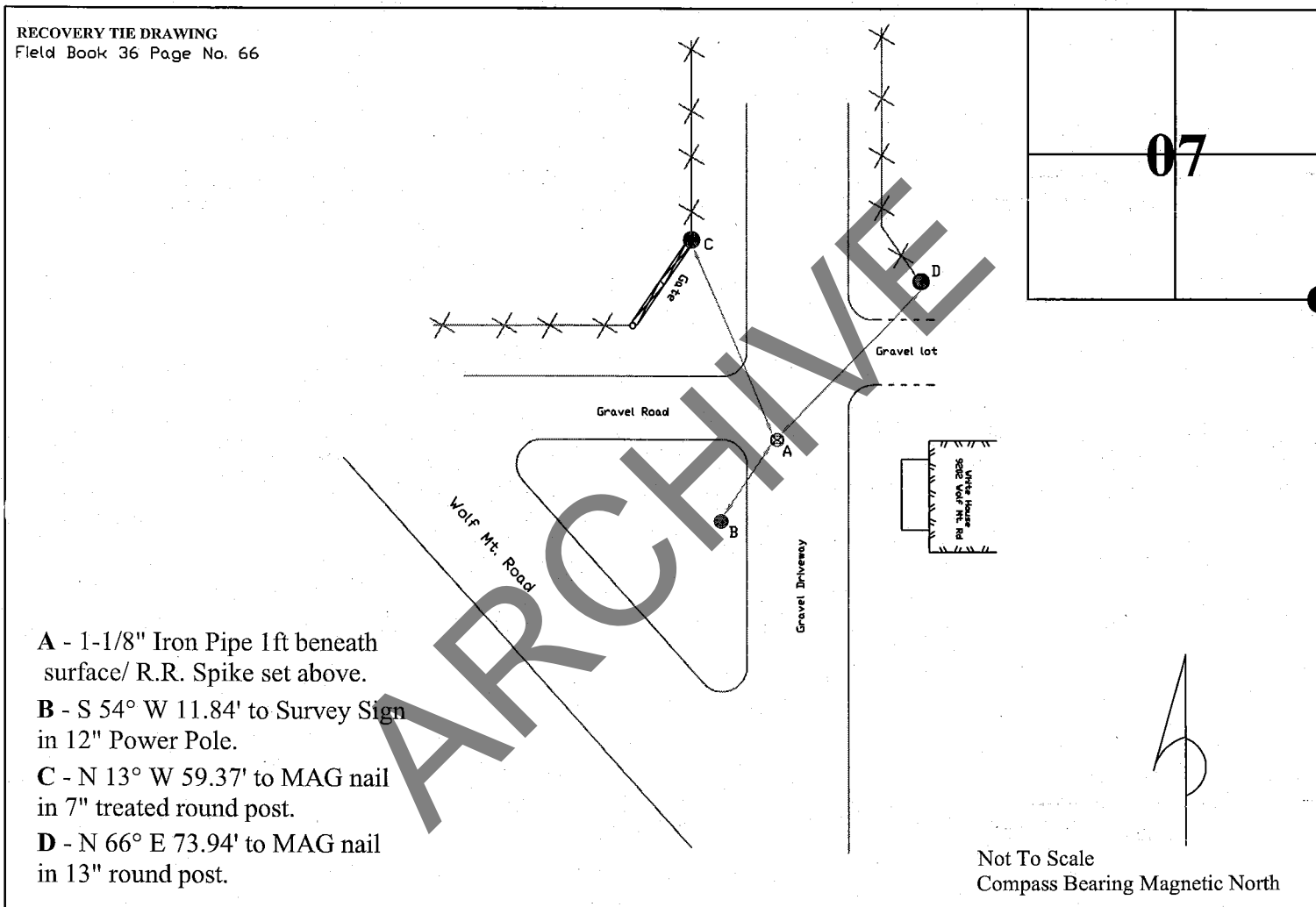
Township: 10 North

Range: 2 West

Corner ID: BeBl E-09

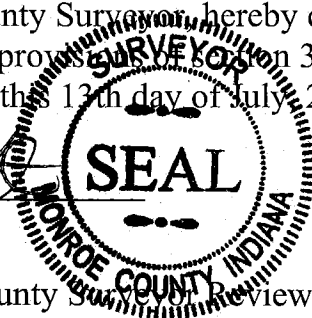
Monument Description & Remarks: 1-1/8" Iron Pipe 1ft beneath surface, set new R.R. Spike above iron pipe.

References On File: Phil Tapp survey, Robert & Althen Parsons deed records (183) page 6 & (229) page 491, on file in recorder's office.



I, Kevin P. Enright, Monroe County Surveyor, hereby certify that this document was prepared under my direction in accordance with the provisions of Section 36-2-12-11 of the Indiana Code; and the above data is given under my hand and seal this 13th day of July 2005.

Kevin Enright



Administered by the Monroe County Surveyor Review Board

Date: *August 9, 2005*