



**MEETING MINUTES**  
**SURVEYOR REVIEW BOARD**  
**501 N. Morton Ave. Room 211**  
**HYBRID MEETING Via Teams App**  
**Tuesday, February 20, 2024, 4:00 PM**

**MEMBERS PRESENT:** Rachel Oser, Deckard, Todd Borgman

**STAFF:** Trohn Enright-Randolph, Jason George, Mike Sheppard, Donna Barbrick

- I. Call to Order at 4:13 PM by Trohn Enright-Randolph.**
- II. Approval of agenda: Motion to approve by Eric Deckard; second by Todd Borgman. VOTE: AYE (unanimous). Agenda approved.**
- III. Approval of minutes from January 24, 2023: Motion to approve by Rachel Oser; second by Eric Deckard. VOTE: AYES-2; RECUSAL-1. Motion carried.**

**IV. New Business**

**a. Office Update**

Trohn said the office was contacted by a surveyor recently about a section corner and we would be reaching out. He said there would be a committee meeting tomorrow.

**b. Changes in the Surveyor List**

Oser had a minor change in the listing for Oser Surveying & Mapping.

**c. Are Direct Deposit Account Numbers Current?**

Donna Barbrick asked SRB members if their information was still current and they indicated yes. Trohn noted that an increase in board member had been recently approved by the county council and would take effect in 2024. He said board members would be paid at the end of the year.

**V. Certification of corners:**

**a. Corner Documentation Program: N/A**

**b. County Surveyor Perpetuation: Rich\_G01, Rich\_U11, VanBu\_G13, VanBu\_I09, VanBu\_K01\* & VanBu\_U09**

**Rich\_G01.** Trohn read from the draft tie sheet. He said a railroad spike was held; nothing significant has changed. He said he would like to add an additional reference to a Farkas tie sheet from 1981. **Motion by Todd Borgman to APPROVE WITH CONDITION of adding the reference from 1981. Second by Deckard. VOTE: AYE (unanimous). Motion carried.**

**Rich\_U11.** Trohn said this was previously tied off in 2008. Deckard had a question about the origin of a railroad spike in concrete. He commented that no one seems to know about it. **Motion by Oser to APPROVE WITH CONDITION of adding a diagram to the tiesheet. Second by Borgman. VOTE: AYE (unanimous). Motion carried.**

**VanBu\_G13.** Trohn said this was previously tied off by Mike Friley in 1995 and that a cairn was built around it. He said it was a limestone set by Ray Graham. Jason George said while they were there, they met the caretaker for the cave located nearby. There was a question about whether the monument was a limestone or concrete. **Motion to APPROVE by Deckard. Second by Borgman. VOTE: AYE (unanimous). Motion carried.**

**VanBu\_I09.** Trohn said this was previously tied off by Kevin Enright in 2012. **Motion to APPROVE by Oser. Second by Borgman. Oser had a comment about Witness D being 6 foot north. VOTE: AYE (unanimous). Motion carried.**

**VanBu\_K01.** Trohn said this was a new monument. He said the corner had been previously set by Jess Gwinn in 2008 while he was surveying for the Sycamore Land Trust. It was noted that this location was part of a SuperFund site, Neal's landfill where capacitors from Westinghouse had been dumped. **Motion to APPROVE by Deckard. Second by Borgman. VOTE: AYE (unanimous). Motion carried.**

**VanBu\_U09.** Trohn said this was last witnessed by Enright in 1997. **Motion to APPROVE by Borgman. Second by Oser. VOTE: AYE (unanimous). Motion carried.**

- VI. Public input: None**
- VII. Adoption of next meeting date: March 19.**
- VIII. Adjournment. The meeting adjourned at approximately 4:50 PM.**

Approved\_\_\_\_\_

Secretary\_\_\_\_\_

**PENDING**

**MONUMENT RECORD**

Corner ID: **Per\_Q25**

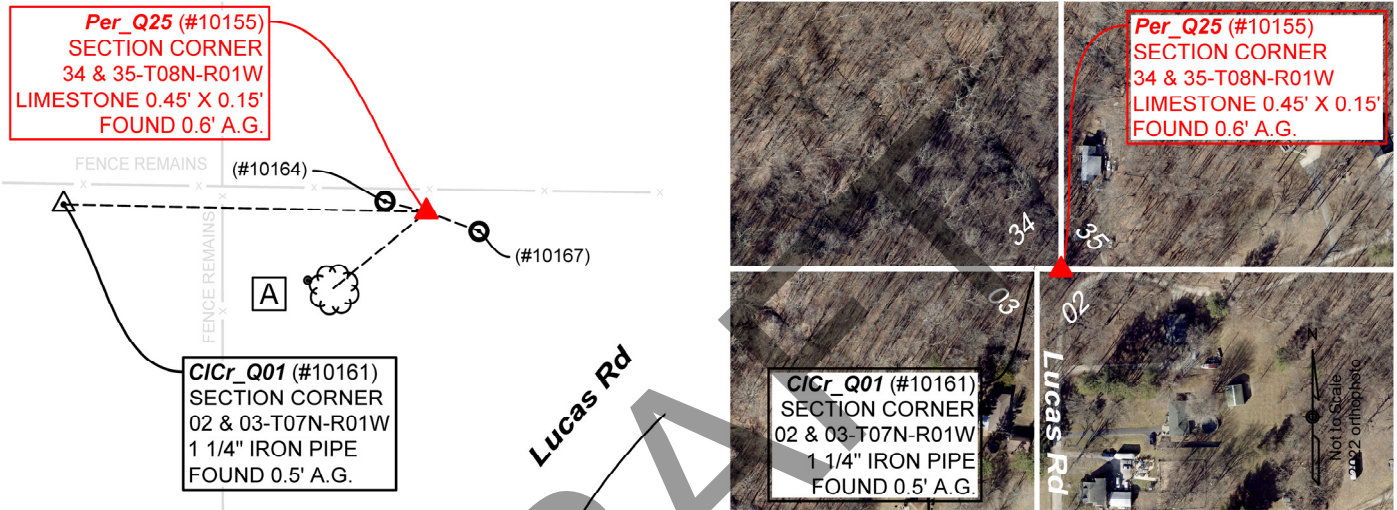
**Section Corner**

Sections 34 & 35- T08N-R01W, 2nd P.M.  
Perry Township, Monroe County, Indiana

|  |  |
|--|--|
| Section 34<br>T08N-R01W<br>Perry       | Section 35<br>T08N-R01W<br>Perry       |
| Section 03<br>T07N-R01W<br>Clear Creek | Section 02<br>T07N-R01W<br>Clear Creek |

**MONUMENT:** Describe monument set or found (Include material type, scribing, distance above/below grade, dimensions.)  
Found 0.45 x 0.15' Limestone with faint "+" on west side 0.6' above grade.

**MONUMENT LOCATION SKETCH:**



**WITNESS MONUMENT TIES**

All ties to new Bearing Trees (BTs) are a mag nail set in a 1-1/2" plastic washer stamped "SURVEY MARKER - DO NOT REMOVE" and hack mark at the root crown (less than 12" above ground) perpendicular to the center of the tree, unless otherwise noted. BT diameters are noted as dbh and are measured approximately 4.5' above ground. Bearings are measured from the monument to the center of the BT, distances are measured from the monument to the mag nail.

| ID        | BEARING | DISTANCE | DESCRIPTION   |
|-----------|---------|----------|---|
| Witness A | S 50d W | 12.6'    | Set mag nail 0.6' above grade on the northwest side of tree where magnetic signal was found on 9" Hackberry Tree as noted in Field Book 51 Page 40. |

**MONUMENT ACCESSORIES**

Other survey grade monuments that were located in the vicinity and their relation to the monument.

|          |               |        |   |
|----------|---------------|--------|---|
| (#10161) | N 88d48'32" W | 37.78' | Found 1 1/4" Iron Pipe 0.5' above grade as per Witness E 2007 monument record.    |
| (#10164) | N 75d52'12" W | 4.45'  | Found 1 1/4" Iron Pipe 0.6' above grade as per Witness B on 2007 monument record. |
| (#10167) | S 70d1'13" E  | 5.81'  | Found 1 1/4" Iron Pipe 0.5' above grade as per Witness C on 2007 monument record. |



**OFFICE OF THE MONROE COUNTY SURVEYOR • Trohn Enright-Randolph**

119 W 7th Street, Bloomington, IN 47404 • 812-349-2570 • surveyoroffice@co.monroe.in.us



**PENDING**

**MONUMENT RECORD**

Corner ID: **Per\_Q25**

**Section Corner**

Sections 34 & 35- T08N-R01W, 2nd P.M.  
Perry Township, Monroe County, Indiana

|  |  |
|--|--|
| Section 34<br>T08N-R01W<br>Perry       | Section 35<br>T08N-R01W<br>Perry       |
| Section 03<br>T07N-R01W<br>Clear Creek | Section 02<br>T07N-R01W<br>Clear Creek |

**PHOTO IDENTIFIED:** Photo Date: 8/15/2022



Photo Orientation & Description: Looking north at Per\_Q25



Photo Orientation & Description: Looking at Per\_Q25 from above

**ORIGINAL OR SUBSEQUENT SURVEY EVIDENCE FOUND:** Include, search area or areas, search procedure, etc.

Date of Field work/Search: 8/15/2022 By: JG & HJ Monument Found: Limestone BTs or Reference Objects Found: Found Witnesses B, C, D & E from 2007 monument record Project #: CICr2018 Field Book: 51/40 & 54/79 Equipment: The basis of bearings is Grid North System NAD83(2011)/Indiana West NAVD 88, Epoch 2010.0000, geoid12b\_conus.db3, US Survey Feet, derived from GPS observations utilizing the Indiana Real-Time Network (INCORS). Coordinate data was collected with a Javad Triumph LS Network Rover. Coordinates are available upon request. Distances to witness ties were collected with a Leica Disto laser distance meter. Bearings to witness ties were collected with the internal magnetic compass of the Javad Triumph LS and were automatically adjusted to grid north and are approximately shown hereon for reference. Priority should be given to provided distances over bearings. Notes: All witness photos on file in the Monroe County Surveyors Office.

**OTHER EVIDENCE:** Describe corner location relative to nearby features and how to reach the corner location – note fences, roads, timber cutting lines, mow lines, clearings, plantings, streams, topo changes, etc.

Monument is located off of the west side of Lucas Road in a wooded area. "Protect Nearby Survey Markers" sign can be seen from road. Per\_Q25 is an offset monument for CICr\_Q01. Each can be seen easily from the other.

**MONUMENT PRESERVATION:** Describe work done to preserve existing monument.

Geodetic controls were captured for the monument and for three of it's witnesses. The stone was painted. A new sign was hung on conduits at 4.5' above grade.

**THEORY OF LOCATION:** Describe the theory of location for acceptance of this monument. Include monument origin and associated uncertainty.

The stone was previously witnessed by the Monroe County Surveyor, Kevin Enright, on May 31, 2000 and accepted by the Monroe County Surveyor Review Board on October 9, 2007. A Monroe County Surveyor's Office field crew visited the site on March 16, 2018. Most of the witnesses included here were established then. Measurements, distances and bearings were verified in 2022. The 2007 Monument Record accepted the Limestone per a legal description survey for Stella Chasteen by Lee Utt, recorded as Instrument Number 00301791.IN and a Richard E. Waltrip survey, Red Oak Estates Subdivision (1995) on file at the Recorder's Office as 00516573.IN. Other References on File: survey by Eric Deckard, Jane Rezvan Boundary Survey (2007), on file at the Recorder's Office as 2007021909.IN, a survey by Charles D. Graham, Fields/Lucas Minor Subdivision (2021), on file at the Recorder's Office as 2021009420.IN and a survey by Todd M. Borgman, Crase-Lucas Road Boundary Survey (2023), on file at the Recorder's Office as 2023001351.IN. Final Plat. Historic research has not yet been performed to prove the validity of this monument.

**CERTIFICATION:**



**OFFICE OF THE MONROE COUNTY SURVEYOR • Trohn Enright-Randolph**

119 W 7th Street, Bloomington, IN 47404 • 812-349-2570 • surveyoroffice@co.monroe.in.us

MONUMENT RECORD  
State of Indiana - County of Monroe

Section: 35

Township: 8 North

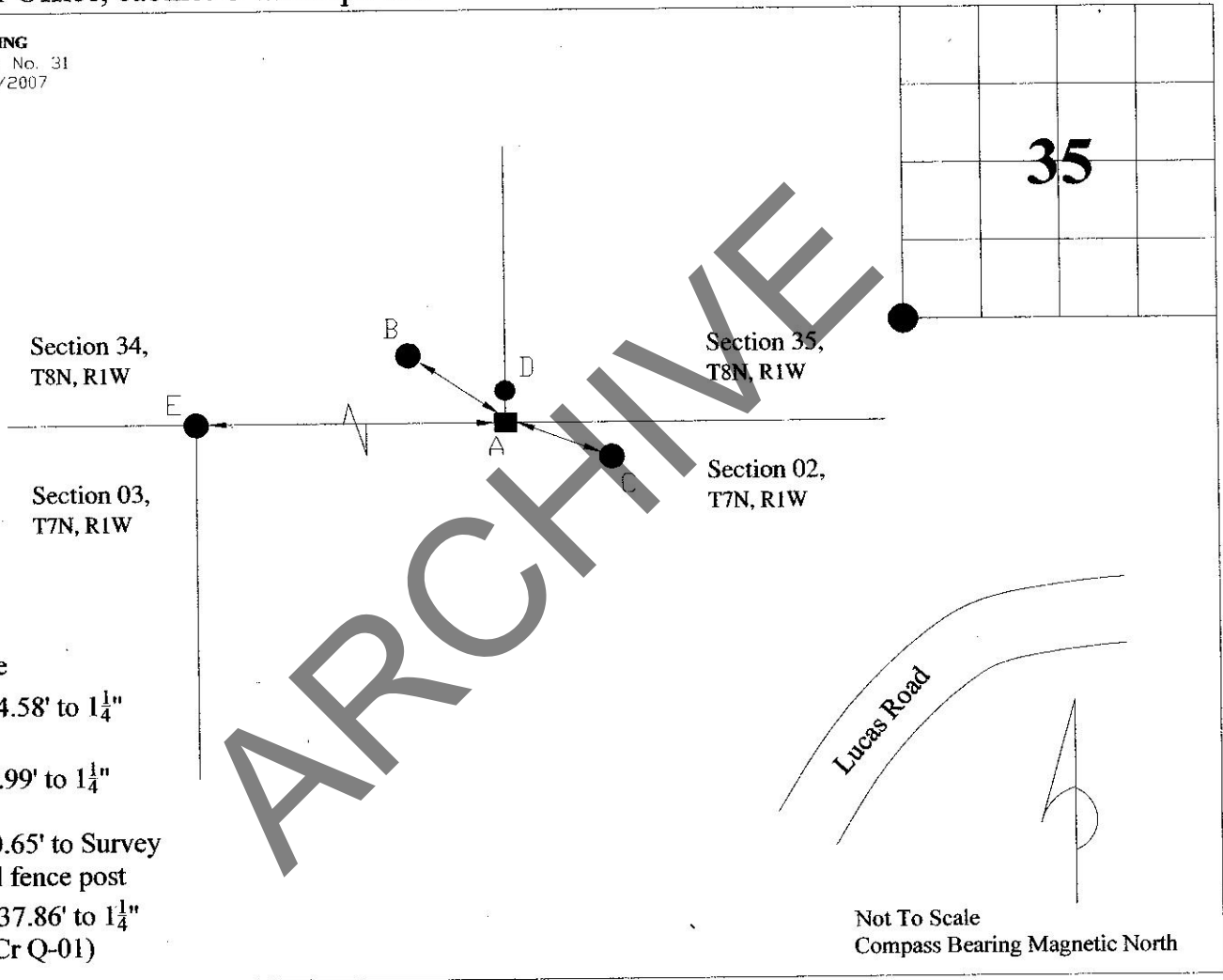
Range: 1 West

Corner ID: Per Q-25

**Monument Description & Remarks:** Limestone, length 0.44ft, width 0.15ft, height 0.45ft.  
Survey Sign 5ft above ground at pt. D

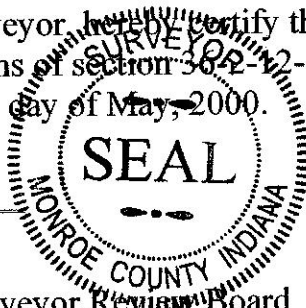
**References On File:** Lee Utt legal description survey, Stella Chasteen (1992), on file in Surveyor Office; Richard E. Waltrip survey, Red Oak Estates Subdivision (1995), on file in Recorder Office, cabinet C envelope 158

RECOVERY TIE DRAWING  
Field Book 32 Page No. 31  
Perpetuated: 9/23/2007



I, Kevin P. Enright, Monroe County Surveyor, hereby certify that this document was prepared under my direction in accordance with the provisions of section 36-2-11 of the Indiana Code; and the above data is given under my hand and seal this 31st day of May, 2000.

*Kevin P. Enright*



Administered by the Monroe County Surveyor Review Board

Date: 10/9/2007

**PENDING**

**MONUMENT RECORD**

Corner ID: **CICr\_Q01**

**Quarter Corner**

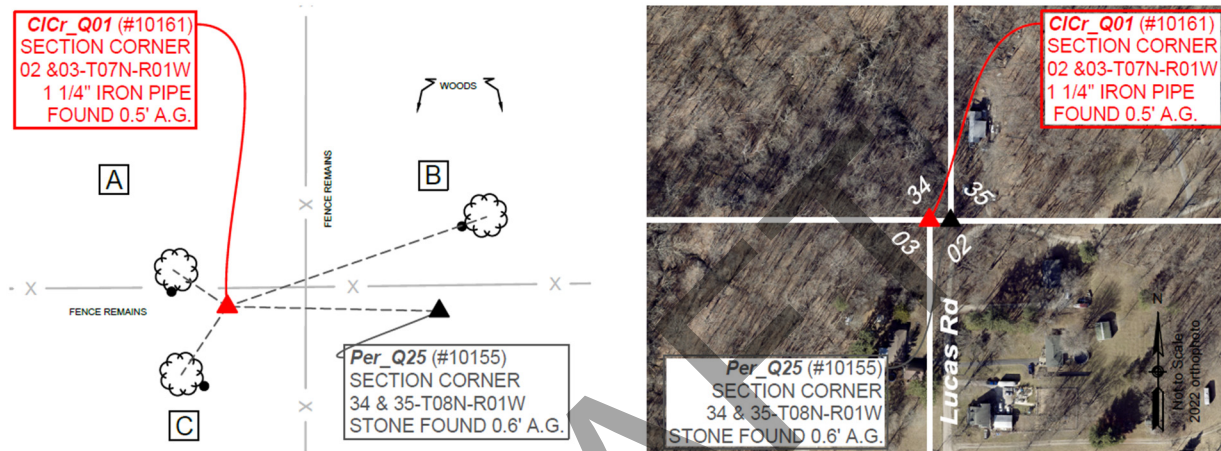
**Sections 02 & 03- T07N-R01W, 2nd P.M.**

**Clear Creek Township, Monroe County, Indiana**

|  |  |
|--|--|
| Section 34<br>T08N-R01W<br>Perry       | Section 35<br>T08N-R01W<br>Perry       |
| Section 03<br>T07N-R01W<br>Clear Creek | Section 02<br>T07N-R01W<br>Clear Creek |

**MONUMENT:** Describe monument set or found (Include material type, scribing, distance above/below grade, dimensions.)  
 1 1/4" Iron Pipe found 0.5' above grade.

**MONUMENT LOCATION SKETCH:**



**WITNESS MONUMENT TIES**

All ties to new Bearing Trees (BTs) are a mag nail set in a 1-1/2" plastic washer stamped "SURVEY MARKER - DO NOT REMOVE" and hack mark at the root crown (less than 12" above ground) perpendicular to the center of the tree, unless otherwise noted. BT diameters are noted as dbh and are measured approximately 4.5' above ground. Bearings are measured from the monument to the center of the BT, distances are measured from the monument to the mag nail.

| ID        | BEARING | DISTANCE | DESCRIPTION  |
|-----------|---------|----------|--|
| Witness A | S 70d E | 33.4'    | Set mag nail 0.6' above grade on the northwest side of 9" Hackberry Tree. Found magnetic signal 0.6' above grade on the northwest side of 9" hackberry tree as noted in Field Book 51 Page 40. |
| Witness B | N 71d E | 48.8'    | Found mag nail and spinner in hack 0.2' above grade on southwest side of 6" Red Maple Tree as noted in Field Book 51 Page 40. Distance to center of tree.                                      |
| Witness C | S 34d W | 14.6'    | Found mag nail and spinner 0.9' above grade on southeast side of 22" Mockernut Hickory Tree as noted in Field Book 51 Page 40.   |

**MONUMENT ACCESSORIES**

Other survey grade monuments that were located in the vicinity and their relation to the monument.

|          |               |        |  |
|----------|---------------|--------|--|
| (#10155) | S 88d48'32" E | 37.78' | Found Limestone 0.45' X 0.15' with faint cut "+" 0.6' above grade as per 2007 monument record. Found signal of magnet buried beneath it as noted in Field Book 51 Page 40. |
|----------|---------------|--------|--|



**OFFICE OF THE MONROE COUNTY SURVEYOR • Trohn Enright-Randolph**

501 N Morton St. Ste 205, Bloomington, IN 47404 • 812-349-2570 • surveyoroffice@co.monroe.in.us



**PENDING**

**MONUMENT RECORD**

Corner ID: **CICr\_Q01**

**Quarter Corner**

**Sections 02 & 03- T07N-R01W, 2nd P.M.  
Clear Creek Township, Monroe County, Indiana**

|  |  |
|--|--|
| Section 34<br>T08N-R01W<br>Perry       | Section 35<br>T08N-R01W<br>Perry       |
| Section 03<br>T07N-R01W<br>Clear Creek | Section 02<br>T07N-R01W<br>Clear Creek |

**PHOTO IDENTIFIED:** Photo Date: 8/15/2022



Photo Orientation & Description: Looking at the side of CICr\_Q01



Photo Orientation & Description: Looking west at CICr\_Q01

**ORIGINAL OR SUBSEQUENT SURVEY EVIDENCE FOUND:** *Include, search area or areas, search procedure, etc.*  
 Date of Field work/Search: 8/15/2022 from work performed 3/16/2018 By: HJ & JG Monument Found: 1 1/4" Iron Pipe BTs  
 or Reference Objects Found: Found C & D from 2007 monument record. Witness B was obliterated. Project #: CICr2018  
 Field Books: 51/40 & 54/79 Equipment: The basis of bearings is Grid North System NAD83(2011)/Indiana West NAVD  
 88, Epoch 2010.0000, geoid12b\_conus.db3, US Survey Feet, derived from GPS observations utilizing the Indiana  
 Real-Time Network (INCORS). Coordinate data was collected with a Javad Triumph LS Network Rover. Coordinates  
 are available upon request. Distances to witness ties were measured with 100' measuring tape. Bearings to witness  
 ties were collected with the internal magnetic compass of the Javad Triumph LS, verified with RTK solutions and  
 were automatically adjusted to grid north and are approximately shown hereon for reference. Priority should be given  
 to provided distances over bearings. Notes: All witness photos on file in the Monroe County Surveyors Office.

**OTHER EVIDENCE:** *Describe corner location relative to nearby features and how to reach the corner location – note fences, roads, timber cutting lines, mow lines, clearings, plantings, streams, topo changes, etc.*

Monument is located on the west side of Lucas Road, in a wooded area. There are some fallen branches and remains of barbed wire from a fence within the pathway to the monument. A "Protect Nearby Survey Markers" sign was found +/- 13' southwest of the monument. CICr\_Q01 is an offset corner with Per\_Q25. Per\_Q25's "Protect Nearby Survey Markers" sign can be seen from the road. Notes: All witness photos on file in the Monroe County Surveyors Office.

**MONUMENT PRESERVATION:** *Describe work done to preserve existing monument.*

New witnesses were established, and geodetic controls were captured for the monument and the other iron pipes that were in the area.

**THEORY OF LOCATION:** *Describe the theory of location for acceptance of this monument. Include monument origin and associated uncertainty.*

The iron pipe was previously witnessed by the Monroe County Surveyor, Kevin Enright, on May 31, 2000 and accepted by the Monroe County Surveyor Review Board on October 9, 2007. A Monroe County Surveyor's Office field crew visited the site on March 16, 2018. Most of the witnesses included here were established then.

Measurements, distances and bearings were verified in 2022.

The 2007 Monument Record accepted the iron pipe per a legal description survey for Stella Chasteen (1992) by Lee Utt recorded as Instrument Number 00301791.IN, a Richard E. Waltrip survey, Red Oak Estates Subdivision (1995) on file at the Recorder's Office as 00516573.IN. References on File: survey by Christopher Porter, Henegar Minor Subdivision (2021), on file at the Recorder's Office as 2021011744.IN and Todd M. Borgman survey, Crase-Lucas



**OFFICE OF THE MONROE COUNTY SURVEYOR • Trohn Enright-Randolph**

501 N Morton St. Ste 205, Bloomington, IN 47404 • 812-349-2570 • surveyoroffice@co.monroe.in.us

**PENDING**

**MONUMENT RECORD**

Corner ID: **CICr\_Q01**

**Quarter Corner**

**Sections 02 & 03- T07N-R01W, 2nd P.M.**

**Clear Creek Township, Monroe County, Indiana**

|   |   |
|---|---|
| Section 34<br>T08N-R01W<br><i>Perry</i>       | Section 35<br>T08N-R01W<br><i>Perry</i>       |
| Section 03<br>T07N-R01W<br><i>Clear Creek</i> | Section 02<br>T07N-R01W<br><i>Clear Creek</i> |

Road Boundary Survey (2023), on file at the Recorder's Office as 2023001351.IN. Historic research has not yet been performed to prove the validity of this monument.

**CERTIFICATIONS:**

DRAFT



**OFFICE OF THE MONROE COUNTY SURVEYOR • Trohn Enright-Randolph**

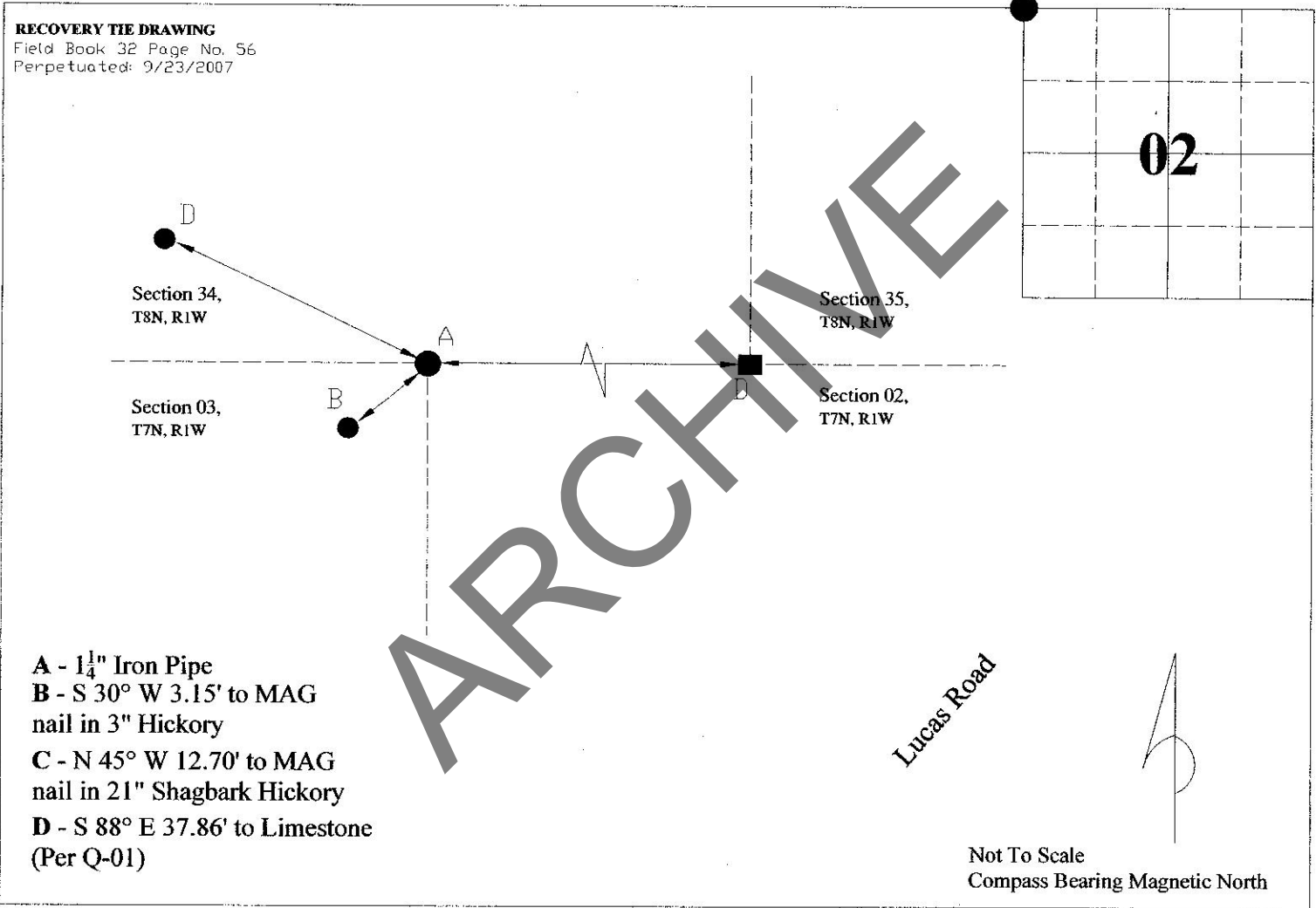
501 N Morton St. Ste 205, Bloomington, IN 47404 • 812-349-2570 • surveyoroffice@co.monroe.in.us

**MONUMENT RECORD**  
State of Indiana - County of Monroe

**Section:** 2      **Township:** 8 North      **Range:** 1 West      **Corner ID:** ClCr Q-01

**Monument Description & Remarks:** 1 1/4" Iron Pipe 8" out of ground. Survey Sign 5ft above at pt. B

**References On File:** Lee Utt legal description survey, Stella Chasteen (1992), on file in Surveyor Office; Richard E. Waltrip survey, Red Oak Estates Subdivision (1995), on file in Recorder Office, cabinet C envelope 158



I, Kevin P. Enright, Monroe County Surveyor, hereby certify that this document was prepared under my direction in accordance with the provisions of section 36-2-12-11 of the Indiana Code; and the above data is given under my hand and seal this 31st day of May, 2007.

*Kevin P. Enright*



Administered by the Monroe County Surveyor Review Board

Date: 10/9/2007



**PENDING**

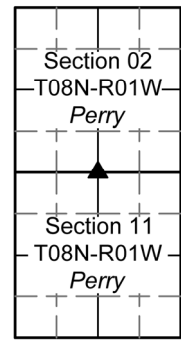
**MONUMENT RECORD**

Corner ID: **Per\_S05**

**Quarter Corner**

Sections 02 & 11- T08N-R01W, 2nd P.M.

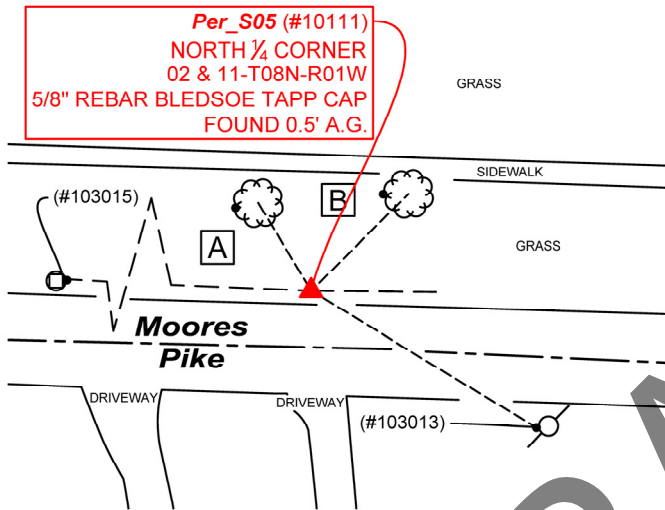
Perry Township, Monroe County, Indiana



**MONUMENT:** Describe monument set or found (Include material type, scribing, distance above/below grade, dimensions.)

Found 5/8" Rebar weathered yellow cap reading "BLEDSOE TAPP PC 50920004" 0.5' above grade approximately 2' north of Moores Pike.

**MONUMENT LOCATION SKETCH:**



**WITNESS MONUMENT TIES**

All ties to new Bearing Trees (BTs) are a mag nail set in a 1-1/2" plastic washer stamped "SURVEY MARKER - DO NOT REMOVE" and hack mark at the root crown (less than 12" above ground) perpendicular to the center of the tree, unless otherwise noted. BT diameters are noted as dbh and are measured approximately 4.5' above ground. Bearings are measured from the monument to the center of the BT, distances are measured from the monument to the mag nail.

| ID  | BEARING       | DISTANCE | DESCRIPTION  |
|---|---------------|----------|--|
| Witness A   | N 31d W       | 26.8'    | Mag nail and washer set in hack 0.9' above grade on the west side of a 24" Sugar Maple tree. |
| Witness B   | N 45d E       | 36.1'    | Mag nail and washer set in hack 0.8' above grade on the west side of a 18" Sugar Maple tree. |
| <i>Other survey grade monuments that were located in the vicinity and their relation to the monument.</i> |               |          |  |
| (#103013)   | S 58d30'17" E | 69.00'   | Mag nail and washer set 0.5' above grade on the west side of 13" power line pole.            |
| (#103015)   | N 87d14'5" W  | 133.57'  | Mag nail and washer set 0.2' above grade on the east side of a 9" post 4.4' in height.       |
| (#10100)  | N 89d19'25" W | 2640.56  | Section Corner <b>Per_Q05</b> 1" Iron Pin found (2019) in monument box.                      |
| (#10409)  | S 89d22'43" E | 2639.69' | Section Corner <b>Per_U05</b> 1" Iron Pipe found (2019) 0.2' below grade.                    |



**OFFICE OF THE MONROE COUNTY SURVEYOR • Trohn Enright-Randolph**

119 W 7th Street, Bloomington, IN 47404 • 812-349-2570 • surveyoroffice@co.monroe.in.us

**PENDING**

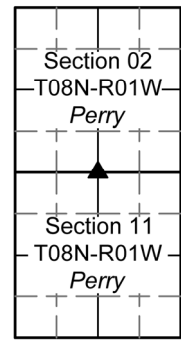
**MONUMENT RECORD**

Corner ID: **Per\_S05**

**Quarter Corner**

Sections 02 & 11- T08N-R01W, 2nd P.M.

Perry Township, Monroe County, Indiana



**PHOTO IDENTIFIED:** Photo Date: 8/08/2022



Photo Orientation & Description: Per\_S05 from above



Photo Orientation & Description: Looking east at Per\_S05

**ORIGINAL OR SUBSEQUENT SURVEY EVIDENCE FOUND:** *Include, search area or areas, search procedure, etc.*

Date of Field work/Search: 08/08/2022 By: JG & HJ Monument Found: Rebar with Cap BTs or Reference Objects Found: N/A Project #: Perry Preservation and Restoration Field Book: 54/75 Equipment: The basis of bearings is Grid North System NAD83(2011)/Indiana West NAVD 88, Epoch 2010.0000, geoid12b\_conus.db3, US Survey Feet, derived from GPS observations utilizing the Indiana Real-Time Network (INCORS). Coordinate data was collected with a Javad Triumph LS Network Rover. Coordinates are available upon request. Distances to witness ties were collected with a Leica Disto laser distance meter and 100' foot measuring tape. Bearings to witness ties were collected with the internal magnetic compass of the Javad Triumph LS and were automatically adjusted to grid north and are approximately shown hereon for reference. Priority should be given to provided distances over bearings. Notes: All witness photos on file in the Monroe County Surveyors Office.

**OTHER EVIDENCE:** *Describe corner location relative to nearby features and how to reach the corner location – note fences, roads, timber cutting lines, mow lines, clearings, plantings, streams, topo changes, etc.*

Rebar found 5" west of a mailbox for 3230 East Moores Pike. The best staging area is the southwestern most cul-de-sac for The Fields apartment complex which can be accessed going east from Clarizz Boulevard onto Covenanter Drive and then taking the first right (south).

**MONUMENT PRESERVATION:** *Describe work done to preserve existing monument.*

All witnesses were established. Geodetic controls were captured for the monument, neighboring Perry\_U05, Witnesses (#103013) & (#103015)

**THEORY OF LOCATION:** *Describe the theory of location for acceptance of this monument. Include monument origin and associated uncertainty.*

It is believed that the rebar was set in an unrecorded survey by Phillip O. Tapp, Brummett Trust (2001), on file at the Surveyor's Office as RSID004969. Despite a couple of scrivener's errors: 1) In calling Per\_S05 the Northeast corner of the Northeast ¼ rather than the Northwest corner of the Northeast ¼ (or the Northeast corner of the Northwest ¼) and 2) Describing the grade of the monument as set flush rather than it's found grade (0.5' above grade); this rebar functions as a near midpoint between neighboring corners Per\_Q05 & Per\_U05. In 2020, licensed surveyor Todd M. Borgman held the corner, Boundary Survey for 3333 Moores Pike (2020), on file at the Recorder's Office as 2020003609.IN. Historic research has not yet been performed to prove the validity of this monument.



**OFFICE OF THE MONROE COUNTY SURVEYOR • Trohn Enright-Randolph**

119 W 7th Street, Bloomington, IN 47404 • 812-349-2570 • surveyoroffice@co.monroe.in.us



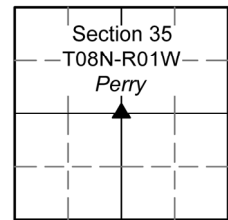
**PENDING**

**MONUMENT RECORD**

Corner ID: **Per\_S23**

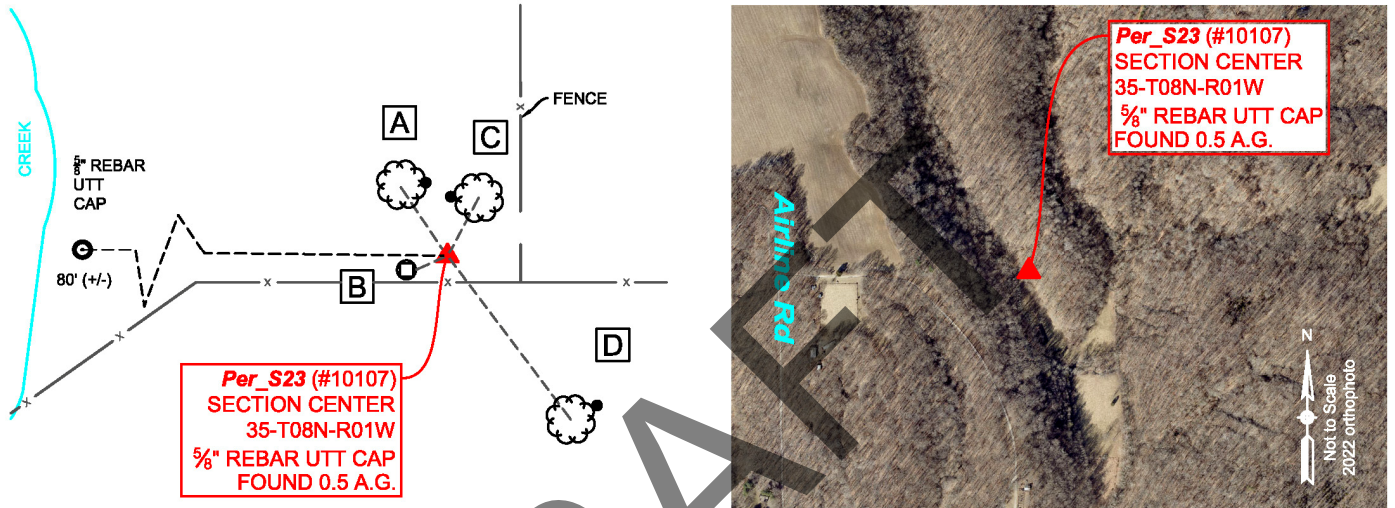
**Section Center**

Section 35- T08N-R01W, 2nd P.M.  
Perry Township, Monroe County, Indiana



**MONUMENT:** Describe monument set or found (Include material type, scribing, distance above/below grade, dimensions.)  
5/8" Rebar with mangled yellow plastic cap stamped "UTT S-0089" 0.5' above grade 3" south of 3" PVC pipe.

**MONUMENT LOCATION SKETCH:**



**WITNESS MONUMENT TIES**

All ties to new Bearing Trees (BTs) are a mag nail set in a 1-1/2" plastic washer stamped "SURVEY MARKER - DO NOT REMOVE" and hack mark at the root crown (less than 12" above ground) perpendicular to the center of the tree, unless otherwise noted. BT diameters are noted as dbh and are measured approximately 4.5' above ground. Bearings are measured from the monument to the center of the BT, distances are measured from the monument to the mag nail.

| ID        | BEARING | DISTANCE | DESCRIPTION   |
|-----------|---------|----------|---|
| Witness A | N 34d W | 13.2'    | Set mag nail and washer in hack 0.3' above grade on the east side of 3" American Beech Tree   |
| Witness B | S 66d W | 5.4'     | Found "Protect Nearby Survey Markers" sign on metal fence post as per Witness B on 2009 monument record. Set new sign on T post.                                    |
| Witness C | N 28d E | 10.5'    | Set mag nail and washer in hack 0.7' above grade on west side 12" Sugar Maple Tree over found magnetic signal. As per Witness C on 2009 monument record.            |
| Witness D | S 37d E | 32.3'    | Set mag nail and washer in hack 0.2' above grade on northeast side of 19" Pignut Hickory Tree over found magnetic signal. As per Witness D on 2009 monument record. |



**OFFICE OF THE MONROE COUNTY SURVEYOR • Trohn Enright-Randolph**

119 W 7th Street, Bloomington, IN 47404 • 812-349-2570 • surveyoroffice@co.monroe.in.us

**PENDING**

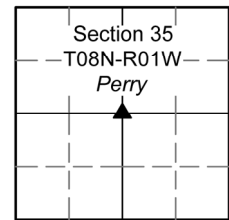
**MONUMENT RECORD**

Corner ID: **Per\_S23**

**Section Center**

Section 35- T08N-R01W, 2nd P.M.

Perry Township, Monroe County, Indiana



**PHOTO IDENTIFIED:** Photo Date: 8/08/2022



Photo Orientation & Description: Looking at Per\_S23 from above



Photo Orientation & Description: Looking northeast at Per\_S23

**ORIGINAL OR SUBSEQUENT SURVEY EVIDENCE FOUND:** Include, search area or areas, search procedure, etc.

Date of Field work/Search: 8/08/2022 By: JG & HJ Monument Found: Rebar with Utt cap BTs or Reference Objects Found: Found all witnesses from 2008 monument record. Project #: Perry Preservation & Restoration Field Book: 54/73 Equipment: The basis of bearings is Grid North System NAD83(2011)/Indiana West NAVD 88, Epoch 2010.0000, geoid12b\_conus.db3, US Survey Feet, derived from GPS observations utilizing the Indiana Real-Time Network (INCORS). Coordinate data was collected with a Javad Triumph LS Network Rover. Coordinates are available upon request. Distances to witness ties were collected with 100' measuring tape. Bearings to witness ties were collected with the internal magnetic compass of the Javad Triumph LS and were automatically adjusted to grid north and are approximately shown hereon for reference. Priority should be given to provided distances over bearings. Notes: All witness photos on file in the Monroe County Surveyors Office.

**OTHER EVIDENCE:** Describe corner location relative to nearby features and how to reach the corner location – note fences, roads, timber cutting lines, mow lines, clearings, plantings, streams, topo changes, etc.

Monument is northwest of two intersecting fences running from the north and terminating and an east/west fence. The monument is at the top of a hill. The PVC can be spotted from the bottom of the hill. There is a precarious road that begins at the southwest side of the residence at 6205 Airline Road and gradually runs east then northwesterly a quarter mile past an abandoned ostrich farm to the foot of the hill where the monument is set.

**MONUMENT PRESERVATION:** Describe work done to preserve existing monument.

Geodetic control was established. A new witness was set.

**THEORY OF LOCATION:** Describe the theory of location for acceptance of this monument. Include monument origin and associated uncertainty.

The rebar was previously witnessed by the Monroe County Surveyor, Kevin Enright, on April 22, 2009 and accepted by the Monroe County Surveyor Review Board on May 21, 2013. The 2013 Monument Record accepted the rebar per a boundary survey by Lee Utt, Delong (1995), on file at Surveyor's Office as RSID002322 and a Phillip Tapp survey, Young Minor Subdivision (2009), on file at the Recorder's Office as 2009008502.IN. References on File: a Todd M. Borgman survey, Morrison Type E Administrative Subdivision Final Plat (2021), on file at the Recorder's Office as 2021019410.IN and an Eric L. Deckard survey, McIntosh Boundary Survey (2022), on file at the Recorder's Office as 2022010562.IN. Historic research has not yet been performed to prove the validity of this monument.

**CERTIFICATION:**



**OFFICE OF THE MONROE COUNTY SURVEYOR • Trohn Enright-Randolph**

119 W 7th Street, Bloomington, IN 47404 • 812-349-2570 • surveyoroffice@co.monroe.in.us

**MONUMENT RECORD**  
**State of Indiana - County of Monroe**

**Section:** 35

**Township:** 08 North

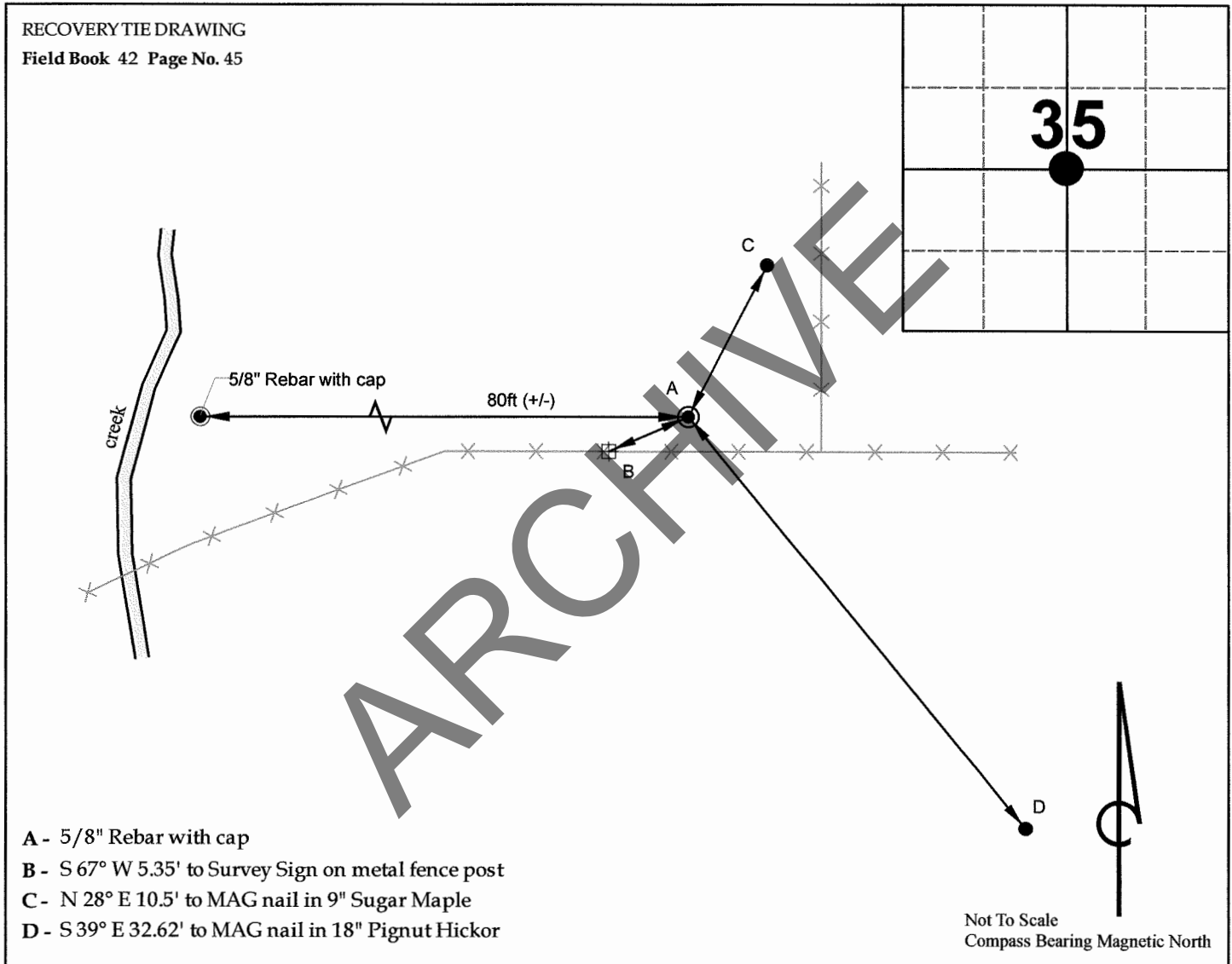
**Range:** 01 West

**Corner ID:** Per S-23

**Monument Description & Remarks:** 5/8" Rebar with cap, "UTT".

Survey Sign 5ft above ground at point B

**References On File:** Lee Utt survey, John Delony (1995), and Phil Tapp survey, Young Minor Subdivision (2009), on file in Surveyor Office



I, Kevin P. Enright, Monroe County Surveyor, hereby certify that this document was prepared under my direction in accordance with the provisions of section 36-2-12-11 of the Indiana Code; and the above data is given under my hand and seal this 22nd day of April, 2009.

*Kevin P. Enright*

Administered by the Monroe County Surveyor Review Board

5-21-2013



Drawn by: T.E.R. Entry date: May 15, 2013



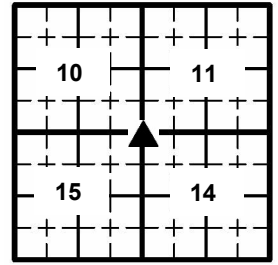
**PENDING**

**MONUMENT RECORD**

Corner ID: **InCr\_Q09**

**Section Corner**

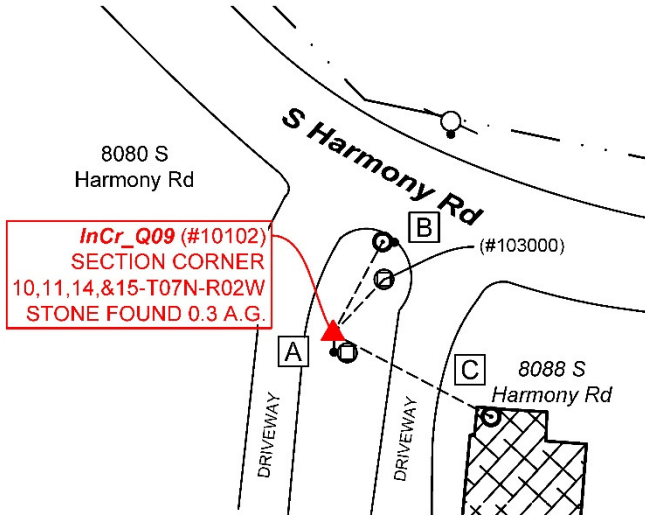
Sections 10, 11, 14, & 15- T07N-R02W, 2nd P.M.  
Indian Creek Township, Monroe County, Indiana



**MONUMENT:** Describe monument set or found (Include material type, scribing, distance above/below grade, dimensions.)

Found 8" X 5" Sandstone firmly in ground 0.3' above grade. Stone has spine that stretches north to south.

**MONUMENT LOCATION SKETCH:**



| WITNESS MONUMENT TIES  |         |          |   |
|--|---------|----------|---|
| All ties to new Bearing Trees (BTs) are a mag nail set in a 1-1/2" plastic washer stamped "SURVEY MARKER - DO NOT REMOVE" and hack mark at the root crown (less than 12" above ground) perpendicular to the center of the tree, unless otherwise noted. BT diameters are noted as dbh and are measured approximately 4.5' above ground. Bearings are measured from the monument to the center of the BT, distances are measured from the monument to the mag nail. |         |          |   |
| ID   | BEARING | DISTANCE | DESCRIPTION   |
| Witness A  | S 0d E  | 0.8'     | PK nail found 0.6' above grade on the west side of a leaning 5" wooden corner post as per 1984 monument record. |
| Witness B  | N 28d E | 21.7'    | Mag nail and washer set 0.2' above grade on the east side of the mailbox at 8088 S Harmony Rd.                  |
| Witness C  | S 62d E | 37.2'    | Wooden pillar on the northwest side of the porch at 8088 S Harmony Rd.  |
| (#103000)  | N 43d E | 15.5'    | Irregular shaped limestone flush and firm in ground 1.7' x 0.4'. Coordinates gathered at center of stone.       |



**OFFICE OF THE MONROE COUNTY SURVEYOR • Trohn Enright-Randolph**

119 W 7th Street, Bloomington, IN 47404 • 812-349-2570 • surveyorsoffice@co.monroe.in.us



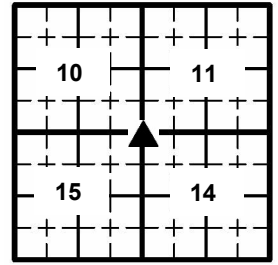
**PENDING**

**MONUMENT RECORD**

Corner ID: **InCr\_Q09**

**Section Corner**

Sections 10, 11, 14, & 15- T07N-R02W, 2nd P.M.  
Indian Creek Township, Monroe County, Indiana



**PHOTO IDENTIFIED:** Photo Date: 06/10/2022



Photo Orientation & Description: InCr\_Q09 from above



Photo Orientation & Description: InCr\_Q09 from north

**ORIGINAL OR SUBSEQUENT SURVEY EVIDENCE FOUND:** *Include, search area or areas, search procedure, etc.*

*Date of Field work/Search:* 06/04/2020, 06/16/2020, 05/16/2022 & 06/10/2022 *By:* CAR, TER, JG, HJ *Monument Found:* Stone *BTs or Reference Objects Found:* Found mag nail in 5" fence post. Witness A herein. Found PK nail in powerline pole. The shagbark hickory tree was gone. Found "Protect Nearby Survey Markers" sign. *Project #:* Stones2020 & Van Buren Preservation Project *Field Book:* 54/6, 7 *Equipment:* Coordinate data was collected with a Javad Triumph LS Network Rover. The basis of bearings is Grid North NAD83(2011), Indiana West Zone, Epoch 2010.0000, Geoid Model G2012BU7, Datum NAD83\_NO\_TRANS, US Survey Feet, derived from GPS observations utilizing the Indiana Real-Time Network (INCORS). Distances obtained with GPS have not been adjusted to ground. Coordinates are available upon request. *Notes:* Returned for a second time to add the second "Protect Nearby Survey Marker" sign across the street on Rockport Rd.

**OTHER EVIDENCE:** *Describe corner location relative to nearby features and how to reach the corner location – note fences, roads, timber cutting lines, mow lines, clearings, plantings, streams, topo changes, etc.*

The monument is at the north end of a line of shrubbery between 8080 & 8088 S. Harmony Rd. Its proximity to Witness A is the best means of locating the monument. Sign set in 2011 field inspection was still attached but covered by vegetation.

**MONUMENT PRESERVATION:** *Describe work done to preserve existing monument.*

A new sign was set on the north side of S Harmony Rd. Geodetic controls were captured for the monument and Witness (#103000). Three new witnesses were established. Shrubby around stone was cleared and monument was painted orange after testing it's acidity. Witness (#103000) was painted pink.

**THEORY OF LOCATION:** *Describe the theory of location for acceptance of this monument. Include monument origin and associated uncertainty.*

The stone was previously witnessed by the Monroe County Surveyor, Edmund O. Farkas, on May 18, 1984.

References on File: Douglas R. Curry survey, Survey for Bolin 17.84 Acres & 11.67 Acres (2005), on file at the Recorder's Office as 2005005710.IN and a Bernard Guerrettaz survey, Davis Parcels 1 & 2 Rockport Rd (2021), on file at the Recorder's Office as 2021016307.IN. It is believed the Guerrettaz survey contains a scrivener's error wherein InCr\_Q09 is identified as the "NW CORNER NE SEC." However, other information from this survey; street placement, building dimensions and distance and bearings from InCr\_R09, leaves little doubt that Mr. Guerrettaz was referring to the NW CORNER **NW SEC.**

And finally a survey by Andrew E. Wilken, Monroe Fire Protection District Type "E" Administrative Subdivision (2019), where he states: "This stone is believed to have been set in a survey by Quincy Short dated April 18<sup>th</sup>-20<sup>th</sup>, 1904 as found in Legal Survey Book 3, pages 1 and 2." Mr. Wilken's survey is on file at the Recorder's Office as 2019009100.IN.

Historic research has not yet been performed to prove the validity of this monument.

**CERTIFICATION:**



**OFFICE OF THE MONROE COUNTY SURVEYOR • Trohn Enright-Randolph**

119 W 7th Street, Bloomington, IN 47404 • 812-349-2570 • surveyoroffice@co.monroe.in.us

CORNER I.D.  
Q - 9

MONUMENT RECORD

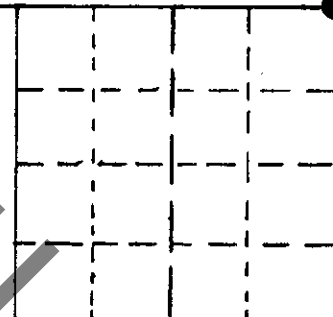
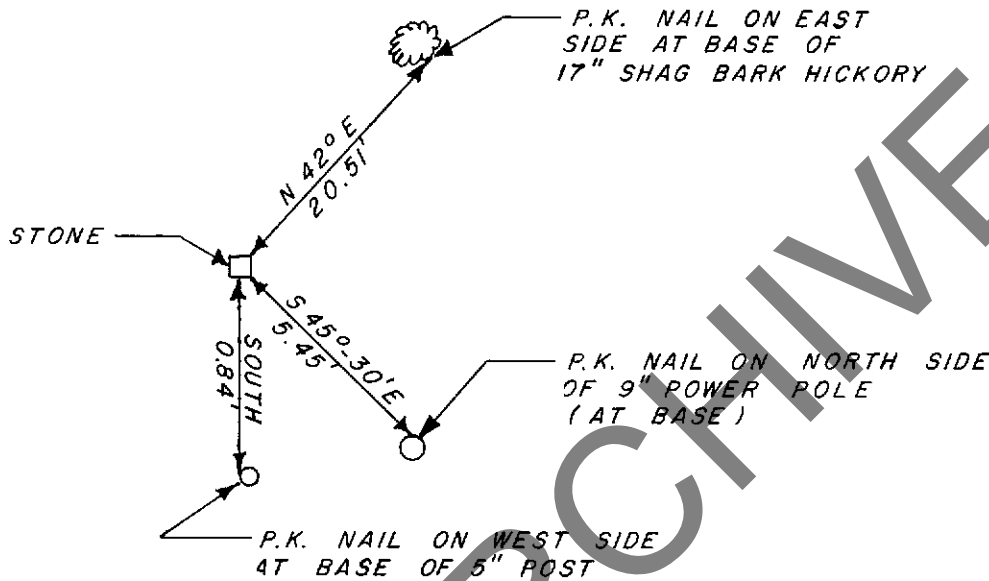
STATE OF INDIANA - COUNTY OF MONROE

SECTION 15, TOWNSHIP 7 NORTH, RANGE 2 WEST

MONUMENT DESCRIPTION & REMARKS

FOUND STONE AT THE NORTHEAST CORNER OF SEC - 15 NO "X" CHISLED  
IN STONE, STONE IS SOLID IN GROUND 0.60' LONG X 0.40' WIDE X  
0.30' HIGH STONE IS MARKED BY A 5" FENCE POST (NO FENCE)

RECOVERY TIE DRAWING



(●) AT CORNER



NOT TO SCALE

STATE OF INDIANA  
COUNTY OF MONROE

I, EDMUND O FARKAS HEREBY CERTIFY THAT THIS DOCUMENT WAS PREPARED UNDER MY DIRECTION IN ACCORDANCE WITH THE PROVISIONS OF SECTION 17-3-64-4 - 17-3-64-8 OF THE INDIANA CODE, BEING ACTS OF 1965, CHAPTER 319; AND THE ABOVE DATA IS GIVEN UNDER MY HAND AND SEAL THIS 18 TH DAY OF MAY, 1984 A.D.

SPACE  
RESERVED  
FOR  
RECORDING  
OFFICER.

INDIANA REGISTERED LAND SURVEYOR NO. \_\_\_\_\_

OR \_\_\_\_\_

UNITED STATES GOVERNMENT AGENCY

TOWNSHIP:  
INDIAN  
CREEK  
CORNER I.D.

TITLE

Q - 9