



**AGENDA**  
**SURVEYOR REVIEW BOARD**  
**HYBRID MEETING**  
**Via Microsoft Teams**  
**Tuesday, April 16, 2024**

- I. Call to Order**
- II. Approval of agenda**
- III. Approval of minutes from March 19, 2024**
- IV. New Business**
  - a. Office Update
- V. Certification of corners:**
  - a. Corner Documentation Program: **N/A**
  - b. County Surveyor Perpetuation: **TwpCor\_XVIII\*, BeBl\_A03\*, BeBl\_A05, BeBl\_C01\*, BeBl\_C05, BeBl\_E01\*, BeBl\_E03\* & BeBl\_E05**
  - c. Professional Services Agreement: **N/A**
- VI. Public input**
- VII. Adoption of next meeting date**
- VIII. Adjournment**

*\*Has no previous certification*

**Teams Meeting Information**

[https://teams.microsoft.com/l/meetup-join/19%3ameeting\\_MzRkODI1M2QtMjVjYkYS00NDdjLTk5NjktOGE2Mzg2NWZhNTQx%40thread.v2/0?context=%7b%22id%22%3a%2249a60700-4c0c-4ece-b904-fb92c600e553%22%2c%22oid%22%3a%22db83725f-c48f-476f-8894-d4bb087d29f8%22%7d](https://teams.microsoft.com/l/meetup-join/19%3ameeting_MzRkODI1M2QtMjVjYkYS00NDdjLTk5NjktOGE2Mzg2NWZhNTQx%40thread.v2/0?context=%7b%22id%22%3a%2249a60700-4c0c-4ece-b904-fb92c600e553%22%2c%22oid%22%3a%22db83725f-c48f-476f-8894-d4bb087d29f8%22%7d)

Meeting ID: 247 640 086 109

Passcode: BTv9wR

**Or call in (audio only)**

[+1 872-242-9432,225452587#](tel:+18722429432225452587) United States, Chicago

[Find a local number](#) [Reset PIN](#)

**The meeting is open to the public. Dates are subject to change.**

For additional information, please call the Office of the Monroe County Surveyor at (812) 349-2570.

Anyone who requires an auxiliary aid or service for effective communication, or a modification of policies or procedures to participate in a program, service, or activity of Monroe County, should contact Monroe County Title VI Coordinator, (812) 349-2553, as soon as possible but no later than forty-eight (48) hours before the scheduled event.

Individuals requiring special language services should, if possible, Government Title VI Coordinator at least seventy-two (72) hours prior to the date on which the services will be needed.

**Survey Utility**



**MEETING MINUTES**  
**SURVEYOR REVIEW BOARD**  
**501 N. Morton Ave. Room 211**  
**HYBRID MEETING Via Teams App**  
**Tuesday, March 19, 2024, 4:00 PM**

**MEMBERS PRESENT:** Rachel Oser, Eric Deckard, Todd Borgman

**STAFF:** Trohn Enright-Randolph, Jason George, Mike Sheppard

- I. Call to Order at 4:01 PM by Trohn Enright-Randolph.**
- II. Approval of agenda: Motion to approve by Todd Borgman; second by Eric Deckard. VOTE: AYE (unanimous). Agenda approved.**
- III. Approval of Minutes for February 23, 2024: Trohn noted a minor correction under members presented. Motion to approve by Rachel Oser with condition to change “Deckard” to “Eric Deckard” under “Members Present.”; second by Borgman. VOTE: AYE (unanimous). Minutes approved with correction.**

**IV. New Business**

**a. Office Update**

Trohn noted that there would be a hard stop for the meeting at about 5:15 pm since he had a Plan Commission meeting after this meeting. He asked if there were any questions or updates from the board. None were offered.

**V. Certification of corners:**

- a. Corner Documentation Program: N/A**
- b. County Surveyor Preservation: Per\_Q25, ClCr\_Q01, Per\_S05\*, Per\_S23, InCr\_Q09**
- c. Professional Services Agreement: N/A**

Jason George said a previous crew went out to in 2018 and Hunter and I followed up on there work. He said new mag nails were set and checked to see if the site was about the same, and it was. Michael Sheppard says he checked the offset distance and it was 38.2. Trohn went through the theory of location.

Oser asked if Clear Creek Q01 was officially tied off. She said the tiesheet could say that one of the witnesses is the section corner Clear Creek Q01.

Trohn said when we have Mr. Sheppard’s ties to show you, we’ll will be wanting feedback so we can make sure that we have a good standard process for monument records. Trohn brought up the tie sheet for the offset corner, Clear Creek Q01.

**CICr\_Q01.** Trohn went through the theory of location. There was a discussion about the identification of a tree as a Mockernut Hickory. There was a question regarding a typo and Jason said he could fix that bearing reference. Trohn talked about template designs and how some things are auto populated from Civil 3D on the newer templates.

**Motion by Oser to APPROVE Per\_Q25 with the condition that a note be added to the witness at Clear Creek Q01 in the monument accessory section of the table and a motion to APPROVE CICr\_Q01 with the condition that the monument accessory at Per\_Q25 be called out as Per\_Q25, and that the bearing for Witness A be checked. Second by Deckard.** Trohn said if the bearing looks really off on Witness A we can bring that back to the board.  
**VOTE: AYE (unanimous). Motion carried.**

**Per\_S05.** Jason said this came to our attention through a survey that Mr. Borgman had performed and we learned that the monument had not been certified previously. He said it was a Bledsoe Tap rebar and we asked them for a copy of it and were provided this unrecorded survey. Trohn said this would be the first reference that we have in the Surveyor's Office. He read from the theory of location. Oser had a comment about a typo. Motion to APPROVE by Deckard with an edit to the descriptor of 10-1-1-1; second by Borgman. VOTE: AYE (unanimous). Motion carried.

**Per\_S23.** Trohn said this one was referenced in 2009 by Kevin Enright and the SRB approved it in 2013. Jason said the witnesses were about the same and Witness A was added. Trohn read through the theory of location. Jason said an ostrich farm was in Enright's notes from 2009. Oser said I like when a little bit of local history is preserved in tiesheets.

**Motion to approve Per\_S23. Second by Oser. VOTE: AYE (unanimous).**

**InCr\_Q09.** Jason said this is another one that a previous crew had started but they had found the wrong stone. He said we went out and found the right stone. He said this one worked well with the Farkas tie from 1984; the fence post was right where was shown related to the stone. Trohn said we recovered the same monument that was tied off by Edmund Farkas in 1984. He talked about the theory of location. There was a question about a Guerrettaz survey performed in 2008 but recorded in 2021. There was a discussion of recording documents with signatures more than 12 months old.

Motion to APPROVE with the condition to change the 2021 in the theory of location to 2008. Second by Deckard. VOTE: AYE (unanimous).

- VI. Public input: None**
- VII. Adoption of next meeting date: April 16, 2024**
- VIII. Adjournment. The meeting adjourned at approximately 4:41 PM.**

Approved \_\_\_\_\_

Secretary \_\_\_\_\_



**NOTES:**

- Field work was performed in January thru April of 2024.
- This document is not complete without the associated report of survey.
- Interior quarter-section corners, sixteenth-section corners and corners of minor subdivisions were not evaluated in any way unless shown hereon or specifically discussed in the report of survey. Bearing breaks may exist between section corners and quarter corners that are not shown. Bearings and distances are shown hereon to correlate corners and to assist in corner analysis.
- Basis of Bearings: Unless noted otherwise, the basis of bearings is Grid North NAD83(2011), Indiana West Zone, Epoch 2010.0000, Geoid Model G2012BU7, Datum NAD83\_NO\_TRANS, US Survey Feet, derived from GPS observations utilizing the Indiana Real-Time Network (INCORS). Coordinate data was collected with a Javad Triumph LS Network Rover and/or with a Sokkia Set 510 Total Station radially from points located with GPS. Distances obtained with GPS have not been adjusted to ground. To adjust grid distances to ground distances multiply them by a scale factor of 1) 1.000041208.

**CERTIFICATION:**

I hereby certify that this survey was performed either by me or under my direction. To the best of my knowledge, ability and belief, this survey was executed according to survey requirements in Title 865, Rule 12 of the Indiana Administrative Code.

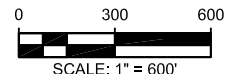
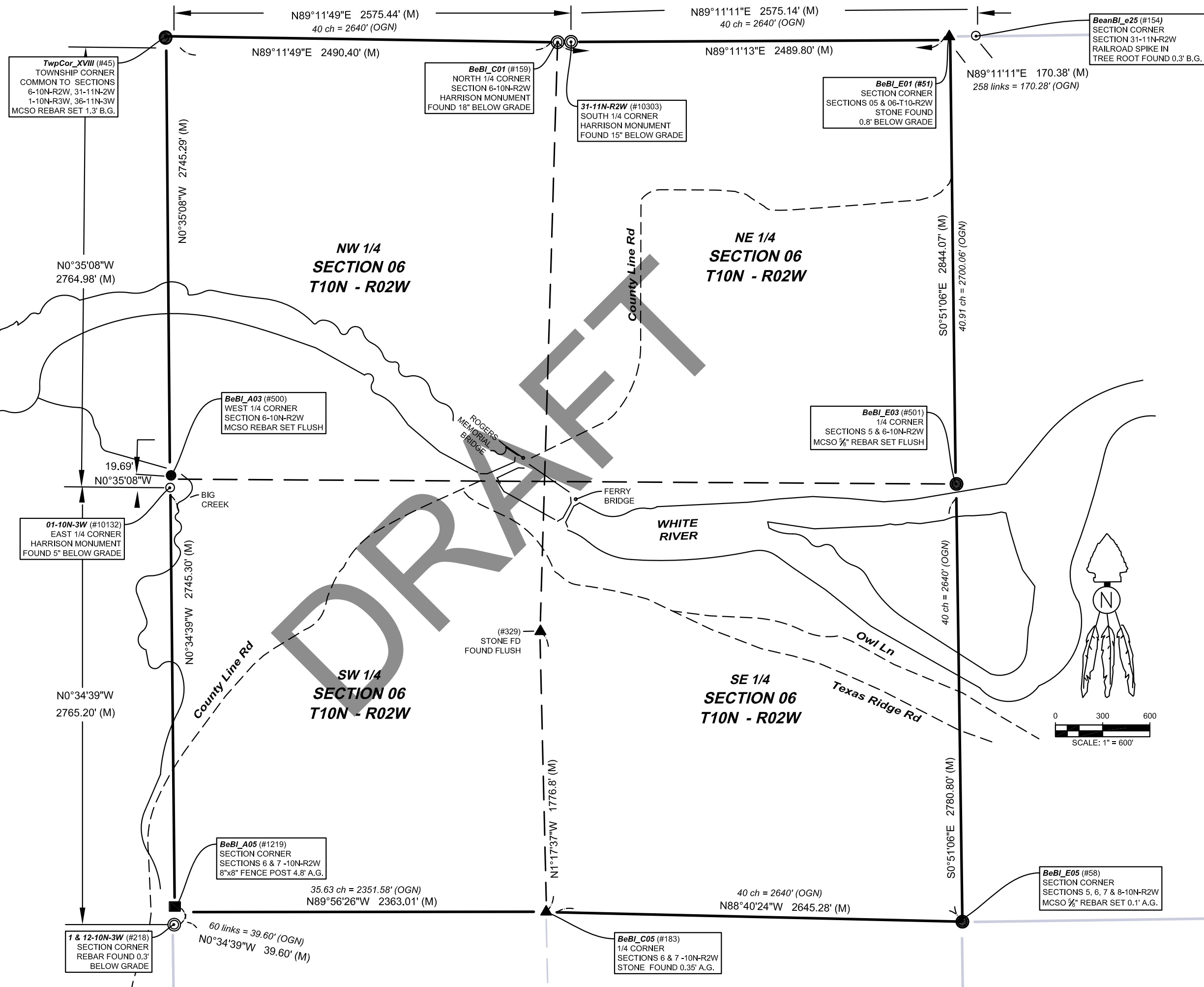
Certified This Date, April 16, 2024

Michael E. Sheppard  
Professional Surveyor  
No. 20100021  
State of Indiana  
msheppard@co.monroe.in.us



**LEGEND:**

- (M) Measured Distance
- (R) Record Distance
- (OGN) Original Government Notes
- (C) Calculated Distance
- (CR) Calculated from Record
- BeBl\_A01** Corner Reference ID
- (#283) Survey Point Number
- A.G. Above grade
- B.G. Below grade
- Iron Monument Found
- Iron Monument Set
- ▲ Stone Found
- Post Found
- Line not to scale



I affirm, under the penalties for perjury, that I have taken reasonable care to reduce each Social Security Number in this document, unless required by law, to the name of the person to whom it applies.

**OFFICE OF THE MONROE COUNTY SURVEYOR**  
Trohn Enright-Randolph Monroe County Surveyor  
Michael E. Sheppard Licensed Surveyor  
550 N Morton St. Ste. 205, Bloomington, IN 47404 (812) 349-2570  
Saved on: Apr 15, 2024 Plotted on: Apr 15, 2024

Project: 2024-001  
Field work by: MES & JMG  
Drawn by: JMG  
Reviewed by: MES, TER & SRB

**CORNER PERPETUATION SURVEY**  
**SECTION 6- T10N - R02W**  
Bean Blossom Township  
Monroe County, Indiana  
SHEET 1 OF 30  
File path: N:\Monument\_Records\T10N\_R02W\_BeanBlossom\00\_S-T-R06-T10N-R02W\Draw06-T10N-R02W\WC3D2024\_PerpetuationSurvey.dwg

## REPORT OF SURVEY:

In accordance with Title 865, Article 1, Chapter 12 of the Indiana Administrative Code, the following observations and opinions are submitted regarding the various uncertainties in the locations of the corners established by this survey as a result of availability and condition of reference monuments, occupation or possession lines, and clarity or ambiguity of the record descriptions and plats. There may be unwritten rights associated with these uncertainties. Any uncertainty associated with the corners shown hereon is inherently passed to any parcel corner dependent on its position. The Relative Positional Accuracy in the location of points shown on this survey is within that allowable for a rural survey (0.26 feet + 200 ppm) as defined by Title 865, Rule 12 of the Indiana Administrative Code.


The purpose of this survey is to perpetuate the section/half section corners in Section 6-T10N-R02W, 2nd Principal Meridian, Bean Blossom Township, Monroe County, Indiana. Interior quarter-section corners, sixteenth-section corners, and corners of minor subdivisions were not evaluated in any way unless specifically discussed herein. The relationship of the section/half section corners to the adjoining parcel boundary lines was not addressed. Occupation lines in the immediate vicinity of the monuments found or set are shown on the associated Monument Records on file in the Office of the Monroe County Surveyor.

Reference survey records were obtained from the Monroe County Surveyor, Monroe County Recorder, Monroe County Auditor, Monroe County Planning, Monroe County Highway Department, and the U.S. Army Corps of Engineers. Surveys consulted are included in the history section pertaining to each monument. Reference Survey ID numbers refer to the Monroe County Surveyor's Reference Survey Database and Instrument numbers refer to the Monroe County Recorder's Database, unless noted otherwise.

## MONUMENTS FOUND OR SET:

Monuments and corners discovered, analyzed, evaluated and used in the process of this survey, the theory of location used to accept or establish these monuments and corners, and this surveyor's opinion of the uncertainties associated with these monuments and corners are discussed in the theory of location section of the following corner tie sheets:

DRAFT

SHEET2 2 OF 30	<b>CORNER PERPETUATION SURVEY</b> <b>SECTION 6 – T10N - R02W</b> Bean Blossom Township Monroe County, Indiana	Project: 2024-001 Field work by: Michael E. Sheppard & Jason M. George Drawn by: JMG Reviewed by: MES, TER & SRB	 <b>OFFICE OF THE MONROE COUNTY SURVEYOR</b> <b>Trohn Enright-Randolph</b> <i>Monroe County Surveyor</i> Morton Street Ste. 205, Bloomington, IN 47404 surveyoroffice@co.monroe.in.us
-------------------------	--	--	---

# MONUMENT RECORD

Corner ID: **Township Corner XVIII**

## Section Corner

Southwest corner Section 31, -T11N-R02W, 2nd P.M.

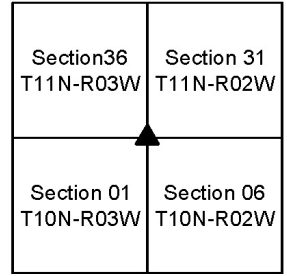
Southeast corner Section 36, -T11N-R03W, 2nd P.M.

Northeast corner Section 1 -T10N-R03W, 2nd P.M.

Northwest corner Section 6, -T10N-R02W, 2nd P.M.

Wayne Township, Owen County, Indiana

*Though not actually in Monroe County, Monument is also, in places, shown as  
Bean Blossom Township Monroe County Indiana*



**MONUMENT:** Describe monument set or found (Include material type, scribing, distance above/below grade, dimensions.)

Set 5/8" rebar (12" long), with 2" diameter aluminum cap inscribed MONROE COUNTY SURVEYORS OFFICE SHEPPARD PLS#20100021 in a drill hole, that was drilled into a chunk of concrete, found 1.5' below ground. The top of the rebar is now 0.2' above the concrete top and 1.3' below ground. The rebar was placed at the location of an iron pipe in concrete that was located by me (Michael E Sheppard) personally, on a Section corner reestablishment survey for the Owen County Surveyors Office, on 4-22-2004, based on finding the same 2 control points (nails on a levee) that I shot the pipe from on said date. The pipe has since been excavated out and was observed lying flat on the ground shrouded by a large mass of concrete.

**MONUMENT LOCATION SKETCH:**



MONUMENT ACCESSORIES			
<p><i>Other survey grade monuments that were located in the vicinity and their relation to the monument. Witnesses noted as a Rebar Lite are a 5/8" diameter by 16" polycarbonate rod with a 1-1/2" mag nail in top and yellow plastic cap stamped "MONROE COUNTY WITNESS POINT" set 0.1 foot below grade unless otherwise noted.</i></p> <p style="text-align: center;"><i>Geodetic coordinates in this table are provided in the format Northing, Easting.</i></p>			
(#10301)	N79°32' 14"W	28.44'	N:1490740.9635' E:3065155.0205' Rebar Lite
(#10299)	N01°12' 51"W	491.58'	N:1491227.2811' E:3065172.5680' Rebar Lite
(#10314)	N38°47' 54"W	2094.05'	N:1492367.7845' E:3063870.8396 Rebar Lite



**OFFICE OF THE MONROE COUNTY SURVEYOR • Trohn Enright-Randolph**

501 N Morton Street Ste 205, Bloomington, IN 47404 • 812-349-2570 • surveyoroffice@co.monroe.in.us



# MONUMENT RECORD

Corner ID: **Township Corner XVIII**

## Section Corner

Southwest corner Section 31, -T11N-R02W, 2nd P.M.

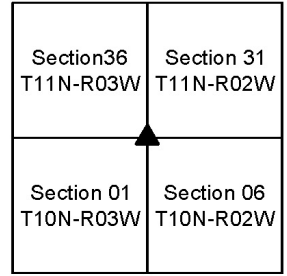
Southeast corner Section 36, -T11N-R03W, 2nd P.M.

Northeast corner Section 1 -T10N-R03W, 2nd P.M.

Northwest corner Section 6, -T10N-R02W, 2nd P.M.

Wayne Township, Owen County, Indiana

*Though not actually in Monroe County, Monument is also, in places, shown as  
Bean Blossom Township Monroe County Indiana*



**PHOTO IDENTIFIED:** Photo Date: 02/26/2024



Photo Orientation & Description: From above



Photo Orientation & Description: From West looking East

**EXISTING SURVEY HISTORY** Include as much detail and history of the corner as known at the time of perpetuation.

**ORIGINAL GOVERNMENT SURVEY:**

Year Surveyed: 1811 By: James Holmes Deputy Surveyor

Where filed or recorded: original notes, pages 239 & 240.

Original monument: post

Bearing Trees or Reference Monuments:

Species	Dia.	Bearing	Distance
Hackberry	12"	N73°W	9 links
Hackberry	18"	S23°W	8 links

Notes:

**SUBSEQUENT CORNER RESTORATION:**

Date Surveyed: Oct. 11, 1881 By: James King

Where filed or recorded: Owen County Survey Book 2, page 300.

Original monument: cited as perpetuated but monument type not noted.

Bearing Trees or Reference Monuments:

Species	Dia.	Bearing	Distance
Elm	6"	N10°30'E	7 ½ links
		°	

Notes:

**OTHER SURVEY HISTORY:** Include details such as surveyor name, date, recording info, monument description, etc.

Date	RSID	Surveyor	Description	File Location
7/28/1995	RSID005376	Mundy, Michael D	CRISMORE PROPERTY S1,6-T10N-R2W	108415.IN
6/12/2004	RSID002183	Sheppard, Michael E.	Plat of Section Corner Re-Establishment Survey. Owen/Monroe Line.	

**ORIGINAL OR SUBSEQUENT SURVEY EVIDENCE FOUND:** Include, search area or areas, search procedure, etc.

Date of Field work/Search: 02/21/2024 & 02/26/2024 By: MES/JMG Monument Found: rebar set in chunk of buried concrete.

BTs or Reference Objects Found: no, but new references made Project #: 24-001 Field Book: 56 pages 2 and 6.



**OFFICE OF THE MONROE COUNTY SURVEYOR • Trohn Enright-Randolph**

501 N Morton Street Ste 205, Bloomington, IN 47404 • 812-349-2570 • surveyoroffice@co.monroe.in.us

# MONUMENT RECORD

Corner ID: **Township Corner XVIII**

## Section Corner

Southwest corner Section 31, -T11N-R02W, 2nd P.M.

Southeast corner Section 36, -T11N-R03W, 2nd P.M.

Northeast corner Section 1 -T10N-R03W, 2nd P.M.

Northwest corner Section 6, -T10N-R02W, 2nd P.M.

Wayne Township, Owen County, Indiana

*Though not actually in Monroe County, Monument is also, in places, shown as  
Bean Blossom Township Monroe County Indiana*

Section 36 T11N-R03W	Section 31 T11N-R02W
Section 01 T10N-R03W	Section 06 T10N-R02W

**OTHER EVIDENCE:** Describe corner location relative to nearby features and how to reach the corner location – note fences, roads, timber cutting lines, mow lines, clearings, plantings, streams, topo changes, etc.

Monument was set in a patch of Johnson grass where north-south and west farm field division lines cornered, in line with a levee/tree line running north and south that begins approximately 475' north of the monument. We accessed the corner via a north-south farm lane, that is ¼ mile to the west and runs from Ramona Road to the township line.

**MONUMENT PRESERVATION:** Describe work done to preserve existing monument.

Set 5/8" rebar (12" long), with 2" aluminum cap inscribed MONROE COUNTY SURVEYORS OFFICE SHEPPARD PLS#20100021 set in a drill hole, that was drilled into a chunk of concrete, that was found 1.5' below ground. The top of the rebar is now 0.2' above the concrete top and 1.3' below ground. The rebar was placed at the location of an iron pipe in concrete that was located by me (Michael E Sheppard) personally, on a Section corner establishment survey for the Owen County Surveyors Office, on 4-22-2004, based on finding the same 2 control points (nails) that I shot the pipe from on said date. The pipe has since been excavated out and was observed lying flat on the ground shrouded by a large mass of concrete. I believe the rebars depth will keep it safe from farm equipment now. Additionally, 3 rebar lites were set that can be used to reestablish the monuments' location should something happen to it. A yellow carsonite survey marker post was placed beside the monument. The buried base of one I set 20 years ago was uncovered by the monument, but the top had been snapped off.

**THEORY OF LOCATION:** Describe the theory of location for acceptance of this monument. Include monument origin and associated uncertainty.

Rebar was set in a chunk of concrete that was found 18" below ground at the location I personally found a 1" inside diameter iron pipe, on 4-22-2004. At that time, I also found a 2 ½" long by 0.4' thick by 0.8' wide limestone laying on top of the ground by the pipe. The stone was not found this survey. Also at that time, I had a conversation with neighboring landowner and farmer Kevin Wampler who told me he knew the corner had been marked by a stone that was dug out by a prior farmer. A survey by Michael D. Mundy PLS, dated July 24, 1995, recorded in miscellaneous record book 127, page 17 in the Monroe County Recorder's office, RSID005376 in the Monroe County Surveyors Office, shows a concrete monument at this corner, making no mention of the pipe, leading to the question of was the pipe in place at that time or the chunk of concrete (concrete monument?) is all that was there at that time. The rebar set this survey, in the chunk of concrete is, in my opinion set where the most reliable evidence of the original location of the Township corner, within an uncertainty of 0.5'.

**GEODETIC COORDINATES:** *Northing:* 1490735.8, *Easting:* 3065183.0

### BASIS OF GEODETIC COORDINATES:

The basis of bearings is Grid North NAD83(2011), Indiana West Zone, Epoch 2010.0000, Geoid Model G2012BU7, Datum NAD83\_NO\_TRANS, US Survey Feet, derived from GPS observations utilizing the Indiana Real-Time Network (INCORS). Coordinate data was collected with a Javad Triumph LS Network Rover and/or with a Sokkia Set 510 Total Station radially from points located with GPS. Distances obtained with GPS have not been adjusted to ground. To adjust grid distances to ground distances multiply them by a scale factor of 1.000041208.

This document is not complete without the associated Corner Perpetuation plat and report of survey for Section 6 Township 10 North Range 2 West by Michael E. Sheppard of the Monroe County Surveyor's Office dated .



OFFICE OF THE MONROE COUNTY SURVEYOR • Trohn Enright-Randolph

501 N Morton Street Ste 205, Bloomington, IN 47404 • 812-349-2570 • surveyoroffice@co.monroe.in.us

Page 3 of 4

**MONUMENT RECORD**

Corner ID: **Township Corner XVIII**

**Section Corner**

Southwest corner Section 31, -T11N-R02W, 2nd P.M.

Southeast corner Section 36, -T11N-R03W, 2nd P.M.

Northeast corner Section 1 -T10N-R03W, 2nd P.M.

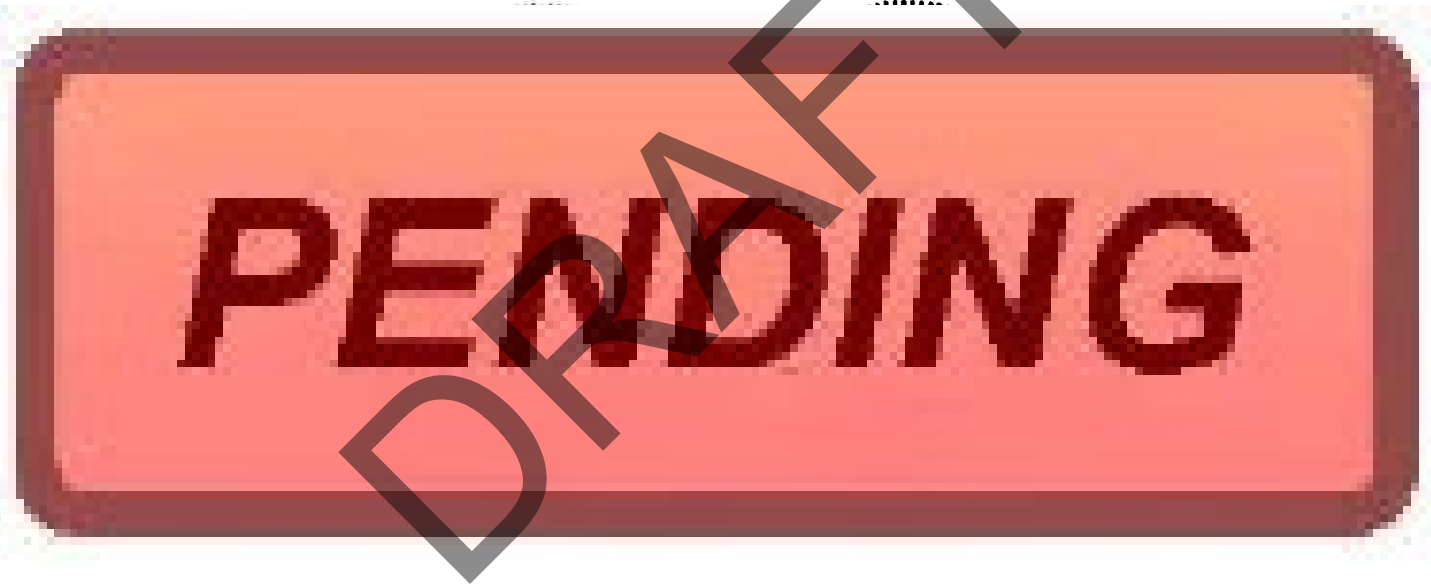
Northwest corner Section 6, -T10N-R02W, 2nd P.M.

Wayne Township, Owen County, Indiana

*Though not actually in Monroe County, Monument is also, in places, shown as  
Bean Blossom Township Monroe County Indiana*

Section 36 T11N-R03W	Section 31 T11N-R02W
Section 01 T10N-R03W	Section 06 T10N-R02W

**CERTIFICATIONS:**



**OFFICE OF THE MONROE COUNTY SURVEYOR • Trohn Enright-Randolph**

501 N Morton Street Ste 205, Bloomington, IN 47404 • 812-349-2570 • surveyoroffice@co.monroe.in.us

Report Sheet# 6 of 30

Page 4 of 4

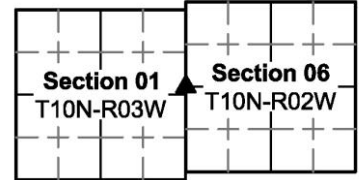
# MONUMENT RECORD

Corner ID: **BeBI\_A03**

**West Quarter Corner**

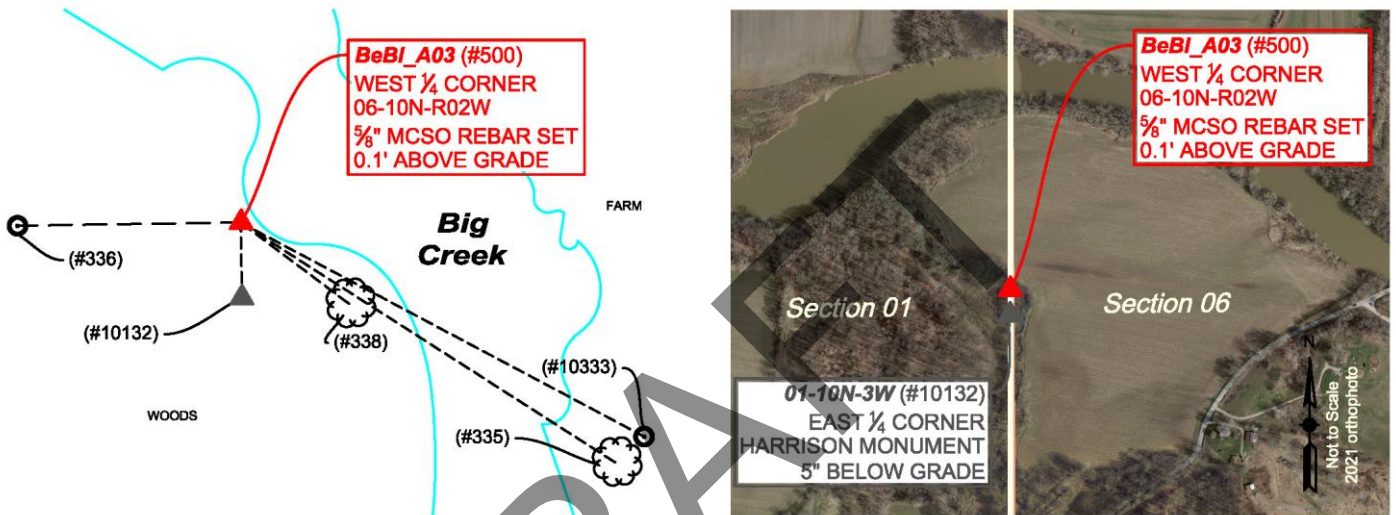
Section 6- T10N-R02W, 2nd P.M.

Bean Blossom Township, Monroe County, Indiana



**MONUMENT:** Describe monument set or found (Include material type, scribing, distance above/below grade, dimensions.)  
 5/8" rebar (24" long) with 2" diameter aluminum cap inscribed MONROE COUNTY SURVEYORS OFFICE SHEPPARD PLS #20100021, set with top left 0.1' above ground, at the west top of bank of a northwesterly flowing creek.

**MONUMENT LOCATION SKETCH:**



WITNESS MONUMENT TIES			
<p><i>All ties to new Bearing Trees (BTs) are measured from the monument to the center of the tree. BT diameters are noted as dbh and are measured approximately 4.5' above ground. Witnesses noted as a rebarlite are a 5/8 diameter by 16" polycarbonate rod with a 1-1/2" magnail and yellow plastic cap stamped "MONROE COUNTY WITNESS POINT" set 0.1 foot below grade unless otherwise noted.</i></p>			
ID	BEARING	DISTANCE	DESCRIPTION
(#338)	S 53d E	35.4'	7' diameter (at base) 7 fork Red Maple Tree.
(#335)	S 57d E	116.1'	16" Shagbark Hickory Tree at edge of woods.
MONUMENT ACCESSORIES			
<p><i>Other survey grade monuments that were located in the vicinity and their relation to the monument. Witnesses noted as a Rebar Lite are a 5/8" diameter by 16" polycarbonate rod with a 1-1/2" mag nail in top and yellow plastic cap stamped "MONROE COUNTY WITNESS POINT" set 0.1 foot below grade unless otherwise noted.</i></p> <p><i>Geodetic coordinates in this table are provided in the format Northing, Easting.</i></p>			
(#10132)	S 0d56'43" E	19.64'	N:1487970.9637', E:3065211.2556' Harrison Monument found 5" below grade. East 1/4 Corner of Section 01 T10N R03W
(#10333)	S 62d4'19" E	119.18'	N:1487934.7844 E:3065316.2346 Rebar Lite set at edge of woods.
(#336)	S 89d08'21 W	58.31'	N:1487989.7790 E:3065152.6835 Rebar Lite set-in apple tree grove.



**OFFICE OF THE MONROE COUNTY SURVEYOR • Trohn Enright-Randolph**

501 N Morton Street Ste 205, Bloomington, IN 47404 • 812-349-2570 • surveyorsoffice@co.monroe.in.us



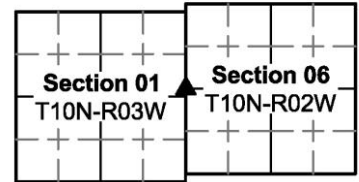
**MONUMENT RECORD**

Corner ID: **BeBI\_A03**

**West Quarter Corner**

Section 6- T10N-R02W, 2nd P.M.

Bean Blossom Township, Monroe County, Indiana



**PHOTO IDENTIFIED:** Photo Date: 03/04/2024



Photo Orientation & Description: From West looking East



Photo Orientation & Description: Harrison Monument to the South from above.

**EXISTING SURVEY HISTORY** Include as much detail and history of the corner as known at the time of perpetuation

**ORIGINAL GOVERNMENT SURVEY:**

Notes: The West Quarter corner of Section 6, was not set in the original government survey.

**SUBSEQUENT CORNER RESTORATION:**

None found

**OTHER SURVEY HISTORY:** Include details such as surveyor name, date, recording info, monument description, etc.

Date	RSID	Surveyor	Description	File Location
6/12/2004	002183	Sheppard, Michael E.	Plat of Section Corner Re-Establishment Survey. Owen/Monroe Line.	

**ORIGINAL OR SUBSEQUENT SURVEY EVIDENCE FOUND:** Include, search area or areas, search procedure, etc.

Date of Field work/Search: 3/04/2024 By: MES/JG Monument: Rebar set BTs or Reference Objects Found: not found but established.  
Project #: 24-001 Field Book: 56 page 09

**OTHER EVIDENCE:** Describe corner location relative to nearby features and how to reach the corner location – note fences, roads, timber cutting lines, mow lines, clearings, plantings, streams, topo changes, etc.

We drove across a farm field that has an opening to County Line Road, just South of the bridge over White River, then waded across a creek to the monument's location at the west top of bank of said creek.

**MONUMENT PRESERVATION:** Describe work done to preserve existing monument.

Monument was tied to a Harrison monument at the East Quarter Corner of Section 1, T10N, R3W. Additionally 2 rebar lites and reference trees were located. A steel post with Monroe County Surveyor sign was set 0.3' Northeast of the rebar, 3.8' above ground, with sign facing Southwest (away from creek).



**OFFICE OF THE MONROE COUNTY SURVEYOR • Trohn Enright-Randolph**

501 N Morton Street Ste 205, Bloomington, IN 47404 • 812-349-2570 • surveyorsoffice@co.monroe.in.us

Page 2 of 3



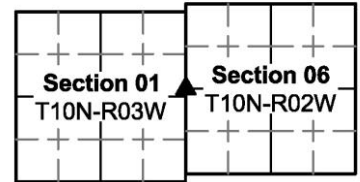
**MONUMENT RECORD**

Corner ID: **BeBI\_A03**

**West Quarter Corner**

Section 6- T10N-R02W, 2nd P.M.

Bean Blossom Township, Monroe County, Indiana



**THEORY OF LOCATION:** *Describe the theory of location for acceptance of this monument. Include monument origin and associated uncertainty.*

The rebar was set online between the Harrison monument found (0.4' below ground) at the East Quarter corner of Section 1, Township 10 North Range 3 West and the rebar set in a found chunk of concrete at the Northwest corner of Section 6, Township 10N Range 2W (Twp Cor XVIII) and at an equidistant split of the measured length of the west line of said Section 6. The Harrison monument at the East Quarter of Section 1, T10N, R3W, was set by me (Michael E Sheppard) personally in a 2004 Section corner reestablishment survey for the Owen County Surveyors Office (Monroe County Surveyor Document RSID002183), at an online equidistant split between the Mundy PLS capped rebar at the Southeast corner of Section 1-10N-3W and the Northeast corner of said Section, which at that time was monumented by an iron pipe in concrete.

**GEODETIC COORDINATES:** *Northing:* 1487990.7, *Easting:* 3065211.1

**BASIS OF GEODETIC COORDINATES:**

The basis of bearings is Grid North NAD83(2011), Indiana West Zone, Epoch 2010.0000, Geoid Model G2012BU7, Datum NAD83\_NO\_TRANS, US Survey Feet, derived from GPS observations utilizing the Indiana Real-Time Network (INCORS). Coordinate data was collected with a Javad Triumph LS Network Rover and/or with a Sokkia Set 510 Total Station radially from points located with GPS. Distances obtained with GPS have not been adjusted to ground. To adjust grid distances to ground distances multiply them by a scale factor of 1.000041208.

This document is not complete without the associated Corner Perpetuation plat and report of survey for Section 6, Township 10 North Range 2 West. by Michael E. Sheppard of the Monroe County Surveyor's Office dated xxxxxx.

**CERTIFICATIONS:**

.....



**OFFICE OF THE MONROE COUNTY SURVEYOR • Trohn Enright-Randolph**

501 N Morton Street Ste 205, Bloomington, IN 47404 • 812-349-2570 • surveyorsoffice@co.monroe.in.us

Page 3 of 3

# MONUMENT RECORD

Corner ID: **BeBI\_A05**

## Section Corner

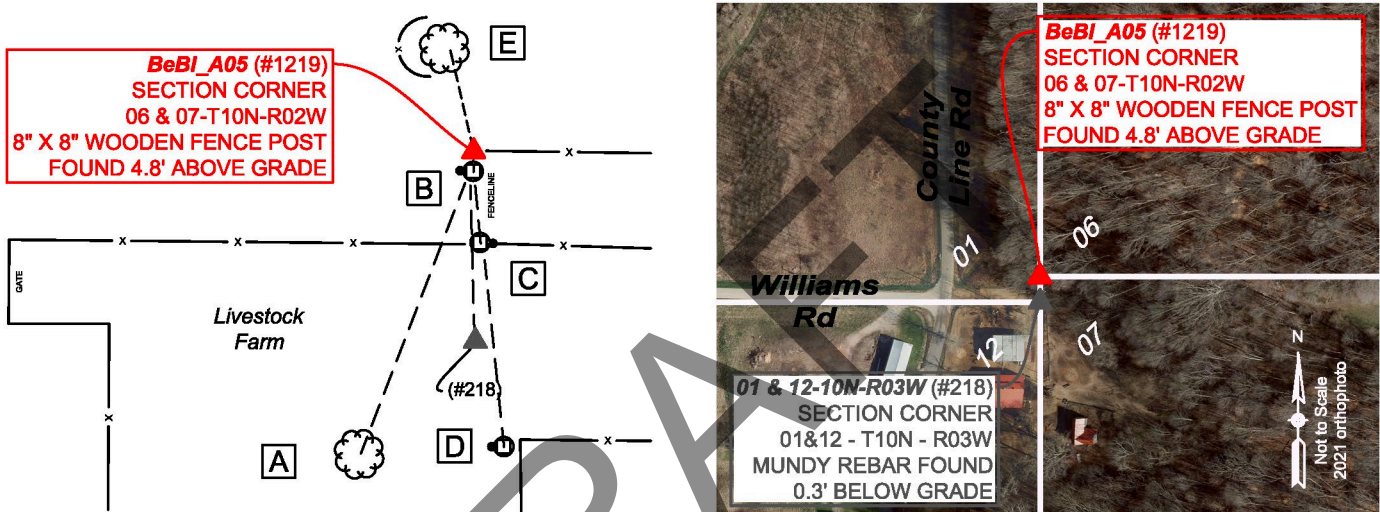
Sections 6 and 7- T10N-R02W, 2nd P.M.  
 Bean Blossom Township, Monroe County, Indiana

Section 01 T10N-R03W	Section 06 T10N-R02W
Section 12 T10N-R03W	Section 07 T10N-R02W

**MONUMENT:** Describe monument set or found (Include material type, scribing, distance above/below grade, dimensions.)

Based on the calculation from the offset monument to the south (Mundy PLS capped rebar at southeast corner of Section 1 Township 10 North Range 3 West), this corner falls in a wood corner post at the corner of ancient north-south and east bound fences, North 46 degrees 55 minutes 34 seconds East, 0.47' from a Mundy PLS capped rebar found 0.2' above ground at the southwest base of the post. The rebar was set in a survey by Michael D. Mundy PLS, dated July 24, 1995, recorded in miscellaneous record book 127, page 17 in the Monroe County Recorder's office. Monroe County surveyors' office document #RSID005376. In Mr. Mundy's report for his survey, he notes accepting the post as the corner and setting the rebar at its base, apparently as a witness.

**MONUMENT LOCATION SKETCH:**



**WITNESS MONUMENT TIES**

*All ties to new Bearing Trees (BTs) are measured from the monument to the center of the tree. BT diameters are noted as dbh and are measured approximately 4.5' above ground.*

ID	BEARING	DISTANCE	DESCRIPTION
Witness A	S 21d W	67.2'	24" Cottonwood Tree
Witness B	S 0d E	4.3'	Set mag nail and washer 1' above grade on the west side of 9" fence post.
Witness C	S 3d E	19.1'	Set mag nail and washer 2.6' above grade on the east side of 8" fence post
Witness D	S 6d E	61.6'	Set mag nail and washer 0.9' above on the west side of 6" corner fence post.
Witness E	N 13d W	21.5'	Found 33" Red Oak Tree as per Witness E from 1997 monument record.

**MONUMENT ACCESSORIES**

*Other survey grade monuments that were located in the vicinity and their relation to the monument. Geodetic coordinates in this table are provided in the format Easting, Northing.*

(#218)	S 0d34'39" E	39.60'	Rebar with red MUNDY cap found 0.3' below grade. Common Corner to Sections 1 & 12 Township 10N Range 03W 3065239.12, 1485205.90
--------	--------------	--------	---



**OFFICE OF THE MONROE COUNTY SURVEYOR • Trohn Enright-Randolph**

501 N Morton Street Ste 205, Bloomington, IN 47404 • 812-349-2570 • surveyoroffice@co.monroe.in.us

Page 1 of 3

**MONUMENT RECORD**

Corner ID: **BeBI\_A05**

**Section Corner**

Sections 6 and 7- T10N-R02W, 2nd P.M.  
 Bean Blossom Township, Monroe County, Indiana

Section 01 T10N-R03W	Section 06 T10N-R02W
Section 12 T10N-R03W	Section 07 T10N-R02W

**PHOTO IDENTIFIED:** Photo Date: 01/22/2024



Photo Orientation & Description: From Northwest looking Southeast.



Photo Orientation & Description: From West looking East.

**EXISTING SURVEY HISTORY** Include as much detail and history of the corner as known at the time of perpetuation

**ORIGINAL GOVERNMENT SURVEY:**

Year Surveyed: 1815 By: William Harris Deputy Surveyor

Where filed or recorded: Monroe County original notes page 265

Original monument: Post

Bearing Trees or Reference Monuments:

Species	Dia.	Bearing	Distance
Beech	4"	East	14 Links
Beech	11"	N78°W	19 Links

Notes:

**SUBSEQUENT CORNER RESTORATION:**

None Found

**OTHER SURVEY HISTORY:** Include details such as surveyor name, date, recording info, monument description, etc.

Date	RSID	Surveyor	Description	File Location
7/28/1995	RSID005376	Mundy, Michael D	CRISMORE PROPERTY S1,6-T10N-R2W	108415.IN
6/12/2004	RSID002183	Sheppard, Michael E	Plat of Section Corner Re-Establishment Survey. Owen/Monroe Line.	

**ORIGINAL OR SUBSEQUENT SURVEY EVIDENCE FOUND, BY THE MONROE COUNTY SURVEYORS OFFICE:** Include, search area or areas, search procedure, etc.

Date of Field work/Search: 03/07/1997 By: Kevin Enright/Alan McClain Monument Found: Mundy PLS capped rebar. BTs or Reference Objects Found: No, but new references made. Project #: 97-01 Field Book: 26, page 59. Notes:

**ORIGINAL OR SUBSEQUENT SURVEY EVIDENCE FOUND, BY THE MONROE COUNTY SURVEYORS OFFICE:** Include, search area or areas, search procedure, etc.

Date of Field work/Search: 01/22/2024 By: MES/JMG Monument Found: Wood corner post with Mundy PLS capped rebar at its base. BTs or Reference Objects Found: Yes, references from prior MCSO project were found. Additionally new references were made. Project #: 24-001 Field Book: 55 page 64. Notes:



**OFFICE OF THE MONROE COUNTY SURVEYOR • Trohn Enright-Randolph**

501 N Morton Street Ste 205, Bloomington, IN 47404 • 812-349-2570 • surveyoroffice@co.monroe.in.us



**MONUMENT RECORD**

Corner ID: **BeBI\_A05**

**Section Corner**

Sections 6 and 7- T10N-R02W, 2nd P.M.  
Bean Blossom Township, Monroe County, Indiana

Section 01 T10N-R03W	Section 06 T10N-R02W
Section 12 T10N-R03W	Section 07 T10N-R02W

**OTHER EVIDENCE:** Describe corner location relative to nearby features and how to reach the corner location – note fences, roads, timber cutting lines, mow lines, clearings, plantings, streams, topo changes, etc.

Wood post with rebar beside it is at ancient north-south and east fence intersection.

**MONUMENT PRESERVATION:** Describe work done to preserve existing monument.

GPS Located and established references to the corner.

**THEORY OF LOCATION:** Describe the theory of location for acceptance of this monument. Include monument origin and associated uncertainty.

Found-I am in agreement with Michael Mundy’s theory of location that the found corner post represents the most reliable evidence of the originally established location of the Southwest corner of Section 6/Northwest corner Section 7, T10N R2W. I would theorize with an estimated uncertainty of 2’.

**GEODETIC COORDINATES:** Northing: 1485245.5, Easting: 3065238.7

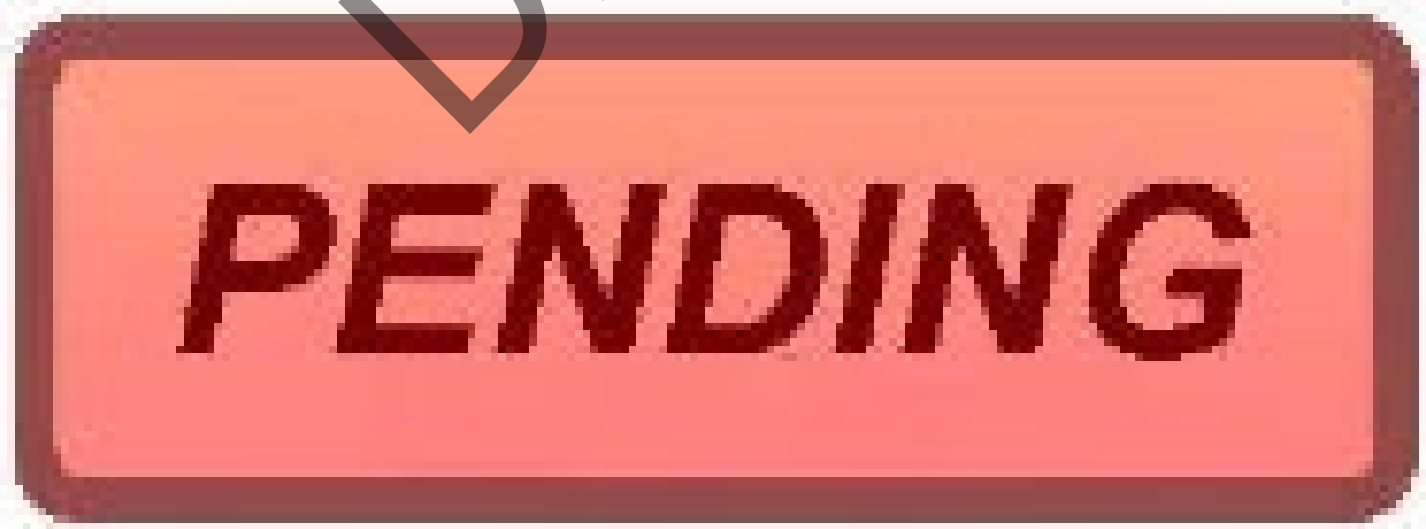
**BASIS OF GEODETIC COORDINATES:**

The basis of bearings is Grid North NAD83(2011), Indiana West Zone, Epoch 2010.0000, Geoid Model G2012BU7, Datum NAD83\_NO\_TRANS, US Survey Feet, derived from GPS observations utilizing the Indiana Real-Time Network (INCORS). Coordinate data was collected with a Javad Triumph LS Network Rover and/or with a Sokkia Set 510 Total Station radially from points located with GPS. Distances obtained with GPS have not been adjusted to ground. To adjust grid distances to ground distances multiply them by a scale factor of 1.000041208.

This document is not complete without the associated Corner Perpetuation plat and report of survey for Section 6 or 7, Township 11 North Range 2 West by Michael E. Sheppard of the Monroe County Surveyor’s Office dated xxxxxx.

**CERTIFICATIONS:**

DRAFT



**OFFICE OF THE MONROE COUNTY SURVEYOR • Trohn Enright-Randolph**

501 N Morton Street Ste 205, Bloomington, IN 47404 • 812-349-2570 • surveyoroffice@co.monroe.in.us

Report Sheet# 12 of 30

Page 3 of 3

**MONUMENT RECORD**

**State of Indiana - County of Monroe**

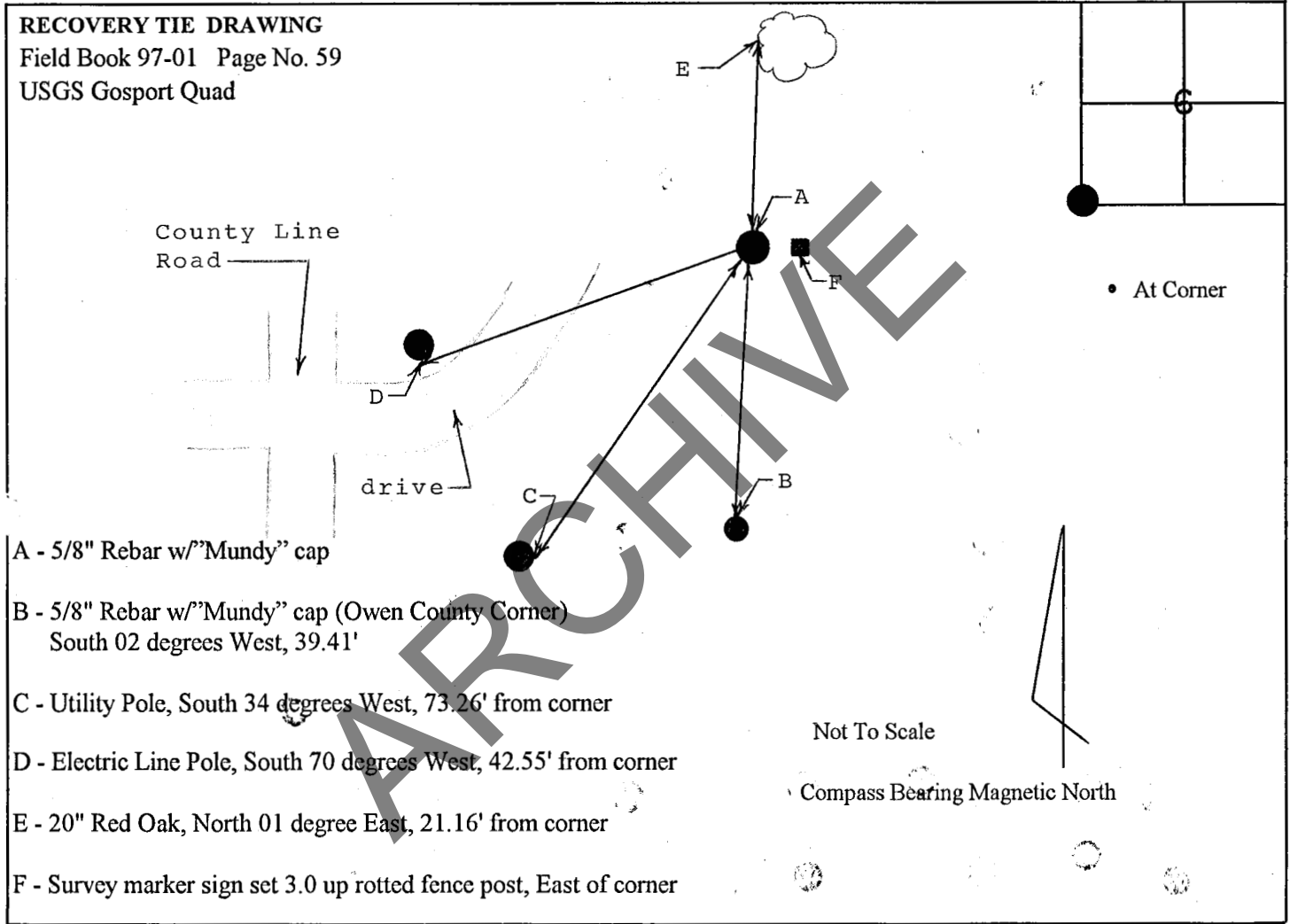
**Section: Six (6)**

**Township: 10 North**

**Range: 2 West**

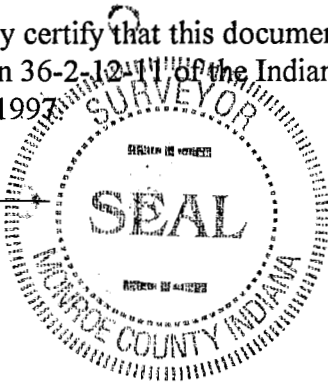
**Corner ID: Be Bl A-5**

**Monument Description & Remarks:** Found 5/8" Rebar w/"Mundy" surveyor cap at SW corner of section. Rebar was West of rotted fence post base. Offset from Owen County corner 39.41' South.



I, Kevin P. Enright, Monroe County Surveyor, hereby certify that this document was prepared under my direction in accordance with the provisions of Section 36-2-12-11 of the Indiana Code; and the above data is given under my hand and seal this 7th day of March 1997.

*Kevin Enright*  
 \_\_\_\_\_  
 Administered by Surveyor  
Review Board



Indiana R.L.S. No. \_\_\_\_\_

# MONUMENT RECORD

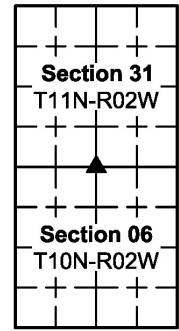
Corner ID: **BeBI\_C01**

## North Quarter Corner

Section 6- T10N-R02W, 2nd P.M.

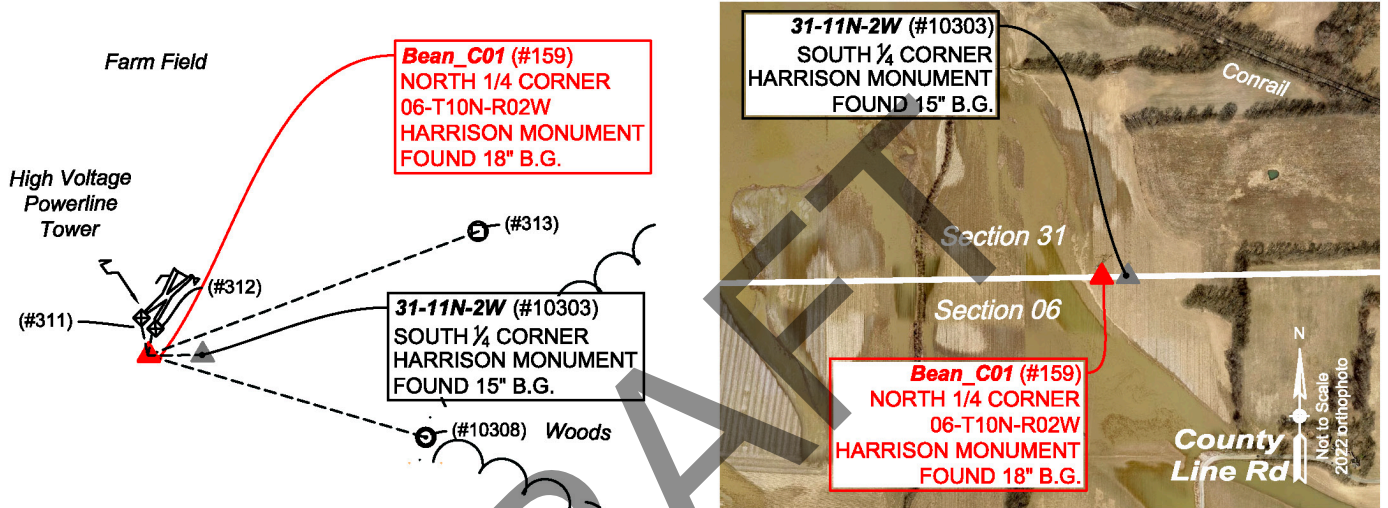
Wayne Township, Owen County, Indiana

Though this corner is in Owen County, it is, in places, referred to as  
Bean Blossom Township, Monroe County, Indiana



**MONUMENT:** Describe monument set or found (Include material type, scribing, distance above/below grade, dimensions.)  
Harrison monument found 18" below ground in a crop field.

**MONUMENT LOCATION SKETCH:**



**WITNESS MONUMENT TIES:** Describe at least three new BT's (Bearing Trees) and/or witness objects established or work done to preserve existing evidence. BT diameters are noted as dbh (diameter at breast height) and are measured approximately 4.5' above ground. Bearings and Distances are measured from the monument to the center of the BT. Bearings and Distances to witness ties were measured with a Sokkia Set 510 Total Station.

ID	Bearing	Distance	Description
(#313)	N69°50'E	557.1'	3" diameter concrete filled iron pipe, 2.8' above ground beside a steel post with PVC pipe over it.

### MONUMENT ACCESSORIES

Other survey grade monuments that were located in the vicinity and their relation to the monument. Witnesses noted as a Rebar Lite are a 5/8" diameter by 16" polycarbonate rod with a 1-1/2" mag nail in top and yellow plastic cap stamped "MONROE COUNTY WITNESS POINT" set 0.1 foot below grade unless otherwise noted.

Geodetic coordinates in this table are provided in the format Northing, Easting.

(#10303)	N 89d11'49" E	85.04'	N:1490771.9045' E:3067758.1781 ' Harrison Monument found 15" below ground
(#311)	N 07d16'59" W	44.34'	N:1490814.6909' E:3067667.5225 Cut X in concrete pad supporting the Southeast leg of a steel power tower pole
(#312)	N 31d15'20" W	53.27'	N:1490816.2517' E:3067645.5030' Cut X in concrete pad supporting the Southwest leg of a steel power tower pole
(#10308)	S 73d28'13" E	454.05'	N: 1490641.5292' E:3068108.4275' Rebar lite set with top 0.1' B.G. at west end of an east bound tree line

**MONUMENT RECORD**

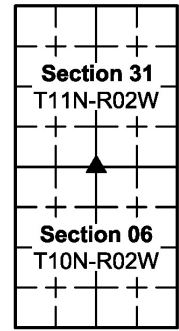
Corner ID: **BeBI\_C01**

**North Quarter Corner**

Section 6- T10N-R02W, 2nd P.M.

Wayne Township, Owen County, Indiana

Though this corner is in Owen County, it is, in places, referred to as  
Bean Blossom Township, Monroe County, Indiana



**PHOTO IDENTIFIED:** Photo Date: 02/26/2024



Photo Orientation & Description: From above



Photo Orientation & Description: From South looking North

**EXISTING SURVEY HISTORY** Include as much detail and history of the corner as known at the time of perpetuation

**ORIGINAL GOVERNMENT SURVEY:**

The North Quarter Corner of Section 6 was not set in the Original Government Survey.

**SUBSEQUENT CORNER RESTORATION:**

Date Surveyed: 05/11/2004 By: Michael E Sheppard  
Where filed or recorded: RSID002183 Monroe County Surveyors Office.  
Original monument: Harrison Monument  
Bearing Trees or Reference Monuments: No

**OTHER SURVEY HISTORY:** Include details such as surveyor name, date, recording info, monument description, etc.

Date	RSID	Surveyor	Description	File Location
7/28/1995	RSID005376	Mundy, Michael D	CRISMORE PROPERTY S1,6-T10N-R2W	108415.IN
6/12/2004	RSID002183	Sheppard, Michael E.	Plat of Section Corner Re-Establishment Survey. Owen/Monroe Line.	

**MONUMENT RECORD**

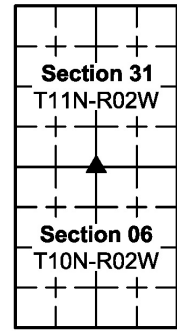
Corner ID: **BeBI\_C01**

**North Quarter Corner**

Section 6- T10N-R02W, 2nd P.M.

Wayne Township, Owen County, Indiana

Though this corner is in Owen County, it is, in places, referred to as  
Bean Blossom Township, Monroe County, Indiana



**ORIGINAL OR SUBSEQUENT SURVEY EVIDENCE FOUND BY THE MONROE COUNTY SURVEYORS OFFICE:** *Include, search area or areas, search procedure, etc.*

*Date of Field work/Search:* 02/26/2024 *By:* MES/JG *Monument Found:* Harrison monument. *BTs or Reference Objects Made:* yes  
*Project #:* 24-001 *Field Book:* 56, pages 4 & 5.

**OTHER EVIDENCE:** *Describe corner location relative to nearby features and how to reach the corner location – note fences, roads, timber cutting lines, mow lines, clearings, plantings, streams, topo changes, etc.*

Corner is in a crop field, near a Steel power pole supporting high transmission power lines. We reached the location via a farm lane that runs West off of a 90 degree turn in County Line Road. Then turning right across a farm field to the corner.

**MONUMENT PRESERVATION:** *Describe work done to preserve existing monument.*

Monument was uncovered, GPS located, photographed and witness ties made to it before being covered over again.

**THEORY OF LOCATION:** *Describe the theory of location for acceptance of this monument. Include monument origin and associated uncertainty.*

Monument was found. It was set by me (Michael E Sheppard) personally in a Section corner reestablishment survey for the Owen County Surveyors Office in 2004, (Monroe County Surveyor Document RSID002183) at an online equidistant split between an iron pipe in concrete found at the Northwest corner of the Section and a Stone found at the Northeast corner of the Section.

**GEODETIC COORDINATES:** *Northing:* 1490770.7, *Easting:* 3067673.1

**BASIS OF GEODETIC COORDINATES:**

The basis of bearings is Grid North NAD83(2011), Indiana West Zone, Epoch 2010.0000, Geoid Model G2012BU7, Datum NAD83\_NO\_TRANS, US Survey Feet, derived from GPS observations utilizing the Indiana Real-Time Network (INCORS). Coordinate data was collected with a Javad Triumph LS Network Rover and/or with a Sokkia Set 510 Total Station radially from points located with GPS. Distances obtained with GPS have not been adjusted to ground. To adjust grid distances to ground distances multiply them by a scale factor of 1.000041208.

This document is not complete without the associated Corner Perpetuation plat and report of survey for Section 6, Township 10 North Range 2 West by Michael E. Sheppard of the Monroe County Surveyor's Office dated xxxxxx.

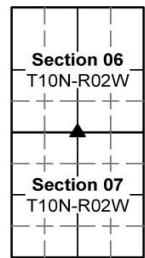
**CERTIFICATIONS:**





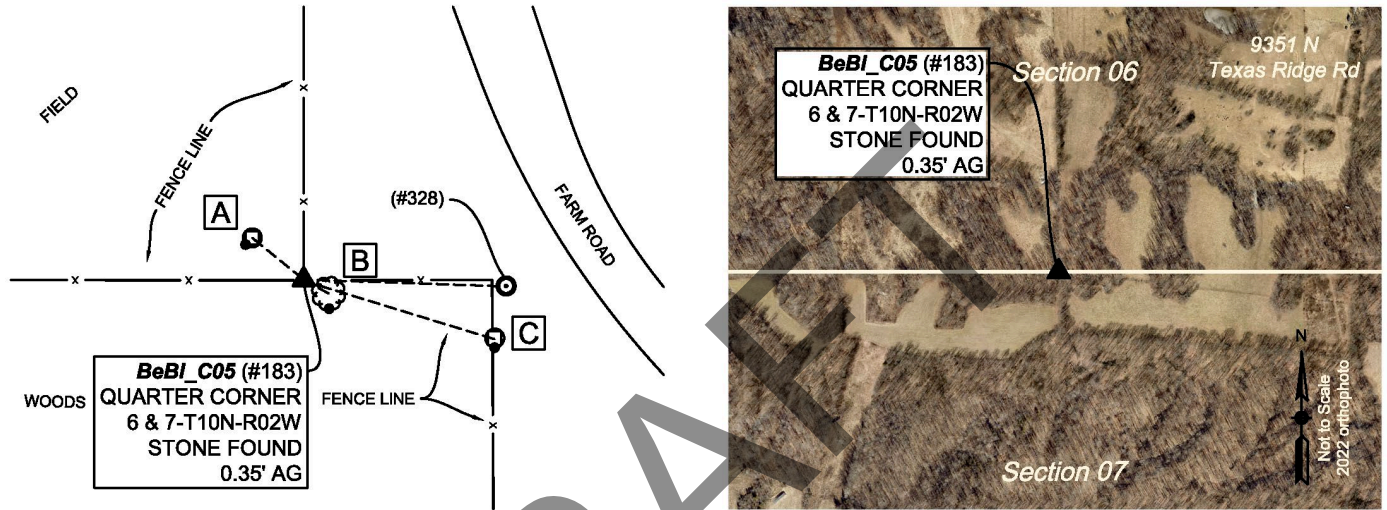
# MONUMENT RECORD

Corner ID: **BeBI\_C05 Quarter Corner**  
 Sections 6 & 7- T10N-R02W, 2nd P.M.  
 Bean Blossom Township, Monroe County, Indiana.



**MONUMENT:** Describe monument set or found (Include material type, scribing, distance above/below grade, dimensions.)  
 0.7' x 0.35' limestone found with no markings 0.35' above grade planted solidly in the ground.

**MONUMENT LOCATION SKETCH:**



**WITNESS MONUMENT TIES:** Describe at least three new BT's (Bearing Trees) and/or witness objects established or work done to preserve existing evidence. BT diameters are noted as dbh (diameter at breast height) and are measured approximately 4.5' above ground. Bearings and Distances are measured from the monument to the center of the BT. Bearings and Distances to witness ties were measured with a Sokkia Set 510 Total Station.

ID	BEARING	DISTANCE	DESCRIPTION
Witness A	N 51d W	7.0'	Mag nail and washer found 0.45' above grade in the southwest side of a 6" round wooden post with east/west running fence
Witness B	S 61d E	3.0'	Mag nail and washer found in scar 0.5' above grade in the south side of a 14" red oak with a Monroe County Surveyor "Protect Nearby Survey Marker" sign found 4.4' above grade facing west per 1999 monument record
Witness C	S 73d E	21.1'	Mag and washer found in the south side of a 7" round wooden post 5.1' above grade next to old nail and shiner found in the top of the post per 1999 monument record

MONUMENT ACCESSORIES			
<i>Other survey grade monuments that were located in the vicinity and their relation to the monument.</i>			
(#328)	S 88d01'17" E	20.03'	N:1485242.3584 E:3067621.7497' KJ HENNESSY PLS capped rebar found 0.1' above ground

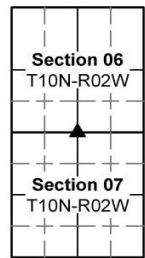


**OFFICE OF THE MONROE COUNTY SURVEYOR • Trohn Enright-Randolph**

501 N Morton Street Ste 205, Bloomington, IN 47404 • 812-349-2570 • surveyoroffice@co.monroe.in.us

**MONUMENT RECORD**

Corner ID: **BeBI\_C05 Quarter Corner**  
 Sections 6 & 7- T10N-R02W, 2nd P.M.  
 Bean Blossom Township, Monroe County, Indiana.



**PHOTO IDENTIFIED:** Photo Date: 4/09/2021



Photo Orientation & Description: From South Looking North



Photo Orientation & Description: From West Looking East

**EXISTING SURVEY HISTORY** Include as much detail and history of the corner as known at the time of perpetuation

**ORIGINAL GOVERNMENT SURVEY:**

Year Surveyed: 1815 By: William Harris Deputy Surveyor  
 Where filed or recorded: Original notes page 265  
 Original monument: Post

**Bearing Trees or Reference Monuments:**

Species	Dia.	Bearing	Distance
Beech	9"	N88°E	17 Links
Beech	14"	S60°W	21 Links

Notes:

**SUBSEQUENT CORNER RESTORATION:**

Notes: Though I (MES) found no restoration of the corner after its original establishment, or origin of the stone, I did find notes from a survey by C M Bowers, Monroe County Surveyor, in May of 1907, in Legal Survey book 3, page 25, that cited setting corners North and West of the South ½ mile corner of Section 6.

**OTHER SURVEY HISTORY:** Include details such as surveyor name, date, recording info, monument description, etc.

DocumentDate	SurveyID	Surveyor	Description	InstrumentNo
7/17/2021	RSID004562	Hennessy, Kevin J	Webb Type A Administrative Subdivision Final Plat Amendment 1	2021016292.IN

**ORIGINAL OR SUBSEQUENT SURVEY EVIDENCE FOUND BY THE MONROE COUNTY SUEVEYORS OFF3065152.6835ICE:**

Include, search area or areas, search procedure, etc.

Date of Field work/Search: 04/04/2021 By: CAR Monument Found: Stone BTs or Reference Objects Found: References made Project #:BeBI Stones Field Book: 54, Page 31 Notes:

Date of Field work/Search: 02/29/2024 By: MES/JMG Monument Found: Stone BTs or Reference Objects Found: Yes Project #: 2024-001 Field Book: 56, Page 7 Notes: Found Stone and references to be as described by CAR on 04/04/2021. Set Javad on stone and got same coordinate (+-0.1') as she did in 2021, noted Red oak to actually be 14" diameter and located a JK Hennessy PLS capped rebar 20.03' East of Stone.



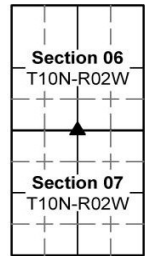
**OFFICE OF THE MONROE COUNTY SURVEYOR • Trohn Enright-Randolph**

501 N Morton Street Ste 205, Bloomington, IN 47404 • 812-349-2570 • surveyoroffice@co.monroe.in.us

Page 2 of 3

**MONUMENT RECORD**

Corner ID: **BeBI\_C05 Quarter Corner**  
Sections 6 & 7- T10N-R02W, 2nd P.M.  
Bean Blossom Township, Monroe County, Indiana.



**OTHER EVIDENCE:** Describe corner location relative to nearby features and how to reach the corner location – note fences, roads, timber cutting lines, mow lines, clearings, plantings, streams, topo changes, etc.  
Stone is in line with the extension of a north-south fence line, 3.6' south of the south edge of a wood corner post at old north-east and west fence corner.

**MONUMENT PRESERVATION:** Describe work done to preserve existing monument.  
Located and checked prior witnesses.

**THEORY OF LOCATION:** Describe the theory of location for acceptance of this monument. Include monument origin and associated uncertainty.  
Stone was found. Its location relative to occupation lines and other monumentation in and around the Section makes it, in my opinion, the most reliable evidence of the original location of the South Quarter Corner S6 and North Quarter corner Section 7, Township 10 North Range 2 West, with negligible uncertainty.

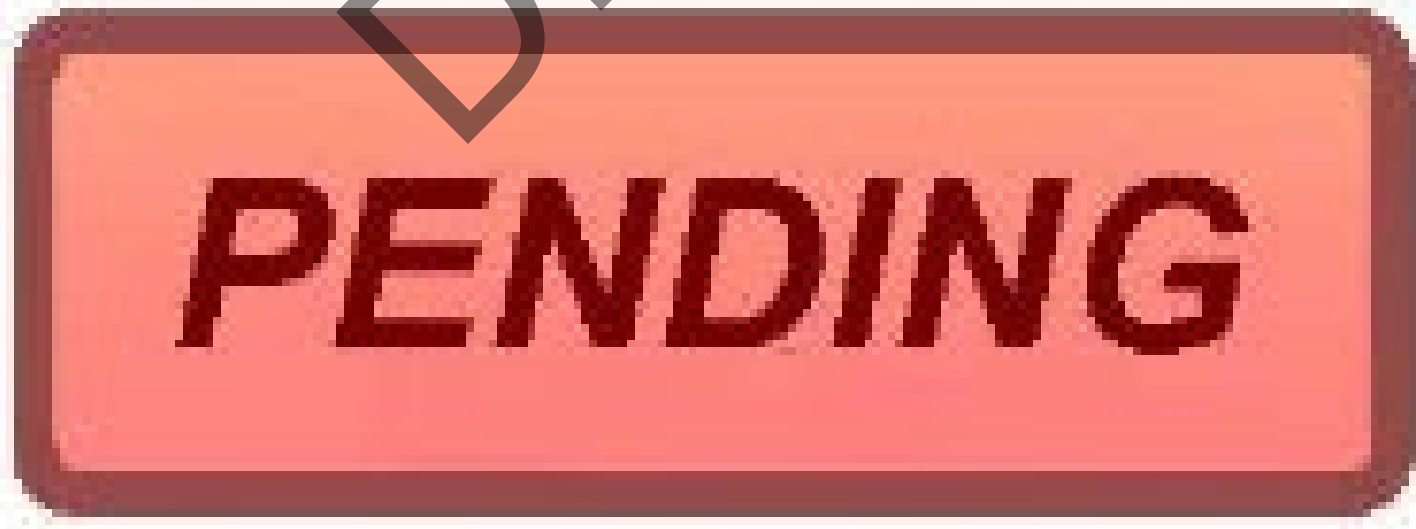
**GEODETIC COORDINATES:** Northing: 1485243.0, Easting: 3067601.6

**BASIS OF GEODETIC COORDINATES:**

The basis of bearings is Grid North NAD83(2011), Indiana West Zone, Epoch 2010.0000, Geoid Model G2012BU7, Datum NAD83\_NO\_TRANS, US Survey Feet, derived from GPS observations utilizing the Indiana Real-Time Network (INCORS). Coordinate data was collected with a Javad Triumph LS Network Rover and/or with a Sokkia Set 510 Total Station radially from points located with GPS. Distances obtained with GPS have not been adjusted to ground. To adjust grid distances to ground distances multiply them by a scale factor of 1.000041208.

This document is not complete without the associated Corner Perpetuation plat and report of survey for Section 6 or 7 Township 10 North Range 2 West by Michael E. Sheppard of the Monroe County Surveyor's Office dated xxxxxx.

**CERTIFICATIONS:**



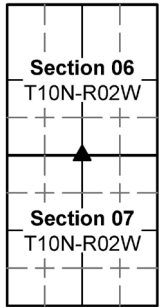


# MONUMENT RECORD

Corner ID: **BeBI\_C05**

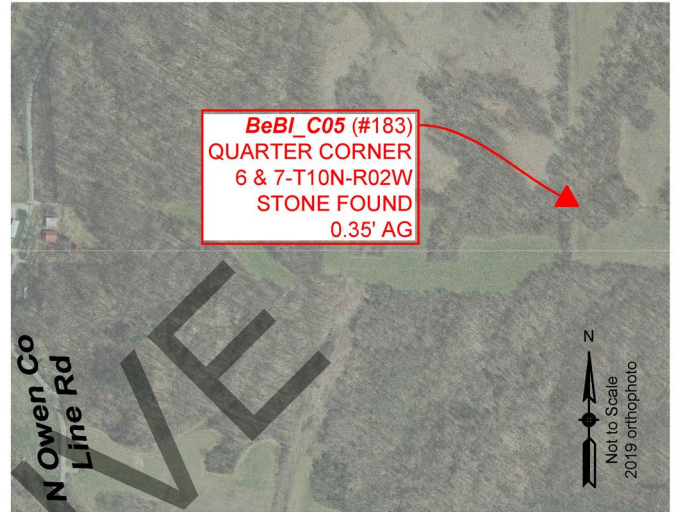
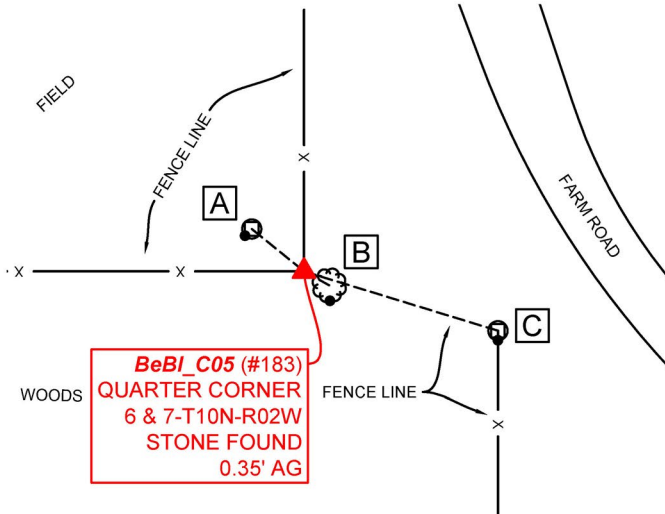
## Quarter Corner

Sections 6 & 7- T10N-R02W, 2nd P.M.  
 Bean Blossom Township, Monroe County, Indiana



**MONUMENT:** Describe monument set or found (Include material type, scribing, distance above/below grade, dimensions.)  
 0.7' x 0.35' limestone found with no markings 0.35' above grade planted solidly in the ground.

**MONUMENT LOCATION SKETCH:**



WITNESS MONUMENT TIES			
<p><i>All ties to new Bearing Trees (BTs) are a mag nail set in a 1-1/2" plastic washer stamped "SURVEY MARKER - DO NOT REMOVE" and hack mark at the root crown (less than 12" above ground) perpendicular to the center of the tree, unless otherwise noted. BT diameters are noted as dbh and are measured approximately 4.5' above ground. Bearings are measured from the monument to the center of the BT, distances are measured from the monument to the mag nail.</i></p>			
ID	BEARING	DISTANCE	DESCRIPTION
Witness A	N 51d W	7.0'	Mag nail and washer set 0.45' above grade in the southwest side of a 6" round wooden post with east/west running fence
Witness B	S 61d E	3.0'	Mag nail and washer set in scar 0.5' above grade in the south side of a 15" red oak with a Monroe County Surveyor "Protect Nearby Survey Marker" sign found 4.4' above grade facing west per 1999 monument record
Witness C	S 73d E	21.1'	Mag and washer set in the south side of a 7" round wooden post 5.1' above grade next to old nail and shiner found in the top of the post per 1999 monument record



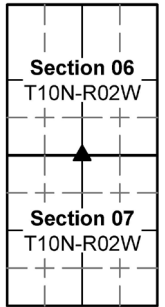


**MONUMENT RECORD**

Corner ID: **BeBI\_C05**

**Quarter Corner**

Sections 6 & 7- T10N-R02W, 2nd P.M.  
Bean Blossom Township, Monroe County, Indiana



**PHOTO IDENTIFIED:** Photo Date: 04/09/2021



Photo Orientation & Description: BeBI\_C05 from above



Photo Orientation & Description: Looking north at BeBI\_C05



Photo Orientation & Description: Looking south at BeBI\_C05



Photo Orientation & Description: Looking west at BeBI\_C05



Photo Orientation & Description: Looking east at BeBI\_C05



**OFFICE OF THE MONROE COUNTY SURVEYOR • Trohn Enright-Randolph**

119 W 7th Street, Bloomington, IN 47404 • 812-349-2570 • surveyorsoffice@co.monroe.in.us

Page 2 of 3

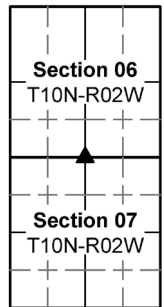


# MONUMENT RECORD

Corner ID: **BeBI\_C05**

## Quarter Corner

Sections 6 & 7- T10N-R02W, 2nd P.M.  
Bean Blossom Township, Monroe County, Indiana



**ORIGINAL OR SUBSEQUENT SURVEY EVIDENCE FOUND:** *Include, search area or areas, search procedure, etc.*

*Date of Field work/Search:* 04/04/2021 *By:* CAR *Monument Found:* Stone *BTs or Reference Objects Found:* Penny nail & shiner, wooden fence posts, Monroe County "Protect Nearby Survey Marker" sign, & old mag nail deep in scar all found per 1999 monument record  
*Project #:* BeBI Stones *Field Book:* 54/31 *Equipment:* The basis of bearings is Grid North System NAD83(2011)/Indiana West NAVD 88, Epoch 2010.0000, geoid12b\_conus.db3, US Survey Feet, derived from GPS observations utilizing the Indiana Real-Time Network (INCORS). Coordinate data was collected with a Javad Triumph LS Network Rover. Coordinates are available upon request. Distances to witness ties were collected with a Leica Disto laser distance meter. Bearings to witness ties were collected with the internal magnetic compass of the Javad Triumph LS and were automatically adjusted to grid north and are approximately shown hereon for reference. Priority should be given to provide distances over bearings. *Notes:* All witness photos on file in the Monroe County Surveyors Office. There is fence running southeast from the stone to Witness C, but it is not showing on the drawing due to not wanting to clutter the drawing.

**OTHER EVIDENCE:** *Describe corner location relative to nearby features and how to reach the corner location – note fences, roads, timber cutting lines, mow lines, clearings, plantings, streams, topo changes, etc.*

There is a north, south, and southeast running fence intersection with a 4.45" red oak east of the stone. There is a farm road northeast of the stone and a field northwest of the stone. The only way to access this area is by farm road or by foot.

**MONUMENT PRESERVATION:** *Describe work done to preserve existing monument.*

Collected new coordinates, located old witnesses/set new witnesses, flagged witnesses, tested stone with acid, & spray painted stone orange.

**THEORY OF LOCATION:** *Describe the theory of location for acceptance of this monument. Include monument origin and associated uncertainty.*

The Limestone 0.43'x0.77'x0.38' was previously witnessed and Monument Record prepared under the direction of the Monroe County Surveyor, Kevin Enright, on November 5, 1999 and accepted by the Monroe County Surveyor Review Board on January 20, 2000. The Monument Record accepted the 0.43'x0.77'x0.38' Limestone.

**CERTIFICATION:**



Date: 10/28/2021  
Trohn Enright-Randolph  
Monroe County Surveyor

Date: 10/28/2021  
Accepted by the  
Monroe County Surveyor  
Review Board



OFFICE OF THE MONROE COUNTY SURVEYOR • Trohn Enright-Randolph

119 W 7th Street, Bloomington, IN 47404 • 812-349-2570 • surveyorsoffice@co.monroe.in.us

Page 3 of 3

**MONUMENT RECORD**  
**State of Indiana - County of Monroe**

Section: 07

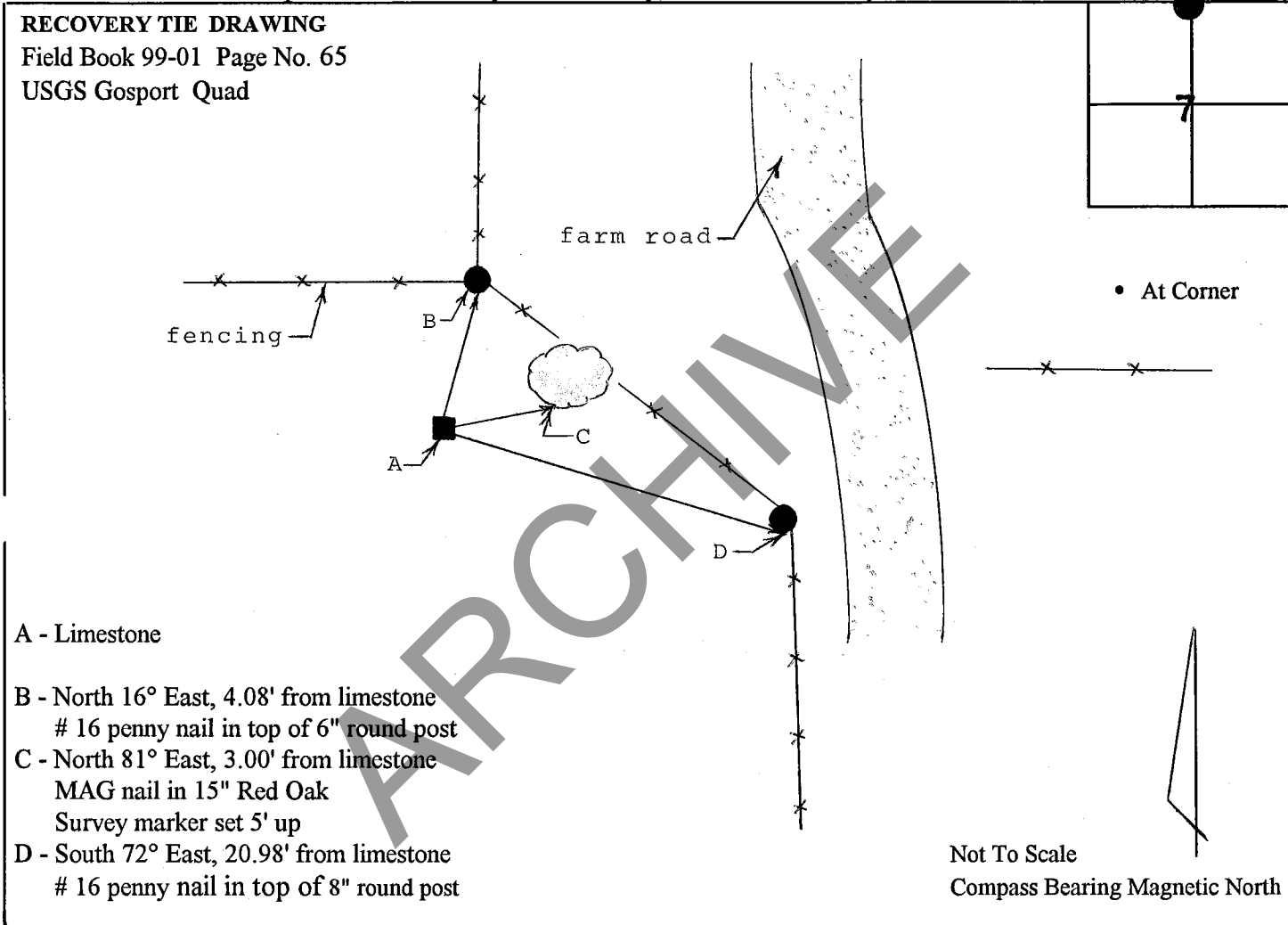
Township: 10 North

Range: 2 West

Corner ID: Be Bl C-05

**Monument Description & Remarks:** Found Limestone, no etchings, at North ¼ corner of section. Stone was well planted in ground and measured 0.38' (h) x 0.77' (l) x 0.43' (w). Witness nails with flagging found in round fence corner posts (B and D below).

**References On File:** Reported as corner by Mike Mundy, R.L.S. No survey on file.

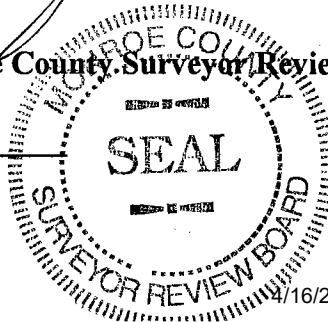


I, Kevin P. Enright, Monroe County Surveyor, hereby certify that this document was prepared under my direction in accordance with the provisions of Section 36-2-12-11 of the Indiana Code; and the above data is given under my hand and seal this 5th day of November, 1999.

*Kevin P. Enright*

Administered by the Monroe County Surveyor Review Board

Date: 1-20-00



# MONUMENT RECORD

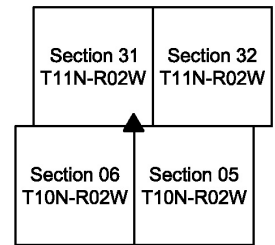
Corner ID: **BeBI\_E01**

## Section Corner

Section 5, 6- T10N-R02W, 2nd P.M.

Wayne Township, Owen County, Indiana

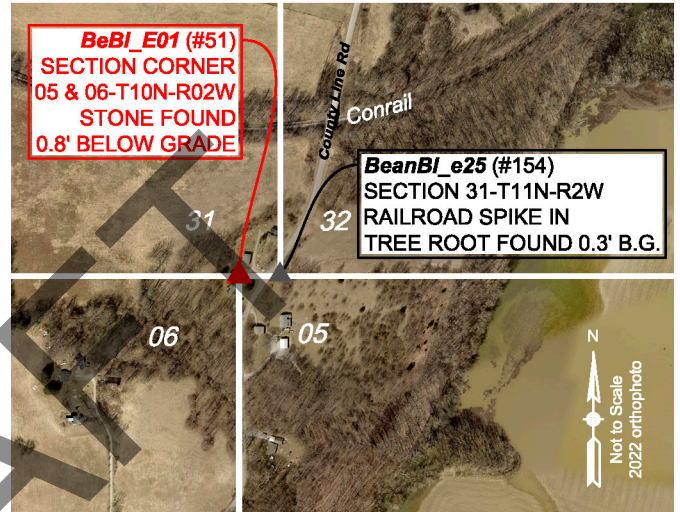
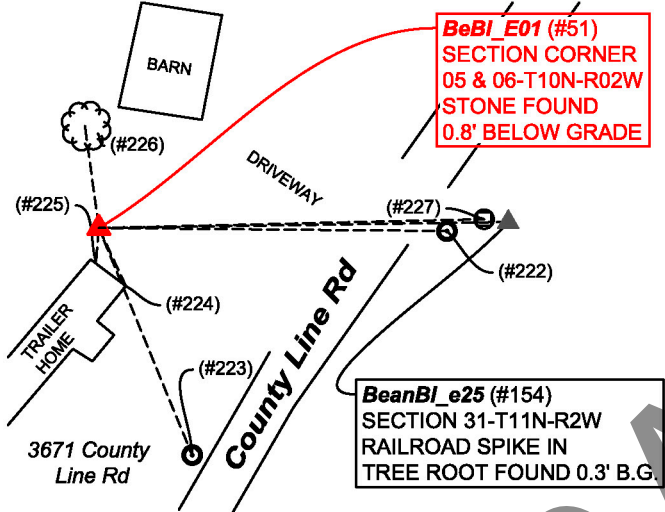
Though this corner is in Owen County, it is, in places, referred to as  
Bean Blossom Township, Monroe County, Indiana



**MONUMENT:** Describe monument set or found (Include material type, scribing, distance above/below grade, dimensions.)

1' north-south by 0.2' east-west limestone found with top 0.8' below ground, in a mowed yard. Stone had a groove across its top that we ground into a cross, which is 0.3' east of a 5/8" rebar found angling across the stones southwest side. Stone is at the east edge of the drip line of a large pine tree.

**MONUMENT LOCATION SKETCH:**



**WITNESS MONUMENT TIES:** Describe at least three new BT's (Bearing Trees) and/or witness objects established or work done to preserve existing evidence. BT diameters are noted as dbh (diameter at breast height) and are measured approximately 4.5' above ground. Bearings and Distances are measured from the monument to the center of the BT. Bearings and Distances to witness ties were measured with a Sokkia Set 510 Total Station.

ID	Bearing	Distance	Description
224	S25°0'E	26.6'	Northeast corner trailer
225	S04°46'W	13.8'	Northwest corner trailer
226	N07°46'W	42.8'	13" diameter Oak Tree
227	N88°41'E	160.3'	3" diameter round steel post with cap on top at north and east fence corner

### MONUMENT ACCESSORIES

*Other survey grade monuments that were located in the vicinity and their relation to the monument.*

(#54)	N 89d09'44" E	170.38'	N:1490808.5406' E:3070333.0566 ' Railroad spike found in tree root, in E-W fence, 0.3' B.G.
(#222)	S 89d30'30" E	144.77'	N:1490804.8071' E:3070307.4645' 6" long magnetic nail set 0.1' B.G.
(#223)	S 22d21'20" E	102.02'	N: 1490711.7012' E: 3070201.4977' 6" long magnetic nail set 0.1' B.G.



**OFFICE OF THE MONROE COUNTY SURVEYOR • Trohn Enright-Randolph**

501 N Morton Street Ste 205, Bloomington, IN 47404 • 812-349-2570 • surveyorsoffice@co.monroe.in.us

Page 1 of 4



**MONUMENT RECORD**

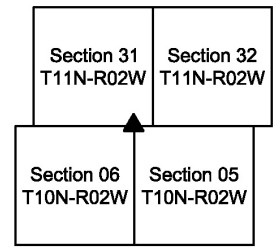
Corner ID: **BeBI\_E01**

**Section Corner**

Section 5, 6- T10N-R02W, 2nd P.M.

Wayne Township, Owen County, Indiana

Though this corner is in Owen County, it is, in places, referred to as  
Bean Blossom Township, Monroe County, Indiana



**PHOTO IDENTIFIED:** Photo Date: 02/27/2024



Photo Orientation & Description: Standing over stone



Photo Orientation & Description: From North looking South

**EXISTING SURVEY HISTORY** Include as much detail and history of the corner as known at the time of perpetuation

**ORIGINAL GOVERNMENT SURVEY:**

Year Surveyed: 1815 By: William Harris Deputy Surveyor

Where filed or recorded: Original Notes Page 266

Original monument: post

Bearing Trees or Reference Monuments:

Species	Dia.	Bearing	Distance
Beech	12"	S54W	41 links
Beech	7"	N49°E	13 links

Notes:

**SUBSEQUENT CORNER RESTORATION:**

Date Surveyed: Oct. 16, 1900. By: unreadable signature Owen County Surveyor.

Where filed or recorded: Owen County Survey Book 2, page 374.

Original monument: cited as perpetuated from lap corner to the East, but monument type not noted.

Bearing Trees or Reference Monuments:

Species	Dia.	Bearing	Distance
Beech	24"	N43°E	45 links
		°	

Notes:



**OFFICE OF THE MONROE COUNTY SURVEYOR • Trohn Enright-Randolph**

501 N Morton Street Ste 205, Bloomington, IN 47404 • 812-349-2570 • surveyorsoffice@co.monroe.in.us

Report Sheet# 20 of 30

Page 2 of 4

**MONUMENT RECORD**

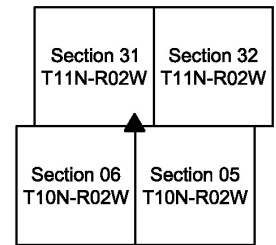
Corner ID: **BeBI\_E01**

**Section Corner**

Section 5, 6- T10N-R02W, 2nd P.M.

Wayne Township, Owen County, Indiana

Though this corner is in Owen County, it is, in places, referred to as  
Bean Blossom Township, Monroe County, Indiana



**OTHER SURVEY HISTORY:** *Include details such as surveyor name, date, recording info, monument description, etc.*

Document Date	Survey ID	Surveyor	Description	InstrumentNo
6/12/2004	RSID002183	Sheppard, Michael E.	Plat of Section Corner Re-Establishment Survey. Owen/Monroe Line.	
1/29/2015	RSID005384	Meier, David R.	Lowe County Line Retracement Survey	201917.IN

**ORIGINAL OR SUBSEQUENT SURVEY EVIDENCE FOUND:** *Include, search area or areas, search procedure, etc.*

*Date of Field work/Search: 1/26/2024 By: MES/JMG Monument Found: Stone BTs or Reference Objects Found: New references made Project #: 24-001 Field Book: 55, page 66. Notes:*

**OTHER EVIDENCE:** *Describe corner location relative to nearby features and how to reach the corner location – note fences, roads, timber cutting lines, mow lines, clearings, plantings, streams, topo changes, etc.* Stone is in the yard of a trailer at 3671 County Line Road, Gosport In. There are no occupation lines in the immediate vicinity of the stone, though it appears to be in general harmony with the extension of an old east bound fence line on the east side of the road.

**MONUMENT PRESERVATION:** *Describe work done to preserve existing monument.*

I had set the rebar beside the stone in a prior survey, so it would be detectable with a magnetic locator. Stone was dug up, GPS located, photographed and references made to it.

**THEORY OF LOCATION:** *Describe the theory of location for acceptance of this monument. Include monument origin and associated uncertainty.*

Found, stone has been used by myself in prior surveys and by others, based on the stone's location relative to other old monuments and occupation lines in the area, it is, in my opinion, the most reliable evidence of the originally established location of the Northeast corner of Section 6/Northwest corner Section 5, with negligible uncertainty.

**GEODETIC COORDINATES:** *Northing: 1490806.0, Easting: 3070162.7*

**BASIS OF GEODETIC COORDINATES:**

The basis of bearings is Grid North NAD83(2011), Indiana West Zone, Epoch 2010.0000, Geoid Model G2012BU7, Datum NAD83\_NO\_TRANS, US Survey Feet, derived from GPS observations utilizing the Indiana Real-Time Network (INCORS). Coordinate data was collected with a Javad Triumph LS Network Rover and/or with a Sokkia Set 510 Total Station radially from points located with GPS. Distances obtained with GPS have not been adjusted to ground. To adjust grid distances to ground distances multiply them by a scale factor of 1.000041208

This document is not complete without the associated Corner Perpetuation plat and report of survey for Section 5 or 6, Township 11 North Range 2 West, by Michael E. Sheppard of the Monroe County Surveyor's Office dated xxxxxx.



**OFFICE OF THE MONROE COUNTY SURVEYOR • Trohn Enright-Randolph**

501 N Morton Street Ste 205, Bloomington, IN 47404 • 812-349-2570 • surveyoroffice@co.monroe.in.us

**MONUMENT RECORD**

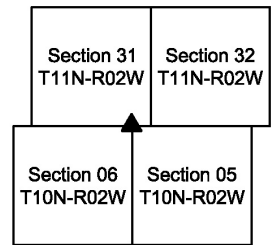
Corner ID: **BeBI\_E01**

**Section Corner**

Section 5, 6- T10N-R02W, 2nd P.M.

Wayne Township, Owen County, Indiana

Though this corner is in Owen County, it is, in places, referred to as  
Bean Blossom Township, Monroe County, Indiana



**CERTIFICATIONS:**



**OFFICE OF THE MONROE COUNTY SURVEYOR • Trohn Enright-Randolph**

501 N Morton Street Ste 205, Bloomington, IN 47404 • 812-349-2570 • surveyorsoffice@co.monroe.in.us

Page 4 of 4

Report Sheet# 22 of 30

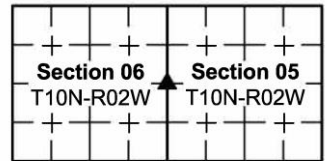
**MONUMENT RECORD**

Corner ID: **BeBI\_E03**

**Quarter Corner**

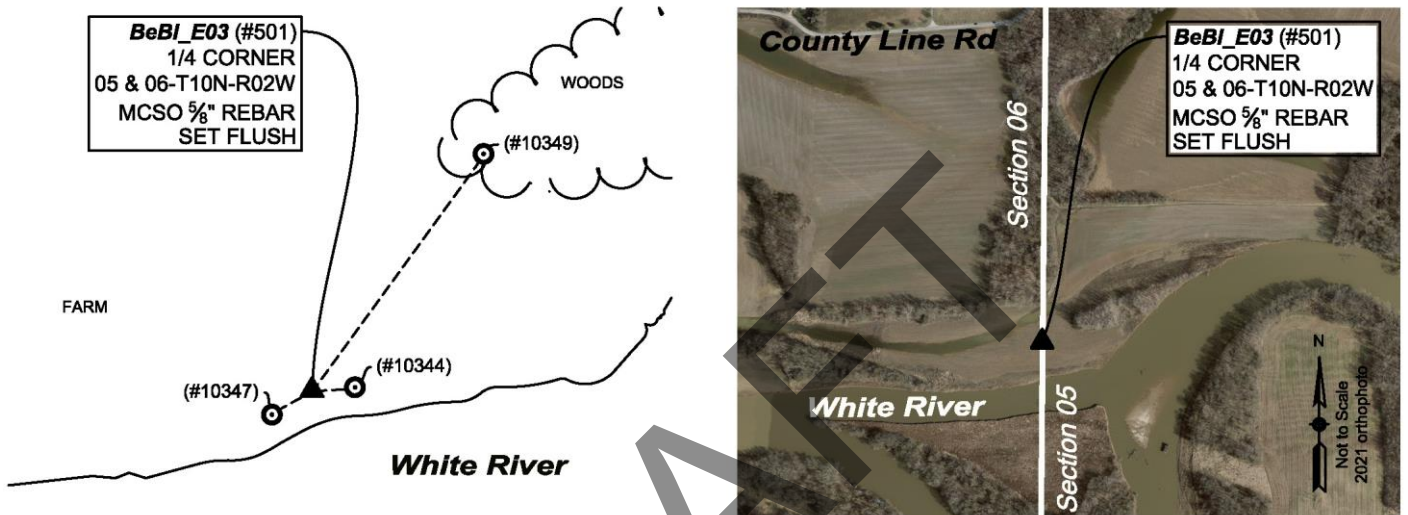
Sections 5, 6, - T10N-R02W, 2nd P.M.

Bean Blossom Township, Monroe County, Indiana



**MONUMENT:** Describe monument set or found (Include material type, scribing, distance above/below grade, dimensions.)  
 5/8" rebar (24" long) with 2" diameter aluminum cap inscribed MONROE COUNTY SURVEYORS OFFICE SHEPPARD PLS #20100021, set flush with ground, 3' south of the south edge of a farm field, 25' north of the north top of bank of white river.

**MONUMENT LOCATION SKETCH:**



DRAFT

MONUMENT ACCESSORIES			
Other survey grade monuments that were located in the vicinity and their relation to the monument. Witnesses noted as a Rebar Lite are a 5/8" diameter by 16" polycarbonate rod with a 1-1/2" mag nail in top and yellow plastic cap stamped "MONROE COUNTY WITNESS POINT" set 0.1 foot below grade unless otherwise noted.			
<i>Geodetic coordinates in this table are provided in the format Northing, Easting.</i>			
(#10344)	N 86d51'31" E	34.02'	N:1487964.1629' E:3070238.9405' Rebar Lite set 0.1' below ground
(#10347)	S61d06'55" W	39.22'	N:1487943.3518' E:3070170.6274 Rebar Lite set 0.1' below ground
(#10349)	N35d59'34" E	294.71'	N:1488200.7425' E:3070378.164' Rebar Lite set 0.1' below ground



**OFFICE OF THE MONROE COUNTY SURVEYOR • Trohn Enright-Randolph**

501 N Morton Street Ste 205, Bloomington, IN 47404 • 812-349-2570 • surveyorsoffice@co.monroe.in.us

Report Sheet# 23 of 30

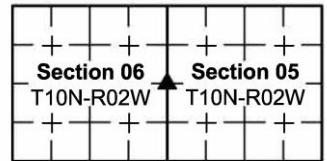


**MONUMENT RECORD**

Corner ID: **BeBI\_E03**

**Quarter Corner**

Sections 5, 6, - T10N-R02W, 2nd P.M.  
Bean Blossom Township, Monroe County, Indiana



**PHOTO IDENTIFIED:** Photo Date: 03/04/2024



Photo Orientation & Description: From above



Photo Orientation & Description: From West looking East

**EXISTING SURVEY HISTORY** Include as much detail and history of the corner as known at the time of perpetuation

**ORIGINAL GOVERNMENT SURVEY:**

Year Surveyed: 1815 By: William Harris Deputy Surveyor  
Where filed or recorded: Original notes page 266  
Original monument: 12" diameter Elm tree at original corner  
Bearing Trees or Reference Monuments:

Species	Dia.	Bearing	Distance
None given		°	
		°	

Notes:

**SUBSEQUENT CORNER RESTORATION:**

None Found

**OTHER SURVEY HISTORY:** Include details such as surveyor name, date, recording info, monument description, etc.

None Found

**ORIGINAL OR SUBSEQUENT SURVEY EVIDENCE FOUND BY THE MONROE COUNTY SURVEYORS OFFICE:** Include, search area or areas, search procedure, etc.

Date of Field work/Search: 3/06/2024 By: MES/JMG Monument Found: set Rebar BTs or Reference Objects Found: references made this survey. Project #: 24-001 Field Book: 56, pages 13 & 14. Notes:

**OTHER EVIDENCE:** Describe corner location relative to nearby features and how to reach the corner location – note fences, roads, timber cutting



**OFFICE OF THE MONROE COUNTY SURVEYOR • Trohn Enright-Randolph**

501 N Morton Street Ste 205, Bloomington, IN 47404 • 812-349-2570 • surveyorsoffice@co.monroe.in.us

Report Sheet# 24 of 30

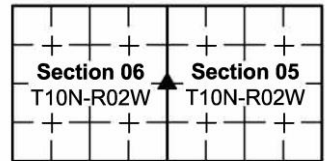
**MONUMENT RECORD**

Corner ID: **BeBI\_E03**

**Quarter Corner**

Sections 5, 6, - T10N-R02W, 2nd P.M.

Bean Blossom Township, Monroe County, Indiana



*lines, mow lines, clearings, plantings, streams, topo changes, etc.*

The rebar is near the north top of bank of white river. We accessed the location by driving down (south) a farm lane that takes from a 90-degree curve on County line Road, where said road turns away from the east line of Section 6/west line of Section 5. We drove south on said farm lane, through some woods to the east edge of the woods, where the farm lane turns east. We parked at the edge of the woods and walked down the east side of said woods approximately 850' to the corner.

**MONUMENT PRESERVATION:** *Describe work done to preserve existing monument.*

Rebar was set. 3 rebar lites were set within sight of the monument, that could be used to reestablish the monuments' location should it become obliterated. 2 reference trees were located for a visual aid in finding the monument.

**THEORY OF LOCATION:** *Describe the theory of location for acceptance of this monument. Include monument origin and associated uncertainty.*

The corner was determined as a lost Section corner. A lost Section corner is defined as a corner whose original position cannot be determined by substantial evidence, either from traces of the original mark or from acceptable evidence or reliable testimony that bears upon the original position, and whose location can be restored only by reference to one or more interdependent corners. The rebar was set on line between a stone found at the Northeast corner Section 6/Northwest corner Section 5 and a rebar set (in place of a found and removed nail) at the Southeast corner Section 6/ Southwest corner Section 5 and at a proportional split of the record vs measured dimension on and along said Section line, per the procedures set forth by the bureau of land management for establishment of a lost Section corner. It is noteworthy and peculiar that the original BLM notes and BLM plat for this line cite a distance of 80.91 chains (5340.06') for the Section line whereas the distance measured this survey was 5624.87' for a substantial difference (284.81') and even more peculiar that the original plat shows the north to south mid line of Section 6 as 84.74 chains (5592.84'), not significantly (subjective to opinion) different from the 5528.18' measured on and along said line this survey. As such I concluded a significant error of some kind took place in the original measurement, or documentation of the original measurement, of the East line Section 6/West line Section 5. I can only hypothesize that the error likely took place at the river, but without any conclusive evidence of this hypothesis, I felt the corner at BeBI\_E03 had to be set proportionally from the record dimensions. There is undoubtedly significant, unresolvable uncertainty that this is truly where the corner was originally set.

**GEODETIC COORDINATES:** *Northing: 1487962.3, Easting: 3070205.0*

**BASIS OF GEODETIC COORDINATES:**

The basis of bearings is Grid North NAD83(2011), Indiana West Zone, Epoch 2010.0000, Geoid Model G2012BU7, Datum NAD83\_NO\_TRANS, US Survey Feet, derived from GPS observations utilizing the Indiana Real-Time Network (INCORS). Coordinate data was collected with a Javad Triumph LS Network Rover and/or with a Sokkia Set 510 Total Station radially from points located with GPS. Distances obtained with GPS have not been adjusted to ground. To adjust grid distances to ground distances multiply them by a scale factor of 1.000041208.

This document is not complete without the associated Corner Perpetuation plat and report of survey for Section 5 or Section 6, Township 10 North Range 2 West, by Michael E. Sheppard of the Monroe County Surveyor's Office dated xxxxxx.

**CERTIFICATIONS:**



**OFFICE OF THE MONROE COUNTY SURVEYOR • Trohn Enright-Randolph**

501 N Morton Street Ste 205, Bloomington, IN 47404 • 812-349-2570 • surveyorsoffice@co.monroe.in.us

Page 3 of 3





**MONUMENT RECORD**

Corner ID: **BeBI\_E05**

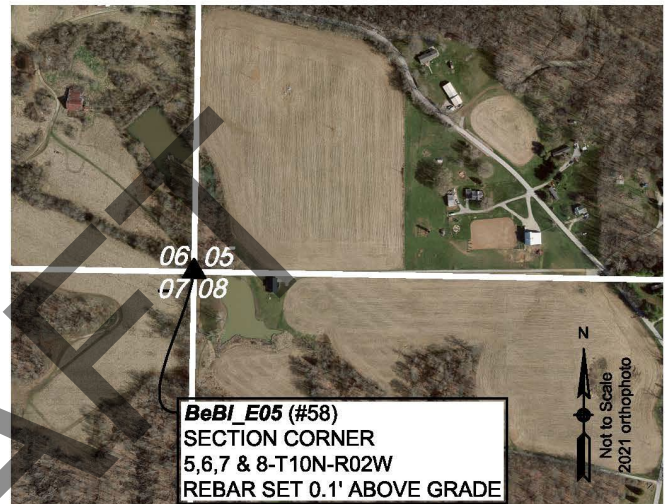
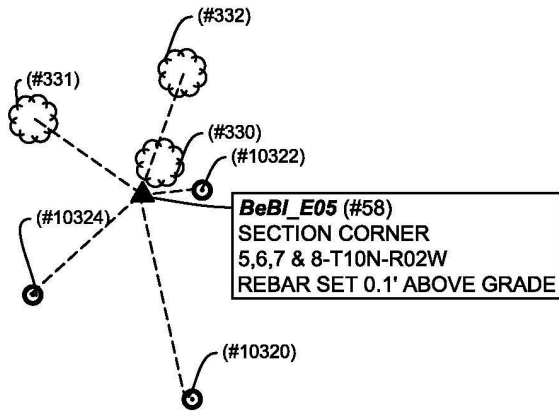
**Section Corner**

Sections 5, 6, 7 & 8- T10N-R02W, 2nd P.M.  
 Bean Blossom Township, Monroe County, Indiana

Section 06 T10N-R02W	Section 05 T10N-R02W
Section 07 T10N-R02W	Section 08 T10N-R02W

**MONUMENT:** Describe monument set or found (Include material type, scribing, distance above/below grade, dimensions.)  
 5/8" rebar (24" long) with 2" diameter aluminum cap set, with top left 0.1' above ground, in the hole formed from a large nail found and removed. The rebar is in an old north-south fence remnant line, 1.6' south of the center of a wood corner post at north-south and northwest fence corner.

**MONUMENT LOCATION SKETCH:**



**PHOTO IDENTIFIED:** Photo Date: 03/04/2024



Photo Orientation & Description: From above, showing nail removed and rebar set in its former location.



Photo Orientation & Description: From Southwest looking Northeast, showing rebar set and engraved stone found lying on ground.



**OFFICE OF THE MONROE COUNTY SURVEYOR • Trohn Enright-Randolph**

501 N Morton Street Ste 205, Bloomington, IN 47404 • 812-349-2570 • surveyorsoffice@co.monroe.in.us

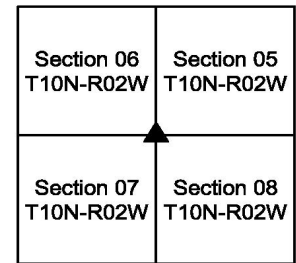


# MONUMENT RECORD

Corner ID: **BeBI\_E05**

## Section Corner

Sections 5, 6, 7 & 8- T10N-R02W, 2nd P.M.  
Bean Blossom Township, Monroe County, Indiana



**ORIGINAL GOVERNMENT SURVEY:**

Year Surveyed: 1815 By: William Harris Deputy Surveyor  
Where filed or recorded: Monroe County original notes page 265.  
Original monument: post  
Bearing Trees or Reference Monuments:

Species	Dia.	Bearing	Distance
Beech	8"	N44°W	6 Links
Beech	14"	S72°E	21 Links

Notes:

**SUBSEQUENT CORNER RESTORATION:**

Date Surveyed: April 15, 1891. By: George B Rader, Monroe County Surveyor  
Where filed or recorded: Legal Survey Book 2, page 503.  
Original monument: Not noted.  
Bearing Trees or Reference Monuments:

Species	Dia.	Bearing	Distance
Elm	14"	N87 1/2°E	26 1/2 Links
Wild Cherry	4"	N14 1/2°W	91 1/2 Links

Notes: Mr. Rader perpetuated the corner due to no evidence of its original location.

**WITNESS MONUMENT TIES:** Describe at least three new BT's (Bearing Trees) and/or witness objects established, or work done to preserve existing evidence. BT diameters are noted as dbh (diameter at breast height) and are measured approximately 4.5' above ground. Bearings and Distances are measured from the monument to the center of the BT. Bearings and Distances to witness ties were measured with a Sokkia Set 510 Total Station.

ID	Bearing	Distance	Description
330	N30°06'E	1.8'	15" diameter sassafras tree
331	N54°37'W	28.1	18" diameter wild cherry tree
332	N19°12'E	27.3'	13" diameter sugar maple tree

### MONUMENT ACCESSORIES

Other survey grade monuments that were located in the vicinity and their relation to the monument. Witnesses noted as a Rebar Lite are a 5/8" diameter by 16" polycarbonate rod with a 1-1/2" mag nail in top and yellow plastic cap stamped "MONROE COUNTY WITNESS POINT" set 0.1 foot below grade unless otherwise noted.

Geodetic coordinates in this table are provided in the format Northing, Easting.

10320	N 28d43'42" E	57.94'	N:1485131.0019' E:3070274.1524' Rebar lite set 0.1' below ground
10321	N 77d55'11" E	30.61'	N:1485175.3995' E:3070276.2390' Rebar lite set 0.1' below ground
10322	S 15d18'21" W	31.71'	N:1485160.7174' E:3070222.6249' Rebar lite set 0.1' below ground

**OTHER SURVEY HISTORY:** Include details such as surveyor name, date, recording info, monument description, etc.

Date	RSID	Surveyor	Description	File Location
7/6/1978	RSID004169	Farkas, Edmund O.	5.01 acre survey	
10/31/2022	RSID004993	Deckard, Eric Lee	Lori A. McBride properties, LLC - Boundary Survey Lot Number One in Orville Hunter Minor Subdivision	2022016070.IN



**OFFICE OF THE MONROE COUNTY SURVEYOR • Trohn Enright-Randolph**

501 N Morton Street Ste 205, Bloomington, IN 47404 • 812-349-2570 • surveyoroffice@co.monroe.in.us

# MONUMENT RECORD

Corner ID: **BeBI\_E05**

## Section Corner

Sections 5, 6, 7 & 8- T10N-R02W, 2nd P.M.  
Bean Blossom Township, Monroe County, Indiana

Section 06 T10N-R02W	Section 05 T10N-R02W
Section 07 T10N-R02W	Section 08 T10N-R02W

**ORIGINAL OR SUBSEQUENT SURVEY EVIDENCE FOUND BY THE MONROE COUNTY SURVEYORS OFFICE:** *Include, search area or areas, search procedure, etc.*

*Date of Field work/Search:* 02/05/1997 *By:* Kevin Enright/Alan McClain. *Monument Found:* Nail *BTs or Reference Objects Found:* Notes nail found at rotted off corner post, and a stone found approximately 45' South, brought back and laid by nail. No other ties made at that time. *Project #:* 97-01 *Field Book:* 26, page 39. *Notes:* cites nail as barn nail.

**ORIGINAL OR SUBSEQUENT SURVEY EVIDENCE FOUND BY THE MONROE COUNTY SURVEYORS OFFICE:** *Include, search area or areas, search procedure, etc.*

*Date of Field work/Search:* 11/05/1999 *By:* Kevin Enright/Corbin Baird. *Monument Found:* Nail *BTs or Reference Objects Found:* mag nails set in 3 trees. *Project #:* 99-01 *Field Book:* 26, page 39 *Notes:* cites nail as 20 penny nail.

**ORIGINAL OR SUBSEQUENT SURVEY EVIDENCE FOUND BY THE MONROE COUNTY SURVEYORS OFFICE:** *Include, search area or areas, search procedure, etc.*

*Date of Field work/Search:* 02/29/2024 & 3/04/2024 *By:* MES/JMG *Monument Found:* Large Nail *BTs or Reference Objects Found:* though the mag nails had been absorbed into the trees, 2 of the reference trees tied in Mr. Enright's 1999 project were located. *Project #:* 24-001 *Field Book:* 56, pages 7,8 &10. *Notes:* replaced found nail with rebar.

**OTHER EVIDENCE:** *Describe corner location relative to nearby features and how to reach the corner location – note fences, roads, timber cutting lines, mow lines, clearings, plantings, streams, topo changes, etc.*

Rebar is 1.6' south of a north-south-northwesterly fence corner. There is a stone lane that runs from Texas Ridge road, along the north end of the parcel of land at 9241 N Texas Ridge Road, to a Building (apparent weekend retreat) at 9251 N Texas Ridge Road. From the north side of said building continue west along the north side of a pond/south side of a tree/fence line approximately 320' to the corner.

**MONUMENT PRESERVATION:** *Describe work done to preserve existing monument.*

Found nail was replaced by a capped rebar. 3 rebar lites were set within view of rebar that could be used to reestablish its location should it become obliterated. Trees were also located as visual references to aid in finding the rebar. A steel post with Monroe County Survey Marker sign was set 3.3' above ground, facing west, 0.4' west of the rebar.

**THEORY OF LOCATION:** *Describe the theory of location for acceptance of this monument. Include monument origin and associated uncertainty.*

The nail found this survey appears to be the same nail found by Monroe County Surveyor Kevin Enright on February 5, 1997, per field book #26 (97-01), page 39, in the Monroe County surveyors office. At a visual look of the area, I first thought it odd that the nail was 1.6' south of the fence corner, but in Mr. Enright's 1997 notes, he notes "barn nail in ground at old fence post corner, railroad tie well weathered and rotted off at bottom". As such it appears that there was an older corner post at this location in 1997, that is now gone, at the corner of old north-south and east fences. Mr. Enright also notes an old limestone corner stone found lying on the ground approximately 45' to the south, with a cross on it. He then notes picking the stone up and moving the stone and laying it by the nail. Mr. Enright revisited the location on November 5, 1999, per field book #31 (99-01), page 64, in the Monroe County surveyor's office and made references to the nail, then citing it as a 20-penny nail. He also notes moving the old corner stone lying on the ground and leaning it against a corner post. The stone appears to have been kicked around a couple times since then and was observed laying on the ground to the Northwest. The stone has been called a corner stone and used by at least 2 different surveyors in modern history. I probed around the nail in hopes perhaps there was still a base of the old stone left buried but found nothing. I did observe the ground around the nail was very soft, leading me to hypothesis this is where the old corner post that used to be at the old north-south-east fence intersection was.

**GEODETIC COORDINATES:** *Northing:* 1485181.8' *Eastng:* 3070246.3'

**BASIS OF GEODETIC COORDINATES:**



OFFICE OF THE MONROE COUNTY SURVEYOR • Trohn Enright-Randolph

501 N Morton Street Ste 205, Bloomington, IN 47404 • 812-349-2570 • surveyorsoffice@co.monroe.in.us

Page 3 of 4

**MONUMENT RECORD**

Corner ID: **BeBI\_E05**

**Section Corner**

Sections 5, 6, 7 & 8- T10N-R02W, 2nd P.M.  
Bean Blossom Township, Monroe County, Indiana

Section 06 T10N-R02W	Section 05 T10N-R02W
Section 07 T10N-R02W	Section 08 T10N-R02W

The basis of bearings is Grid North NAD83(2011), Indiana West Zone, Epoch 2010.0000, Geoid Model G2012BU7, Datum NAD83\_NO\_TRANS, US Survey Feet, derived from GPS observations utilizing the Indiana Real-Time Network (INCORS). Coordinate data was collected with a Javad Triumph LS Network Rover and/or with a Sokkia Set 510 Total Station radially from points located with GPS. Distances obtained with GPS have not been adjusted to ground. To adjust grid distances to ground distances multiply them by a scale factor of 1.000041208.

This document is not complete without the associated Corner Perpetuation plat and report of survey for Section 5 or 6 or 7 or 8, T10N R2W by Michael E. Sheppard of the Monroe County Surveyor's Office dated xxxxxx.

**CERTIFICATIONS:**



**OFFICE OF THE MONROE COUNTY SURVEYOR • Trohn Enright-Randolph**

501 N Morton Street Ste 205, Bloomington, IN 47404 • 812-349-2570 • surveyoroffice@co.monroe.in.us

Report Sheet# 30 of 30

Page 4 of 4

**MONUMENT RECORD**  
**State of Indiana - County of Monroe**

Section: 07

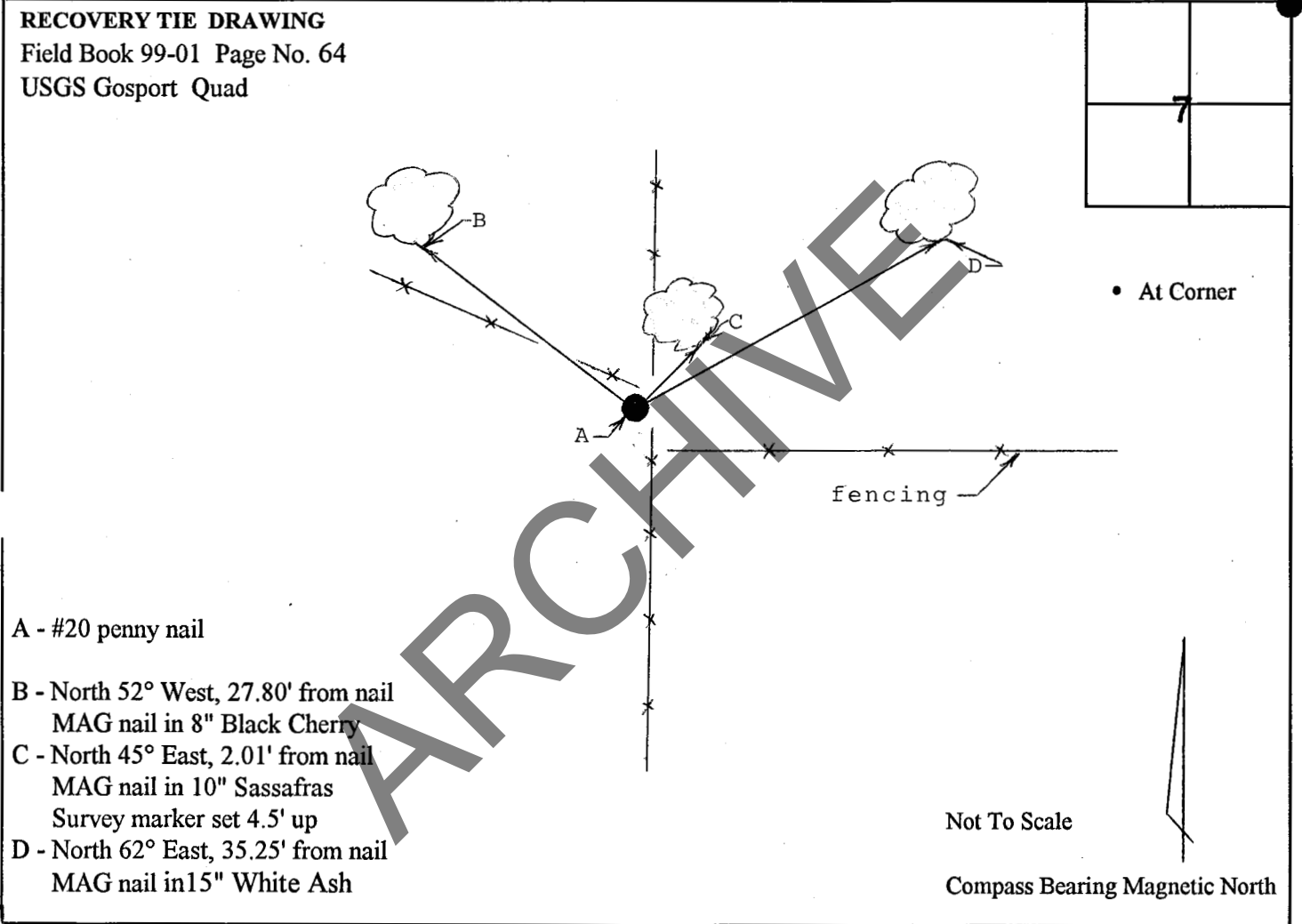
Township: 10 North

Range: 2 West

Corner ID: Be Bl E-05

**Monument Description & Remarks:** Found #20 penny nail wrapped in pink flagging at NE corner of section.  
 Old survey monument sandstone with "x" (measuring 1.58' x 0.60' x 0.39') found laying on ground nearby.  
 Leaned stone against fence corner post just north of #20 penny nail.

**References On File:** No survey on file.



I, Kevin P. Enright, Monroe County Surveyor, hereby certify that this document was prepared under my direction in accordance with the provisions of Section 36-2-12-11 of the Indiana Code; and the above data is given under my hand and seal this 5th day of November, 1999.

*Kevin P. Enright*  
 \_\_\_\_\_



Administered by the Monroe County Surveyor Review Board

Date: 1-20-00

