



AGENDA
SURVEYOR REVIEW BOARD
HYBRID MEETING
Via Microsoft Teams
Tuesday, June 18, 2024

- I. Call to Order**
- II. Approval of agenda**
- III. Approval of minutes from April 16, 2024**
- IV. New Business**
 - a. Office Update
- V. Certification of corners:**
 - a. Corner Documentation Program: **N/A**
 - b. County Surveyor Perpetuation: **BeanBl_i21*, BeanBl_i23*, BeanBl_i25*, BeanBl_k21*, BeanBl_k23*, BeanBl_k25, BeanBl_m21*, BeanBl_m23*, BeanBl_m25**
 - c. Professional Services Agreement: **N/A**
- VI. Public input**
- VII. Adoption of next meeting date**
- VIII. Adjournment**

**Has no previous certification*

Teams Meeting Information

https://teams.microsoft.com/l/meetup-join/19%3ameeting_MzRkODI1M2QzMjVjYkYS00NDdjLTk5NjktOGE2Mzg2NWFhNTQx%40thread.v2/0?context=%7b%22id%22%3a%2249a60700-4c0c-4ece-b904-fb92c600e553%22%2c%22oid%22%3a%22db83725f-c48f-476f-8894-d4bb087d29f8%22%7d

Meeting ID: 247 640 086 109

Passcode: BTv9wR

Or call in (audio only)

[+1 872-242-9432,225452587#](tel:+1872-242-9432,225452587#) United States, Chicago

[Find a local number](#) [Reset PIN](#)

The meeting is open to the public. Dates are subject to change.

For additional information, please call the Office of the Monroe County Surveyor at (812) 349-2570.

Anyone who requires an auxiliary aid or service for effective communication, or a modification of policies or procedures to participate in a program, service, or activity of Monroe County, should contact Monroe County Title VI Coordinator, (812) 349-2553, as soon as possible but no later than forty-eight (48) hours before the scheduled event.

Individuals requiring special language services should, if possible, Government Title VI Coordinator at least seventy-two (72) hours prior to the date on which the services will be needed.

Survey Utility



MEETING MINUTES
SURVEYOR REVIEW BOARD
501 N. Morton Ave. Room 211
HYBRID MEETING Via Teams App
Tuesday, April 16, 2024, 4:00 PM

MEMBERS PRESENT: Rachel Oser, Eric Deckard, Todd Borgman

STAFF: Trohn Enright-Randolph (County Surveyor), Jason George (Survey Technician), Mike Sheppard (Professional Surveyor), Donna Barbrick (Secretary)

- I. Call to Order by Trohn at 4:01 pm**
- II. Approval of agenda. Motion to approve: Todd Borgman; seconded by Rachel Oser. VOTE: AYE (unanimous). Motion carried.**
- III. Approval of minutes from March 19, 2024. Motion to approve: Todd Borgman; second by Rachel Oser. VOTE: AYE (unanimous). Motion carried.**
- IV. New Business**
 - a. Office Update**

Trohn said today we are here to present section corners for certification that have been done with Michael Sheppard. He said it has been a while since we have been able to do this in-house. He said we are offering a job for a part-time field assistant and I think he will be a great addition to the team.

Mr. Deckard arrived at the meeting at approximately 4:06 pm.

- V. Certification of corners:**
 - a. Corner Documentation Program: N/A**
 - b. County Surveyor Perpetuation: TwpCor_XVIII*, BeBl_A03*, BeBl_A05, BeBl_C01*, BeBl_C05, BeBl_E01*, BeBl_E03* & BeBl_E05**
 - c. Professional Services Agreement: N/A**

TwpCor_XVIII*. Mike Sheppard said back in '04 I did a survey for Owen County Surveyor's Office, and we had found a pipe there and there was a stone laying beside it. He said the farmer told me that some other farmer had dug the stone out. He said I don't know who put the pipe there, but it fit with everything. He said it laid on top of the ground and a big hunk of concrete. He said we found the same two control nails, twenty years old. He said we ended up re-establishing it from the same control I had before, dug down about a foot and a half below ground. He said we hit a big chunk of concrete. He said we initially put a Harrison monument on it, which stuck up and we decided that wasn't going to work. He said so we drilled, filled a hole in the concrete and stuck a rebar in there (instead).

BeBl_E01. Sheppard said this is the northeast corner, a stone that he shot once in '04 and he put a rebar by it. He said he did not see any uncertainty with that. He said it is in the middle of someone's yard.

BeBl_C01. Sheppard said he had established a midpoint. He said this was a buried Harrison monument in a crop field. He said at one time the White River changed course and someone buried a bunch of stones in the old riverbed. He said it is generally assumed that the river is the county line. He said our utility program shows them as our responsibility. There was a discussion about where the county line is. Trohn had a question about an label on the tie sheet.

BeBl_E05. Sheppard said Kevin Enright had been out there two times and he called it a barn nail one time and another time a penny nail. The nail in question was brought to the meeting for SRB members to inspect. He said we yanked it out and put in a rebar. Sheppard said there was a nice stone that was laying on the ground and he moved it by the nail and laid it down there. He referred to Kevin's old notes (1997) about a fence post that is no longer there. He said we probed around and found ground that was soft around the old nail. Trohn said the theory of location is pretty detailed on the new tie sheet.

BeBl_E03. Sheppard said this one was figured proportionally. He said I checked a couple versions of the government notes and the plat. He said it was a corner with no lines of occupation. It was remarked that it appears that the river has changed course at least a couple of times. He said I did not put a post on this one. He said technically it is in Owen County. There was a discussion about having a conversation with Owen County about signage. Trohn said our goal is to preserve these.

BeBl_C05. Sheppard said we just did a few minor changes to the tie sheet. Trohn said this one now has Mr. Sheppard's seal and we have geodetic controls as well. He said it now meets the standards that we are striving for.

BeBl_A05. Sheppard talked about the history of this corner, saying Mike Mundy found an old post there. He said Kevin Enright had witnessed a rebar as the corner instead of the post that Mr. Mundy had set previously. Trohn said as far as we know there have not been any surveys using the rebar, so this allows us to correct the record before it gets used in surveys.

BeBl_A03. Sheppard said this was never set by the government, but we went ahead and established it. He said he went basically with a split. He said we did not set the center; it did not seem like it would help anybody. He said the deeds don't call for that half section line so I felt like it would be counterproductive and it's either in the river or right on the bank. Sheppard said he had reviewed some of the deeds and none of them called for the center. There was a discussion of setting center corners since they are not original government corners. Trohn said we can look at center corners on a case-by-case basis, depending on records and occupation.

Oser had comments about some of the crows' feet on the plat not pointing to the corners. Borgman had a question about state plane coordinates. Trohn said we are going to put them to the tenth and they are on the document because we have a PS conducting the work. He said anything else that was done, preservation wise, you can contact the office; we do have the

coordinates and we are comfortable with providing them to you, but we are not going to put them on the official record.

Oser said the survey looks good and is very clear; the information I want to see is there. There was a discussion of the intricacies of using Civil3D and compliments for Jason George on his work.

Motion by Deckard to approve TwpCor_XVIII*, BeBl_A03*, BeBl_A05, BeBl_C01*, BeBl_C05, BeBl_E01*, BeBl_E03* & BeBl_E05 with the addition of correcting the label on BeBl_C01 to read BeBl_C01 instead of Bean_C01. VOTE: AYE (unanimous). Motion carried.

- VI. Public Input: none**
- VII. Adoption of next meeting date: May 21, 2024.**
- VIII. Adjournment at approximately 4:48 PM**

Minutes approved _____

Secretary _____

NOTES:

- Field work was performed in Jan - Apr, 2024
- This document is not complete without the associated report of survey.
- Interior quarter-section corners, sixteenth-section corners and corners of minor subdivisions were not evaluated in any way unless shown hereon or specifically discussed in the report of survey. Bearing breaks may exist between section corners and quarter corners that are not shown. Bearings and distances are shown hereon to correlate corners and to assist in corner analysis.
- Basis of Bearings: Unless noted otherwise, the basis of bearings is Grid North NAD83(2011), Indiana West Zone, Epoch 2010.0000, Geoid Model G2012BU7, Datum NAD83_NO_TRANS, US Survey Feet, derived from GPS observations utilizing the Indiana Real-Time Network (INCORS). Coordinate data was collected with a Javad Triumph LS Network Rover and/or with a Sokkia Set 510 Total Station radially from points located with GPS. Distances obtained with GPS have not been adjusted to ground. To adjust grid distances to ground distances multiply them by a scale factor of 1) 1.000041208.

CERTIFICATION:

I hereby certify that this survey was performed either by me or under my direction. To the best of my knowledge and belief, this survey was executed according to survey requirements in Title 865, Rule 12 of the Indiana Administrative Code.

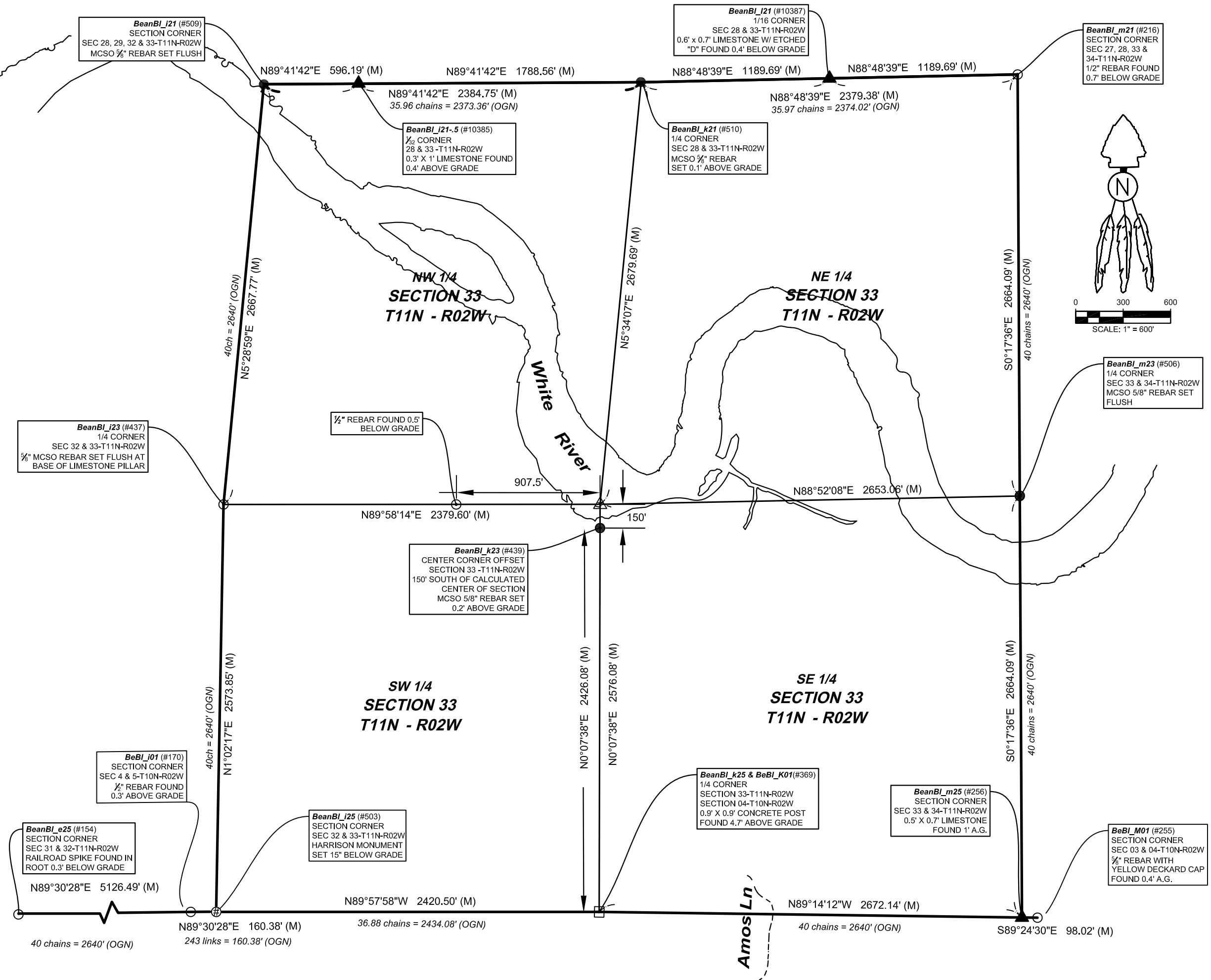
Certified This Date

Michael E. Sheppard
Professional Surveyor
No. 20100021
State of Indiana
msheppard@co.monroe.in.us



LEGEND:

- (M) Measured Distance
- (R-1884) Record Distance
- (OGN) Original Government Notes
- (C) Calculated Distance
- (CR) Calculated from Record
- RICH_U17** (#283) Corner Reference ID
- A.G. Above grade
- B.G. Below grade
- ⊕ Harrison Monument
- Iron Monument Found
- Iron Monument Set
- ⊙ Iron Pipe Found
- ⊗ Mag Nail / Mag Spike
- Post Found
- ▲ Stone Found
- △ Calculated Corner
- Line not to scale



REPORT OF SURVEY:

In accordance with Title 865, Article 1, Chapter 12 of the Indiana Administrative Code, the following observations and opinions are submitted regarding the various uncertainties in the locations of the corners established by this survey as a result of availability and condition of reference monuments, occupation or possession lines, and clarity or ambiguity of the record descriptions and plats. There may be unwritten rights associated with these uncertainties. Any uncertainty associated with the corners shown hereon is inherently passed to any parcel corner dependent on its position. The Relative Positional Accuracy in the location of points shown on this survey is within that allowable for a rural survey (0.26 feet + 200 ppm) as defined by Title 865, Rule 12 of the Indiana Administrative Code.

The purpose of this survey is to perpetuate the section/half section corners in Section 33-T11N-R02W, 2nd Principal Meridian, Wayne Township Owen County and Bean Blossom Township, Monroe County, Indiana. Interior quarter-section corners, sixteenth-section corners, and corners of minor subdivisions were not evaluated in any way unless specifically discussed herein. The relationship of the section/half section corners to the adjoining parcel boundary lines was not addressed. Occupation lines in the immediate vicinity of the monuments found or set are shown on the associated Monument Records on file in the Office of the Monroe County Surveyor.

Reference survey records were obtained from the Monroe County Surveyor, Monroe County Recorder, Monroe County Auditor, Monroe County Planning, Monroe County Highway Department, and the U.S. Army Corps of Engineers. Surveys consulted are included in the history section pertaining to each monument. Reference Survey ID numbers refer to the Monroe County Surveyor's Reference Survey Database and Instrument numbers refer to the Monroe County Recorder's Database, unless noted otherwise.


MONUMENTS FOUND OR SET:

Monuments and corners discovered, analyzed, evaluated and used in the process of this survey, the theory of location used to accept or establish these monuments and corners, and this surveyor's opinion of the uncertainties associated with these monuments and corners are discussed in the theory of location section of the following corner tie sheets and data about BeanBI_i21, BeanBI_i21.5 and a 1/2" rebar at point#10428, discussed as follows:

BeanBI_k21, point #10387 is a 0.6' north-south by 0.7' east-west limestone with the letter D on top, found 0.4' below ground, with a pipe type steel post against its West side. The pipe was loosely imbedded in the ground, so we drove it down deeper into the ground. We took references with a compass and cloth tape, consisting of a 30" dbh Burr Oak tree N90°W 11.7', a 12" dbh Hackberry tree N0°W 5.0' and a 12" dbh Hackberry tree S19°W 17.2'. This appears to be the stone documented as set in Owen County Survey Book 2, page 396, on October 1, 1903. Said survey noted as approved by Charles E Hartsock. Said Book 2, page 396 notes this stone was set midway between the Northeast corner of the Section and the 1/4 corner (apparently referring to the North quarter corner of the Section). No mention is made of a stone marked 1 noted as set at this corner purportedly by the same method in April 1874 by Owen County Surveyor James King via Owen County Survey book 2, Page 366.

BeanBI_i21.5, point #10385 is a 0.3' north-south by 1.0' east-west limestone found solidly imbedded in the ground, beside a steel fence post with white PVC pipe over it, at a east-west and north farm field division corner. I was not able to find records of this stone in Owen or Monroe County corner record books. Its location relative to the surrounding occupation lines makes it in my opinion the most reliable evidence of the originally established location of the Northeast corner of the west half of the Northwest quarter of the Northwest quarter of Section 33 Township 11 North Range 2 West with negligible uncertainty.

Point #10428 is the base of bent 1/2" diameter rebar found 0.5' below ground, in line with a westbound row of old hackberry trees and at a northbound crop field/edge of woods and weeds division line. The rebar that is noted in a survey by Edmund Farkus dated April 10, 1979 (RSID005432), as being on the east to west half Section line and 907.5' west of the center of Section.

SHEET 2 OF 34	CORNER PERPETUATION SURVEY SECTION 33 – T11N - R02W Wayne Township Owen County and Bean Blossom Township	Project: 2024-001 Section 33 Field work by: Michael E. Sheppard and Jason M. George Drawn by: JMG Reviewed by: MES, TER & SRB	 OFFICE OF THE MONROE COUNTY SURVEYOR Trohn Enright-Randolph <i>Monroe County Surveyor</i> Morton Street Ste 205, Bloomington, IN surveyoroffice@co.monroe.in.us
--------------------------------------	---	---	--

MONUMENT RECORD

Corner ID: **BeanBI_i21**

Section Corner

Sections 28, 29, 32 & 33- T10N-R02W, 2nd P.M.

This corner is in

Wayne Township Owen County Indiana

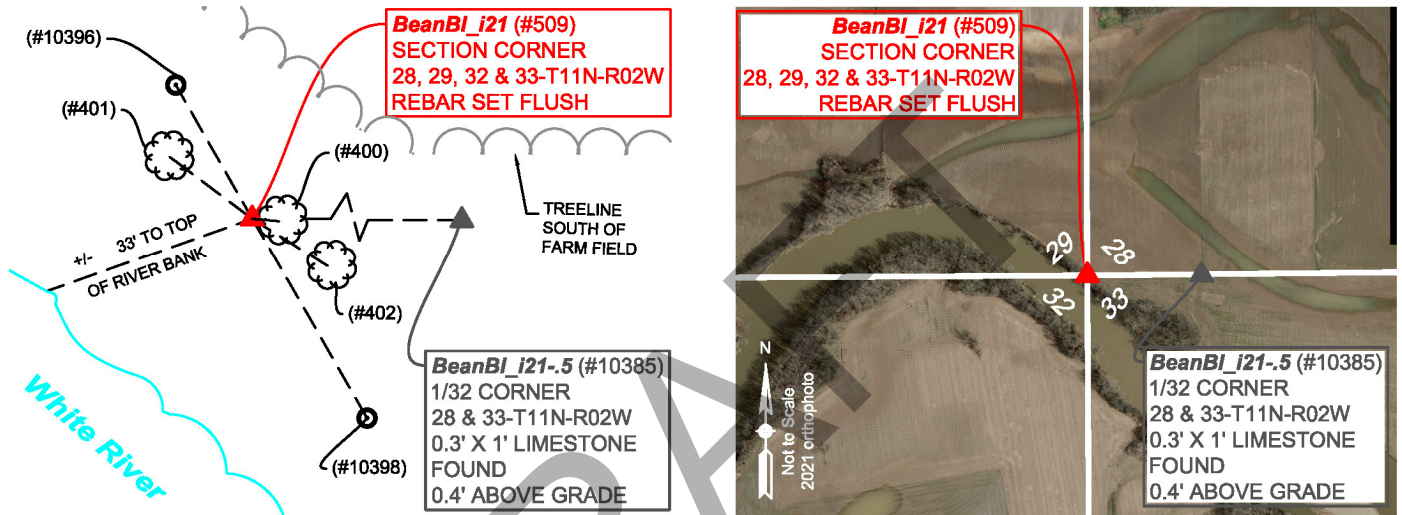
Though in places noted as being in

Bean Blossom Township, Monroe County, Indiana

Section 29 T11N-R02W	Section 28 T11N-R02W
Section 32 T11N-R02W	Section 33 T11N-R02W

MONUMENT: Describe monument set or found (Include material type, scribing, distance above/below grade, dimensions.)
 (#509) Set 5/8" diameter rebar (24" long), with 2" diameter aluminum cap inscribed MONROE COUNTY SURVEYORS OFFICE SHEPPARD PLS#20100021, flush with ground, in a wooded area between the North top of bank of white river and the South edge of a crop field.

MONUMENT LOCATION SKETCH:



WITNESS MONUMENT TIES: Describe at least three new BT's (Bearing Trees) and/or witness objects established or work done to preserve existing evidence. BT diameters are noted as dbh (diameter at breast height) and are measured approximately 4.5' above ground. Bearings and Distances are measured from the monument to the center of the BT. Bearings and Distances to witness ties were measured with a Sokkia Set 510 Total Station.

ID	Bearing	Distance	Description
(#400)	S84°43'E	4.2'	8" diameter elm tree
(#402)	S57° 38'E	14.0'	22' diameter soft maple tree with a boxelder tree growing against its South side.
(#401)	N53° 14'W	16.1'	40" diameter (at base) triple soft maple tree

MONUMENT ACCESSORIES

Other survey grade monuments that were located in the vicinity and their relation to the monument. Witnesses noted as a Rebar Lite are a 5/8" diameter by 16" polycarbonate rod with a 1-1/2" mag nail in top and yellow plastic cap stamped "MONROE COUNTY WITNESS POINT" set 0.1 foot below grade unless otherwise noted. Geodetic coordinates in this table are provided in the format Northing, Easting.

(#10396)	N29° 49' 36"W	24.06'	N:1496103.7517' E:3075909.3091' Rebar Lite
(#10398)	S29° 54' 35"E	36.05'	N:1496082.8787' E: 3075921.2760' Rebar Lite
(#10385)	N89° 41' 42"E	596.19'	N:1496086.0533' E:3076517.4576' 0.3' N-S X 1' E-W Limestone found 0.4' above ground by steel post



OFFICE OF THE MONROE COUNTY SURVEYOR • Trohn Enright-Randolph

501 N Morton Street Ste 205, Bloomington, IN 47404 • 812-349-2570 • surveyoroffice@co.monroe.in.us

MONUMENT RECORD

Corner ID: **BeanBI_i21**

Section Corner

Sections 28, 29, 32 & 33- T10N-R02W, 2nd P.M.

This corner is in

Wayne Township Owen County Indiana

Though in places noted as being in

Bean Blossom Township, Monroe County, Indiana

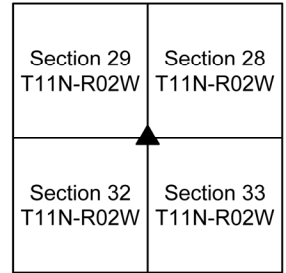


PHOTO IDENTIFIED: Photo Date: 03/28/2024



Photo Orientation & Description: From North looking South



Photo Orientation & Description: From West looking East

EXISTING SURVEY HISTORY Include as much detail and history of the corner as known at the time of perpetuation

ORIGINAL GOVERNMENT SURVEY:

Year Surveyed: 1819 By: Thos Brown Deputy Surveyor
Where filed or recorded: Owen County Original Notes Page 6.

Original monument: Post

Bearing Trees or Reference Monuments:

Species	Dia.	Bearing	Distance
W Thorn	6"	S33°E	14 Links
Hackberry	4"	N38°W	22 Links

Notes:

SUBSEQUENT CORNER RESTORATION:

None Found

OTHER SURVEY HISTORY: Include details such as surveyor name, date, recording info, monument description, etc.

None Found



OFFICE OF THE MONROE COUNTY SURVEYOR • Trohn Enright-Randolph

501 N Morton Street Ste 205, Bloomington, IN 47404 • 812-349-2570 • surveyorsoffice@co.monroe.in.us

Report Sheet # 4 of 34

MONUMENT RECORD

Corner ID: **BeanBI_i21**

Section Corner

Sections 28, 29, 32 & 33- T10N-R02W, 2nd P.M.

This corner is in

Wayne Township Owen County Indiana

Though in places noted as being in

Bean Blossom Township, Monroe County, Indiana

Section 29 T11N-R02W	Section 28 T11N-R02W
Section 32 T11N-R02W	Section 33 T11N-R02W

ORIGINAL OR SUBSEQUENT SURVEY EVIDENCE FOUND: *Include, search area or areas, search procedure, etc.*

Date of Field work/Search: 03/25&28 2024 *By:* MES/JMG *Monument Found:* Rebar set *BTs or Reference Objects Found:* Not found but references made. *Project #:* 24-001 *Field Book:* 56, pages 26&27.

OTHER EVIDENCE: *Describe corner location relative to nearby features and how to reach the corner location – note fences, roads, timber cutting lines, mow lines, clearings, plantings, streams, topo changes, etc.*

The set rebar is in a wooded area between the North top of bank of White River and the South edge of a crop field, approximately 1700' South of a house at 6588 Lingle Road, Gosport In, 596.19' West of a stone with a steel post inside a PVC pipe beside it, at a North, East and West farm field division corner.

MONUMENT PRESERVATION: *Describe work done to preserve existing monument.*

We set the rebar, located trees for a visual reference and set 2 rebar lites within sight of the rebar that could be used to reestablish its location should it become obliterated. A steel post with Monroe County Surveyors Office witness sign, facing North, was placed 0.4' South of the rebar, 3.7' above ground.

THEORY OF LOCATION: *Describe the theory of location for acceptance of this monument. Include monument origin and associated uncertainty.*

The rebar was set on the extension of a line from a rebar set at the North Quarter corner of S33-11N-2W through a stone found at the (apparent) historically used and accepted location of the Southeast corner of the West Half of the West Half of the Southwest Quarter of the Southwest Quarter of Section 28-11N-2W, also known as the Northeast corner of the West Half of the Northwest Quarter of the Northwest Quarter of Section 33-11N-2W, and at a distance dividing said Quarter Quarter Sections into equal parts.

GEODETIC COORDINATES: *Northing:* 1496082.9, *Easting:* 3075921.3

BASIS OF GEODETIC COORDINATES:

The basis of bearings is Grid North NAD83(2011), Indiana West Zone, Epoch 2010.0000, Geoid Model G2012BU7, Datum NAD83_NO_TRANS, US Survey Feet, derived from GPS observations utilizing the Indiana Real-Time Network (INCORS). Coordinate data was collected with a Javad Triumph LS Network Rover and/or with a Sokkia Set 510 Total Station radially from points located with GPS. Distances obtained with GPS have not been adjusted to ground. To adjust grid distances to ground distances multiply them by a scale factor of 1.000041208.

This document is not complete without the associated Corner Perpetuation plat and report of survey for Section 32 or Section 33, Township 11 North Range 2 West by Michael E. Sheppard of the Monroe County Surveyor's Office dated April 18, 2024.

CERTIFICATIONS:



OFFICE OF THE MONROE COUNTY SURVEYOR • Trohn Enright-Randolph

501 N Morton Street Ste 205, Bloomington, IN 47404 • 812-349-2570 • surveyorsoffice@co.monroe.in.us

MONUMENT RECORD

Corner ID: **BeanBI_i21**

Section Corner

Sections 28, 29, 32 & 33- T10N-R02W, 2nd P.M.

This corner is in

Wayne Township Owen County Indiana

Though in places noted as being in

Bean Blossom Township, Monroe County, Indiana

Section 29 T11N-R02W	Section 28 T11N-R02W
Section 32 T11N-R02W	Section 33 T11N-R02W

PENDING



Michael E. Sheppard

Date:
 Michael E. Sheppard
 State of Indiana
 Professional Surveyor
 No. 20100021

Date:
 Trohn Enright-Randolph
 Monroe County Surveyor

Accepted by the Monroe
 County Surveyor Review
 Board on **date**

DRAFT



OFFICE OF THE MONROE COUNTY SURVEYOR • Trohn Enright-Randolph

501 N Morton Street Ste 205, Bloomington, IN 47404 • 812-349-2570 • surveyoroffice@co.monroe.in.us

Report Sheet # 6 of 34

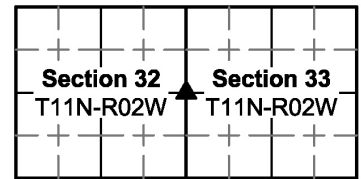
Page 4 of 4

MONUMENT RECORD

Corner ID: **BeanI23**

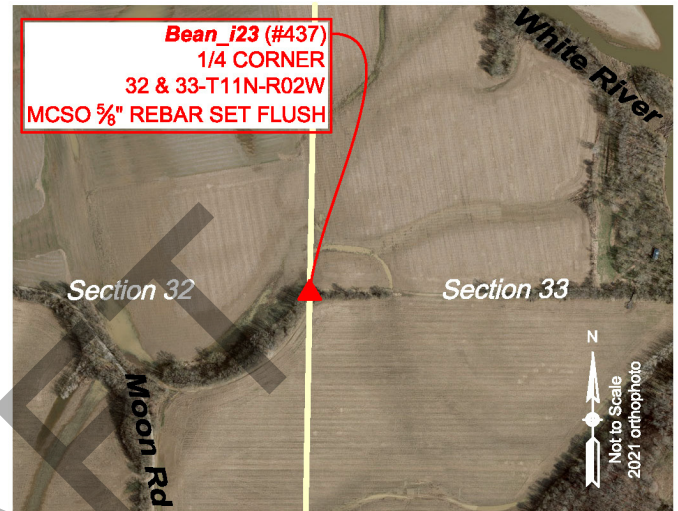
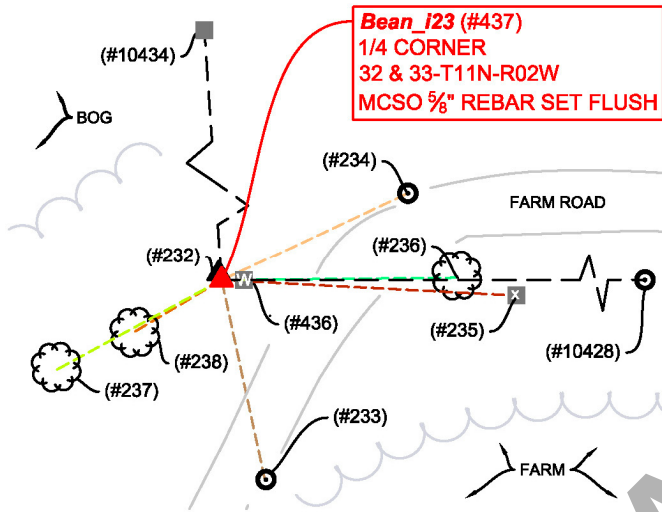
Quarter Corner

Sections 32 & 33- T11N-R02W, 2nd P.M.
Bean Blossom Township, Monroe County, Indiana



MONUMENT: Describe monument set or found (Include material type, scribing, distance above/below grade, dimensions.)
 (#437) Set 5/8" diameter rebar with (24" long), with 2" diameter aluminum cap inscribed MONROE COUNTY SURVEYORS OFFICE SHEPPARD PLS#2010021, set flush with ground, at the Southeast base of a severely leaning engraved stone pillar. Rebar was set at the location of the stone pillar prior to being leaned over, based on the location of a found reference stone.

MONUMENT LOCATION SKETCH:



WITNESS MONUMENT TIES: Describe at least three new BT's (Bearing Trees) and/or witness objects established or work done to preserve existing evidence. BT diameters are noted as dbh (diameter at breast height) and are measured approximately 4.5' above ground. Bearings and Distances are measured from the monument to the center of the BT. Bearings and Distances to witness ties were measured with a Sokkia Set 510 Total Station.

ID	Bearing	Distance	Description
(#238)	S59° 15' W	26.3'	17" diameter boxelder
(#237)	S61° 28' W	48.9'	32" diameter silver maple
(#236)	N89° 26' E	61.6'	Center of triple fork 4' diameter (at base) mulberry tree

MONUMENT ACCESSORIES

Other survey grade monuments that were located in the vicinity and their relation to the monument. Witnesses noted as a Rebar Lite are a 5/8" diameter by 16" polycarbonate rod with a 1-1/2" mag nail in top and yellow plastic cap stamped "MONROE COUNTY WITNESS POINT" set 0.1 foot below grade unless otherwise noted.

Geodetic coordinates in this table are provided in the format Northing, Easting.

(#436)	N89° 58' 14" E	5.94'	N:1493427.3221' E:3075672.3046' 6" by 6" square limestone with the letter W engraved on top found 15" below ground
(#234)	N64° 50' 17" E	53.71'	N: 1493450.1554' E: 3075714.9780' 5/8" rebar with Monroe County Witness Point cap set 0.1' below ground
(#233)	S12° 13' 38" E	53.63'	N:1493374.9089' E: 3075677.7221' 5/8" rebar with Monroe County Witness Point cap set 0.1' below ground
(#10434)	N03° 50' 14" W	729.64'	N:1494155.3242' E:3075617.5344' Cross ground on top of 0.7' north-south by 0.6' east-west limestone found flush with ground at the West base of a 3' diameter concrete pillar found 4' above ground
(#235)	S86° 57' 53" E	77.03'	N:1493423.2404' E:3075743.2826'



OFFICE OF THE MONROE COUNTY SURVEYOR • Trohn Enright-Randolph

501 N Morton Street Ste 205, Bloomington, IN 47404 • 812-349-2570 • surveyorsoffice@co.monroe.in.us

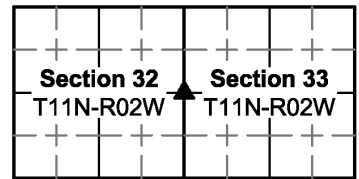
Page 1 of 4

MONUMENT RECORD

Corner ID: **BeanBI_i23**

Quarter Corner

Sections 32 & 33- T11N-R02W, 2nd P.M.
 Bean Blossom Township, Monroe County, Indiana



			Cross ground on top and near Southwest corner of 1' X 3' limestone pillar found lying on ground. The Gray Corner.
(#232)	N23° 41' 22"W	1.85'	N:1493429.0145' E:3075665.6207' Center of Cross on top of leaning Limestone Pillar
(#10428)	N89° 58' 14"E	1472.10'	N:1493428.0732' E:3077138.4605' Base of bent ½" diameter rebar found 0.5' below ground believed to have been set in a survey in RSID005432

PHOTO IDENTIFIED: Photo Date: 04/23/2024



Photo Orientation & Description: From above



Photo Orientation & Description: From South looking North

EXISTING SURVEY HISTORY Include as much detail and history of the corner as known at the time of perpetuation

ORIGINAL GOVERNMENT SURVEY:

Year Surveyed: 1819 By: Thos Brown Deputy Surveyor
 Where filed or recorded: Owen County Original Notes, page 6.
 Original monument: Post
 Bearing Trees or Reference Monuments:

Species	Dia.	Bearing	Distance
Hackberry	16"	S66°E	22 Links
Hackberry	20"	N66°W	58 Links

Notes:

SUBSEQUENT CORNER RESTORATION:

Date Surveyed: 05/22/1907 By: CM Bowers Monroe County Surveyor
 Where filed or recorded: Legal Survey Book 3, page 27.
 Original monument: Stone
 Bearing Trees or Reference Monuments:

Species	Dia.	Bearing	Distance
Sugar Maple	30"	N27 1/2°W	10 ½ Links
Stone	N/A	90°E	9 Links

Notes: We found the witness stone



OFFICE OF THE MONROE COUNTY SURVEYOR • Trohn Enright-Randolph

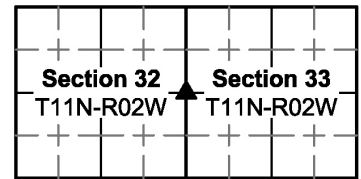
501 N Morton Street Ste 205, Bloomington, IN 47404 • 812-349-2570 • surveyorsoffice@co.monroe.in.us

MONUMENT RECORD

Corner ID: **BeanBI_i23**

Quarter Corner

Sections 32 & 33- T11N-R02W, 2nd P.M.
Bean Blossom Township, Monroe County, Indiana



OTHER SURVEY HISTORY: *Include details such as surveyor name, date, recording info, monument description, etc.*

DocumentDate	SurveyID	Surveyor	Description	InstrumentNo
6/27/1971	RSID005431	Dorman, Henry J.	15.7 acre Survey	
4/10/1979	RSID005432	Farkas, Edmund O.	72.37 ac Boundary Survey	

ORIGINAL OR SUBSEQUENT SURVEY EVIDENCE FOUND BY THE MONROE COUNTY SURVEYORS OFFICE: *Include, search area or areas, search procedure, etc.*

Date of Field work/Search: 05/16/1997 *By:* Kevin Enright, Alan McClain *Monument Found:* Stone *BTs or Reference Objects Found:* Yes *Project #:* 97-02 *Field Book:* 97-02 (27) *Notes:*

ORIGINAL OR SUBSEQUENT SURVEY EVIDENCE FOUND BY THE MONROE COUNTY SURVEYORS OFFICE: *Include, search area or areas, search procedure, etc.*

Date of Field work/Search: 1/26/2024, 04/23/2024, 04/25/2024 *By:* MES/JMG *Monument Found:* set rebar beside disturbed stone based on the calculated location of the stone being disturbed, from a found original (undisturbed) witness stone. *BTs or Reference Objects Found:* Yes *Project #:* 24-001 *Field Book:* 55, page 68 *Field Book:* 56 pages, 30&31 *Notes:*

OTHER EVIDENCE: *Describe corner location relative to nearby features and how to reach the corner location – note fences, roads, timber cutting lines, mow lines, clearings, plantings, streams, topo changes, etc.*

Stone is on an earthen levee just off a curve in an east-west farm lane that intersects Moon Road.

MONUMENT PRESERVATION: *Describe work done to preserve existing monument.*

Rebar was set at base of leaning stone where stones top had been (based on a found reference stone) prior to being leaned over. A steel post with Monroe County witness sign facing South, was set 3.4' above ground, on the North side of the stone. 2 rebars were set within sight of the corner that can be used to reestablish it should it ever be obliterated. Crosses were ground on 2 nearby found stones. Trees were also located as a visual aid in finding the rebar. GPS coordinates were also established.

THEORY OF LOCATION: *Describe the theory of location for acceptance of this monument. Include monument origin and associated uncertainty.*

The rebar was set at the Southeast base of a leaning 9" north-south by 8" east-west limestone pillar found with a cross on top of it, 0.5' above ground, at the calculated location of where the top of the stone had been before being leaned over, based on the record dimension from a found reference stone. In looking at the stone pillar, it is evident that it would occupy this location if it were standing vertical in the ground. We dug down around the pillar over 3' and never found its bottom and determined, due to its size and weight we were not going to be able to straighten it up. The found stone appears to either be the stone or at the location of the stone set by C M Bowers, Monroe County Surveyor on 05/22/1907, via legal survey book 3, page 27. Being that the stone is over 100' West of a straight line between the Southeast and Northeast corners of Section 32/Southwest and Northwest corners of Section 33, I have serious reservations that this stone is where the original post was set in 1819 to mark this corner, however upon finding the witness stone, I believe there is negligible uncertainty that the rebar set this survey is where said Monroe County Surveyor C M Bowers established the corner in 1907. I hypothesis that Mr. Bower did not know the location of the Section corner to the North when he established this corner. In said legal survey book 3, page 27, Mr. Bowers notes establishing the center of Section from the South 1/2 mile corner 156 rods and 18 links "N", then establishing this corner 144 rods and 7 links "W" of said center of Section. Although this wouldn't be the correct procedure set forth by the Bureau of Land Management to reestablish this corner, that is how he did it in 1907 and this is the location that has been historically used and accepted since that time.



OFFICE OF THE MONROE COUNTY SURVEYOR • Trohn Enright-Randolph

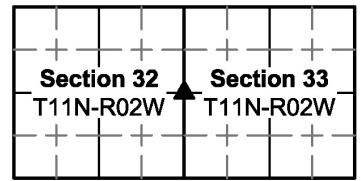
501 N Morton Street Ste 205, Bloomington, IN 47404 • 812-349-2570 • surveyorsoffice@co.monroe.in.us

MONUMENT RECORD

Corner ID: **BeanBI_i23**

Quarter Corner

Sections 32 & 33- T11N-R02W, 2nd P.M.
Bean Blossom Township, Monroe County, Indiana



Section 32
T11N-R02W

Section 33
T11N-R02W

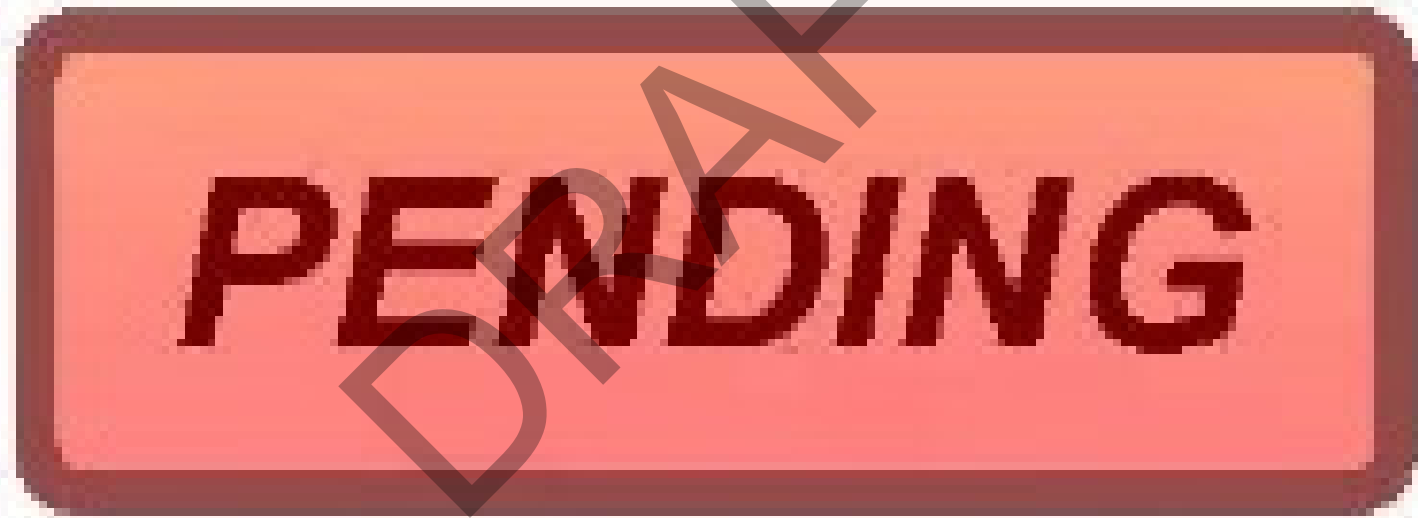
GEODETIC COORDINATES: *Northing: 1493427.3', Easting: 3075666.4'*

BASIS OF GEODETIC COORDINATES:

The basis of bearings is Grid North NAD83(2011), Indiana West Zone, Epoch 2010.0000, Geoid Model G2012BU7, Datum NAD83_NO_TRANS, US Survey Feet, derived from GPS observations utilizing the Indiana Real-Time Network (INCORS). Coordinate data was collected with a Javad Triumph LS Network Rover and/or with a Sokkia Set 510 Total Station radially from points located with GPS. Distances obtained with GPS have not been adjusted to ground. To adjust grid distances to ground distances multiply them by a scale factor of 1.0041208.

This document is not complete without the associated Corner Perpetuation plat and report of survey for Section 32 or 33, Township 11 North Range 2 West by Michael E. Sheppard of the Monroe County Surveyor's Office dated June 18, 2024.

CERTIFICATIONS:



OFFICE OF THE MONROE COUNTY SURVEYOR • Trohn Enright-Randolph

501 N Morton Street Ste 205, Bloomington, IN 47404 • 812-349-2570 • surveyoroffice@co.monroe.in.us

Report Sheet # 10 of 34

Page 4 of 4

MONUMENT RECORD

Corner ID: **BeanBI_i25**

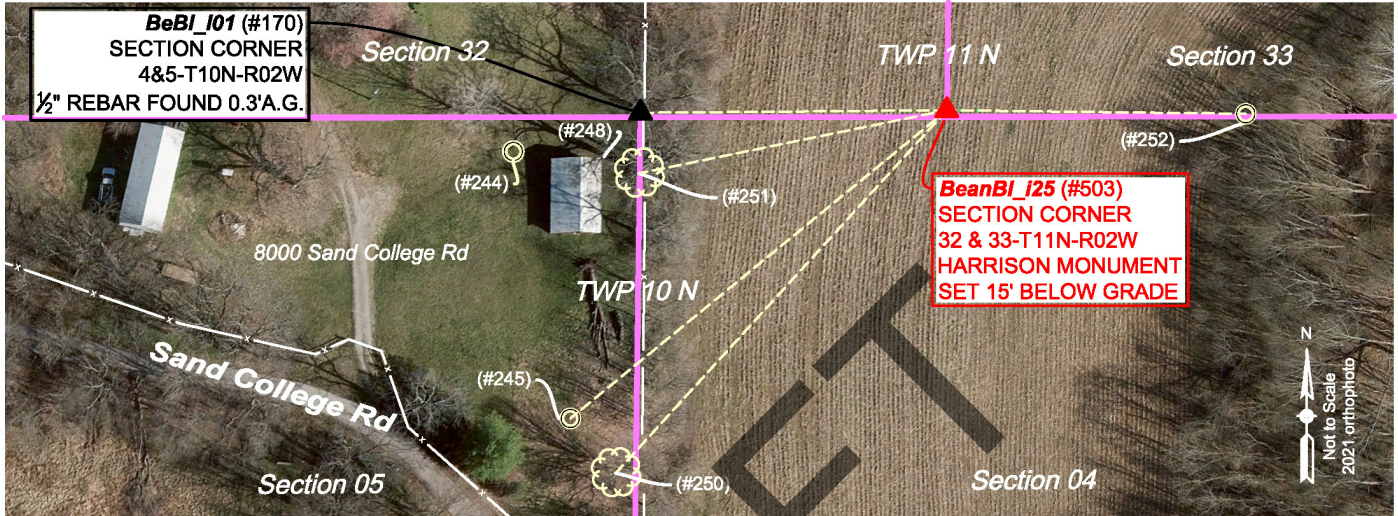
Section Corner

Sections 32 & 33- T11N-R02W, 2nd P.M.
Bean Blossom Township, Monroe County, Indiana

Section 32 T11N-R02W	Section 33 T11N-R02W
Section 05 T10N-R02W	Section 04 T10N-R02W

MONUMENT: Describe monument set or found (Include material type, scribing, distance above/below grade, dimensions.)
Harrison monument (#503) inscribed Section Corner, set 15" below ground, in a crop field.

MONUMENT LOCATION SKETCH:



WITNESS MONUMENT TIES: Describe at least three new BT's (Bearing Trees) and/or witness objects established or work done to preserve existing evidence. BT diameters are noted as dbh (diameter at breast height) and are measured approximately 4.5' above ground. Bearings and Distances are measured from the monument to the center of the BT. Bearings and Distances to witness ties were measured with a Sokkia Set 510 Total Station.

ID	Bearing	Distance	Description
(#251)	S78° 24'W	164.5'	30" diameter Walnut tree
(#250)	S42° 22'W	257.3'	24" Sugar Maple tree
(#248)	S81° 10'W	187.0'	Northeast corner wooden barn

MONUMENT ACCESSORIES

Other survey grade monuments that were located in the vicinity and their relation to the monument. Witnesses noted as a Rebar Lite are a 5/8" diameter by 16" polycarbonate rod with a 1-1/2" mag nail in top and yellow plastic cap stamped "MONROE COUNTY WITNESS POINT" set 0.1 foot below grade unless otherwise noted.

Geodetic coordinates in this table are provided in the format Northing, Easting

(#170)	S89° 30' 28"W	160.38'	N: 1490852.5150' E: 3075459.3622' 1/2" rebar found 0.3' above ground (BeBI_i01)
(#252)	S89° 19' 33"E	156.54'	N:1490852.0512' E: 3075776.2622' BRG PLS capped rebar found 0.2' below ground by steel post with PVC pipe over it.
(#245)	S50° 41' 02"W	254.77'	N:1490692.4725' E:3075422.6319' Rebar lite
(#244)	S84° 34' 39"W	228.03'	N:1490852.5150' E:3075459.3622' Rebar lite



OFFICE OF THE MONROE COUNTY SURVEYOR • Trohn Enright-Randolph

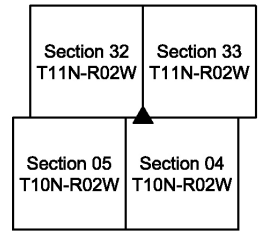
501 N Morton Street Ste 205, Bloomington, IN 47404 • 812-349-2570 • surveyorsoffice@co.monroe.in.us

MONUMENT RECORD

Corner ID: **BeanBI_i25**

Section Corner

Sections 32 & 33- T11N-R02W, 2nd P.M.
 Bean Blossom Township, Monroe County, Indiana



05/09/2024

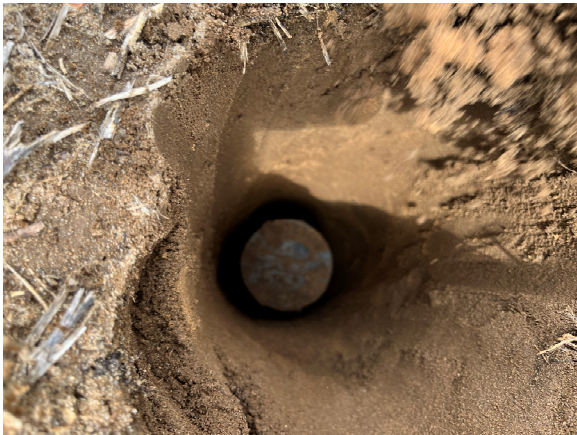


Photo Orientation & Description: From above



Photo Orientation & Description: From South looking North

EXISTING SURVEY HISTORY *Include as much detail and history of the corner as known at the time of perpetuation*

ORIGINAL GOVERNMENT SURVEY:

Year Surveyed: 1819 By: William Harris, Deputy Surveyor
 Where filed or recorded: Monroe County Original Notes Page 237

Original monument: Post

Bearing Trees or Reference Monuments:

Species	Dia.	Bearing	Distance
None given		°	
		°	

Notes:

OTHER SURVEY HISTORY: *Include details such as surveyor name, date, recording info, monument description, etc.*

DocumentDate	SurveyID	Surveyor	Description	InstrumentNo
6/12/2004	RSID002183	Sheppard, Michael E.	Plat of Section Corner Re-Establishment Survey. Owen/Monroe Line.	

SUBSEQUENT CORNER RESTORATION:

None Found

ORIGINAL OR SUBSEQUENT SURVEY EVIDENCE FOUND BY THE MONROE COUNTY SURVEYORS OFFICE: *Include, search area or areas, search procedure, etc.*

Date of Field work/Search: 01/30/2024, 03/11/2024 & 05/09/2024 By: MES/JMG Monument Found: Harrison monument set BTs or Reference Objects Found: No, but references were established. Project #: 24-001 Field Book: 55, page 69 & 70, also field book 56, page 19 Notes: I set the Harrison incorrectly on 03/11/2024, then dug it out and moved it to correct location on 05/09/2024.

OTHER EVIDENCE: *Describe corner location relative to nearby features and how to reach the corner location – note fences, roads, timber cutting lines, mow lines, clearings, plantings, streams, topo changes, etc.*

The corner is in a crop field with no visible occupation in the immediate vicinity. We reached the corner by parking at a locked gate off of West Sand College Road, directly South of the corner and just East of the property around a house at 8000 West Sand College Road and walking North to the corner.

MONUMENT PRESERVATION: *Describe work done to preserve existing monument.*

Monument was buried in a crop field; at a depth I think farm equipment will not reach. GPS coordinates were established on its location and references were made.

THEORY OF LOCATION: *Describe the theory of location for acceptance of this monument. Include monument origin and associated uncertainty.*

The Harrison monument (#503) was set at the extension of a line beginning at a railroad spike in a tree root at the Southwest corner of Section 32, Township 11 North Range 2 West (BeanBI_e25), through a 1/2" diameter rebar found at the Northeast corner of Section 5/Northwest corner of Section 4, Township 10 North Range 2 West (BeBI_I01) and at record distance of 243 Links (±160.38') from the rebar at BeBI_I01. Uncertainties associated with this corner would be relative to the rebar found at said BeBI_I01. The theory of location discussion relative to the 1/2" rebar at BeBI_I01, on it's reference tie sheet is herein reprinted as follows: The first survey of modern origin, I uncovered that showed a rebar (or any monument for that matter after the original wood post), is a



OFFICE OF THE MONROE COUNTY SURVEYOR • Trohn Enright-Randolph

501 N Morton Street Ste 205, Bloomington, IN 47404 • 812-349-2570 • surveyorsoffice@co.monroe.in.us

MONUMENT RECORD

Corner ID: **BeanBI_i25**

Section Corner

Sections 32 & 33- T11N-R02W, 2nd P.M.
Bean Blossom Township, Monroe County, Indiana

Section 32 T11N-R02W	Section 33 T11N-R02W
Section 05 T10N-R02W	Section 04 T10N-R02W

survey by Edmund O. Farkas dated November 21, 1979, found in the Monroe County Surveyors Office data base as RSID004160. It is not clear from a review of said survey if he set or found the rebar in 1979. I personally visited the site and found the 1/2" diameter rebar on 5-24-2004, while doing a Section corner reestablishment survey for the Owen County surveyors office. At that time, I noted the rebar to be at the North edge of the evident cut of an old, abandoned, east-west road bed (not as visible today as 20 years ago). On my 2004 visit to the site, I noted that the adjoining landowner, appx. 65-year-old Patricia Powell walked us to an area she said her father had always told her the Sections cornered, which was approximately 20.5' South of the rebar. The vicinity she showed us was in the approximate South edge of the apparent cut of the old, abandoned roadway and I observed a 1.1' by 1.3' by 0.3' thick stone lying flat, 0.3' below ground, in a north-south fence line. It appears this is the stone cited in a survey by Jess A Gwinn PLS as found disturbed and reset. The stone was then referenced by Kevin P. Enright, Monroe County Surveyor, on March 14, 2006 and entered into Monroe County Surveyors Office corner records. I revisited the sight in 2006, while doing a survey dated June 7, 2006, recorded in instrument #2006013767. My helper at the time, (Carl Wigal) who had extensive background in building houses, said it looked like a "foundation stone" to him. I observed grooves on the stone supporting his idea that it had at 1 time possibly had steel in and or against it and questioned its validity as a 1800's survey corner stone. In 2014, a survey was conducted by BRG surveying, under the direction of Rachel Oser PLS and in said survey, dated August 8, 2014, and recorded in instrument #2016011069, Mrs. Oser noted that the rebar matched deeds and occupation lines in the area, and accepted the rebar over the stone.

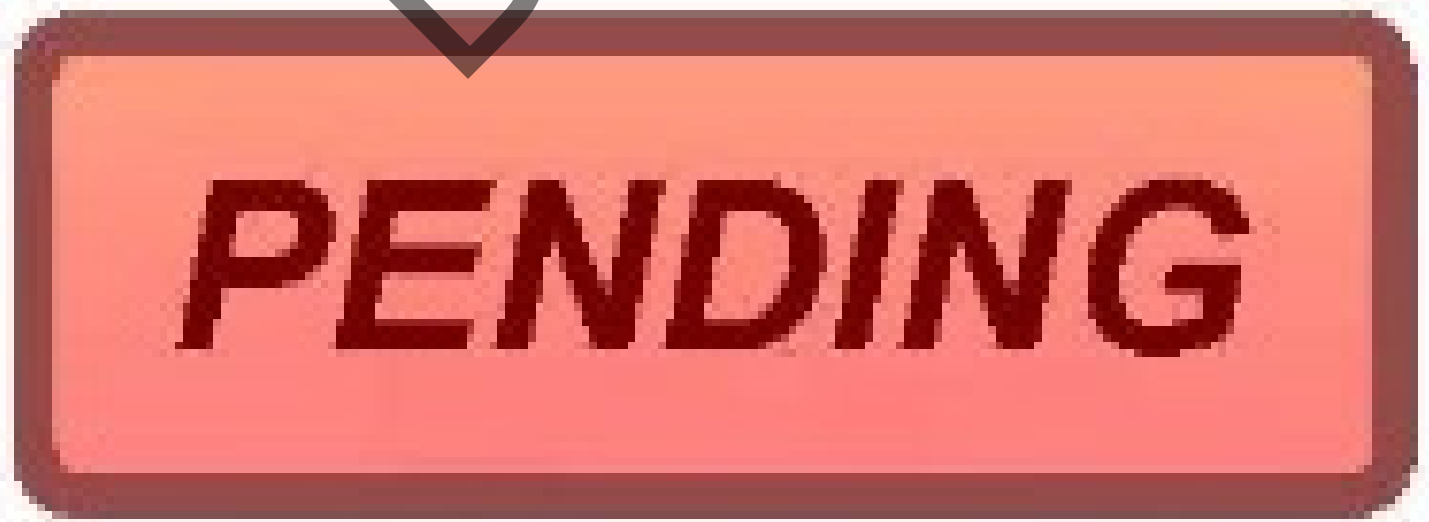
GEODETIC COORDINATES: *Northing:1490853.9' Easting: 3075619.7'*

BASIS OF GEODETIC COORDINATES:

The basis of bearings is Grid North NAD83(2011), Indiana West Zone, Epoch 2010.0000, Geoid Model G2012BU7, Datum NAD83_NO_TRANS, US Survey Feet, derived from GPS observations utilizing the Indiana Real-Time Network (INCORS). Coordinate data was collected with a Javad Triumph LS Network Rover and/or with a Sokkia Set 510 Total Station radially from points located with GPS. Distances obtained with GPS have not been adjusted to ground. To adjust grid distances to ground distances multiply them by a scale factor of 1.000041208.

This document is not complete without the associated Corner Perpetuation plat and report of survey for Section 32 or 33 Township 11 North Range 2 West, by Michael E. Sheppard of the Monroe County Surveyor's Office dated June 18, 2024.

CERTIFICATIONS:



MONUMENT RECORD

Corner ID: **BeanBI_k21**

Quarter Corner

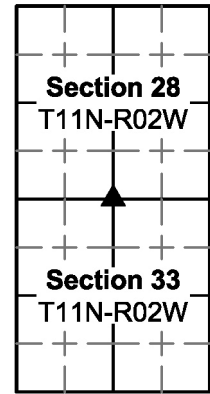
Sections 28 & 33- T10N-R02W, 2nd P.M.

This corner is in

Wayne Township Owen County Indiana

Though in places noted as being in

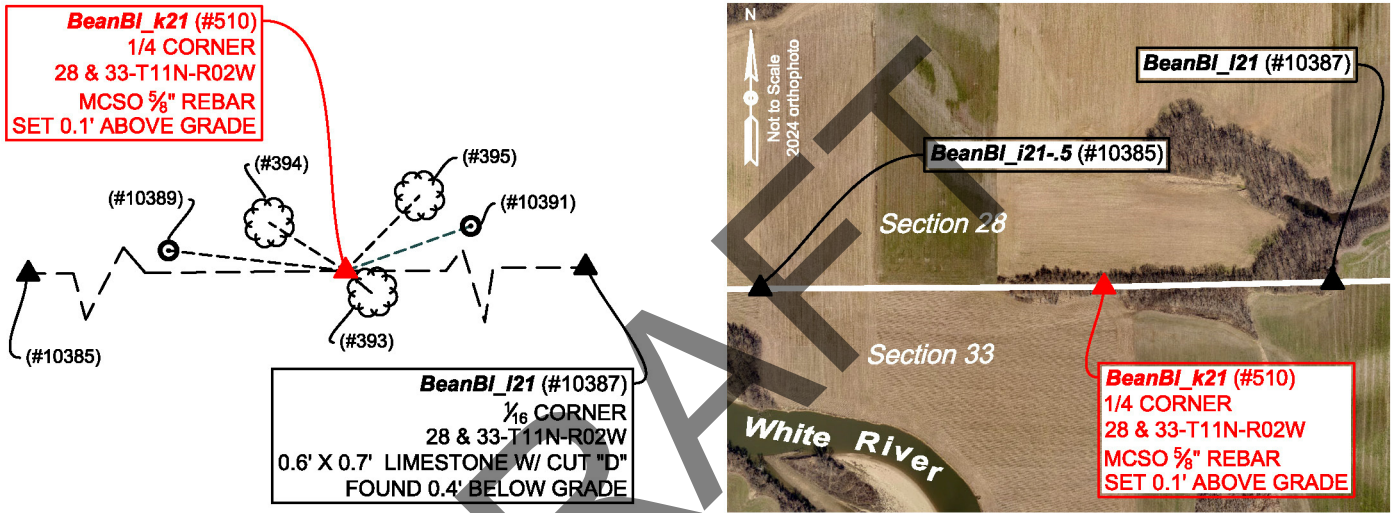
Bean Blossom Township, Monroe County, Indiana



MONUMENT: Describe monument set or found (Include material type, scribing, distance above/below grade, dimensions.)

(#510) Set 5/8" diameter rebar (24" long), with 2" diameter aluminum cap inscribed MONROE COUNTY SURVEYORS OFFICE SHEPPARD PLS#20100021, with top left 0.1' above ground, at the South crest of the top of bank of an earthen Levee, that runs east and west, approximately 20' South of the center of said levee.

MONUMENT LOCATION SKETCH:



WITNESS MONUMENT TIES: Describe at least three new BT's (Bearing Trees) and/or witness objects established or work done to preserve existing evidence. BT diameters are noted as dbh (diameter at breast height) and are measured approximately 4.5' above ground. Bearings and Distances are measured from the monument to the center of the BT. Bearings and Distances to witness ties were measured with a Sokkia Set 510 Total Station.

ID	Bearing	Distance	Description
(#393)	S46° 27"E	2.2'	6" diameter twin Mulberry tree
(#394)	N57° 52' W	37.6'	3" diameter Burr Oak
(#395)	N44° 36'E	43.8'	4" diameter Burr Oak

MONUMENT ACCESSORIES

Other survey grade monuments that were located in the vicinity and their relation to the monument. Witnesses noted as a Rebar Lite are a 5/8" diameter by 16" polycarbonate rod with a 1-1/2" mag nail in top and yellow plastic cap stamped "MONROE COUNTY WITNESS POINT" set 0.1 foot below grade unless otherwise noted.

Geodetic coordinates in this table are provided in the format Northing, Easting.

(#10391)	N70° 18' 49"E	55.32'	N:1496114.2120' E:3078358.0806' Rebar Lite on top of levee
(#10389)	N83° 29' 01"W	74.18'	N:1496103.9958' E:3078232.2947' Rebar Lite on top of levee
(#10385)	S89° 41' 42"W	1788.56'	N:1496086.0533 E:3076517.4576 Limestone found (BeanBI_i21-.5) 0.4' above ground by steel post



OFFICE OF THE MONROE COUNTY SURVEYOR • Trohn Enright-Randolph

501 N Morton Street Ste 205, Bloomington, IN 47404 • 812-349-2570 • surveyorsoffice@co.monroe.in.us

Report Sheet # 14 of 34

Page 1 of 4

MONUMENT RECORD

Corner ID: **BeanBI_k21**

Quarter Corner

Sections 28 & 33- T10N-R02W, 2nd P.M.

This corner is in

Wayne Township Owen County Indiana

Though in places noted as being in

Bean Blossom Township, Monroe County, Indiana

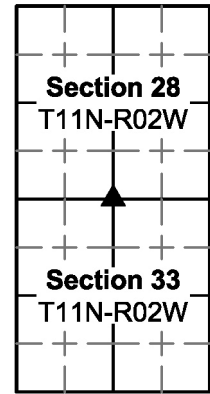


PHOTO IDENTIFIED: Photo Date: 03/25/2024



Photo Orientation & Description: From North looking South



Photo Orientation & Description: From West looking East

EXISTING SURVEY HISTORY *Include as much detail and history of the corner as known at the time of perpetuation*

ORIGINAL GOVERNMENT SURVEY:

Year Surveyed: 1819 By: Thos Brown Deputy Surveyor

Where filed or recorded: Owen County Original Notes, page 6

Original monument: Post

Bearing Trees or Reference Monuments:

Species	Dia.	Bearing	Distance
Horn Beam	6"	S42°E	10 Links
Hickory	15"	N62°E	12 Links

SUBSEQUENT CORNER RESTORATION:

Though I found no corner restoration or references after the 1819 survey, I did find, in Owen County Survey Book 2, Page 396, that in April 1874, Owen County Surveyor James King notes setting a stone marked 1, midway from Ne corner of Section and ¼ Section corner but makes no mention of monumentation at the Section or ¼ Section corners. Then on April 15, 1878, Owen County Surveyor Geo D Phillips notes setting a stone marked A, 8 ½ rods East of the Quarter Section corner via Owen County Survey book 2, page 371. Then on October 1, 1903, Owen County Surveyor Charles E Hartsock notes finding the stone marked A and setting a stone marked D (found this survey) on the Section line midway between the North Quarter corner and Northeast corner of the Section, via Owen County Survey Book 2, page 396, but no mention of monument type or references is given to said North Quarter corner or Northeast Corner.



OFFICE OF THE MONROE COUNTY SURVEYOR • Trohn Enright-Randolph

501 N Morton Street Ste 205, Bloomington, IN 47404 • 812-349-2570 • surveyorsoffice@co.monroe.in.us

Page 2 of 4

MONUMENT RECORD

Corner ID: **BeanBI_k21**

Quarter Corner

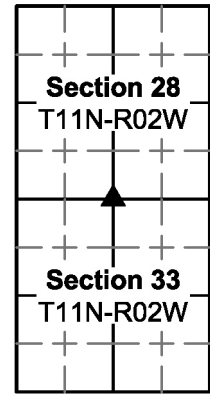
Sections 28 & 33- T10N-R02W, 2nd P.M.

This corner is in

Wayne Township Owen County Indiana

Though in places noted as being in

Bean Blossom Township, Monroe County, Indiana



OTHER SURVEY HISTORY: *Include details such as surveyor name, date, recording info, monument description, etc.*
See Above

ORIGINAL OR SUBSEQUENT SURVEY EVIDENCE FOUND BY THE MONROE COUNTY SURVEYORS OFFICE: *Include, search area or areas, search procedure, etc.*
Date of Field work/Search: 03/25/2024 By: MES/JMG Monument Found: None found, Rebar Set. BTs or Reference Objects Found: No, but new references were made. Project #: 24-001 Field Book: 56, pages 24&25. Notes:

OTHER EVIDENCE: *Describe corner location relative to nearby features and how to reach the corner location – note fences, roads, timber cutting lines, mow lines, clearings, plantings, streams, topo changes, etc.*
Set rebar is at the South crest of hill of an approximate 40' wide (on top) earthen levee that runs east to west. The location is approximately 2200' South of a house at 7067 Lingle Road, Gosport Indiana. In crop out, dry, conditions it is possible to drive across crop fields to reach it.

MONUMENT PRESERVATION: *Describe work done to preserve existing monument.*
Rebar was set. Trees were located as a visual reference in finding it. A steel post with Monroe County Survey marker sign facing South, was set 4' above ground, 1' North of the rebar. 2 Rebar Lites were set within sight of the rebar that could be used to reestablish its location should it become obliterated.

THEORY OF LOCATION: *Describe the theory of location for acceptance of this monument. Include monument origin and associated uncertainty.*
The rebar was set at the extension of and double the distance between a rebar at the Northeast corner of the Section and an engraved stone halfway between it and said rebar at the Northeast corner of the Section. Based on the assumption that the rebar at the Northeast corner of the Section is where the original Section corner was and that the stone between it and the rebar set was set halfway between the corners as was documented by the Owen County Surveyor in 1903.

GEODETIC COORDINATES: *Northing: 1496095.6, Easting: 3078306.0*

BASIS OF GEODETIC COORDINATES:

The basis of bearings is Grid North NAD83(2011), Indiana West Zone, Epoch 2010.0000, Geoid Model G2012BU7, Datum NAD83_NO_TRANS, US Survey Feet, derived from GPS observations utilizing the Indiana Real-Time Network (INCORS). Coordinate data was collected with a Javad Triumph LS Network Rover and/or with a Sokkia Set 510 Total Station radially from points located with GPS. Distances obtained with GPS have not been adjusted to ground. To adjust grid distances to ground distances multiply them by a scale factor of 1.000041208.

This document is not complete without the associated Corner Perpetuation plat and report of survey for Section 33 Township 11 North Range 2 West, by Michael E. Sheppard of the Monroe County Surveyor's Office dated June 18, 2024.



OFFICE OF THE MONROE COUNTY SURVEYOR • Trohn Enright-Randolph

501 N Morton Street Ste 205, Bloomington, IN 47404 • 812-349-2570 • surveyorsoffice@co.monroe.in.us

Page 3 of 4

MONUMENT RECORD

Corner ID: **BeanBI_k21**

Quarter Corner

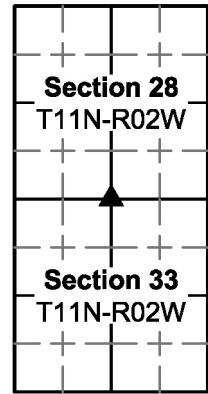
Sections 28 & 33- T10N-R02W, 2nd P.M.

This corner is in

Wayne Township Owen County Indiana

Though in places noted as being in

Bean Blossom Township, Monroe County, Indiana



CERTIFICATIONS:



DRAFTING



OFFICE OF THE MONROE COUNTY SURVEYOR • Trohn Enright-Randolph

501 N Morton Street Ste 205, Bloomington, IN 47404 • 812-349-2570 • surveyoroffice@co.monroe.in.us

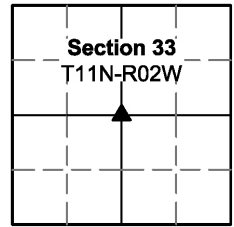
Page 4 of 4

Report Sheet # 17 of 34

MONUMENT RECORD

Corner ID: **BeanBI_k23**
Quarter Corner

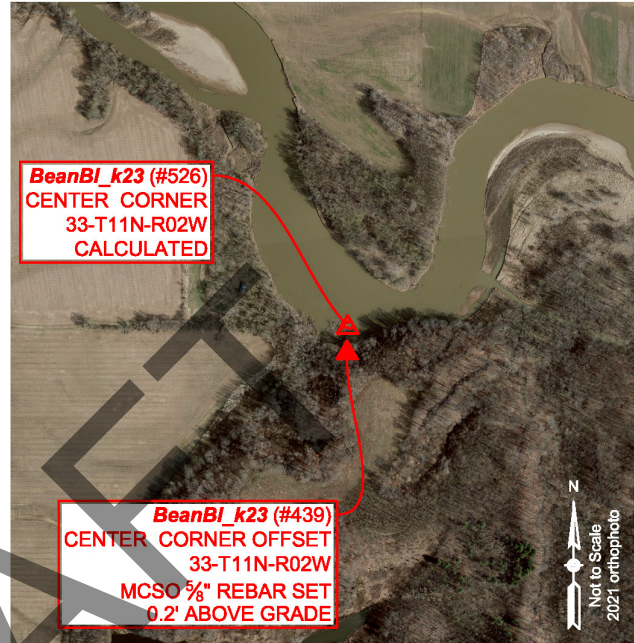
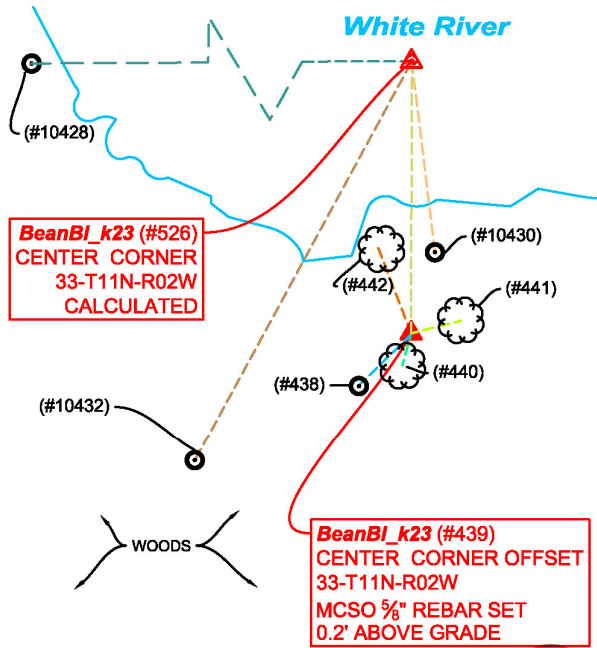
Section 33-T10N-R02W, 2nd P.M.
Bean Blossom Township, Monroe County, Indiana



MONUMENT: Describe monument set or found (Include material type, scribing, distance above/below grade, dimensions.)

The calculated center of Section 33 T10N R2W (point #526) fell in white river. A 5/8" diameter rebar (24" long), with 2" diameter aluminum cap inscribed MONROE COUNTY SURVEYORS OFFICE SHEPPARD PLS#20100021 (#439), was set with top left 0.2' above ground, at the tow of slope of a steep, wooded, North facing hill, in an old east-west fence line, on line between the calculated center of Section and the concrete post at the South quarter corner of the Section and 150.00' from said calculated center.

MONUMENT LOCATION SKETCH:



WITNESS MONUMENT TIES: Describe at least three new BT's (Bearing Trees) and/or witness objects established or work done to preserve existing evidence. BT diameters are noted as dbh (diameter at breast height) and are measured approximately 4.5' above ground. Bearings and Distances are measured from the monument to the center of the BT. Bearings and Distances to witness ties were measured with a Sokkia Set 510 Total Station. Note Ties shown hereon are to the witness rebar, 150.00' North of the calculated corner in the river.

ID	Bearing	Distance	Description
(#442)	N21° 10'W	50.6'	26" diameter soft Maple tree
(#441)	N75° 44'E	28.5'	41" diameter Beech tree
(#440)	S12° 21'W	5.9'	5" diameter east fork of twin buckeye tree
(#438)	S49° 25'W	11.4'	5/8" diameter rebar found lying flat, 8" below ground believed to have been set in RSDD005433

MONUMENT ACCESSORIES

Other survey grade monuments that were located in the vicinity and their relation to the monument. Witnesses noted as a Rebar Lite are a 5/8" diameter by 16" polycarbonate rod with a 1-1/2" mag nail in top and yellow plastic cap stamped "MONROE COUNTY WITNESS POINT" set 0.1 foot below grade unless otherwise noted.

Geodetic coordinates in this table are provided in the format Northing, Easting. Note: These accessories are from the calculated corner in the river.

(#439)	S00° 07' 38"W	150.00'	N: 1493278.5384' E: 3078045.6273' Aluminum capped rebar set 0.2' above ground at North toe of slope of steep hill
(#10430)	S06° 58' 13"E	106.06'	N: 1493323.2611' E: 3078058.8311' Rebar Lite
(#10432)	S28° 33' 17"W	250.96'	N: 1493208.1022' E: 3077926.0007' Rebar Lite
(#10428)	S89° 58' 15"W	907.50'	N:1493428.0732' E:3077138.4605' Base of bent 1/2" diameter rebar found 0.5' below ground believed to have been set in a survey in RSID005432



OFFICE OF THE MONROE COUNTY SURVEYOR • Trohn Enright-Randolph

501 N Morton Street Ste 205, Bloomington, IN 47404 • 812-349-2570 • surveyorsoffice@co.monroe.in.us

MONUMENT RECORD

Corner ID: **BeanBI_k23**
Quarter Corner

Section 33-T10N-R02W, 2nd P.M.
 Bean Blossom Township, Monroe County, Indiana

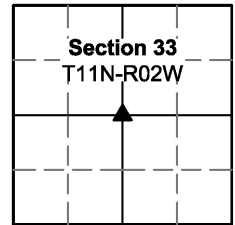


PHOTO IDENTIFIED: *Photo Date: 4/25/2024*



Photo Orientation & Description: From West Looking East (to witness rebar)



Photo Orientation & Description: From North looking South (to witness rebar)

EXISTING SURVEY HISTORY *Include as much detail and history of the corner as known at the time of perpetuation*

The center of the Section was not set in the original Government survey of the Section.

ORIGINAL CORNER ESTABLISHMENT:

Date Surveyed: May 22, 1907 By: C.M. Bowers
Where filed or recorded: Legal Survey Book 3, Page 27
Original monument: Not noted
Bearing Trees or Reference Monuments:

Species	Dia.	Bearing	Distance
Stone		N54 1/2°W	16 Links
Stone		S13°W	16 Links

Notes: Mr. Bowers noted Beginning at the S 1/2 mile corner of the Section and measuring North 156 rods to establish this corner.

OTHER SURVEY HISTORY: *Include details such as surveyor name, date, recording info, monument description, etc.*

Date	RSID	Surveyor	Description
6/27/1971	RSID005431	Dorman, Henry J.	15.7 acre Survey
4/10/1979	RSID005432	Farkas, Edmund O.	72.37 ac Boundary Survey
8/08/2014	RSID005433	Rachel Oser	Survey of Martin Family Property

ORIGINAL OR SUBSEQUENT SURVEY EVIDENCE FOUND: *Include, search area or areas, search procedure, etc.*

Date of Field work/Search: 4/23/2024 & 4/25/2024 By: MES/JMG Monument Found: none BTs or Reference Objects Found: No, but references were established. Project #: 24-001 Field Book: 56, pages 30 & 33 Notes: Actual corner is in White River

OTHER EVIDENCE: *Describe corner location relative to nearby features and how to reach the corner location – note fences, roads, timber cutting lines, mow lines, clearings, plantings, streams, topo changes, etc.*

We reached the location by parking at a cable at the end of a farm lane that intersects Moon Road and walking 907.5' East, along the river to the location. Corner is in the river. A fence runs generally east and west and generally along the toe of a steep hill, that begins ±150' South of the corner.

MONUMENT PRESERVATION: *Describe work done to preserve existing monument.*

We set a witness corner to the calculated corner in the river and 2 Rebar Lites, as well as located trees to reference the witness corner.



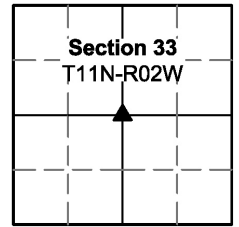
OFFICE OF THE MONROE COUNTY SURVEYOR • Trohn Enright-Randolph

501 N Morton Street Ste 205, Bloomington, IN 47404 • 812-349-2570 • surveyorsoffice@co.monroe.in.us

MONUMENT RECORD

Corner ID: **BeanBI_k23**
Quarter Corner

Section 33-T10N-R02W, 2nd P.M.
Bean Blossom Township, Monroe County, Indiana



THEORY OF LOCATION: *Describe the theory of location for acceptance of this monument. Include monument origin and associated uncertainty.*
 The corner was established at the extension of the rebar set at the base of a disturbed stone, through a rebar that is noted in a survey by Edmund Farkus dated April 10, 1979 (RSID005432) and at record distance, per said survey of 907.5' from said rebar. Said rebar is at an old occupation corner, consisting of an old east-west tree line and North bound edge of a crop field/overgrown field with trees. A survey by Henry J. Dorman dated June 27, 1971 (RSID005431) also notes this dimension of 907 1/2' (55 rods) from said Center of Section corner, though he does not show a monument at said corner, or the Center of Section. The procedures set forth by the Bureau of Land Management for establishment of the Center of a Section of land is to establish it at the intersection of the lines joining opposite quarter corners of the Section. The corner as calculated this survey is 124.7' West of a straight line between the rebar set at the North quarter corner of the Section and the concrete post at the South quarter corner of the Section, and 24.1' South of a straight line between the rebar set at the East quarter of the Section and the stone at the West quarter corner of the Section and may technically bear an uncertainty of that magnitude, however it is obvious that it was not originally established in the manner it was supposed to have been established. It appears that it was originally established from a bearing of North from the South quarter corner. It is noteworthy that in its original establishment it was noted as being 156 rods and 18 links (2585.88') North of the South quarter corner vs the 2576.09' measured this survey and 144 rods and 7 links (2380.62') East of the West quarter corner of the Section vs the 2379.60' measured this survey.

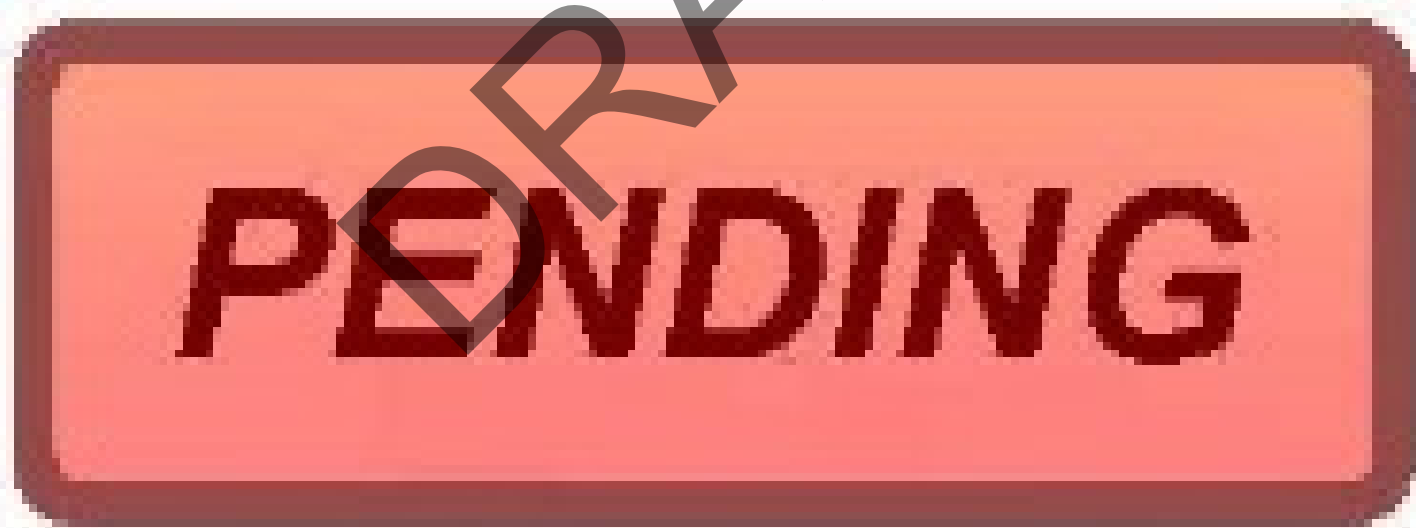
GEODETIC COORDINATES: *Northing:* 1493428.5', *Easting:* 3078046.0'

BASIS OF GEODETIC COORDINATES:

The basis of bearings is Grid North NAD83(2011), Indiana West Zone, Epoch 2010.0000, Geoid Model G2012BU7, Datum NAD83_NO_TRANS, US Survey Feet, derived from GPS observations utilizing the Indiana Real-Time Network (INCORS). Coordinate data was collected with a Javad Triumph LS Network Rover and/or with a Sokkia Set 510 Total Station radially from points located with GPS. Distances obtained with GPS have not been adjusted to ground. To adjust grid distances to ground distances multiply them by a scale factor of 1.000041208.

This document is not complete without the associated Corner Perpetuation plat and report of survey for Section 33, Township 11 North Range 2 West by Michael E. Sheppard of the Monroe County Surveyor's Office dated June 18, 2024.

CERTIFICATIONS:



OFFICE OF THE MONROE COUNTY SURVEYOR • Trohn Enright-Randolph

501 N Morton Street Ste 205, Bloomington, IN 47404 • 812-349-2570 • surveyoroffice@co.monroe.in.us

Report Sheet # 20 of 34

Page 3 of 3

MONUMENT RECORD

Corner ID: **BeBI_K01 &**

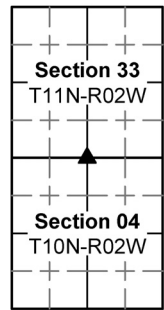
BeanBI_k25

Quarter Corner

Section 04- T10N-R02W, 2nd P.M.

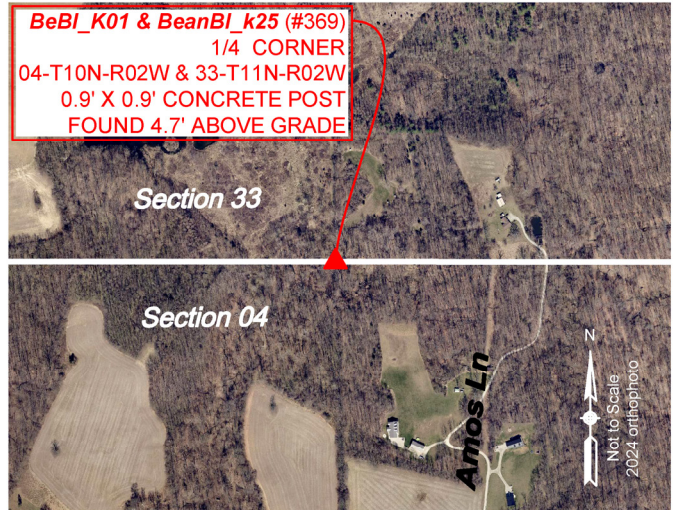
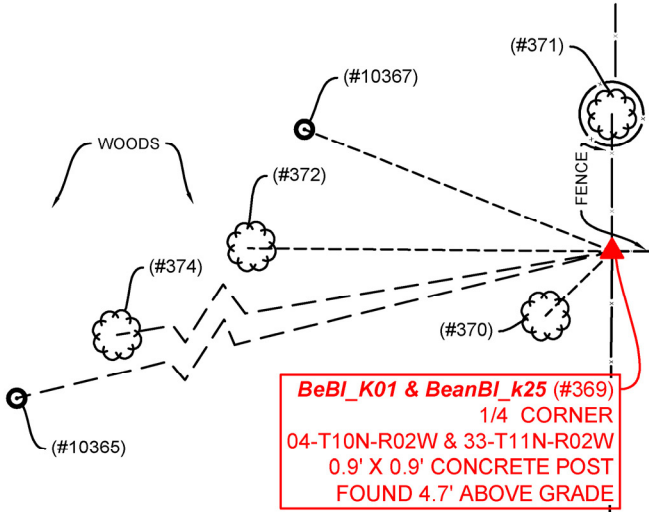
Section 33- T11N-R02W, 2nd P.M.

Bean Blossom Township, Monroe County, Indiana



MONUMENT: Describe monument set or found (Include material type, scribing, distance above/below grade, dimensions.)
 (#369) 0.9' X 0.9' Concrete Post, standing 4.7' above ground, at ancient north-south and east fence corner.

MONUMENT LOCATION SKETCH:



WITNESS MONUMENT TIES: Describe at least three new BT's (Bearing Trees) and/or witness objects established or work done to preserve existing evidence. BT diameters are noted as dbh (diameter at breast height) and are measured approximately 4.5' above ground. Bearings and Distances are measured from the monument to the center of the BT. Bearings and Distances to witness ties were measured with a Sokkia Set 510 Total Station.

ID	Bearing	Distance	Description
371	N00°01'W	28.7'	16" diameter Hackberry
370	S45°57'W	19.2'	13" diameter Sugar Maple
372	N89°30'W	75.7'	14" diameter Sycamore (leaning North)
374	S80°26'W	173.6'	10" diameter White Walnut

MONUMENT ACCESSORIES

Other survey grade monuments that were located in the vicinity and their relation to the monument. Witnesses noted as a Rebar Lite are a 5/8" diameter by 16" polycarbonate rod with a 1-1/2" mag nail in top and yellow plastic cap stamped "MONROE COUNTY WITNESS POINT" set 0.1 foot below grade unless otherwise noted.

Geodetic coordinates in this table are provided in the format Northing, Easting.

(#10365)	S 76d07'38" W	189.00'	N:1490807.1437' E:3077856.7535' Rebar lite set 0.1' below ground on ridge top
(#10367)	N 68d12'55" W	68.95'	N:1490878.0469' E:3077976.2183' Rebar lite set 0.1' below ground



OFFICE OF THE MONROE COUNTY SURVEYOR • Trohn Enright-Randolph

501 N Morton Street Ste 205, Bloomington, IN 47404 • 812-349-2570 • surveyoroffice@co.monroe.in.us

Report Sheet # 21 of 34

Page 1 of 4

MONUMENT RECORD

Corner ID: **BeBI_K01 &**

BeanBI_k25

Quarter Corner

Section 04- T10N-R02W, 2nd P.M.

Section 33- T11N-R02W, 2nd P.M.

Bean Blossom Township, Monroe County, Indiana

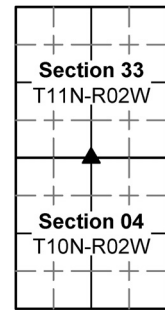


PHOTO IDENTIFIED: Photo Date: 03/11/2024



Photo Orientation & Description: From Southwest looking Northeast



Photo Orientation & Description: From Southwest looking Northeast

EXISTING SURVEY HISTORY *Include as much detail and history of the corner as known at the time of perpetuation*

ORIGINAL GOVERNMENT SURVEY:

Year Surveyed: 1819 By: William Harris Deputy Surveyor

Where filed or recorded: Original notes page 235

Original monument: Post

Bearing Trees or Reference Monuments:

Species	Dia.	Bearing	Distance
Beech	18"	N8°W	38 1/2 links
Beech	18"	S24°W	26 links

Notes: This is for the South half mile corner of Section 33, Township 11 North Range 2 West. The North half mile corner of Section 4, Township 10 North Range 2 West was not set in the original Government survey.

SUBSEQUENT CORNER RESTORATION:

Notes: Though I never found subsequent restoration records for the South half mile corner of said Section 33 or original establishment of the North half mile corner said Section 4, in legal survey book 3, page 27, C M Bowers, Monroe County Surveyor makes mention of holding something, just not what, at the South half mile corner of said Section 33.



OFFICE OF THE MONROE COUNTY SURVEYOR • Trohn Enright-Randolph

501 N Morton Street Ste 205, Bloomington, IN 47404 • 812-349-2570 • surveyorsoffice@co.monroe.in.us

Report Sheet # 22 of 34

Page 2 of 4

MONUMENT RECORD

Corner ID: **BeBI_K01 &**

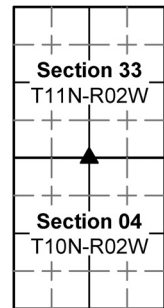
BeanBI_k25

Quarter Corner

Section 04- T10N-R02W, 2nd P.M.

Section 33- T11N-R02W, 2nd P.M.

Bean Blossom Township, Monroe County, Indiana



OTHER SURVEY HISTORY: *Include details such as surveyor name, date, recording info, monument description, etc.*

Document Date	Survey ID	Surveyor	Description
6/12/2004	RSID002183	Sheppard, Michael E.	Plat of Section Corner Re-Establishment Survey. Owen/Monroe Line.
11/30/2005	RSID004147	Curry, Douglas R.	Thomas & Betty Chambers, 11.75 acres & 5.00 acres
6/7/2006	RSID005434	Sheppard, Michael E.	Eden Retracement and division Survey
8/8/2014	RSID005433	Oser, Rachel	Martin Family Retracement Survey
10/29/2021	RSID004655	Deckard, Eric Lee	Merriman Sliding Scale Subdivision Final Plat
1/30/2023	RSID005085	Deckard, Eric Lee	Betty Chambers Sliding Scale Subdivision - Final Plat

ORIGINAL OR SUBSEQUENT SURVEY EVIDENCE FOUND: *Include, search area or areas, search procedure, etc.*

Date of Field work/Search: 3/11/2024 By: MES/JMG Monument Found: Concrete post BTs or Reference Objects Found: Yes Project #24-001 Field Book: 56, page 17&18 Notes:

OTHER EVIDENCE: *Describe corner location relative to nearby features and how to reach the corner location – note fences, roads, timber cutting lines, mow lines, clearings, plantings, streams, topo changes, etc.*

The post is at the corner of old north-south and east fences in an area of treetops that have been blown over by an apparent tornado. We reached the location by parking at a house at 9225 North Amos Lane Gosport In, walking to the Northwest corner of their yard, then walking west through some woods to a north-south fence line, then following said fence north to the post.

MONUMENT PRESERVATION: *Describe work done to preserve existing monument.*

The post is very stable. We took tree references for visual reference and set 2 rebar lites within sight of the post that could be used to reestablish its location should it become obliterated.

THEORY OF LOCATION: *Describe the theory of location for acceptance of this monument. Include monument origin and associated uncertainty.*

Post was found at long standing historically accepted occupation corner. Though there should have been offset corners in this vicinity, in my 2006 survey for Eden (RSID005434) I determined fencing going South from this post was in general alignment with it all the way to the Center of Section 4, thus making the post not only the most reliable evidence of the original location of the South ¼ corner of Section 33, Township 11 North Range 2 West with in my opinion negligible uncertainty, but also the historically used and accepted location and originally established location (not established in the original survey) of the North ¼ corner of Section 4, Township 10 North Range 2 West. This was also discussed in the Survey by Rachel Oser in RSID005433.

GEODETIC COORDINATES: *Northing:1490852.5' Easting: 3078040.2'*

BASIS OF GEODETIC COORDINATES:

The basis of bearings is Grid North NAD83(2011), Indiana West Zone, Epoch 2010.0000, Geoid Model G2012BU7, Datum NAD83_NO_TRANS, US Survey Feet, derived from GPS observations utilizing the Indiana Real-Time Network (INCORS). Coordinate data was collected with a Javad Triumph LS Network Rover and/or with a Sokkia Set 510 Total Station radially from points located with GPS. Distances obtained with GPS have not been adjusted to ground. To adjust grid distances to ground distances multiply them by a scale factor of 1.000041208.

This document is not complete without the associated Corner Perpetuation plat and report of survey for Section 33 Township 11 North Range 2 West or Section 4 Township 10 North Range 2 West, by Michael E. Sheppard of the Monroe County Surveyor's Office dated June 18, 2024.



OFFICE OF THE MONROE COUNTY SURVEYOR • Trohn Enright-Randolph

501 N Morton Street Ste 205, Bloomington, IN 47404 • 812-349-2570 • surveyoroffice@co.monroe.in.us

Page 3 of 4

MONUMENT RECORD

Corner ID: **BeBI_K01 &**

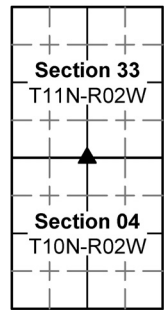
BeanBI_k25

Quarter Corner

Section 04- T10N-R02W, 2nd P.M.

Section 33- T11N-R02W, 2nd P.M.

Bean Blossom Township, Monroe County, Indiana



CERTIFICATIONS:

PENDING



OFFICE OF THE MONROE COUNTY SURVEYOR • Trohn Enright-Randolph

501 N Morton Street Ste 205, Bloomington, IN 47404 • 812-349-2570 • surveyorsoffice@co.monroe.in.us

Report Sheet # 24 of 34

Page 4 of 4

MONUMENT RECORD
State of Indiana - County of Monroe

Section: 33

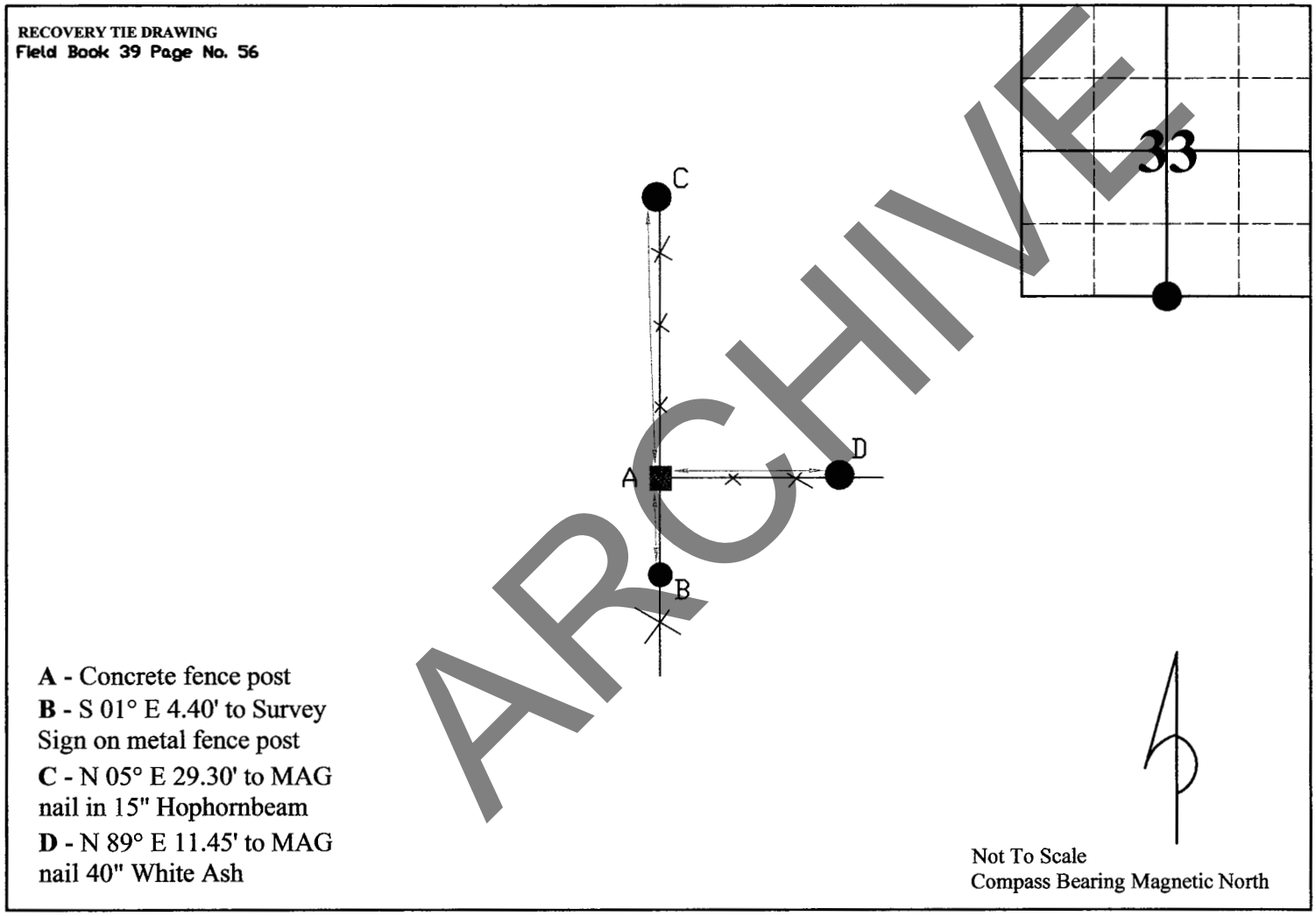
Township: 11 North

Range: 2 West

Corner ID: BeBl k-25

Monument Description & Remarks: Concrete fence post, length 0.90ft, width 0.90ft, height 4.90ft. Survey Sign 5ft above ground at pt. B

References On File: Edmund O. Farkas survey, John Martin (1979), on file in Surveyor Office



I, Kevin P. Enright, Monroe County Surveyor, hereby certify that this document was prepared under my direction in accordance with the provisions of section 36-2-12-11 of the Indiana Code; and the above data is given under my hand and seal this 11th day of July, 2007.

Kevin P. Enright



Administered by the Monroe County Surveyor Review Board

Date: 6-9-2010

MONUMENT RECORD

Corner ID: **BeanBI_m21**

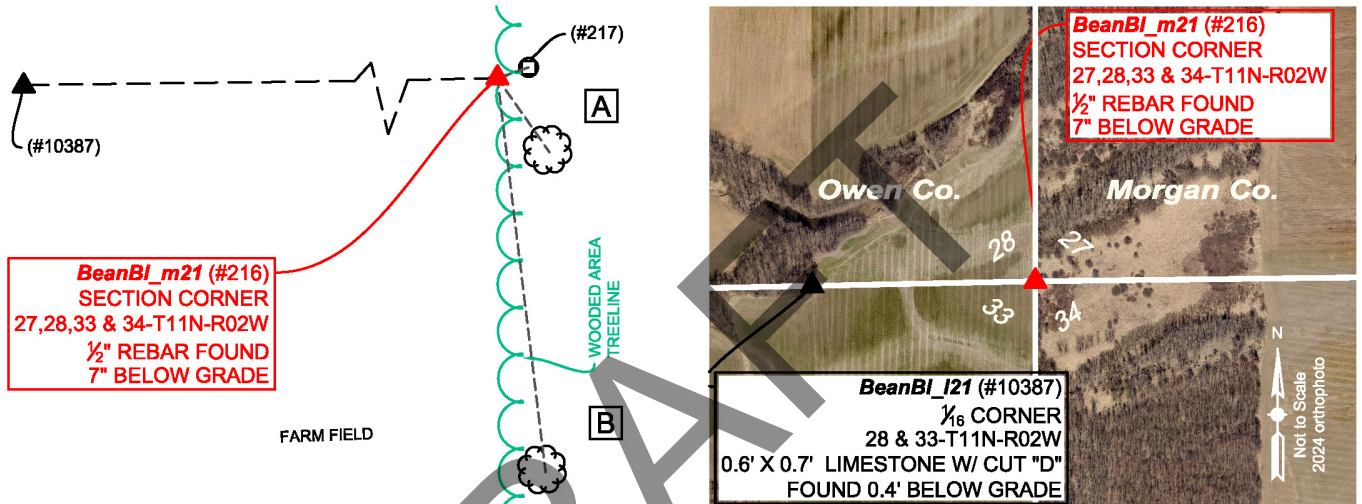
Section Corner Sections 27, 28, 33 & 34- T11N-R02W, 2nd P.M.

This monument is on the County Line between
Ray Township, Morgan County, Indiana
And Wayne Township, Owen County, Indiana
Though not in Monroe County, this corner is also, in places, referred to as
Bean Blossom Township, Monroe County, Indiana

Section 28 T11N-R02W	Section 27 T11N-R02W
Section 33 T11N-R02W	Section 34 T11N-R02W

MONUMENT: Describe monument set or found (Include material type, scribing, distance above/below grade, dimensions.)
(#216) 1/2" diameter rebar found 0.7' below ground at the east edge of a farm field.

MONUMENT LOCATION SKETCH:



WITNESS MONUMENT TIES			
<i>All ties to new Bearing Trees (BTs) are measured from the monument to the center of the tree. BT diameters are noted as dbh and are measured approximately 4.5' above ground.</i>			
ID	BEARING	DISTANCE	DESCRIPTION
Witness A	S 35d E	19.3'	8" Ash Tree
Witness B	S 7d E	84.3'	1' Ash Tree
MONUMENT ACCESSORIES			
<i>Other survey grade monuments that were located in the vicinity and their relation to the monument. Witnesses noted as a rebarlite are a 5/8" diameter by 16" polycarbonate rod with a 1-1/2" magnail and yellow plastic cap stamped "MONROE COUNTY WITNESS POINT" set 0.1 foot below grade unless otherwise noted.</i>			
<i>Geodetic coordinates in this table are provided in the format Northing, Easting.</i>			
(#217)	N 71d14'50" E	7.02'	Top Center of Broken T Post found 0.2' below grade. N:1496147.22' E:3080691.51'
(#10387)	S 88d48'39" W	1189.69'	0.6' X 0.7' Limestone etched with Letter "D" found 0.4 below grade. BeanBI_I21 N:1496120.27' E:3079495.43'



OFFICE OF THE MONROE COUNTY SURVEYOR • Trohn Enright-Randolph

501 N Morton Street Ste 205, Bloomington, IN 47404 • 812-349-2570 • surveyoroffice@co.monroe.in.us

Report Sheet # 25 of 34

Page 1 of 4

MONUMENT RECORD

Corner ID: **BeanBI_m21**

Section Corner Sections 27, 28, 33 & 34- T11N-R02W, 2nd P.M.

This monument is on the County Line between
 Ray Township, Morgan County, Indiana
 And Wayne Township, Owen County, Indiana
 Though not in Monroe County, this corner is also, in places, referred to as
 Bean Blossom Township, Monroe County, Indiana

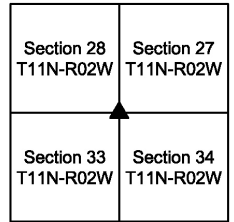


PHOTO IDENTIFIED: Photo Date: 1/22/2024



Photo Orientation & Description: From above



Photo Orientation & Description: From West looking East

SUBSEQUENT CORNER RESTORATION:

Date Surveyed: March 26, 1851 **By:** Wm McCormick Owen
County Surveyor.

Where filed or recorded:

Owen County Survey Book 1, page 43

Original monument: Stone Marked S27,28,33,34.

Bearing Trees or Reference Monuments:

Species	Dia.	Bearing	Distance
Apple	5"	S56°E	58 links
Ash	12"	N59°E	74 links

Notes: In April 1874, Owen County Surveyor James King notes setting a stone marked 1, midway from Se corner of Section and ¼ Section corner but makes no mention of monumentation at the Section or ¼ Section corners (Owen County Survey Book 2, page 366). Then on Oct.1, 1903, Owen County Surveyor Geo D Phillips notes setting a stone marked D (Found this survey) midway between the Northeast and North quarter corners of the Section but makes no mention of monumentation at the Section or ¼ Section corners (Owen County Survey Book 2, Page 371).

OTHER SURVEY HISTORY: Include details such as surveyor name, date, recording info, monument description, etc.

Document Date	Survey ID	Surveyor	Description	Instrument No
6/26/1995	RSID005375	Ross Holloway	John Burns Retracement S27&34-11-2W	9507155
6/23/1998	RSID004118	Mundy, Michael D	Retracement survey for Whiffen-Bowman. Larry R. Bowman & Ursula Bowman, Donald S. Whiffen & Cheryl Whiffen.	

ORIGINAL OR SUBSEQUENT SURVEY EVIDENCE FOUND BY THE MONROE COUNTY SURVEYORS OFFICE: Include, search area or areas, search procedure, etc.



OFFICE OF THE MONROE COUNTY SURVEYOR • Trohn Enright-Randolph

501 N Morton Street Ste 205, Bloomington, IN 47404 • 812-349-2570 • surveyorsoffice@co.monroe.in.us

Report Sheet # 26 of 34

Page 2 of 4

MONUMENT RECORD

Corner ID: **BeanBI_m21**

Section Corner Sections 27, 28, 33 & 34- T11N-R02W, 2nd P.M.

This monument is on the County Line between
Ray Township, Morgan County, Indiana
And Wayne Township, Owen County, Indiana
Though not in Monroe County, this corner is also, in places, referred to as
Bean Blossom Township, Monroe County, Indiana

Section 28 T11N-R02W	Section 27 T11N-R02W
Section 33 T11N-R02W	Section 34 T11N-R02W

Date of Field work/Search: 1/22/2024 *By:* M Sheppard, J George *Monument Found:* 1/2" Rebar *BTs or Reference Objects Found:* No, but new references were made *Project #:* 24-001 *Field Book:* 55, page 63.

OTHER EVIDENCE: *Describe corner location relative to nearby features and how to reach the corner location – note fences, roads, timber cutting lines, mow lines, clearings, plantings, streams, topo changes, etc.*

The rebar is at the east edge of a crop field/west edge of an overgrown area of grass and small trees, which are on State of Indiana property. We reached the corner by driving down (South) a farm lane that intersects Lingle road in Morgan County, a quarter mile east of the Owen/Morgan County line. From Lingle road, we proceeded south on the farm lane approximately 3/4 of a mile, parked and walked west across an area of grass and small trees, approximately 1200' to the monument.

MONUMENT PRESERVATION: *Describe work done to preserve existing monument.*

We uncovered the monument, located it with a Javad GPS Receiver and set a steel post with Monroe County Survey marker sign, 3.6' above ground, facing West, 0.3' Northwest of the rebar. We also located a couple small trees for visual reference, though trees in the immediate area are sparse, small and unhealthy.

THEORY OF LOCATION: *Describe the theory of location for acceptance of this monument. Include monument origin and associated uncertainty.*

The rebar was found. The first modern record history of this monument is a survey by Ross Holloway PLS dated June 26, 1995, recorded in Survey Book 5, page 180 (instrument#9507155) in the Morgan County Recorder's Office, Monroe County Surveyors Office Document #RSID005375. In said survey Mr. Holloway cites it as a 5/8" rebar, 1.6' below ground and notes "No History" but accepted as the Section corner. A Later survey by Michael Mundy PLS, dated June 23, 1998, in Monroe County Surveyors Office records as RSID 004118, also cites a 5/8" "iron pin" at the corner "accepted by Ross Holloway". I believe the 1/2" rebar found this survey is the same rebar found by the other surveyors. We scanned a large area and found no other monumentation other than a steel post stub shown on the tie sheet created this survey. The rebar undoubtedly has several feet of uncertainty as to being where the original monument really was, due to historical lack of preservation, however its position relative to other monuments and occupation lines makes it in my opinion the most reliable evidence of the original location of the corner.

GEODETIC COORDINATES: *Northing:* 1496145.0 *Easting:* 3080684.9

BASIS OF GEODETIC COORDINATES:

The basis of bearings is Grid North NAD83(2011), Indiana West Zone, Epoch 2010.0000, Geoid Model G2012BU7, Datum NAD83_NO_TRANS, US Survey Feet, derived from GPS observations utilizing the Indiana Real-Time Network (INCORS). Coordinate data was collected with a Javad Triumph LS Network Rover and/or with a Sokkia Set 510 Total Station radially from points located with GPS. Distances obtained with GPS have not been adjusted to ground. To adjust grid distances to ground distances multiply them by a scale factor of 1.000041208.

This document is not complete without the associated Corner Perpetuation plat and report of survey for Section 33 Township 11 North Range 2 West by Michael E. Sheppard of the Monroe County Surveyor's Office dated June 18, 2024.



OFFICE OF THE MONROE COUNTY SURVEYOR • Trohn Enright-Randolph

501 N Morton Street Ste 205, Bloomington, IN 47404 • 812-349-2570 • surveyoroffice@co.monroe.in.us

Report Sheet # 27 of 34

Page 3 of 4

MONUMENT RECORD

Corner ID: **BeanBI_m21**

Section Corner Sections 27, 28, 33 & 34- T11N-R02W, 2nd P.M.

This monument is on the County Line between
Ray Township, Morgan County, Indiana
And Wayne Township, Owen County, Indiana
Though not in Monroe County, this corner is also, in places, referred to as
Bean Blossom Township, Monroe County, Indiana

Section 28 T11N-R02W	Section 27 T11N-R02W
Section 33 T11N-R02W	Section 34 T11N-R02W

CERTIFICATIONS:



OFFICE OF THE MONROE COUNTY SURVEYOR • Trohn Enright-Randolph

501 N Morton Street Ste 205, Bloomington, IN 47404 • 812-349-2570 • surveyoroffice@co.monroe.in.us

Report Sheet # 28 of 34

Page 4 of 4

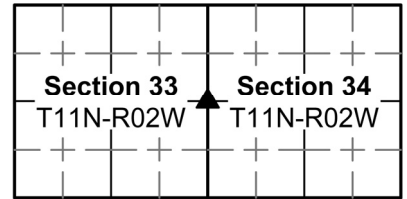
MONUMENT RECORD

Corner ID: **BeanBI_m23**

Quarter Corner

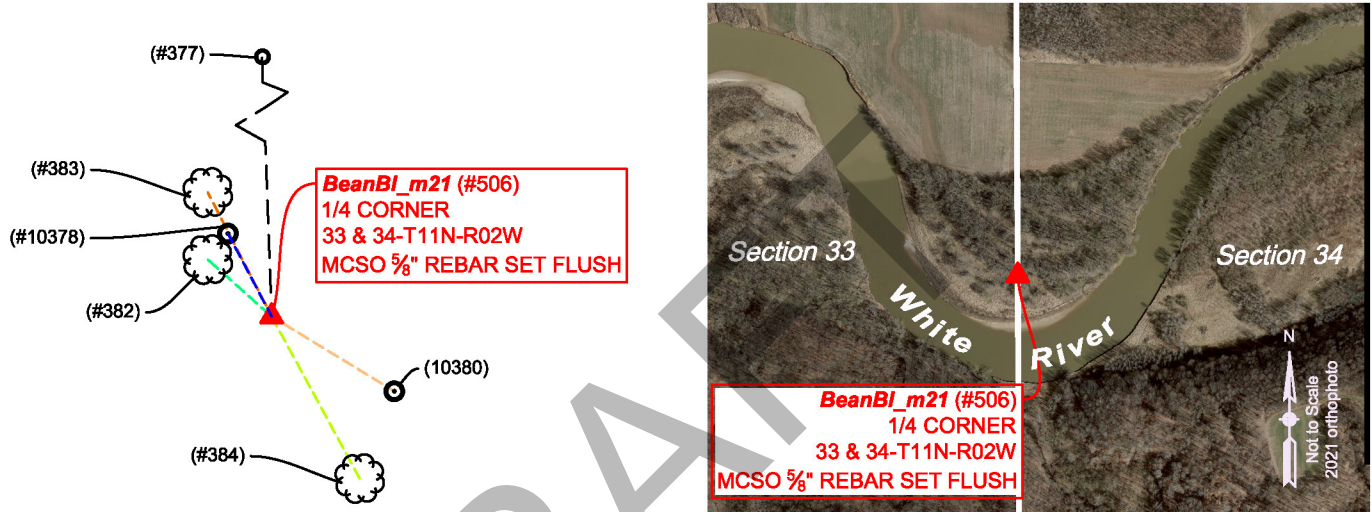
Sections 33 & 34- T11N-R02W, 2nd P.M.

This corner is on the line between Ray Township Morgan County (to the East) and Wayne Township Owen County (to the West), though not in Monroe County, it is, in places, noted as Bean Blossom Township, Monroe County, Indiana



MONUMENT: Describe monument set or found (Include material type, scribing, distance above/below grade, dimensions.)
 (#506) Set 5/8" diameter rebar with (24" long), with 2" diameter aluminum cap inscribed MONROE COUNTY SURVEYORS OFFICE SHEPPARD PLS#20100021, with top flush with ground, in a wooded area North of White River.

MONUMENT LOCATION SKETCH:



WITNESS MONUMENT TIES: Describe at least three new BT's (Bearing Trees) and/or witness objects established or work done to preserve existing evidence. BT diameters are noted as dbh (diameter at breast height) and are measured approximately 4.5' above ground. Bearings and Distances are measured from the monument to the center of the BT. Bearings and Distances to witness ties were measured with a Sokkia Set 510 Total Station.

ID	Bearing	Distance	Description
(#383)	N27° 17'W	58.0'	7" diameter box elder tree
(#384)	S28° 32'E	76.7'	26" diameter cottonwood tree
(#382)	N48° 19'W	35.6'	10" diameter twin mulberry tree

MONUMENT ACCESSORIES

Other survey grade monuments that were located in the vicinity and their relation to the monument. Witnesses noted as a Rebar Lite are a 5/8" diameter by 16" polycarbonate rod with a 1-1/2" mag nail in top and yellow plastic cap stamped "MONROE COUNTY WITNESS POINT" set 0.1 foot below grade unless otherwise noted.

Geodetic coordinates in this table are provided in the format Northing, Easting.

(#10378)	N27° 49' 21"W	39.02'	N:1493515.4135' E: 3080680.2892' Rebar Lite
(#10380)	S58° 39' 49"E	59.80'	N:1493449.8071' E:3080749.5770' Rebar Lite
(#377)	N01° 55' 15"W	472.80'	N: 1493953.4370 ' E:3080682.6530' 1" inside diameter galvanized pipe with remnants of old Dorman cap in top, found 0.7' above ground



OFFICE OF THE MONROE COUNTY SURVEYOR • Trohn Enright-Randolph

501 N Morton Street Ste 205, Bloomington, IN 47404 • 812-349-2570 • surveyorsoffice@co.monroe.in.us

Page 1 of 3

MONUMENT RECORD

Corner ID: **BeanBI_m23**

Quarter Corner

Sections 33 & 34- T11N-R02W, 2nd P.M.

This corner is on the line between Ray Township Morgan County (to the East) and Wayne Township Owen County (to the West), though not in Monroe County, it is, in places, noted as Bean Blossom Township, Monroe County, Indiana

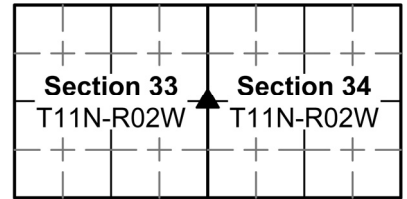


PHOTO IDENTIFIED: Photo Date: 03-21-2024



Photo Orientation & Description: From above



Photo Orientation & Description: From Northwest looking Southeast

EXISTING SURVEY HISTORY Include as much detail and history of the corner as known at the time of perpetuation

ORIGINAL GOVERNMENT SURVEY:

Year Surveyed: 1819 By: Thos Brown

Where filed or recorded: Owen County Original Notes, page 3.

Original monument: Post

Bearing Trees or Reference Monuments:

Species	Dia.	Bearing	Distance
Hackberry	26"	N43°W	10 Links
Sugar	14"	S19°E	8 Links

Notes:

SUBSEQUENT CORNER RESTORATION:

Though I found no Subsequent corner restoration for this corner, I did find, in Owen County Survey Book 2, page 396, where Owen County Surveyor Charles Hartsock approved a survey that cited a distance from this corner to the Northeast corner of Section 33 as 2686', but it did not cite any monuments at either corner.

OTHER SURVEY HISTORY: Include details such as surveyor name, date, recording info, monument description, etc.

Date	RSID	Surveyor	Description	File Location
None Found				

ORIGINAL OR SUBSEQUENT SURVEY EVIDENCE FOUND: Include, search area or areas, search procedure, etc.

Date of Field work/Search: 03/21/2024 By: MES/JMG Monument Found: Rebar Set BTs or Reference Objects Found: References established Project #: 24-001 Field Book: 56, pages 21 & 22 Notes:

OTHER EVIDENCE: Describe corner location relative to nearby features and how to reach the corner location – note fences, roads, timber cutting lines, mow lines, clearings, plantings, streams, topo changes, etc.

There is no occupation visible evidence in the vicinity of the corner. The corner is in a woods between White River to the South and a crop field to the North. We reached the corner by driving down (South) a farm lane that intersects Lingle road in Morgan County, a quarter mile east of the Owen/Morgan County line, then driving across a dormant crop field to within 500' of the corner.

MONUMENT PRESERVATION: Describe work done to preserve existing monument.

Rebar was set to mark the corner. A steel post was set, with Monroe County witness sign, attached, 3' above ground facing North, 0.3' South of the rebar. We took tree references for visual reference and set 2 rebarlites within sight of the rebar that could be used to reestablish its location should it become obliterated.



OFFICE OF THE MONROE COUNTY SURVEYOR • Trohn Enright-Randolph

501 N Morton Street Ste 205, Bloomington, IN 47404 • 812-349-2570 • surveyorsoffice@co.monroe.in.us

MONUMENT RECORD

Corner ID: **BeanBI_m25**

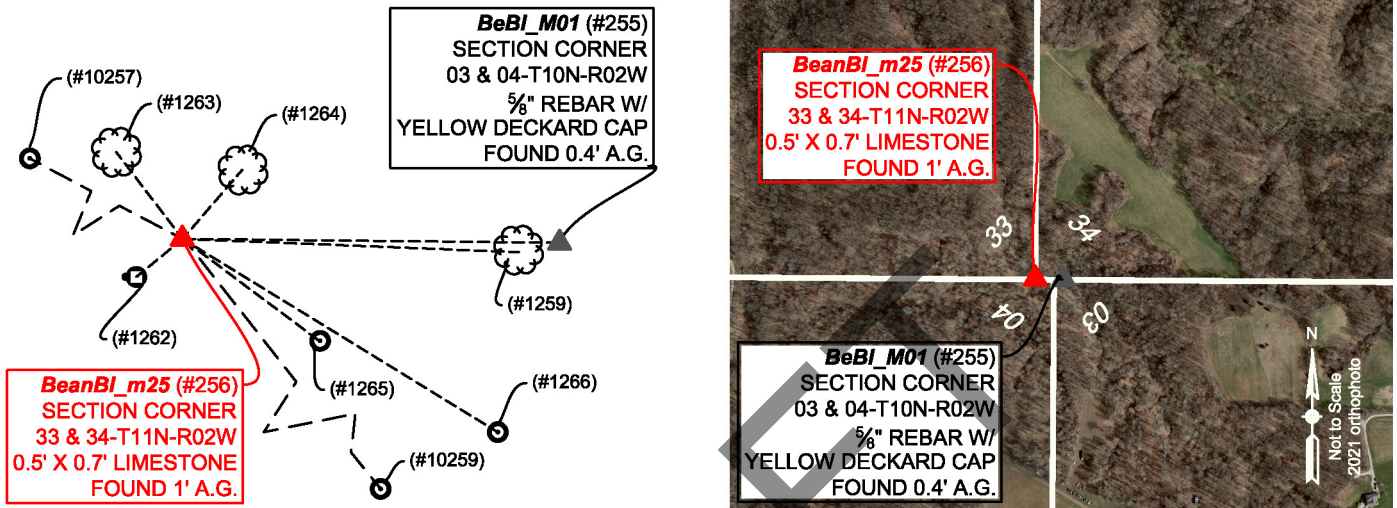
Section Corner

Sections 33 & 34- T11N-R02W, 2nd P.M.
Bean Blossom Township, Monroe County, Indiana

Section 33 T11N-R02W	Section 34 T11N-R02W
Section 04 T10N-R02W	Section 03 T10N-R02W

MONUMENT: Describe monument set or found (Include material type, scribing, distance above/below grade, dimensions.)
(#256) 0.5' north-south X 0.7' east-west limestone found 1.0' above ground, with X on top.

MONUMENT LOCATION SKETCH:



WITNESS MONUMENT TIES: Describe at least three new BT's (Bearing Trees) and/or witness objects established or work done to preserve existing evidence. BT diameters are noted as dbh (diameter at breast height) and are measured approximately 4.5' above ground. Bearings and Distances are measured from the monument to the center of the BT. Bearings and Distances to witness ties were measured with a Sokkia Set 510 Total Station.

ID	Bearing	Distance	Description
(#1263)	N37° 26' W	28.5'	22" diameter poplar tree
(#1264)	N40° 46' E	23.7'	21" diameter pignut hickory tree
(#1262)	S50° 33' W	15.59'	Mag nail in washer set 9" up on west side of 4' tall, 8" diameter wood post
(#1259)	S38° 18' E	197.5'	20" Red Oak

MONUMENT ACCESSORIES

Other survey grade monuments that were located in the vicinity and their relation to the monument. Witnesses noted as a Rebar Lite are a 5/8" diameter by 16" polycarbonate rod with a 1-1/2" mag nail in top and yellow plastic cap stamped "MONROE COUNTY WITNESS POINT" set 0.1 foot below grade unless otherwise noted.

Geodetic coordinates in this table are provided in the format Northing, Easting

(#1265)	S53° 15' 10"E	44.80'	N:1490790.0534 E:3080748.0373 Rebar Lite
(#1266)	S58° 28' 30"E	96.12'	N:1490766.5983 E:3080794.0737 Rebar Lite
(#255)	S89° 24' 30"E	98.02'	N:1490815.8444 E:3080810.1546 BeBI_M01 Deckard PLS capped rebar found 0.4' above ground
(#2259)	S38° 19' 12"E	197.44'	N:1490661.9512 E:3080834.5646 6" long magnetic nail set flush with ground
(#10257)	N62° 22' 34"W	133.36'	N:1490878.6935 E:3080593.97736" 6" long magnetic nail set flush with ground



OFFICE OF THE MONROE COUNTY SURVEYOR • Trohn Enright-Randolph

501 N Morton Street Ste 205, Bloomington, IN 47404 • 812-349-2570 • surveyoroffice@co.monroe.in.us

MONUMENT RECORD

Corner ID: **BeanBI_m25**

Section Corner

Sections 33 & 34- T11N-R02W, 2nd P.M.
 Bean Blossom Township, Monroe County, Indiana

Section 33 T11N-R02W	Section 34 T11N-R02W
Section 04 T10N-R02W	Section 03 T10N-R02W

PHOTO IDENTIFIED: Photo Date: 02/01/2024



Photo Orientation & Description: From above



Photo Orientation & Description: From South looking North

EXISTING SURVEY HISTORY Include as much detail and history of the corner as known at the time of perpetuation

ORIGINAL GOVERNMENT SURVEY:

Year Surveyed: 1819 By: William Harris Deputy Surveyor
 Where filed or recorded: Original notes, page 235
 Original monument: post
 Bearing Trees or Reference Monuments:

Species	Dia.	Bearing	Distance
Beech	6"	N65°W	19 Links
Beech	10"	N4°E	29 Links

Notes: From South ½ mile Post, Mr. Harris notes running East 40 chains to set this post, citing it as (temporary qr. Sec. post on the true line"). I never found where the "temporary" post was ever reset, so it apparently became the permanent post.

SUBSEQUENT CORNER RESTORATION:

Though I found no new ties after the original 1819 survey or origin of the stone, I did find where in 1892, Monroe County Surveyor George Rader used the corners' location to establish stones North and West of it in Legal Survey Book 1, page 478.

OTHER SURVEY HISTORY: Include details such as surveyor name, date, recording info, monument description, etc.

Date	RSID	Surveyor	Description	File Location
5/27/1998	RSID004119	Mundy, Michael D	Norman Walls Survey, survey of proposed new parcel.	Surveyors Office
6/23/1998	RSID004118	Mundy, Michael D	Retracement survey for Whiffen-Bowman. Larry R. Bowman & Ursula Bowman, Donald S. Whiffen & Cheryl Whiffen. Also included are corner ID's; BeanBI_M25, BeanBI_N23-N25, and BeanBI_O21-O25.	Surveyors Office
11/3/2000	RSID004134	Guerrettaz, Bernard	survey Drawing, John Summit Subd. BeanBI_N25/BeanBI_O25-T11N-R02W are also included on plat.	Surveyors Office
12/20/2019	RSID003659	Knoy, Matthew M.	Martin Family Sliding Scale Subd. Final plat	2020002711.IN

ORIGINAL OR SUBSEQUENT SURVEY EVIDENCE FOUND BY THE MONROE COUNTY SURVEYORS OFFICE: Include, search area or areas, search procedure, etc.

Date of Field work/Search: November 23, 1998 By: Kevin Enright, Mark Taubensee Monument Found: Stone BTs or Reference Objects Found: yes Project #: 98-02 Field Book: 98-02 (30), page 40. Notes: 2 of the 3 trees noted in 1998 are now gone.

SUBSEQUENT SURVEY EVIDENCE FOUND BY THE MONROE COUNTY SURVEYORS OFFICE: Include, search area or areas, search procedure, etc.

Date of Field work/Search: 1/30/2024, 03/25/2024 By: MES/JMG Monument Found: Stone BTs or Reference Objects Found: yes Project #: 24-001 Field Book: 55, pages 72&73, Field Book 56, page 24 Notes:



OFFICE OF THE MONROE COUNTY SURVEYOR • Trohn Enright-Randolph

501 N Morton Street Ste 205, Bloomington, IN 47404 • 812-349-2570 • surveyorsoffice@co.monroe.in.us

MONUMENT RECORD

Corner ID: **BeanBI_m25**

Section Corner

Sections 33 & 34- T11N-R02W, 2nd P.M.
Bean Blossom Township, Monroe County, Indiana

Section 33 T11N-R02W	Section 34 T11N-R02W
Section 04 T10N-R02W	Section 03 T10N-R02W

OTHER EVIDENCE: Describe corner location relative to nearby features and how to reach the corner location – note fences, roads, timber cutting lines, mow lines, clearings, plantings, streams, topo changes, etc.

We parked at a house at 6980 West Wampler Road Gosport In. We walked North and West from said house, into and around a cow pasture, following an electric fence along the crest of a ridge. The stone is on top of hill, just North of the electric fence. To the South is several old cars and trucks in the woods.

MONUMENT PRESERVATION: Describe work done to preserve existing monument.

Stone was flagged, GPS located, references made to it and a steel post with Monroe County Surveyors Office witness sign facing South was placed on the North side of the stone.

THEORY OF LOCATION: Describe the theory of location for acceptance of this monument. Include monument origin and associated uncertainty.

Stone was found. It is known to have been used by numerous surveyors in modern history. Its location relative to other old survey monuments and occupation lines, makes it, in my opinion, the most reliable evidence of the originally established location of the Southeast corner Section 33/Southwest corner of S34 Township 11 North Range 2 West, with negligible uncertainty.

GEODETIC COORDINATES: Northing: 1490816.9, Easting: 3080712.1

BASIS OF GEODETIC COORDINATES:

The basis of bearings is Grid North NAD83(2011), Indiana West Zone, Epoch 2010.0000, Geoid Model G2012BU7, Datum NAD83_NO_TRANS, US Survey Feet, derived from GPS observations utilizing the Indiana Real-Time Network (INCORS). Coordinate data was collected with a Javad Triumph LS Network Rover and/or with a Sokkia Set 510 Total Station radially from points located with GPS. Distances obtained with GPS have not been adjusted to ground. To adjust grid distances to ground distances multiply them by a scale factor of 1.000041208.

This document is not complete without the associated Corner Perpetuation plat and report of survey for Section 33, Township 11 North Range 2 West, by Michael E. Sheppard of the Monroe County Surveyor's Office dated June 18, 2024.

CERTIFICATIONS:

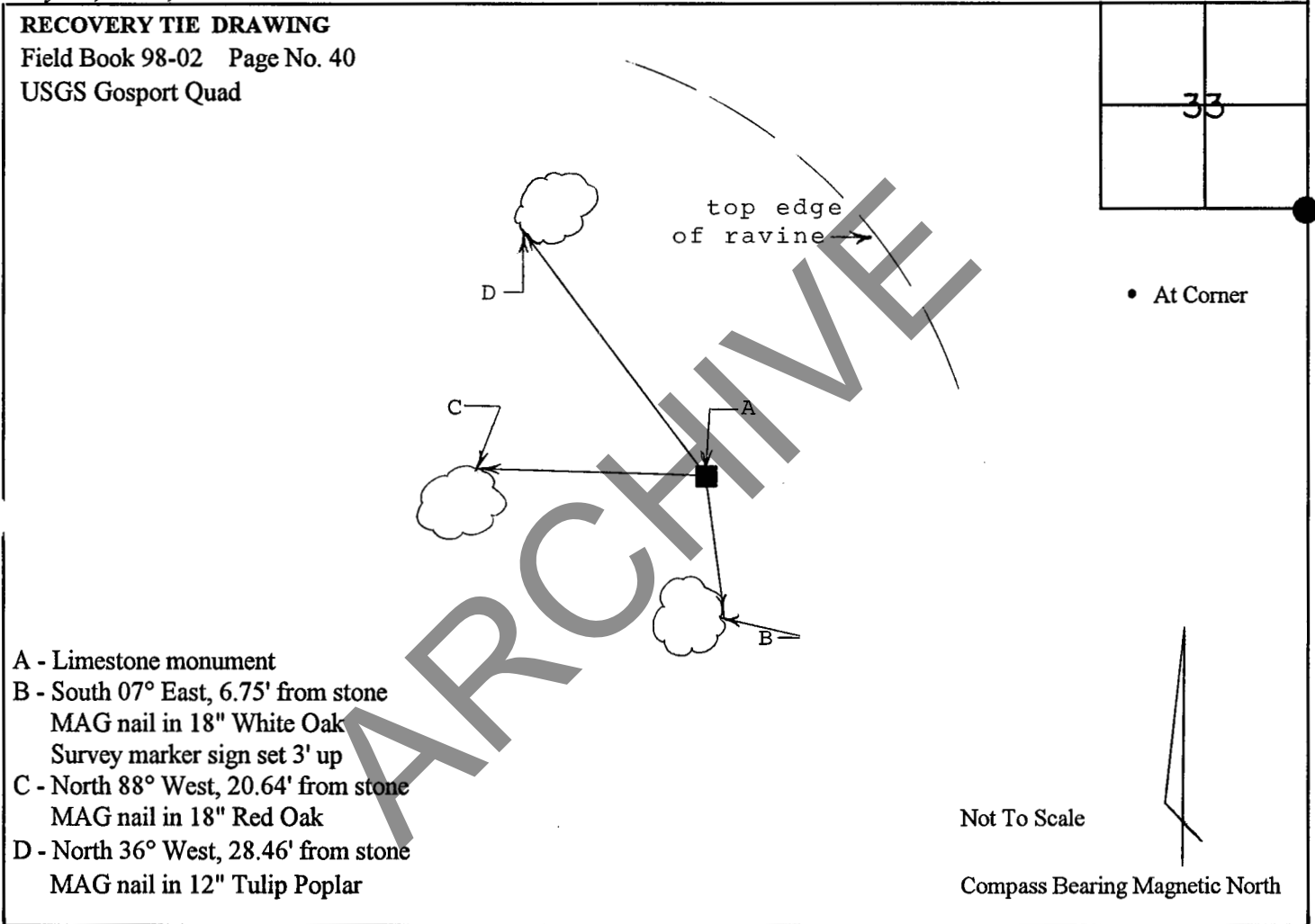


MONUMENT RECORD
State of Indiana - County of Monroe

Section: 33 Township: 11 North Range: 2 West Corner ID: Be Bl m-25

Monument Description & Remarks: Found Limestone monument at SE corner of section. Stone measured 0.64' (h) x 0.75' (l) x 0.43' (w); marked with distinct scrapes along top.

References on file in the County Surveyor's Office: Survey by Michael Mundy, R.L.S. No. 880014, dated May 27, 1998, for Norman and Glora Mae Walls.



I, Kevin P. Enright, Monroe County Surveyor, hereby certify that this document was prepared under my direction in accordance with the provisions of Section 36-2-10 of the Indiana Code; and the above data is given under my hand and seal this 23rd day of November, 1998.

Kevin P. Enright

Administered by Surveyor Review Board