

MEETING MINUTES

**SURVEYOR REVIEW BOARD
501 N. Morton Ave. Room 211
HYBRID MEETING Via Teams App
Tuesday, June 18, 2024, 4:00 PM**

MEMBERS PRESENT: Rachel Oser, Eric Deckard

MEMBERS ABSENT: Todd Borgman

STAFF: Trohn Enright-Randolph (County Surveyor), Jason George (Survey Technician), Mike Sheppard (Professional Surveyor), Donna Barbrick (Secretary)

I. Call to Order by Trohn Enright Randolph at 4:03pm

II. Approval of agenda. Motion to approve by Rachel Oser; seconded by Eric Deckard.

VOTE: AYE. Agenda approved.

III. Approval of minutes from April 16, 2024. Motion to approve by Deckard; seconded by Oser. VOTE: AYE. Minutes approved.

IV. New Business

- a. **Office Update.** Trohn indicated that there could be another round of service agreements. He also mentioned the new Part Time Field Assistant, Ethan Phillips.

V. Certification of corners:

- a. **Corner Documentation Program: N/A**

b. **County Surveyor Perpetuation: BeanBl_i21*, BeanBl_i23*, BeanBl_i25*, BeanBl_k21*, BeanBl_k23*, BeanBl_k25, BeanBl_m21*, BeanBl_m23*, BeanBl_m25**

**Has no previous certification*

Trohn said he would recommend letting Mike Sheppard go through the survey and then approve corners at the end.

BeanBl_m21. Sheppard said this was a found rebar. He said there are no real lines of occupation. He talked about previous surveys by Holloway and by Mundy. He said this monument is on the county line between Morgan County and Owen County; though not in Monroe County, this corner is also sometimes referred to as Bean Blossom Township, Monroe County.

BeanBl_i21. Sheppard noted a really cool stone found to the east (BeanBl_i21-.5. He said that corner does not have a tie sheet but is in the report. Trohn noted the corners outside of Monroe County will not be added to the quota for the year. He said we have a rule of thumb that if it's a stone and it's called out, we will perpetuate it. Oser said I think you're perpetuating it by putting it on the survey.

BeBl_k21. Trohn commented that none of these corners have been part of our official records, so we do not have a lot to go off of with some of them. Sheppard said he set a 5/8 rebar with aluminum cap.

BeBl_i21. Sheppard said he set a rebar, 19 feet west of the stone that is an accepted 32nd corner. Trohn read from the theory of location.

BeanBl_i23. Sheppard said there was a stone found there and then a rebar was set. He said the stone had a cross on it and it is a reference stone. He set a rebar based on the reference stone. Deckard had a comment about the labeling in the sketch and in the map. There were two topographical errors noted. Trohn said the longer name designates 11 North corners.

BeanBl_i25. Sheppard said this was an offset corner. He said there was a Harrison monument was set incorrectly in 2024 by him; this was moved to the correct location by him on 5/9/2024. He went through the theory of location. There was a discussion of discrepancies and survey records were brought up for the board's review. Deckard said he would lean toward what Mike has for this one.

BeBl_K01 and BeanBl_k25. Concrete post found at fence corner.

BeanBl_m25. Limestone found with X on top.

BeanBl_m23. Rebar set proportionally by Sheppard, in a wooded area north of White River.

BeanBl_k23. Center of section calculated and a 5/8" rebar with aluminum cap set. There was a discussion of the center corner offset.

Oser made a motion to approve and said I am referring to 11 North Range 2 West for all of these:

BeanBl_i21, BeanBl_i23, BeanBl_i25, BeanBl_k21, BeanBl_k23, BeanBl_k25, BeanBl_m21, BeanBl_m23, and BeanBl_m25 with condition of correction on I23 of red box in the monument record to correct the typo of the label.

Seconded by Deckard. Trohn noted a motion and a second with one condition.

VOTE AYE (unanimous). Motion carried.

VI. Public input: None.

VII. Adoption of next meeting date: July 16

VIII. Adjournment at 5:13 pm

Minutes approved _____

Secretary _____

MONUMENT RECORD

Corner ID: **TwpCor VI**

Section Corner

Sections 1-T07N-R02W, 6-T07N-R01W

31-T08N-R01W, 36-T08N-R02W

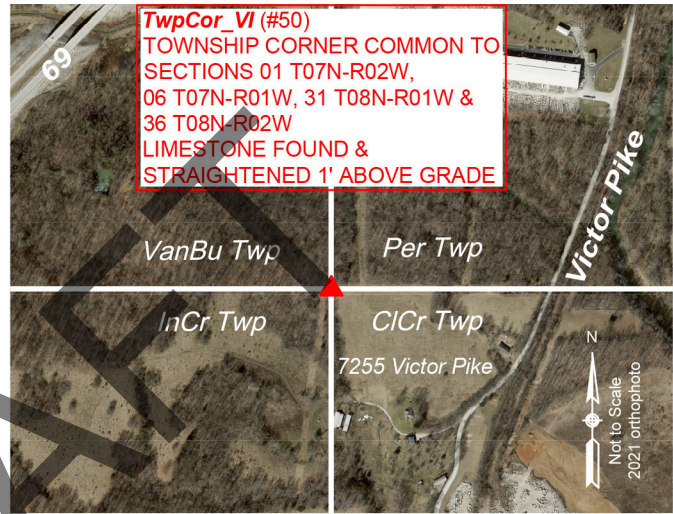
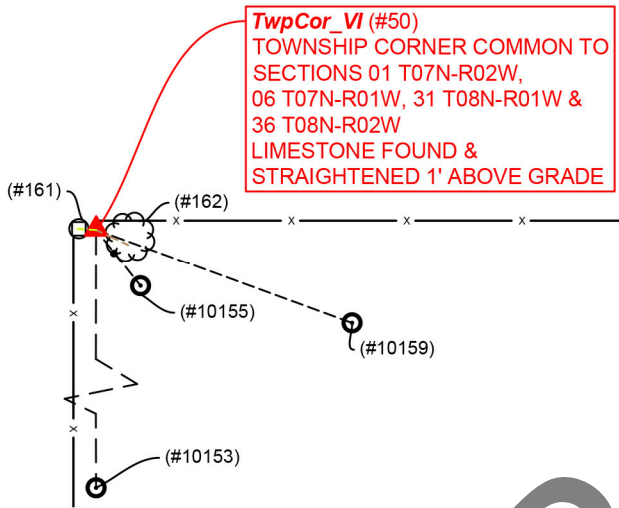
2nd P.M.

Indian Creek, Clear Creek, Perry & Van Buren Townships, Monroe County, Indiana

MONUMENT: Describe monument set or found (Include material type, scribing, distance above/below grade, dimensions.)

0.7' X 0.65' Limestone with + on top, (point #50) initially found knocked over, 1' above ground, on the south side of an old east-west fence line. We dug out under and around stone and reset it such that top is now 0.1' above ground. The stone was reset in such a manner that the + on top was placed ± back at the location it was when Rachel Oser located it on 11-03-2016 in field book 48, page 37, per the coordinates she gathered on that date.

MONUMENT LOCATION SKETCH:



WITNESS MONUMENT TIES: Describe at least three new BT's (Bearing Trees) and/or witness objects established or work done to preserve existing evidence. BT diameters are noted as dbh (diameter, at breast height) and are measured approximately 4.5' above ground. Bearings and Distances are measured from the monument to the center of the BT. Bearings and Distances to witness ties were measured with a Sokkia Set 510 Total Station.

ID	Bearing	Distance	Description
(#162)	N62°53'E	2.0	6" Sassafras Tree with top cut out 6' up-tree has resprouted above cut. Survey marker sign on Southwest side of tree facing South, 4.5' up.
(#161)	N86°32'W	9.6'	Wood corner post at old east-west and South fence corner.

MONUMENT ACCESSORIES

Other survey grade monuments that were located in the vicinity and their relation to the monument. Witnesses noted as a Rebar Lite are a 5/8" diameter by 16" polycarbonate rod with a 1-1/2" mag nail in top and yellow plastic cap stamped "MONROE COUNTY WITNESS POINT" set 0.1 foot below grade unless otherwise noted.

Geodetic coordinates in this table are provided in the format Northing, Easting

(#10155)	S38d15' 05" E	31.46'	N:1395474.3123' E:3097556.5081' Rebar Lite in corner of grass field
(#10159)	S69d 53' 57" E	141.88'	N:1395454.9671' E:3097666.5530' Rebar Lite in grass field under center of power line
(10153)	S00° 11' 43"E	5070.53'	N:1390433.2259' E:3097550.5873' 5/8" rebar found 0.1' below ground



OFFICE OF THE MONROE COUNTY SURVEYOR • Trohn Enright-Randolph

501 N Morton Street Ste 205, Bloomington, IN 47404 • 812-349-2570 • surveyoroffice@co.monroe.in.us

MONUMENT RECORD

Corner ID: **TwpCor VI**

Section Corner

Sections 1-T07N-R02W, 6-T07N-R01W

31-T08N-R01W, 36-T08N-R02W

2nd P.M.

Indian Creek, Clear Creek, Perry & Van Buren Townships, Monroe County, Indiana

PHOTO IDENTIFIED: Photo Date: 5/20/2024



Photo Orientation & Description: From Southeast looking Northwest



Photo Orientation & Description: From Above

EXISTING SURVEY HISTORY *Include as much detail and history of the corner as known at the time of perpetuation*

ORIGINAL GOVERNMENT SURVEY:

Year Surveyed: 1811 By: Alexander Holmes Deputy Surveyor

Where filed or recorded: Original Notes Page 10 & 11

Original monument: Post

Bearing Trees or Reference Monuments:

Species	Dia.	Bearing	Distance
Beech	12"	N73°W	12 Links
W. Oak	30"	S40°E	23 Links

Notes:

SUBSEQUENT CORNER RESTORATION:

Date Surveyed: Oct. 11, 1902. By: George B. Rader

Where filed or recorded: Legal Survey Book 2, Page 582

Original monument: Not Noted

Bearing Trees or Reference Monuments:

Species	Dia.	Bearing	Distance
Ash	12"	S65°E	3 Links
B. Walnut	10"	S75 1/2°W	14 Links

Notes: Notes corner as perpetuated

OTHER SURVEY HISTORY: *Include details such as surveyor name, date, recording info, monument description, etc.*

Date	RSID	Surveyor	Description	File Location
	RSID002541	Rector, Shaun P.	Danny Abram Minor Subd. Final Plat Amend. 3	2019003430.IN
10/11/1902	RSID003157	Rader, George	Legal Survey in Section 6-T7N-R1W Includes west line of Ketcham Cemetery	



OFFICE OF THE MONROE COUNTY SURVEYOR • Trohn Enright-Randolph

501 N Morton Street Ste 205, Bloomington, IN 47404 • 812-349-2570 • surveyorsoffice@co.monroe.in.us

MONUMENT RECORD

Corner ID: **TwpCor VI**

Section Corner

Sections 1-T07N-R02W, 6-T07N-R01W

31-T08N-R01W, 36-T08N-R02W

2nd P.M.

Indian Creek, Clear Creek, Perry & Van Buren Townships, Monroe County, Indiana

3/20/1929	RSID004898	Farewell	Indiana Limestone Company - Bedford, Indiana - Property Survey of Section 31 in Perry Township	
5/6/1950	RSID001263	Prall, Nelson L.	Ingals Stone Co. Land in Monroe Co. including the Shawnee Tract. Original Calc sheets and field notes on file in MCSO.	
1/2/1975	RSID001269	Prall, Nelson L.	Plat of 192.36 acres for Ingalls Stone Co. Original Calc sheets and field notes on file in MCSO.	
9/22/1975	RSID001268	Prall, Nelson L.	Plat of survey in Sec 36 made for Cecil Sasser. Original Calc sheets and field notes on file in MCSO.	
5/12/1984	RSID001144	Prall, Nelson L.	41.81 acre survey	
5/12/1984	RSID001260	Prall, Nelson L.	Plat of Survey of North and West lines of Deed Record 85 on Page 364 made for Myron Edgeworth Jr. - President Victor Bluff Stone Co. Original Calc sheets and field notes on file in MCSO.	
3/6/2002	RSID001492	Graham, Charles D	Danny Abram Minor Subd. 49.53 acres total	2002008716.IN
8/6/2003	RSID001495	Graham, Charles D	50 acre survey. Danny Abram Minor Subdivision Final Plat Amend. One	2003026939.IN
2/16/2006	RSID002157	James, Marty J.	75.61 acre survey - Victor Oolitic Stone Co.	2006005417.IN
3/29/2006	RSID001168	James, Marty J.	Type "E" Victor Pike Admin. Subd.	
2/22/2008	RSID000677	Bledsoe, Ben E.	Original Boundary survey Ketcham Road for Deckard	2008019261.IN
9/26/2011	RSID001137	Smith, Stephen L.	Ketcham Boundary Survey - Eads Minor Subdivision Lot 4	2011015300.IN
3/9/2015	RSID000248	Smith, Stephen L.	Luke Ridge Type E Admin Subdivision	2015003506.IN
8/5/2015	RSID002155	James, Marty J.	ALTA/ACSM Land Title Survey - 6700 S. Victor Pike for Whaley Investments, Inc.	2016001735.IN
6/4/2018	RSID003941	Graham, Charles D	Whitehall Crossing Subd. Amendment 9	2020007779.IN

ORIGINAL OR SUBSEQUENT SURVEY EVIDENCE FOUND BY THE MONROE COUNTY SURVEYORS OFFICE: *Include, search area or areas, search procedure, etc.*

Date of Field work/Search: Dec. 30, 2012 *By:* Kevin Enright *Monument Found:* Stone *BTs or Reference Objects Found:* References made *Project #:* not noted *Field Book:* 46, page 07 *Notes:*

ORIGINAL OR SUBSEQUENT SURVEY EVIDENCE FOUND BY THE MONROE COUNTY SURVEYORS OFFICE: *Include, search area or areas, search procedure, etc.*

Date of Field work/Search: Nov. 03, 2016 *By:* Rachel Oser *Monument Found:* Stone *BTs or Reference Objects Found:* Yes, References from MCSO in 2012 found *Project #:* 2016-004 *Field Book:* 48, page 37 *Notes:* Found stone as described by Kevin Enright in 2012.

ORIGINAL OR SUBSEQUENT SURVEY EVIDENCE FOUND BY THE MONROE COUNTY SURVEYORS OFFICE: *Include, search area or areas, search procedure, etc.*

Date of Field work/Search: March 20, 2024 & May 20, 2024. *By:* Michael Sheppard/Jason George *Monument Found:* disturbed stone *BTs or Reference Objects Found:* Yes *Project #:* 24-002 *Field Book:* 56, pages 20 & 44 *Notes:* Found stone knocked over. Re-set stone such that + on top was in original location, now 0.1' above ground.

OTHER EVIDENCE: *Describe corner location relative to nearby features and how to reach the corner location – note fences, roads, timber cutting*



OFFICE OF THE MONROE COUNTY SURVEYOR • Trohn Enright-Randolph

501 N Morton Street Ste 205, Bloomington, IN 47404 • 812-349-2570 • surveyorsoffice@co.monroe.in.us

MONUMENT RECORD

Corner ID: **TwpCor VI**

Section Corner

Sections 1-T07N-R02W, 6-T07N-R01W

31-T08N-R01W, 36-T08N-R02W

2nd P.M.

Indian Creek, Clear Creek, Perry & Van Buren Townships, Monroe County, Indiana

lines, mow lines, clearings, plantings, streams, topo changes, etc.

Stone is against the South side of an old east-west fence line, 9.6' east of where fence corners east-west and south, near the Northwest corner of a grass field behind a (currently abandoned) house at 7255 South Victor Pike, Bloomington Indiana.

MONUMENT PRESERVATION: *Describe work done to preserve existing monument.*

Finding the stone knocked over, we removed it, dug around and under it and re-set it in a location such that the + on top is ± where it was when Rachel Oser GPS located it in 2016. We left the top of the stone 0.1' above ground.

THEORY OF LOCATION: *Describe the theory of location for acceptance of this monument. Include monument origin and associated uncertainty.*

The stone was found. I initially presumed it to be the monument set by George B. Rader in 1902. A 1929 survey was found in MCSO records (RSID004898), by 2 engineers with unreadable signatures with license numbers 1644 and 1645, that shows an "old stone" at this corner. I then found a survey by Nelson L. Prall, dated 9-24-75 (RSID004898) that shows a stone symbol at this corner and other Section corners, and Mr. Prall notes in his legend that these stone symbols are stones set by him in 1949. A survey by Mr. Prall was also found in MCSO records from 1950 (RSID001263) that shows a stone symbol at this corner, though it does not note if it was set or found. The stone has been used on some surveys as the Township corner, though the post 9.6' west of it has also been used by at least 6 different surveyors, none of which note the stone, including Nelson L. Prall, in a 1984 survey in (RSID001144). It is peculiar that the stone is 9.6' east of the old fence corner and peculiar that Mr. Prall held the fence corner after holding a stone in his previous surveys. I believe it is possible, that the stone was once dug up in the vicinity of the fence corner and moved. For this reason and the fact, it was perpetuated by measurements in 1902, I believe it carries an uncertainty of ±10' as to being in its original 1811 location.

GEODETIC COORDINATES: *Northing: 1395503.7', Easting: 3097533.3'*

BASIS OF GEODETIC COORDINATES:

The basis of bearings is Grid North NAD83(2011), Indiana West Zone, Epoch 2010.0000, Geoid Model G2012BU7, Datum NAD83_NO_TRANS, US Survey Feet, derived from GPS observations utilizing the Indiana Real-Time Network (INCORS). Coordinate data was collected with a Javad Triumph LS Network Rover and/or with a Sokkia Set 510 Total Station radially from points located with GPS. Distances obtained with GPS have not been adjusted to ground. To adjust grid distances to ground distances multiply them by a scale factor of 1.000038587.

CERTIFICATIONS:



Michael E. Sheppard

Date: 7/16/2024
Michael E. Sheppard
State of Indiana
Professional Surveyor
No. 20100021



Trohn Enright-Randolph

Date: 7/16/2024
Trohn Enright-Randolph
Monroe County Surveyor



Accepted by the Monroe
County Surveyor Review
Board on 7/16/2024

Donna B. Smith



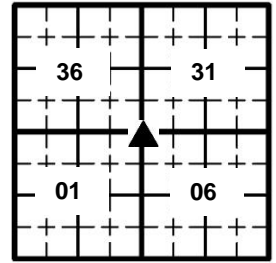
GEODETIC COORDINATE RECORD

Corner ID: **TwpCor_VI**

Township Corner

Sections 01-T07N-R02W, 06-T07N-R01W,
31-T08N-R01W & 36-T08N-R02W, 2nd P.M.

Indian Creek, Clear Creek, Perry & Van Buren Townships,
Monroe County, Indiana



MONUMENT: Describe monument set or found (Include material type, scribing, distance above/below grade, dimensions.)
Limestone with faint "+" found 1.0' above grade on the south side of east/west fence. Stone is 0.7' x 0.65'.

THEORY OF LOCATION: Describe the theory of location for acceptance of this monument. Include monument origin and associated uncertainty.
The stone was accepted as the corner with no associated uncertainty, as shown on Stephen Smith's 2011 Ketcham Boundary Survey recorded as Instrument Number 2011015309.

NOTES: Witnesses from the 2012 Monument Record were recovered by Rachel Oser in good condition on 11/03/2016.

GEODETIC COORDINATES: Northing: 1395503.7', Easting: 3097533.3'

BASIS OF GEODETIC COORDINATES: Coordinates shown hereon were obtained from GPS observations utilizing the Indiana Real-Time Network (INCORS). Indiana West Zone, NAD83(2011) Epoch 2010.0000, State Plane Grid Coordinates, US Survey Feet. Geoid model G2012BU7. Datum NAD83_NO_TRANS. Coordinate data was collected by Rachel Oser of the Monroe County Surveyor's Office on 11/03/2016 using a Topcon PG-A1 antenna and a Topcon GRS-1 data collector as noted in Field Book 48, page 37.

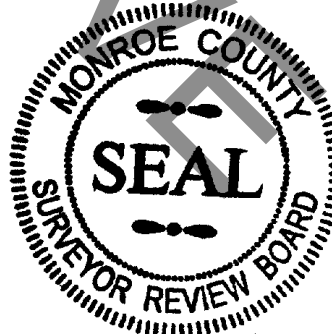
CERTIFICATIONS:



Rachel Oser
Date: 9/09/2019
Rachel Oser, State of Indiana
Professional Surveyor
No. 21100022



Trohn Enright-Randolph
Date: 09/12/2019
Trohn Enright-Randolph
Monroe County Surveyor



Accepted by the Monroe
County Surveyor Review
Board on Date: 09/10/2019



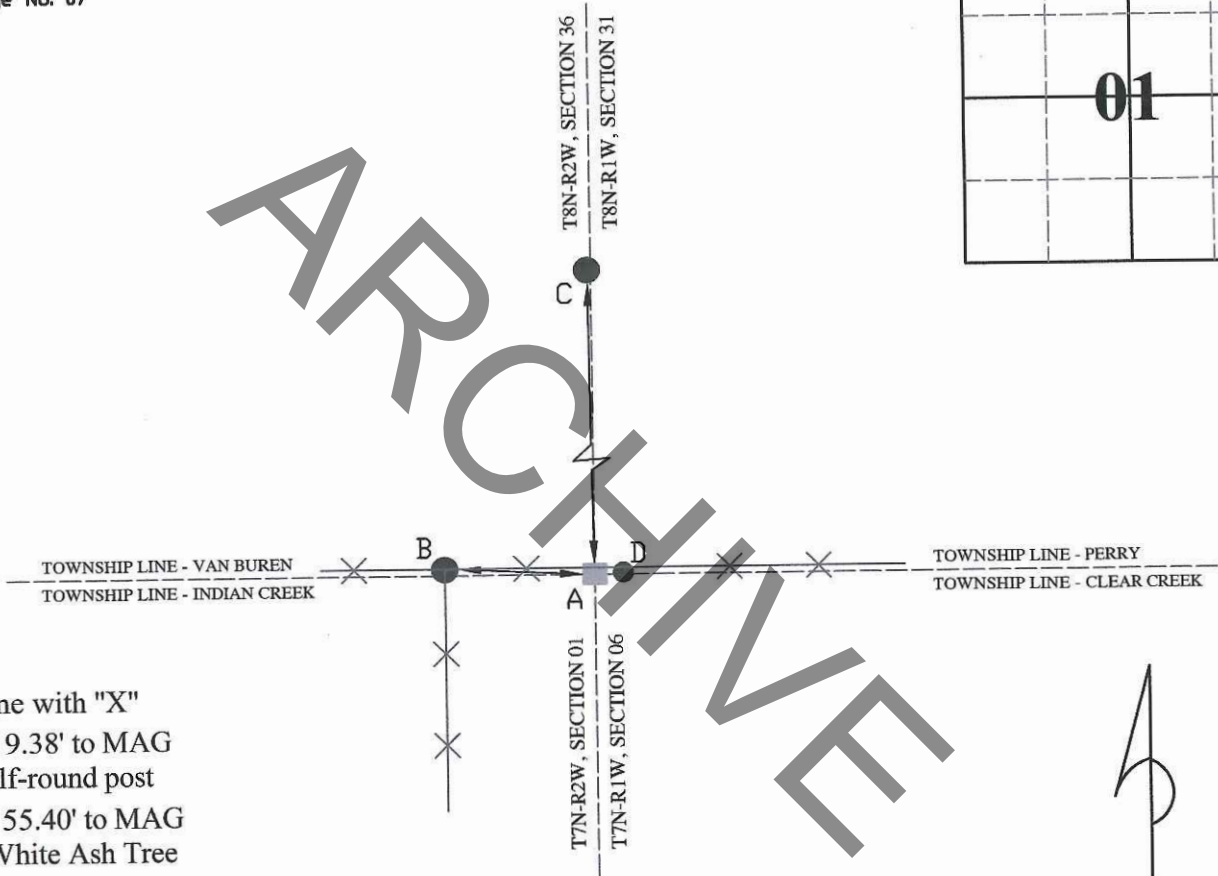
MONUMENT RECORD
State of Indiana - County of Monroe

Section: 01 **Township:** 7 North **Range:** 2 West **Corner ID:** Twp Co VI

Monument Description & Remarks: Limestone with faint "X", length 0.70ft, width 0.65ft, height 1.00ft. Survey Sign 5ft above ground at pt. D

References On File: Legal Survey book 2 page 343, MCS M. H. Buskirk (1881) and Legal Survey book 2 page 581-582, MCS George B. Rader (1902), on file in Surveyor Office. Stephen L. Smith survey, Ketcham Boundary (2011), on file in Recorder Office cabinet S2 envelope 49

RECOVERY TIE DRAWING
Field Book 46 Page No. 07



- A - Limestone with "X"
- B - S 89° W 9.38' to MAG nail in 6" half-round post
- C - N 03° E 55.40' to MAG nail in 40" White Ash Tree
- D - S 86° E 2.60' to Survey Sign on 4" Sassafras Tree

Not To Scale
Compass Bearing Magnetic North

I, Kevin P. Enright, Monroe County Surveyor, hereby certify that this document was prepared under my direction in accordance with the provisions of section 36-2-12-11 of the Indiana Code; and the above data is given under my hand and seal this 30th day of December, 2011

Kevin P. Enright



Administered by the Monroe County Surveyor Review Board

Date: 1-10-2012

- NOTES:**
- Field work was performed in January thru May, 2024.
 - This document is not complete without the associated report of survey.
 - Interior quarter-section corners, sixteenth-section corners and corners of minor subdivisions were not evaluated in any way unless shown hereon or specifically discussed in the report of survey. Bearing breaks may exist between section corners and quarter corners that are not shown. Bearings and distances are shown hereon to correlate corners and to assist in corner analysis.
 - Basis of Bearings: Unless noted otherwise, the basis of bearings is Grid North NAD83(2011), Indiana West Zone, Epoch 2010.0000, Geoid Model G2012BU7, Datum NAD83_NO_TRANS, US Survey Feet, derived from GPS observations utilizing the Indiana Real-Time Network (INCORS). Coordinate data was collected with a Javad Triumph LS Network Rover and/or with a Sokkia Set 510 Total Station radially from points located with GPS. Distances obtained with GPS have not been adjusted to ground. To adjust grid distances to ground distances multiply them by a scale factor of 1) 1.00041208.

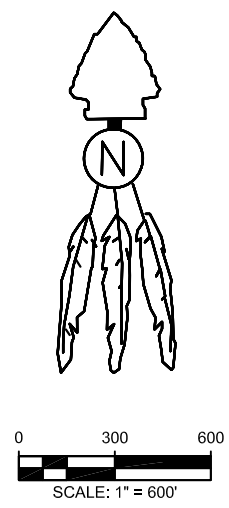
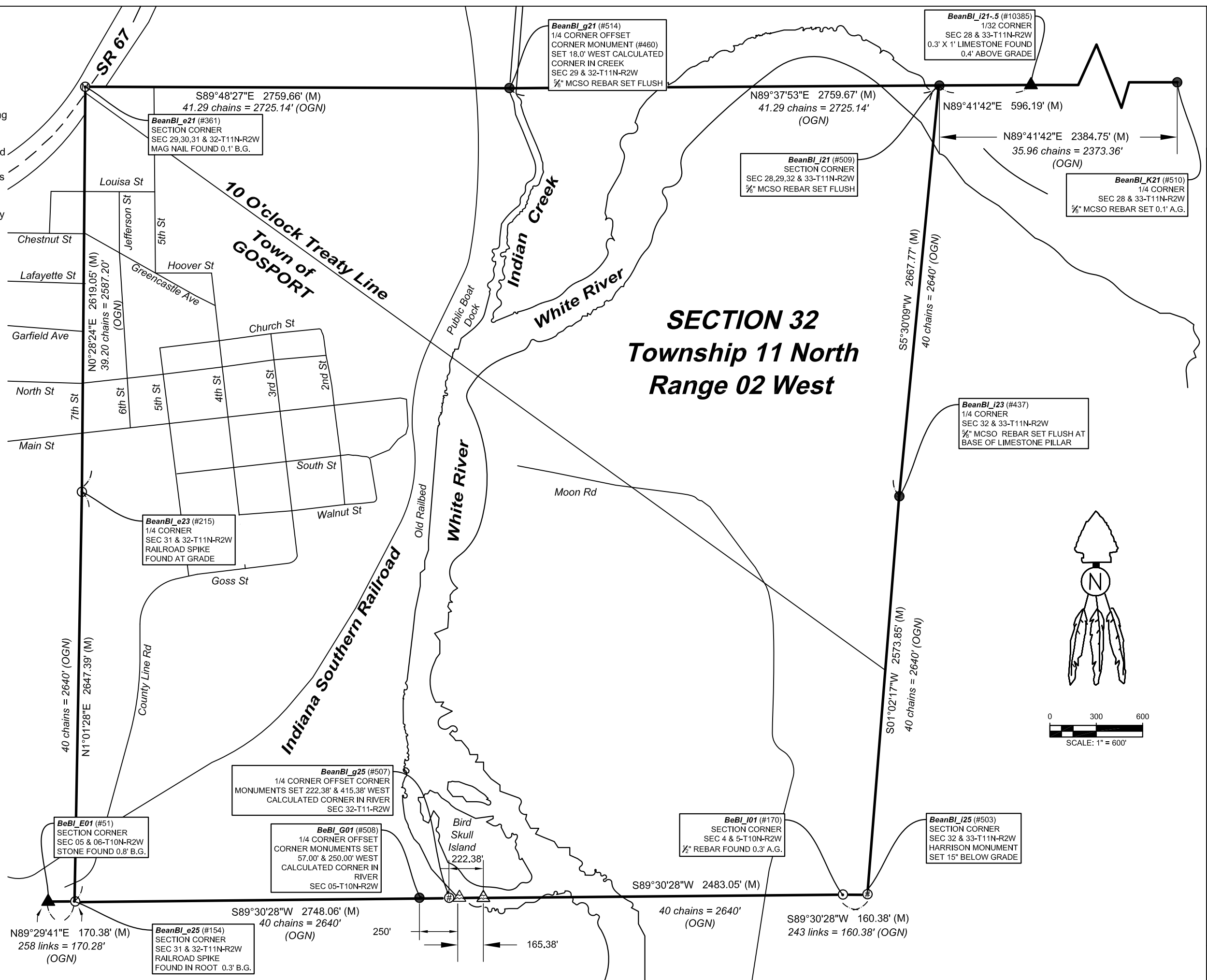
CERTIFICATION:
I hereby certify that this survey was performed either by me or under my direction. To the best of my knowledge and belief, this survey was executed according to survey requirements in Title 865, Rule 12 of the Indiana Administrative Code.

Certified This July 16, 2024

Michael E. Sheppard
Professional Surveyor
No. 20100021
State of Indiana
msheppard@co.monroe.in.us



- LEGEND:**
- (M) Measured Distance
 - (R-1884) Record Distance
 - (OGN) Original Government Notes
 - (C) Calculated Distance
 - (CR) Calculated from Record
 - BeBl_E01** Corner Reference ID (#283)
 - A.G. Above grade
 - B.G. Below grade
 - ⊕ Harrison Monument
 - Iron Monument Found
 - Iron Monument Set
 - ⊙ Iron Pipe Found
 - ⊠ Mag Nail / Mag Spike
 - ⊡ Post Found
 - ⊞ Stone Found
 - ⊞ Calculated Corner
 - Line not to scale



I affirm, under the penalties for perjury, that I have taken reasonable care to redact each Social Security Number in this document, unless required by law. *Michael E. Sheppard*

OFFICE OF THE MONROE COUNTY SURVEYOR
Trohn Enright-Randolph
501 N Morton Street Ste 205, Bloomington, IN 47404
(812) 349-2570

Project: 2024-001
Field work by: MES & JMG
Drawn by: JMG
Reviewed by: MES, TER & SRB

CORNER PERPETUATION
SECTION 32- T11N - R02W
Bean Blossom Township Monroe County, Indiana
Wayne Township Owen County, Indiana

SHEET 1 OF ???
File path: N:\Monument_Records\T11N_R02W_BeanBlossom\00_S-T-R32-T11N-R02W\Draw\32-T11N-R02W\3D_PerpetuationSurvey.dwg
Saved on: Jul 9, 2024
Plotted on: Jul 9, 2024

REPORT OF SURVEY:

In accordance with Title 865, Article 1, Chapter 12 of the Indiana Administrative Code, the following observations and opinions are submitted regarding the various uncertainties in the locations of the corners established by this survey as a result of availability and condition of reference monuments, occupation or possession lines, and clarity or ambiguity of the record descriptions and plats. There may be unwritten rights associated with these uncertainties. Any uncertainty associated with the corners shown hereon is inherently passed to any parcel corner dependent on its position. The Relative Positional Accuracy in the location of points shown on this survey is within that allowable for a rural survey (0.26 feet + 200 ppm) as defined by Title 865, Rule 12 of the Indiana Administrative Code.

The purpose of this survey is to perpetuate the section/half section corners in Section 32-T11N-R02W, 2nd Principal Meridian, Wayne Township Owen County and Bean Blossom Township, Monroe County, Indiana. Interior quarter-section corners, sixteenth-section corners, and corners of minor subdivisions were not evaluated in any way unless specifically discussed herein. The relationship of the section/half section corners to the adjoining parcel boundary lines was not addressed. Occupation lines in the immediate vicinity of the monuments found or set are shown on the associated Monument Records on file in the Office of the Monroe County Surveyor.


Reference survey records were obtained from the Monroe County Surveyor, Monroe County Recorder, Monroe County Auditor, Monroe County Planning, Monroe County Highway Department, and the U.S. Army Corps of Engineers. Surveys consulted are included in the history section pertaining to each monument. Reference Survey ID numbers refer to the Monroe County Surveyor's Reference Survey Database and Instrument numbers refer to the Monroe County Recorder's Database, unless noted otherwise.

MONUMENTS FOUND OR SET:

Monuments and corners discovered, analyzed, evaluated and used in the process of this survey, the theory of location used to accept or establish these monuments and corners, and this surveyor's opinion of the uncertainties associated with these monuments and corners are discussed in the theory of location section of the following corner tie sheets and the following corner theory of locations:


Northeast corner Section 32 Township 11 North Range 2 West (BeanBI_i21): (#509) Set 5/8" diameter rebar (24" long), with 2" diameter aluminum cap inscribed MONROE COUNTY SURVEYORS OFFICE SHEPPARD PLS#20100021, flush with ground, in a wooded area between the North top of bank of white river and the South edge of a crop field. The rebar was set on the extension of a line from a rebar set at the North Quarter corner of S33-11N-2W through a stone found at the (apparent) historically used and accepted location of the Southeast corner of the West Half of the West Half of the Southwest Quarter of the Southwest Quarter of Section 28-11N-2W, also known as the Northeast corner of the West Half of the Northwest Quarter of the Northwest Quarter of Section 33-11N-2W, and at a distance dividing said Quarter Quarter Sections into equal parts. For additional information on this corner see the monument record card for BeanBI_i21 in the Monroe County Surveyors Office and attached to Section 33 Township 11 North Range 2 West Corner Perpetuation Survey dated June 18, 2024.

East Quarter Corner Section 32 Township 11 North Range 2 West (BeanBI_i23) (#437): Set 5/8" diameter rebar with (24" long), with 2" diameter aluminum cap inscribed MONROE COUNTY SURVEYORS OFFICE SHEPPARD PLS#20100021, set flush with ground, at the Southeast base of a severely leaning engraved stone pillar. Rebar was set at the location of the stone pillar prior to being leaned over, based on the location of a found reference stone. The rebar was set at the Southeast base of a leaning 9" north-south by 8" east-west limestone pillar found with a cross on top of it, 0.5' above ground, at the calculated location of where the top of the stone had been before being leaned over, based on the record dimension from a found reference stone. In looking at the stone pillar, it is evident that it would occupy this location if it were standing vertical in the ground. We dug down around the pillar over 3' and never found its bottom and determined, due to its size and weight we were not going to be able to straighten it up. The found stone appears to either be the stone or at the location of the stone set by C M Bowers, Monroe County Surveyor on 05/22/1907, via legal survey book 3, page 27. Being that the stone is over 100' West of a straight line between the Southeast and Northeast corners of Section 32/Southwest and Northwest corners of Section 33, I have serious reservations that this stone is where the original post was set in 1819 to mark this corner, however upon finding the witness stone, I believe there is negligible uncertainty that the rebar set this survey is where said Monroe County Surveyor C M Bowers established the corner in 1907. I hypothesis that Mr. Bower did not know the location of the Section corner to the North when he established this corner. In said legal survey book 3, page 27, Mr. Bowers notes establishing the center of Section from the South 1/2 mile corner 156 rods and 18 links "N", then establishing this corner 144 rods and 7 links "W" of said center of Section. Although this wouldn't be the correct procedure set forth by the Bureau of Land Management to reestablish this corner, that is how he did it in 1907 and this is the location that has been historically used and accepted since that time. For additional information on this corner see the monument record card for BeanBI_i21 in the Monroe County Surveyors Office and attached to Section 33 Township 11 North Range 2 West Corner Perpetuation Survey dated June 18, 2024.

SHEET 2 OF 22	CORNER PERPETUATION SURVEY SECTION 32 – T11N - R02W Wayne Township Owen County and Bean Blossom Township	Project: 2024-001 Section 32 Field work by: Michael E. Sheppard and Jason M. George Drawn by: JMG Reviewed by: MES, SRB & TER		OFFICE OF THE MONROE COUNTY SURVEYOR Trohn Enright-Randolph <i>Monroe County Surveyor</i> Morton Street Ste 205, Bloomington, IN surveyoroffice@co.monroe.in.us
------------------------	---	---	---	--

Southeast Corner Section 32 Township 11 North Range 2 West (BeanBl_i25): Harrison monument (#503) inscribed Section Corner, set 15" below ground, in a crop field. The Harrison monument (#503) was set at the extension of a line beginning at a railroad spike in a tree root at the Southwest corner of Section 32, Township 11 North Range 2 West (BeanBl_e25), through a 1/2" diameter rebar found at the Northeast corner of Section 5/Northwest corner of Section 4, Township 10 North Range 2 West (BeBl_I01) and at record distance of 243 Links ($\pm 160.38'$) from the rebar at BeBl_I01. Uncertainties associated with this corner would be relative to the rebar found at said BeBl_I01. The theory of location discussion relative to the 1/2" rebar at BeBl_I01, on it's reference tie sheet is herein reprinted as follows: The first survey of modern origin, I uncovered that showed a rebar (or any monument for that matter after the original wood post), is a survey by Edmund O. Farkas dated November 21, 1979, found in the Monroe County Surveyors Office data base as RSID004160. It is not clear from a review of said survey if he set or found the rebar in 1979. I personally visited the site and found the 1/2" diameter rebar on 5-24-2004, while doing a Section corner reestablishment survey for the Owen County surveyors office. At that time, I noted the rebar to be at the North edge of the evident cut of an old, abandoned, east-west road bed (not as visible today as 20 years ago). On my 2004 visit to the site, I noted that the adjoining landowner, appx. 65-year-old Patricia Powell walked us to an area she said her father had always told her the Sections cornered, which was approximately 20.5' South of the rebar. The vicinity she showed us was in the approximate South edge of the apparent cut of the old, abandoned roadway and I observed a 1.1' by 1.3' by 0.3' thick stone lying flat, 0.3' below ground, in a north-south fence line. It appears this is the stone cited in a survey by Jess A Gwinn PLS as found disturbed and reset. The stone was then referenced by Kevin P. Enright, Monroe County Surveyor, on March 14, 2006 and entered into Monroe County Surveyors Office corner records. I revisited the sight in 2006, while doing a survey dated June 7, 2006, recorded in instrument #2006013767. My helper at the time, (Carl Wigal) who had extensive background in building houses, said it looked like a "foundation stone" to him. I observed groves on the stone supporting his idea that it had at 1 time possibly had steel in and or against it and questioned its validity as a 1800's survey corner stone. In 2014, a survey was conducted by BRG surveying, under the direction of Rachel Oser PLS and in said survey, dated August 8, 2014, and recorded in instrument #2016011069, Mrs. Oser noted that the rebar matched deeds and occupation lines in the area, and accepted the rebar over the stone. For additional information on this corner see the monument record card for BeanBl_i21 in the Monroe County Surveyors Office and attached to Section 33 Township 11 North Range 2 West Corner Perpetuation Survey dated June 18, 2024.

Northeast Corner Section 6/Northwest Corner Section 5 Township 10 North Range 2 West (BeBl_E01): 1' north-south by 0.2' east-west limestone found with top 0.8' below ground, in a mowed yard. Stone had a groove across its top that we ground into a cross, which is 0.3' east of a 5/8" rebar found angling across the stones southwest side. Stone is at the east edge of the drip line of a large pine tree. Found, stone has been used by myself in prior surveys and by others, based on the stone's location relative to other old monuments and occupation lines in the area, it is, in my opinion, the most reliable evidence of the originally established location of the Northeast corner of Section 6/Northwest corner Section 5, with negligible uncertainty. For additional information on this corner see the monument record card for BeBl_E01 in the Monroe County Surveyors Office and attached to Section 6 Township 10 North Range 2 West Corner Perpetuation Survey dated April 16, 2024.

SHEET 3 OF 22	CORNER PERPETUATION SURVEY SECTION 32 – T11N - R02W Wayne Township Owen County and Bean Blossom Township	Project: 2024-001 Section 32 Field work by: Michael E. Sheppard and Jason M. George Drawn by: JMG Reviewed by: MES, SRB & TER		OFFICE OF THE MONROE COUNTY SURVEYOR Trohn Enright-Randolph <i>Monroe County Surveyor</i> Morton Street Ste 205, Bloomington, IN surveyoroffice@co.monroe.in.us
--------------------------------------	---	---	---	--

MONUMENT RECORD

Corner ID: **BeanBI_e21**

Section Corner

Sections 29, 30, 31 & 32- T10N-R02W, 2nd P.M.

Wayne Township Owen County Indiana.

Though this corner is in Owen County, it is shown, in places as
Bean Blossom Township, Monroe County, Indiana

Section 30 T11N-R02W	Section 29 T11N-R02W
Section 31 T11N-R02W	Section 32 T11N-R02W

MONUMENT: Describe monument set or found (Include material type, scribing, distance above/below grade, dimensions.)
 (#361) Mag nail in unreadable washer found 0.1' below asphalt, 3' Southwest of the center of State Highway 67, approximately in the extended center of north and south asphalt county roads.

MONUMENT LOCATION SKETCH:

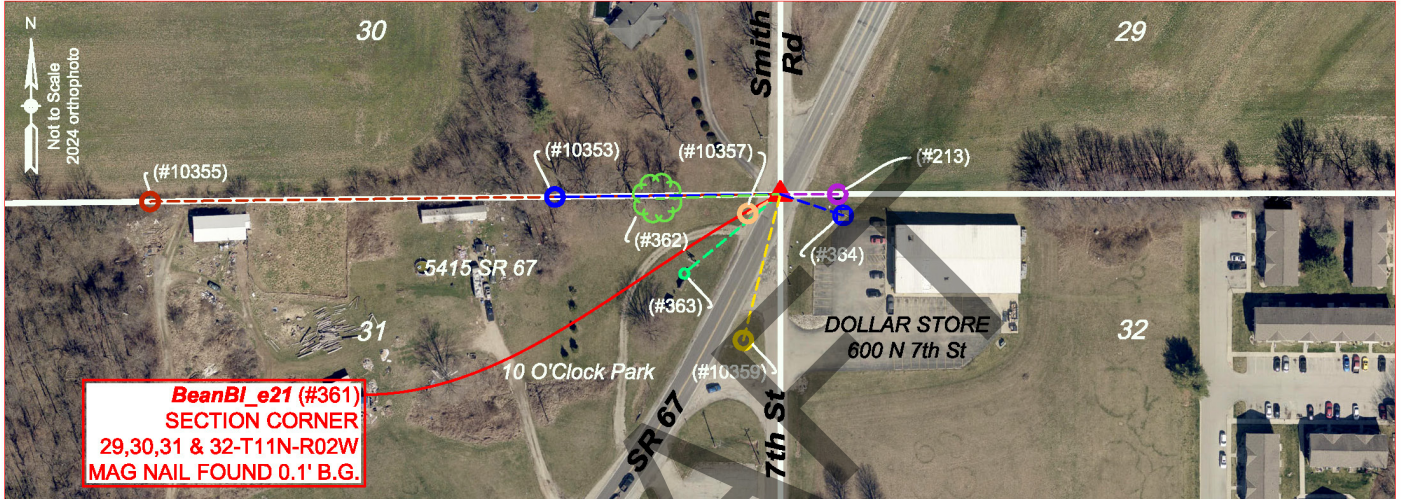


PHOTO IDENTIFIED: Photo Date: 3/06/2024



Photo Orientation & Description: From West looking East



Photo Orientation & Description: From East looking West

EXISTING SURVEY HISTORY Include as much detail and history of the corner as known at the time of perpetuation

ORIGINAL GOVERNMENT SURVEY:

Year Surveyed: 1819 By: Thos Brown Deputy Surveyor
 Where filed or recorded: Original notes (Owen County) Page 11
 Original monument: Post
 Bearing Trees or Reference Monuments:

Species	Dia.	Bearing	Distance
Beech	14"	N61°E	24 Links
Sugar	12"	N47°W	22 Links

Notes:

SUBSEQUENT CORNER RESTORATION:

Though I found no restoration or references to this corner between 1819 and 1987, I did find in Owen County Survey Book 1, page 28, where on March 13, 1850, Owen County Surveyor JW Getty set a stone 999 links east of it and on March 18, 1867, in Owen County Survey Book 2, page 168, a Owen County Surveyor with unreadable signature set stones East and South of it.



OFFICE OF THE MONROE COUNTY SURVEYOR • Trohn Enright-Randolph

501 N Morton Street Ste 205, Bloomington, IN 47404 • 812-349-2570 • surveyorsoffice@co.monroe.in.us

MONUMENT RECORD

Corner ID: **BeanBI_e21**

Section Corner

Sections 29, 30, 31 & 32- T10N-R02W, 2nd P.M.

Wayne Township Owen County Indiana.

Though this corner is in Owen County, it is shown, in places as
Bean Blossom Township, Monroe County, Indiana

Section 30 T11N-R02W	Section 29 T11N-R02W
Section 31 T11N-R02W	Section 32 T11N-R02W

SUBSEQUENT CORNER RESTORATION:

Date Surveyed: 12/07/1987 By: Perry Poff and William Harlos

Where filed or recorded: Owen County Mapper Office

Original monument: p.k. nail

Bearing Trees or Reference Monuments:

Species	Dia.	Bearing	Distance
Maple	24"	Not given	40.1'
Maple	12"	Not given	94.8'
Highway Marker		Not given	80.0'

Notes: I believe the mag nail located this survey is where said pk nail had been within an uncertainty of 0.1'

WITNESS MONUMENT TIES: Describe at least three new BT's (Bearing Trees) and/or witness objects established, or work done to preserve existing evidence. BT diameters are noted as dbh (diameter at breast height) and are measured approximately 4.5' above ground. Bearings and Distances are measured from the monument to the center of the BT. Bearings and Distances to witness ties were measured with a Sokkia Set 510 Total Station.

ID	Bearing	Distance	Description
(#362)	S87°54'W	129.9'	26" diameter sugar maple tree
(#364)	S71°26'E	69.5'	center of Dollar General Store sign post
(#363)	S50d35'W	124.5'	Center of degree circle on 10 o'clock line concrete monument

MONUMENT ACCESSORIES

Other survey grade monuments that were located in the vicinity and their relation to the monument. Witnesses noted as a Rebar Lite are a 5/8" diameter by 16" polycarbonate rod with a 1-1/2" mag nail in top and yellow plastic cap stamped "MONROE COUNTY WITNESS POINT" set 0.1 foot below grade unless otherwise noted.

Geodetic coordinates in this table are provided in the format Northing, Easting.

(#213)	S89° 56' 35"E	60.23'	N:1496074.3378' E:3070462.2476' 3/4" diameter rebar found 0.4' B.G.
(#10357)	S59° 25' 19"W	39.44'	N: 1496054.334' E: 3070368.0654' Rebar Lite
(#10359)	S14° 12' 03"W	157.73'	N:1495921.4911' E:3070363.3272' Rebar Lite in grass island between roads
(#10353)	S89° 19' 28"W	236.22'	N:1496071.6125' E:3070165.8148' 5/8" rebar found 0.3' B.G., 6' North of old east-west fence line
(#10355)	S89° 20' 24"W	660.42'	N:1496066.7912' E:3069741.6495' 5/8" rebar found 0.4' B.G. 1' North of old east-west fence line



OFFICE OF THE MONROE COUNTY SURVEYOR • Trohn Enright-Randolph

501 N Morton Street Ste 205, Bloomington, IN 47404 • 812-349-2570 • surveyoroffice@co.monroe.in.us

MONUMENT RECORD

Corner ID: **BeanBI_e21**

Section Corner

Sections 29, 30, 31 & 32- T10N-R02W, 2nd P.M.

Wayne Township Owen County Indiana.

Though this corner is in Owen County, it is shown, in places as
Bean Blossom Township, Monroe County, Indiana

Section 30 T11N-R02W	Section 29 T11N-R02W
Section 31 T11N-R02W	Section 32 T11N-R02W

OTHER SURVEY HISTORY: *Include details such as surveyor name, date, recording info, monument description, etc.*

Date	RSID	Surveyor	Description	Recorder's Office	File Location
6/7/1990	RSID005388	Harlos, William D.	Erskine Hoadley Estate		
3/6/2007	RSID005390	Resenbeck, Brian	Plat of Survey (Dollar General Store)		
7/26/2015	RSID005385	Meier, David R.	Gospport Boat Ramp		209272.IN
3/30/2022	RSID005382	Graham, Charles D	Retracement Survey 27 South Seventh Street, Gosport, IN 47433	Recorder's Office	228778.IN
	RSID005391	Sid Bennett			80759.IN
12/7/1987	RSID005387	William Harlos	BeBl_E21 Owen County Tie Sheet PK Nail		
10/21/1999	RSID005389	Helton, David C.	LinChris Property		
1/8/2018	RSID005386	Meier, David R.	Gospport Liquor Store Retracement Survey		219463

ORIGINAL OR SUBSEQUENT SURVEY EVIDENCE FOUND: *Include, search area or areas, search procedure, etc.*

Date of Field work/Search: 01/11/2024 & 03/06/2024 *By:* Michael E Sheppard, Jason George *Monument Found:* Mag nail *BTs or Reference Objects Found:* New references established (see Theory of Location) *Project #:* 24-001 *Field Book:* 55, pg.62 and Field Book 56, pages 15&16.

OTHER EVIDENCE: *Describe corner location relative to nearby features and how to reach the corner location – note fences, roads, timber cutting lines, mow lines, clearings, plantings, streams, topo changes, etc.*

Mag nail appears to be in general harmony with the extended center of north and south asphalt county roads and east and west tree lines. Mag nail is approximately 3' Southwest of the center of State Highway 67, near the Dollar General store in Gosport Indiana.

MONUMENT PRESERVATION: *Describe work done to preserve existing monument.*

Mag nail was uncovered and painted. 2 rebar lite monuments were set and 4 existing (found) rebars were located, that can be used to reestablish the Mag nail's location, should it be destroyed or paved over in road construction.

THEORY OF LOCATION: *Describe the theory of location for acceptance of this monument. Include monument origin and associated uncertainty.*

The mag nail was set in a survey by Brian Resenbeck PLS, for A to B surveying, dated 03/06/2007. Said survey was found in the Owen County mappers office and is Monroe County Surveyors document #RSID005390. In his report, Mr. Resenbeck cites a survey by Kevin Potter noting a PK nail at the Section corner and setting his Mag nail "from record dimensions per the Potter survey". Though the exact history behind the location of the PK nail that Mr. Resenbeck's Mag nail purports to replace is not known, we did find an Owen County corner record sheet for a PK nail marking this corner by William Harlos, Owen County Surveyor, dated 12/07/1987. The sheet cites the origin of the PK nail as set. 3 references on the sheet were not found this survey. Also found in our search in the mapper's office records was a survey by Sid Bennett PLS, recorded in instrument #80759, that showed a rebar on the North line of Section 31, 236.26' from a PK nail at the Section corner and another rebar 424' West of the first one, also on the Section line. A survey by C. David Helton dated October 21, 1999, was also found showing the same 2 rebars shown on the Bennett survey as being on the Section line and the Pk nail being at the extension of the rebars and 236.26' from the Eastern most rebar. We located both rebars and found the found Mag nail to be within 0.1' of the extension of the rebars and 236.26' from the Eastern most one, thus it appears the Mag nail is at or at least very close to the location of the former PK nail. Without a clear chain of history on this monument, there is undoubtedly some uncertainty that this is the original location of the Section corner. I pulled and reviewed highway plans for State Road 67 and they noted an "approximate Section corner" and "no stone found", thus were of little help. Due to the above factors, the Mag nail is in my opinion the most reliable evidence of the original location of the Section corner with an estimated uncertainty of 3'.



OFFICE OF THE MONROE COUNTY SURVEYOR • Trohn Enright-Randolph

501 N Morton Street Ste 205, Bloomington, IN 47404 • 812-349-2570 • surveyorsoffice@co.monroe.in.us

MONUMENT RECORD

Corner ID: **BeanBI_e21**

Section Corner

Sections 29, 30, 31 & 32- T10N-R02W, 2nd P.M.

Wayne Township Owen County Indiana.

Though this corner is in Owen County, it is shown, in places as
Bean Blossom Township, Monroe County, Indiana

Section 30 T11N-R02W	Section 29 T11N-R02W
Section 31 T11N-R02W	Section 32 T11N-R02W

GEODETIC COORDINATES: *Northing: 1496074.4', Easting: 3070402.0'*

BASIS OF GEODETIC COORDINATES:

The basis of bearings is Grid North NAD83(2011), Indiana West Zone, Epoch 2010.0000, Geoid Model G2012BU7, Datum NAD83_NO_TRANS, US Survey Feet, derived from GPS observations utilizing the Indiana Real-Time Network (INCORS). Coordinate data was collected with a Javad Triumph LS Network Rover and/or with a Sokkia Set 510 Total Station radially from points located with GPS. Distances obtained with GPS have not been adjusted to ground. To adjust grid distances to ground distances multiply them by a scale factor of 1.000041208.

This document is not complete without the associated Corner Perpetuation plat and report of survey for Section 32 Township 11 North Range 2 West by Michael E. Sheppard of the Monroe County Surveyor's Office dated 7/16/2024.

CERTIFICATIONS:



Michael E. Sheppard

Date: 7/16/2024
Michael E. Sheppard
State of Indiana
Professional Surveyor
No. 20100021



Trohn Enright-Randolph

Date: 7/16/2024
Trohn Enright-Randolph
Monroe County Surveyor



Accepted by the Monroe
County Surveyor Review
Board on 7/16/2024

Donna Babich



MONUMENT RECORD

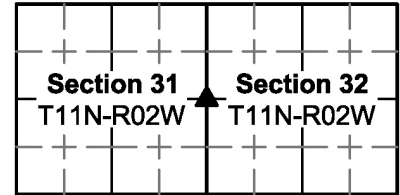
Corner ID: **BeanBI_e23**

Quarter Corner

Sections 31 & 32- T11N-R02W, 2nd P.M.

Wayne Township, Owen County, Indiana

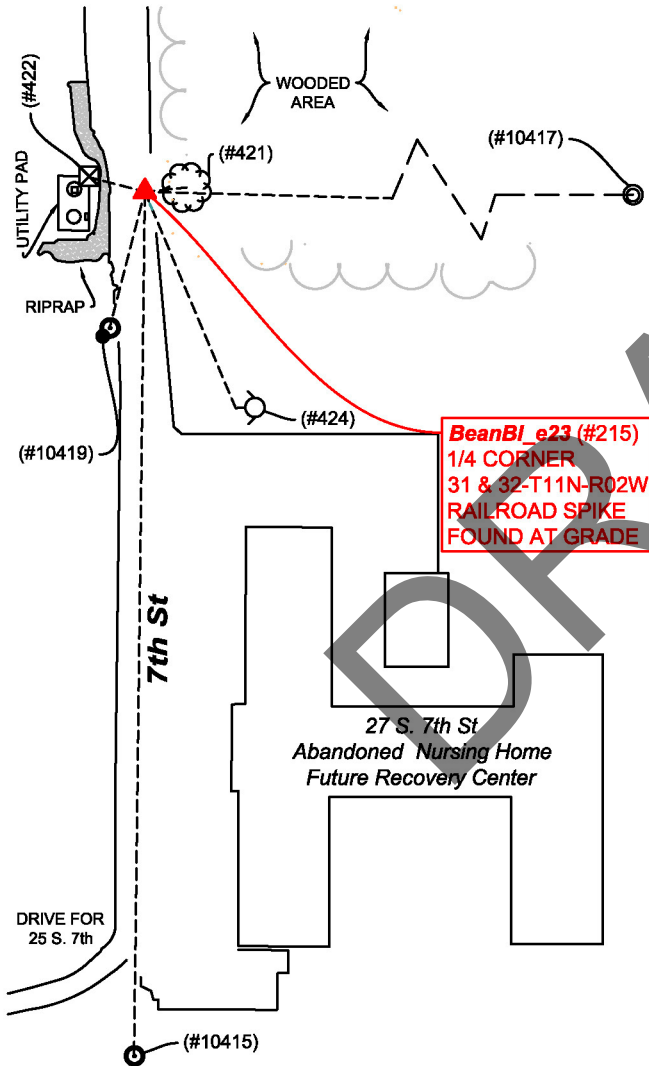
Though this corner is in Owen County, it is,
in places, noted as Bean Blossom Township, Monroe County, Indiana



MONUMENT: Describe monument set or found (Include material type, scribing, distance above/below grade, dimensions.)

Railroad Spike found flush with and 6' East of the center of a north-south asphalt road, known as 7th Street in Gosport Indiana, at the extension of an old East bound fence line.

MONUMENT LOCATION SKETCH:



OFFICE OF THE MONROE COUNTY SURVEYOR • Trohn Enright-Randolph

501 N Morton Street Ste 205, Bloomington, IN 47404 • 812-349-2570 • surveyorsoffice@co.monroe.in.us

MONUMENT RECORD

Corner ID: **BeanBI_e23**

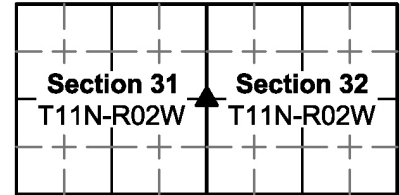
Quarter Corner

Sections 31 & 32- T11N-R02W, 2nd P.M.

Wayne Township, Owen County, Indiana

Though this corner is in Owen County, it is,

in places, noted as Bean Blossom Township, Monroe County, Indiana



WITNESS MONUMENT TIES: Describe at least three new BT's (Bearing Trees) and/or witness objects established or work done to preserve existing evidence. BT diameters are noted as dbh (diameter at breast height) and are measured approximately 4.5' above ground. Bearings and Distances are measured from the monument to the center of the BT. Bearings and Distances to witness ties were measured with a Sokkia Set 510 Total Station.

ID	Bearing	Distance	Description
(#421)	N80° 43'E	12.4'	14" Hackberry tree
(#422)	N75° 28'W	29.6'	Power pole with tag #BRG2022
(#424)	S22° 47'E	122.0'	Cut X on West flange of fire hydrant

MONUMENT ACCESSORIES

Other survey grade monuments that were located in the vicinity and their relation to the monument. Witnesses noted as a Rebar Lite are a 5/8" diameter by 16" polycarbonate rod with a 1-1/2" mag nail in top and yellow plastic cap stamped "MONROE COUNTY WITNESS POINT" set 0.1 foot below grade unless otherwise noted.

Geodetic coordinates in this table are provided in the format Northing, Easting

(#10417)	S88° 45' 47"E	639.78'	N: 1493441.6238' E:1493441.6238 ' Iron pipe with remnants of Dorman cap found flush with ground, at the beginning of an old west bound fence line, 18' west of the physical center of 5 th street
(#10415)	S00° 42' 50" W	449.65'	N: 1493005.8210' E: 3070374.7841' Railroad Spike found 0.4' below ground at beginning of South fence
(#10419)	S14° 28' 54" W	72.85'	N: 1493384.8964' E: 3070362.1665' Rebar Lite 4' West of west edge of pavement of 7 th street
(#422)	N75° 28' 05" W	29.62'	N:1493462.8682' E:3070351.7090' Cross ground in concrete pad near its Northeast corner

PHOTO IDENTIFIED: Photo Date: 04/18/2024



Photo Orientation & Description: From above



Photo Orientation & Description: From West looking East



OFFICE OF THE MONROE COUNTY SURVEYOR • Trohn Enright-Randolph

501 N Morton Street Ste 205, Bloomington, IN 47404 • 812-349-2570 • surveyorsoffice@co.monroe.in.us

MONUMENT RECORD

Corner ID: **BeanBI_e23**

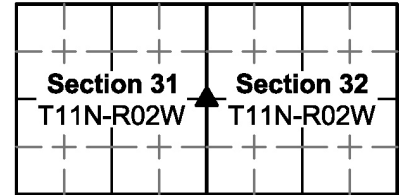
Quarter Corner

Sections 31 & 32- T11N-R02W, 2nd P.M.

Wayne Township, Owen County, Indiana

Though this corner is in Owen County, it is,

in places, noted as Bean Blossom Township, Monroe County, Indiana



EXISTING SURVEY HISTORY *Include as much detail and history of the corner as known at the time of perpetuation*

ORIGINAL GOVERNMENT SURVEY:

Year Surveyed: 1819 By: William Harris Deputy Surveyor
 Where filed or recorded: Owen County Original notes, page 11.
 Original monument: Post
 Bearing Trees or Reference Monuments:

Species	Dia.	Bearing	Distance
Hackberry	12"	S21°W	7 Links
Beech	9"	N6°E	10 Links

Notes:

SUBSEQUENT CORNER RESTORATION:

Date Surveyed: April 1870 By: Jas King Owen County Surveyor
 Where filed or recorded: Owen County Survey Book 2, page 361
 Original monument: Stone marked ¼ S
 Bearing Trees or Reference Monuments:

Species	Dia.	Bearing	Distance
None Given		°	
		°	

Notes: Mr. King did not note if the stone was set or found, but he used it to establish property corner stones to its East and South.

OTHER SURVEY HISTORY: *Include details such as surveyor name, date, recording info, monument description, etc.*

DocumentDate	SurveyID	Surveyor	Description	InstrumentNo
2/9/1959	RSID005440	Dorman, Henry J.	Dorman Boundary survey in Gosport	
12/13/1967	RSID005439	Dorman, Henry J.	Dorman 3.93 acre survey in Gosport	
4/12/1985	RSID005381	Farkas, Edmund O.	TRI CO Surveying & Mapping Survey	
8/1/1997	RSID005383	Bledsoe Tapp Riggert	Job #2163 Boundary survey in Nw 1/4 32-11-2W Owner: June Burns Deed Record: 140, pgs. 2019-210	119375.IN
7/26/2015	RSID005385	Meier, David R.	Gosport Boat Ramp	209272.IN

ORIGINAL OR SUBSEQUENT SURVEY EVIDENCE FOUND BY THE MONROE COUNTY SURVEYORS OFFICE: *Include, search area or areas, search procedure, etc.*

Date of Field work/Search: 1/11/24 & 4/18/2024 By: MES/JMG Monument Found: Railroad Spike BTs or Reference Objects Found:
 References were made Project #: 24-001 Field Book: 55 page 62 & Field Book 56 pages 28&29 Notes:

OTHER EVIDENCE: *Describe corner location relative to nearby features and how to reach the corner location – note fences, roads, timber cutting lines, mow lines, clearings, plantings, streams, topo changes, etc.*

Railroad Spike is in, flush with and 6' East of the physical center the asphalt surface of 7th street in the town of Gosport Indiana, at the extension of an old east bound fence line.

MONUMENT PRESERVATION: *Describe work done to preserve existing monument.*

The railroad spike was GPS located and referenced made to several stable objects.

THEORY OF LOCATION: *Describe the theory of location for acceptance of this monument. Include monument origin and associated uncertainty.*

The Railroad spike was set by Bledsoe Tapp & Riggert, Inc (herein after referred to as BTR) Surveying company, in a 1997 survey recorded in Misc, Record Book #139, page 325 in the Owen County Recorder's Office. The report associated with this survey indicates it was set at the extension of the old East bound fence line, shown on old Dorman surveys as being on and along the ½ Section line, with said fence lines intersection with a pipe and a railroad spike shown on a 1985 survey by Edmund Farkas (RSID005381). It would appear that they did not realize that the description Mr. Farkas wrote in said survey cited the pipe as being "3 feet west of section line", however it also doesn't appear they realized the Easting location of the railroad spike they set was within 0.2' of being at the record distance of 640' from a Dorman capped iron pipe that appears to have been set in a 1959 Survey by Henry Dorman (RSID005440). It is noteworthy that said Farkas survey notes the Quarter Section corner as being 437.58' North of a railroad spike found at the extension of and near the beginning of an old South bound fence line. In the BTR survey and in this survey, the distance was measured as 449.65' South of the railroad spike set by BTR, leaving the question why Mr. Farkas believed the Quarter Section corner was 12' South of the BTR Railroad Spike and the old fence line. In my opinion the Railroad Spike bears an uncertainty of 1' north-south and 3' east-west since it is 2.9' East of the extension of a line from the Southwest corner of the Section through said railroad spike found 449.65' to the South. Owen County Survey Book 2, page 361 notes setting property corner stones 29 rods 14 links (487.74') East of the Quarter corner and another 26 rods 13 links (437.58') South. We searched and probed for stones at both these locations but found none. It is noteworthy that we found a large chunk of buried concrete 4 ½' North of the railroad spike that was found 449.65' South of the Quarter corner.



OFFICE OF THE MONROE COUNTY SURVEYOR • Trohn Enright-Randolph

501 N Morton Street Ste 205, Bloomington, IN 47404 • 812-349-2570 • surveyorsoffice@co.monroe.in.us

Page 3 of 4

MONUMENT RECORD

Corner ID: **BeanBI_e23**

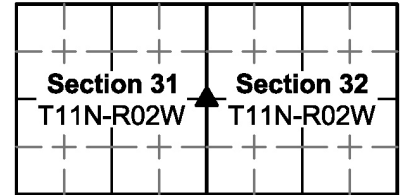
Quarter Corner

Sections 31 & 32- T11N-R02W, 2nd P.M.

Wayne Township, Owen County, Indiana

Though this corner is in Owen County, it is,

in places, noted as Bean Blossom Township, Monroe County, Indiana



GEODETIC COORDINATES: *Northing: 1493455.4', Easting: 3070380.4'*

BASIS OF GEODETIC COORDINATES:

The basis of bearings is Grid North NAD83(2011), Indiana West Zone, Epoch 2010.0000, Geoid Model G2012BU7, Datum NAD83_NO_TRANS, US Survey Feet, derived from GPS observations utilizing the Indiana Real-Time Network (INCORS). Coordinate data was collected with a Javad Triumph LS Network Rover and/or with a Sokkia Set 510 Total Station radially from points located with GPS. Distances obtained with GPS have not been adjusted to ground. To adjust grid distances to ground distances multiply them by a scale factor of 1.000041208.

This document is not complete without the associated Corner Perpetuation plat and report of survey for Section 32 Township 11 North Range 2 West by Michael E. Sheppard of the Monroe County Surveyor's Office dated 7/16/2024.

CERTIFICATIONS:



Michael E. Sheppard

Date: 7/16/2024
Michael E. Sheppard
State of Indiana
Professional Surveyor
No. 20100021



Trohn Enright-Randolph

Date: 7/16/2024
Trohn Enright-Randolph
Monroe County Surveyor



Accepted by the Monroe
County Surveyor Review
Board on 7/16/2024

Donna B. Bickel



MONUMENT RECORD

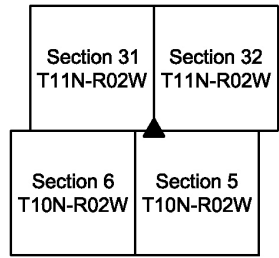
Corner ID: **BeanBI_e25**

Section Corner

Sections 31, 32- T11N-R02W, 2nd P.M.

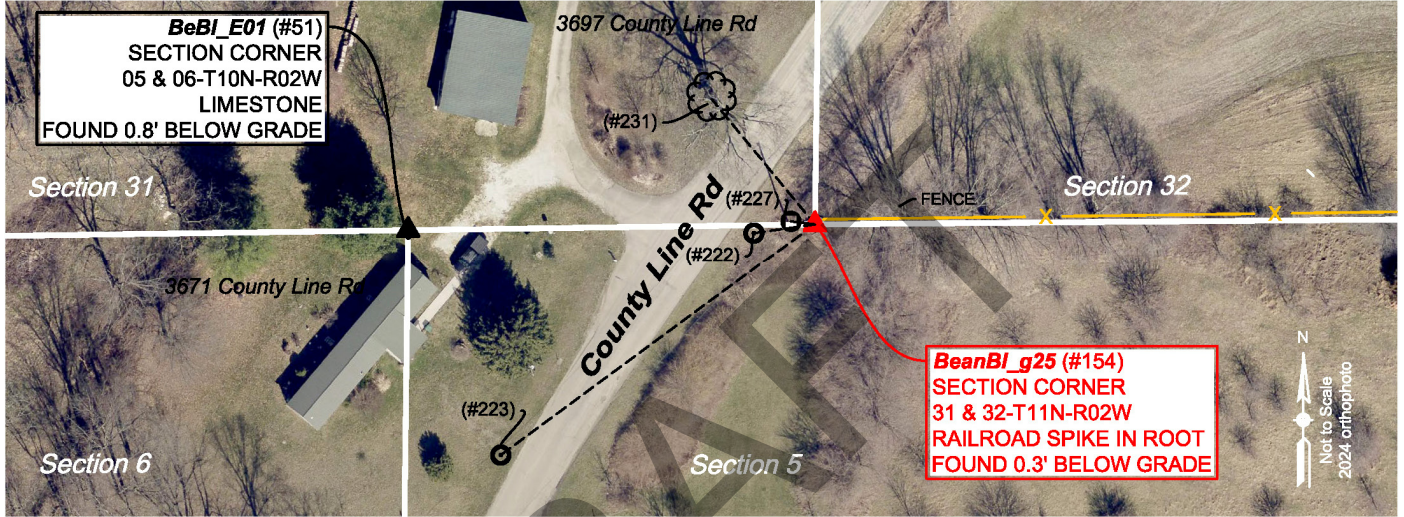
Wayne Township, Owen County, Indiana

Though this corner is in Owen County, it is, in places,
noted as Bean Blossom Township Monroe County



MONUMENT: Describe monument set or found (Include material type, scribing, distance above/below grade, dimensions.)
Railroad Spike (point #154) found in root, 0.3' below ground, in old east-west fence line.

MONUMENT LOCATION SKETCH:



WITNESS MONUMENT TIES: Describe at least three new BT's (Bearing Trees) and/or witness objects established or work done to preserve existing evidence. BT diameters are noted as dbh (diameter at breast height) and are measured approximately 4.5' above ground. Bearings and Distances are measured from the monument to the center of the BT. Bearings and Distances to witness ties were measured with a Sokkia Set 510 Total Station.

ID	Bearing	Distance	Description
(#227)	N82° 52'W	10.1'	3" diameter round steel post at east, northeast & southwest fence corner
(231)	N39° 34'W	67.9'	34" diameter Hackberry tree

MONUMENT ACCESSORIES

Other survey grade monuments that were located in the vicinity and their relation to the monument. Witnesses noted as a Rebar Lite are a 5/8" diameter by 16" polycarbonate rod with a 1-1/2" mag nail in top and yellow plastic cap stamped "MONROE COUNTY WITNESS POINT" set 0.1 foot below grade unless otherwise noted.

Geodetic coordinates in this table are provided in the format Northing, Easting

(#51)	S89° 11' 11"W	170.38'	N:1490806.0492' E:3070162.6956' Cut X on 1' X 0.2' Limestone found 0.8' below grade. (BeBI_E01)
(#222)	S81° 51' 32"W	25.85'	N:1490804.8071' E:3070307.4645' 6" long magnetic nail set 0.1' below ground
(#223)	S53° 39' 52"W	163.32'	N:1490711.7012' E:3070201.4977' 6" long magnetic nail set 0.1' below ground



OFFICE OF THE MONROE COUNTY SURVEYOR • Trohn Enright-Randolph

501 N Morton Street Ste 205, Bloomington, IN 47404 • 812-349-2570 • surveyorsoffice@co.monroe.in.us

MONUMENT RECORD

Corner ID: **BeanBI_e25**

Section Corner

Sections 31, 32- T11N-R02W, 2nd P.M.

Wayne Township, Owen County, Indiana

Though this corner is in Owen County, it is, in places,
noted as Bean Blossom Township Monroe County

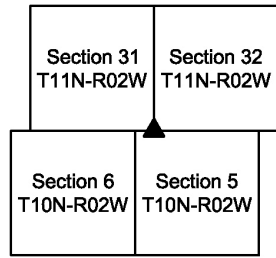


PHOTO IDENTIFIED: Photo Date: 01/26/2024



Photo Orientation & Description: From above



Photo Orientation & Description: From South looking North

EXISTING SURVEY HISTORY Include as much detail and history of the corner as known at the time of perpetuation

ORIGINAL GOVERNMENT SURVEY:

Year Surveyed: 1815 By: I. Holmes Deputy Surveyor
Where filed or recorded: Original notes, Page 236
Original monument: Post
Bearing Trees or Reference Monuments:

Species	Dia.	Bearing	Distance
Sugar	12"	N62°E	19 Links
Walnut	16"	N69°W	27 Links

Notes:

SUBSEQUENT CORNER RESTORATION:

Date Surveyed: 10/16/1900 By: Unreadable
Where filed or recorded: Owen County Survey Bk 2, Pg 374
Original monument: Not Noted
Bearing Trees or Reference Monuments:

Species	Dia.	Bearing	Distance
Beech	27	N3°E	105 1/3 Links
		°	

Notes: Reestablished corner "by remains of old witness".

OTHER SURVEY HISTORY: Include details such as surveyor name, date, recording info, monument description, etc.

DocumentDate	SurveyID	Surveyor	Description	InstrumentNo
6/12/2004	RSID002183	Sheppard, Michael E.	Plat of Section Corner Re-Establishment Survey. Owen/Monroe Line.	
7/26/2015	RSID005385	Meier, David R.	Gospport Boat Ramp	209272.IN

ORIGINAL OR SUBSEQUENT SURVEY EVIDENCE FOUND BY THE MONROE COUNTY SURVEYORS OFFICE: Include, search area or areas, search procedure, etc.

Date of Field work/Search: 01/26/2024 By: MES/JMG Monument Found: Railroad Spike BTs or Reference Objects Found: Yes Project #: 24-001 Field Book: 55, Pg. 66 & 67 Notes:



OFFICE OF THE MONROE COUNTY SURVEYOR • Trohn Enright-Randolph

501 N Morton Street Ste 205, Bloomington, IN 47404 • 812-349-2570 • surveyorsoffice@co.monroe.in.us

MONUMENT RECORD

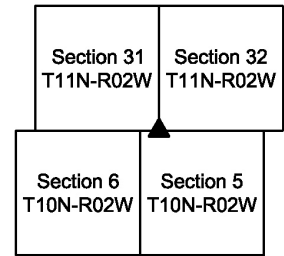
Corner ID: **BeanBI_e25**

Section Corner

Sections 31, 32- T11N-R02W, 2nd P.M.

Wayne Township, Owen County, Indiana

Though this corner is in Owen County, it is, in places,
noted as Bean Blossom Township Monroe County



OTHER EVIDENCE: Describe corner location relative to nearby features and how to reach the corner location – note fences, roads, timber cutting lines, mow lines, clearings, plantings, streams, topo changes, etc.

The Railroad Spike is in a root in an old east-west fence line, 10' East of a steel post where said east-west fence corners with a northeasterly-southwesterly fence that runs along the east side of County Line Road, across from a driveway at 3697 East County Line Road, Gosport In.

MONUMENT PRESERVATION: Describe work done to preserve existing monument.

Monument was uncovered, references were taken, and a steel post was set 0.5' Southwest of the railroad Spike, with Monroe County Survey Marker sign, 3.3' above ground facing South.

THEORY OF LOCATION: Describe the theory of location for acceptance of this monument. Include monument origin and associated uncertainty.

The railroad spike (point #154) was set by me personally, on May 11, 2004, in a Section corner Re-Establishment survey for the Owen County Surveyors Office. The spike was set at the extension of a line beginning at the township corner (XVIII) through the stone found at the Northeast corner of Section 6, Township 10 North Range 2 West (BebI_E01) and at the record offset distance from the original notes and plat of 258 Links ($\pm 170.28'$) from said Bebl_E01 stone. The distance measured this survey was 170.38'. We found a 2015 survey by David R. Meier PLS (RSID005385) that notes setting a mag nail in a tree root at approximately this same location. The Meier mag nail was not found, and he made no mention of the railroad spike in his report. Though the 1900 survey by the Owen County surveyor did not note the type of monument he set, I presumed it was a stone like was set at BeBI_E01, so we probed the area but could not find a stone. The railroad spike is in my opinion the most reliable evidence of the original location of the Southwest corner of Section 32, Township 11 North Range 2 West with 0.5' of uncertainty.

GEODETIC COORDINATES: Northing: 1490808.5', Easting: 3070333.1'

BASIS OF GEODETIC COORDINATES:

The basis of bearings is Grid North NAD83(2011), Indiana West Zone, Epoch 2010.0000, Geoid Model G2012BU7, Datum NAD83_NO_TRANS, US Survey Feet, derived from GPS observations utilizing the Indiana Real-Time Network (INCORS). Coordinate data was collected with a Javad Triumph LS Network Rover and/or with a Sokkia Set 510 Total Station radially from points located with GPS. Distances obtained with GPS have not been adjusted to ground. To adjust grid distances to ground distances multiply them by a scale factor of 1.000041208.

This document is not complete without the associated Corner Perpetuation plat and report of survey for Section 32, Township 11 North Range 2 West by Michael E. Sheppard of the Monroe County Surveyor's Office dated July 16, 2024.



MONUMENT RECORD

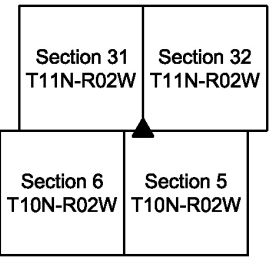
Corner ID: **BeanBI_e25**

Section Corner

Sections 31, 32- T11N-R02W, 2nd P.M.

Wayne Township, Owen County, Indiana

Though this corner is in Owen County, it is, in places,
noted as Bean Blossom Township Monroe County



CERTIFICATIONS:



Michael E. Sheppard

Date: 7/16/2024
Michael E. Sheppard
State of Indiana
Professional Surveyor
No. 20100021



Trohn Enright-Randolph

Date: 7/16/2024:
Trohn Enright-Randolph
Monroe County Surveyor



Accepted by the Monroe
County Surveyor Review
Board on 7/16/2024

Donna Baird

DRAFT



MONUMENT RECORD

Corner ID: **BeanBI_g21**

Quarter Corner

Sections 29 & 32- T11N-R02W, 2nd P.M.

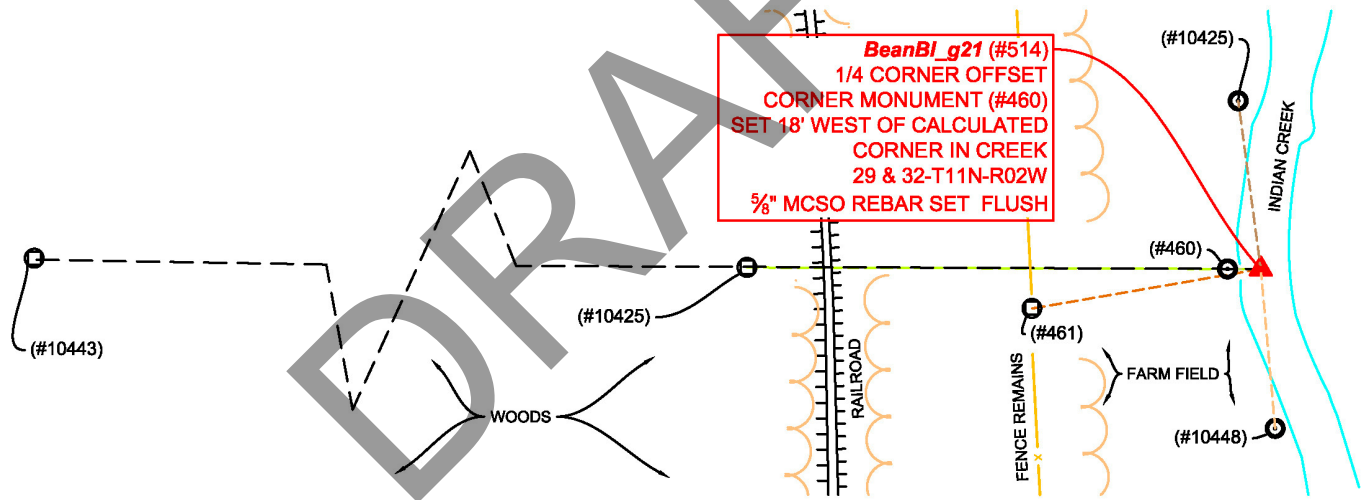
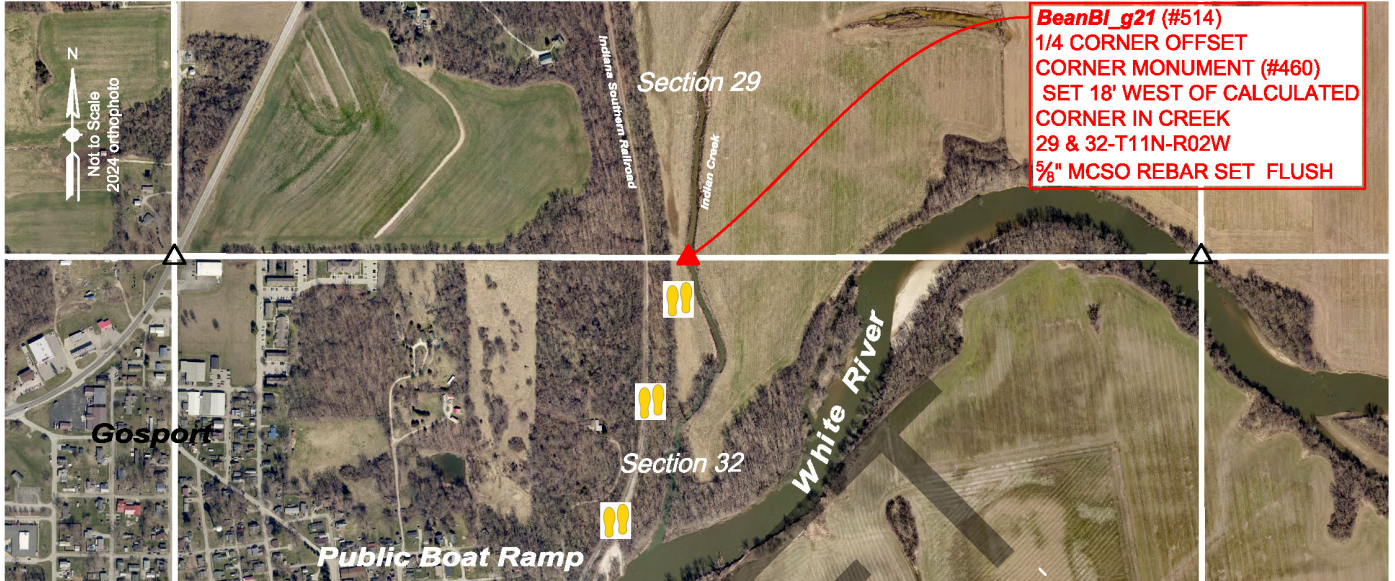
Wayne Township, Owen County, Indiana

Though in Owen County, this corner is, in places is also noted as
Bean Blossom Township, Monroe County, Indiana

MONUMENT: Describe monument set or found (Include material type, scribing, distance above/below grade, dimensions.)

The calculated location of this corner (#514) falls in a large creek, making setting any kind of monument that would last any time not feasible. As such a 5/8" rebar (24" long), with 2" diameter aluminum cap inscribed MONROE COUNTY SURVEYORS OFFICE SHEPPARD PLS#20100021, (#460) was set on the Section line, 18.0' West of the calculated Quarter Section corner. The rebar was set flush with ground, 1 1/2' West of the West top of bank of the creek. The rebar is in a patch of grass between said top of bank and the edge of a crop field.

MONUMENT LOCATION SKETCH:



WITNESS MONUMENT TIES: Describe at least three new BT's (Bearing Trees) and/or witness objects established or work done to preserve existing evidence. BT diameters are noted as dbh (diameter at breast height) and are measured approximately 4.5' above ground. Bearings and Distances are measured from the monument to the center of the BT. Bearings and Distances to witness ties were measured with a Sokkia Set 510 Total Station.

ID	Bearing	Distance	Description
(#461)	S80° 15'W	124.6'	Steel post found in old north-south fence line at base of hill. Monroe county witness sign attached this survey.
(#10425)	N89°48'27"W	275.8'	East base of leaning (west) round steel post at north-south and west fence corner

MONUMENT ACCESSORIES

Other survey grade monuments that were located in the vicinity and their relation to the monument. Witnesses noted as a Rebar Lite are a 5/8" diameter by 16" polycarbonate rod with a 1-1/2" mag nail in top and yellow plastic cap stamped "MONROE COUNTY WITNESS POINT" set 0.1 foot below grade unless otherwise noted.

Geodetic coordinates in this table are provided in the format Northing, Easting.

(#460)	N89° 48' 27"W	18.00'	N:1496065.1839' E:3073143.6653' Aluminum capped rebar set flush with ground 1 1/2' West of West top of bank of creek
(#10448)	S05° 11' 21"E	85.53'	N:1495979.9489' E:3073169.4003' Rebar Lite on West top of bank of creek
(#10445)	N07° 40' 40"W	90.75'	N:1496155.0556' E:3073149.5415' Rebar Lite on West top of bank of creek
(10443)	N89° 45' 37"W	1594.52'	N:1496071.7941' E:3071567.1573' Top of slightly leaning 3/4" inside diameter iron pipe found 0.6' above ground, 0.5' south of an old east and south fence corner. The pipe is 1.3' south of the Section line as established in this survey.



OFFICE OF THE MONROE COUNTY SURVEYOR • Trohn Enright-Randolph

501 N Morton Street Ste 205, Bloomington, IN 47404 • 812-349-2570 • surveyorsoffice@co.monroe.in.us

MONUMENT RECORD

Corner ID: **BeanBI_g21**

Quarter Corner

Sections 29 & 32- T11N-R02W, 2nd P.M.

Wayne Township, Owen County, Indiana

Though in Owen County, this corner is, in places is also noted as
Bean Blossom Township, Monroe County, Indiana

PHOTO IDENTIFIED: Photo Date: 04/30/2024



Photo Orientation & Description: From South looking North



Photo Orientation & Description: From above

EXISTING SURVEY HISTORY Include as much detail and history of the corner as known at the time of perpetuation

ORIGINAL GOVERNMENT SURVEY:

Year Surveyed: 1819 By: Thos Brown, Deputy Surveyor

Where filed or recorded: Owen County Original Notes page 12.

Original monument: Post

Bearing Trees or Reference Monuments:

Species	Dia.	Bearing	Distance
Elm	8"	N21°E	20 Links
Box Elder	4"	S62°W	22 Links

Notes: At that time the west bank of the creek (cited as white river) was 1.67 chains East.

SUBSEQUENT CORNER RESTORATION:

Date Surveyed: October 5, 1852 By: WM McCormick, Owen County Surveyor

Where filed or recorded: Owen County Survey Book 1, Page 50

Original monument: Stone marked ¼ S

Bearing Trees or Reference Monuments:

Species	Dia.	Bearing	Distance
Elm	40"	S68°E	31 Links
Elm	20"	N68°E	92 Links

Notes:

OTHER SURVEY HISTORY: Include details such as surveyor name, date, recording info, monument description, etc.

Date	RSID	Surveyor	Description	File Location
No surveys	were	Found	Referring to this corner	

ORIGINAL OR SUBSEQUENT SURVEY EVIDENCE FOUND BY THE MONROE COUNTY SURVEYORS OFFICE: Include, search area or areas, search procedure, etc.

Date of Field work/Search: 04/30/2024 By: MES/JMG Monument Found: None-calculated corner falls in creek. Offset rebar set this survey. BTs or Reference Objects Found: References made Project #: 24-001 Field Book: 56, pages 30,32,34 & 35 Notes:

OTHER EVIDENCE: Describe corner location relative to nearby features and how to reach the corner location – note fences, roads, timber cutting lines, mow lines, clearings, plantings, streams, topo changes, etc.

The corner falls in a creek. The same landowner owns the land all around it, so there are no visible occupation lines. We reached the site by parking at the Gosport public boat ramp, then walking North, along the East base of railroad tracks approximately 1600' to the Section line, then walk East approximately 200' to the corner.

MONUMENT PRESERVATION: Describe work done to preserve existing monument.

The corner is in a creek. Reference monuments complete with GPS coordinates were set in the corner's vicinity.

THEORY OF LOCATION: Describe the theory of location for acceptance of this monument. Include monument origin and associated uncertainty.

The corner was established at the extension of a line beginning at the mag nail found at the Northwest corner of the Section, through a round steel corner post where an old West bound fence line begins and intersects an old north-south railroad right of way fence and at an equidistant split (as near as possible) from said mag nail and a rebar set at the Northeast corner of the Section. We searched for additional monuments cited in old records, consisting of a stone 999 Links East of the Northwest corner of the Section and a X on rock cited in Owen County Survey Book 1, page 82 as marking the Northeast corner of Gosport, on the west side of the railroad track. Neither were found, though we did locate an east-west and south fence intersection, approximately 797.4' west of the corner and found it to be approximately on line between the round steel corner post and mag nail at the Northwest corner of the Section. Additionally, an iron pipe (#10443) was located 1.3' South of this line. If the corner were on a straight line between the mag nail at the Northwest corner of the Section and the rebar set at the Northeast corner of the Section, it would be 13.5' North, which would be at considerable odds with the long-standing occupation lines between it and the Northwest corner of the Section. In my opinion the corner established this survey has an uncertainty of 4' north-south and 10' east-west of being where it originally existed.

GEODETIC COORDINATES: Northing: 1496065.1' Easting: 3073161.7'

BASIS OF GEODETIC COORDINATES:

The basis of bearings is Grid North NAD83(2011), Indiana West Zone, Epoch 2010.0000, Geoid Model G2012BU7, Datum NAD83_NO_TRANS, US Survey Feet, derived from GPS observations utilizing the Indiana Real-Time Network (INCORS). Coordinate data was collected with a Javad Triumph LS Network Rover and/or with a Sokkia Set 510 Total Station radially from points located with GPS. Distances obtained with GPS have not been adjusted to ground. To adjust grid distances to ground distances multiply them by a scale factor of 1.000041208.

This document is not complete without the associated Corner Perpetuation plat and report of survey for Section 32 Township 11 North Range 2 West by Michael E. Sheppard of the Monroe County Surveyor's Office dated July 16, 2024.



OFFICE OF THE MONROE COUNTY SURVEYOR • Trohn Enright-Randolph

501 N Morton Street Ste 205, Bloomington, IN 47404 • 812-349-2570 • surveyoroffice@co.monroe.in.us

MONUMENT RECORD

Corner ID: **BeanBI_g21**

Quarter Corner

Sections 29 & 32- T11N-R02W, 2nd P.M.

Wayne Township, Owen County, Indiana

Though in Owen County, this corner is, in places is also noted as
Bean Blossom Township, Monroe County, Indiana

CERTIFICATIONS:

PENDING

DRAFT



MONUMENT RECORD

Corner ID: **BeBI_G01**

Quarter Corner

Section 5- T10N-R02W, 2nd P.M.

Wayne Township, Owen County, Indiana

Though this corner is in Owen County, it is, in places, noted as
Bean Blossom Township, Monroe County, Indiana

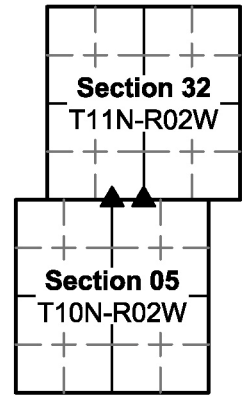
And Corner ID: **BeanBI_g25**

Quarter Corner

Section 32- T11N-R02W, 2nd P.M.

Wayne Township, Owen County, Indiana

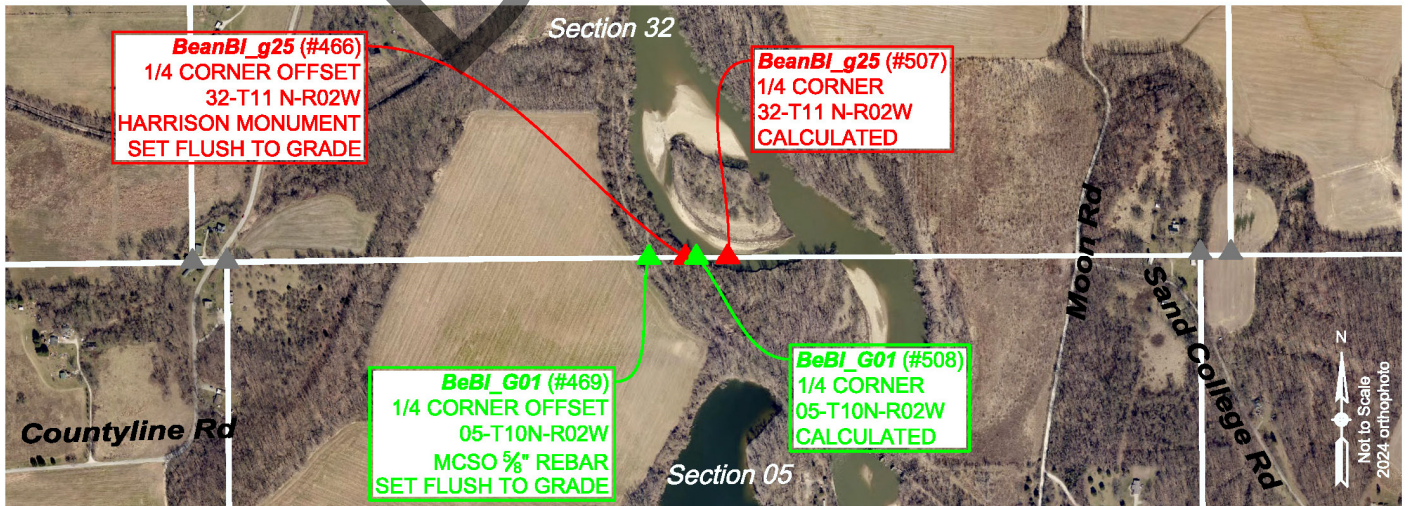
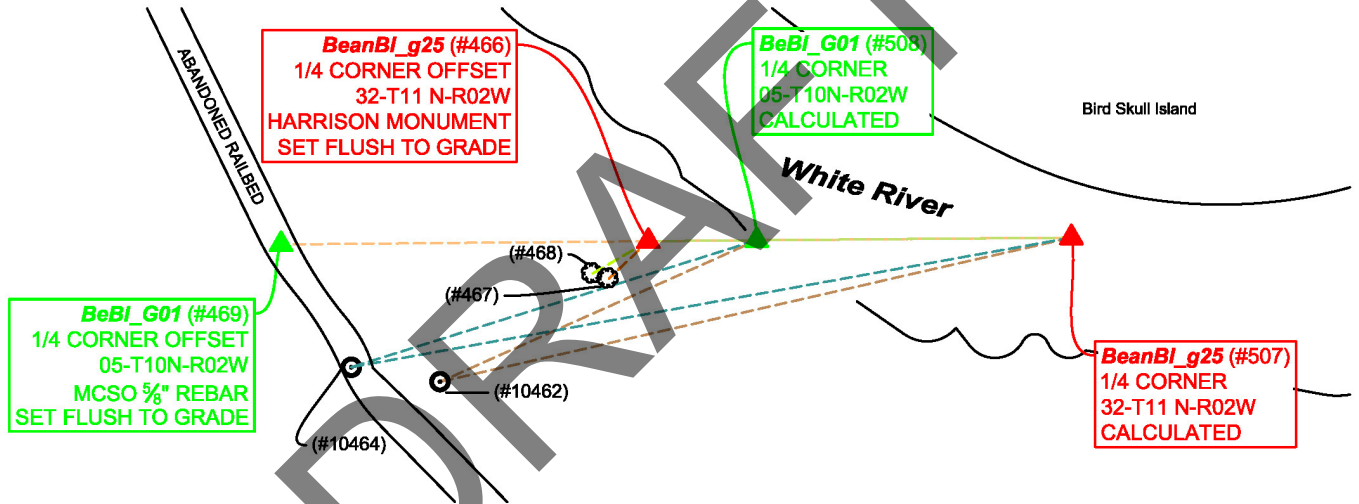
Though this corner is in Owen County, it is, in places, noted as
Bean Blossom Township, Monroe County, Indiana



MONUMENT: Describe monument set or found (Include material type, scribing, distance above/below grade, dimensions.)

Both BeanBI_g25 (#507) (South Quarter Corner Section 32 Township 11 North Range 2 West) and BeanBI_G01 (#508) (North Quarter Corner Section 5 Township 10 North Range 2 West) are calculated corners (165.38' apart) that fall in White River. We set a Harrison monument (#466) on the Township line 57.0' from BeBI_G01, 20' West of the top of bank of the river and a 5/8" diameter rebar (24" long), with 2" diameter aluminum cap inscribed MONROE COUNTY SURVEYORS OFFICE SHEPPARD PLS#20100021, flush with ground, in the approximate center of an abandoned railroad bed, on the Township line, 250.0' from BeBI_G01.

MONUMENT LOCATION SKETCH:



OFFICE OF THE MONROE COUNTY SURVEYOR • Trohn Enright-Randolph

501 N Morton Street Ste 205, Bloomington, IN 47404 • 812-349-2570 • surveyorsoffice@co.monroe.in.us

MONUMENT RECORD

Corner ID: **BeBI_G01**

Quarter Corner

Section 5- T10N-R02W, 2nd P.M.

Wayne Township, Owen County, Indiana

Though this corner is in Owen County, it is, in places, noted as
Bean Blossom Township, Monroe County, Indiana

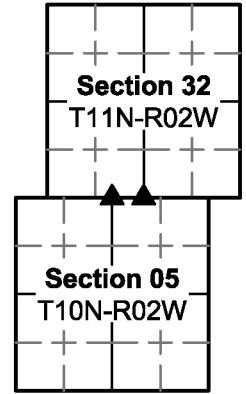
And Corner ID: **BeanBI_g25**

Quarter Corner

Section 32- T11N-R02W, 2nd P.M.

Wayne Township, Owen County, Indiana

Though this corner is in Owen County, it is, in places, noted as
Bean Blossom Township, Monroe County, Indiana



WITNESS MONUMENT TIES: Describe at least three new BT's (Bearing Trees) and/or witness objects established or work done to preserve existing evidence. BT diameters are noted as dbh (diameter at breast height) and are measured approximately 4.5' above ground. Bearings and Distances are measured from the monument to the center of the BT. Bearings and Distances to witness ties were measured with a Sokkia Set 510 Total Station. Note the witnesses in this table are to a Harrison monument on the Township Line, 57.0' West of BeBI_G01 (#508) and 222.38' West of BeanBI_g25 (#507)

ID	Bearing	Distance	Description
(#467)	S46° 39' W	28.6'	19" diameter Sycamore tree
(#468)	S59° 54' W	33.9'	17" diameter Sycamore tree

MONUMENT ACCESSORIES

Other survey grade monuments that were located in the vicinity and their relation to the monument. Witnesses noted as a Rebar Lite are a 5/8" diameter by 16" polycarbonate rod with a 1-1/2" mag nail in top and yellow plastic cap stamped "MONROE COUNTY WITNESS POINT" set 0.1 foot below grade unless otherwise noted.

Geodetic coordinates in this table are provided in the format Northing, Easting.

(#466)	S89° 30' 28"W S89° 30' 28"W	57.00' From #508 222.38' From #507	N: 1490812.2798 ' E: 3072724.7250 Harrison Monument inscribed Quarter Corner set flush with ground
(#469)	S89° 30' 28"W S89° 30' 28"W	250.00' From #508 415.38' From #507	N: 1490827.6118' E: 3072561.0392' MCSO aluminum capped rebar set flush in cl abandoned Railroad bed
(#10462)	S42° 16' 21"W S75° 23' 37"W	73.81' From #508 222.20' From #507	N: 1490775.1470' E:3072761.3843 Rebar Lite
(#10464)	S72° 36' 55"W S79° 47' 38"W	223.29' From #508 384.55' From #507	N:1490763.0436' E:3072597.9397 6" long Mag nail set 0.1' below ground in approximate center of abandoned railroad bed

PHOTO IDENTIFIED: Photo Date: 04/30/2024



Photo Orientation & Description: From East looking West at Harrison Monument set



Photo Orientation & Description: From South Looking North at rebar and mag nail set in old, abandoned railroad bed.



OFFICE OF THE MONROE COUNTY SURVEYOR • Trohn Enright-Randolph

501 N Morton Street Ste 205, Bloomington, IN 47404 • 812-349-2570 • surveyorsoffice@co.monroe.in.us

Page 2 of 4

MONUMENT RECORD

Corner ID: **BeBI_G01**

Quarter Corner

Section 5- T10N-R02W, 2nd P.M.

Wayne Township, Owen County, Indiana

Though this corner is in Owen County, it is, in places, noted as
Bean Blossom Township, Monroe County, Indiana

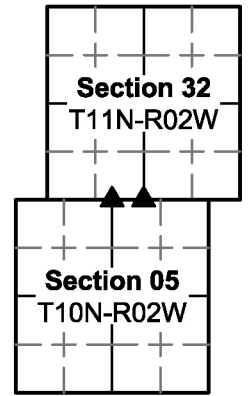
And Corner ID: **BeanBI_g25**

Quarter Corner

Section 32- T11N-R02W, 2nd P.M.

Wayne Township, Owen County, Indiana

Though this corner is in Owen County, it is, in places, noted as
Bean Blossom Township, Monroe County, Indiana



EXISTING SURVEY HISTORY *Include as much detail and history of the corner as known at the time of perpetuation*

**ORIGINAL GOVERNMENT SURVEY: South Quarter
Corner Section 32 Township 11 North Range 2 West
(BeanBI_g25)**

Year Surveyed: 1819 *By:* J Holmes Deputy Surveyor

Where filed or recorded: Original Notes Page 237

Original monument: Post

Bearing Trees or Reference Monuments:

Species	Dia.	Bearing	Distance
Hackberry	14"	S61°W	17 Links
W Oak	6"	S49°E	41 Links

Notes:

ORIGINAL GOVERNMENT SURVEY: (BeanBI_g25)

The North Quarter Corner of Section 5
Township 10 North Range 2 West was not set in
the Original Government Survey.

SUBSEQUENT CORNER RESTORATION:

Notes: None found for either corner.

OTHER SURVEY HISTORY: *Include details such as surveyor name, date, recording info, monument description, etc.*

DocumentDate	SurveyID	Surveyor	Description	InstrumentNo
6/12/2004	RSID002183	Sheppard, Michael E.	Plat of Section Corner Re-Establishment Survey. Owen/Monroe Line.	

ORIGINAL OR SUBSEQUENT SURVEY EVIDENCE FOUND: *Include, search area or areas, search procedure, etc.*

Date of Field work/Search: 4/30/2024 *By:* MES/JMG *Monument Found:* None-Offset Monuments set *BTs or Reference Objects were established.* *Project #:* 24-001 *Field Book:* 56, pages 36 & 37.

OTHER EVIDENCE: *Describe corner location relative to nearby features and how to reach the corner location – note fences, roads, timber cutting lines, mow lines, clearings, plantings, streams, topo changes, etc.*

We reached the location by driving down (South) a lane that begins at the Gosport public boat ramp and turns into an old, abandoned railroad bed that crosses the Township line. There is no visible evidence of the Township line.

MONUMENT PRESERVATION: *Describe work done to preserve existing monument.*

Since both corners fall in white river, offset and witness monuments were set and State plane coordinates established on them.

THEORY OF LOCATION: *Describe the theory of location for acceptance of this monument. Include monument origin and associated uncertainty.*

The corners were determined as a lost Section corners. A lost Section corner is defined as a corner whose original position cannot be determined by substantial evidence, either from traces of the original mark or from acceptable evidence or reliable testimony that bears upon the original position, and whose location can be restored only by reference to one or more interdependent corners. The South Quarter corner of Section 32 Township 11 North Range 2 West (#507 BeanBI_g25) was calculated online between a railroad spike in a root at the Southwest corner of said Section 32 (#154 BeanBI_e25) and a Harrison monument at the Southeast corner of said Section 32 (#503 BeanBI_i25) and at an equidistant slit of the length of said line. The North Quarter corner of Section 5 Township 10 North Range 2 West (#508 BeBI_G01) was calculated online between a railroad spike in a root at the Southwest corner of Section 32 township 11 North Range 2 West (#154 BeanBI_e25) and a Harrison monument at the Southeast corner of said Section 32 (#503 BeanBI_i25) and at an equidistant slit of the length of the line between a stone at the Northwest corner of said Section 5 (#51 BeBI_E01) and a 1/2" rebar at the Northeast corner of said Section 5 (#170 BeBI_I01). I had calculated the South Quarter corner of said Section 32 (BeanBI_g25) by the same methodology in a prior 2004 survey for the Owen County Surveyors Office and set a Harrison monument 125.0' west as an offset corner monument. Since 2004 the Riverbank has moved West.



OFFICE OF THE MONROE COUNTY SURVEYOR • Trohn Enright-Randolph

501 N Morton Street Ste 205, Bloomington, IN 47404 • 812-349-2570 • surveyorsoffice@co.monroe.in.us

Page 3 of 4

MONUMENT RECORD

Corner ID: **BeBI_G01**

Quarter Corner

Section 5- T10N-R02W, 2nd P.M.

Wayne Township, Owen County, Indiana

Though this corner is in Owen County, it is, in places, noted as
Bean Blossom Township, Monroe County, Indiana

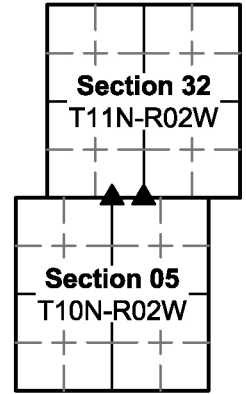
And Corner ID: **BeanBI_g25**

Quarter Corner

Section 32- T11N-R02W, 2nd P.M.

Wayne Township, Owen County, Indiana

Though this corner is in Owen County, it is, in places, noted as
Bean Blossom Township, Monroe County, Indiana



GEODETIC COORDINATES: *Northing:* 1490831.2' *Easting:* 3072976.4' (BeanBI_g25)

GEODETIC COORDINATES: *Northing:* 1490829.8' *Easting:* 3072811.0' (BeBI_G01)

BASIS OF GEODETIC COORDINATES:

The basis of bearings is Grid North NAD83(2011), Indiana West Zone, Epoch 2010.0000, Geoid Model G2012BU7, Datum NAD83_NO_TRANS, US Survey Feet, derived from GPS observations utilizing the Indiana Real-Time Network (INCORS). Coordinate data was collected with a Javad Triumph LS Network Rover and/or with a Sokkia Set 510 Total Station radially from points located with GPS. Distances obtained with GPS have not been adjusted to ground. To adjust grid distances to ground distances multiply them by a scale factor of 1.000041208.

This document is not complete without the associated Corner Perpetuation plat and report of survey for Section 32 by Michael E. Sheppard of the Monroe County Surveyor's Office dated July 16, 2024.

CERTIFICATIONS:



Michael E. Sheppard

Date: 7/16/2024
Michael E. Sheppard
State of Indiana
Professional Surveyor
No. 20100021



Trohn Enright-Randolph

Date: 7/16/2024
Trohn Enright-Randolph
Monroe County Surveyor



Accepted by the Monroe
County Surveyor Review
Board on 7/16/2024

