



AGENDA
SURVEYOR REVIEW BOARD
HYBRID MEETING
Via Microsoft Teams
Tuesday, August 20, 2024

- I. Call to Order**
- II. Approval of agenda**
- III. Approval of minutes from July 16, 2024**
- IV. New Business**
 - a. Office Update
- V. Certification of corners:**
 - a. Corner Documentation Program: **N/A**
 - b. County Surveyor Perpetuation: **N/A**
 - c. Professional Services Agreement: **Rich_A15*, Rich_A17*, Rich_A19*, Rich_A21, Rich_A23*, TwpCor_IX, Rich_C15*, Rich_C17*, Rich_C19, Rich_C21, Rich_C23*, Rich_C25*, Rich_E15, Rich_E17*, Rich_E19, Rich_E21, Rich_E23*, Rich_E25***
- VI. Public input**
- VII. Adoption of next meeting date**
- VIII. Adjournment**

**Has no previous certification*

Teams Meeting Information

https://teams.microsoft.com/l/meetup-join/19%3ameeting_MzRkODI1M2Q0tMjVkJkY0NDdjLTk5NjktOGE2Mzg2NWZhNTQx%40thread.v2/0?context=%7b%22Tid%22%3a%2249a60700-4c0c-4ece-b904-fb92c600e553%22%2c%22Oid%22%3a%22db83725f-c48f-476f-8894-d4bb087d29f8%22%7d

Meeting ID: 247 640 086 109

Passcode: BTv9wR

Or call in (audio only)

[+1 872-242-9432,225452587#](tel:+1872-242-9432,225452587#) United States, Chicago

[Find a local number](#) [Reset PIN](#)

The meeting is open to the public. Dates are subject to change.

For additional information, please call the Office of the Monroe County Surveyor at (812) 349-2570.

Anyone who requires an auxiliary aid or service for effective communication, or a modification of policies or procedures to participate in a program, service, or activity of Monroe County, should contact Monroe County Title VI Coordinator, (812) 349-2553, as soon as possible but no later than forty-eight (48) hours before the scheduled event.

Individuals requiring special language services should, if possible, Government Title VI Coordinator at least seventy-two (72) hours prior to the date on which the services will be needed.

Survey Utility



MEETING MINUTES

**SURVEYOR REVIEW BOARD
501 N. Morton Ave. Room 211
HYBRID MEETING Via Teams App
Tuesday, July 16, 2024, 4:00 PM**

MEMBERS PRESENT: Eric Deckard, Todd Borgman

MEMBERS ABSENT: Rachel Oser

STAFF: Trohn Enright-Randolph (County Surveyor), Jason George (Survey Technician), Mike Sheppard (Professional Surveyor), Donna Barbrick (Secretary)

I. Call to Order by Trohn Enright Randolph at 4:04pm

II. Approval of agenda. Motion to approve by Eric Deckard; seconded by Todd Borgman.

VOTE: AYE. Agenda approved.

III. Approval of minutes from June 18, 2024. Motion to approve by Deckard; seconded by Borgman. VOTE: AYE. Minutes approved.

IV. New Business

- a. **Office Update.** Trohn mentioned recent events including a storm event with property damage and power outages. He said the county servers were compromised but everything is back up and running, mostly. He said staff were told not to speculate about what data was compromised.

II. Certification of corners:

- a. **Corner Documentation Program: N/A**
- b. **County Surveyor Preservation Initiative: TwpCorVI**

Trohn said Mike and Jason were able to go out and perpetuate this corner. He brought up older tie sheets by Rachel Oser and Kevin Enright. Mike Sheppard said some heavy equipment had been in there and the stone monument looked bad. He said we dug it up and put it back. He reviewed the history of the corner since 1902. He found other surveyors using a fence intersection. Trohn said a lot of this was hashed out in 2019.

Deckard said he was good with the stone being replanted according to the coordinates.

Motion by Borgman to approve; second by Deckard. VOTE: AYE (unanimous).

Motion carried.

- c. **County Surveyor Perpetuation: BeanBl_e21*, BeanBl_e23*, BeanBl_e25*, BeanBl_g21*, BeanBl_g25, BeBl_G01**

Michael Sheppard started with **BeanBl_e25**. He said we found a railroad spike that was set by me previously. He said there was a Meier survey that set a mag nail in a tree root. Trohn brought up the perpetuation survey of the section.

Deckard suggested a minor edit: add the colon between the E and the coordinate.

BeanBl_e23. A railroad spike was found that fit with lines of occupation. Sheppard talked about the history of the corner.

BeanBl_e21. Mag nail in washer was found and painted. This corner is in Owen County.
BeanBl_g21. This is a calculated corner that falls in a creek, with no visible occupation lines. Sheppard said reference monuments complete with GIS coordinates were set in the vicinity.
BeBl_G01 and BeanBl_g25. Sheppard said these are calculated; both of them fall in the river. He said we set a Harrison monument on the Township line 57' from BeanBl_G01. Trohn talked about creating two tie sheets. There was a discussion of how to create the tie sheets. Trohn said these are two corners falling in the White River and two offset corners were set so surveyors can tie off to those and then calculate to the corners that are in the White River. He talked about obliterated corners versus lost corners.

Trohn suggested a motion to approve BeanBl_e21, BeanBl_e23 with the condition that the northern and eastern coordinates are added to witness 1497; also the approval of BeanBl_e25 with the condition of adding a colon between the E and the coordinate; also the approval of BeanBl_g21 with the condition of changing the witness on the sketch to correspond with the witness 10445 and adding a hashmark on witness 10443; also the approval of BeanBl_g25 and BeBl_G01 with the condition of adding another measurement to the offset corner to witness 10464 and creating another tie sheet where titles and colors are flipped. So moved by Borgman; seconded by Deckard. VOTE: AYE (unanimous) and corners approved.

III. Public input.

Sheppard had a comment about a Farkas rebar. He said he pulled up an old USGS map and it showed north of the road bed.

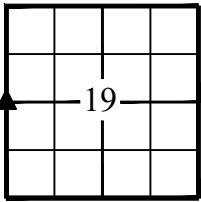
IV. Adoption of next meeting date: August 20.

V. Adjournment

**Has no previous certification*

Minutes approved _____

Secretary _____



MONUMENT RECORD

Corner ID: **RICH A-15**

Quarter Section Corner

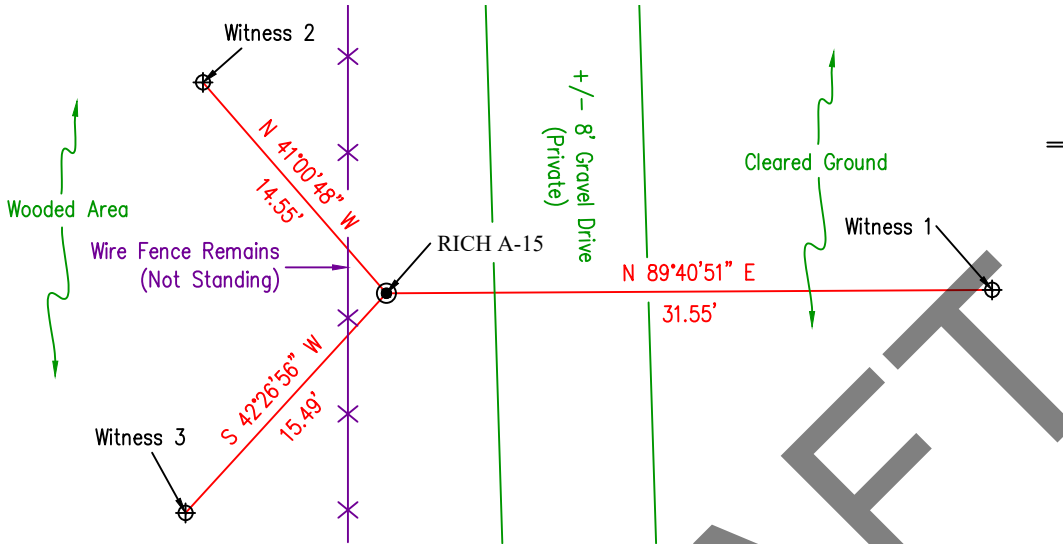
Section 19, Township 9 North, Range 2 West, 2nd P.M.

Richland Township, Monroe County, Indiana

MONUMENT: A 5/8 inch diameter rebar with a cap stamped "Deckard" was set flush with grade.

GEODETIC COORDINATES: Northing: 1440416.44 Easting: 3066034.62

MONUMENT LOCATION SKETCH:



LEGEND

- Rebar Set
- ⊕ Witness Rebar-Lite Set

SCALE 1" = 10'

WITNESS MONUMENT TIES:

I.D.	Bearing	Distance	Witness Description
1	N 89°40'51" E	31.55'	Rebar-Lite Set 2 inches below grade
2	N 41°00'48" W	14.55'	Rebar-Lite Set 2 inches below grade
3	S 42°26'56" W	15.49'	Rebar-Lite Set 2 inches below grade

MONUMENT PRESERVATION: A t-post with a "Survey Marker Nearby" sign was placed on the West side of the monument.

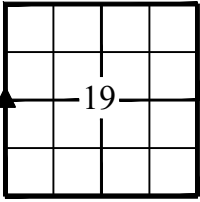
ACCESS: This monument is situated +/- 6 feet West of a privately owned gravel drive which runs South off of Mallory Road. At the time of this survey this corner could be accessed using said gravel drive.

PHOTO IDENTIFIED:

Photo Date: 3/28/2024

Looking Down





MONUMENT RECORD

Corner ID: **RICH A-15**

Quarter Section Corner

Section 19, Township 9 North, Range 2 West, 2nd P.M.

Richland Township, Monroe County, Indiana

EXISTING SURVEY HISTORY: The West quarter corners of Sections along the West tier of Townships were not set in the Original Government Surveys. No surveys were found making reference to this corner having been set prior to this survey.

PREVIOUS CERTIFICATION: None

THEORY OF LOCATION/CORNER ANALYSIS: Having found no prior reference to this corner, this corner was calculated and set equidistant between the RICH A-13 and RICH A-17 and on-line between the rebar found marking the East quarter corner of Section 24, Township 9 North, Range 3 West and the rebar found marking the Southeast corner of the Northeast quarter of the Northeast quarter of Section 24, Township 9 North, Range 3 West.

FIELD PERSONNEL:

Field Date: 3/28/24 By: CD & OL Project #: 24-35 Notes: Field notes on file at M.C.S.O.

BASIS OF GEODETIC COORDINATES: Coordinates shown hereon were obtained from GPS observations utilizing the Indiana Real-Time Network (INCORS). Indiana West Zone, NAD83, State Plane Grid Coordinates, US Survey Feet. Geoid model ContinentalUS_NGS2018. Coordinate data was collected using a Carlson BRX7 GPS and an Carlson RT4 Data Collector. Coordinate positions are grid north (Indiana State Plane West Zone).

UNCERTAINTIES IN THE CORNER LOCATION DUE TO:

- Variances in the Monuments: None
- Discrepancies in the Documents: None
- Inconsistencies in the lines of Occupation: None
- Theoretical Uncertainty (Random Errors in Measurement): The relative positional accuracy of this survey is within that allowable for a Rural class survey (0.26' plus 200 PPM) as defined I.A.C. Title 865

PHOTO IDENTIFIED:

Photo Date: 3/28/2024

Looking West

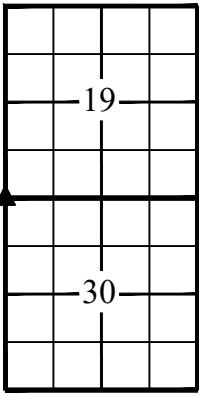


MONUMENT RECORD

Corner ID: **RICH A-17**

Section Corner

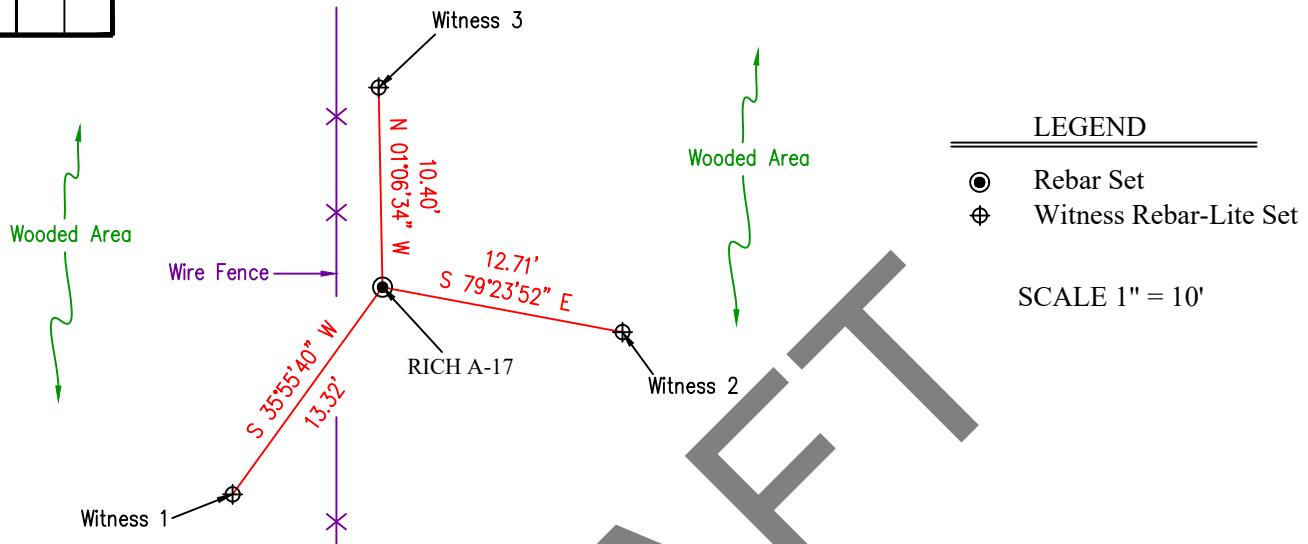
Sections 19 & 30, Township 9 North, Range 2 West, 2nd P.M.
Richland Township, Monroe County, Indiana



MONUMENT: A 5/8 inch diameter rebar with a cap stamped "Deckard" was set 6 inches above grade.

GEODETIC COORDINATES: Northing: 1437754.03 Easting: 3066063.59

MONUMENT LOCATION SKETCH:



LEGEND

- Rebar Set
- ⊕ Witness Rebar-Lite Set

SCALE 1" = 10'

WITNESS MONUMENT TIES:

I.D.	Bearing	Distance	Witness Description
1	S 35°55'40" W	13.32'	Rebar-Lite Set 2 inches below grade
2	S 79°23'52" E	12.71'	Rebar-Lite Set 2 inches below grade
3	N 01°06'34" W	10.40'	Rebar-Lite Set 2 inches below grade

MONUMENT PRESERVATION: A t-post with a "Survey Marker Nearby" sign was placed on the North side of the monument.

OTHER EVIDENCE: This monument is situated +/- 3 feet East of a wire fence running North and South.

PHOTO IDENTIFIED:

Photo Date: 3/28/2024

Looking Down

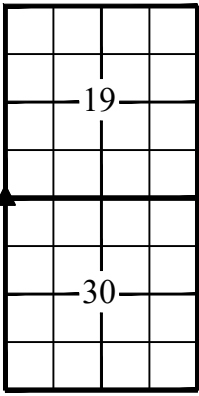


MONUMENT RECORD

Corner ID: **RICH A-17**

Section Corner

Sections 19 & 30, Township 9 North, Range 2 West, 2nd P.M.
Richland Township, Monroe County, Indiana



EXISTING SURVEY HISTORY:

Post - Original Government Survey, 1811-1815
Rebar with Cap Set - Bernard A. Guerretaz II, April 18th, 2008, Instr. 2024002549

PREVIOUS CERTIFICATION: None

THEORY OF LOCATION/CORNER ANALYSIS: This corner was calculated and set at the record distance of 146.52 feet (222 links) North of the stone found marking the Southeast corner of Section 24, Township 9 North, Range 3 West per the Original Government Notes. The rebar referenced in the 2008 Guerretaz survey was not recovered, however the methodology used to establish this corner shown on that 2008 survey is consistent with that used in this survey. An old fence intersection was found approximately 26 feet north of the position calculated in this survey per the GLO Notes, from that intersection wire fencing runs North-South and East. There may be unwritten rights associated with the wire fence intersection located North of the corner established in this survey.

FIELD PERSONNEL:

Field Date: 3/28/24 By: CD & OL Project #: 24-35 Notes: Field notes on file at M.C.S.O.

BASIS OF GEODETIC COORDINATES: Coordinates shown hereon were obtained from GPS observations utilizing the Indiana Real-Time Network (INCORS). Indiana West Zone, NAD83, State Plane Grid Coordinates, US Survey Feet. Geoid model ContinentalUS_NGS2018. Coordinate data was collected using a Carlson BRX7 GPS and an Carlson RT4 Data Collector. Coordinate positions are grid north (Indiana State Plane West Zone).

UNCERTAINTIES IN THE CORNER LOCATION DUE TO:

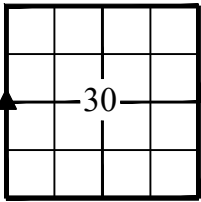
- Variances in the Monuments: None
- Discrepancies in the Documents: None
- Inconsistencies in the lines of Occupation: As much as 26 feet, see "Corner Analysis"
- Theoretical Uncertainty (Random Errors in Measurement): The relative positional accuracy of this survey is within that allowable for a Rural class survey (0.26' plus 200 PPM) as defined I.A.C. Title 865

PHOTO IDENTIFIED:

Photo Date: 3/28/2024

Looking North





MONUMENT RECORD

Corner ID: **RICH A-19**

Quarter Section Corner

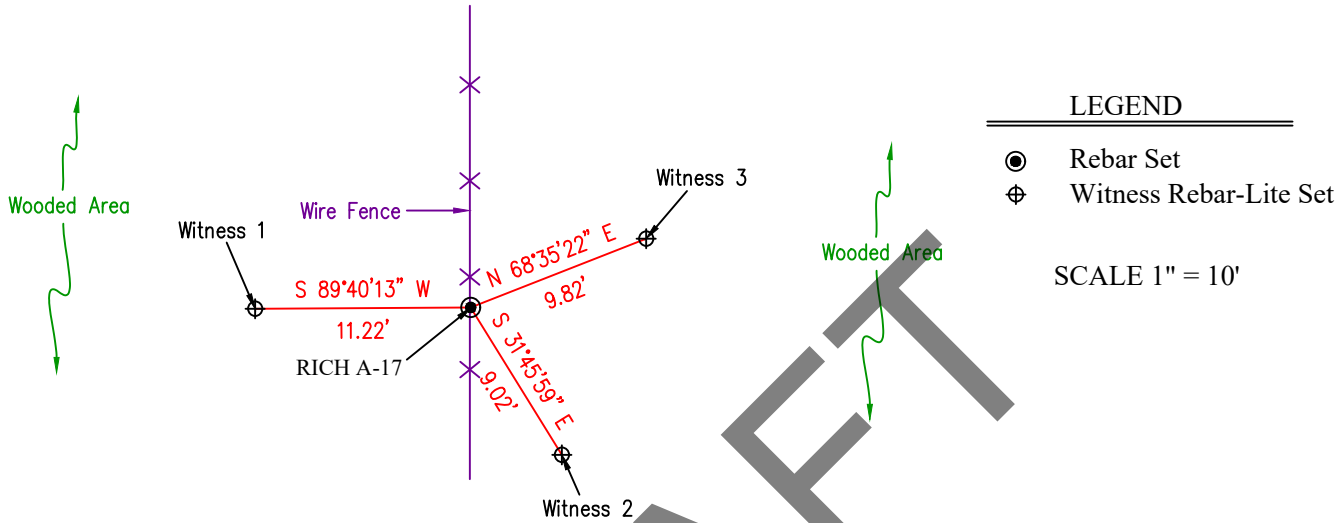
Section 30, Township 9 North, Range 2 West, 2nd P.M.

Richland Township, Monroe County, Indiana

MONUMENT: A 5/8 inch diameter rebar with a cap stamped "Deckard" was set 6 inches above grade.

GEODETIC COORDINATES: Northing: 1435093.22 Easting: 3066100.67

MONUMENT LOCATION SKETCH:



WITNESS MONUMENT TIES:

I.D.	Bearing	Distance	Witness Description
1	S 89°40'13" W	11.22'	Rebar-Lite Set 2 inches below grade
2	S 31°45'59" E	9.02'	Rebar-Lite Set 2 inches below grade
3	N 68°35'22" E	9.82'	Rebar-Lite Set 2 inches below grade

MONUMENT PRESERVATION: A t-post with a "Survey Marker Nearby" sign was placed on the East side of the monument.

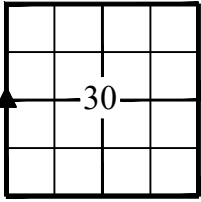
OTHER EVIDENCE: This monument is situated +/- 0.5 feet East of a wire fence running North and South.

PHOTO IDENTIFIED:

Photo Date: 3/28/2024

Looking Down





MONUMENT RECORD

Corner ID: **RICH A-19**

Quarter Section Corner

Section 30 , Township 9 North, Range 2 West, 2nd P.M.

Richland Township, Monroe County, Indiana

EXISTING SURVEY HISTORY: The West quarter corners of Sections along the West tier of Townships were not set in the Original Government Surveys. No surveys were found making reference to this corner having been set prior to this survey.

PREVIOUS CERTIFICATION: None

THEORY OF LOCATION/CORNER ANALYSIS: Having found no prior reference to this corner, this corner was calculated and set equidistant between RICH A-17 and RICH A-21 and on-line between the stones found marking the Northeast corner and the East quarter of Section 25, Township 9 North, Range 3 West.

FIELD PERSONNEL:

Field Date: 3/28/24 By: CD & OL Project #: 24-35 Notes: Field notes on file at M.C.S.O.

BASIS OF GEODETIC COORDINATES: Coordinates shown hereon were obtained from GPS observations utilizing the Indiana Real-Time Network (INCORS). Indiana West Zone, NAD83, State Plane Grid Coordinates, US Survey Feet. Geoid model ContinentalUS_NGS2018. Coordinate data was collected using a Carlson BRX7 GPS and an Carlson RT4 Data Collector. Coordinate positions are grid north (Indiana State Plane West Zone).

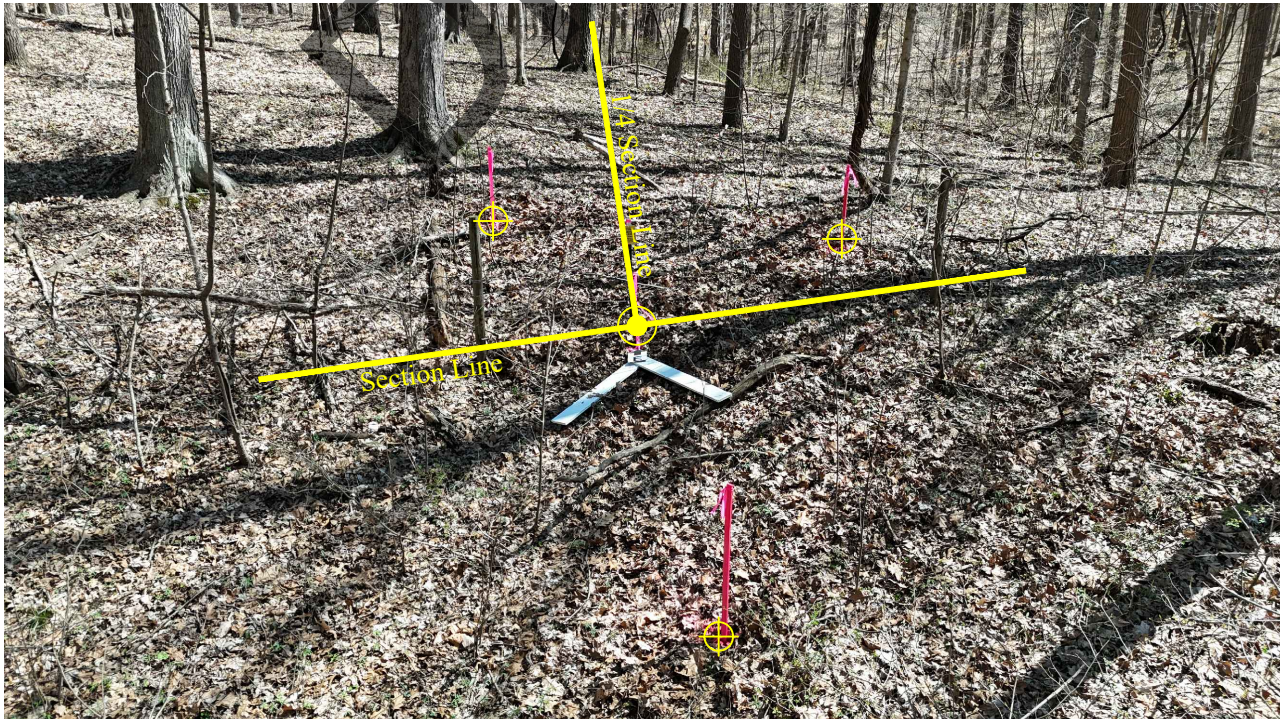
UNCERTAINTIES IN THE CORNER LOCATION DUE TO:

- Variances in the Monuments: None
- Discrepancies in the Documents: None
- Inconsistencies in the lines of Occupation: None
- Theoretical Uncertainty (Random Errors in Measurement): The relative positional accuracy of this survey is within that allowable for a Rural class survey (0.26' plus 200 PPM) as defined I.A.C. Title 865

PHOTO IDENTIFIED:

Photo Date: 3/28/2024

Looking East



MONUMENT RECORD
State of Indiana - County of Monroe

Section: 31

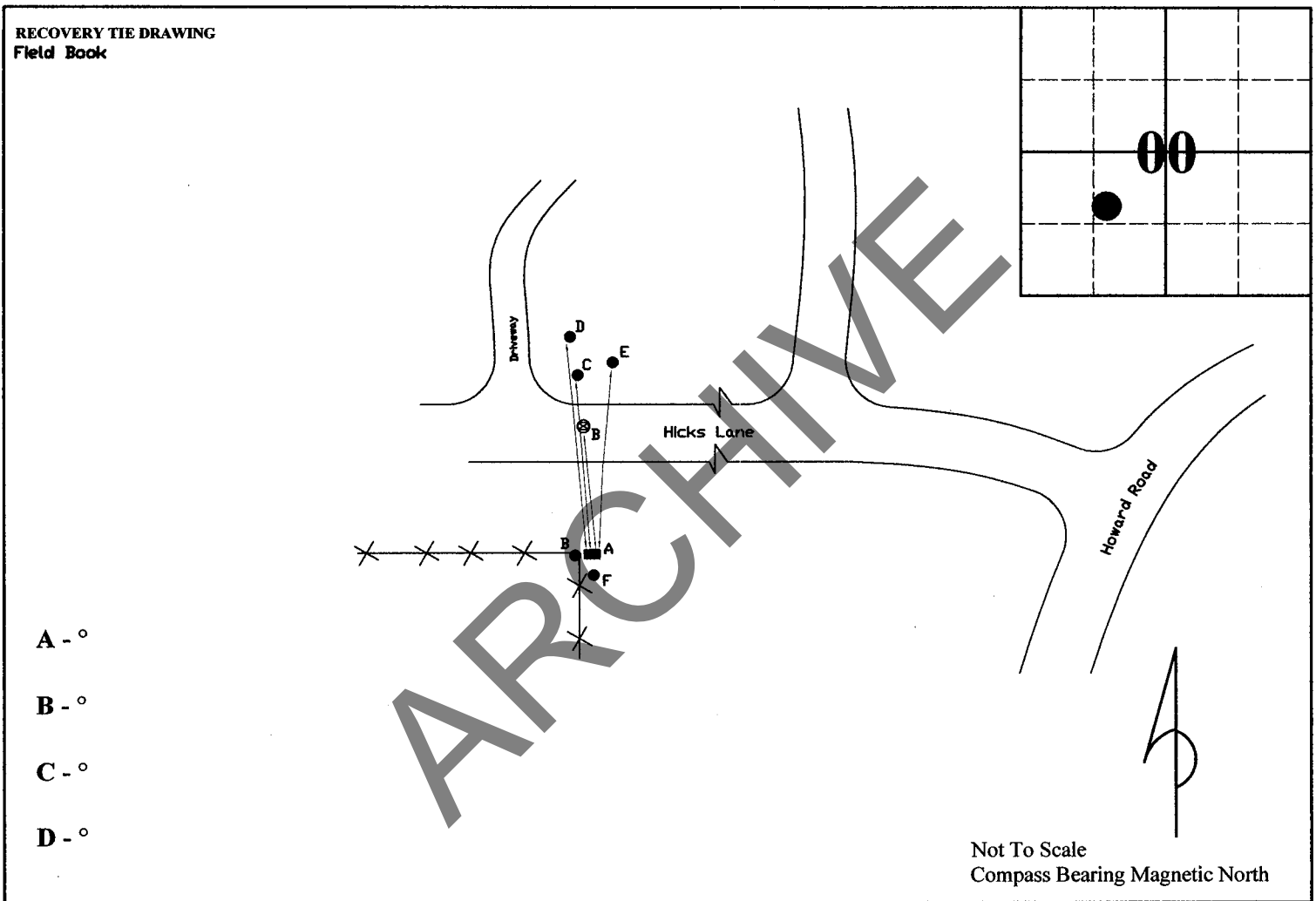
Township: 9 North

Range: 2 West

Corner ID: Rich A-21

Monument Description & Remarks: Talked with Loyd Smith

References On File:



I, Kevin P. Enright, Monroe County Surveyor, hereby certify that this document was prepared under my direction in accordance with the provisions of section 36-2-12-11 of the Indiana Code; and the above data is given under my hand and seal this ___ day of ___, 2006.

Administered by the Monroe County Surveyor Review Board

Date: _____

MONUMENT RECORD

STATE OF INDIANA - COUNTY OF MONROE

SECTION 30, TOWNSHIP 9 NORTH, RANGE 2 WEST

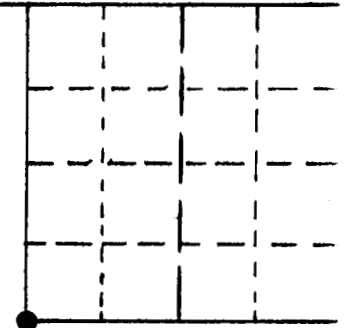
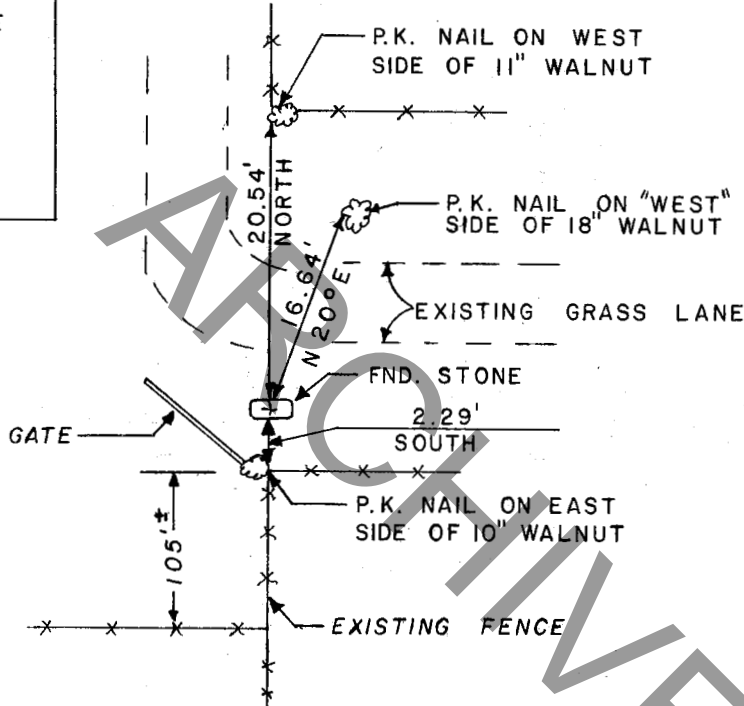
MONUMENT DESCRIPTION & REMARKS

FOUND SANDSTONE STONE CARVED WITH AN "O" ON THE OWEN CO. SIDE AND AN "M" ON THE MONROE CO. SIDE. STONE IS 0.50' X 0.70' AND 0.10' OUT OF GROUND.

CHISLED STONE



RECOVERY TIE DRAWING



(●) AT CORNER



NOT TO SCALE

STATE OF INDIANA

COUNTY OF MONROE

I, EDMUND O. FARKAS HEREBY CERTIFY THAT THIS DOCUMENT WAS PREPARED UNDER MY DIRECTION IN ACCORDANCE WITH THE PROVISIONS OF SECTION 17-3-64-4 - 17-3-64-8 OF THE INDIANA CODE, BEING ACTS OF 1965, CHAPTER 319; AND THE ABOVE DATA IS GIVEN UNDER MY HAND AND SEAL THIS 10 TH. DAY OF MAY, 1983 A.D.

SPACE RESERVED FOR RECORDING OFFICER.

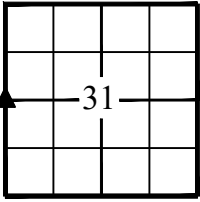
INDIANA REGISTERED LAND SURVEYOR NO. _____

OR _____

UNITED STATES GOVERNMENT AGENCY

TOWNSHIP: RICHLAND

CORNER I.D.



MONUMENT RECORD

Corner ID: **RICH A-23**

Quarter Section Corner

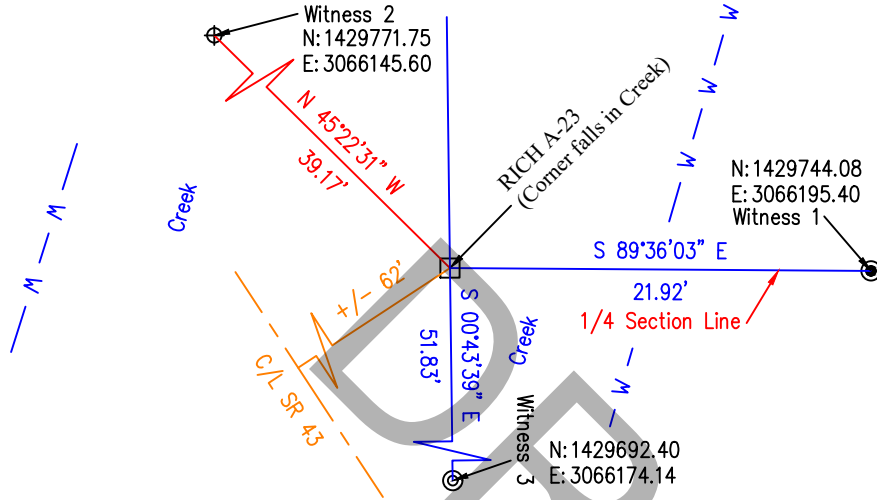
Section 31, Township 9 North, Range 2 West, 2nd P.M.

Richland Township, Monroe County, Indiana

MONUMENT: Corner falls in creek, a 5/8" rebar with "Deckard" cap was set flush with grade at a 21.92' offset to the East along the 1/4 Section line.

GEODETIC COORDINATES: Northing: 1429744.23 Easting: 3066173.48

MONUMENT LOCATION SKETCH:



LEGEND

- Rebar Set
- ⊕ Witness Rebar-Lite Set
- ⊙ Rebar Found

SCALE 1" = 10'

WITNESS MONUMENT TIES:

I.D.	Bearing	Distance	Witness Description
1	S 89°36'03" E	21.92'	5/8" Deckard" Rebar Set Flush (East bank of creek)
2	N 45°22'31" W	39.17'	Rebar-Lite Set 2 inches below grade (West bank of creek)
3	S 00°43'39" E	51.83'	5/8" Rebar Found 11" Above Grade

MONUMENT PRESERVATION: A t-post with a "Survey Marker Nearby" sign was placed on the West side of the offset monument.

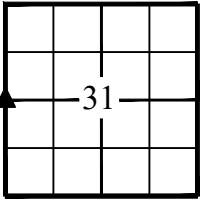
ACCESS: This monument is situated on the East side of State Road 43, where a creek runs under said road and can be accessed from said road.

PHOTO IDENTIFIED:

Photo Date: 4/12/24

Looking East





MONUMENT RECORD

Corner ID: **RICH A-23**

Quarter Section Corner

Section 31 , Township 9 North, Range 2 West, 2nd P.M.

Richland Township, Monroe County, Indiana

EXISTING SURVEY HISTORY: The West quarter corners of Sections along the West tier of Townships were not set in the Original Government Surveys. No surveys were found making reference to this corner having been set prior to this survey.

PREVIOUS CERTIFICATION: None

THEORY OF LOCATION/CORNER ANALYSIS: Having found no prior reference to this corner, this corner was calculated and set equidistant between RICH A-21 and TWP COR IX and on-line between the rebar found marking the East quarter corner of Section 36, Township 9 North, Range 3 West and the rebar found marking the Northeast corner of Section 36, Township 9 North, Range 3 West.

FIELD PERSONNEL:

Field Date: 4/12/24 By: CD & OL Project #: 24-35 Notes: Field notes on file at M.C.S.O.

BASIS OF GEODETIC COORDINATES: Coordinates shown hereon were obtained from GPS observations utilizing the Indiana Real-Time Network (INCORS). Indiana West Zone, NAD83, State Plane Grid Coordinates, US Survey Feet. Geoid model ContinentalUS_NGS2018. Coordinate data was collected using a Carlson BRX7 GPS and an Carlson RT4 Data Collector. Coordinate positions are grid north (Indiana State Plane West Zone).

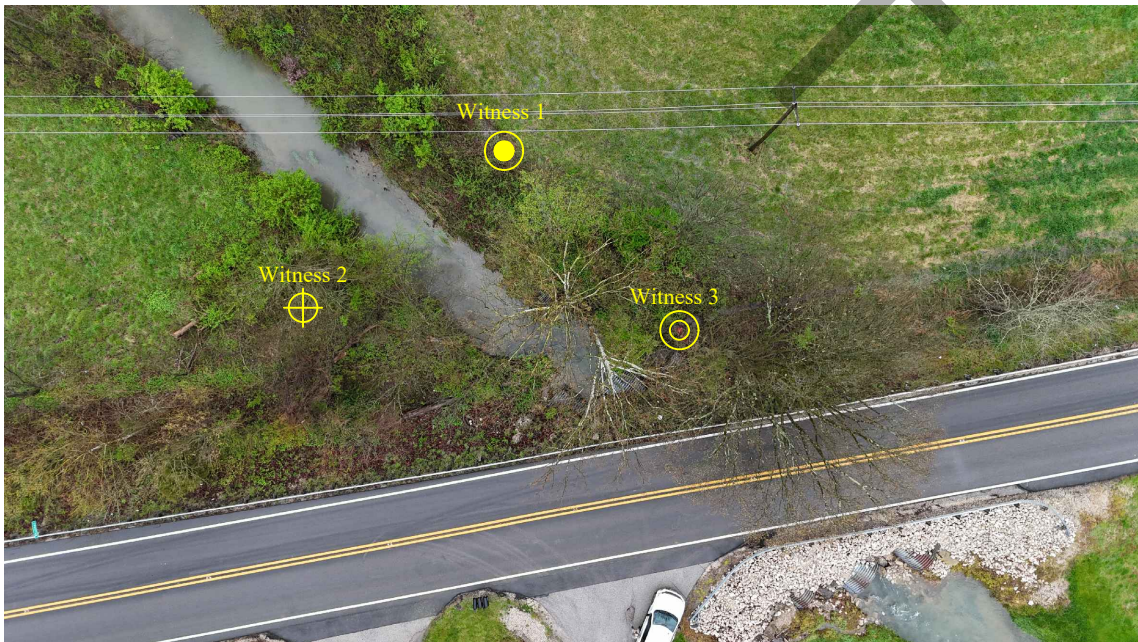
UNCERTAINTIES IN THE CORNER LOCATION DUE TO:

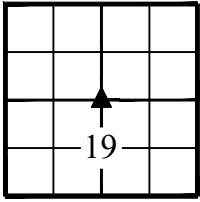
- Variances in the Monuments: None
- Discrepancies in the Documents: None
- Inconsistencies in the lines of Occupation: None
- Theoretical Uncertainty (Random Errors in Measurement): The relative positional accuracy of this survey is within that allowable for a Rural class survey (0.26' plus 200 PPM) as defined I.A.C. Title 865

PHOTO IDENTIFIED:

Photo Date: 4/12/24

Looking Down/East





MONUMENT RECORD

Corner ID: **RICH C-15**

Center Section Corner

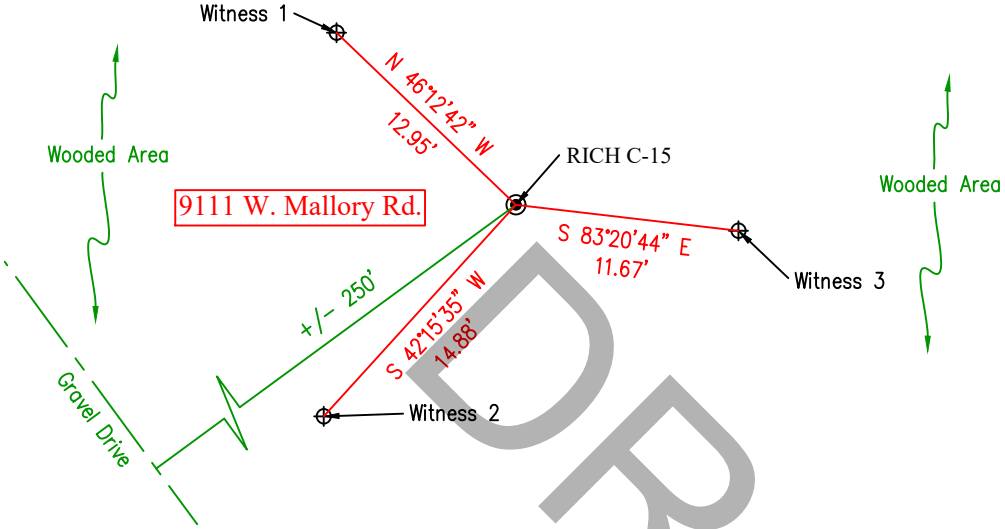
Section 19, Township 9 North, Range 2 West, 2nd P.M.

Richland Township, Monroe County, Indiana

MONUMENT: A 5/8 inch diameter rebar with a cap stamped "Deckard" was set 6 inches above grade.

GEODETIC COORDINATES: Northing: 1440412.63 Easting: 3067804.80

MONUMENT LOCATION SKETCH:



LEGEND

- Rebar Set
- ⊕ Witness Rebar-Lite Set

SCALE 1" = 10'

WITNESS MONUMENT TIES:

I.D.	Bearing	Distance	Witness Description
1	N 46°12'42" W	12.95'	Rebar-Lite Set 2 inches below grade
2	S 42°15'35" W	14.88'	Rebar-Lite Set 2 inches below grade
3	S 83°20'44" E	11.67'	Rebar-Lite Set 2 inches below grade

MONUMENT PRESERVATION: A t-post with a "Survey Marker Nearby" sign was placed on the East side of the monument.

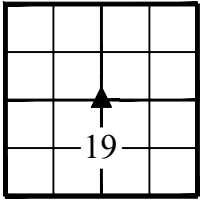
ACCESS: At the time of this survey, this corner can be accessed from the gravel drive located at 9111 W. Mallory Road.

PHOTO IDENTIFIED:

Photo Date: 3/28/2024

Looking Down





MONUMENT RECORD

Corner ID: **RICH C-15**

Center Section Corner

Section 19, Township 9 North, Range 2 West, 2nd P.M.

Richland Township, Monroe County, Indiana

EXISTING SURVEY HISTORY: The center of Sections were not set in the Original Government Surveys. Generally, it was left to the County Surveyor's following the Original Government Surveys to subdivide the Sections in to quarters, quarter-quarters, and sometimes further. No survey was found making reference to this corner having been set prior to this survey.

PREVIOUS CERTIFICATION: None

THEORY OF LOCATION/CORNER ANALYSIS: Finding no record of this corner having been set in a prior survey, this corner was set by the conventional method of intersecting opposite quarter corners; RICH E-15 to RICH A-15 intersected with RICH C-13 to RICH C-17.

FIELD PERSONNEL:

Field Date: 3/28/24 By: CD & OL Project #: 24-35 Notes: Field notes on file at M.C.S.O.

BASIS OF GEODETIC COORDINATES: Coordinates shown hereon were obtained from GPS observations utilizing the Indiana Real-Time Network (INCORS). Indiana West Zone, NAD83, State Plane Grid Coordinates, US Survey Feet. Geoid model ContinentalUS_NGS2018. Coordinate data was collected using a Carlson BRX7 GPS and an Carlson RT4 Data Collector. Coordinate positions are grid north (Indiana State Plane West Zone).

UNCERTAINTIES IN THE CORNER LOCATION DUE TO:

- Variances in the Monuments: None
- Discrepancies in the Documents: None
- Inconsistencies in the lines of Occupation: None
- Theoretical Uncertainty (Random Errors in Measurement): The relative positional accuracy of this survey is within that allowable for a Rural class survey (0.26' plus 200 PPM) as defined I.A.C. Title 865

PHOTO IDENTIFIED:

Photo Date: 3/27/2024

Looking East



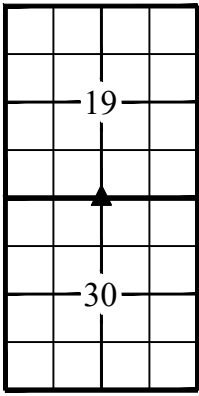
MONUMENT RECORD

Corner ID: **RICH C-17**

Quarter Section Corner

Sections 19 & 30, Township 9 North, Range 2 West, 2nd P.M.

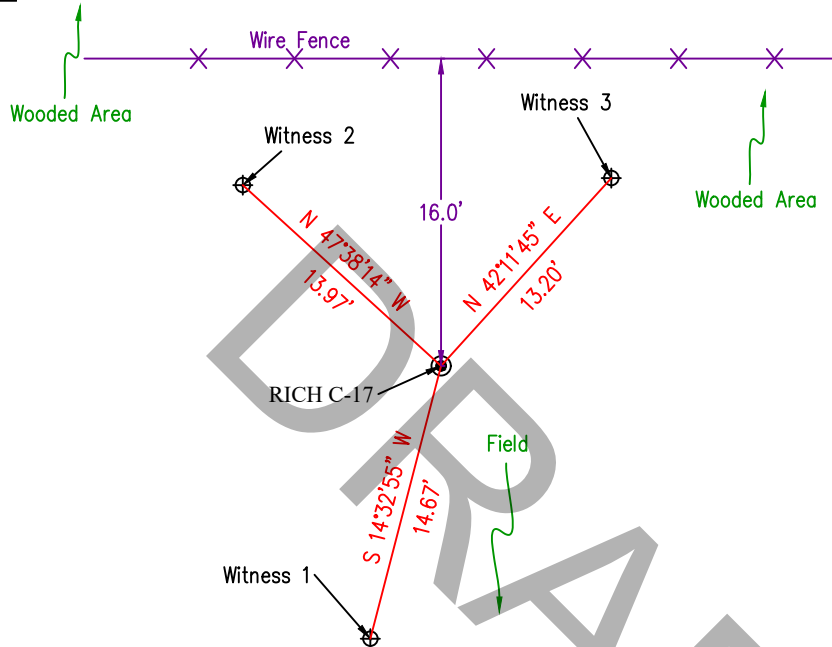
Richland Township, Monroe County, Indiana



MONUMENT: A 5/8 inch diameter rebar with a cap stamped "Deckard" was set 6" above grade.

GEODETIC COORDINATES: Northing: 1437733.54 Easting: 3067823.32

MONUMENT LOCATION SKETCH:



LEGEND

- Rebar Set
- ⊕ Witness Rebar-Lite Set

SCALE 1" = 10'

WITNESS MONUMENT TIES:

I.D.	Bearing	Distance	Witness Description
1	S 14°32'55" W	14.67'	Rebar-Lite Set 2 inches below grade
2	N 47°38'14" W	13.97'	Rebar-Lite Set 2 inches below grade
3	N 42°11'45" E	13.20'	Rebar-Lite Set 2 inches below grade

MONUMENT PRESERVATION: A t-post with a "Survey Marker Nearby" sign was placed on the East side of the monument.

OTHER EVIDENCE: None.

Looking Down

PHOTO IDENTIFIED:

Photo Date: 3/28/2024



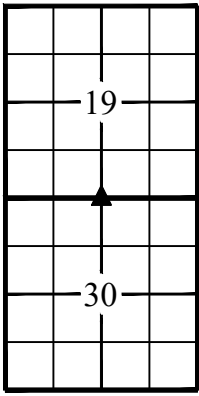
MONUMENT RECORD

Corner ID: **RICH C-17**

Quarter Section Corner

Sections 19 & 30, Township 9 North, Range 2 West, 2nd P.M.

Richland Township, Monroe County, Indiana



EXISTING SURVEY HISTORY:

Post - Original Government Survey, 1811-1815

Calculated - Bernard A. Guerrettaz II, April 18th, 2008, Instr. 2024002549

PREVIOUS CERTIFICATION: None

THEORY OF LOCATION/CORNER ANALYSIS: Following the Original Government Surveys, no surveys were found making reference to a monument marking this corner. The 2008 Guerrettaz survey indicates a position calculated at this corner. The area was searched and no monument was recovered. This corner was calculated and set using a single proportionate measure between RICH E-17 and RICH A-17 and on-line between RICH A-17 and an iron pipe 1795.40' to the East that was held as a point on the South line of Section 19. Old East-West running wire fence was found +/- 16' North of this position. There may be unwritten rights associated with that fence.

FIELD PERSONNEL:

Field Date: 3/28/24

By: CD & OL

Project #: 24-35

Notes: Field notes on file at M.C.S.O.

BASIS OF GEODETIC COORDINATES: Coordinates shown hereon were obtained from GPS observations utilizing the Indiana Real-Time Network (INCORS). Indiana West Zone, NAD83, State Plane Grid Coordinates, US Survey Feet. Geoid model ContinentalUS_NGS2018. Coordinate data was collected using a Carlson BRX7 GPS and an Carlson RT4 Data Collector. Coordinate positions are grid north (Indiana State Plane West Zone).

UNCERTAINTIES IN THE CORNER LOCATION DUE TO:

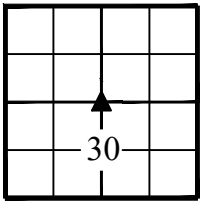
- Variances in the Monuments: None
- Discrepancies in the Documents: None
- Inconsistencies in the lines of Occupation: A wire fence was found running East-West +/- 16 feet North of the monument set in this survey.
- Theoretical Uncertainty (Random Errors in Measurement): The relative positional accuracy of this survey is within that allowable for a Rural class survey (0.26' plus 200 PPM) as defined I.A.C. Title 865

PHOTO IDENTIFIED:

Photo Date: 3/28/2024

Looking North





MONUMENT RECORD

Corner ID: **RICH C-19**

Center Section Corner

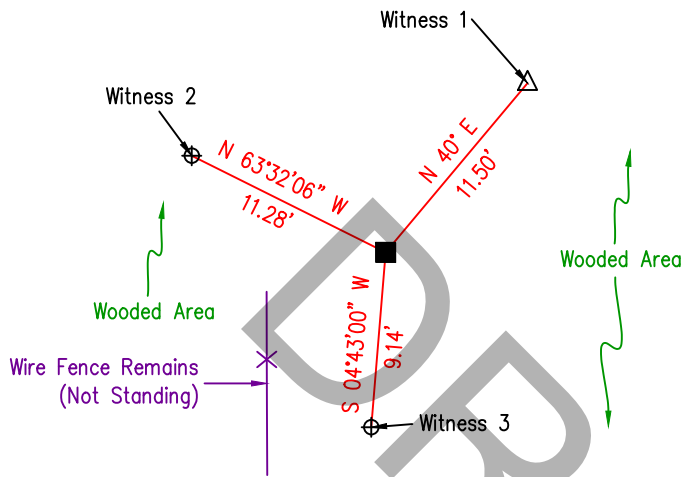
Section 30, Township 9 North, Range 2 West, 2nd P.M.

Richland Township, Monroe County, Indiana

MONUMENT: A 7"x7" stone with a scribed "X" was found 3" above grade marking the center of Section 30, Township 9 North, Range 2 West.

GEODETIC COORDINATES: Northing: 1435074.59 Easting: 3067898.34

MONUMENT LOCATION SKETCH:



LEGEND

- ⊙ Rebar Set
- ⊕ Witness Rebar-Lite Set
- △ Mag Nail Found

SCALE 1" = 10'



WITNESS MONUMENT TIES:

I.D.	Bearing	Distance	Witness Description
1	N 40° E	11.50'	Mag Nail found 2 inches above grade in a 25 inch Black Cherry
2	N 63°32'06" W	11.28'	Rebar-Lite Set 2 inches below grade
3	S 04°43'00" W	9.14'	Rebar-Lite Set 2 inches below grade

MONUMENT PRESERVATION: A t-post with a "Survey Marker Nearby" sign was placed on the South side of the monument.

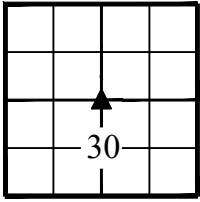
ACCESS: At the time of this survey, this corner can be accessed from 9410 W. Howard Road.

PHOTO IDENTIFIED:

Photo Date: 3/29/2024

Looking Down





MONUMENT RECORD

Corner ID: **RICH C-19**

Center Section Corner

Section 30, Township 9 North, Range 2 West, 2nd P.M.
Richland Township, Monroe County, Indiana

EXISTING SURVEY HISTORY:

- Stone Set (assumed) - Elmer E. Buskirk, April 16th-19th, 1894, Legal Survey Book 2, Page 525
- Stone Found - Eric L. Deckard, September 25th, 2006, Instr. 2006020051
- Stone Found - Bernard A. Guerrettaz II, April 18th, 2008, Instr. 2024002549
- Stone Found - June 14th, 2011, Monroe County Tie Sheet Corner I.D. "RICH C-19"
- Stone Found - Eric L. Deckard, March 29th, 2021, 202101350

PREVIOUS CERTIFICATION: This corner was referenced by Monroe County Surveyor Kevin P. Enright on June 14th, 2011.

THEORY OF LOCATION/CORNER ANALYSIS: The center of Sections were not set in the Original Government Surveys. Generally, it was left to the County Surveyor's following the Original Government Surveys to subdivide the Sections in to quarters, quarter-quarters, and sometimes further. This stone is believed to have been set in 1894 by Elmer E. Buskirk. Buskirk does not specifically state that a stone was set in his survey. This stone is consistent with other monuments found in the area that are believed to have been set in the 1894 survey. This stone was accepted and held with no associated uncertainty.

FIELD PERSONNEL:

Field Date: 3/29/24 By: CD & OL Project #: 24-35 Notes: Field notes on file at M.C.S.O.

BASIS OF GEODETIC COORDINATES: Coordinates shown hereon were obtained from GPS observations utilizing the Indiana Real-Time Network (INCORS). Indiana West Zone, NAD83, State Plane Grid Coordinates, US Survey Feet. Geoid model ContinentalUS_NGS2018. Coordinate data was collected using a Carlson BRX7 GPS and an Carlson RT4 Data Collector. Coordinate positions are grid north (Indiana State Plane West Zone).

UNCERTAINTIES IN THE CORNER LOCATION DUE TO:

- Variances in the Monuments: None
- Discrepancies in the Documents: None
- Inconsistencies in the lines of Occupation: None
- Theoretical Uncertainty (Random Errors in Measurement): The relative positional accuracy of this survey is within that allowable for a Rural class survey (0.26' plus 200 PPM) as defined I.A.C. Title 865

PHOTO IDENTIFIED:

Photo Date: 3/29/2024

Looking South



MONUMENT RECORD
State of Indiana - County of Monroe

Section: 30

Township: 9 North

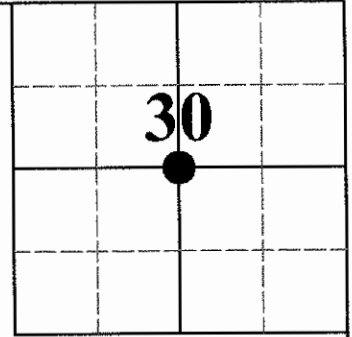
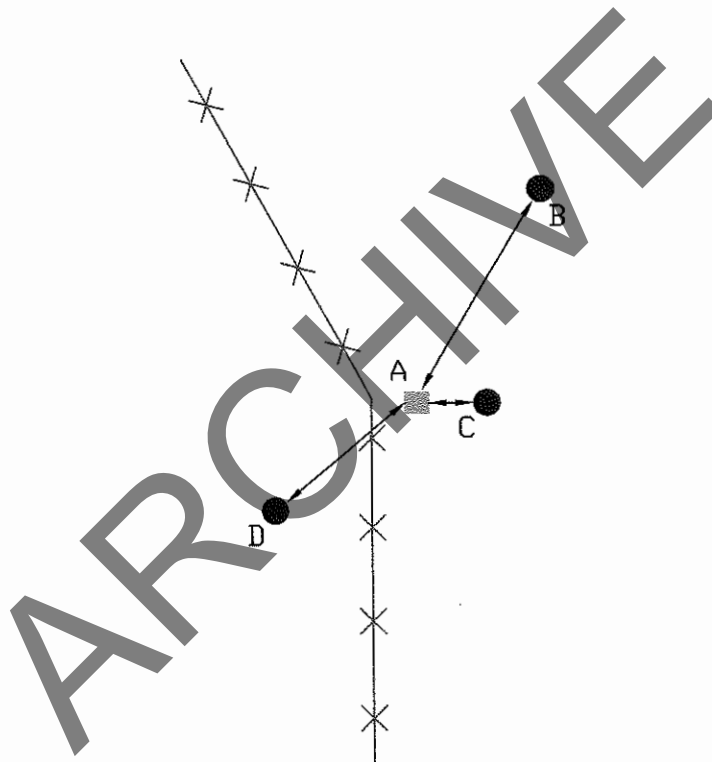
Range: 2 West

Corner ID: Rich C-19

Monument Description & Remarks: Sandstone with "X", length 0.55ft, width 0.55ft, height 0.30ft. Survey Sign 2ft above ground at pt. C

References On File: Legal Survey Book 2 page 525, MCS Elmer Buskirk (1894) and Eric Lee Deckard survey, Cooke (2006), on file in Surveyor Office

RECOVERY TIE DRAWING
Field Book 45 Page No. 45



- A - Sandstone with "X"
- B - N 40° E 11.48' to MAG nail in 7" Black Cherry
- C - S 88° E 1.10' to Survey Sign on 1/2" rebar post
- D - S 41° W 8.43' to MAG nail in 5" Black Walnut



Not To Scale
Compass Bearing Magnetic North

I, Kevin P. Enright, Monroe County Surveyor, hereby certify that this document was prepared under my direction in accordance with the provisions of section 36-2-12 of the Indiana Code; and the above data is given under my hand and seal this 3rd day of June, 2011.

Kevin P. Enright



Administered by the Monroe County Surveyor Review Board

Date: 6/14/2011

8/20/2024

Page 20 of 48

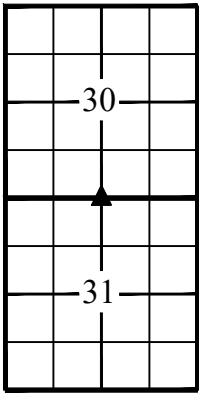
Drawn by: T.E.R Print date: June 06, 2011

MONUMENT RECORD

Corner ID: **RICH C-21**

Quarter Section Corner

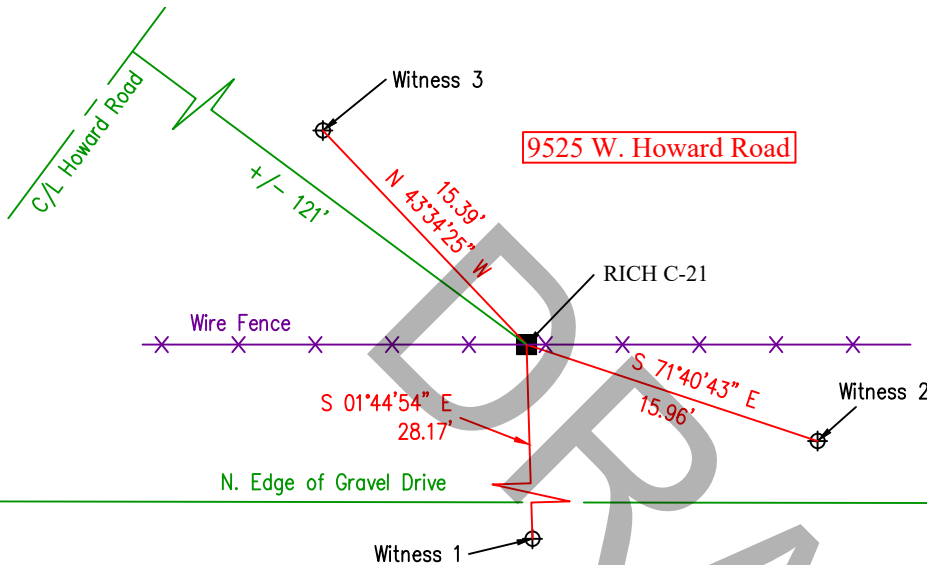
Sections 30 & 31, Township 9 North, Range 2 West, 2nd P.M.
Richland Township, Monroe County, Indiana



MONUMENT: A 7"x5" stone with a scribed "X" was found 5" below grade.

GEODETIC COORDINATES: Northing: 1432426.46 Easting: 3067922.73

MONUMENT LOCATION SKETCH:



LEGEND

- Witness Rebar-Lite Set
- Stone Found

SCALE 1" = 10'

WITNESS MONUMENT TIES:

I.D.	Bearing	Distance	Witness Description
1	S 01°44'54" E	28.17'	Rebar-Lite Set 2 inches below grade
2	S 71°40'43" E	15.96'	Rebar-Lite Set 2 inches below grade
3	N 43°34'25" W	15.39'	Rebar-Lite Set 2 inches below grade

MONUMENT PRESERVATION: A t-post with a "Survey Marker Nearby" sign was placed on the North side of the monument.

ACCESS: This monument is situated +/- 8 feet North of the North edge of a privately owned gravel drive which runs East off of Howard Road. At the time of this survey, this corner can be accessed using said gravel drive.

Looking Down

PHOTO IDENTIFIED:

Photo Date: 3/25/2024

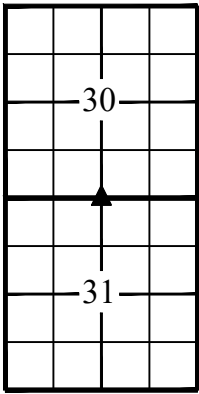


MONUMENT RECORD

Corner ID: **RICH C-21**

Quarter Section Corner

Sections 30 & 31, Township 9 North, Range 2 West, 2nd P.M.
Richland Township, Monroe County, Indiana



EXISTING SURVEY HISTORY:

- Post (assumed) - Original Government Survey, 1811-1815
- Stone Set - Elmer E. Buskirk, April 16th-19th, 1894, Legal Survey Book 2, Page 525
- Stone Found - Lee Utt, October 25th, 1976, Utt's files at Deckard Land Surveying
- Stone Found - Lee Utt, July 18th, 1974, Utt's files at Deckard Land Surveying
- Stone Found - May 10th, 1983, Monroe County Tie Sheet Corner I.D. "RICH C-21"
- Stone Found - Lee Utt, June 13th, 1996, Utt's files at Deckard Land Surveying
- Stone Found - Ben E. Bledsoe, February 11th, 2015, Instr. 2015004240
- Stone Found - Eric L. Deckard, October 17th, 2016, Instr. 2017000374

PREVIOUS CERTIFICATION: This stone was referenced by Monroe County Surveyor Edmund O. Farkas on May 10th, 1983.

THEORY OF LOCATION/CORNER ANALYSIS: This stone is believed to have been set in 1894 by Elmer E. Buskirk and has been held in every subsequent survey in the area that was found. This stone was accepted and held with no associated uncertainty.

FIELD PERSONNEL:

Field Date: 3/25/24 By: CD & JR Project #: 24-35 Notes: Field notes on file at M.C.S.O.

BASIS OF GEODETIC COORDINATES: Coordinates shown hereon were obtained from GPS observations utilizing the Indiana Real-Time Network (INCORS). Indiana West Zone, NAD83, State Plane Grid Coordinates, US Survey Feet. Geoid model ContinentalUS_NGS2018. Coordinate data was collected using a Carlson BRX7 GPS and an Carlson RT4 Data Collector. Coordinate positions are grid north (Indiana State Plane West Zone).

UNCERTAINTIES IN THE CORNER LOCATION DUE TO:

- Variances in the Monuments: None
- Discrepancies in the Documents: None
- Inconsistencies in the lines of Occupation: None
- Theoretical Uncertainty (Random Errors in Measurement): The relative positional accuracy of this survey is within that allowable for a Rural class survey (0.26' plus 200 PPM) as defined I.A.C. Title 865

PHOTO IDENTIFIED:

Photo Date: 3/25/2024

Looking North



MONUMENT RECORD

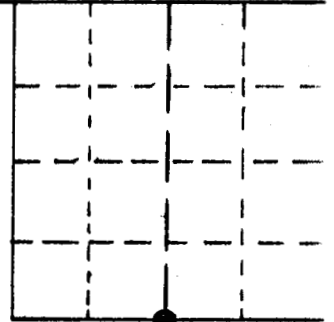
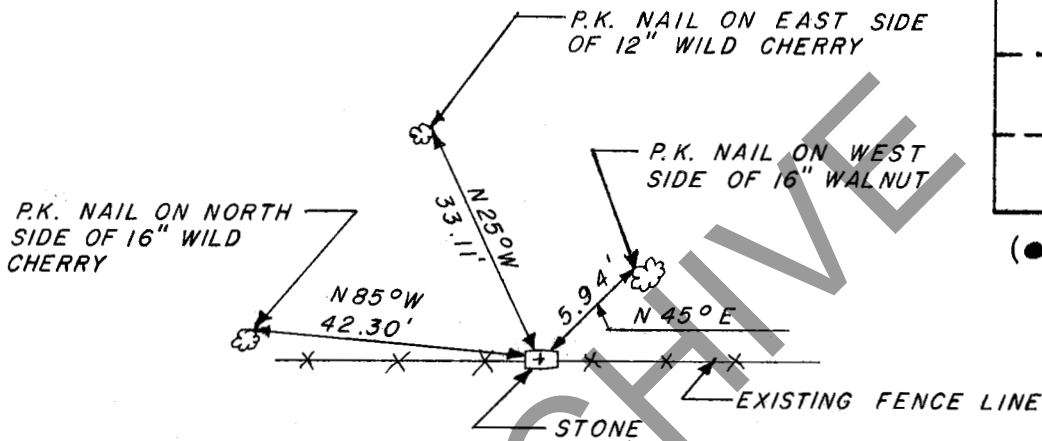
STATE OF INDIANA - COUNTY OF MONROE

SECTION 30, TOWNSHIP 9 NORTH, RANGE 2 WEST

MONUMENT DESCRIPTION & REMARKS

FOUND SANDSTONE STONE WITH "X" 0.40' x 0.60' AND 0.30' HIGH
IN EXISTING FENCE LINE

RECOVERY TIE DRAWING



(•) AT CORNER



NOT TO SCALE

STATE OF INDIANA

COUNTY OF MONROE

I, EDMUND O. FARKAS HEREBY CERTIFY THAT THIS DOCUMENT WAS PREPARED UNDER MY DIRECTION IN ACCORDANCE WITH THE PROVISIONS OF SECTION 17-3-64-4 - 17-3-64-8 OF THE INDIANA CODE, BEING ACTS OF 1965, CHAPTER 319; AND THE ABOVE DATA IS GIVEN UNDER MY HAND AND SEAL THIS 10 TH. DAY OF MAY, 1983 A.D.

SPACE RESERVED FOR RECORDING OFFICER.

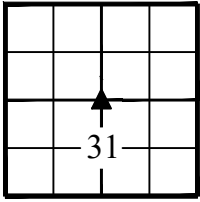
INDIANA REGISTERED LAND SURVEYOR NO. _____

OR _____

UNITED STATES GOVERNMENT AGENCY

TOWNSHIP: RICHLAND

CORNER I.D.



MONUMENT RECORD

Corner ID: **RICH C-23**

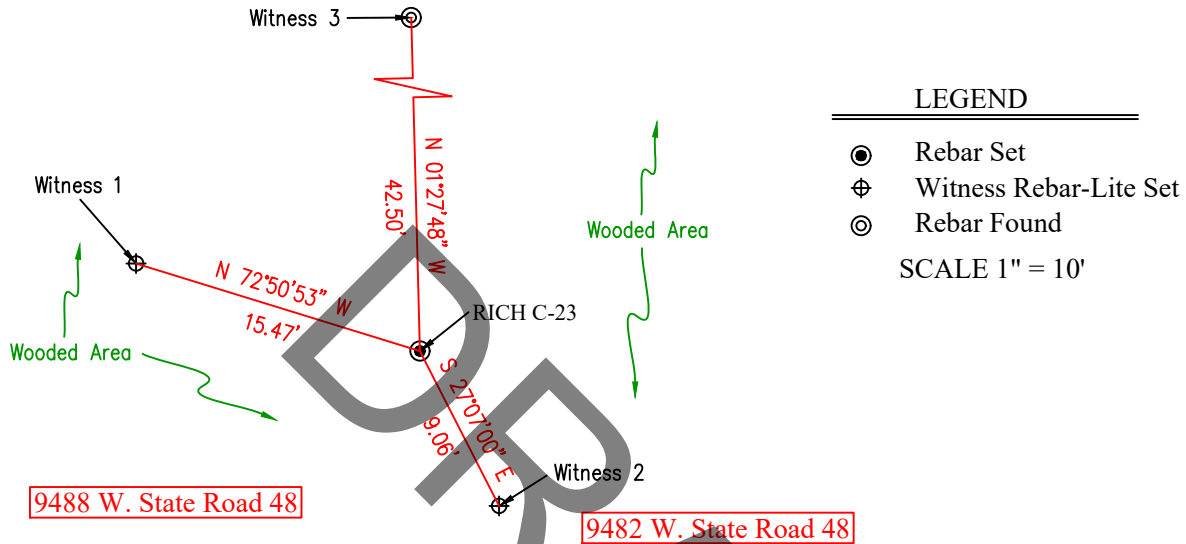
Center Section Corner

Section 31, Township 9 North, Range 2 West, 2nd P.M.
Richland Township, Monroe County, Indiana

MONUMENT: A 5/8" diameter rebar with a cap stamped "Deckard" was set 4" above grade.

GEODETIC COORDINATES: Northing: 1429731.48 Easting: 3068002.99

MONUMENT LOCATION SKETCH:



WITNESS MONUMENT TIES:

I.D.	Bearing	Distance	Witness Description
1	N 72°50'53" W	15.47'	Rebar-Lite Set 2 inches below grade
2	S 27°07'00" E	9.06'	Rebar-Lite Set 2 inches below grade
3	N 01°27'48" W	42.50'	5/8 inch rebar with cap stamped "Deckard" 6 inches above grade

MONUMENT PRESERVATION: A t-post with a "Survey Marker Nearby" sign was placed on the North side of the monument.

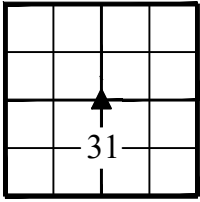
ACCESS: At the time of this survey, this rebar could be accessed from 9488 & 9482 W. State Road 48

Looking Down

PHOTO IDENTIFIED:

Photo Date: 3/29/2024





MONUMENT RECORD

Corner ID: **RICH C-23**

Center Section Corner

Section 31, Township 9 North, Range 2 West, 2nd P.M.
Richland Township, Monroe County, Indiana

EXISTING SURVEY HISTORY: The center of Sections were not set in the Original Government Surveys. Generally, it was left to the County Surveyor's following the Original Government Surveys to subdivide the Sections in to quarters, quarter-quarters, and sometimes further. No survey was found making reference to this corner having been set prior to this survey.

PREVIOUS CERTIFICATION: None

THEORY OF LOCATION/CORNER ANALYSIS: Finding no record of this corner having been set in a prior survey, this corner was set by the conventional method of intersecting opposite quarter corners; RICH E-23 to RICH A-23 intersected with RICH C-21 to RICH C-25.

FIELD PERSONNEL:

Field Date: 3/29/24 By: CD & OL Project #: 24-35 Notes: Field notes on file at M.C.S.O.

BASIS OF GEODETIC COORDINATES: Coordinates shown hereon were obtained from GPS observations utilizing the Indiana Real-Time Network (INCORS). Indiana West Zone, NAD83, State Plane Grid Coordinates, US Survey Feet. Geoid model ContinentalUS_NGS2018. Coordinate data was collected using a Carlson BRX7 GPS and an Carlson RT4 Data Collector. Coordinate positions are grid north (Indiana State Plane West Zone).

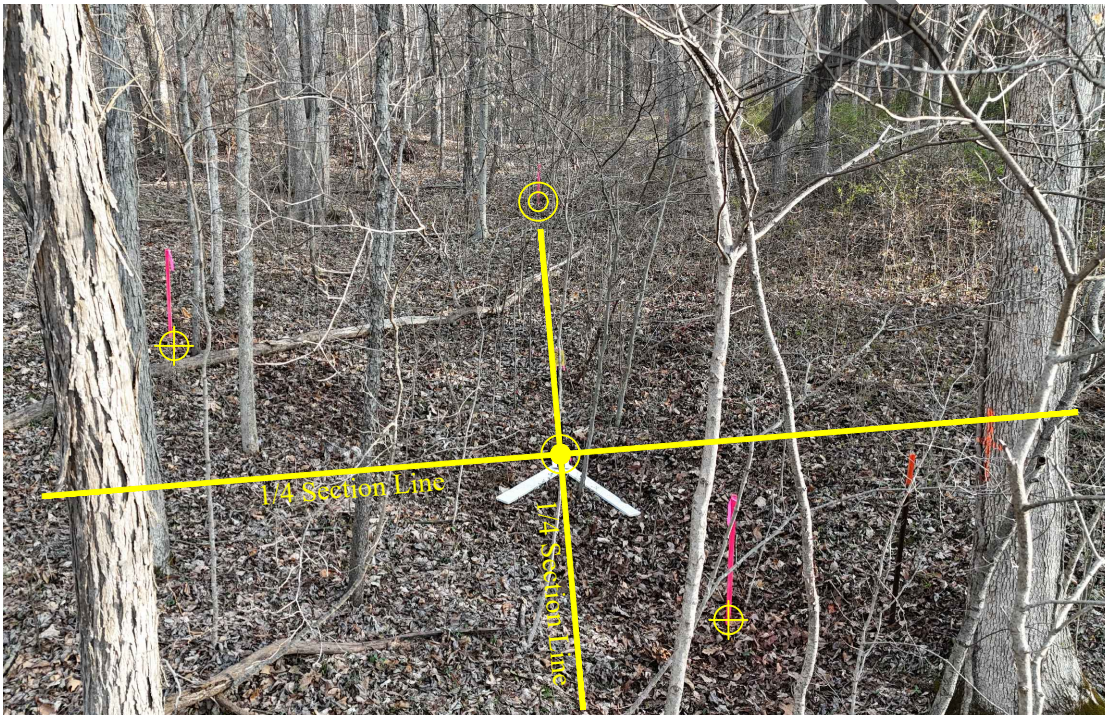
UNCERTAINTIES IN THE CORNER LOCATION DUE TO:

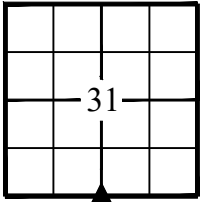
- Variances in the Monuments: None
- Discrepancies in the Documents: None
- Inconsistencies in the lines of Occupation: None
- Theoretical Uncertainty (Random Errors in Measurement): The relative positional accuracy of this survey is within that allowable for a Rural class survey (0.26' plus 200 PPM) as defined I.A.C. Title 865

PHOTO IDENTIFIED:

Photo Date: 3/29/2024

Looking North





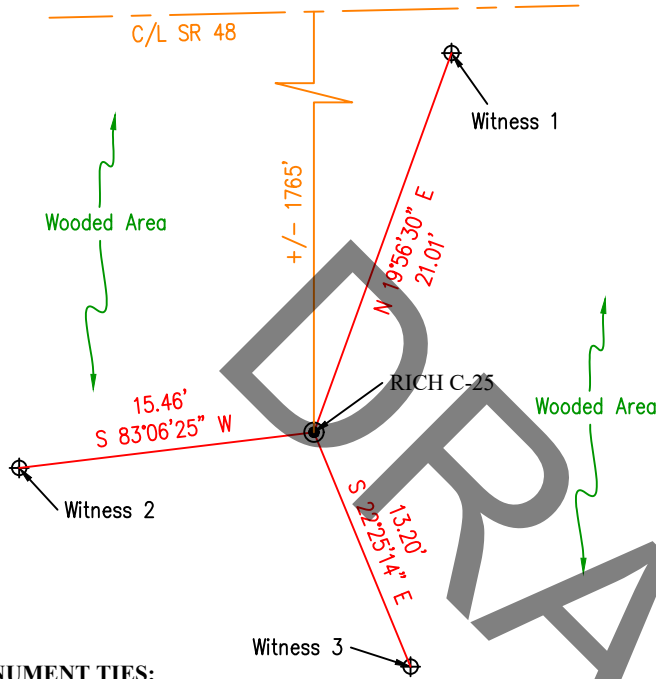
MONUMENT RECORD

Corner ID: **RICH C-25**
 Quarter Section Corner
 Section 31, Township 9 North, Range 2 West, 2nd P.M.
 Richland Township, Monroe County, Indiana

MONUMENT: A 5/8" diameter rebar with a cap stamped "Deckard" was set 6" above grade.

GEODETIC COORDINATES: Northing: 1427045.44 Easting: 3068082.99

MONUMENT LOCATION SKETCH:



LEGEND

- ⊙ Rebar Set
- ⊕ Witness Rebar-Lite Set
- ⊙ Rebar Found

SCALE 1" = 10'

WITNESS MONUMENT TIES:

I.D.	Bearing	Distance	Witness Description
1	N 19°56'30" E	20.01'	Rebar-Lite Set 2 inches below grade
2	S 83°06'25" W	15.46'	Rebar-Lite Set 2 inches below grade
3	S 22°25'14" E	13.20'	Rebar-Lite Set 2 inches below grade

MONUMENT PRESERVATION: A t-post with a "Survey Marker Nearby" sign was placed on the East side of the monument.

OTHER EVIDENCE: None.

Looking Down



PHOTO IDENTIFIED:

Photo Date: 3/29/2024

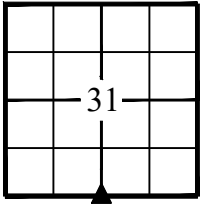
MONUMENT RECORD

Corner ID: **RICH C-25**

Quarter Section Corner

Section 31, Township 9 North, Range 2 West, 2nd P.M.

Richland Township, Monroe County, Indiana



EXISTING SURVEY HISTORY: Post (assumed) - Original Government Survey, 1811-1815

PREVIOUS CERTIFICATION: None

THEORY OF LOCATION/CORNER ANALYSIS: It is believed there may have been some discrepancy in the interpretation of the Original Government Notes as to the fallings along the South line of Section 31, Township 9 North, Range 2 West. Records were found showing the fallings of the South line to be evenly split at 40 chains and 40 chains. Upon examining the Original Government Notes it is believed that there is a discrepancy of 10 chains between the Original Government Notes and later records. The Original Government Notes read as follows:

-From the Southeast corner of Section 31, T9N, R2W, a distance of 40 chains was ran West to a post at the South quarter corner of Section 31, T9N, R2W.

-From the South quarter corner of Section 31, T9N, R2W a distance of 40 chains was ran West to a temporary post at the Southwest corner of Section 31, T9N, R2W (Township Corner).

-From the Southwest corner of Section 6, T8N, R2W a distance of 40 chains was ran North to a post at the West quarter corner of Section 6 T8N, R2W.

- From the West quarter corner of Section 6, T8N, R2W a distance of 38 chains was ran North to a point 10 chains East of the temporary post previously set, and a post was set at this location being the Township Corner.

This makes the fallings of the South line of Section 31, Township 9 North, Range 2 West 40 chains along the South line of the Southeast quarter and 30 chains along the South line of the Southwest quarter.

After the Original Government Surveys, no record of this corner was found. It was found in Lee Utt's project files (located at Deckard Land Surveying) that Utt had established the North-South running quarter Section line in Section 31 on the North side of State Road 48 in a series of several surveys. He later projected it South to intersect the South line of Section 31, calculating the South quarter corner of Section 31. He then measured 1320' East along the South line of Section 31 and set the Southeast corner of the West half of the Southeast quarter of Section 31. The Southeast corner of the West half of the Southeast quarter of Section 31 was recovered in this survey and 1320.00' was measured West along the South line of Section 31 to set the South quarter corner of Section 31. Monuments found along the North-South running quarter Section line in Section 31 fit well with this location. This location is in harmony with the prior surveys that make reference to the North-South running quarter Section line in Section 31 situated North of State Road 48 and does not appear to create conflict South of State Road 48. The location calculated by projecting a line from the North quarter corner of Section 31 South through the furthest South monument recovered on the North-South running quarter Section line in Section 31 to the South line of Section 31 falls 0.35' from the location of the monument set in this survey.

FIELD PERSONNEL:

Field Date: 3/29/24

By: CD & OL

Project #: 24-35

Notes: Field notes on file at M.C.S.O.

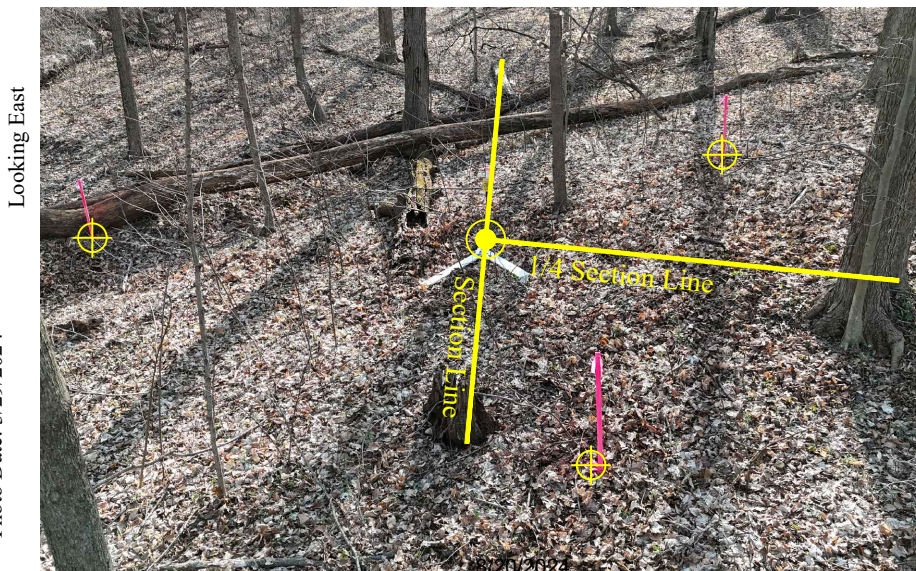
BASIS OF GEODETIC COORDINATES: Coordinates shown hereon were obtained from GPS observations utilizing the Indiana Real-Time Network (INCORS). Indiana West Zone, NAD83, State Plane Grid Coordinates, US Survey Feet. Geoid model ContinentalUS_NGS2018. Coordinate data was collected using a Carlson BRX7 GPS and an Carlson RT4 Data Collector. Coordinate positions are grid north (Indiana State Plane West Zone).

UNCERTAINTIES IN THE CORNER LOCATION DUE TO:

- Variances in the Monuments: None
- Discrepancies in the Documents: See "Corner Analysis" for discussion of possible misinterpretation of Original Government Notes.
- Inconsistencies in the lines of Occupation: None
- Theoretical Uncertainty (Random Errors in Measurement): The relative positional accuracy of this survey is within that allowable for a Rural class survey (0.26' plus 200 PPM) as defined I.A.C. Title 865

PHOTO IDENTIFIED:

Photo Date: 3/29/2024



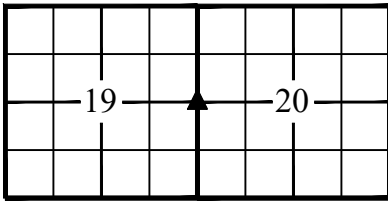
MONUMENT RECORD

Corner ID: **RICH E-15**

Quarter Section Corner

Sections 19 & 20, Township 9 North, Range 2 West, 2nd P.M.

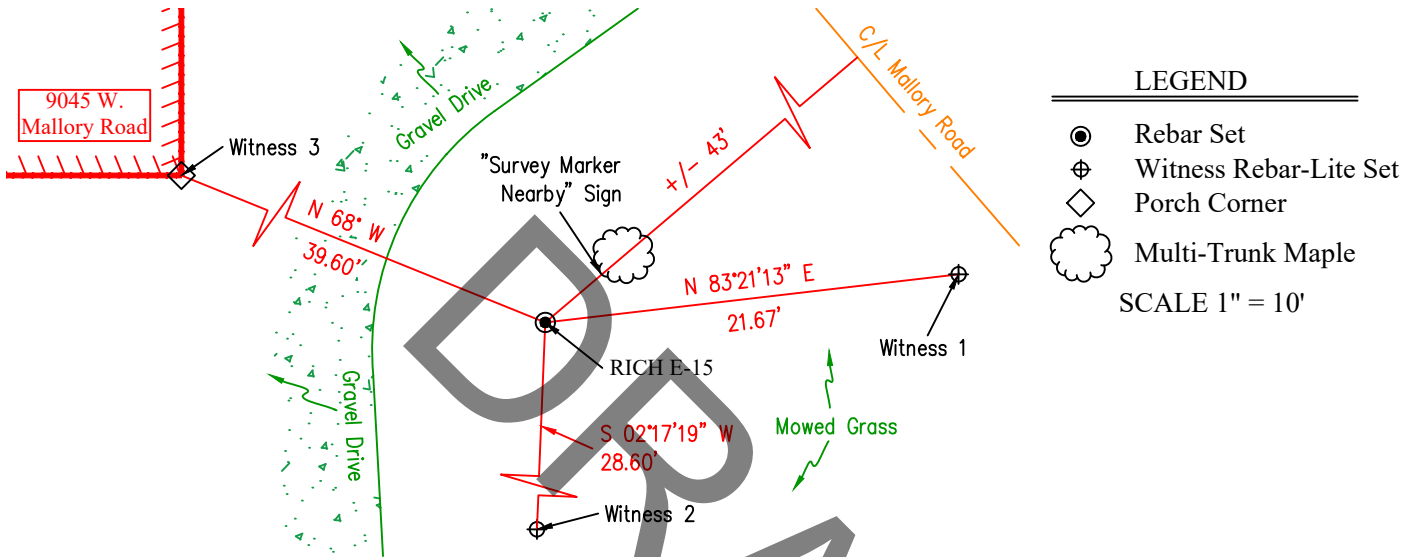
Richland Township, Monroe County, Indiana



MONUMENT: A 3/4" diameter rebar with a red unmarked cap was found 3" below grade.

GEODETIC COORDINATES: Northing: 1440406.92 Easting: 3070464.54

MONUMENT LOCATION SKETCH:



WITNESS MONUMENT TIES:

I.D.	Bearing	Distance	Witness Description
1	N 83°21'13" E	21.67'	Rebar-Lite Set 2" below grade
2	S 02°17'19" W	28.60'	Rebar-Lite Set 2" below grade
3	N 68° W	39.60'	Corner of block porch (recovered witness)

MONUMENT PRESERVATION: The existing "Survey Marker Nearby" sign was left on the Maple tree as shown on previous corner ties.

OTHER EVIDENCE: At the time of this survey, this corner can be easily accessed from the gravel driveway located at 9045 W. Mallory Road.

PHOTO IDENTIFIED:

Looking Down

Photo Date: 3/25/24



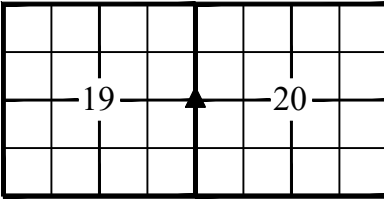
MONUMENT RECORD

Corner ID: **RICH E-15**

Quarter Section Corner

Sections 19 & 20, Township 9 North, Range 2 West, 2nd P.M.

Richland Township, Monroe County, Indiana



EXISTING SURVEY HISTORY:

Post (assumed) - Original Government Survey, 1811-1815
Post - Henry Tanner, November 10th, 1847, Legal Survey Book 1, Page 89
Stone Set - Alexander C. Spencer, June 7th, 1872, Legal Survey Book 2, Pages 199-200
Rebar with Cap Set - Bernard A. Guerrettaz II, September 4th, 2004, Instr. 2005001436
Rebar with Cap Found - M.C.S.O. Tie Sheet, December 21st, 2005
Rebar with Cap Set - Bernard A. Guerrettaz II, March 6th, 2006, Instr. 2006009118
Rebar with Cap Found - David R. Meier, April 13th, 2009, County Surveyor's Files
Rebar Found - Eric L. Deckard, May 14th, 2009, Instr. 2009008879
Rebar with Cap Found - Rachel A. Oser, June 18th, 2014, Instr. 2014008327
Rebar with Cap Found - Rachel A. Oser, January 22nd, 2016, Instr. 2016000992

PREVIOUS CERTIFICATION: This rebar is believed to have been referenced by Monroe County Surveyor Kevin P. Enright on December 21st, 2005.

THEORY OF LOCATION/CORNER ANALYSIS: It is believed that the stone that was set marking this corner in 1872 is no longer existing and has been determined to be lost. This rebar was found to measure +/- 0.76' from an exact split between the Northeast and Southeast corners of Section 19, Township 9 North, Range 2 West. This rebar was found to measure +/- 0.21' in the North/South direction of that split. A 2004 survey by Bernard A. Guerrettaz II states that a 5/8" diameter rebar with a yellow cap was set marking this corner, however the recovered rebar appeared to be larger and had an unmarked red cap. The origin of this rebar cannot be determined due to the difference in character from the record monument from the Guerrettaz survey, however due to its very close proximity to the position of the calculated record monument based on several of the surveys that made reference to it, it was accepted and held.

FIELD PERSONNEL:

Field Date: 3/25/24 By: JR & CD Project #: 24-35 Notes: Field notes on file at M.C.S.O.

BASIS OF GEODETIC COORDINATES: Coordinates shown hereon were obtained from GPS observations utilizing the Indiana Real-Time Network (INCORS). Indiana West Zone, NAD83, State Plane Grid Coordinates, US Survey Feet. Geoid model ContinentalUS_NGS2018. Coordinate data was collected using a Carlson BRX7 GPS and an Carlson RT4 Data Collector. Coordinate positions are grid north (Indiana State Plane West Zone).

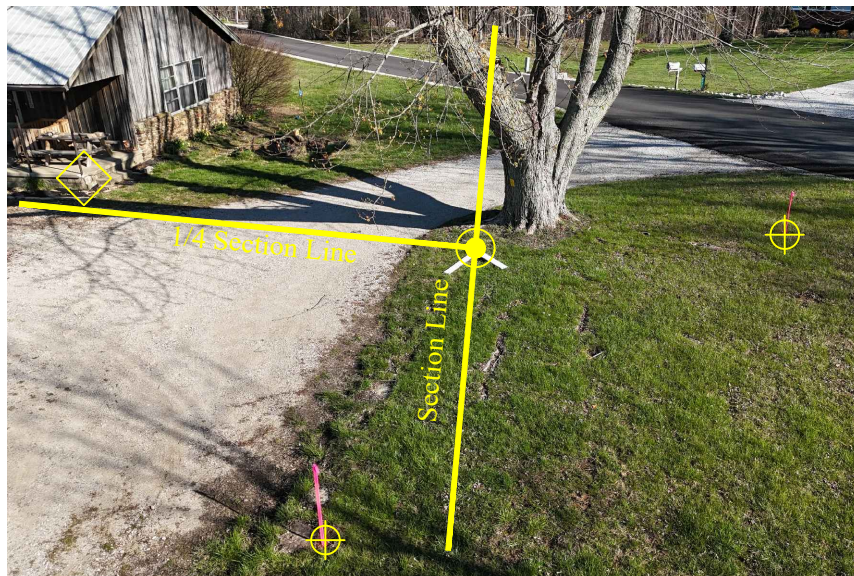
UNCERTAINTIES IN THE CORNER LOCATION DUE TO:

- Variances in the Monuments: See "Corner Analysis"
- Discrepancies in the Documents: See "Corner Analysis"
- Inconsistencies in the lines of Occupation: None
- Theoretical Uncertainty (Random Errors in Measurement): The relative positional accuracy of this survey is within that allowable for a Rural class survey (0.26' plus 200 PPM) as defined I.A.C. Title 865

PHOTO IDENTIFIED:

Photo Date: 3/25/24

Looking North



MONUMENT RECORD
State of Indiana - County of Monroe

Section: 20

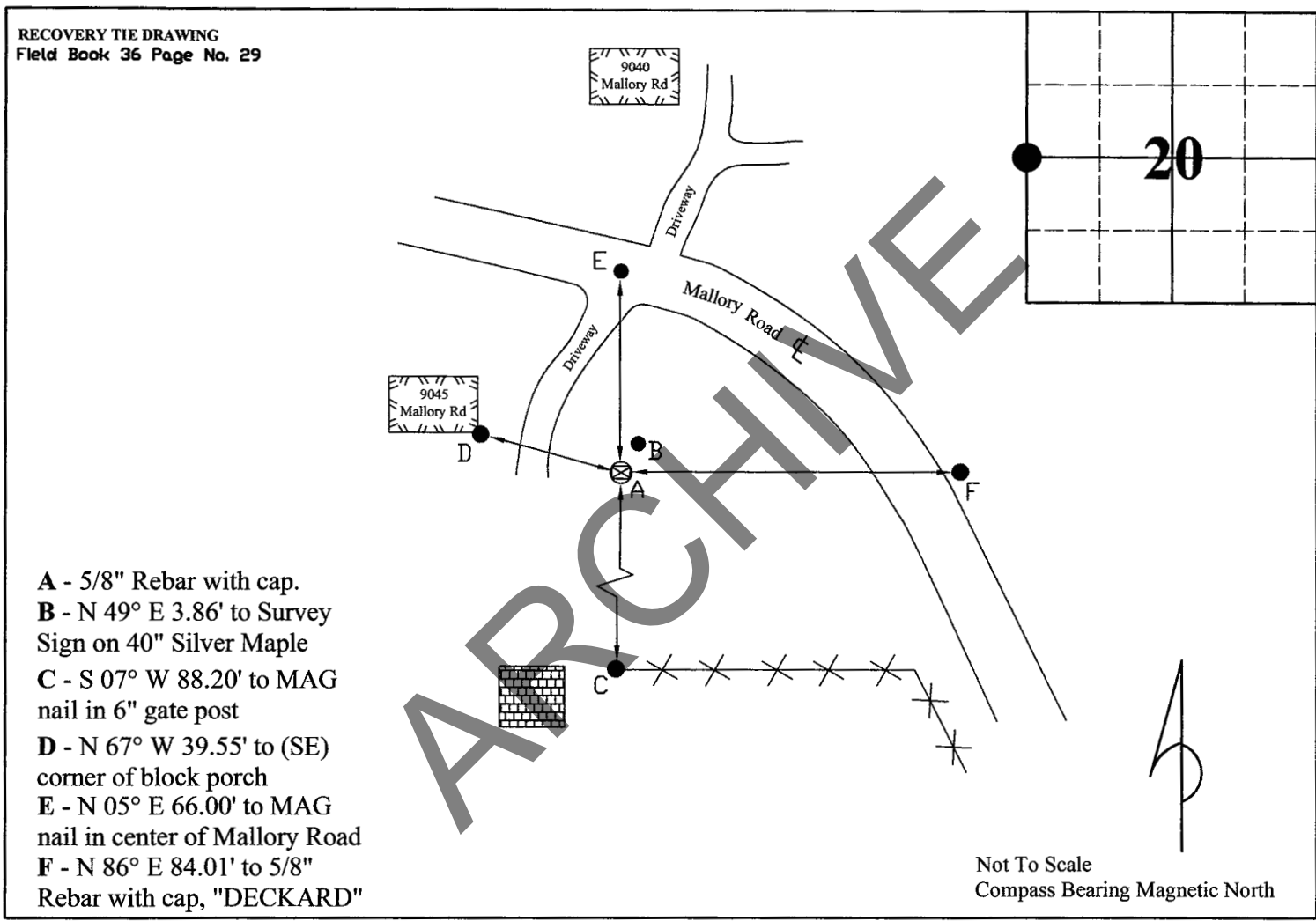
Township: 9 North

Range: 2 West

Corner ID: Rich E-15

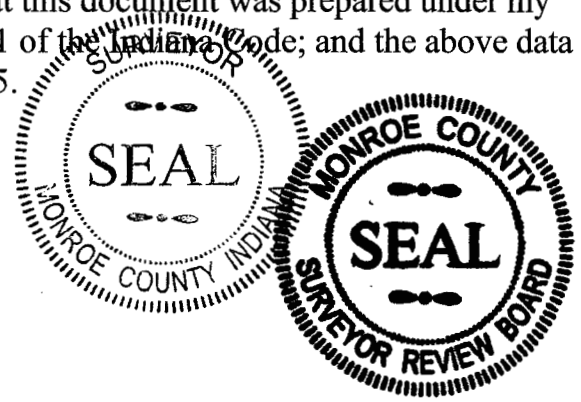
Monument Description & Remarks: 5/8" Rebar with cap (no description or name on cap) found. Survey Sign 4.5ft A.G. at Pt. (B).

References On File: Eric L. Deckard survey, EADS-MINTON (2009), on file in Surveyor Office and Bledsoe Tapp & Riggert, Inc., survey, Leoda Baxter (2005), on file in Recorder Office cabinet S, envelope 255



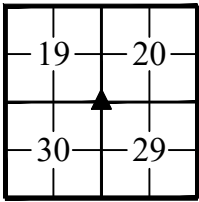
I, Kevin P. Enright, Monroe County Surveyor, hereby certify that this document was prepared under my direction in accordance with the provisions of section 36-2-12-11 of the Indiana Code; and the above data is given under my hand and seal this 21st day of December, 2005.

Kevin P. Enright



Administered by the Monroe County Surveyor Review Board

Date: _____



MONUMENT RECORD

Corner ID: **RICH E-17**

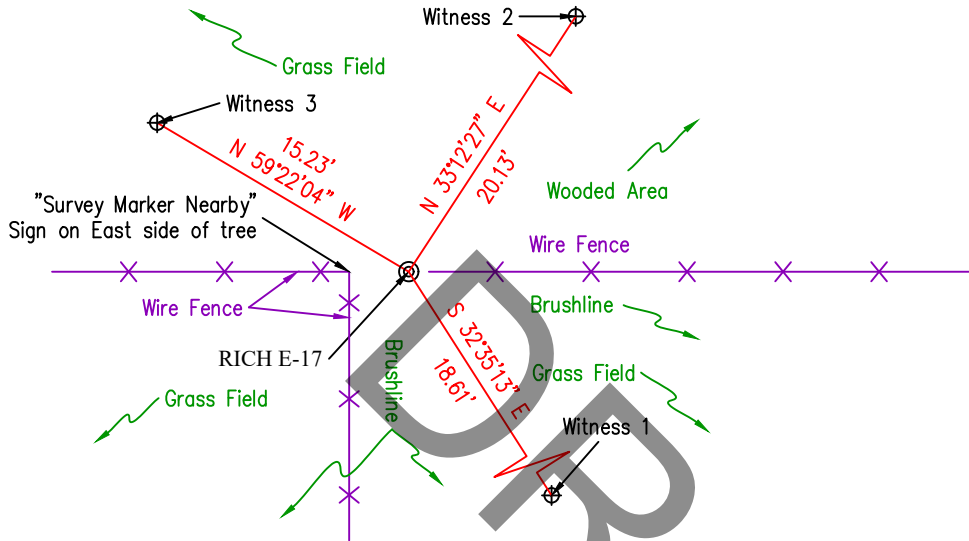
Section Corner

Sections 19, 20, 29, & 30, Township 9 North, Range 2 West, 2nd P.M.
Richland Township, Monroe County, Indiana

MONUMENT: A 5/8" diameter rebar with a mangled yellow cap was found 6" above grade at the base (South side) of a fallen tree.

GEODETIC COORDINATES: Northing: 1437730.72 Easting: 3070504.90

MONUMENT LOCATION SKETCH:



LEGEND

- ⊙ Rebar Found
- ⊕ Witness Rebar-Lite Set

SCALE 1" = 10'

WITNESS MONUMENT TIES:

I.D.	Bearing	Distance	Witness Description
1	S 32°35'13" E	18.61'	Rebar-Lite Set 2" below grade
2	N 33°12'27" E	20.13'	Rebar-Lite Set 2" below grade
3	N 59°22'04" W	15.23'	Rebar-Lite Set 2" below grade

MONUMENT PRESERVATION: A "Survey Marker Nearby" Sign was placed on a tree 3.1' West of the corner.

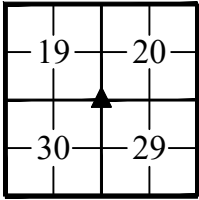
OTHER EVIDENCE: At the time of this survey, this corner could be accessed from a farm road running South off of Mallory Road located at 9029 W. Mallory Road.

PHOTO IDENTIFIED:

Photo Date: 3/25/24

Looking Down





MONUMENT RECORD

Corner ID: **RICH E-17**

Section Corner

Sections 19, 20, 29, & 30, Township 9 North, Range 2 West, 2nd P.M.
Richland Township, Monroe County, Indiana

EXISTING SURVEY HISTORY:

- Post - Original Government Survey, 1811-1815
- No monument specifically referenced, new witnesses made - Alexander C. Spencer, June 7th, 1872, Legal Survey Book 2, pages 199-200
- 36" Hickory - Edmund O. Farkas, October 1st, 1992, County Auditor's Files
- Existing Stone - Raymond Graham, November 10th, 1994, County Auditor's Files
- 4"x4" Cut Limestone - Bernard A. Guerrettaz II, September 4th, 2004, Instr. 2005001436
- 4"x4" Cut Limestone - Bernard A. Guerrettaz II, March 6th, 2006, Instr. 2006009118
- Rebar with "BRG" Cap Set at base of Hickory at location of Stone - Bernard A. Guerrettaz II, April 18th, 2008, Instr. 2024002549
- Rebar with "BRG" Cap Found at North side of Stone - Ben E. Bledsoe, June 23rd, 2011, Instr. 2011008668
- Rebar with "BRG" Cap Found - Rachel A. Oser, June 18th, 2014, Instr. 2014008327
- Rebar with "BRG" Cap Found - Eric L. Deckard, March 29th, 2021, Instr. 2021013520

PREVIOUS CERTIFICATION: None

THEORY OF LOCATION/CORNER ANALYSIS: The rebar that was recovered in this survey is believed to have been set by Bernard A Guerrettaz II in 2008 replacing a disturbed stone at the base of a Hickory tree. The rebar recovered in this survey was found at the base of a fallen tree, no stone was recovered. Much of the area was covered with the trunk and debris from this fallen tree. Raymond Graham and Bernard Guerrettaz II make reference to the stone prior to being disturbed, and the position of the rebar found is believed to be reliable and was accepted and held.

FIELD PERSONNEL:

Field Date: 3/25/24 By: JR & CD Project #: 24-35 Notes: Field notes on file at M.C.S.O.

BASIS OF GEODETIC COORDINATES: Coordinates shown hereon were obtained from GPS observations utilizing the Indiana Real-Time Network (INCORS). Indiana West Zone, NAD83, State Plane Grid Coordinates, US Survey Feet. Geoid model ContinentalUS_NGS2018. Coordinate data was collected using a Carlson BRX7 GPS and an Carlson RT4 Data Collector. Coordinate positions are grid north (Indiana State Plane West Zone).

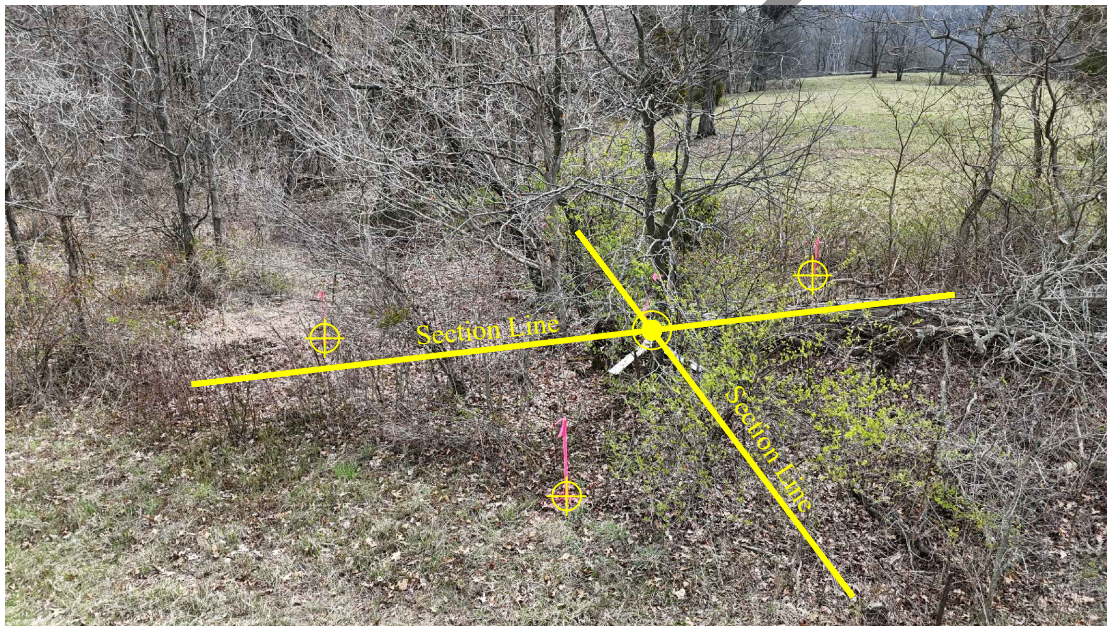
UNCERTAINTIES IN THE CORNER LOCATION DUE TO:

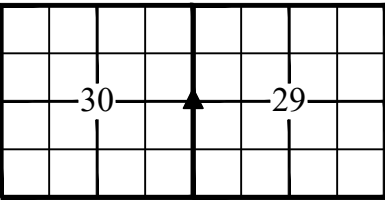
- Variances in the Monuments: Record show that for a period of time (as early as 1994 to 2006) a stone was held at this corner. Prior to that oen survey was found making reference to a Hickory tree at the corner. The rebar held in this survey is believed to have been set following the stone being disturbed.
- Discrepancies in the Documents: None
- Inconsistencies in the lines of Occupation: A fence intersection was found 3' West of this corner.
- Theoretical Uncertainty (Random Errors in Measurement): The relative positional accuracy of this survey is within that allowable for a Rural class survey (0.26' plus 200 PPM) as defined I.A.C. Title 865

PHOTO IDENTIFIED:

Photo Date: 3/25/24

Looking East





MONUMENT RECORD

Corner ID: **RICH E-19**

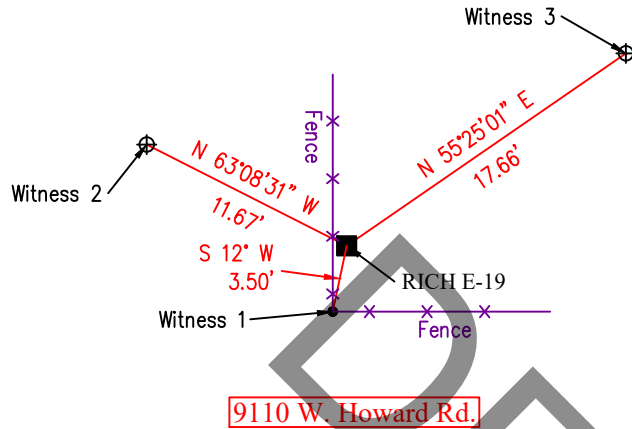
Quarter Section Corner

Sections 29 & 30, Township 9 North, Range 2 West, 2nd P.M.
Richland Township, Monroe County, Indiana

MONUMENT: A 6"x4" stone with a scribed "X" was found standing 3" above grade.

GEODETIC COORDINATES: Northing: 1435067.99 Easting: 3070544.49

MONUMENT LOCATION SKETCH:



LEGEND

- Stone Found
- ⊕ Witness Rebar-Lite Set
- Mag Nail Found

SCALE 1" = 10'

WITNESS MONUMENT TIES:

I.D.	Bearing	Distance	Witness Description
1	S 12° W	3.50'	Mag Nail Found in East side of 18" Black Walnut
2	N 63°08'31" W	11.67'	Rebar-Lite Set 2" below grade
3	N 55°25'01" E	17.66'	Rebar-Lite Set 2" below grade

MONUMENT PRESERVATION: The existing "Survey Marker Nearby" sign was left on the Hickory referenced in prior ties.

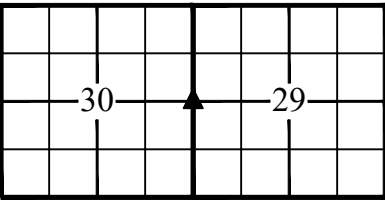
ACCESS: At the time of this survey this corner could be accessed from 9110 W. Howard Road.

PHOTO IDENTIFIED:

Looking West

Photo Date: 3/27/24





MONUMENT RECORD

Corner ID: **RICH E-19**

Quarter Section Corner

Sections 29 & 30, Township 9 North, Range 2 West, 2nd P.M.
Richland Township, Monroe County, Indiana

EXISTING SURVEY HISTORY:

- Post - Original Government Survey, 1811-1815
- No monument specifically referenced - H. Henley, April 2nd, 1878, Legal Survey Book 2, Pages 277-278
- Stone Found - Eric L. Deckard, September 25th, 2006, Instr. 2006020051
- Stone Found - Bernard A. Guerrettaz II, April 18th, 2008, Instr. 2024002549
- Stone Found - Eric L. Deckard, March 29th, 2021, Instr. 2021013520

PREVIOUS CERTIFICATION: This stone was referenced by Monroe County Surveyor Kevin P. Enright on June 6th, 2013.

THEORY OF LOCATION/CORNER ANALYSIS: This stone is believed to have been set in the 1878 survey by H. Henley. Henley does not specifically state that a stone was set, however the stone found is consistent in character with the stone found marking RICH E-21 which is believed to have been set in the same survey. This stone was accepted and held with no associated uncertainty.

FIELD PERSONNEL:

Field Date: 3/27/24 By: OL & CD Project #: 24-35 Notes: Field notes on file at M.C.S.O.

BASIS OF GEODETIC COORDINATES: Coordinates shown hereon were obtained from GPS observations utilizing the Indiana Real-Time Network (INCORS). Indiana West Zone, NAD83, State Plane Grid Coordinates, US Survey Feet. Geoid model ContinentalUS_NGS2018. Coordinate data was collected using a Carlson BRX7 GPS and an Carlson RT4 Data Collector. Coordinate positions are grid north (Indiana State Plane West Zone).

UNCERTAINTIES IN THE CORNER LOCATION DUE TO:

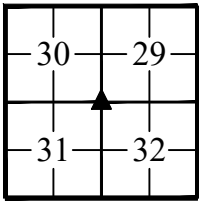
- Variances in the Monuments: None
- Discrepancies in the Documents: None
- Inconsistencies in the lines of Occupation: A fence intersection was found S 12° W 3.5' from the stone.
- Theoretical Uncertainty (Random Errors in Measurement): The relative positional accuracy of this survey is within that allowable for a Rural class survey (0.26' plus 200 PPM) as defined I.A.C. Title 865

PHOTO IDENTIFIED:

Photo Date: 3/27/24

Looking West





MONUMENT RECORD

Corner ID: **RICH E-21**

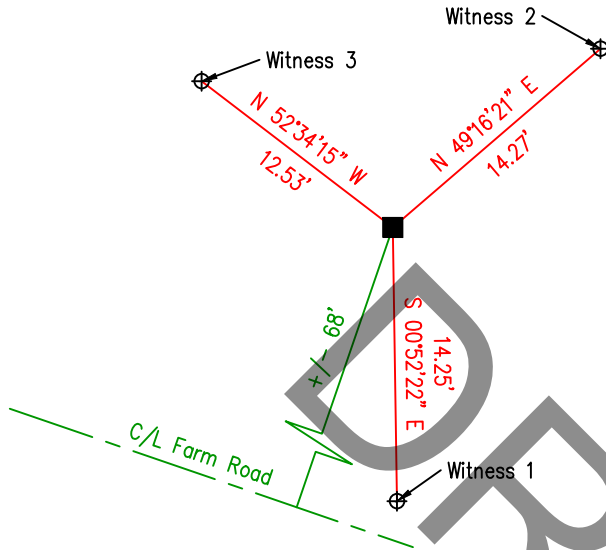
Section Corner

Sections 29, 30, 31, & 32, Township 9 North, Range 2 West, 2nd P.M.
Richland Township, Monroe County, Indiana

MONUMENT: A 3"x5" stone with a scribed "X" was found standing 3" above grade.

GEODETIC COORDINATES: Northing: 1432411.17 Easting: 3070581.16

MONUMENT LOCATION SKETCH:



LEGEND

- Stone Found
- ⊕ Witness Rebar-Lite Set

SCALE 1" = 10'

WITNESS MONUMENT TIES:

I.D.	Bearing	Distance	Witness Description
1	S 00°52'22" E	14.25'	Rebar-Lite Set 2" below grade
2	N 49°16'21" E	14.27'	Rebar-Lite Set 2" below grade
3	N 52°34'15" W	12.53'	Rebar-Lite Set 2" below grade

MONUMENT PRESERVATION: The existing "Survey Marker Nearby" sign was left on the East side of the stone as shown in previous ties.

ACCESS: This stone can be accessed by an East-West running farm road coming from a crop field situated Southwest of this corner. At the time of this survey, field crews accessed the farm road from 9603 W. Howard Road (CALL AHEAD).

PHOTO IDENTIFIED:

Looking Down

Photo Date: 3/27/24

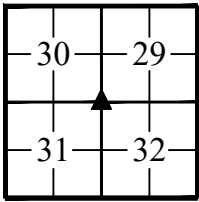


MONUMENT RECORD

Corner ID: **RICH E-21**

Section Corner

Sections 29, 30, 31, & 32, Township 9 North, Range 2 West, 2nd P.M.
Richland Township, Monroe County, Indiana



EXISTING SURVEY HISTORY:

- Post (assumed) - Original Government Survey, 1811-1815
- No monument referenced - James W. Spencer, May 15th, 1838, Legal Survey Book 1, Page 50
- Stone Set - H. Henley, April 2nd, 1878, Legal Survey Book 2, Pages 277-278
- Stone Found - June 14th, 2011, Monroe County Ties Sheet Corner I.D. "RICH E-21"
- Stone Found - Eric L. Deckard, September 25th, 2006, Instr. 2006020051
- Stone Found - Bernard A. Guerretaz II, April 18th, 2008, Instr. 2024002549
- Stone Found - Eric L. Deckard, March 29th, 2021, Instr. 2021013520

PREVIOUS CERTIFICATION: This stone was referenced by Monroe County Surveyor Kevin P. Enright on June 6th, 2011.

THEORY OF LOCATION/CORNER ANALYSIS: This stone is believed to have been set in 1838 by H. Henley and has been consistently held in surveys in the area. This stone was accepted and held with no associated uncertainty.

FIELD PERSONNEL:

Field Date: 3/27/24 By: OL & CD Project #: 24-35 Notes: Field notes on file at M.C.S.O.

BASIS OF GEODETIC COORDINATES: Coordinates shown hereon were obtained from GPS observations utilizing the Indiana Real-Time Network (INCORS). Indiana West Zone, NAD83, State Plane Grid Coordinates, US Survey Feet. Geoid model ContinentalUS_NGS2018. Coordinate data was collected using a Carlson BRX7 GPS and an Carlson RT4 Data Collector. Coordinate positions are grid north (Indiana State Plane West Zone).

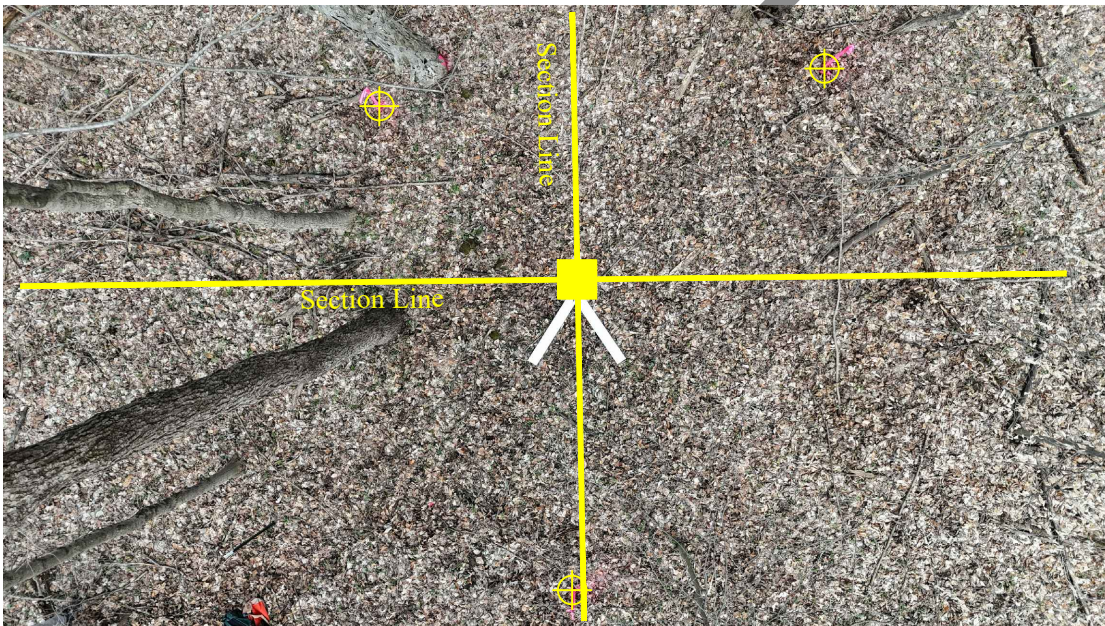
UNCERTAINTIES IN THE CORNER LOCATION DUE TO:

- Variances in the Monuments: None
- Discrepancies in the Documents: None
- Inconsistencies in the lines of Occupation: None
- Theoretical Uncertainty (Random Errors in Measurement): The relative positional accuracy of this survey is within that allowable for a Rural class survey (0.26' plus 200 PPM) as defined I.A.C. Title 865

PHOTO IDENTIFIED:

Photo Date: 3/27/24

Looking Down/North



MONUMENT RECORD
State of Indiana - County of Monroe

Section: 30

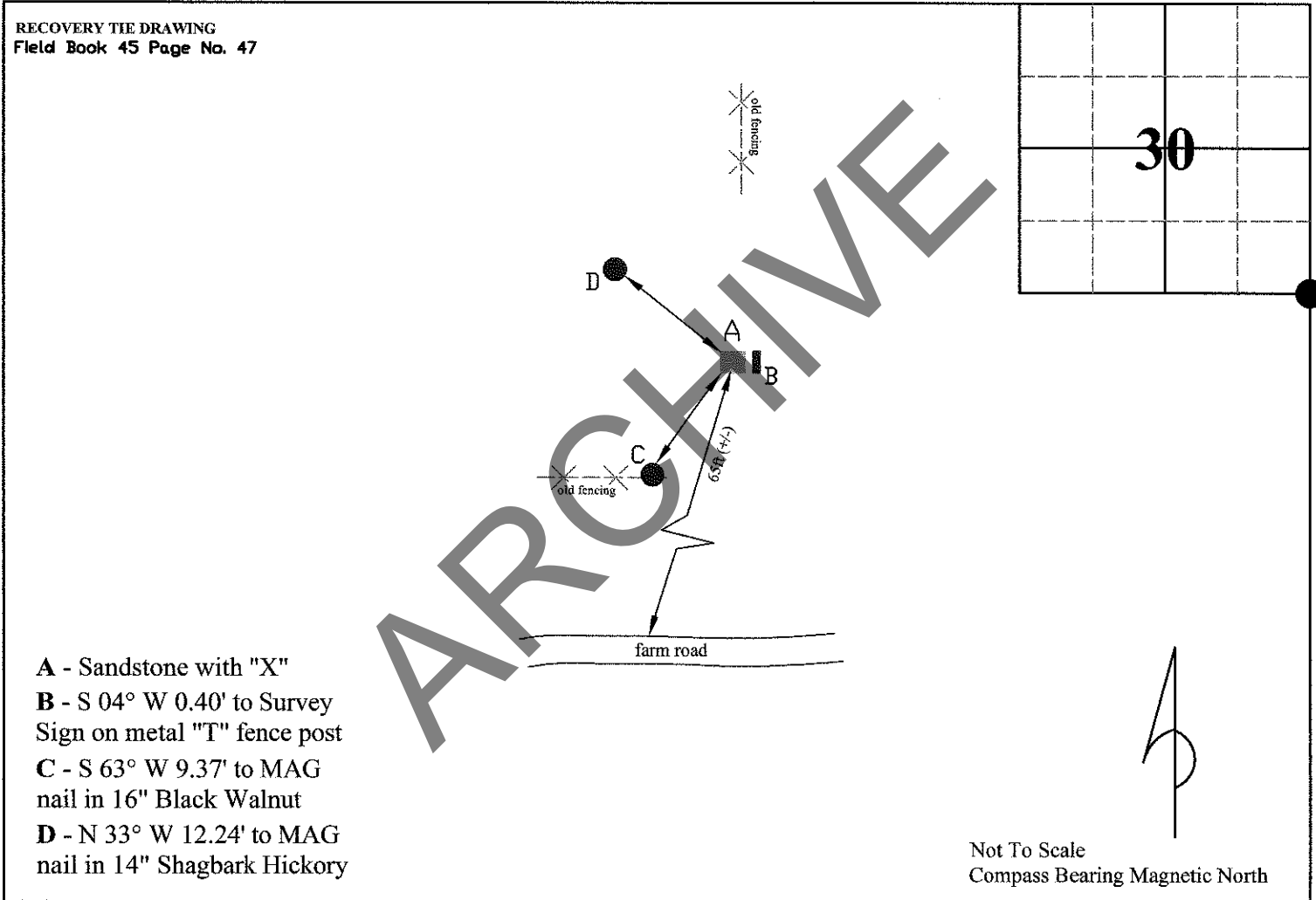
Township: 9 North

Range: 2 West

Corner ID: Rich E-21

Monument Description & Remarks: Sandstone with "X", length 0.60ft, width 0.35ft, height 0.35ft. Survey Sign 4ft above ground at pt. B

References On File: Legal Survey Book 2 page 277, MCS Henry Henley survey (1878), on file in Surveyor Office and Eric Lee Deckard survey, Cooke (2006), on file in Recorder Office cabinet S1 envelope 367-368



I, Kevin P. Enright, Monroe County Surveyor, hereby certify that this document was prepared under my direction in accordance with the provisions of section 30 of the Indiana Code, and the above data is given under my hand and seal this 6th day of June, 2011.

Kevin P. Enright



Administered by the Monroe County Surveyor Review Board

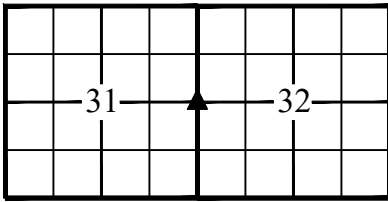
Date: 6/14/2011

MONUMENT RECORD

Corner ID: **RICH E-23**

Quarter Section Corner

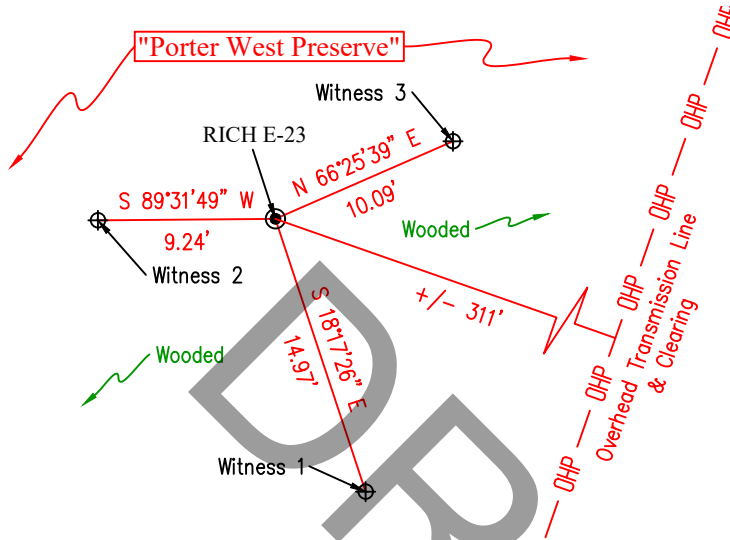
Section 31 & 32, Township 9 North, Range 2 West, 2nd P.M.
Richland Township, Monroe County, Indiana



MONUMENT: A 5/8" diameter rebar with a cap stamped "Deckard" was set 6" above grade.

GEODETIC COORDINATES: Northing: 1429712.90 Easting: 3070671.03

MONUMENT LOCATION SKETCH:



LEGEND

- ⊙ Rebar Set
- ⊕ Witness Rebar-Lite Set

SCALE 1" = 10'

WITNESS MONUMENT TIES:

I.D.	Bearing	Distance	Witness Description
1	S 18°17'26" E	14.97'	Rebar-Lite Set 2" below grade
2	S 89°31'49" W	9.24'	Rebar-Lite Set 2" below grade
3	N 66°25'39" E	10.09'	Rebar-Lite Set 2" below grade

MONUMENT PRESERVATION: A "Survey Marker Nearby" sign was placed on the North side of the rebar set.

ACCESS: This corner can be accessed via the hiking trails at Porter West Preserve.

PHOTO IDENTIFIED:

Photo Date: 3/29/24

Looking Down

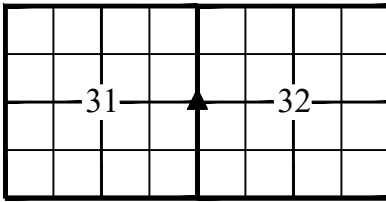


MONUMENT RECORD

Corner ID: **RICH E-23**

Quarter Section Corner

Section 31 & 32, Township 9 North, Range 2 West, 2nd P.M.
Richland Township, Monroe County, Indiana



EXISTING SURVEY HISTORY:

Post - Original Government Survey, 1811-1815

No monument referenced - James W. Spencer, May 15th, 1838, Legal Survey Book 1, Page 50

PREVIOUS CERTIFICATION: None

THEORY OF LOCATION/CORNER ANALYSIS: No monument was specified in the 1838 survey performed by James W. Spencer. It is possible that a stone may have been set, however there is no way to be certain. The area this corner fell was a wooded area with lots of exposed stones. No witnesses from the 1838 survey were recovered and none of the stones in the area appeared to have any marking that would indicate it was a survey marker. Due to these findings a rebar was set using single proportionate measure on-line between the pipe found and held at RICH E-22 and the rebar found and held at RICH E-25.

FIELD PERSONNEL:

Field Date: 3/29/24

By: OL & CD

Project #: 24-35

Notes: Field notes on file at M.C.S.O.

BASIS OF GEODETIC COORDINATES: Coordinates shown hereon were obtained from GPS observations utilizing the Indiana Real-Time Network (INCORS). Indiana West Zone, NAD83, State Plane Grid Coordinates, US Survey Feet. Geoid model ContinentalUS_NGS2018. Coordinate data was collected using a Carlson BRX7 GPS and an Carlson RT4 Data Collector. Coordinate positions are grid north (Indiana State Plane West Zone).

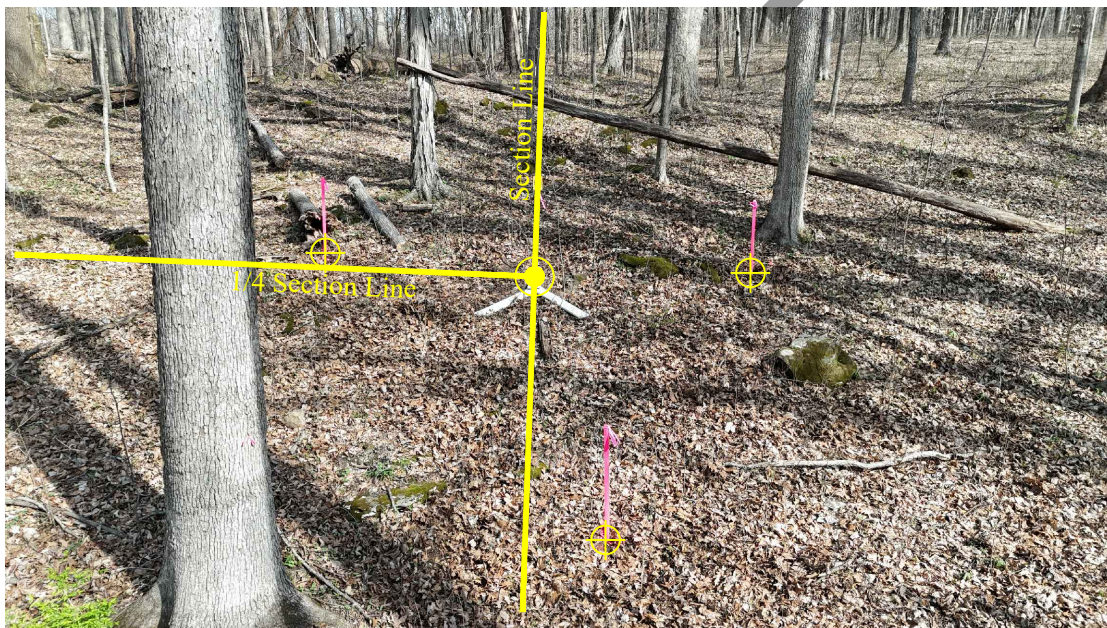
UNCERTAINTIES IN THE CORNER LOCATION DUE TO:

- Variances in the Monuments: None
- Discrepancies in the Documents: None
- Inconsistencies in the lines of Occupation: None
- Theoretical Uncertainty (Random Errors in Measurement): The relative positional accuracy of this survey is within that allowable for a Rural class survey (0.26' plus 200 PPM) as defined I.A.C. Title 865

PHOTO IDENTIFIED:

Photo Date: 3/29/24

Looking North

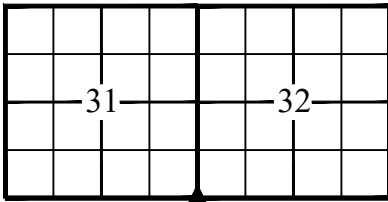


MONUMENT RECORD

Corner ID: **RICH E-25**

Section Corner

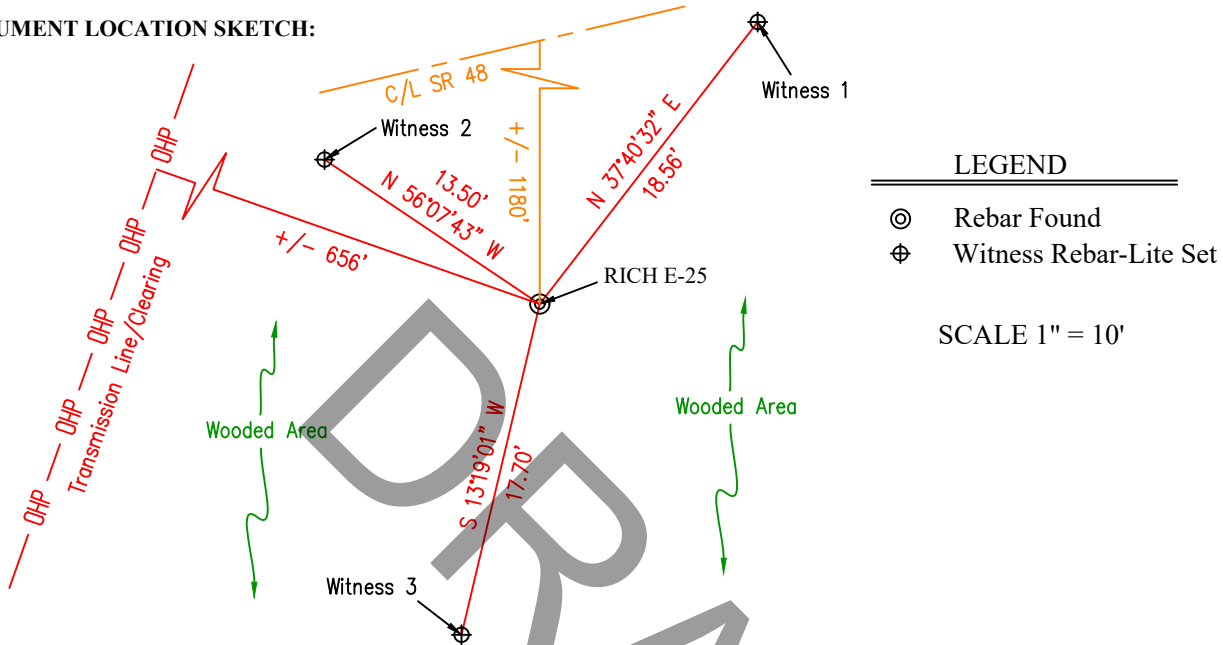
Sections 31 & 32, Township 9 North, Range 2 West, 2nd P.M.
Richland Township, Monroe County, Indiana



MONUMENT: A 5/8" diameter rebar with a mangled yellow cap stamped "Bynum-Fanyo" was found 6" above grade.

GEODETIC COORDINATES: Northing: 1427016.31 Easting: 3070748.99

MONUMENT LOCATION SKETCH:



WITNESS MONUMENT TIES:

I.D.	Bearing	Distance	Witness Description
1	N 37°40'32" E	18.56'	Rebar-Lite Set 2 inches below grade
2	N 56°07'43" W	13.50'	Rebar-Lite Set 2 inches below grade
3	S 13°19'01" W	17.70'	Rebar-Lite Set 2 inches below grade

MONUMENT PRESERVATION: A t-post with a "Survey Marker Nearby" sign was placed on the North side of the monument.

ACCESS: At the time of this survey this corner could be accessed by parking on the shoulder of State Road 48 and traversing South to the corner.

PHOTO IDENTIFIED:

Looking Down

Photo Date: 3/25/2024

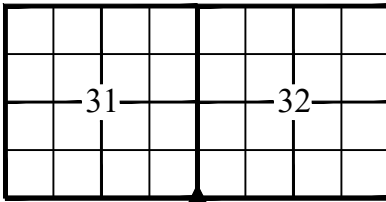


MONUMENT RECORD

Corner ID: **RICH E-25**

Section Corner

Sections 31 & 32, Township 9 North, Range 2 West, 2nd P.M.
Richland Township, Monroe County, Indiana



EXISTING SURVEY HISTORY:

Post - Original Government Survey, 1811-1815
Rebar (Calculated Per Ties) - Jess A. Gwinn, February 13th, 2009, Instr. 2009003712
Rebar Set - Douglas R. Curry, July 16th, 2009, Instr. 2009013233

PREVIOUS CERTIFICATION: None

THEORY OF LOCATION/CORNER ANALYSIS: Douglas Curry's survey dated July 16th, 2009 referenced this corner as a rebar set and Jess Gwinn's survey dated February 13th, 2009 states that a rebar was calculated per that Curry survey. A surveyor's report for the plat of Grace Jackson LLC Administrative Subdivision Type "E" was filed as Instr. 2009013233 in the office of the Monroe County Recorder. This report states that Curry used surveys performed by Lee Utt for placement of the final corners in his survey. No evidence was found disproving the location of the rebar that Curry set and it was accepted and held.

FIELD PERSONNEL:

Field Date: 3/25/24 By: CD & JR Project #: 24-35 Notes: Field notes on file at M.C.S.O.

BASIS OF GEODETIC COORDINATES: Coordinates shown hereon were obtained from GPS observations utilizing the Indiana Real-Time Network (INCORS). Indiana West Zone, NAD83, State Plane Grid Coordinates, US Survey Feet. Geoid model ContinentalUS_NGS2018. Coordinate data was collected using a Carlson BRX7 GPS and an Carlson RT4 Data Collector. Coordinate positions are grid north (Indiana State Plane West Zone).

UNCERTAINTIES IN THE CORNER LOCATION DUE TO:

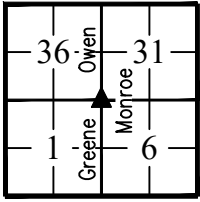
- Variances in the Monuments: None
- Discrepancies in the Documents: None
- Inconsistencies in the lines of Occupation: None
- Theoretical Uncertainty (Random Errors in Measurement): The relative positional accuracy of this survey is within that allowable for a Rural class survey (0.26' plus 200 PPM) as defined I.A.C. Title 865

PHOTO IDENTIFIED:

Photo Date: 3/25/2024

Looking South



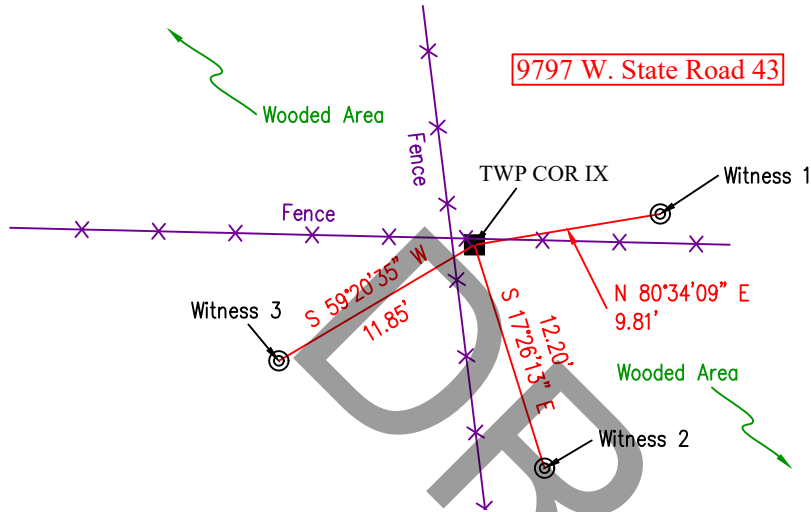


MONUMENT RECORD
 Corner ID: **TWP COR IX**
 Township Corner
 Townships 8 & 9 North, Ranges 2 & 3 West
 Monroe, Greene, & Owen County

MONUMENT: An 8"x4" stone with a scribed "X" was found 2" above grade.

GEODETIC COORDINATES: Northing: 1427056.01 Easting: 3066207.36

MONUMENT LOCATION SKETCH:



LEGEND

■ Stone Found
 ⊙ Witness Rebar Found

SCALE 1" = 10'

WITNESS MONUMENT TIES:

I.D.	Bearing	Distance	Witness Description
1	N 80°34'09" E	9.81'	5/8" diameter with cap stamped "WITNESS" Found 2 inches above grade.
2	S 17°26'13" E	12.20'	5/8" diameter with cap stamped "WITNESS" Found 2 inches above grade.
3	S 59°20'35" W	11.85'	5/8" diameter with cap stamped "WITNESS" Found 2 inches above grade.

MONUMENT PRESERVATION: A "Survey Marker Nearby" sign was found on the North side of fence post.

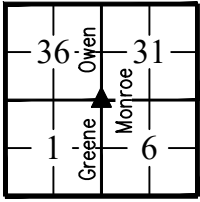
OTHER EVIDENCE: This stone was found situated at a four-way fence intersection.

PHOTO IDENTIFIED:

Photo Date: 3/27/2024

Looking Down





MONUMENT RECORD

Corner ID: **TWP COR IX**

Township Corner

Townships 8 & 9 North, Ranges 2 & 3 West
Monroe, Greene, & Owen County

EXISTING SURVEY HISTORY:

- Post (assumed) - Original Government Survey, 1811-1815
- Stone Found - INDOT Project Number RS-5560(1), 1978
- Stone Found - July 23rd, 1981, Owen County Tie Sheet
- Stone Found - Lee Utt, November 5th, 1987, County Auditor's Files
- Wood Post Found - INDOT Project Number ST 5760 (B), 1998
- Stone Found - Lee Utt, March 26th, 1996, Utt's files at Deckard Land Surveying
- Stone Found - June 30th, 1998, Owen County Tie Sheet
- Stone Found - Douglas R. Curry, July 16th, 2009, Instr. 2009013233
- Stone Found - December 6th, 2018, Monroe County Tie Sheet, Corner I.D. "TWP COR IX"

PREVIOUS CERTIFICATION: This stone has been referenced by both the Monroe and Owen County Surveyor's office.

THEORY OF LOCATION/CORNER ANALYSIS: The origin of this stone is unknown. The stone found matches well with old wire fencing running North-South and East-West. Several surveys were found making reference to this stone as far back as 1978. Although the origin is unknown, it is apparent that this stone has been accepted as the Township corner by local surveyors in both Monroe and Owen County and it was accepted and held.

FIELD PERSONNEL:

Field Date: 3/27/24 By: CD & JR Project #: 24-35 Notes: Field notes on file at M.C.S.O.

BASIS OF GEODETIC COORDINATES: Coordinates shown hereon were obtained from GPS observations utilizing the Indiana Real-Time Network (INCORS). Indiana West Zone, NAD83, State Plane Grid Coordinates, US Survey Feet. Geoid model ContinentalUS_NGS2018. Coordinate data was collected using a Carlson BRX7 GPS and an Carlson RT4 Data Collector. Coordinate positions are grid north (Indiana State Plane West Zone).

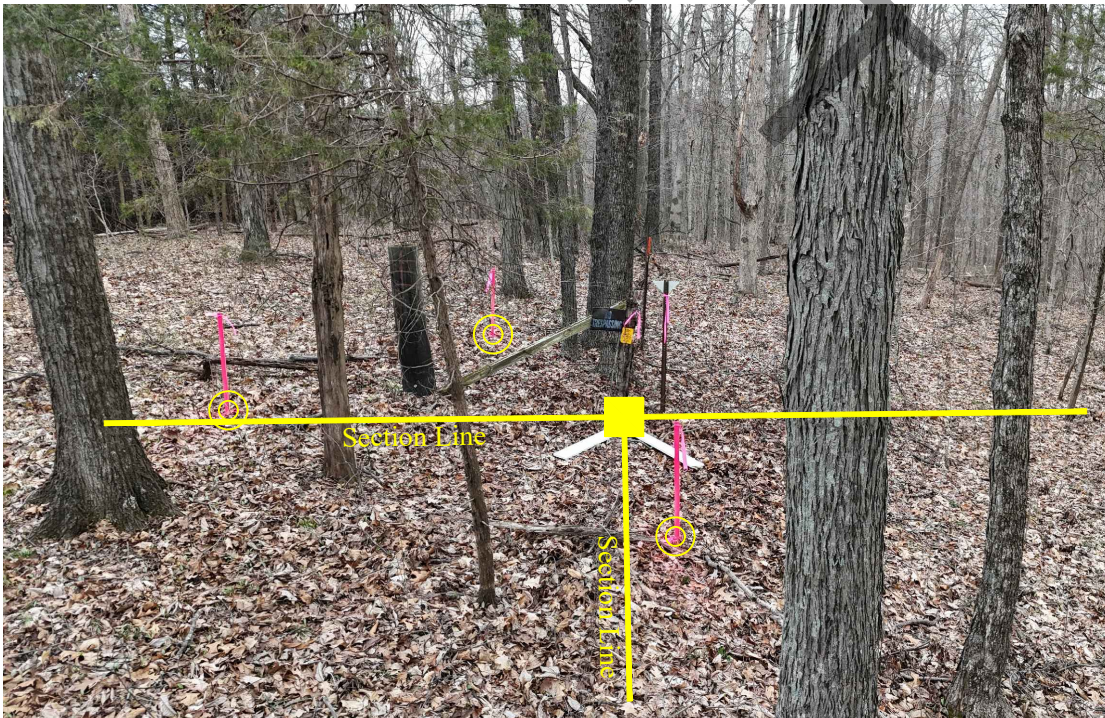
UNCERTAINTIES IN THE CORNER LOCATION DUE TO:

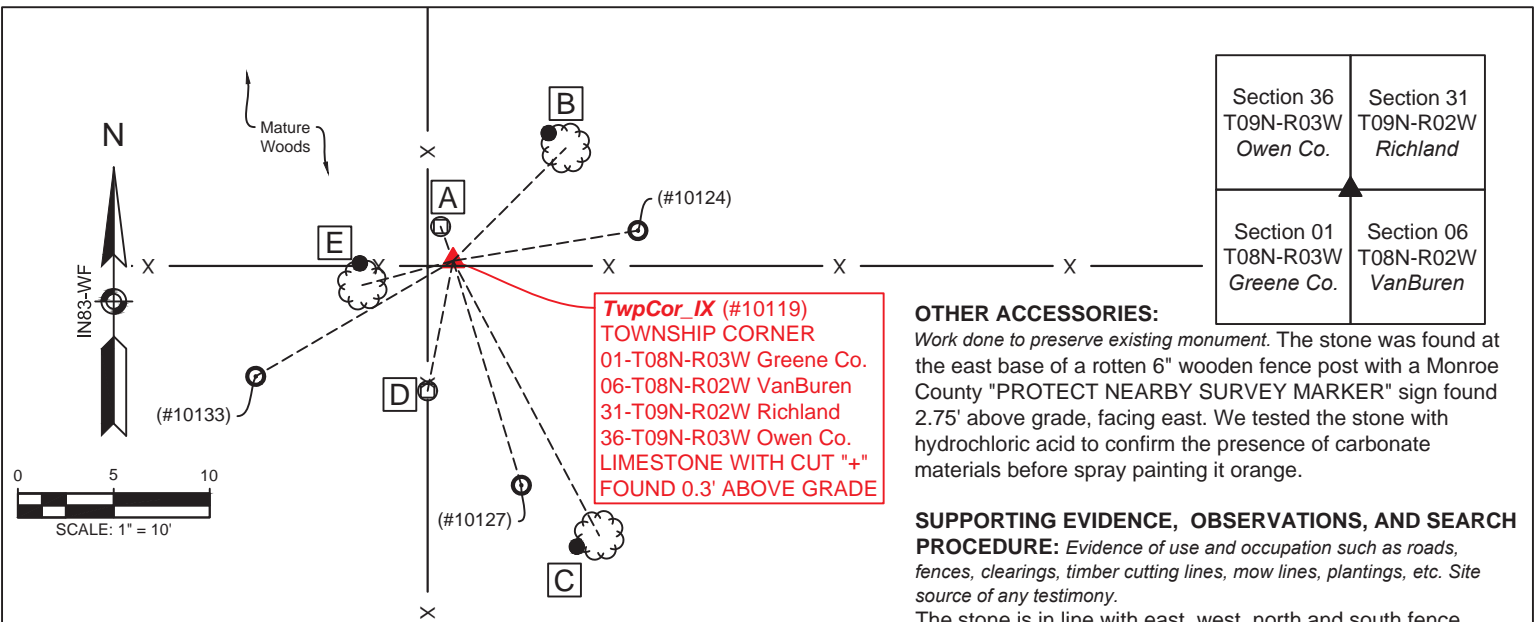
- Variances in the Monuments: In 1998 a wood post is referenced marking this corners versus the stone is consistently held from 1978 to the time of this survey.
- Discrepancies in the Documents: None
- Inconsistencies in the lines of Occupation: None
- Theoretical Uncertainty (Random Errors in Measurement): The relative positional accuracy of this survey is within that allowable for a Rural class survey (0.26' plus 200 PPM) as defined I.A.C. Title 865

PHOTO IDENTIFIED:

Photo Date: 3/27/2024

Looking West





TwpCor_IX (#10119)
TOWNSHIP CORNER
 01-T08N-R03W Greene Co.
 06-T08N-R02W VanBuren
 31-T09N-R02W Richland
 36-T09N-R03W Owen Co.
LIMESTONE WITH CUT "+"
FOUND 0.3' ABOVE GRADE

OTHER ACCESSORIES:

Work done to preserve existing monument. The stone was found at the east base of a rotten 6" wooden fence post with a Monroe County "PROTECT NEARBY SURVEY MARKER" sign found 2.75' above grade, facing east. We tested the stone with hydrochloric acid to confirm the presence of carbonate materials before spray painting it orange.

SUPPORTING EVIDENCE, OBSERVATIONS, AND SEARCH PROCEDURE:

Evidence of use and occupation such as roads, fences, clearings, timber cutting lines, mow lines, plantings, etc. Site source of any testimony.

The stone is in line with east, west, north and south fence.

VICINITY DESCRIPTION:

Corner location relative to nearby features and how to reach the corner - note fences, roads, timber, streams, topo changes, etc.

From the cell tower at the end of Hendricks Circle (aka Short Road) take the ATV trail north through the pine forest.

NOTES:

1. Field work was performed on March 22, 2018.
2. Monroe County Surveyor's Field Book 51, page 48.
3. Project Name: INDOT Network 2018, Field work by: RSO & ERS, Drawn by: RSO, Reviewed by: RSO, TER & SRB.
4. The basis of bearings is Grid North NAD83(2011), Indiana West Zone, Epoch 2010.0000, Geoid Model G2012BU7, Datum NAD83_NO_TRANS, US Survey Feet, derived from GPS observations utilizing the Indiana Real-Time Network (INCORS). Distances obtained with GPS have not been adjusted to ground. Coordinate data was collected with a Javad Triumph LS Network Rover.
5. Distances were measured with a Leica Disto laser distance meter. Bearings to witness ties were collected with the internal magnetic compass of the Javad Triumph LS and were automatically adjusted to grid north.
6. Vicinity sketch was compiled per 2014 aerial photography.
7. This monument was witnessed by the Monroe County Surveyor, Edmund Farkas on February 4, 1991 and again by Kevin Enright, on April 26, 2006. The origin of this stone is unknown. Jess Gwinn looked into the history of this stone in July of 2017, and the oldest reference that he uncovered in Greene, Owen, and Monroe Counties was the 1978 right-of-way plans for State Road 43.

WITNESS MONUMENT TIES

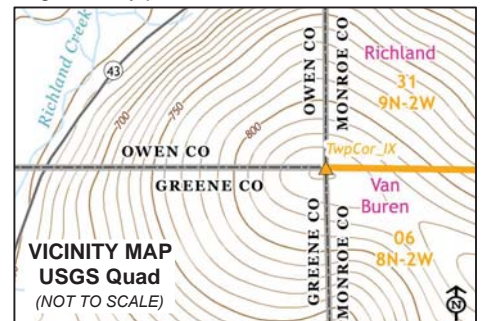
All ties to new Bearing Trees (BTs) are a mag nail set in a 2" metal shiner and hack mark at the root crown (less than 12" above ground) perpendicular to the center of the tree, unless otherwise noted. BT diameters are noted as dbh and are measured approximately 4.5' above ground. Bearings are measured from the monument to the center of the BT, distances are measured from the monument to the mag nail.

ID	BEARING	DIST.	DESCRIPTION
Witness A	N 20d W	1.9'	Steel U-Post with Owen County Survey Sign found 4.6' above grade facing west
Witness B	N 45d E	8.3'	PK nail found 1.5' above grade on the west side of an 8" shagbark hickory. Removed pk nail and replaced it with a mag nail
Witness C	S 28d E	16.2'	Mag nail and shiner set 1.4' above grade in hack on the southwest side of a 16" red oak
Witness D	S 11d W	6.9'	PK nail and flagging found 0.5' above grade on the east side of an 11" round wood fence post
Witness E	S 75d W	4.9'	20d nail found in hack in the north root of an 11" tight-bark hickory

MONUMENT ACCESSORIES

Other survey grade monuments that were located in the vicinity and their relation to the monument.

(#10124)	N 80d41'39" E	9.75'	5/8" rebar with red plastic cap stamped "WITNESS" found 0.4' above grade
(#10127)	S 16d55'13" E	12.21'	5/8" rebar with red plastic cap stamped "WITNESS" found 0.5' above grade
(#10133)	S 59d40'5" W	11.91'	5/8" rebar with red plastic cap stamped "WITNESS" found 0.3' above grade



Monument Description: 0.6' x 0.3' cut limestone with very deep cut + found 0.3' above grade

State Plane Grid Coordinates: Point No.:10119 Northing: 1427056', Easting: 3066207'

SHEET 1 OF 2	MONUMENT RECORD	Township Corner	OFFICE OF THE MONROE COUNTY SURVEYOR
	CORNER ID: TwpCor_IX		

Photos were taken on 3/22/2018 with an iPhone 6s



TwpCor_IX



Looking west at TwpCor_IX



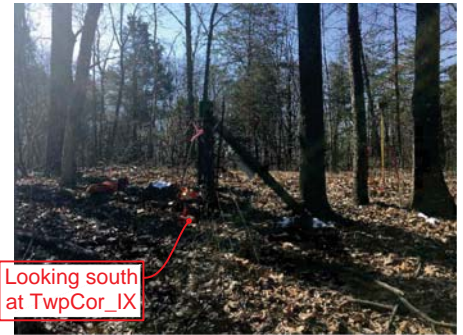
Looking north at TwpCor_IX



TwpCor_IX (#10119)
TOWNSHIP CORNER
 01-T08N-R03W Greene Co.
 06-T08N-R02W VanBuren
 31-T09N-R02W Richland
 36-T09N-R03W Owen Co.
LIMESTONE WITH CUT "+"
FOUND 0.3' ABOVE GRADE

Cell Tower

2017 ORTHOPHOTO
 (SCALE 1" = 400')



Looking south at TwpCor_IX



Looking east at TwpCor_IX



Trohn Enright-Randolph
 Trohn Enright-Randolph
 Monroe County Surveyor



Accepted by the Monroe
 County Surveyor Review Board
 on 12/06/2018



Rachel Oser
 Rachel Savich Oser, State of Indiana
 Professional Surveyor No. 21100022

SHEET
 2
 OF
 2

MONUMENT RECORD
 CORNER ID:
TwpCor_IX

Township Corner

Common to Sections 01-T08N-R03W Greene Co. &
 36-T09N-R03W Owen Co. & 06-T08N-R02W VanBuren Twp.
 & 31-T09N-R02W Richland Twp., Monroe Co., Indiana



OFFICE OF THE MONROE COUNTY SURVEYOR
 Trohn Enright-Randolph Monroe County Surveyor
 Rachel Savich Oser Professional Surveyor
 119 West 7th Street, Bloomington, Indiana 47404 (317) 349-2570

MONUMENT RECORD

IX

STATE OF INDIANA - COUNTY OF MONROE

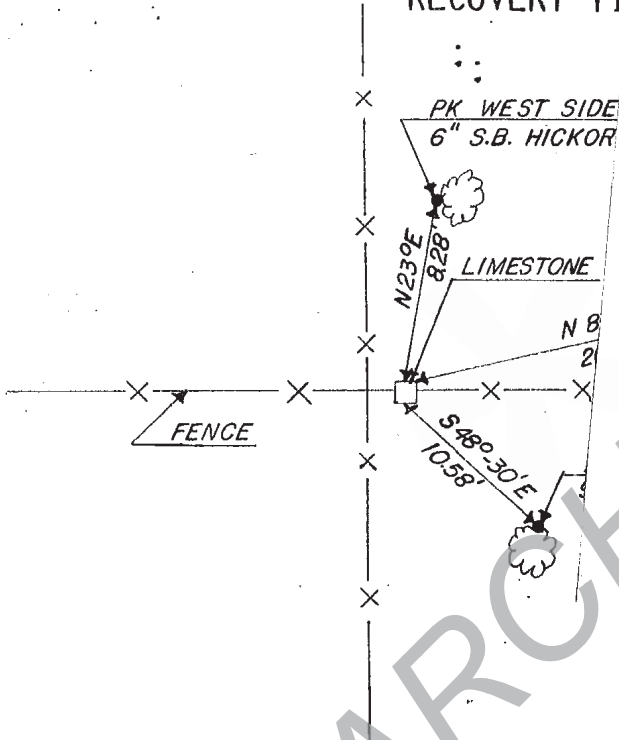
SECTION _____, TOWNSHIP _____, RANGE _____

MONUMENT DESCRIPTION & REMARKS

FOUND LIMESTONE WITH "X" SOLID IN GROUND (CUT LIMESTONE)

STONE= 0.6' x 0.3' x 0.3' OUT OF GROUND

RECOVERY TIF DRAWING



SW CORNER
SECTION 31
9N/2W

UPDATED:
CHISELED "X"
NEEDS
MONUMENT

CORNER



NOT TO SCALE

STATE OF INDIANA

COUNTY OF MONROE

I, EDMUND O. FARKAS HEREBY CERTIFY THAT THIS DOCUMENT WAS PREPARED UNDER MY DIRECTION IN ACCORDANCE WITH THE PROVISIONS OF SECTION 17-3-64-4 - 17-3-64-8 OF THE INDIANA CODE, BEING ACTS OF 1965, CHAPTER 319; AND THE ABOVE DATA IS GIVEN UNDER MY HAND AND SEAL THIS 4 TH DAY OF FEBRUARY, 19 91 A.D.

SPACE RESERVED FOR RECORDING OFFICER.

INDIANA REGISTERED LAND SURVEYOR NO. _____

OR _____

TOWNSHIP:
RICHLAND

UNITED STATES GOVERNMENT AGENCY

STATE OF INDIANA - COUNTY OF MONROE

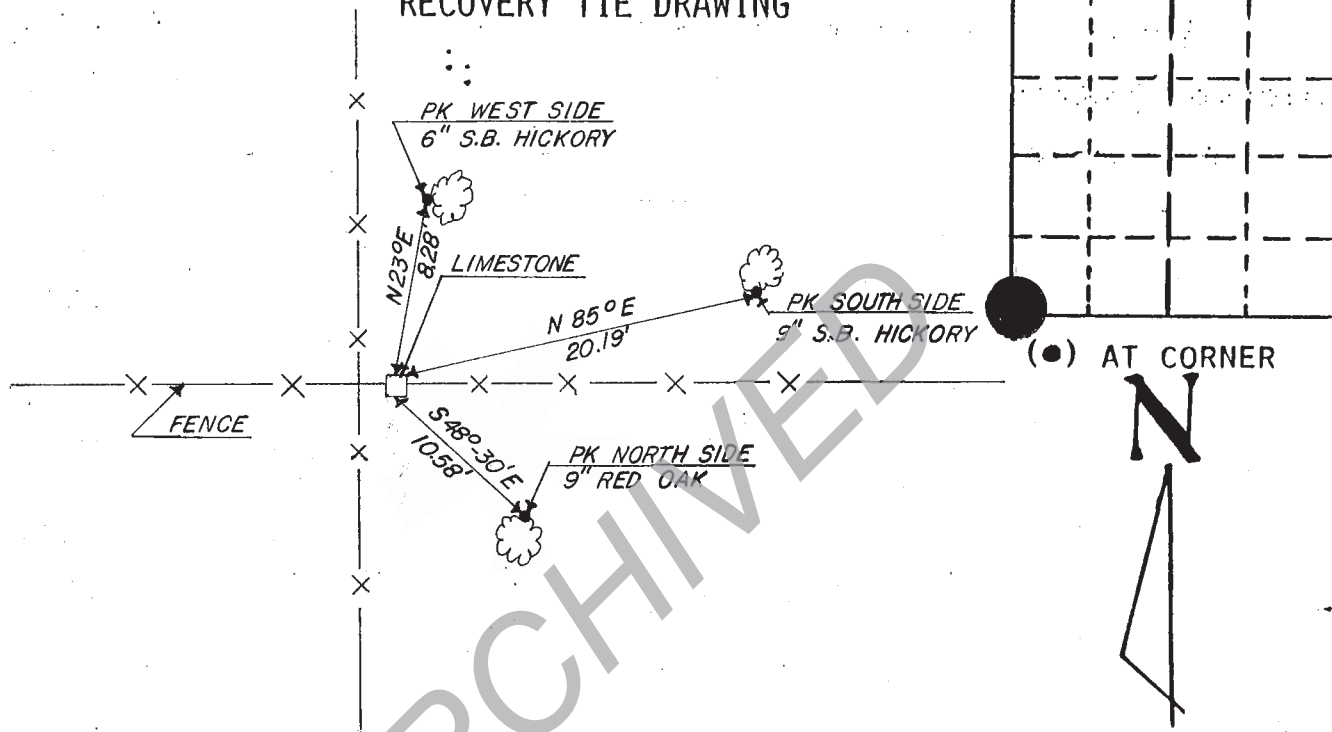
SECTION 31, TOWNSHIP 9 N, RANGE 2 W

MONUMENT DESCRIPTION & REMARKS

FOUND LIMESTONE WITH "X" SOLID IN GROUND (CUT LIMESTONE)

STONE= 0.6' x 0.3' x 0.3' OUT OF GROUND

RECOVERY TIE DRAWING



STATE OF INDIANA

COUNTY OF MONROE

I, EDMUND O. FARKAS HEREBY CERTIFY THAT THIS DOCUMENT WAS PREPARED UNDER MY DIRECTION IN ACCORDANCE WITH THE PROVISIONS OF SECTION 17-3-64-4 - 17-3-64-8 OF THE INDIANA CODE, BEING ACTS OF 1965, CHAPTER 319; AND THE ABOVE DATA IS GIVEN UNDER MY HAND AND SEAL THIS 4 TH DAY OF FEBRUARY, 19 91 A.D.

SPACE RESERVED FOR RECORDING OFFICER.

INDIANA REGISTERED LAND SURVEYOR NO. _____

OR _____

UNITED STATES GOVERNMENT AGENCY

TOWNSHIP: RICHLAND

CORNER I.D.

TITLE

A-25

DRAFT

MONUMENT RECORD
State of Indiana - County of Monroe

Section: 31

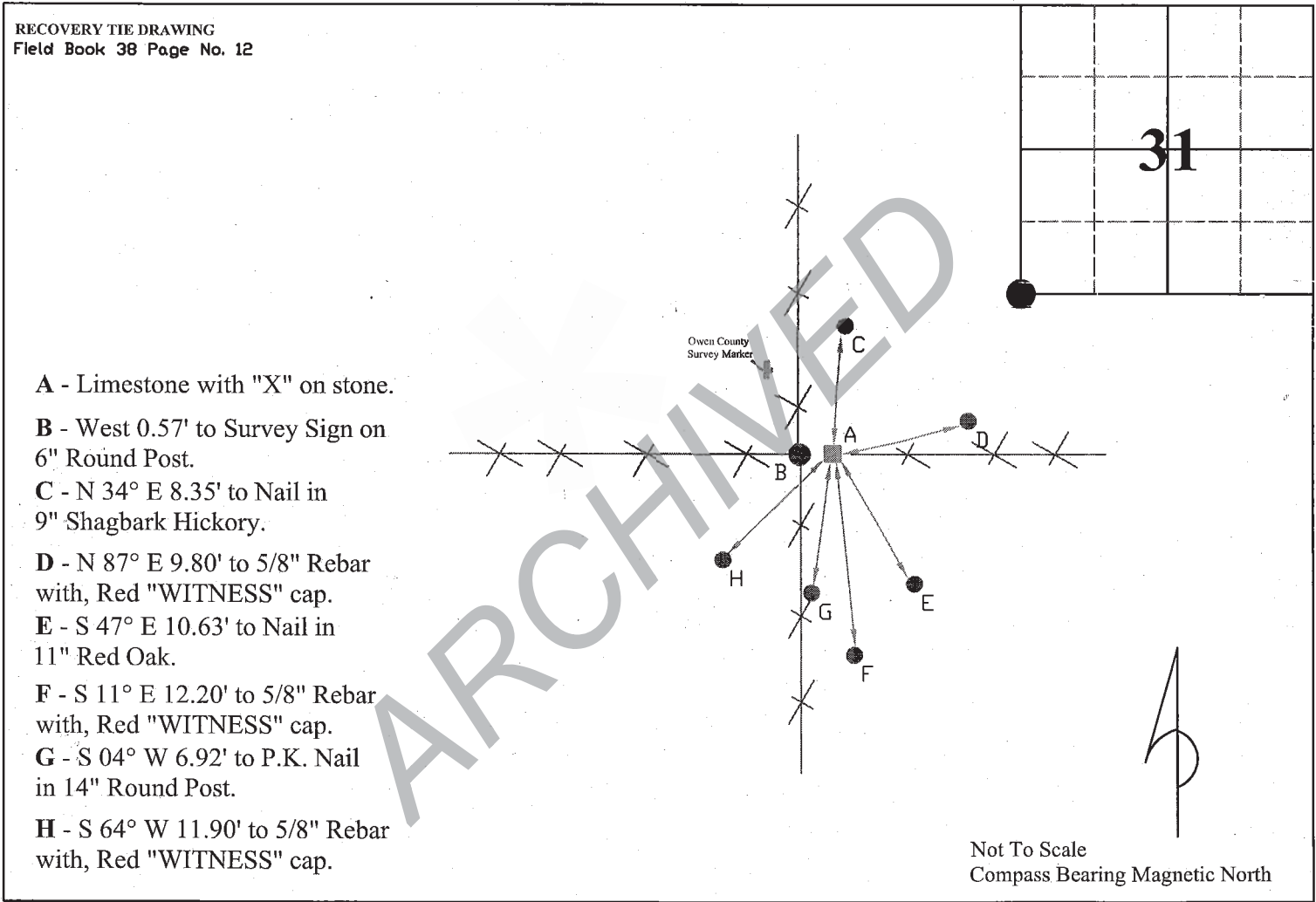
Township: 9 North

Range: 2 West

Corner ID: TwpCor IX

Monument Description & Remarks: Limestone, height; 0.10ft, length; 0.55ft, width; 0.35ft, with "X" on stone. Survey Sign 3ft A.G. at Pt. (B).

References On File:



I, Kevin P. Enright, Monroe County Surveyor, hereby certify that this document was prepared under my direction in accordance with the provisions of section 36-2-12-11 of the Indiana Code; and the above data is given under my hand and seal this 26th day of April, 2006.

Administered by the Monroe County Surveyor Review Board

Date: _____