



AGENDA
SURVEYOR REVIEW BOARD
HYBRID MEETING
Via Microsoft Teams
Tuesday, September 17, 2024

- I. Call to Order**
- II. Approval of agenda**
- III. Approval of minutes from August 20, 2024**
- IV. New Business**
 - a. Office Update
 - b. Board Member Questions?
 - c. BeBl_K09 Mike Sheppard
- V. Certification of corners:**
 - a. Corner Documentation Program: **N/A**
 - b. County Surveyor Perpetuation: **BeBl_E06, BeBl_E07, BeBl_F07, BeBl_G05, BeBl_G07*, BeBl_G08, BeBl_G09*, BeBl_H07, BeBl_I05, BeBl_I06, BeBl_I07, BeBl_I08, BeBl_I09**
 - c. Professional Services Agreement:
- VI. Public input**
- VII. Adoption of next meeting date**
- VIII. Adjournment**

**Has previous certification*

Teams Meeting Information

https://teams.microsoft.com/l/meetup-join/19%3ameeting_MzRkODI1M2QtMjVjVks0NDdJLTk5NjktOGE2Mzg2NWZhNTQx%40thread.v2/0?context=%7b%22id%22%3a%2249a60700-4c0c-4ece-b904-fb92c600e553%22%2c%22oid%22%3a%22db83725f-c48f-476f-8894-d4bb087d29f8%22%7d

Meeting ID: 247 640 086 109

Passcode: BTv9wR

Or call in (audio only)

[+1 872-242-9432](tel:+18722429432), [225452587#](tel:+1225452587) United States, Chicago

[Find a local number](#) [Reset PIN](#)

The meeting is open to the public. Dates are subject to change.

For additional information, please call the Office of the Monroe County Surveyor at (812) 349-2570.

Anyone who requires an auxiliary aid or service for effective communication, or a modification of policies or procedures to participate in a program, service, or activity of Monroe County, should contact Monroe County Title VI Coordinator, (812) 349-2553, as soon as possible but no later than forty-eight (48) hours before the scheduled event.

Individuals requiring special language services should, if possible, Government Title VI Coordinator at least seventy-two (72) hours prior to the date on which the services will be needed.

Survey Utility



MINUTES
SURVEYOR REVIEW BOARD
HYBRID MEETING
Via Microsoft Teams
Tuesday, August 20, 2024

MEMBERS PRESENT: Eric Deckard, Rachel Oser

MEMBERS ABSENT: Todd Borgman

STAFF: Trohn Enright-Randolph, Jason George, Donna Barbrick, Mike Sheppard, TSD

OTHERS: none

- I. Call to Order: 4:03 by Trohn Randolph-Enright**
- II. Approval of Agenda: MOTION to approve by Eric Deckard; second by Oser. VOTE: AYE (unanimous). Agenda approved.**
- III. Approval of Minutes. MOTION to approve by Deckard; second by Oser. VOTE: RECUSE-1 (Deckard); YES-1 (Oser). Motion carried.**
- IV. New Business**
 - a. Office Update.**

Trohn gave a brief update, saying Soft Touch moved over MCSO documents. He said Emily Clough may be helping to file those in the annex. Trohn said we will spot check our index as the project moves along. Oser said there are a lot of mistakes on what is temped up and added to the database. Trohn talked about setting up a 123 Survey. He said Emily has been building out a new Experience Builder to mimic the survey utility. He said we can build a way for users to report errors.

He said we can potentially start removing physical copies of duplicates. He welcomed suggestions or advice. There was a discussion of merging two databases into one.

Trohn said our Corner Perpetuation fund has dropped off a bit recently. He said we therefore reduced the budget but we could go back for additional appropriation.

- V. Certification of Corners**
 - a. Professional Services Agreement: Rich_A15*, Rich_A17*, Rich_A19*, Rich_A21, Rich_A23*, TwpCor_IX, Rich_C15*, Rich_C17*, Rich_C19, Rich_C21, Rich_C23*, Rich_C25*, Rich_E15, Rich_E17*, Rich_E19, Rich_E21, Rich_E23*, Rich_E25***
**Has no previous certification*

Deckard suggested starting in Section 19. He noted some corners were already reviewed and approved prior to this. He talked about establishing A15 with a split. He said he contacted another surveyor regarding a point that he disagreed with. He said so that was line A.

Rich_C17. Deckard talked about how this corner was established. He said we calculated a split between E17 and A17. He said there is an iron pipe that has an A. He noted a typo on the survey that should have been removed. He said we used that pipe as a point of alignment. Sheppard had a question about a distance and using a pipe of unknown origin as a break in that line. Deckard said Graham had done survey work in this area. He suggested going back and looking at those Graham surveys. He also suggested pulling deeds in the area.

There was a discussion of breaking a line and holding or not holding a fence line. Sheppard questioned whether the Graham pipe was set correctly. Deckard said he thought a question on C17 would only affect that one line. He suggested coming back to C17. He said I don't think that C-17 is going to affect the center of 19 any more than it's going to affect the center of 30. He said the center of 30 is actually a stone found.

Rich_E15. Deckard went onto Line E in section 19. He said all of these are found rebars. He said for Rich_E15, a rebar was found without markings and was red in color. He said it appeared to be very close to being equal distance split along that line and within close proximity of where BG would have set it at. Trohn displayed an older tie sheet and said it looks like the same monument.

Rich_E17. Deckard said this was witnessed before by other surveyors however it had been disturbed. He said we did not recover the stone, but we did recover the rebar and we believe that this was at the location of the stone at the time that the other surveyor had witnessed it.

Oser suggested a motion. MOTION by Oser to approve the Rich_A15, Rich_A17, Rich_C15, Rich_E15, Rich_E17 and to table Rich_C17 to the next meeting. Deckard seconded. VOTE: RECUSED-1 (Deckard); YES-1 (Oser). Motion carried.

Rich_A19. Deckard talked about the evidence marking that line and said our marker is on the line between two stones.

Rich_A21. Deckard said this was a stone found. Trohn brought up older tie sheets that mentioned a found sandstone by Edmund Farkas.

Rich_C19 and Rich_C21. Deckard said these were found stones.

Rich_E19. Stone found.

Rich_E21. Also a found stone.

MOTION by Oser to approve Rich_A19, Rich_A21, Rich_C19, Rich_C21, Rich_E19, and Rich_E21. Second by Deckard. VOTE: YES-1 (Oser); RECUSE-1 (Deckard). Motion carried.

Rich_A23. Deckard said this was calculated using a conventional method except it was held online here between the rebar found in what would be in Section 36 in Owen County.

Twp_Cor IV. Deckard said this has been tied off several times before and we had no problems here.

Rich_C21. Deckard said this was used to establish the center of Section 31. He said we used an intersecting line here between C21 and C25 and an intersecting line between A23 and E23 and that's how the rebar would have been established.

Rich_C25. Deckard said this one was complicated. He said we pushed this line to the south. He said we found previous survey work in the Southeast quarter. Sheppard said I am not sold that that's where it was originally established, but that's where it matches with all the current deeds and occupation. Deckard talked about surveys by Lee Utt and how he had established the lines in this area.

Rich_E23. Deckard said this was proportioned between E25 and E21 and that he relied on a Bynum Fanyo survey to the south along the line of Section 6 and Section 5. Sheppard said he had looked at that survey. There was a discussion about proportioning between a 16th corner and a section corner. Deckard said in this case using the pipe as the bearing was the best evidence. Oser said there was a talk at a convention two years ago about breaks at a 16th corner and the consensus was very split among surveyors at the talk. Trohn commented that, since he has been with MCSO, the county has been perpetuated in a

manner that makes it more difficult to hold more recent monuments, but we are not in a property rights way of thinking. He said at the same time we have to look at how we are disrupting things, so we don't create a lot of discrepancies or civil issues. There was a discussion of surveyors who have accepted the pipe. Oser said she was ready to make a motion.

MOTION by Oser to APPROVE Rich_A23, Rich_C23, Rich_E23, Twp Cor IV, Rich_C25, and Rich_E25. SECOND by Deckard. VOTE: YES-1 (Oser), RECUSE-1 (Deckard). Motion carried.

II. Public input

III. Adjournment/Adoption of next meeting date: September 17.
Adjournment at approximately 5:30 pm.

Minutes approved: _____

Secretary: Donna Barbrick

NOTES:

- Field work was performed in March thru October, 2024.
- This document is not complete without the associated report of survey.
- Interior quarter-section corners, sixteenth-section corners and corners of minor subdivisions were not evaluated in any way unless shown hereon or specifically discussed in the report of survey. Bearing breaks may exist between section corners and quarter corners that are not shown. Bearings and distances are shown hereon to correlate corners and to assist in corner analysis.
- Basis of Bearings: Unless noted otherwise, the basis of bearings is Grid North NAD83(2011), Indiana West Zone, Epoch 2010.0000, Geoid Model G2012BU7, Datum NAD83_NO_TRANS, US Survey Feet, derived from GPS observations utilizing the Indiana Real-Time Network (INCORS). Coordinate data was collected with a Javad Triumph LS Network Rover and/or with a Sokkia Set 510 Total Station radially from points located with GPS. Distances obtained with GPS have not been adjusted to ground. To adjust grid distances to ground distances multiply them by a scale factor of 1) 1.00041208.

CERTIFICATION:

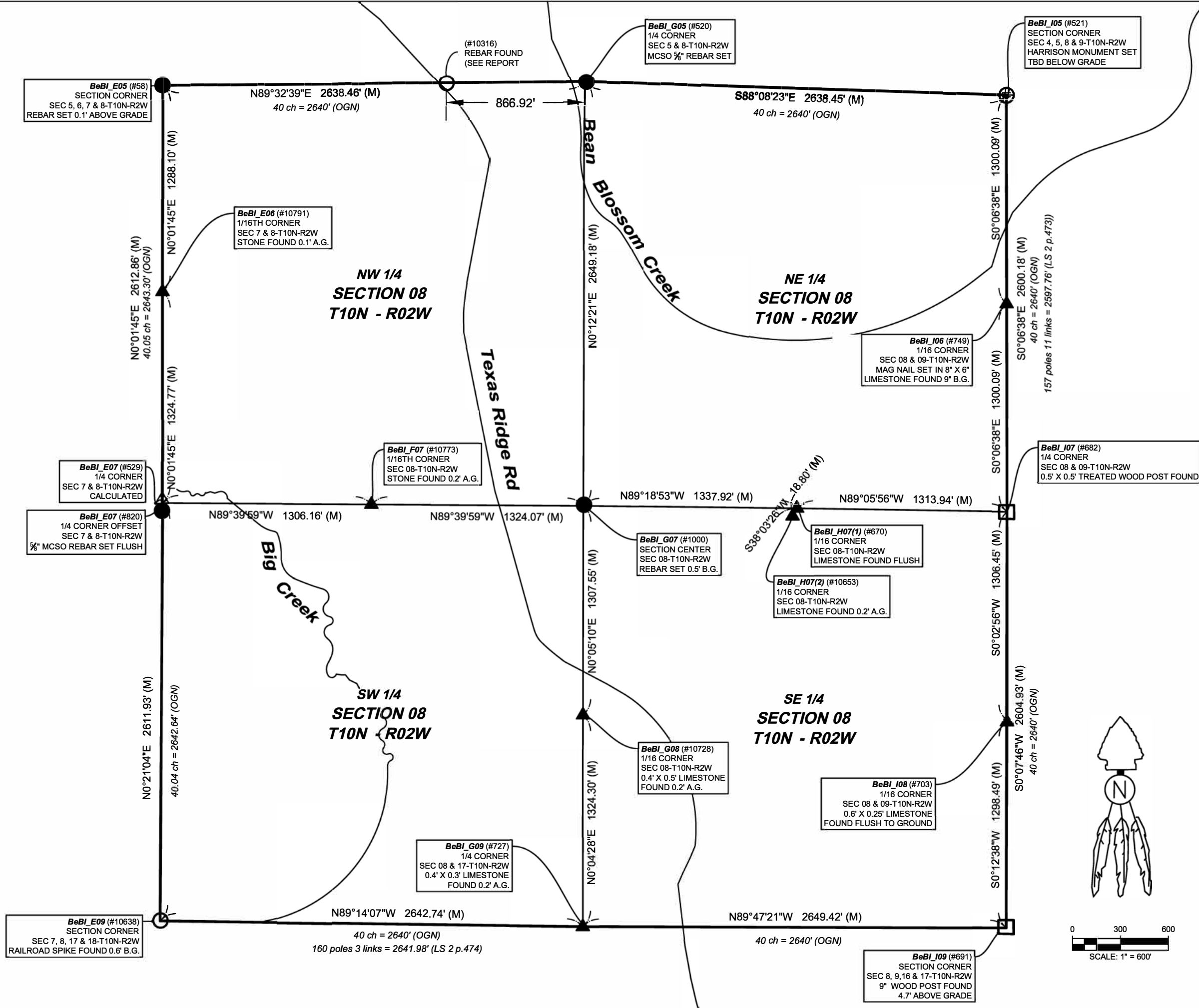
I hereby certify that to the best of my knowledge, ability and belief the within plat and report represent a survey made by me in accordance with Title 865, Article 1, Chapter 12 of the Indiana Administrative Code and completed on September 17, 2024.

Michael E. Sheppard
Professional Surveyor
No. 20100021
State of Indiana
msheppard@co.monroe.in.us



LEGEND:

- (M) Measured Distance
- (R-1884) Record Distance
- (OGN) Original Government Notes
- (C) Calculated Distance
- (CR) Calculated from Record
- RICH_U17** Corner Reference ID
- (#283) Survey Point Number
- A.G. Above grade
- B.G. Below grade
- ⊕ Harrison Monument
- Iron Monument Found
- Iron Monument Set
- ⊙ Iron Pipe Found
- ⊗ Mag Nail / Mag Spike
- Post Found
- ▲ Stone Found
- Line not to scale



I affirm, under the penalties for perjury, that I have taken reasonable care to reduce each Social Security Number in this document, unless required by law, *as shown*. E. Sheppard

OFFICE OF THE MONROE COUNTY SURVEYOR
 Trohn Enright-Randolph, Monroe County Surveyor
 501 N Morton Street Ste 205
 Bloomington, IN 47404 (812) 349-2570
 Saved on: Sep 10, 2024 Plotted on: Sep 10, 2024

MONROE COUNTY
 INDIANA GOVERNMENT

Project: 2024-001
 Field work by: MES, JMG & WEP
 Drawn by: JMG
 Reviewed by: MES, TER, SRB

CORNER PERPETUATION SURVEY
SECTION 08 - T10N - R02W
 Bean Blossom Township
 Monroe County, Indiana

SHEET 1 OF 3
 File path: N:\Monument_Records\T10N_R02W_BeanBlossom000_S-T-R08-T10N-R02W\Draw08-T10N-R02W\3D2024_PerpetuationSurvey.dwg

REPORT OF SURVEY:

In accordance with Title 865, Article 1, Chapter 12 of the Indiana Administrative Code, the following observations and opinions are submitted regarding the various uncertainties in the locations of the corners established by this survey as a result of availability and condition of reference monuments, occupation or possession lines, and clarity or ambiguity of the record descriptions and plats. There may be unwritten rights associated with these uncertainties. Any uncertainty associated with the corners shown hereon is inherently passed to any parcel corner dependent on its position. The Relative Positional Accuracy in the location of points shown on this survey is within that allowable for a rural survey (0.26 feet + 200 ppm) as defined by Title 865, Rule 12 of the Indiana Administrative Code.

The purpose of this survey is to perpetuate the section/half section corners in Section 8-T10N-R02W, 2nd Principal Meridian, Bean Blossom Township, Monroe County, Indiana. Interior quarter-section corners, sixteenth-section corners, and corners of minor subdivisions were not evaluated in any way unless specifically discussed herein. The relationship of the section/half section corners to the adjoining parcel boundary lines was not addressed. Occupation lines in the immediate vicinity of the monuments found or set are shown on the associated Monument Records on file in the Office of the Monroe County Surveyor.

Reference survey records were obtained from the Monroe County Surveyor, Monroe County Recorder, Monroe County Auditor, Monroe County Planning, Monroe County Highway Department, and the U.S. Army Corps of Engineers. Surveys consulted are included in the history section pertaining to each monument. Reference Survey ID numbers refer to the Monroe County Surveyor's Reference Survey Database and Instrument numbers refer to the Monroe County Recorder's Database, unless noted otherwise.

MONUMENTS FOUND OR SET:

Monuments and corners discovered, analyzed, evaluated and used in the process of this survey, the theory of location used to accept or establish these monuments and corners, and this surveyor's opinion of the uncertainties associated with these monuments and corners are as follows:

BeBl_E05, Northwest corner section 8 Township 10 North Range 2 West, (#58) 5/8" rebar (24" long) with 2" diameter aluminum cap set, with top left 0.1' above ground, in the hole formed from a large nail found and removed. The rebar is in an old north-south fence remnant line, 1.6' south of the center of a wood corner post at north-south and northwest fence corner. The nail found this survey appears to be the same nail found by Monroe County Surveyor Kevin Enright on February 5, 1997, per field book #26 (97-01), page 39, in the Monroe County surveyors office. At a visual look of the area, I first thought it odd that the nail was 1.6' south of the fence corner, but in Mr. Enright's 1997 notes, he notes "barn nail in ground at old fence post corner, railroad tie well weathered and rotted off at bottom". As such it appears that there was an older corner post at this location in 1997, that is now gone, at the corner of old north-south and east fences. Mr. Enright also notes an old limestone corner stone found lying on the ground approximately 45' to the south, with a cross on it. He then notes picking the stone up and moving the stone and laying it by the nail. Mr. Enright revisited the location on November 5, 1999, per field book #31 (99-01), page 64, in the Monroe County surveyor's office and made references to the nail, then citing it as a 20-penny nail. He also notes moving the old corner stone lying on the ground and leaning it against a corner post. The stone appears to have been kicked around a couple times since then and was observed laying on the ground to the Northwest. The stone has been called a corner stone and used by at least 2 different surveyors in modern history. I probed around the nail in hopes perhaps there was still a base of the old stone left buried but found nothing. I did observe the ground around the nail was very soft, leading me to hypothesis this is where the old corner post that used to be at the old north-south-east fence intersection was. More detailed information about this corner, including the corners known history, location relative to occupation lines, reference ties, State Plane coordinates, photos etc. is available on a Monument Record card in the Monroe County Surveyors Office and on their online Monroe County Surveyor utility site.

BeBl_G05, North quarter corner Section 8 Township 10 North Range 2 West, (#520) 5/8" rebar (24" long) with 2" diameter aluminum cap inscribed MONROE COUNTY SURVEYORS OFFICE SHEPPARD PLS #20100021, set, with top flush with ground, 14' East of the East top of bank of Bean Blossom creek. The rebar was set on the extension of a line from a rebar set in place of a found and removed nail at an old fence corner at the Northwest corner of Section 8/Southwest corner of Section 5 (#58 BeBl_E05) through a rebar with metal cap (#10316) found on the East side of Texas Ridge Road, 1771.54' East of said BeBl_E05, and at an equidistant split (as near as possible) between said BeBl_E05 and a Harrison monument set in a crop field at the Northeast corner of Section 8/Southeast corner of Section 5, (#521 BeBl_I05). I had established and set this corner in a similar method in a prior survey dated June 28, 2019, later revised into a minor subdivision and recorded in instrument #2024004521 (RSID005463), however I was proportioning from said BeBl_E05 to a row of posts near BeBl_K05. In reviewing my prior work, it also appears I had a poor-quality GPS shot on the rebar at #10316. The result is I set my rebar N79° 05' 21"E 13.7' from where I established the Quarter corner this survey, after having a much larger picture of surrounding Section corner locations than my prior traverse revealed. It is noteworthy that though the exact history or method of establishment of the rebar at #10316 is not known, it is in considerable agreement with the alignment of an occupation line fence that begins on the West side of Texas Ridge road and runs all the way to said BeBl_E05 and the rebar was found to have been used by multiple surveyors as a point on the Quarter Section line. More detailed information about this corner, including the corners known history, location relative to occupation lines, reference ties, State Plane coordinates, photos etc. is available on a Monument Record card in the Monroe County Surveyors Office and on their online Monroe County Surveyor utility site.

BeBl_I05, Northeast corner Section 8 Township 10 North Range 2 West, (#521) Harrison monument set below ground in a crop field. The Harrison monument was set at the extension of and double the distance of a line beginning at the treated wood post found marking the


East quarter corner Section 8/West quarter corner Section 9 (#682 BeBl_I07) through the stone found at #749 (BeBl_I06), since Legal Survey Book 2, Page 473 notes a Stone at this Section corner (BeBl_I05) and that the stone at BeBl_I06 was "set at 1/2 distance between NW corner and W ½ m post" (referring to Section 9). Thus, reestablishing the corner in this method follows in the footsteps of Monroe County Surveyor M. H. Buskirk's 1889 survey, as near as possible. More detailed information about this corner, including the corners known history, location relative to occupation lines, reference ties, State Plane coordinates, photos etc. is available on a Monument Record card in the Monroe County Surveyors Office and on their online Monroe County Surveyor utility site.

BeBl_I06, Southeast corner Northeast quarter Northeast quarter, aka Northeast corner Southeast quarter Northeast quarter Section 8 Township 10 North Range 2 West, (#749) Mag nail driven in top of 6" north-south by 8" east-west Limestone found 9" below ground, against the north edge of an 8" north-south by 12" east-west limestone post stub found solid in the ground, (limestone post lying beside) at ancient South and North fence remnants. This appears to be the stone set by M.H. Buskirk Monroe County Surveyor, on May 2, 1889, documented in Legal Survey Book 2, Page 473 and as such the originally established location of the corner with negligible uncertainty. An E Farkas capped rebar was found N00° 33' 45"E, 66.54', from the stone, that appears to have been set by Edmund Farkas in a survey dated July 28, 1982 (RSID005502 in the Monroe County Surveyors Office). Mr. Farkas's method of establishment for his rebar is unknown and undocumented. More detailed information about this corner, including the corners known history, location relative to occupation lines, reference ties, State Plane coordinates, photos etc. is available on a Monument Record card in the Monroe County Surveyors Office and on their online Monroe County Surveyor utility site.

BeBl_I07, East quarter corner Section 8 Township 10 North Range 2 West, (#682) 0.5' by 0.5' treated wood post in concrete, at the beginning of an eastbound fence line, on the South side of an old roadbed and ± at the extension of ancient North and South fences. The post (#682) was found. The stone found at BeBl_I08 (#703) is cited in Legal Survey Book 2, page 487 as having been set midway between the West half mile corner of Section 9 and the Southwest corner of said Section. Extending a line from the post found at the Southwest corner of said Section (#691 BeBl_I09) through the stone at BeBl_I08 (#703) and doubling the distance would create a point ±8' South and 3.7' East of this post. We searched and probed this area diligently, finding numerous small limestones around and South of the post along with 1 limestone ledge, but none of the stones had survey stone characteristics. We also observed fence and remnants of an old, rotted post buried at a depth of 1 ½' on the South side of the post, which fence, and post may have been an ancient fence corner. Thus, we concluded the area had been subject to some kind of earth work at one time. The extension of and double the distance of a line from the rebar set at the center of Section 8 (from original witnesses) (#1000 BeBl_G07) through the oldest stone at BeBl_H07(1) (#670) (which is cited as having been established mid-way between the Center and East half mile corner of Section 8) would net a location ±5' North and 24' East of the Post at #682. The extension of a line from the rebar set at the center of Section 8 (from original witnesses) (#1000 BeBl_G07) through the newest stone at BeBl_H07(2) (#10653) would net a location ±25' South of the Post at #682. An online equidistant split between the sixteenth corner stones found to the North and South of the Post would net a location ±3.2' South and ±1.8' West of the Post. The extension of a line from a stone at the center of Section 9 (#10630 BeBl_K07) through a mag nail (#874) found in the center of a north-south road, at the extension of an old east bound fence line (approximate BeBl_J07) would net a location ±25' South of the post at #682. Said mag nail at #874 is 12.65' South of a straight line between the post at #682 and the stone at BeBl_K07. The mag nail is 22.2' South of a straight line between said BeBl_K07 and a rebar (#10676) that has been held by other surveyors as the corner at BeBl_I07. These facts create a large area of uncertainty surrounding the original location of this corner and this post is within the area of uncertainty in my opinion. Several other surveyors have held the fence corner on the North side of the old roadbed, and somebody set a ½" rebar at its base (#10676) which is ±19' North of the post accepted this survey. It is my opinion that the data shows this second fence corner/1/2" rebar is too far North to be considered the Quarter Section corner at BeBl_I07 and it does not appear any of these other surveyors knew the location of the stones at BeBl_I06 or BeBl_I08. It is evident somebody took great care in setting the treated post in concrete and it is, in my opinion, the most reliable evidence of the original location of the corner, though with an uncertainty of 20' north-south and 4' east-west. More detailed information about this corner, including the corners known history, location relative to occupation lines, reference ties, State Plane coordinates, photos etc. is available on a Monument Record card in the Monroe County Surveyors Office and on their online Monroe County Surveyor utility site.

BeBl_I08, Southeast corner Northeast quarter Southeast quarter aka Northeast corner Southeast quarter Southeast quarter Section 8 Township 10 North Range 2 West, (point #703) cross cut (this survey) in top of a 0.6' north-south by 0.25' east-west limestone found flush with ground, 1' west of an old wood railroad tie post at the beginning of a South bound fence line. The stone was found. It is believed to be the monument set by M.H. Buskirk Monroe County Surveyor on February 17, 1890, in Legal Survey Book 2, page 487, which survey appears to be the original establishment of the Sixteenth Section division corner. The only uncertainty this stone has in my opinion is it being ±1.8' East of a straight line between the monuments at BeBl_I07 and BeBl_I09. This is an uncertainty since Bureau of Land management rules state; "The corners set by the Surveyor General are unchangeable". The lines marked by the Surveyor General are unchangeable" and "That the boundaries and subdivision of the public lands as surveyed under approved instructions by the duly appointed surveyors, the physical evidence of which survey consists of monuments established upon the ground, and the record evidence of which consists of field notes and plats duly approved by the authorities constituted by law, are unchangeable after the passing of title by the United States." Therefore, placing an angle break in a Section line may be construed as changing it. More detailed information about this corner, including the corners known history, location relative to occupation lines, reference ties, State Plane coordinates, photos etc. is available on a Monument Record card in the Monroe County Surveyors Office and on their online Monroe County Surveyor utility site.

BeBl_I09, Southeast corner Section 8 Township 10 North Range 2 West, (#691) 9" diameter, treated, power pole type, wood post, with metal plate on top, found with top 4.7' above ground. The Post was found at an old occupation corner and thus the historically preserved, accepted and used location of the Section corner. It is known to have been used by numerous surveyors in modern history and is, in my opinion, the most reliable evidence of the original location of the Section corner common to Sections 8,9,16 & 17, originally established by the Bureau of Land Management and monumented with a wood Post in 1815, with negligible uncertainty. More detailed information about

SHEET 2 OF 3	CORNER PERPETUATION SURVEY SECTION 8 – T10N - R02W Bean Blossom Township Monroe County, Indiana	Project: 2024-001 Field work by: Michael E. Sheppard, William E. Phillips & Jason M. George Drawn by: JMG Reviewed by: MES, TER & SRB		OFFICE OF THE MONROE COUNTY SURVEYOR Trohn Enright-Randolph <i>Monroe County Surveyor</i> 501 N Morton Street Ste. 205, Bloomington, IN 47404 surveyorsoffice@co.monroe.in.us
-------------------------------------	---	--	---	--

this corner, including the corners known history, location relative to occupation lines, reference ties, State Plane coordinates, photos etc. is available on a Monument Record card in the Monroe County Surveyors Office and on their online Monroe County Surveyor utility site.

BeBl_G09, South quarter corner Section 8 Township 10 North Range 2 West, (Point #727) 0.4' north-south by 0.3' east-west peak of limestone found 0.2' above ground, with a bent 5/8" rebar, 0.8' above ground, 0.8' west. The stone is at the beginning of an ancient southbound fence remnant line. There is a steel post with Monroe County Witness sign attached, 2.5' above ground 1.5' west of the stone. The stone is believed to have been set by MH Buskirk, Monroe County Surveyor, on May 3, 1889, via Legal Survey Book 2, page 474, from a found, standing, original witness tree. The stone is, in my opinion, the most reliable evidence of the original location of the South Quarter corner Section 8/North Quarter corner Section 17, Township 10 North Range 2 West, originally established by the bureau of land management and monumented by a wood post in 1815, with negligible uncertainty. More detailed information about this corner, including the corners known history, location relative to occupation lines, reference ties, State Plane coordinates, photos etc. is available on a Monument Record card in the Monroe County Surveyors Office and on their online Monroe County Surveyor utility site.

BeBl_E09, Southwest corner Section 8 Township 10 North Range 2 West, (Point #10638) Railroad Spike found, 7" below and 2' West of the physical center of a north-south stone road. The spike was certified to and referenced by Jess Gwinn, PLS, on a Monument Record card for the Monroe County Surveyors Office in 2020, where Mr. Gwinn notes the spike is believed to be over an iron pipe that has been accepted by several other surveyors as monumenting the Section corner. Based on Mr. Gwinn's information and information obtained in this survey, this spike is in my opinion the most reliable evidence of the original location of the Section corner (originally established by the bureau of land management and monumented by a wood post circa 1815) with negligible uncertainty. More detailed information about this corner, including the corners known history, location relative to occupation lines, reference ties, State Plane coordinates, photos etc. is available on a Monument Record card in the Monroe County Surveyors Office and on their online Monroe County Surveyor utility site.

BeBl_E07, West quarter corner Section 8 Township 10 North Range 2 West, (#529) calculated location of Quarter Section corner falls in a creek. An offset corner monument (#820-5/8" rebar (24" long) with 2" diameter aluminum cap inscribed MONROE COUNTY SURVEYORS OFFICE SHEPPARD PLS #20100021), was set flush with ground, on the Section line, 25.0' South of the calculated Quarter Section corner. The corner was calculated at the intersection of lines formed from the rebar set (from original witnesses) at the center of the Section 8 (#1000, BeBl_G07) through the stone found (#749, BeBl_F07) ±midway between said center of Section and the West Quarter of said Section with the extension of a line beginning at a rebar set in place of a found and removed nail at an old fence corner at the Northwest corner of said Section 8 (#58, BeBl_E05), through an engraved stone found (#10791, BeBl_E06) between said BeBl_E05 and the West Quarter corner of said Section 8. The stone at said BeBl_F07 is cited in Legal Survey Book 2, Page 399 as having been set "Half dist bet W ½ M & center". Which is why the extension of BeBl_G07 through this stone was held to reestablish BeBl_E07. The stone at said BeBl_E06 is cited in a description of land described in instrument #2018015505 in the Monroe County Recorder's Office as "stone marked "J.B.x" at the southeast corner of the northeast quarter of the northeast quarter on the east line of said east half of Section 7". Which is why the extension of BeBl_E05 through this stone was held to reestablish BeBl_E07. The stone at BeBl_E06 is also cited as the NW corner SW ¼ NW ¼ Sec 5 (Should read Sec 8), on a survey by Bernard A. Guerrettaz II recorded in instrument #2018015505 in the Monroe County Recorder's Office, RSID005420 in the Monroe County Surveyors Office. In said survey, Mr. Guerrettaz calculated the corner at BeBl_E07 ±N16 degrees 28 minutes West 18.0' from where it was calculated this survey, (based on the distances shown on the survey plat of 1307.55' from #749 (BeBl_I06) and 1311.47' from #10773 (BeBl_F07)). Mr. Guerrettaz's survey contains no report; thus, I cannot decipher why he calculated the corner ±18' from where I did. The corner, calculated in the manner it was calculated in this survey, bears, in my opinion an uncertainty of 10' of being where it was originally established in the original survey. More detailed information about this corner, including the corners known history, location relative to occupation lines, reference ties, State Plane coordinates, photos etc. is available on a Monument Record card in the Monroe County Surveyors Office and on their online Monroe County Surveyor utility site.

BeBl_E06, Southwest corner Northwest quarter Northwest quarter aka Northwest corner Southwest quarter Northwest quarter Section 8 Township 10 North Range 2 West, (#10791) 0.4' north-south by 0.7' east-west Limestone found with top 0.1' AG. The stone has the letters JB and a + inscribed in top of it. The location taken this survey was on the +. The stone is ±1.7' East of an old north-south fence remnant line. The stone is noted in the record description of a parcel of land described in instrument #2018015505 in the Monroe County Recorder's Office as "stone marked "J.B.x" at the southeast corner of the northeast quarter of the northeast quarter on the east line of said east half of Section 7". It is also noted on a survey by Bernard A. Guerrettaz II recorded in instrument #2018015505 in the Monroe County Recorder's Office, RSID005420 in the Monroe County Surveyors Office, on said survey, it is cited as the NW corner SW ¼ NW ¼ Sec 5 (Should read Sec 8). It is also called for in the description Mr. Guerrettaz created in said survey and thus the current deed of record to the East of the stone also. Though the stone was not found to be noted in the Legal Survey Books, it is in my opinion the original monument set in the original establishment of the Sixteenth corner at BeBl_E06, with negligible uncertainty. More detailed information about this corner, including the corners known history, location relative to occupation lines, reference ties, State Plane coordinates, photos etc. is available on a Monument Record card in the Monroe County Surveyors Office and on their online Monroe County Surveyor utility site.

BeBl_G07, Center of Section 8 Township 10 North Range 2 West, 5/8" rebar (24" long) with 2" diameter aluminum cap inscribed MONROE COUNTY SURVEYORS OFFICE SHEPPARD PLS #20100021, set, 0.5' below the surface of and in the approximate center of an east-west stone drive. The rebars location was based on the Southwest corner of the foundation of an old house, which foundation sticks out past the actual house corner, and a stump, believed to be from a 1915 reference tree. A corner (actual monument not cited) is noted as being established on April 26, 1915, via Legal Survey Book 3, page 52. The corner cites 2 references, first: "NW cor foundation" N36E 62 links (±40.92'). Second 6" Mulberry S64E 108 Links (±71.28'). I believe the citation of "NW cor foundation" was recorded in error and should have read SW cor foundation, as the Southwest corner of the house foundation would have been the closest foundation corner to the established

Center of Section corner. It appears the house in place today is on the same foundation that existed in 1915. The foundation has been added on to, but where the old foundation corner meets a new porch foundation is visibly distinctive. We then found a 17" diameter stump that closely matched where the 6" mulberry was cited in 1915, based on calculating the corner from the record bearing and distance from the Southwest corner of the old foundation. I believe this stump is from the original mulberry reference tree. I researched Mulberry trees some and read numerous articles stating that though Mulberry trees are not typically noted for long life spans, Mulberry wood is very tough, durable and rot resistant, known through history as being used for fence posts and caskets even cited in the Bible, in Isaiah 40:20, as wood that will not rot. This made me even more confident of this stump being from the 1915 Mulberry. I set the rebar at record distance of 40.92' from the Southwest house foundation corner and 71.28' from the center of the stump. This location, in my opinion, fit well with surrounding monumentation and occupation lines reliant on the center of Section within an uncertainty of ±2'. We dug a 3 ½' north-south by 3' east-west hole in the drive to a depth of 1' (to the clay base) of the stone drive, in search of a stone, but found none. More detailed information about this corner, including the corners known history, location relative to occupation lines, reference ties, State Plane coordinates, photos etc. is available on a Monument Record card in the Monroe County Surveyors Office and on their online Monroe County Surveyor utility site.


BeBl_H07, Northeast corner Northwest quarter Southeast quarter, aka Southeast corner Southwest quarter Northeast quarter aka Southwest corner Southeast quarter Northeast quarter aka Northwest corner Northeast quarter Southeast quarter Section 8 Township 10 North Range 2 West, 2 stones were found at this sixteenth Section corner. (#670) herein referred to as BeBl_H07(1) because I believe it to have been set in the first subdivision of the Section by M.H. Buskirk on March 6, 1884, documented in Legal survey book 2, page 399, is a 0.4' north-south by 0.9' east-west limestone with an east-west groove across its top, found flush with ground, on the North side of an old east-west roadbed. It appears remnants of an ancient South bound fence line lines up with this stone. (#10653) herein referred to as BeBl_H07(2) because I believe it to have been set in a subsequent subdivision of the Section by Charles M. Bowers, Deputy of the Monroe County Surveyor on April 26, 1915, documented in Legal survey book 3, page 52, is a 0.5' north-south by 0.6' east-west Limestone found with its west edge (which is slightly higher than its east edge) 0.2' above ground, in the center of an old east-west roadbed. We cut a cross on top of the stone and set a 5/8" rebar with Monroe County witness point cap on top, against the stones North edge, flush with ground. An old North bound fence line lines up with this stone. Both stones were found, and both have origins in Monroe County Legal survey books. Which stone controls this corner or parcel boundaries is open to opinion and legal interpretation. This is the first time this Surveyor has seen something like this. It seems BeBl_H07(1) (#670) is the first monument set to monument this Sixteenth Section corner and a Southbound fence was built in good faith, based on its location. It appears a Northbound fence was built in good faith, based on the location of the stone at BeBl_H07(2) (#10653). How Surveyors use them as boundary corners going forward is up to each of their professional opinions. Since they are 18.8' apart, they both bear an uncertainty of that magnitude in my opinion. More detailed information about this corner, including the corners known history, location relative to occupation lines, reference ties, State Plane coordinates, photos etc. is available on a Monument Record card in the Monroe County Surveyors Office and on their online Monroe County Surveyor utility site.

BeBl_G08, Southeast corner Northeast quarter Southwest quarter aka Southwest corner Northwest quarter Southeast quarter aka Northeast corner Southeast quarter Southwest quarter aka Northwest corner Southwest quarter Southeast quarter Section 8 Township 10 North Range 2 West, (#10728) 0.4' north-south by 0.5' east-west cut limestone found with top 0.2' above ground and a cross across its top, at the west base of a 24" diameter (at base) twin pignut hickory tree at the corner of old North and East fences. Though no monument type was noted by Charles M Bowers Deputy Surveyor in Legal Survey Book 3, Page 52, it appears this is the monument he set, and this survey appears to be the survey that originally established the aliquot Section division corner at BeBl_G08, thus making it the most reliable evidence of the originally established location of said corner with negligible uncertainty. More detailed information about this corner, including the corners known history, location relative to occupation lines, reference ties, State Plane coordinates, photos etc. is available on a Monument Record card in the Monroe County Surveyors Office and on their online Monroe County Surveyor utility site.

BeBl_F07, Northwest corner Northeast quarter Southwest quarter aka Southwest corner Southeast quarter Northwest quarter aka Southeast corner Southwest quarter Northwest quarter aka Northeast corner Northwest quarter Southwest quarter Section 8 Township 10 North Range 2 West, (#10773) 0.7' north-south by 0.7' east-west Limestone found 0.2' above ground at the Southwest base of a leaning wood post at the beginning of a north bound fence line and at the extension of old east and west fence remnants. We observed a faint cross on top of the stone and with a mag nail made a dimple in the center of the cross. The Stone was I believe the stone to be the monument set by M. H. Buskirk, documented in Legal Survey Book 2, page 399. This and its location relative to existing occupation lines and other monumentation in the area makes it, in my opinion, the most reliable evidence of the originally established location of the sixteenth corner with negligible uncertainty.

Other corners searched for: BeBl_G06: Legal Survey Book 2, page 399 cites establishment of a corner Half distance between N ½ mile corner and Center of Section, in 1884. We visited this area with GPS receiver, but found no evidence of a corner, monument or any of the accessories noted in 1884. The location was in a relatively deep ravine. We found numerous stones in the area, but none that had survey cornerstone characteristics.

BeBl_E08: No reference to this corner was found in any Legal Survey books, however a survey by Guy Moore PLS dated 9/06/1986 was found in the Monroe County Surveyors Office records, that shows a stone at this corner. We were unable to find said stone, though did find a Graham PLS capped rebar (#790) 0.4' above ground, at the West base of a wood railroad tie post, 2.5' West of a straight line between the calculated corner at BeBl_E07 and the railroad spike at BeBl_E09 and 10.5' North of an equidistant split between them.

SHEET 3 OF 3	<h1 style="margin: 0;">CORNER PERPETUATION SURVEY</h1> <h2 style="margin: 0;">SECTION 8 – T10N - R02W</h2> <p style="margin: 0;">Bean Blossom Township Monroe County, Indiana</p>	Project: 2024-001 Field work by: Michael E. Sheppard, William E. Phillips & Jason M. George Drawn by: JMG Reviewed by: MES, TER & SRB		OFFICE OF THE MONROE COUNTY SURVEYOR Trohn Enright-Randolph <i>Monroe County Surveyor</i> 501 N Morton Street Ste. 205, Bloomington, IN 47404 surveyorsoffice@co.monroe.in.us
-------------------------------------	---	---	---	--

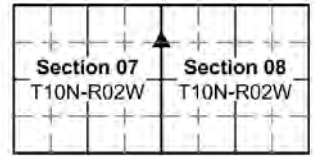
MONUMENT RECORD

Corner ID: **BeBI_E06**

Sixteenth Corner

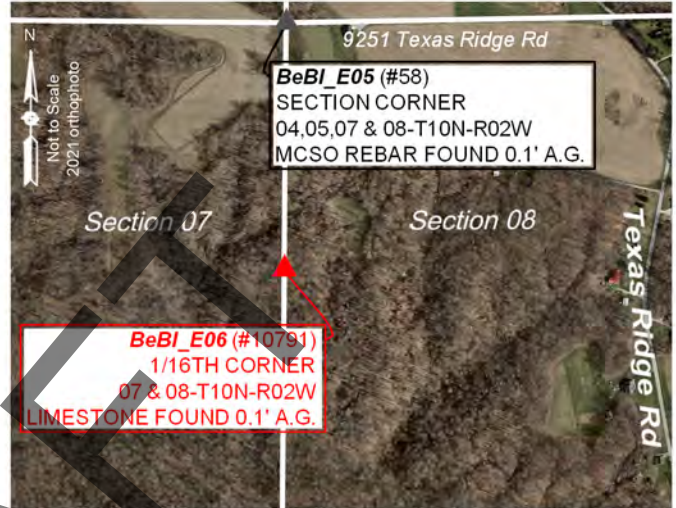
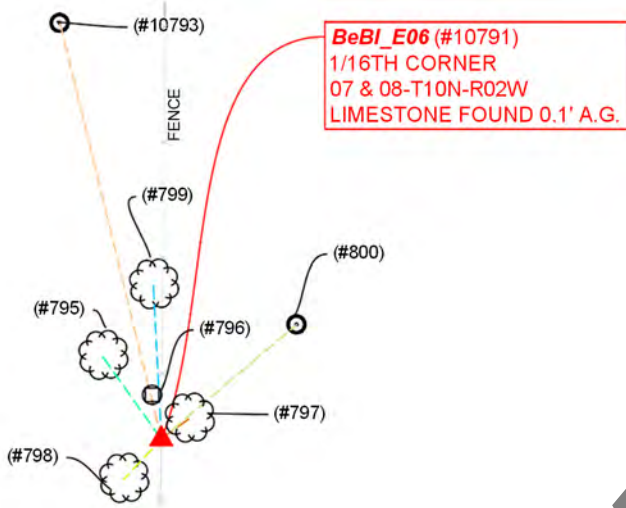
Sections 7 & 8- T10N-R02W, 2nd P.M.

Township, Monroe County, Indiana



MONUMENT: Describe monument set or found (Include material type, scribing, distance above/below grade, dimensions.) (#10791) 0.4' north-south by 0.7' east-west Limestone found with top 0.1' AG. The stone has the letters JB and a + inscribed in top of it. The location taken this survey was on the +. The stone is ±1.7' East of an old north-south fence remnant line.

MONUMENT LOCATION SKETCH:



WITNESS MONUMENT TIES: Describe at least three new BT's (Bearing Trees) and/or witness objects established or work done to preserve existing evidence. BT diameters are noted as dbh (diameter at breast height) and are measured approximately 4.5' above ground. Bearings and Distances are measured from the monument to the center of the BT. Bearings and Distances to witness ties were measured with a Sokkia Set 510 Total Station.

ID	Bearing	Distance	Description
(#797)	N54° 26'E	5.3'	6" diameter Beech tree
(#798)	S43° 12'W	8.7'	15" diameter Shagbark Hickory tree
(#795)	N35° 26'W	15.8'	16" diameter White Oak tree
(#799)	N02° 59'W	24.0'	9" diameter Beech tree in north-south fence remnants
(796)	N13° 03'W	7.1'	Steel post in old north-south fence remnants. MCSO survey marker sign attached this survey.

MONUMENT ACCESSORIES

Other survey grade monuments that were located in the vicinity and their relation to the monument. Witnesses noted as a Rebar Lite are a 5/8" diameter by 16" polycarbonate rod with a 1-1/2" mag nail in top and yellow plastic cap stamped "MONROE COUNTY WITNESS POINT" set 0.1 foot below grade unless otherwise noted.

Geodetic coordinates in this table are provided in the format Northing, Easting

(#800)	N49° 47' 04"E	27.71'	N:1483911.6015' E:3070266.8074' Rebar Lite
(#10793)	N13° 43' 56"W	66.78'	N:1483958.5780' E:3070229.7958' Rebar Lite
(#58)	N00° 01' 45"E	1288.10'	N:1485181.8058' E:3070246.3055' MCSO capped rebar at BeBI_E05



OFFICE OF THE MONROE COUNTY SURVEYOR • Trohn Enright-Randolph

501 N Morton Street Ste 205, Bloomington, IN 47404 • 812-349-2570 • surveyorsoffice@co.monroe.in.us

MONUMENT RECORD

Corner ID: **BeBI_E06**

Sixteenth Corner

Sections 7 & 8- T10N-R02W, 2nd P.M.

Township, Monroe County, Indiana

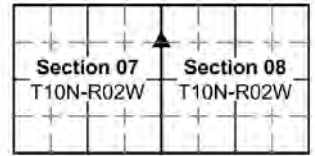


PHOTO IDENTIFIED: *Photo Date:* 07/18/2024



Photo Orientation & Description: From above



Photo Orientation & Description: From North looking South

EXISTING SURVEY HISTORY *Include as much detail and history of the corner as known at the time of perpetuation*

ORIGINAL GOVERNMENT SURVEY:

This corner was not set in the original Government Survey.

SUBSEQUENT CORNER RESTORATION:

The original establishment of this corner was not found in legal survey books in the Monroe County Surveyors Office. The stone was found to be called for in a parcel description of land described in instrument #2018015505 in the Monroe County Recorder's Office as "stone marked "J.B.x" at the southeast corner of the northeast quarter of the northeast quarter on the east line of said east half of Section 7".

OTHER SURVEY HISTORY: *Include details such as surveyor name, date, recording info, monument description, etc.*

Document Date	Survey ID	Surveyor	Description	Instrument No.
9/26/2013	RSID005420	Guerrettaz, Bernard	"Wilhite II South Type ""E"" Administrative Subdivision Plat"	2013018041.IN

ORIGINAL OR SUBSEQUENT SURVEY EVIDENCE FOUND BY THE MONROE COUNTY SURVEYORS OFFICE: *Include, search area or areas, search procedure, etc.*

Date of Field work/Search: 07/18/2024 *By:* MES/JMG *Monument Found:* Engraved Stone *BTs or Reference Objects Found:* No, but references established. *Project #:* 24-001 *Field Book:* 56, Page 72 & 73.

OTHER EVIDENCE: *Describe corner location relative to nearby features and how to reach the corner location – note fences, roads, timber cutting lines, mow lines, clearings, plantings, streams, topo changes, etc.*

We reached the Stone by walking South along an old fence line approximately ¼ mile from a cabin at 9251 North Texas Ridge Road Gosport Indiana.

MONUMENT PRESERVATION: *Describe work done to preserve existing monument.*

GPS coordinates were established on the stone. 2 Rebar Lites were set within sight of the stone that could be used to reestablish its location, should it become obliterated. Additionally, tree references were made to the stone to visually aid in finding it. A Monroe County Surveyors Office survey marker sign was attached to a steel fence post in an old north-south fence remnant line, 4.4' AG, facing South, 7.1' North of the stone.

THEORY OF LOCATION: *Describe the theory of location for acceptance of this monument. Include monument origin and associated uncertainty.*

The stone was found. It is noted in the record description of a parcel description of land described in instrument #2018015505 in the Monroe County Recorder's Office as "stone marked "J.B.x" at the southeast corner of the northeast quarter of the northeast quarter on the east line of said east half of Section 7". It is also noted on a survey by Bernard A. Guerrettaz II recorded in instrument #2018015505 in the Monroe County Recorder's Office, RSID005420 in the Monroe County Surveyors Office, on said survey, it is



OFFICE OF THE MONROE COUNTY SURVEYOR • Trohn Enright-Randolph

501 N Morton Street Ste 205, Bloomington, IN 47404 • 812-349-2570 • surveyorsoffice@co.monroe.in.us

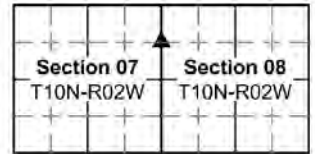
MONUMENT RECORD

Corner ID: **BeBI_E06**

Sixteenth Corner

Sections 7 & 8- T10N-R02W, 2nd P.M.

Township, Monroe County, Indiana



cited as the NW corner SW ¼ NW ¼ Sec 5 (Should read Sec 8). It is also called for in the description Mr. Guerrettaz created in said survey and thus the current deed of record to the East of the stone also. Though the stone was not found to be noted in the Legal Survey Books, it is in my opinion the original monument set in the original establishment of the Sixteenth corner at BeBI_E06, with negligible uncertainty.

GEODETTIC COORDINATES: *Northing:1483893.7', Easting:3070245.6'*

BASIS OF GEODETTIC COORDINATES:

The basis of bearings is Grid North NAD83(2011), Indiana West Zone, Epoch 2010.0000, Geoid Model G2012BU7, Datum NAD83_NO_TRANS, US Survey Feet, derived from GPS observations utilizing the Indiana Real-Time Network (INCORS). Coordinate data was collected with a Javad Triumph LS Network Rover and/or with a Sokkia Set 510 Total Station radially from points located with GPS. Distances obtained with GPS have not been adjusted to ground. To adjust grid distances to ground distances multiply them by a scale factor of 1.000041208.

This document is not complete without the associated Corner Perpetuation plat and report of survey for Section 7 or 8, Township 10 North Range 2 West, by Michael E. Sheppard of the Monroe County Surveyor's Office.

CERTIFICATIONS:



Michael E. Sheppard

Date:9/17/2024
Michael E. Sheppard
State of Indiana
Professional Surveyor
No. 20100021



Trohn Enright-Randolph
Date:9/17/2024
Trohn Enright-Randolph
Monroe County Surveyor



Accepted by the Monroe
County Surveyor Review
Board on 9/17/2024

Donna Babich

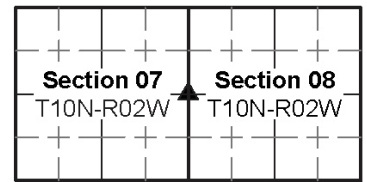


MONUMENT RECORD

Corner ID: **BeBI_E07**

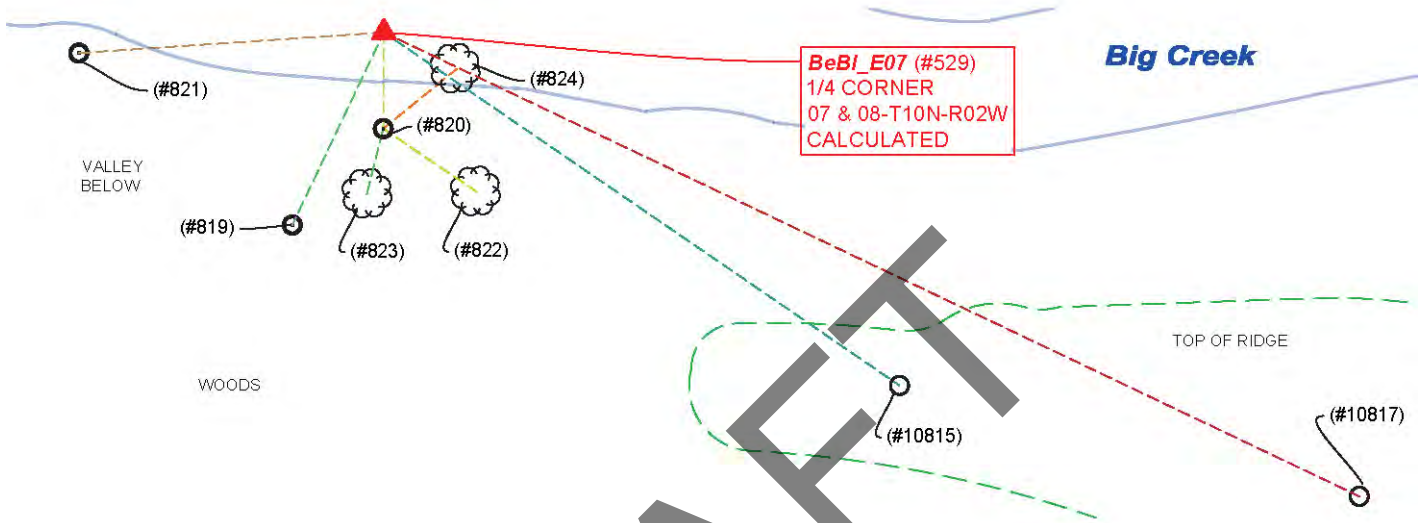
Quarter Corner

Sections 7 & 8- T10N-R02W, 2nd P.M.
Bean Blossom Township, Monroe County, Indiana



MONUMENT: Describe monument set or found (Include material type, scribing, distance above/below grade, dimensions.)
 (#529) calculated location of Quarter Section corner falls in a creek. An offset corner monument (#820-5/8" rebar (24" long) with 2" diameter aluminum cap inscribed MONROE COUNTY SURVEYORS OFFICE SHEPPARD PLS #20100021), was set flush with ground, on the Section line, 25.0' South of the calculated Quarter Section corner.

MONUMENT LOCATION SKETCH:



WITNESS MONUMENT TIES: Describe at least three new BT's (Bearing Trees) and/or witness objects established or work done to preserve existing evidence. BT diameters are noted as dbh (diameter at breast height) and are measured approximately 4.5' above ground. Bearings and Distances are measured from the monument to the center of the BT. Bearings and Distances to witness ties were measured with a Sokkia Set 510 Total Station. Note witness monuments listed in the below table are to the offset corner monument.

ID	Bearing	Distance	Description
#824	N50° 54'E	24.5	6" diameter sugar maple tree
#822	S56° 01'E	29.3'	15" diameter Shagbark Hickory tree
#823	S14° 12'W	17.7'	16" diameter Shagbark Hickory tree

CORNER ACCESSORIES

Other survey grade monuments that were located in the vicinity and their relation to the corner. Note Corner accessories listed in the table below are to the calculated Quarter Section corner location, in a creek.

#820	S00°21'04"W	25.0'	N:1482543.9427' E:3070244.8177' MCSO Capped rebar set flush
#819	S25° 27' 35"E	55.40'	N:1482518.9206' E:3070221.1550' Rebar Lite
#821	S86° 08' 17"W	79.51'	N:1482563.5874' E:3070165.6443' Rebar Lite
#10815	S55° 38' 06"E	162.45'	N:1482477.2438' E:3070379.0679' Mag hub nail set flush on top of hill
#10817	S64° 35' 33"E	280.81'	N:1482448.4592' E:3070498.6212' Mag hub nail set flush on top of hill



OFFICE OF THE MONROE COUNTY SURVEYOR • Trohn Enright-Randolph

501 N Morton Street Ste 205, Bloomington, IN 47404 • 812-349-2570 • surveyorsoffice@co.monroe.in.us

MONUMENT RECORD

Corner ID: **BeBI_E07**

Quarter Corner

Sections 7 & 8- T10N-R02W, 2nd P.M.
 Bean Blossom Township, Monroe County, Indiana

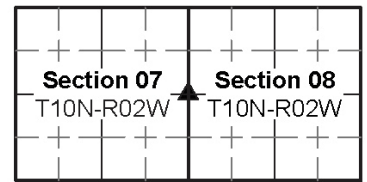


PHOTO IDENTIFIED: Photo Date: 07/26/2024



Photo Orientation & Description: From Southwest looking Northeast at offset corner monument.



Photo Orientation & Description: From Southeast looking Northwest at offset corner monument.

EXISTING SURVEY HISTORY Include as much detail and history of the corner as known at the time of perpetuation

ORIGINAL GOVERNMENT SURVEY:

Year Surveyed: 1815 By: William Harris Deputy Surveyor
 Where filed or recorded: Monroe County original notes page 265.
 Original monument: Post
 Bearing Trees or Reference Monuments:

Species	Dia.	Bearing	Distance
Sycamore	30"	N60°W	23 Links
Elm	6"	N33°E	30 Links

Notes: Per the dimensions on the original notes, the original post was set in a 10-link wide brook.

SUBSEQUENT CORNER RESTORATION:

None Found



OFFICE OF THE MONROE COUNTY SURVEYOR • Trohn Enright-Randolph

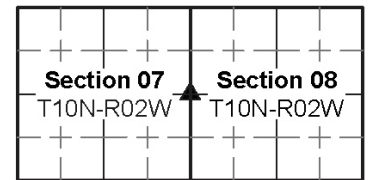
501 N Morton Street Ste 205, Bloomington, IN 47404 • 812-349-2570 • surveyorsoffice@co.monroe.in.us

MONUMENT RECORD

Corner ID: **BeBl_E07**

Quarter Corner

Sections 7 & 8- T10N-R02W, 2nd P.M.
Bean Blossom Township, Monroe County, Indiana



OTHER SURVEY HISTORY: *Include details such as surveyor name, date, recording info, monument description, etc.*

DocumentDate	SurveyID	Surveyor	Description	InstrumentNo
9/26/2013	RSID005420	Guerrettaz, Bernard	Wilhite II South Type "E" Administrative Subdivision Plat	2013018041.IN

ORIGINAL OR SUBSEQUENT SURVEY EVIDENCE FOUND: *Include, search area or areas, search procedure, etc.*

Date of Field work/Search: 07/26/2024 By: MES/WEP Monument Found: None, offset rebar set BTs or Reference Objects Found: No, but references established. Project #: 24-001 Field Book: 56, pages 77 & 78.

OTHER EVIDENCE: *Describe corner location relative to nearby features and how to reach the corner location – note fences, roads, timber cutting lines, mow lines, clearings, plantings, streams, topo changes, etc.*

Corner is in an approximate 35' wide creek bed. We reached the location by walking through the woods from the end of a drive that begins at 9216 West Wolf Mountain Road.

MONUMENT PRESERVATION: *Describe work done to preserve existing monument.*

Since the calculated Quarter Section corner is in a creek, we set an offset corner monument on the Section line, 25.0' South of the calculated Quarter Section corner. Also 2 rebar Lites and 2 mag hub nails were set nearby and their relativity to the calculated corner was documented.

THEORY OF LOCATION: *Describe the theory of location for acceptance of this monument. Include monument origin and associated uncertainty.*

The corner was calculated at the intersection of lines formed from the rebar set (from original witnesses) at the center of the Section 8 (#1000, BeBl_G07) through the stone found (#749, BeBl_F07) ±midway between said center of Section and the West Quarter of said Section with the extension of a line beginning at a rebar set in place of a found and removed nail at an old fence corner at the Northwest corner of said Section 8 (#58, BeBl_E05), through an engraved stone found (#10791, BeBl_E06) between said BeBl_E05 and the West Quarter corner of said Section 8. The stone at said BeBl_F07 is cited in Legal Survey Book 2, Page 399 as having been set "Half dist bet W ½ M & center". Which is why the extension of BeBl_G07 through this stone was held to reestablish BeBl_E07. The stone at said BeBl_E06 is cited in a description of land described in instrument #2018015505 in the Monroe County Recorder's Office as "stone marked "J.B.x" at the southeast corner of the northeast quarter of the northeast quarter on the east line of said east half of Section 7". Which is why the extension of BeBl_E05 through this stone was held to reestablish BeBl_E07. The stone at BeBl_E06 is also cited as the NW corner SW ¼ NW ¼ Sec 5 (Should read Sec 8), on a survey by Bernard A. Guerrettaz II recorded in instrument #2018015505 in the Monroe County Recorder's Office, RSID005420 in the Monroe County Surveyors Office. In said survey, Mr. Guerrettaz calculated the corner at BeBl_E07 ±N16 degrees 28 minutes West 18.0' from where it was calculated this survey, based on the distances shown on the survey plat of 1307.55' from #749 (BeBl_I06) and 1311.47' from #10773 (BeBl_F07)). Mr. Guerrettaz's survey contains no report, thus, I cannot decipher why he calculated the corner ±18' from where I did. The corner, calculated in the manner it was calculated in this survey, bears, in my opinion an uncertainty of 10' of being where it was originally established in the original survey.

GEODETIC COORDINATES: *Northing:1482526.8' Easting:3070240.5'*

BASIS OF GEODETIC COORDINATES:

The basis of bearings is Grid North NAD83(2011), Indiana West Zone, Epoch 2010.0000, Geoid Model G2012BU7, Datum NAD83_NO_TRANS, US Survey Feet, derived from GPS observations utilizing the Indiana Real-Time Network (INCORS). Coordinate data was collected with a Javad Triumph LS Network Rover and/or with a Sokkia Set 510 Total Station radially from points located with GPS. Distances obtained with GPS have not been adjusted to ground. To adjust grid distances to ground distances multiply them by a scale factor of 1.000041208.

This document is not complete without the associated Corner Perpetuation plat and report of survey for Section 7 or 8 Township 10 North Range 2 West by Michael E. Sheppard of the Monroe County Surveyor's Office.



OFFICE OF THE MONROE COUNTY SURVEYOR • Trohn Enright-Randolph

501 N Morton Street Ste 205, Bloomington, IN 47404 • 812-349-2570 • surveyorsoffice@co.monroe.in.us

MONUMENT RECORD

Corner ID: **BeBI_E07**

Quarter Corner

Sections 7 & 8- T10N-R02W, 2nd P.M.
Bean Blossom Township, Monroe County, Indiana

Section 07
T10N-R02W

Section 08
T10N-R02W

CERTIFICATIONS:



Michael E. Sheppard

Date: 9/17/2024
Michael E. Sheppard
State of Indiana
Professional Surveyor
No. 20100021



Trohn Enright-Randolph

Date: 9/17/2024
Trohn Enright-Randolph
Monroe County Surveyor



Accepted by the Monroe
County Surveyor Review
Board on 9/17/2024

DRAFT



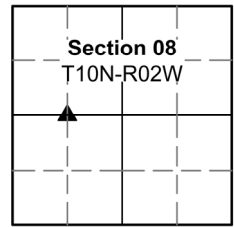
MONUMENT RECORD

Corner ID: **BeBI_F07**

Sixteenth Corner

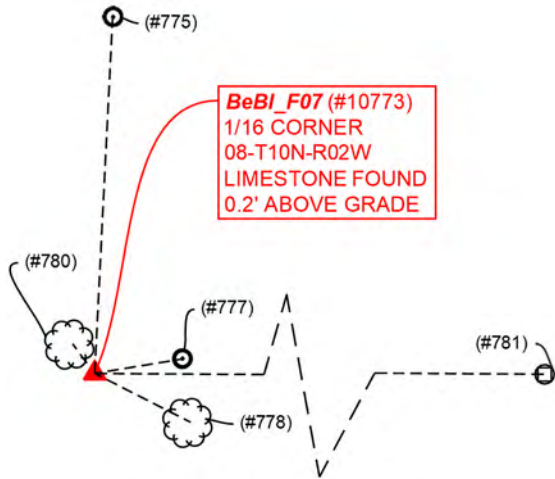
Section 8-T10N-R02W, 2nd P.M.

Bean Blossom Township, Monroe County, Indiana



MONUMENT: Describe monument set or found (Include material type, scribing, distance above/below grade, dimensions.)
 (#10773) 0.7' north-south by 0.7' east-west Limestone found 0.2' above ground at the Southwest base of a leaning wood post at the beginning of a north bound fence line and at the extension of old east and west fence remnants. We observed a faint cross on top of the stone and with a mag nail made a dimple in the center of the cross.

MONUMENT LOCATION SKETCH:



WITNESS MONUMENT TIES: Describe at least three new BT's (Bearing Trees) and/or witness objects established or work done to preserve existing evidence. BT diameters are noted as dbh (diameter at breast height) and are measured approximately 4.5' above ground. Bearings and Distances are measured from the monument to the center of the BT. Bearings and Distances to witness ties were measured with a Sokkia Set 510 Total Station.

ID	Bearing	Distance	Description
(#780)	N36° 44'W	7.7'	8" diameter Beech Tree
(#778)	S63° 00'E	22.4'	14" diameter Beech Tree
(#781)	S89° 43'E	784.0'	East Base Concrete post at beginning West Fence

MONUMENT ACCESSORIES

Other survey grade monuments that were located in the vicinity and their relation to the monument. Witnesses noted as a Rebar Lite are a 5/8" diameter by 16" polycarbonate rod with a 1-1/2" mag nail in top and yellow plastic cap stamped "MONROE COUNTY WITNESS POINT" set 0.1 foot below grade unless otherwise noted.

Geodetic coordinates in this table are provided in the format Northing, Easting

(#777)	N80° 34' 18"E	18.57'	N:1482564.3802' E:3071569.4240' Rebar Lite
(#775)	N02° 53' 11"E	74.47'	N:1482635.7187' E:3071554.8600' Rebar Lite



OFFICE OF THE MONROE COUNTY SURVEYOR • Trohn Enright-Randolph

501 N Morton Street Ste 205, Bloomington, IN 47404 • 812-349-2570 • surveyorsoffice@co.monroe.in.us

MONUMENT RECORD

Corner ID: **BeBI_F07**

Sixteenth Corner

Section 8-T10N-R02W, 2nd P.M.

Bean Blossom Township, Monroe County, Indiana

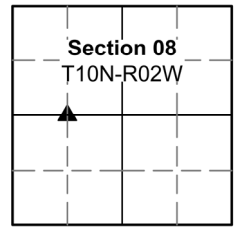


PHOTO IDENTIFIED: Photo Date: 06/28/2024



Photo Orientation & Description: From above.



Photo Orientation & Description: From West looking East

EXISTING SURVEY HISTORY Include as much detail and history of the corner as known at the time of perpetuation

ORIGINAL GOVERNMENT SURVEY:

This sixteenth corner was not set in the Original Government Survey of Section 8 Township 10 North Range 2 West.

Original Establishment of Corner:

Year Surveyed: 1884 By: M.H. Buskirk Monroe County Surveyor.

Where filed or recorded: Legal Survey Book 2, Page 399.

Original monument: Not cited

Bearing Trees or Reference Monuments:

Species	Dia.	Bearing	Distance
Beech	15"	N37°E	31 Links
Beech		N73°W	36 ½ Links

Notes: Notes being set half distance between West Quarter corner and center of Section.

SUBSEQUENT CORNER RESTORATION:

None Found

OTHER SURVEY HISTORY: Include details such as surveyor name, date, recording info, monument description, etc.

DocumentDate	SurveyID	Surveyor	Description	InstrumentNo
4/13/2009	RSID005476	David R. Meier	Administrative subdivision	
9/26/2013	RSID005420	Guerrettaz, Bernard	"Wilhite II South Type ""E"" Administrative Subdivision Plat"	2013018041.IN



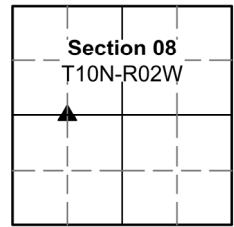
MONUMENT RECORD

Corner ID: **BeBI_F07**

Sixteenth Corner

Section 8-T10N-R02W, 2nd P.M.

Bean Blossom Township, Monroe County, Indiana



ORIGINAL OR SUBSEQUENT SURVEY EVIDENCE FOUND BY THE MONROE COUNTY SURVEYORS OFFICE: *Include, search area or areas, search procedure, etc.*

Date of Field work/Search: 6/28/2024 By: MES/WEP Monument Found: Stone BTs or Reference Objects Found: No, but new references made. Project #: 24-001 Field Book: 56, Pages 68 & 69 Notes:

OTHER EVIDENCE: *Describe corner location relative to nearby features and how to reach the corner location – note fences, roads, timber cutting lines, mow lines, clearings, plantings, streams, topo changes, etc.*

We reached the corner from Texas Ridge Road by walking down (West) an existing fence line that divides the parcels at 9111 and 9085 Texas Ridge road, approximately 800 feet to the corner (from Texas Ridge Road). The stone is ± at an ancient east-west and north fence intersection.

MONUMENT PRESERVATION: *Describe work done to preserve existing monument.*

The stone was GPS located. 2 Rebar Lites were set within sight of the stone that could be used to reestablish its location, should it become obliterated. Additionally, tree references were made to the stone to visually aid in finding it.

THEORY OF LOCATION: *Describe the theory of location for acceptance of this monument. Include monument origin and associated uncertainty.*

The Stone was found. I believe it to be the monument set by M. H. Buskirk, documented in Legal Survey Book 2, page 399. This and its location relative to existing occupation lines and other monumentation in the area makes it, in my opinion, the most reliable evidence of the originally established location of the sixteenth corner with negligible uncertainty.

GEODETIC COORDINATES: *Northing:1482561.3390', Easting:3071551.11'*

The basis of bearings is Grid North NAD83(2011), Indiana West Zone, Epoch 2010.0000, Geoid Model G2012BU7, Datum NAD83_NO_TRANS, US Survey Feet, derived from GPS observations utilizing the Indiana Real-Time Network (INCORS). Coordinate data was collected with a Javad Triumph LS Network Rover and/or with a Sokkia Set 510 Total Station radially from points located with GPS. Distances obtained with GPS have not been adjusted to ground. To adjust grid distances to ground distances multiply them by a scale factor of 1.000041156.

This document is not complete without the associated Corner Perpetuation plat and report of survey for Section 8 Township 10 North Range 2 West, by Michael E. Sheppard of the Monroe County Surveyor's Office.

CERTIFICATIONS:



Michael E. Sheppard

Date:9/17/2024
Michael E. Sheppard
State of Indiana
Professional Surveyor
No. 20100021



Trohn Enright-Randolph

Date:9/17/2024
Trohn Enright-Randolph
Monroe County Surveyor



Accepted by the Monroe
County Surveyor Review
Board on 9/17/2024

Donna Babick



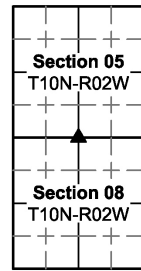
MONUMENT RECORD

Corner ID: **BeBI_G05**

Quarter Corner

Sections 5 & 8-10N-R02W, 2nd P.M.

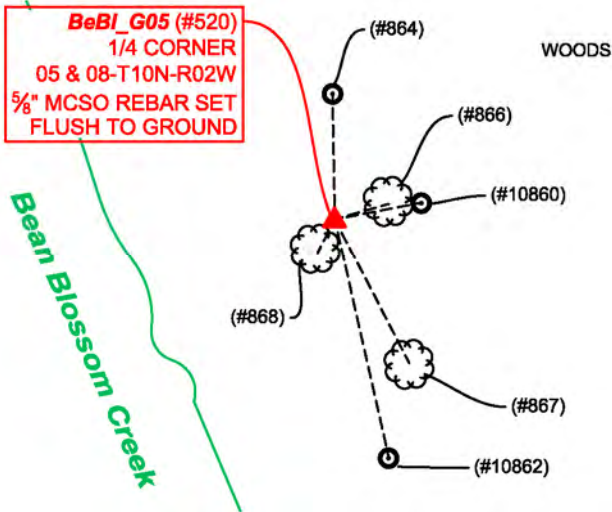
Bean Blossom Township, Monroe County, Indiana



MONUMENT: Describe monument set or found (Include material type, scribing, distance above/below grade, dimensions.)

(#520) 5/8" rebar (24" long) with 2" diameter aluminum cap inscribed MONROE COUNTY SURVEYORS OFFICE SHEPPARD PLS #20100021, set, with top flush with ground, 14' East of the East top of bank of Bean Blossom Creek.

MONUMENT LOCATION SKETCH:



WITNESS MONUMENT TIES: Describe at least three new BT's (Bearing Trees) and/or witness objects established or work done to preserve existing evidence. BT diameters are noted as dbh (diameter at breast height) and are measured approximately 4.5' above ground. Bearings and Distances are measured from the monument to the center of the BT. Bearings and Distances to witness ties were measured with a Sokkia Set 510 Total Station.

ID	Bearing	Distance	Description
(#866)	N76° 54'E	12.2'	6" diameter twin Pignut Hickory tree
(#867)	S27° 21'E	25.3'	4" diameter Hornbeam tree
(#868)	S22° 39'W	2.4'	2" diameter Hornbeam tree

MONUMENT ACCESSORIES

Other survey grade monuments that were located in the vicinity and their relation to the monument. Witnesses noted as a Rebar Lite are a 5/8" diameter by 16" polycarbonate rod with a 1-1/2" mag nail in top and yellow plastic cap stamped "MONROE COUNTY WITNESS POINT" set 0.1 foot below grade unless otherwise noted.

Geodetic coordinates in this table are provided in the format Northing, Easting

(#10860)	N79° 05' 21"E	13.70'	N: 1485205.3877 ' E: 3072898.1351' Sheppard PLS capped rebar found 0.4' AG
(#10862)	S12° 47' 02"E	38.27'	N: 1485165.4702' E: 3072893.1509' Rebar Lite
(#864)	N01° 04' 49"W	19.33'	N: 1485222.1257' E: 3072884.3175', Rebar Lite



OFFICE OF THE MONROE COUNTY SURVEYOR • Trohn Enright-Randolph

501 N Morton Street Ste 205, Bloomington, IN 47404 • 812-349-2570 • surveyorsoffice@co.monroe.in.us

MONUMENT RECORD

Corner ID: **BeBI_G05**

Quarter Corner

Sections 5 & 8-10N-R02W, 2nd P.M.
 Bean Blossom Township, Monroe County, Indiana

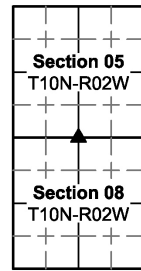


PHOTO IDENTIFIED: Photo Date: 08/07/2024



Photo Orientation & Description: From above



Photo Orientation & Description: From East Looking West.

EXISTING SURVEY HISTORY Include as much detail and history of the corner as known at the time of perpetuation

ORIGINAL GOVERNMENT SURVEY:

Year Surveyed: 1815 By: William Harris Deputy Surveyor

Where filed or recorded: Original notes, page 265.

Original monument: Post

Bearing Trees or Reference Monuments:

Species	Dia.	Bearing	Distance
Beech	7"	S14°W	8 Links
Ash	12"	N35°E	32 Links

Notes: Original post was 0.5 chains (33') East of top of bank of creek.

SUBSEQUENT CORNER RESTORATION:

None Found

DocumentDate	SurveyID	Surveyor	Description	InstrumentNo
2/28/2024	RSID005463	Sheppard, Michael E.	Sycamore - Mitchell Type "E" Administrative Subdivision Lots 1 and 2	2024004521.IN



OFFICE OF THE MONROE COUNTY SURVEYOR • Trohn Enright-Randolph

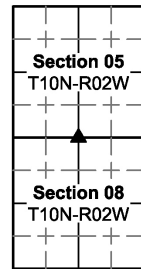
501 N Morton Street Ste 205, Bloomington, IN 47404 • 812-349-2570 • surveyorsoffice@co.monroe.in.us

MONUMENT RECORD

Corner ID: **BeBI_G05**

Quarter Corner

Sections 5 & 8-10N-R02W, 2nd P.M.
Bean Blossom Township, Monroe County, Indiana



ORIGINAL OR SUBSEQUENT SURVEY EVIDENCE FOUND BY THE MONROE COUNTY SURVEYORS OFFICE: *Include, search area or areas, search procedure, etc.*

Date of Field work/Search: 08/07/2024 *By:* MES/JMG *Monument Found:* Rebar set *BTs or Reference Objects Found:* No, but references established. *Project #:* 24-001 *Field Book:* 57, pages 1 & 2. *Notes:*

OTHER EVIDENCE: *Describe corner location relative to nearby features and how to reach the corner location – note fences, roads, timber cutting lines, mow lines, clearings, plantings, streams, topo changes, etc.*

We entered the site through a farm field entrance off of Moon road, drove around the edge of a crop field (with landowner permission) to near the site, then walked through approximately 150' of (planted) trees to the East top of bank of Bean Blossom creek. The set rebar is 14' East of said top of bank. There are no visible occupation lines in the vicinity.

MONUMENT PRESERVATION: *Describe work done to preserve existing monument.*

The rebar was set. 2 rebar Lites were set, and a capped rebar was located, within sight of the set Rebar that could be used to reestablish its location should it become obliterated. 3 trees were located for visual references. A steel post with survey marker witness sign attached 4' above ground, facing Southeast was set 0.25' West of the Rebar.

THEORY OF LOCATION: *Describe the theory of location for acceptance of this monument. Include monument origin and associated uncertainty.*

The rebar was set on the extension of a line from a rebar set in place of a found and removed nail at an old fence corner at the Northwest corner of Section 8/Southwest corner of Section 5 (#58 BeBI_E05) through a rebar with metal cap (#10316) found on the East side of Texas Ridge Road, 1771.54' East of said BeBI_E05, and at an equidistant split (as near as possible) between said BeBI_E05 and a Harrison monument set in a crop field at the Northeast corner of Section 8/Southeast corner of Section 5, (#521 BeBI_I05). I had established and set this corner in a similar method in a prior survey dated June 28, 2019, later revised into a minor subdivision and recorded in instrument #2024004521 (RSID005463), however I was proportioning from said BeBI_E05 to a row of posts near BeBI_K05. In reviewing my prior work, it also appears I had a poor-quality GPS shot on the rebar at #10316. The resultant is I set my rebar N79° 05' 21"E 13.7' from where I established the Quarter corner this survey, after having a much larger picture of surrounding Section corner locations than my prior traverse revealed. It is noteworthy that though the exact history or method of establishment of the rebar at #10316 is not known, it is in considerable agreement with the alignment of an occupation line fence that begins on the West side of Texas Ridge road and runs all the way to said BeBI_E05 and the rebar was found to have been used by multiple surveyors as a point on the Quarter Section line.

GEODETIC COORDINATES: *Northing:*1485202.8' *Easting:*3072884.7'

BASIS OF GEODETIC COORDINATES:

The basis of bearings is Grid North NAD83(2011), Indiana West Zone, Epoch 2010.0000, Geoid Model G2012BU7, Datum NAD83_NO_TRANS, US Survey Feet, derived from GPS observations utilizing the Indiana Real-Time Network (INCORS). Coordinate data was collected with a Javad Triumph LS Network Rover and/or with a Sokkia Set 510 Total Station radially from points located with GPS. Distances obtained with GPS have not been adjusted to ground. To adjust grid distances to ground distances multiply them by a scale factor of 1.000041208.

This document is not complete without the associated Corner Perpetuation plat and report of survey for Section 5 or Section 8 Township 10 North Range 2 West, by Michael E. Sheppard of the Monroe County Surveyor's Office.



OFFICE OF THE MONROE COUNTY SURVEYOR • Trohn Enright-Randolph

501 N Morton Street Ste 205, Bloomington, IN 47404 • 812-349-2570 • surveyorsoffice@co.monroe.in.us

Page 3 of 4

MONUMENT RECORD

Corner ID: **BeBI_G05**

Quarter Corner

Sections 5 & 8-10N-R02W, 2nd P.M.
Bean Blossom Township, Monroe County, Indiana

	Section 05	
	T10N-R02W	
	Section 08	
	T10N-R02W	

CERTIFICATIONS:



Michael E. Sheppard

Date: 9/17/2024
Michael E. Sheppard
State of Indiana
Professional Surveyor
No. 20100021



Trohn Enright-Randolph

Date: 9/17/2024
Trohn Enright-Randolph
Monroe County Surveyor



Accepted by the Monroe
County Surveyor Review
Board on 9/17/2024

Jennabaird

DRAFT



MONUMENT RECORD

Corner ID: **BeBI_G07**

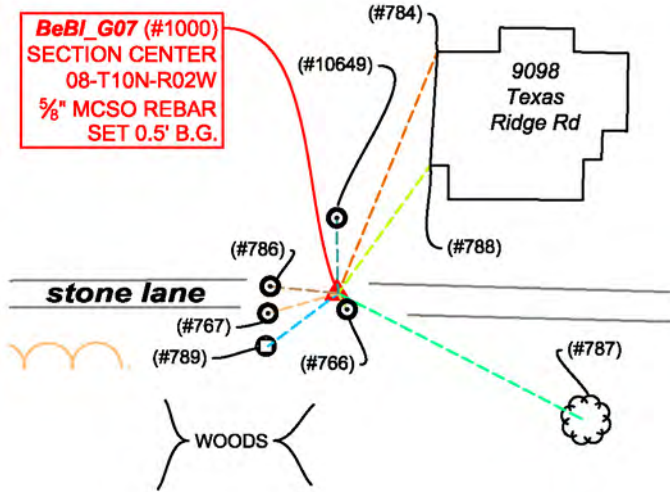
Quarter Corner

Section 8- T10N-R02W, 2nd P.M.
 Bean Blossom Township, Monroe County, Indiana



MONUMENT: Describe monument set or found (Include material type, scribing, distance above/below grade, dimensions.)
 5/8" rebar (24" long) with 2" diameter aluminum cap inscribed MONROE COUNTY SURVEYORS OFFICE SHEPPARD PLS #20100021, set, 0.5' below the surface of and in the approximate center of an east-west stone drive.

MONUMENT LOCATION SKETCH:



WITNESS MONUMENT TIES: Describe at least three new BT's (Bearing Trees) and/or witness objects established or work done to preserve existing evidence. BT diameters are noted as dbh (diameter at breast height) and are measured approximately 4.5' above ground. Bearings and Distances are measured from the monument to the center of the BT. Bearings and Distances to witness ties were measured with a Sokkia Set 510 Total Station.

ID	Bearing	Distance	Description
(#784)	N22° 22'E	67.8'	Northwest corner of foundation of old house
(#788)	N35° 50'E	40.9'	Southwest corner of foundation of old house
(#787)	S62° 47'E	71.3'	17" stump, believed to be original mulberry witness
(#789)	S53° 02'W	22.8'	Steel Post with witness sign
(#771)	N47° 31'W	357.1'	Base of leaning 0.6' by 0.3' by 0.6' AG, cut limestone

MONUMENT ACCESSORIES

Other survey grade monuments that were located in the vicinity and their relation to the monument. Witnesses noted as a Rebar Lite are a 5/8" diameter by 16" polycarbonate rod with a 1-1/2" mag nail in top and yellow plastic cap stamped "MONROE COUNTY WITNESS POINT" set 0.1 foot below grade unless otherwise noted.

Geodetic coordinates in this table are provided in the format Northing, Easting

ID	Bearing	Distance	Description
(#766)	S28° 55' 56"E	4.82'	N:1482549.4146' E: 3072877.4908' Meier PLS Capped rebar found flush
(#767)	S74° 02' 26"W	19.00'	N:1482548.4078' E:3072856.8951' 1" Iron Bolt Found 0.5' BG
(#786)	N84° 14' 05"W	17.80'	N:1482555.4190' E:3072857.4532' 1/2" rebar found 0.4' BG
(#10649)	N01° 05' 20"W	19.54'	N:1482573.1677' E:3072874.7887' Rebar Lite
(#10647)	S84° 53' 42"W	122.65'	N:1482542.7182' E:3072753.0007' Rebar Lite



OFFICE OF THE MONROE COUNTY SURVEYOR • Trohn Enright-Randolph

501 N Morton Street Ste 205, Bloomington, IN 47404 • 812-349-2570 • surveyorsoffice@co.monroe.in.us

MONUMENT RECORD

Corner ID: **BeBI_G07**

Quarter Corner

Section 8- T10N-R02W, 2nd P.M.
 Bean Blossom Township, Monroe County, Indiana



PHOTO IDENTIFIED: Photo Date: 07/12/2024



Photo Orientation & Description: From East Looking West



Photo Orientation & Description: From Southwest Looking Northeast

EXISTING SURVEY HISTORY Include as much detail and history of the corner as known at the time of perpetuation

ORIGINAL GOVERNMENT SURVEY:

This corner was not set in the original Government survey.

ORIGINAL CORNER ESTABLISHMENT:

Date Surveyed: February 1884 By: H. B. Biskin, Monroe County Surveyor

Where filed or recorded: Legal Survey Book 2, Page 397.

Original monument: Not Noted.

Bearing Trees or Reference Monuments:

Species	Dia.	Bearing	Distance
Mulberry	N/A	S26°E	33 Links
Black Walnut	48"	S45°W	62 Links

Notes:

SUBSEQUENT CORNER RESTORATION:

Date Surveyed: April 26, 1915 By: Charles M Bowers Deputy Surveyor.

Where filed or recorded: Legal Survey Book 3, Page 52

Original monument: Not Noted

Bearing Trees or Reference Monuments:

Species	Dia.	Bearing	Distance
NW corner foundation	N/A	N36°E	62 Links
Mulberry	6"	S64°E	108 Links

Notes: Mr. Bowers made no mention of the 1884 Survey. I believe the tie to "NW" corner of house foundation was actually the house foundations SW corner (closest corner to the monument).

SUBSEQUENT CORNER RESTORATION:

None Found after 1915.

OTHER SURVEY HISTORY: Include details such as surveyor name, date, recording info, monument description, etc.

DocumentDate	SurveyID	Surveyor	Description	InstrumentNo
4/13/2009	RSID005476	David R. Meier	Administrative subdivision	



OFFICE OF THE MONROE COUNTY SURVEYOR • Trohn Enright-Randolph

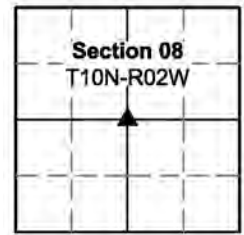
501 N Morton Street Ste 205, Bloomington, IN 47404 • 812-349-2570 • surveyorsoffice@co.monroe.in.us

MONUMENT RECORD

Corner ID: **BeBI_G07**

Quarter Corner

Section 8- T10N-R02W, 2nd P.M.
Bean Blossom Township, Monroe County, Indiana



ORIGINAL OR SUBSEQUENT SURVEY EVIDENCE FOUND BY THE MONROE COUNTY SURVEYORS OFFICE: *Include, search area or areas, search procedure, etc.*

Date of Field work/Search: 05/29/2024, 06/27/2024 & 07/12/2024 *By:* MES, JMG, WEP *Monument Found:* Rebar set *BTs or Reference Objects Found:* Yes *Project #:* 24-001 *Field Book:* 56, pages 47,66,67 &71 *Notes:*

OTHER EVIDENCE: *Describe corner location relative to nearby features and how to reach the corner location – note fences, roads, timber cutting lines, mow lines, clearings, plantings, streams, topo changes, etc.*

Rebar set is in the approximate center of an east-west stone lane, by a house at 9098 North Texas Ridge Road, Gosport In. I observed sparse fence remnants to the South that appear to align with this general vicinity. Old fencing that begins 241' North of the corner also aligns with this general vicinity.

MONUMENT PRESERVATION: *Describe work done to preserve existing monument.*

The rebar was set, GPS coordinates were taken on it and numerous references were documented around it.

THEORY OF LOCATION: *Describe the theory of location for acceptance of this monument. Include monument origin and associated uncertainty.*

The Rebar was set. Its location was based on the Southwest corner of the foundation of an old house, which foundation sticks out past the actual house corner, and a stump, believed to be from a 1915 reference tree. A corner (actual monument not cited) is noted as being established on April 26, 1915, via Legal Survey Book 3, page 52. The corner cites 2 references, first: "NW cor foundation" N36E 62 links ($\pm 40.92'$). Second 6" Mulberry S64E 108 Links ($\pm 71.28'$). I believe the citation of "NW cor foundation" was recorded in error and should have read SW cor foundation, as the Southwest corner of the house foundation would have been the closest foundation corner to the established Center of Section corner. It appears the house in place today is on the same foundation that existed in 1915. The foundation has been added on to, but where the old foundation corner meets a new porch foundation is visibly distinctive. We then found a 17" diameter stump that closely matched where the 6" mulberry was cited in 1915, based on calculating the corner from the record bearing and distance from the Southwest corner of the old foundation. I believe this stump is from the original mulberry reference tree. I researched Mulberry trees some and read numerous articles stating that though Mulberry trees are not typically noted for long life spans, Mulberry wood is very tough, durable and rot resistant, known through history as being used for fence posts and caskets even cited in the Bible, in Isaiah 40:20, as wood that will not rot. This made me even more confident of this stump being from the 1915 Mulberry. I set the rebar at record distance of 40.92' from the Southwest house foundation corner and 71.28' from the center of the stump. This location, in my opinion, fit well with surrounding monumentation and occupation lines reliant on the center of Section within an uncertainty of $\pm 2'$. We dug a 3 1/2' north-south by 3' east-west hole in the drive to a depth of 1' (to the clay base) of the stone drive, in search of a stone, but found none.

GEODETIC COORDINATES: *Northing:* 1482553.6', *Easting:* 3072875.2'

BASIS OF GEODETIC COORDINATES:

The basis of bearings is Grid North NAD83(2011), Indiana West Zone, Epoch 2010.0000, Geoid Model G2012BU7, Datum NAD83_NO_TRANS, US Survey Feet, derived from GPS observations utilizing the Indiana Real-Time Network (INCORS). Coordinate data was collected with a Javad Triumph LS Network Rover and/or with a Sokkia Set 510 Total Station radially from points located with GPS. Distances obtained with GPS have not been adjusted to ground. To adjust grid distances to ground distances multiply them by a scale factor of 1.000041156.

This document is not complete without the associated Corner Perpetuation plat and report of survey for Section 8, Township 10 North Range 2 West by Michael E. Sheppard of the Monroe County Surveyor's Office.



OFFICE OF THE MONROE COUNTY SURVEYOR • Trohn Enright-Randolph

501 N Morton Street Ste 205, Bloomington, IN 47404 • 812-349-2570 • surveyorsoffice@co.monroe.in.us

Page 3 of 4

MONUMENT RECORD

Corner ID: **BeBI_G07**

Quarter Corner

Section 8- T10N-R02W, 2nd P.M.
Bean Blossom Township, Monroe County, Indiana



CERTIFICATIONS:



Michael E. Sheppard

Date: 9/17/2024
Michael E. Sheppard
State of Indiana
Professional Surveyor
No. 20100021



Trohn Enright-Randolph

Date: 9/17/2024
Trohn Enright-Randolph
Monroe County Surveyor



Accepted by the Monroe
County Surveyor Review
Board on 9/17/2024

Donna Babich



MONUMENT RECORD
State of Indiana - County of Monroe

Section: 8

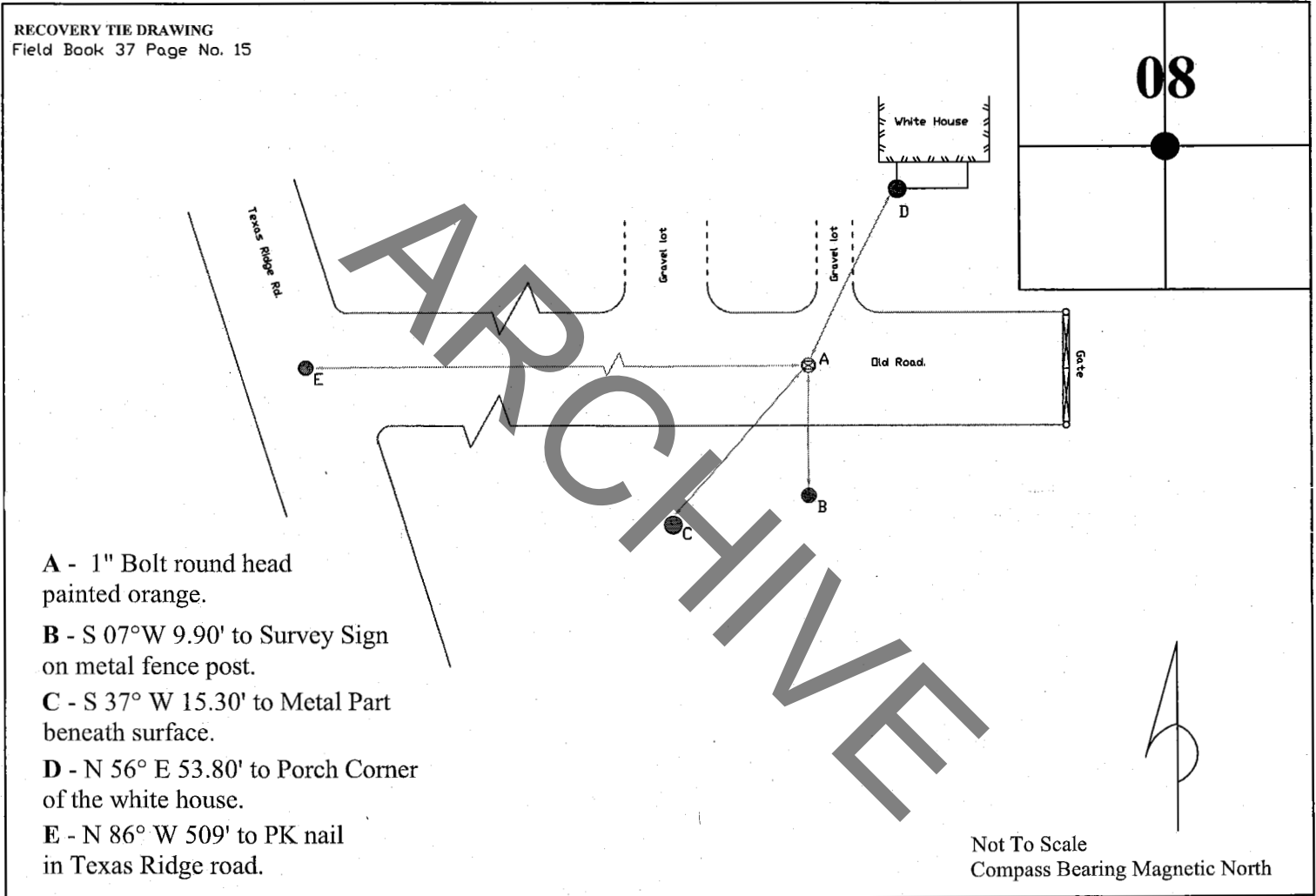
Township: 10 North

Range: 2 West

Corner ID: BeB1 G-07

Monument Description & Remarks: 1" Bolt, round head painted orange, 4" beneath old gravel road.

References On File: Phil Tapp survey, Robert & Althen Parsons deed records (183) page 6 & (229) page 491, on file in recorder's office.



I, Kevin P. Enright, Monroe County Surveyor, hereby certify that this document was prepared under my direction in accordance with the provisions of Section 36-2-12-11 of the Indiana Code; and the above data is given under my hand and seal this 3rd day of July, 2005.

Kevin P. Enright



Administered by the Monroe County Surveyor Review Board

Date: August 9, 2005

MONUMENT RECORD

Corner ID: **BeBI_G08**

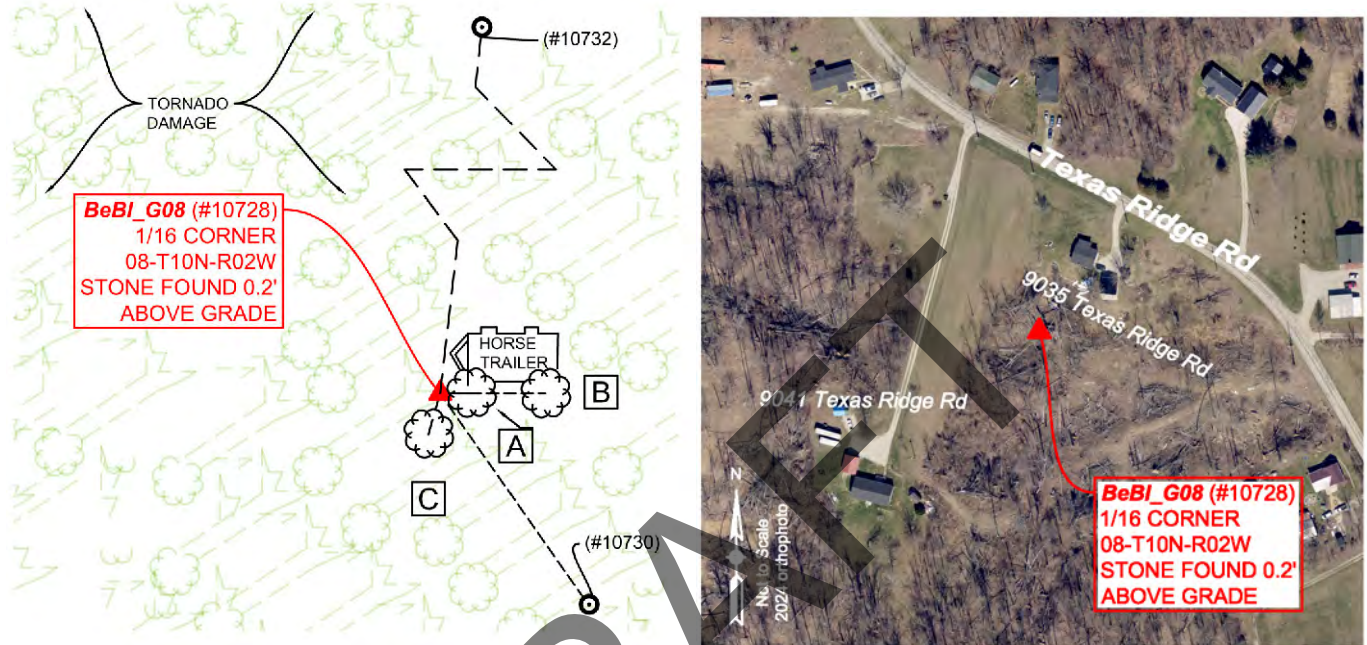
Sixteenth Corner

Section 8-T10N-R02W, 2nd P.M.

Bean Blossom Township, Monroe County, Indiana

MONUMENT: Describe monument set or found (Include material type, scribing, distance above/below grade, dimensions.)
 (#10728) 0.4' north-south by 0.5' east-west cut limestone found with top 0.2' above ground and a cross across its top, at the west base of a 24" diameter (at base) twin pignut hickory tree at the corner of old North and East fences.

MONUMENT LOCATION SKETCH:



WITNESS MONUMENT TIES

All ties to new Bearing Trees (BTs) are measured from the monument to the center of the tree. BT diameters are noted as dbh and are measured approximately 4.5' above ground.

ID	BEARING	DISTANCE	DESCRIPTION
Witness A	N 90d E	1.1'	24" Pignut Hickory Tree
Witness B	N 90d E	16.3'	30" Pignut Hickory Tree
Witness C	S 15d W	2.0'	3" Sugar Maple Tree

MONUMENT ACCESSORIES

Other survey grade monuments that were located in the vicinity and their relation to the monument. Witnesses noted as a rebarlite are a 5/8" diameter by 16" polycarbonate rod with a 1-1/2" mag nail and yellow plastic cap stamped "MONROE COUNTY WITNESS POINT" set 0.1 foot below grade unless otherwise noted. Geodetic coordinates in this table are provided in the format Northing, Easting.

(#10732)	N 6d34'22" E	96.08'	N:1481341.53' E:3072884.19" Rebar Lite
(#10730)	S 35d1'1" E	38.59'	N:1481214.47' E:3072895.34" Rebar Lite



OFFICE OF THE MONROE COUNTY SURVEYOR • Trohn Enright-Randolph

501 N Morton Street Ste 205, Bloomington, IN 47404 • 812-349-2570 • surveyorsoffice@co.monroe.in.us

MONUMENT RECORD

Corner ID: **BeBI_G08**

Sixteenth Corner

Section 8-T10N-R02W, 2nd P.M.

Bean Blossom Township, Monroe County, Indiana

PHOTO IDENTIFIED: Photo Date: 06/11,2024



Photo Orientation & Description: From Above



Photo Orientation & Description: From West looking East

EXISTING SURVEY HISTORY Include as much detail and history of the corner as known at the time of perpetuation

ORIGINAL GOVERNMENT SURVEY:

This corner was not set in the original Government survey.

ORIGINAL CORNER ESTABLISHMENT:

Date Surveyed: April 26, 1915 By: Charles M Bowers Deputy Surveyor.

Where filed or recorded: Legal Survey Book 3, Page 52

Original monument: Not Noted

Bearing Trees or Reference Monuments:

Species	Dia.	Bearing	Distance
Hickory	6"	S63 1/2°W	29 Links
Ash	6"	S10°W	50 1/2 Links

SUBSEQUENT CORNER RESTORATION:
None Found.

OTHER SURVEY HISTORY: Include details such as surveyor name, date, recording info, monument description, etc.

DocumentDate	SurveyID	Surveyor	Description	InstrumentNo
4/13/2009	RSID005476	David R. Meier	Administrative subdivision	

ORIGINAL OR SUBSEQUENT SURVEY EVIDENCE FOUND BY THE MONROE COUNTY SURVEYORS OFFICE: Include, search area or areas, search procedure, etc.

Date of Field work/Search: 06/11/2024 By: MES/JMG Monument Found: Stone BTs or Reference Objects Found: Not found, but references established Project #: 24-001 Field Book: 56 Notes: 61 & 62.

OTHER EVIDENCE: Describe corner location relative to nearby features and how to reach the corner location – note fences, roads, timber cutting lines, mow lines, clearings, plantings, streams, topo changes, etc.

The Stone is at an old North and East fence corner, in a wooded area devastated by a tornado, between houses at 9035 and 9041 North Texas Ridge Road Gosport In.



OFFICE OF THE MONROE COUNTY SURVEYOR • Trohn Enright-Randolph

501 N Morton Street Ste 205, Bloomington, IN 47404 • 812-349-2570 • surveyorsoffice@co.monroe.in.us

MONUMENT RECORD

Corner ID: **BeBI_G08**

Sixteenth Corner

Section 8-T10N-R02W, 2nd P.M.

Bean Blossom Township, Monroe County, Indiana

MONUMENT PRESERVATION: *Describe work done to preserve existing monument.*

We established GPS coordinates on the stone, set 2 rebar Lites within sight of the stone, that could be used to establish its location should it become obliterated and tied it to 3 nearby trees for visual reference.

THEORY OF LOCATION: *Describe the theory of location for acceptance of this monument. Include monument origin and associated uncertainty.*

Stone was found. Though no monument type was noted by Charles M Bowers Deputy Surveyor in Legal Survey Book 3, Page 52, it appears this is the monument he set, and this survey appears to be the survey that originally established the aliquot Section division corner at BeBI_G08, thus making it the most reliable evidence of the originally established location of said corner with negligible uncertainty.

GEODETIC COORDINATES: *Northing: 1481246.1', Easting: 3072873.2'*

BASIS OF GEODETIC COORDINATES:

The basis of bearings is Grid North NAD83(2011), Indiana West Zone, Epoch 2010.0000, Geoid Model G2012BU7, Datum NAD83_NO_TRANS, US Survey Feet, derived from GPS observations utilizing the Indiana Real-Time Network (INCORS). Coordinate data was collected with a Javad Triumph LS Network Rover and/or with a Sokkia Set 510 Total Station radially from points located with GPS. Distances obtained with GPS have not been adjusted to ground. To adjust grid distances to ground distances multiply them by a scale factor of 1.000041156.

This document is not complete without the associated Corner Perpetuation plat and report of survey for Section xxxxxx by Michael E. Sheppard of the Monroe County Surveyor's Office.

CERTIFICATIONS:



Michael E. Sheppard

Date: 9/17/2024
Michael E. Sheppard
State of Indiana
Professional Surveyor
No. 20100021



Trohn Enright-Randolph

Date: 9/17/2024
Trohn Enright-Randolph
Monroe County Surveyor



Accepted by the Monroe
County Surveyor Review
Board on 9/17/2024

Donna Babich

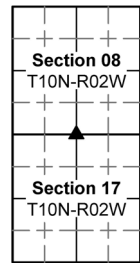


MONUMENT RECORD

Corner ID: **BeBI_G09**

Quarter Corner

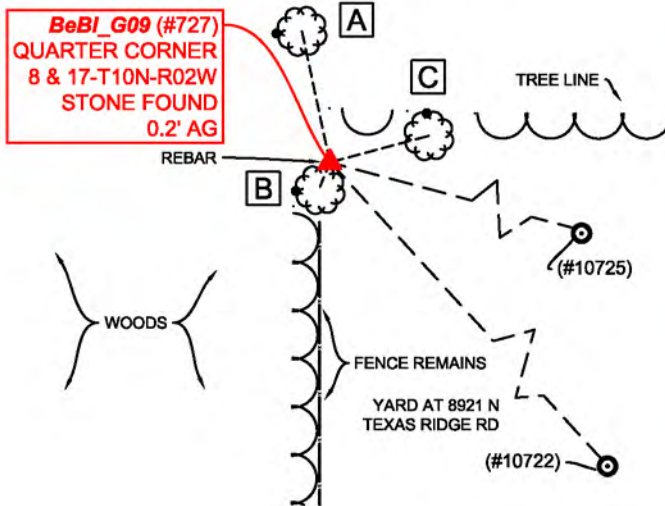
Sections 8 and 17- T10N-R02W, 2nd P.M.
 Bean Blossom Township, Monroe County, Indiana



MONUMENT: Describe monument set or found (Include material type, scribing, distance above/below grade, dimensions.)
 (Point #727) 0.4' north-south by 0.3' east-west peak of limestone found 0.2' above ground, with a bent 5/8" rebar, 0.8' above ground, 0.8' west.

The stone is at the beginning of an ancient southbound fence remnant line. There is a steel post with Monroe County Witness sign attached, 2.5' above ground 1.5' west of the stone.

MONUMENT LOCATION SKETCH:



WITNESS MONUMENT TIES			
All ties to new Bearing Trees (BTs) are a mag nail set in a 1-1/2" plastic washer stamped "SURVEY MARKER - DO NOT REMOVE" and hack mark at the root crown (less than 12" above ground) perpendicular to the center of the tree, unless otherwise noted. BT diameters are noted as dbh and are measured approximately 4.5' above ground. Bearings are measured from the monument to the center of the BT, distances are measured from the monument to the mag nail.			
ID	BEARING	DISTANCE	DESCRIPTION
Witness A	N 12d W	41.8'	Mag nail and washer set in hack 0.6' above grade on the west side of a 25" white oak with an old metal "No Hunting" sign grown into the east side of the tree.
Witness B	S 22d W	8.2'	Mag nail and washer set in hack 0.9' above grade on the west side of a 31" maple with north/south woven wire fence remains
Witness C	N 75d E	32.0'	Mag nail and washer set in hack 1.0' above grade on the north side of a 7" beech tree

MONUMENT ACCESSORIES			
Other survey grade monuments that were located in the vicinity and their relation to the monument. Witnesses noted as a Rebar Lite are a 5/8" diameter by 16" polycarbonate rod with a 1-1/2" mag nail in top and yellow plastic cap stamped "MONROE COUNTY WITNESS POINT" set 0.1 foot below grade unless otherwise noted.			
Geodetic coordinates in this table are provided in the format Northing, Easting			
(#10722)	S42° 28' 11"E	151.21'	N:1479810.2483' E:3072973.5701' Rebar Lite
(#10725)	S74° 56' 38"E	183.58'	N:1479874.0980' E:3073048.7514' Rebar Lite
(#10728)	N00° 04' 28"E	1324.30'	N:1481246.0816' E:3072873.1958' Cross on 0.4' north-south by 0.5' east-west limestone found 0.2' above ground against west side of 24" pignut hickory tree. BeBI_G08



OFFICE OF THE MONROE COUNTY SURVEYOR • Trohn Enright-Randolph

501 N Morton Street Ste 205, Bloomington, IN 47404 • 812-349-2570 • surveyorsoffice@co.monroe.in.us

MONUMENT RECORD

Corner ID: **BeBI_G09**

Quarter Corner

Sections 8 and 17- T10N-R02W, 2nd P.M.
 Bean Blossom Township, Monroe County, Indiana

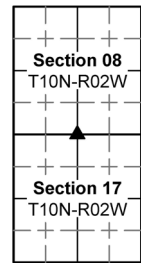


PHOTO IDENTIFIED: Photo Date: 6/11/2024



Photo Orientation & Description: From above



Photo Orientation & Description: From North looking South

EXISTING SURVEY HISTORY Include as much detail and history of the corner as known at the time of perpetuation

ORIGINAL GOVERNMENT SURVEY:

Year Surveyed: 1815 By: William Harris Deputy Surveyor

Where filed or recorded: Original Notes Page 264

Original monument: Post

Bearing Trees or Reference Monuments:

Species	Dia.	Bearing	Distance
Beech	12"	S61°W	15 Links
Beech	12"	S73°E	19 Links

Notes:

SUBSEQUENT CORNER RESTORATION:

Date Surveyed: May 3, 1889. By: M H Buskirk Monroe County Surveyor

Where filed or recorded: Legal Survey Book 2, page 474

Original monument: Not Noted

Bearing Trees or Reference Monuments:

Species	Dia.	Bearing	Distance
Beech	18"	S80°W	44 Links
Hickory	3"	N11°W	44 Links

Notes:

OTHER SURVEY HISTORY: Include details such as surveyor name, date, recording info, monument description, etc.

DocumentDate	SurveyID	Surveyor	Description	InstrumentNo
8/7/1997	RSID004121	Mundy, Michael D	Tract 1- 11.06 acres, Tract 2- 5.54 acres. Little Wolf Rd. Survey to create two parcels from existing 16.57-acre tract for Robert R. Summit.	IN 714909

ORIGINAL OR SUBSEQUENT SURVEY EVIDENCE FOUND BY THE MONROE COUNTY SURVEYORS OFFICE: Include, search area or areas, search procedure, etc.

Date of Field work/Search: 01/06/2021 By: TER/CAR Monument Found: Stone BTs or Reference Objects were established. Project #: BeBI stones. Field Book: 54, page 20. Notes:

ORIGINAL OR SUBSEQUENT SURVEY EVIDENCE FOUND BY THE MONROE COUNTY SURVEYORS OFFICE: Include, search area or areas, search procedure, etc.

Date of Field work/Search: 06/11/2024 By: MES/JMG Monument Found: Stone BTs or Reference Objects were found and additional references established. Project #: 24-001. Field Book: 56, page 59 & 60. Notes:



OFFICE OF THE MONROE COUNTY SURVEYOR • Trohn Enright-Randolph

501 N Morton Street Ste 205, Bloomington, IN 47404 • 812-349-2570 • surveyorsoffice@co.monroe.in.us

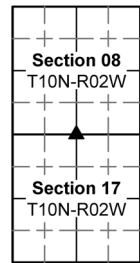
MONUMENT RECORD

Corner ID: **BeBI_G09**

Quarter Corner

Sections 8 and 17- T10N-R02W, 2nd P.M.

Bean Blossom Township, Monroe County, Indiana



OTHER EVIDENCE: Describe corner location relative to nearby features and how to reach the corner location – note fences, roads, timber cutting lines, mow lines, clearings, plantings, streams, topo changes, etc.

We reached the monument by driving past a house and across a yard (with permission) at 8921 North Texas Ridge Road. The stone is at the beginning of an ancient South bound fence line at the West mow line of the yard.

MONUMENT PRESERVATION: Describe work done to preserve existing monument.

GPS coordinates were established on the stone, 2 rebar Lites were set within sight of the stone that could be used to reestablish its location should it become obliterated. References to trees from a prior project by MCSO were verified.

THEORY OF LOCATION: Describe the theory of location for acceptance of this monument. Include monument origin and associated uncertainty.

The stone was found. It is believed to have been set by MH Buskirk, Monroe County Surveyor, on May 3, 1889, via Legal Survey Book 2, page 474, from a found, standing, original witness tree. The stone is, in my opinion, the most reliable evidence of the original location of the South Quarter corner Section 8/North Quarter corner Section 17, Township 10 North Range 2 West, originally established by the bureau of land management and monumented by a wood post in 1815, with negligible uncertainty.

GEODETIC COORDINATES: Northing: 1479921.8', Easting: 3072871.5'

BASIS OF GEODETIC COORDINATES:

The basis of bearings is Grid North NAD83(2011), Indiana West Zone, Epoch 2010.0000, Geoid Model G2012BU7, Datum NAD83_NO_TRANS, US Survey Feet, derived from GPS observations utilizing the Indiana Real-Time Network (INCORS). Coordinate data was collected with a Javad Triumph LS Network Rover and/or with a Sokkia Set 510 Total Station radially from points located with GPS. Distances obtained with GPS have not been adjusted to ground. To adjust grid distances to ground distances multiply them by a scale factor of 1.000041156.

This document is not complete without the associated Corner Perpetuation plat and report of survey for Section 8, Township 10 North Range 2 West by Michael E. Sheppard of the Monroe County Surveyor's Office.

CERTIFICATIONS:



Michael E. Sheppard

Date: 9/17/2024
Michael E. Sheppard
State of Indiana
Professional Surveyor
No. 20100021



Trohn Enright-Randolph

Date: 9/17/2024
Trohn Enright-Randolph
Monroe County Surveyor



Accepted by the Monroe County Surveyor Review Board on 9/17/2024

Donna B. Bickel



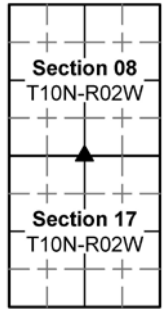
MONUMENT RECORD

Corner ID: **BeBI_G09**

Quarter Corner

Sections 8 & 17- T10N-R02W, 2nd P.M.

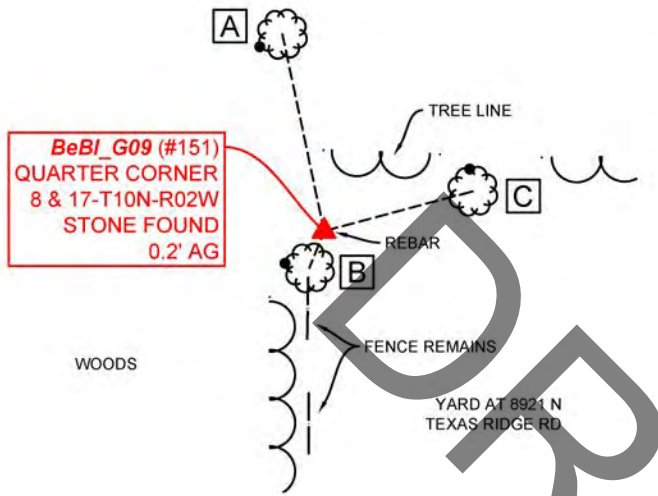
Bean Blossom Township, Monroe County, Indiana



MONUMENT: Describe monument set or found (Include material type, scribing, distance above/below grade, dimensions.)

0.35' X 0.4' limestone found 0.2' above grade with no visible markings. A 5/8" rebar is 0.5' west of the stone 0.5' above grade leaning south.

MONUMENT LOCATION SKETCH:



WITNESS MONUMENT TIES

All ties to new Bearing Trees (BTs) are a mag nail set in a 1-1/2" plastic washer stamped "SURVEY MARKER - DO NOT REMOVE" and hack mark at the root crown (less than 12" above ground) perpendicular to the center of the tree, unless otherwise noted. BT diameters are noted as dbh and are measured approximately 4.5' above ground. Bearings are measured from the monument to the center of the BT, distances are measured from the monument to the mag nail.

ID	BEARING	DISTANCE	DESCRIPTION
Witness A	N 12d W	41.8'	Mag nail and washer set in hack 0.6' above grade on the west side of a 25" white oak with an old metal "No Hunting" sign grown into the east side of the tree.
Witness B	S 22d W	8.2'	Mag nail and washer set in hack 0.9' above grade on the west side of a 31" maple with north/south woven wire fence remains
Witness C	N 75d E	32.0'	Mag nail and washer set in hack 1.0' above grade on the north side of a 7" beech tree



OFFICE OF THE MONROE COUNTY SURVEYOR • Trohn Enright-Randolph

119 W 7th Street, Bloomington, IN 47404 • 812-349-2570 • surveyoroffice@co.monroe.in.us

MONUMENT RECORD

Corner ID: **BeBI_G09**

Quarter Corner

Sections 8 & 17- T10N-R02W, 2nd P.M.

Bean Blossom Township, Monroe County, Indiana

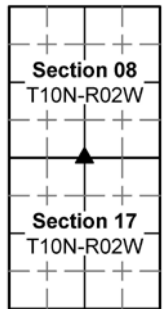


PHOTO IDENTIFIED: *Photo Date:* 01/05/2021



Photo Orientation & Description: BeBI_G09 from above



Photo Orientation & Description: Looking west at BeBI_G09



Photo Orientation & Description: Looking south at BeBI_G09



Photo Orientation & Description: Looking north at BeBI_G09

ORIGINAL OR SUBSEQUENT SURVEY EVIDENCE FOUND: *Include, search area or areas, search procedure, etc.*

Date of Field work/Search: 01/05/2021 *By:* CAR *Monument Found:* Stone *BTs or Reference Objects Found:* Witness trees were located, but no mag nails were found *Project #:* BeBI_Stones *Field Book:* 54/20 *Equipment:* The basis of bearings is Grid North System NAD83(2011)/Indiana West NAVD 88, Epoch 2010.0000, geoid12b_conus.db3, US Survey Feet, derived from GPS observations utilizing the Indiana Real-Time Network (INCORS). Coordinate data was collected with a Javad Triumph LS Network Rover. Distances to witness ties were collected with a Leica Disto laser distance meter. Bearings to witness ties were collected with the internal magnetic compass of the Javad Triumph LS and were automatically adjusted to grid north and are approximately shown hereon for reference. Priority should be given to provided distances over bearings. *Notes:* All witness photos are on file in the Monroe County Surveyor's Office. Unable to collect fixed shot with Javad Rover.

OTHER EVIDENCE: *Describe corner location relative to nearby features and how to reach the corner location – note fences, roads, timber cutting lines, mow lines, clearings, plantings, streams, topo changes, etc.*

The stone is located at the northwest corner of the yard at 8921 N Texas Ridge Rd. There is a 31" maple south of the stone (referenced as Witness B) along a north/south running tree line with woven wire fence remains scattered south.

MONUMENT PRESERVATION: *Describe work done to preserve existing monument.*

Took new witnesses, attempted to collect fixed coordinates but could only collect a floating shot, set a t-post with a "Protect Nearby Survey Marker" sign facing east.



OFFICE OF THE MONROE COUNTY SURVEYOR • Trohn Enright-Randolph

119 W 7th Street, Bloomington, IN 47404 • 812-349-2570 • surveyoroffice@co.monroe.in.us

Page 2 of 3

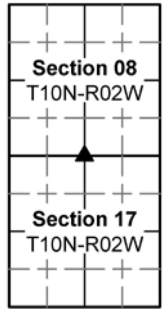
MONUMENT RECORD

Corner ID: **BeBI_G09**

Quarter Corner

Sections 8 & 17- T10N-R02W, 2nd P.M.

Bean Blossom Township, Monroe County, Indiana



THEORY OF LOCATION: Describe the theory of location for acceptance of this monument. Include monument origin and associated uncertainty. The 0.2'x0.4'x0.3' limestone was previously witnessed and the Monument Record prepared under the direction of the Monroe County Surveyor, Kevin Enright, on November 09, 1998 and accepted by the Monroe County Surveyor Review Board. The 1998 Monument Record accepted the 0.2'x0.4'x0.3' limestone per a 1997 Mike Mundy survey on file in the Recorder's Office, instrument number 714909.

CERTIFICATION:



Date: 1/27/2021
Trohn Enright-Randolph
Monroe County Surveyor



Accepted by the Monroe
County Surveyor Review
Board on date: 1/26/2021



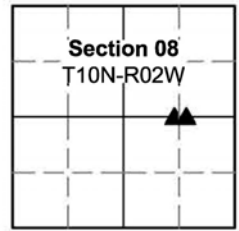
MONUMENT RECORD

Corner ID: **BeBI_H07**

Sixteenth Corner

Section 8-T10N-R02W, 2nd P.M.

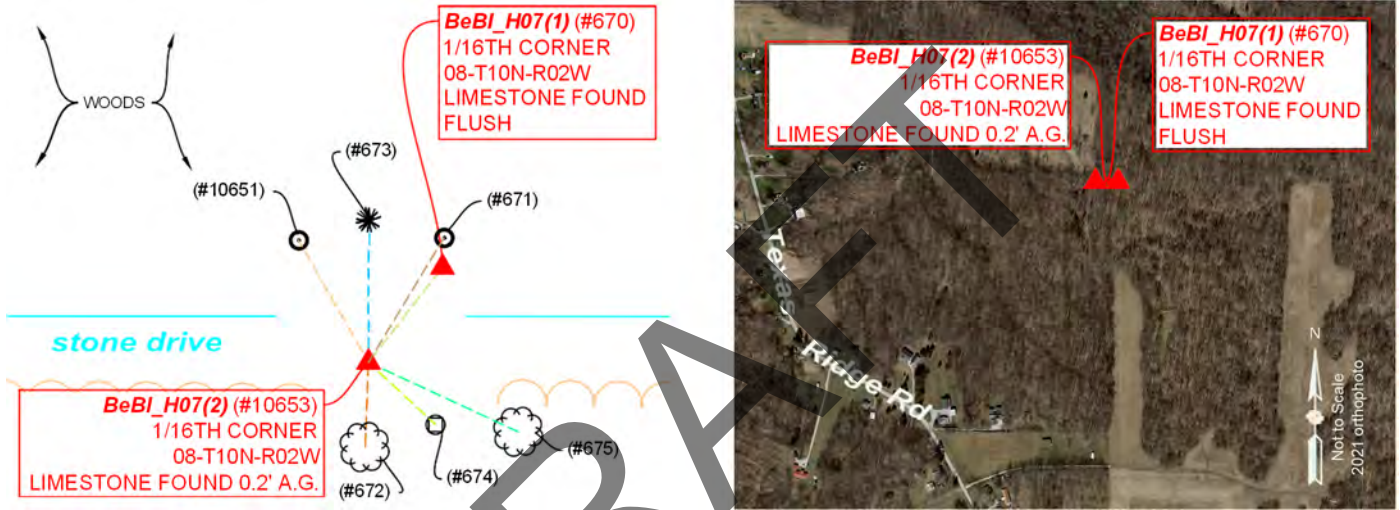
Bean Blossom Township, Monroe County, Indiana



MONUMENT: Describe monument set or found (Include material type, scribing, distance above/below grade, dimensions.)

2 stones were found at this sixteenth Section corner. (#670) herein referred to as BeBI_H07(1) because I believe it to have been set in the first subdivision of the Section by M.H. Buskirk on March 6, 1884, documented in Legal survey book 2, page 399, is a 0.4' north-south by 0.9' east-west limestone with an east-west groove across its top, found flush with ground, on the North side of an old east-west roadbed. It appears remnants of an ancient South bound fence line lines up with this stone. (#10653) herein referred to as BeBI_H07(2) because I believe it to have been set in a subsequent subdivision of the Section by Charles M. Bowers, Deputy of the Monroe County Surveyor on April 26, 1915, documented in Legal survey book 3, page 52, is a 0.5' north-south by 0.6' east-west Limestone found with its west edge (which is slightly higher than its east edge) 0.2' above ground, in the center of an old east-west roadbed. We cut a cross on top of the stone and set a 5/8" rebar with Monroe County witness point cap on top, against the stones North edge, flush with ground. An old North bound fence line lines up with this stone.

MONUMENT LOCATION SKETCH:



WITNESS MONUMENT TIES: Note: all Ties noted hereon are from the center of the cross on #10653 (BeBI_H07(2))

Describe at least three new BT's (Bearing Trees) and/or witness objects established or work done to preserve existing evidence. BT diameters are noted as dbh (diameter at breast height) and are measured approximately 4.5' above ground. Bearings and Distances are measured from the monument to the center of the BT. Bearings and Distances to witness ties were measured with a Sokkia Set 510 Total Station.

ID	Bearing	Distance	Description
#672	S02° 11'W	13.2'	7" diameter Red Oak tree with classified forest and Survey Marker signs attached
#674	S47°14'E	14.3'	Lone Steel post on South side of roadbed
#675	S65°12'E	25.8'	22" diameter Beech tree
#673	N00° 28'E	22.0'	Approximate center of large, woody depression in ground

MONUMENT ACCESSORIES Note: all monuments noted hereon are from the center of the cross on #10653 (BeBI_H07(2))

Other survey grade monuments that were located in the vicinity and their relation to the monument. Witnesses noted as a Rebar Lite are a 5/8" diameter by 16" polycarbonate rod with a 1-1/2" mag nail in top and yellow plastic cap stamped "MONROE COUNTY WITNESS POINT" set 0.1 foot below grade unless otherwise noted.

Geodetic coordinates in this table are provided in the format Northing, Easting

#670	N38° 03' 26"E	18.80'	N:1482537.63 ' E:3074212.98' Stone found at BeBI_H07(1)
#10651	N29° 54' 09"W	21.96'	N:1482541.8579' E:3074190.4500' Graham PC capped rebar found 0.6' AG
#671	N31° 20' 31"E	22.72'	N:1482542.2300' E:3074213.2132' BRG PLS capped rebar found 0.4' AG



OFFICE OF THE MONROE COUNTY SURVEYOR • Trohn Enright-Randolph

501 N Morton Street Ste 205, Bloomington, IN 47404 • 812-349-2570 • surveyorsoffice@co.monroe.in.us

MONUMENT RECORD

Corner ID: **BeBI_H07**

Sixteenth Corner

Section 8-T10N-R02W, 2nd P.M.

Bean Blossom Township, Monroe County, Indiana

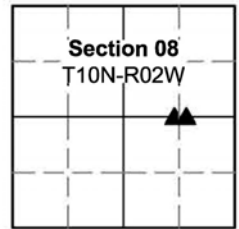


PHOTO IDENTIFIED: *Photo Date:* 07/18/2024



Photo Orientation & Description: BeBI_H07(1) from above



Photo Orientation & Description: BeBI_H07(1) from South Looking North

PHOTO IDENTIFIED: *Photo Date:* 05/04/2024



Photo Orientation & Description: BeBI_H07(2) from above.



Photo Orientation & Description: BeBI_H07(2) from Northeast looking Southwest.



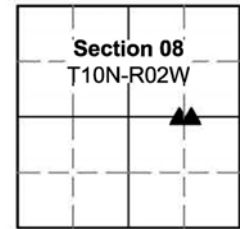
MONUMENT RECORD

Corner ID: **BeBI_H07**

Sixteenth Corner

Section 8-T10N-R02W, 2nd P.M.

Bean Blossom Township, Monroe County, Indiana



EXISTING SURVEY HISTORY *Include as much detail and history of the corner as known at the time of perpetuation*

ORIGINAL GOVERNMENT SURVEY:

This Sixteenth Section Corner was not set in the Original Government Survey.

ORIGINAL CORNER RESTORATION:

BeBI_H07(2) #10653

Date Surveyed: April 26, 1915 *By:* Charles M. Bowers, Deputy of The Monroe County Surveyor

Where filed or recorded: Legal Survey Book 3, Page 52.

Original monument: Not Noted.

Bearing Trees or Reference Monuments:

Species	Dia.	Bearing	Distance
Elm	12"	S25°E	42 ½ Links
B. Oak	10"	N0°	34 ¾ Links

ORIGINAL CORNER ESTABLISHMENT

BeBI_H07(1) #670

Year Surveyed: March 6th 1884 *By:* M.H. Buskirk, Monroe County Surveyor.

Where filed or recorded: Legal Survey Book 2. Page 399.

Original monument: Not Noted

Bearing Trees or Reference Monuments:

Species	Dia.	Bearing	Distance
Black Walnut	1"	N83°E	44 Links
Elm	3"	N66°E	34 ½ Links

Notes: Notes having been established "Half dist bet E 1/2 mi & center".

Notes: Makes no mention of method of establishment or the 1884 survey. Woody depression in ground, at the beginning of an old North fence line, located 22' North is believed to be remains of the 1915 Oak tree.

SUBSEQUENT CORNER RESTORATION:

None Found

SUBSEQUENT CORNER RESTORATION:

None Found

OTHER SURVEY HISTORY: *Include details such as surveyor name, date, recording info, monument description, etc.*

DocumentDate	SurveyID	Surveyor	Description	InstrumentNo
4/13/2009	005476	David R. Meier	Administrative subdivision	

ORIGINAL OR SUBSEQUENT SURVEY EVIDENCE FOUND BY THE MONROE COUNTY SURVEYORS OFFICE: *Include, search area or areas, search procedure, etc.*

Date of Field work/Search: 05/30/24 & 06/07/2024 *By:* MES/JMG/WEP *Monument Found:* 2 stones *BTs or Reference Objects Found:* possibly (remains), and new references established *Project #:* 24-001 *Field Book:* 56, pages 47 & 51 *Notes:*

OTHER EVIDENCE: *Describe corner location relative to nearby features and how to reach the corner location – note fences, roads, timber cutting lines, mow lines, clearings, plantings, streams, topo changes, etc.*

We reached the stone by walking down (East) an old roadbed, ¼ Mile east from a house at 9098 N Texas Ridge Road Gosport Indiana. BeBI_H07(1) (#670) is on the North side of the old roadbed, ±in line with ancient South fence remnants. BeBI_H07(2) (#10653) is in the center of the old roadbed, in line with an old North bound fence line.

MONUMENT PRESERVATION: *Describe work done to preserve existing monument.*

We established GPS coordinates on the stones. Their relation to each other and 2 found rebars is being documented. A Monroe County Surveyor marker sign was nailed to a 7" diameter Red Oak tree 5' above ground (just above a classified forest sign observed nailed to said tree), 13' South of #10653 (BeBI_H07(2)). A steel post with Monroe County Surveyor marker sign post attached 3 ½' above ground, facing West, was driven 0.5' North of #670 (BeBI_H07(1)).



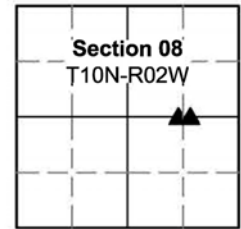
MONUMENT RECORD

Corner ID: **BeBI_H07**

Sixteenth Corner

Section 8-T10N-R02W, 2nd P.M.

Bean Blossom Township, Monroe County, Indiana



THEORY OF LOCATION: Describe the theory of location for acceptance of this monument. Include monument origin and associated uncertainty. Both stones were found, and both have origins in Monroe County Legal survey books. Which stone controls this corner or parcel boundaries is open to opinion and legal interpretation. This is the first time this Surveyor has seen something like this. It appears BeBI_H07(1) (#670) is the first monument set to monument this Sixteenth Section corner and a Southbound fence was built in good faith, based on its location. It appears a Northbound fence was built in good faith, based on the location of the stone at BeBI_H07(2) (#10653). How Surveyors use them as boundary corners going forward is up to each of their professional opinions. Since they are 18.8' apart, they both bear an uncertainty of that magnitude in my opinion.

GEODETIC COORDINATES BeBI_H07(1) #670: Northing:1482537.6', Easting:3074213.0'

GEODETIC COORDINATES BeBI_H07(2) #10653: Northing:1482522.8', Easting:3074201.4'

BASIS OF GEODETIC COORDINATES:

The basis of bearings is Grid North NAD83(2011), Indiana West Zone, Epoch 2010.0000, Geoid Model G2012BU7, Datum NAD83_NO_TRANS, US Survey Feet, derived from GPS observations utilizing the Indiana Real-Time Network (INCORS). Coordinate data was collected with a Javad Triumph LS Network Rover and/or with a Sokkia Set 510 Total Station radially from points located with GPS. Distances obtained with GPS have not been adjusted to ground. To adjust grid distances to ground distances multiply them by a scale factor of 1.000041156.

This document is not complete without the associated Corner Perpetuation plat and report of survey for Section 8, Township 10 North Range 2 West by Michael E. Sheppard of the Monroe County Surveyor's Office.

CERTIFICATIONS:



Michael E. Sheppard

Date:9/17/2024
Michael E. Sheppard
State of Indiana
Professional Surveyor
No. 20100021



Trohn Enright-Randolph

Date:9/17/2024
Trohn Enright-Randolph
Monroe County Surveyor



Accepted by the Monroe
County Surveyor Review
Board on 9/17/2024

Donna Babick

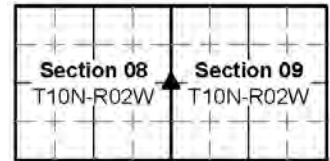


MONUMENT RECORD

Corner ID: **BeBI_I07**

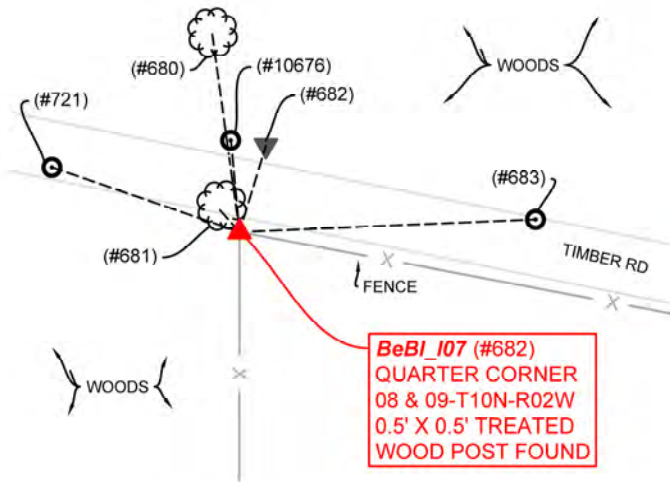
Quarter Corner

Sections 8 & 9 –T10N-R02W, 2nd P.M.
 Bean Blossom Township, Monroe County, Indiana



MONUMENT: Describe monument set or found (Include material type, scribing, distance above/below grade, dimensions.)
 (#682) 0.5' by 0.5' treated wood post in concrete, at the beginning of an eastbound fence line, on the south side of an old roadbed and ± at the extension of ancient North and South fences.

MONUMENT LOCATION SKETCH:



WITNESS MONUMENT TIES: Describe at least three new BT's (Bearing Trees) and/or witness objects established or work done to preserve existing evidence. BT diameters are noted as dbh (diameter at breast height) and are measured approximately 4.5' above ground. Bearings and Distances are measured from the monument to the center of the BT. Bearings and Distances to witness ties were measured with a Sokkia Set 510 Total Station.

ID	Bearing	Distance	Description
(#681)	N41° 50'W	6.1'	20" diameter Burr Oak tree
(#684)	N17° 00'E	18.9'	Top of leaning (East) 0.5' north-south by 0.3' east-west Granite stone found with top 0.4' AG
(#680)	N07° 51'W	41.7'	21" diameter Shagbark Hickory tree

MONUMENT ACCESSORIES

Other survey grade monuments that were located in the vicinity and their relation to the monument. Witnesses noted as a Rebar Lite are a 5/8" diameter by 16" polycarbonate rod with a 1-1/2" mag nail in top and yellow plastic cap stamped "MONROE COUNTY WITNESS POINT" set 0.1 foot below grade unless otherwise noted.

Geodetic coordinates in this table are provided in the format Northing, Easting

(#10676)	N05° 19' 09"W	19.23'	N:1482536.1114' E:3075524.9841' 1/2" rebar found 0.2' AG, at base of rotted and fallen wood corner post at east-west and north fence corner.
(#721)	N70° 57' 44"W	41.42'	N:1482530.4726' E:3075487.6126' Rebar Lite set at South edge of old roadbed
(#683)	N87° 35' 20"E	62.02'	N:1482519.5710' E:3075588.7366' Rebar Lite set at North edge of old roadbed
(#720)	S89° 46' 07"W	158.61'	N:1482516.3213' E:3075368.1579' Mag hub nail set in corner of grass field
(#10708)	S67° 06' 57"W	225.14'	N:1482429.4107' E:3075319.3455' Mag hub nail set in grass field
(#874)	S88° 56' 18"E	1353.15'	N:1482491.8912' E:3076879.6829' Mag nail found flush ± center of road at east bound fence extended



OFFICE OF THE MONROE COUNTY SURVEYOR • Trohn Enright-Randolph

501 N Morton Street Ste 205, Bloomington, IN 47404 • 812-349-2570 • surveyorsoffice@co.monroe.in.us

MONUMENT RECORD

Corner ID: **BeBI_I07**

Quarter Corner

Sections 8 & 9 –T10N-R02W, 2nd P.M.
Bean Blossom Township, Monroe County, Indiana

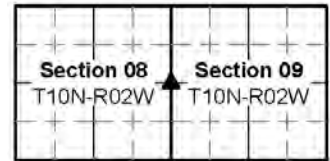


PHOTO IDENTIFIED: Photo Date: 07/24/2024



Photo Orientation & Description: From Northeast looking Southwest



Photo Orientation & Description: From South looking North

EXISTING SURVEY HISTORY Include as much detail and history of the corner as known at the time of perpetuation

ORIGINAL GOVERNMENT SURVEY:

Year Surveyed: 1815 By: William Harris Deputy Surveyor

Where filed or recorded: Original Notes Page 259

Original monument: Post

Bearing Trees or Reference Monuments:

Species	Dia.	Bearing	Distance
Beech	12"	S24°W	13 Links
Beech	18"	N25°W	9 Links

Notes:

SUBSEQUENT CORNER RESTORATION:

None Found

SUBSEQUENT CORNER RESTORATION:

Date Surveyed: Feb. 18, 1890 By: M.H. Buskirk

Where filed or recorded: Legal Survey Book 2, page 487

Original monument: **Not Noted**

Bearing Trees or Reference Monuments:

Species	Dia.	Bearing	Distance
Walnut	1"	S84°E	22 Links
Ash	1"	S6°E	24 Links

Notes:

OTHER SURVEY HISTORY: Include details such as surveyor name, date, recording info, monument description, etc.

DocumentDate	SurveyID	Surveyor	Description	InstrumentNo
7/28/1982	RSID005502	Farkas, Edmund O.	94.99 Acres	
4/17/2000	RSID004271	Graham, Raymond	104.54 acre survey	
5/1/2008	RSID004278	Guerrettaz, Bernard	"Caudill - Caudill Admin. Subd. Type ""E"""	

ORIGINAL OR SUBSEQUENT SURVEY EVIDENCE FOUND BY THE MONROE COUNTY SURVEYORS OFFICE: Include, search area or areas, search procedure, etc.

Date of Field work/Search: 06/07/2024 & 06/10/24 By: MES/JMG/WEP Monument Found: Wood Post and rebar to the North. BTs or Reference Objects Found: No, but new references established Project #: 24-001 Field Book: 56, pages 52, 53 & 58. Notes: We spent a lot of time at this corner digging and probing for a stone, even on other dates not noted in field book.



OFFICE OF THE MONROE COUNTY SURVEYOR • Trohn Enright-Randolph

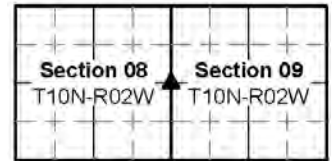
501 N Morton Street Ste 205, Bloomington, IN 47404 • 812-349-2570 • surveyorsoffice@co.monroe.in.us

MONUMENT RECORD

Corner ID: **BeBI_I07**

Quarter Corner

Sections 8 & 9 –T10N-R02W, 2nd P.M.
Bean Blossom Township, Monroe County, Indiana



OTHER EVIDENCE: *Describe corner location relative to nearby features and how to reach the corner location – note fences, roads, timber cutting lines, mow lines, clearings, plantings, streams, topo changes, etc.*

The post is at the beginning of an Eastbound fence line and \pm at the extension of ancient North and South fences. We drove to near the post, through an overgrown field on the property at 9010 North Texas Ridge Road Gosport Indiana, with the permission of the landowner, who unlocked his gate for us once, on other trips, we walked down (East) an old abandoned roadbed beginning at 9098 North Texas Ridge Road Gosport Indiana.

MONUMENT PRESERVATION: *Describe work done to preserve existing monument.*

GPS coordinates were established on the post. 2 Rebar Lites were set within sight of the Post, and 2 mag hub nails that were used to shoot into the post, from a field, as well as a found $\frac{1}{2}$ " diameter rebar were referenced, that could be used to reestablish its location, should it become obliterated. Additionally, references were made to trees, and a stone found, to visually aid in finding it. A Monroe County Surveyors Office survey marker sign was nailed to the North side of the Post.

THEORY OF LOCATION: *Describe the theory of location for acceptance of this monument. Include monument origin and associated uncertainty.*

The post (#682) was found. The stone found at BeBI_I08 (#703) is cited in Legal Survey Book 2, page 487 as having been set midway between the West half mile corner of Section 9 and the Southwest corner of said Section. Extending a line from the post found at the Southwest corner of said Section (#691 BeBI_I09) through the stone at BeBI_I08 (#703) and doubling the distance would create a point $\pm 8'$ South and $3.7'$ East of this post. We searched and probed this area diligently, finding numerous small limestones around and South of the post along with 1 limestone ledge, but none of the stones had survey stone characteristics. We also observed fence and remnants of an old, rotted post buried at a depth of $1 \frac{1}{2}'$ on the South side of the post, which fence, and post may have been an ancient fence corner. Thus, we concluded the area had been subject to some kind of earth work at one time. The extension of and double the distance of a line from the rebar set at the center of Section 8 (from original witnesses) (#1000 BeBI_G07) through the oldest stone at BeBI_H07(1) (#670) (which is cited as having been established mid-way between the Center and East half mile corner of Section 8) would net a location $\pm 5'$ North and $24'$ East of the Post at #682. The extension of a line from the rebar set at the center of Section 8 (from original witnesses) (#1000 BeBI_G07) through the newest stone at BeBI_H07(2) (#10653) would net a location $\pm 25'$ South of the Post at #682. An online equidistant split between the sixteenth corner stones found to the North and South of the Post would net a location $\pm 3.2'$ South and $\pm 1.8'$ West of the Post. The extension of a line from a stone at the center of Section 9 (#10630 BeBI_K07) through a mag nail (#874) found in the center of a north-south road, at the extension of an old east bound fence line (approximate BeBI_J07) would net a location $\pm 25'$ South of the post at #682. Said mag nail at #874 is $12.65'$ South of a straight line between the post at #682 and the stone at BeBI_K07. The mag nail is $22.2'$ South of a straight line between said BeBI_K07 and a rebar (#10676) that has been held by other surveyors as the corner at BeBI_I07. These facts create a large area of uncertainty surrounding the original location of this corner and this post is within the area of uncertainty in my opinion. Several other surveyors have held the fence corner on the North side of the old roadbed, and somebody set a $\frac{1}{2}'$ rebar at its base (#10676) which is $\pm 19'$ North of the post accepted this survey. It is my opinion that the data shows this second fence corner/ $\frac{1}{2}$ " rebar is too far North to be considered the Quarter Section corner at BeBI_I07 and it does not appear any of these other surveyors knew the location of the stones at BeBI_I06 or BeBI_I08. It is evident somebody took great care in setting the treated post in concrete and it is in my opinion the most reliable evidence of the original location of the corner, though with an uncertainty of $20'$ north-south and $4'$ east-west.

GEODETIC COORDINATES: *Northing:1482517.0' Easting:3075526.8'*



OFFICE OF THE MONROE COUNTY SURVEYOR • Trohn Enright-Randolph

501 N Morton Street Ste 205, Bloomington, IN 47404 • 812-349-2570 • surveyorsoffice@co.monroe.in.us

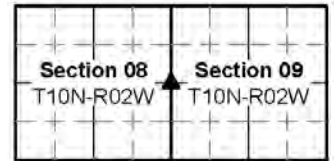
Page 3 of 4

MONUMENT RECORD

Corner ID: **BeBI_I07**

Quarter Corner

Sections 8 & 9 –T10N-R02W, 2nd P.M.
Bean Blossom Township, Monroe County, Indiana



BASIS OF GEODETIC COORDINATES:

The basis of bearings is Grid North NAD83(2011), Indiana West Zone, Epoch 2010.0000, Geoid Model G2012BU7, Datum NAD83_NO_TRANS, US Survey Feet, derived from GPS observations utilizing the Indiana Real-Time Network (INCORS). Coordinate data was collected with a Javad Triumph LS Network Rover and/or with a Sokkia Set 510 Total Station radially from points located with GPS. Distances obtained with GPS have not been adjusted to ground. To adjust grid distances to ground distances multiply them by a scale factor of 1.000041156.

This document is not complete without the associated Corner Perpetuation plat and report of survey for Section 8 or 9, Township 10 North Range 2 West by Michael E. Sheppard of the Monroe County Surveyor's Office.

CERTIFICATIONS:



Michael E. Sheppard

Date:9/17/2024
Michael E. Sheppard
State of Indiana
Professional Surveyor
No. 20100021



Trohn Enright-Randolph

Date:9/17/2024
Trohn Enright-Randolph
Monroe County Surveyor



Accepted by the Monroe
County Surveyor Review
Board on 9/17/2024

Donna Babick

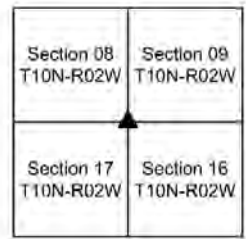


MONUMENT RECORD

Corner ID: **BeBI_I09**

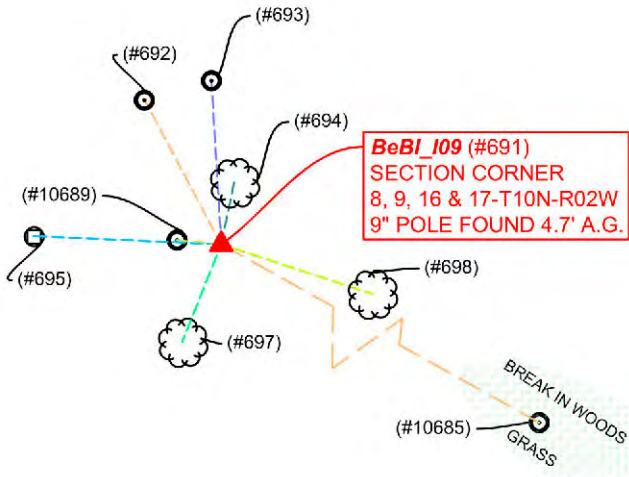
Section Corner

Sections 8, 9, 16 & 17-T10N-R02W, 2nd P.M.
Bean Blossom Township, Monroe County, Indiana



MONUMENT: Describe monument set or found (Include material type, scribing, distance above/below grade, dimensions.)
(#691) 9" diameter, treated, power pole type, wood post, with metal plate on top, found with top 4.7' above ground.

MONUMENT LOCATION SKETCH:



WITNESS MONUMENT TIES: Describe at least three new BT's (Bearing Trees) and/or witness objects established or work done to preserve existing evidence. BT diameters are noted as dbh (diameter at breast height) and are measured approximately 4.5' above ground. Bearings and Distances are measured from the monument to the center of the BT. Bearings and Distances to witness ties were measured with a Sokkia Set 510 Total Station.

ID	Bearing	Distance	Description
(#694)	N11° 44'E	9.8'	8" diameter Shagbark Hickory tree
(#698)	S71° 49'E	24.8'	6" diameter Sugar Maple tree
(697)	S21° 50'W	16.4'	18" diameter Sugar Maple tree
(#695)	N87° 30'W	29.3'	Steel post with white PVC pipe over it
(#693)	N03° 25'W	25.6'	0.6' north-south by 1.1' east-west limestone found with top 0.4' AG

MONUMENT ACCESSORIES

Other survey grade monuments that were located in the vicinity and their relation to the monument. Witnesses noted as a Rebar Lite are a 5/8" diameter by 16" polycarbonate rod with a 1-1/2" mag nail in top and yellow plastic cap stamped "MONROE COUNTY WITNESS POINT" set 0.1 foot below grade unless otherwise noted.

Geodetic coordinates in this table are provided in the format Northing, Easting

(#10689)	N84° 43' 27"W	6.92'	N:1479912.6708 ' E:3075513.9889' Rebar Lite
(#692)	N27° 56' 29"W	25.55'	N:1479934.6096' E:3075508.9058' Rebar Lite
(#10685)	S60° 55' 59"E	146.47'	N:1479840.8766' E:3075648.8982' Rebar Lite in grass field



OFFICE OF THE MONROE COUNTY SURVEYOR • Trohn Enright-Randolph

501 N Morton Street Ste 205, Bloomington, IN 47404 • 812-349-2570 • surveyorsoffice@co.monroe.in.us

MONUMENT RECORD

Corner ID: **BeBI_I09**

Section Corner

Sections 8, 9, 16 & 17-T10N-R02W, 2nd P.M.
 Bean Blossom Township, Monroe County, Indiana

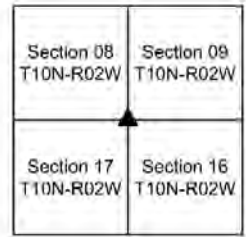


PHOTO IDENTIFIED: Photo Date: 06/10/24



Photo Orientation & Description: From North looking South



Photo Orientation & Description: From South looking North

EXISTING SURVEY HISTORY Include as much detail and history of the corner as known at the time of perpetuation

ORIGINAL GOVERNMENT SURVEY:

Year Surveyed: 1815 By: William Harris, deputy Surveyor
 Where filed or recorded: Original notes pages 258 & 259
 Original monument: Post
 Bearing Trees or Reference Monuments: None Cited.

Notes: On page 258 of the original notes, it is noted as starting from this corner and running South on a random line, then back North and on page 259 it is noted as starting at this corner and running East. None of these notes note actually setting or referencing this corner though they do cite a Post.

SUBSEQUENT CORNER RESTORATION:

None Found.

OTHER SURVEY HISTORY: Include details such as surveyor name, date, recording info, monument description, etc.

Date	RSID	Surveyor	Description	File Location
4/17/2000	RSID004271	Graham, Raymond	104.54 acre survey	
10/3/2006	RSID004283	Guerrettaz, Bernard	"Caudill Admin. Type ""E"" Subd."	
6/1/2007	RSID005501	Bledsoe, Ben E.	"Moon Road Boundary Survey	
5/1/2008	RSID004278	Guerrettaz, Bernard	"Caudill - Caudill Admin. Subd. Type ""E""	
9/22/2011	RSID004286	Deckard, Eric	"Goodrich Type ""E"" Admin. Subd. Final Plat"	2011016433.IN



OFFICE OF THE MONROE COUNTY SURVEYOR • Trohn Enright-Randolph

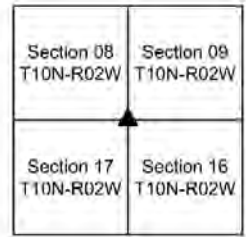
501 N Morton Street Ste 205, Bloomington, IN 47404 • 812-349-2570 • surveyorsoffice@co.monroe.in.us

MONUMENT RECORD

Corner ID: **BeBI_I09**

Section Corner

Sections 8, 9, 16 & 17-T10N-R02W, 2nd P.M.
Bean Blossom Township, Monroe County, Indiana



10/3/2006	RSID004283	Lee Guerrettaz, Bernard	"Caudill Admin. Type ""E"" Subd."	
-----------	------------	-------------------------------	-----------------------------------	--

ORIGINAL OR SUBSEQUENT SURVEY EVIDENCE FOUND BY THE MONROE COUNTY SURVEYORS OFFICE: *Include, search area or areas, search procedure, etc.*

Date of Field work/Search: 06/10/2024 *By:* MES/JMG *Monument Found:* Wood Post *BTs or Reference Objects Found:* No, but references established *Project #:* 24-001 *Field Book:* 56, pages 54 & 55 *Notes:*

OTHER EVIDENCE: *Describe corner location relative to nearby features and how to reach the corner location – note fences, roads, timber cutting lines, mow lines, clearings, plantings, streams, topo changes, etc.*

The post is at an east-west and south occupation corner. We drove to near the post, through an overgrown field on the property at 9010 North Texas Ridge Road Gosport Indiana, with the permission of the landowner, who unlocked his gate for us.

MONUMENT PRESERVATION: *Describe work done to preserve existing monument.*

GPS coordinates were established on the post. 2 Rebar Lites were set within sight of the Post, and a third was set in a nearby field, that could be used to reestablish its location, should it become obliterated. Additionally, references were made to trees, a post and a stone found, to visually aid in finding it. A Monroe County Surveyors Office survey marker sign was nailed to the Southeast side of the Post, 4' AG.

THEORY OF LOCATION: *Describe the theory of location for acceptance of this monument. Include monument origin and associated uncertainty.*

The Post was found at an old occupation corner and thus the historically preserved, accepted and used location of the Section corner. It is known to have been used by numerous surveyors in modern history and is, in my opinion, the most reliable evidence of the original location of the Section corner common to Sections 8,9,16&17, originally established by the Bureau of Land Management and monumented with a wood Post in 1815, with negligible uncertainty.

GEODETIC COORDINATES: *Northing:* 1479912.0' *Eastings:* 3075520.9'

BASIS OF GEODETIC COORDINATES:

The basis of bearings is Grid North NAD83(2011), Indiana West Zone, Epoch 2010.0000, Geoid Model G2012BU7, Datum NAD83_NO_TRANS, US Survey Feet, derived from GPS observations utilizing the Indiana Real-Time Network (INCORS). Coordinate data was collected with a Javad Triumph LS Network Rover and/or with a Sokkia Set 510 Total Station radially from points located with GPS. Distances obtained with GPS have not been adjusted to ground. To adjust grid distances to ground distances multiply them by a scale factor of 1.000041156.

This document is not complete without the associated Corner Perpetuation plat and report of survey for Section 8 or 9, Township 10 North Range 2 West, by Michael E. Sheppard of the Monroe County Surveyor's Office.



MONUMENT RECORD

Corner ID: **BeBI_I09**

Section Corner

Sections 8, 9, 16 & 17-T10N-R02W, 2nd P.M.
Bean Blossom Township, Monroe County, Indiana

Section 08 T10N-R02W	Section 09 T10N-R02W
Section 17 T10N-R02W	Section 16 T10N-R02W

CERTIFICATIONS:



Michael E. Sheppard

Date: 9/17/2024
Michael E. Sheppard
State of Indiana
Professional Surveyor
No. 20100021



Trohn Enright-Randolph

Date: 9/17/2024
Trohn Enright-Randolph
Monroe County Surveyor



Accepted by the Monroe
County Surveyor Review
Board on 9/17/2024

Donna Babich

