



AGENDA
SURVEYOR REVIEW BOARD
HYBRID MEETING Via Microsoft Teams
501 N. Morton Street Room 211
4:00 PM, Tuesday, December 17, 2024

- I. Call to Order**
- II. Approval of agenda**
- III. Approval of minutes from October 15, 2024**
- IV. New Business**
 - a. Office Update
 - b. Adoption of 2025 MCSRБ Schedule
 - c. Question to Board Members: Would they like to serve again in 2025
 - d. Board Member Questions?
- V. Certification of corners:**
 - a. County Surveyor Preservation: *SaCr_G15
 - b. County Surveyor Perpetuation: BeB1_I03, BeB1_I05, BeB1_K03, BeB1_K05, BeB1_M01, *BeB1_M03, BeB1_M04, BeB1_M05
 - c. Corner Documentation Program: **N/A**
 - d. Professional Services Agreement: **N/A**
- VI. Discussion Plat Review**
- VII. Public input**
- VIII. Adoption of next meeting date: January 21?**
- IX. Adjournment**

**Has previous certification*

Teams Meeting Information

https://teams.microsoft.com/l/meetup-join/19%3ameeting_MzRkODI1M2QtMjVkbkYS00NDdjLTk5NjktOGE2Mzg2NWZhNTQx%40thread.v2/0?cont ext=%7b%22id%22%3a%2249a60700-4c0c-4ece-b904-fb92c600e553%22%2c%22oid%22%3a%22db83725f-c48f-476f-8894-d4bb087d29f8%22%7d

Meeting ID: 247 640 086 109

Passcode: BTv9wR

Or call in (audio only)

[+1 872-242-9432](tel:+1872-242-9432), [225452587](tel:+1225452587) United States, Chicago

[Find a local number](#) [Reset PIN](#)

The meeting is open to the public. Dates are subject to change.

For additional information, please call the Office of the Monroe County Surveyor at (812) 349-2570.

Anyone who requires an auxiliary aid or service for effective communication, or a modification of policies or procedures to participate in a program, service, or activity of Monroe County, should contact Monroe County Title VI Coordinator, (812) 349-2553, as soon as possible but no later than forty-eight (48) hours before the scheduled event.

Individuals requiring special language services should, if possible, Government Title VI Coordinator at least seventy-two (72) hours prior to the date on which the services will be needed.

Survey Utility



MINUTES
SURVEYOR REVIEW BOARD
HYBRID MEETING Via Microsoft Teams
501 N. Morton Street Room 211
4:00 PM, Tuesday, October 15, 2024

MEMBERS PRESENT: Rachel Oser, Eric Deckard, Todd Borgman

MEMBERS ABSENT: None

STAFF: Trohn Enright-Randolph (County Surveyor), Jason George (Survey Technician), Mike Sheppard (Professional Surveyor), Donna Barbrick (Secretary)

OTHERS: Scott

- I. Call to Order by Trohn Enright-Randolph at approximately 4:05pm**
- II. Approval of agenda. MOTION to approve by Todd Borgman. Second by Eric Deckard. VOTE: AYE (unanimous). Motion carried.**
- III. Approval of minutes from September 17, 2024. MOTION to approve by Deckard; second by Oser. VOTE by roll call. YES-2 (Deckard, Oser); ABSTAIN-1 (Borgman). Motion carried.**
- IV. New Business**
 - a. **Office Update.** Trohn spoke about recent conversations concerning plat review.
 - b. **Board Member Questions?**
- V. Certification of corners:**
 - a. **Professional Services Agreement: VanBu_A13, VanBu_A15*, VanBu_A17, VanBu_A19, VanBu_A21, VanBu_A23, VanBu_C13*, VanBu_C15*, VanBu_C17*, VanBu_C19*, VanBu_C21, VanBu_C23*, VanBu_C25, VanBu_E13, VanBu_E15, VanBu_E17, VanBu_E19*, VanBu_E21, VanBu_E23 & VanBu_E25***

Trohn said in 2017 the MCSO created a PS position and we started doing boundary perpetuation surveys to go along with our perpetuation efforts. He said we have been saving dollars in our corner fund and one way to expedite the perpetuation of this county was to enter into service agreements. He said this is a professional services agreement and Oser Mapping helped us conduct this effort in Van Buren. He asked Rachel Oser to go through the survey as far as any issues that were uncovered. Oser said these three section surveys are pretty straightforward. She talked about a 1974 survey called the Townsend survey by Ray Graham who was county surveyor at that time. She said the monuments have been consistently held by surveyors. She said I can figure out with some of them what he found and how he established what he set. She said she did not hold pipes at the center of Section 19. what was set by Graham. She talked about a survey by Lee Utt. She said the other big survey was by Edmund Farkas; he surveyed the west half of the east half of Section 19 and that is still the same landowner now and that survey is the origin of the ½” rebar which you can see it not where Ray Graham had calculated that to be. Graham had calculated it to be 2640 exactly, but he had not monumented it and then Farcas proportioned between the Graham limestones on either end and set that half inch rebar. She said the way I set up the center of Section 19 was in line with the three pinch pipes and at the distance from Lee Utt’s worksheets to this place that I think was a fence post.

She said on the west quarter, there is an Utt rebar at the east quarter of Section 24. She said surveyors have been holding the Utt rebar at the east quarter. She said she established the west quarter of 19 at on line between the Utt rebar and the railroad spike at A17.

Deckard had a question about A15 where Oser set a rebar and a distance between a rebar she set and a fence line. She said surveys in Greene County are relying on the Utt rebar for the county line. She said C15 is in line with the fence going south and it's 3.7 feet north of the fence line going west.

VanBu_C17. Oser said a Ramsay rebar was found 4" below grade. She said she does not know how this was established. She said it has been accepted by Doug Graham and herself. She said it matches up with fencing to the north. She said there are two stones in Section 30 that match up closely.

VanBu_E15. Oser said E17, E15 and A13 are all already tied off and I did not have any issues. She said E15 is a cut limestone set by Ray Graham in 1974. She observed that it was 17.2' from the fence line. She said it has been accepted by Bledsoe, Graham, Zimmer and Deckard.

VanBu_A17. Oser said there were two railroad spikes there and she did not hold the one that the county has as the record monument. Oser talked about the history of the corner and that a second rebar was set in 1998 by Lee Utt. She said on the survey history she talked about which railroad spike was accepted by different surveyors. She said in 1998 Bledsoe did a corner perpetuation for Greene County and decided to hold the railroad spike as the Monroe County corner. She said he set the Greene County corner with a railroad spike 5.28 feet south. Then Utt set the Monroe County corner 5.28 feet north and Kevin tied off that corner. Then Utt was surveying again and he held the railroad spike that he previously said was wrong. She said the railroad spike that Bledsoe held was the basis for his proportions running down that Greene County line; he set Harrison monuments and they are all based on that breakdown. She said so I am going back to what was held as the Monroe County corner before Utt set the third monument that is not there anymore.

Motion by Deckard to APPROVE VanBu_A13, 15, 17, VanBu_C13, C15, C17 and VanBu_E13, E15 and E17. Second by Borgman. VOTE: YES (Borgman, Deckard), ABSTAIN (Oser). Motion carried.

VanBu_C19. A marked stone found.

VanBu_C21. A marked stone found.

VanBu_E19. A mag spike set.

VanBu_E21. A pipe found, previously tied off by the county.

VanBu_A21. A Harrison monument found, set by Bledsoe in 1998. Oser gave some history on this corner and said it has been the county corner of record since 2008.

VanBu_A19. A Harrison monument found. Oser said it was set proportionately. There was a discussion of survey records in the area.

VanBu_A23. A marked stone found, four feet east of an established fence.

VanBu_E23. A pipe found that has been tied off by the county previously.

VanBu_E25. Oser said the southeast of Section 31 was set by Ben Wilson in 2007 using existing evidence of county roads and held by Phil Tapp, Matt Badger, Randolph Compton, Harry Jones, Dustin Ballard and Steve Graham. Trohn said we did have a pending record that may have been tabled by SRB.

VanBu_C25. 1 1/2" drill steel found (a big iron pipe). She said it is two feet from the fence and was tied off previously.

VanBu_C23. Oser said what is a little bit funky about this is Phil Tapp calculated the center at the intersection of opposite quarter corners but then he accidentally set the rebar off of that line. She said then an INDOT surveyor found that Tapp rebar and held it, so instead of calculating it at the exact intersection, we held that Tapp rebar and then Eric and Todd have followed suit. She said I also calculated it because it is on a blind hill in the middle of the state highway. She said but I calculated it based on that Tapp rebar instead of the straight intersection.

Trohn said an initiative that Rachel and I talked about when she worked in the Surveyor's Office was how to reduce risks of surveyors on busy interstates. He said whatever we can do to reduce the risk we can attempt to do that. Rachel said the idea is that if we had set, someone might feel the need to uncover it but if it is never set, then nobody ever has to uncover it.

Motion by Borgman to APPROVE Van Buren A19, A21, A23, Van Buren C19, C21, C23, C25, Van Buren E19, E21, E23, and E25. Second by Deckard. VOTE: YES-2 (Deckard, Borgman); ABSTAIN-1 (Oser). Motion carried.

VI. Discussion Plat Review

Trohn said in 2006, we tightened the standards to best perpetuate the county. He said as part of that we started to assist Planning. He said one of the county surveyor's roles is to serve on the Plan Commission and within the Subdivision Control Ordinance there's a final subdivision plat, which alludes to the surveyor adhering to the administrative code of a professional land surveyor. He said we had an extensive review process and over the years we shifted a lot of that over to Planning. He said when I was able to get another PS in the office, we got back involved with looking at these.

He said my hope is to sit down with Planning and figure out a better way of communicating. He said Planning has also extended their interest in working with the SRB on certain issues. He said our approach is based off the ordinance itself, but I want to make sure it's known we are open and available to talk. He said we will never work in a vacuum. Deckard about how to move forward with platting and the new CDO coming up. Trohn said there is an opportunity to put together another checklist for them to do the review again. There was a discussion about a checklist that Planning could do without being surveyors. Borgman suggested getting feedback from not only SRB but other surveyors in the county before discussions in a public forum. Trohn reiterated points from the discussion. Trohn said there are two different conversations, a CDO meeting with the SRB and the other about plat review. There was a discussion of off-the-record and then on-the-record. Trohn said he would talk to county legal for advice before scheduling a special meeting.

- VII. Public input (none)**
- VIII. Adoption of next meeting date: November 19**
- IX. Adjournment. Meeting adjourned at approximately 6:25 pm.**

Minutes approved: _____

Donna Barbrick, Secretary _____

PROPOSED SCHEDULE 2025 MONROE COUNTY SURVEYOR REVIEW BOARD

Location: Monroe County Government-North Showers, 501 N. Morton Street Suite 211, Bloomington, IN

Time: 4:00-6:00 pm

Meeting Schedule:

January 21 February 18 April 15

May 13 June 17 July 15

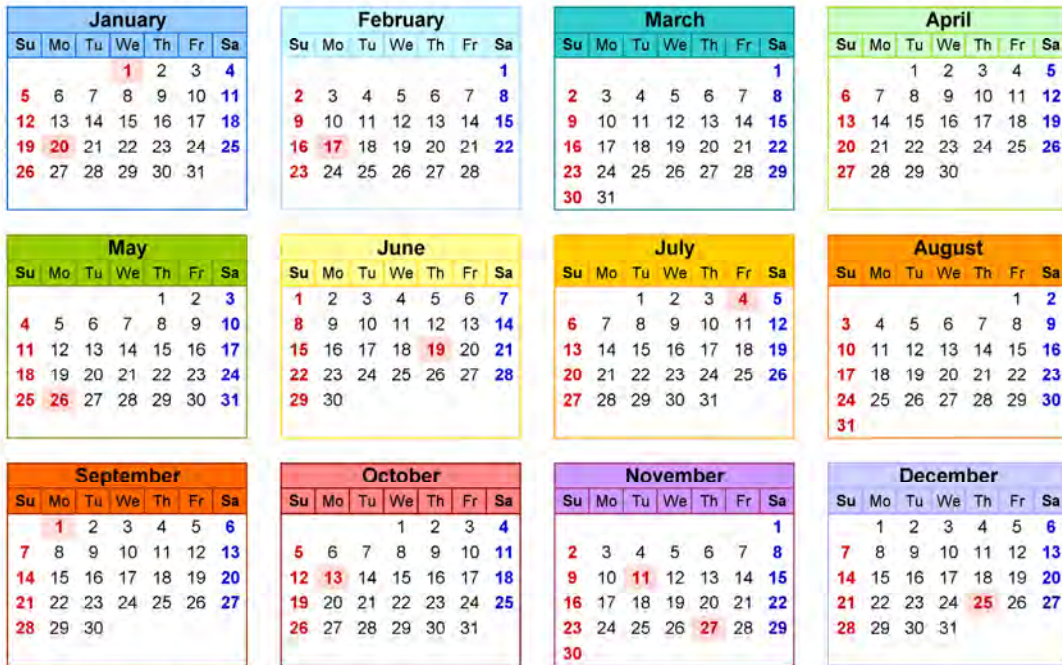
August 19 September 16 October 21

November 18 December 16

ISPLS Dates Jan. 15-17 Purdue Road School March 18-19

2025 Calendar

Calendarpedia
Your source for calendars



Federal Holidays 2025

Jan 1	New Year's Day	May 26	Memorial Day	Sep 1	Labor Day	Nov 27	Thanksgiving Day
Jan 20	Martin Luther King Day	Jun 19	Juneteenth	Oct 13	Columbus Day	Dec 25	Christmas Day
Feb 17	Presidents' Day	Jul 4	Independence Day	Nov 11	Veterans Day		

PENDING

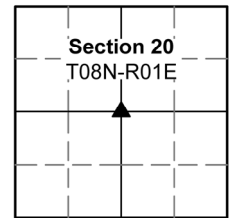
MONUMENT RECORD

Corner ID: **SaCr_G15**

1/4 Corner

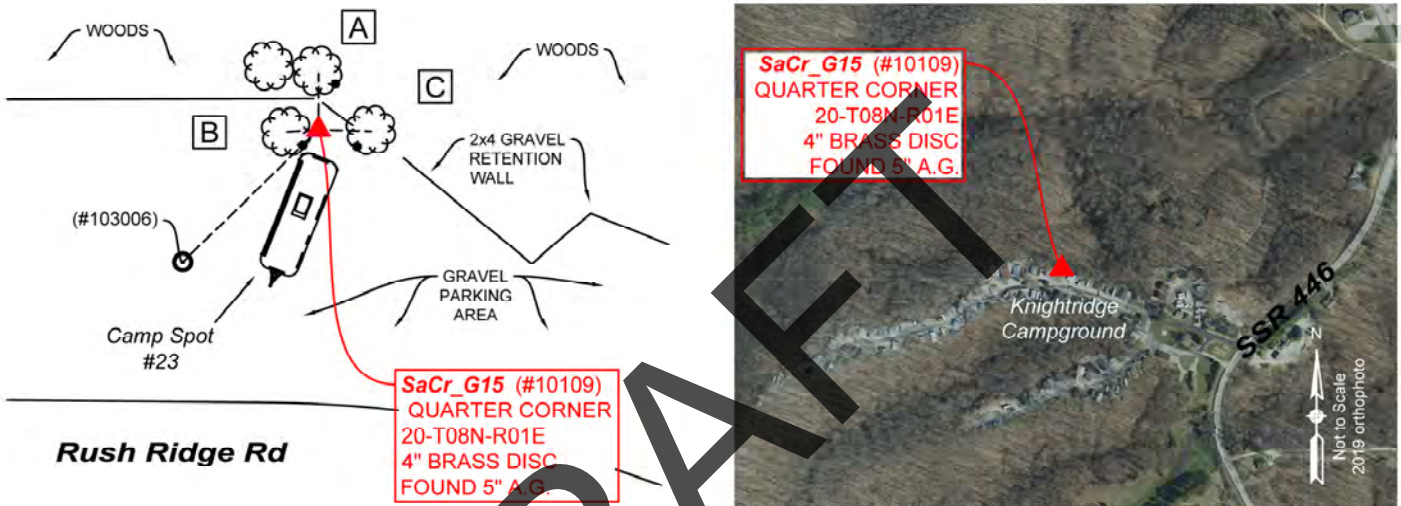
Section 20- T08N-R01E, 2nd P.M.

Salt Creek Township, Monroe County, Indiana



MONUMENT: Describe monument set or found (Include material type, scribing, distance above/below grade, dimensions.)
 4" Brass Disc with "+" on 6" (diameter) cylindrical concrete base 5" above grade at north end of trailer camping spot #23 in Knightridge Campground. Brass Disc reads "DEPARTMENT OF NATURAL RESOURCES BOUNDARY MARKER DIVISION OF FORESTRY C 1/4 S-20 T8N RX1E"

MONUMENT LOCATION SKETCH:



WITNESS MONUMENT TIES

All ties to new Bearing Trees (BTs) are a mag nail set in a 1-1/2" plastic washer stamped "SURVEY MARKER - DO NOT REMOVE" and hack mark at the root crown (less than 12" above ground) perpendicular to the center of the tree, unless otherwise noted. BT diameters are noted as dbh and are measured approximately 4.5' above ground. Bearings are measured from the monument to the center of the BT, distances are measured from the monument to the mag nail.

ID	BEARING	DISTANCE	DESCRIPTION
Witness A	N 0d E	14.8'	"Protect Nearby Survey Marker" sign found 4.2' above grade on the south side of the east trunk of a 19" bifurcated Sugar Maple Tree. Found mag nail with washer reading, "Monroe Co Surveyor" found on southeast corner of tree 0.7' above grade as per Witness 3 from 1986 monument record.
Witness B	S 86d W	8.2'	Magnetic signal found. Set mag nail and washer on the southeast side of 35.8" oblong Sugar Maple Tree 0.4' above grade as per Witness B on 1999 monument record.
Witness C	S 88d E	13.7'	Mag nail and metal washer reading, "Monroe Co Surveyor" found 0.7' above grade on the west side of a 26" Sugar Maple Tree.

MONUMENT ACCESSORIES

Other survey grade monuments that were located in the vicinity and their relation to the monument.

(#103006)	S 45d25'31" W	49.64'	5/8" Rebar with yellow cap reading, "UTT S-0089" found at grade.
-----------	---------------	--------	--



OFFICE OF THE MONROE COUNTY SURVEYOR • Trohn Enright-Randolph

119 W 7th Street, Bloomington, IN 47404 • 812-349-2570 • surveyoroffice@co.monroe.in.us

PENDING

MONUMENT RECORD

Corner ID: **SaCr_G15**

1/4 Corner

Section 20- T08N-R01E, 2nd P.M.

Salt Creek Township, Monroe County, Indiana

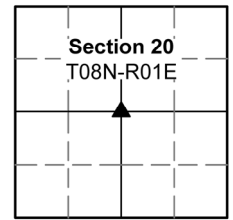


PHOTO IDENTIFIED: Photo Date: 3/22/2023



Photo Orientation & Description: SaCr_G15 from above



Photo Orientation & Description: Looking south at SaCr_G15

ORIGINAL OR SUBSEQUENT SURVEY EVIDENCE FOUND: *Include, search area or areas, search procedure, etc.*
 Date of Field work/Search: 3/13/2023 & 3/22/2023 By: JG & HJ Monument Found: Brass Disc BTs or Reference Objects Found: Found Witness 3 from 1986. Found Witness B from monument record and the fallen remnants of what could have been Witness C from 1999 monument record. The origin of Witness C is unknown. Project #: Salt Creek 2023 Field Book: 55/28 Equipment: The basis of bearings is Grid North System NAD83(2011)/Indiana West NAVD 88, Epoch 2010.0000, geoid12b_conus.db3, US Survey Feet, derived from GPS observations utilizing the Indiana Real-Time Network (INCORS). Coordinate data was collected with a Javad Triumph LS Network Rover. Coordinates are available upon request. Distances to witness ties were collected with a 100' measuring tape. Bearings to witness ties were collected with the internal magnetic compass of the Javad Triumph LS and were automatically adjusted to grid north and are approximately shown hereon for reference. Priority should be given to provided distances over bearings. Notes: All witness photos on file in the Monroe County Surveyors Office.

OTHER EVIDENCE: *Describe corner location relative to nearby features and how to reach the corner location – note fences, roads, timber cutting lines, mow lines, clearings, plantings, streams, topo changes, etc.*
 Monument is at the northern side of Knightridge Campground just south of the northeast extension of Paynetowne State Recreation Area. State forest carsonite signs can be seen north of the monument on the downward slope.

MONUMENT PRESERVATION: *Describe work done to preserve existing monument.*
 New witnesses were established. Ambiguities between the 1986 and 1999 monument records were clarified going forward. Geodetic controls were captured for the monument and Witness (#103006).

THEORY OF LOCATION: *Describe the theory of location for acceptance of this monument. Include monument origin and associated uncertainty.*
 The brass plate was previously witnessed by the Monroe County Surveyor, Kevin Enright, on October 28, 1999, and accepted by the Monroe County Surveyor Review Board on November 18, 1999. The 1999 Monument Record accepted the brass plate per a boundary survey by Stephen L. Smith, Morgan-Monroe Forest (1986), on file at the Surveyor's Office as RSID001096. Mr. Smith set the 30" x 6" pedestal and monument at the time, replacing a 5/8" rebar set by Edmund Farkas in an unknown survey. One other Reference on File: Eric L. Deckard Survey, Wisley – Boundary Survey (2021), on file at the Recorder's Office as 2021022801.IN. Historic research has not yet been performed to prove the validity of this monument.

CERTIFICATION:



MONUMENT RECORD
State of Indiana - County of Monroe

Section: 20

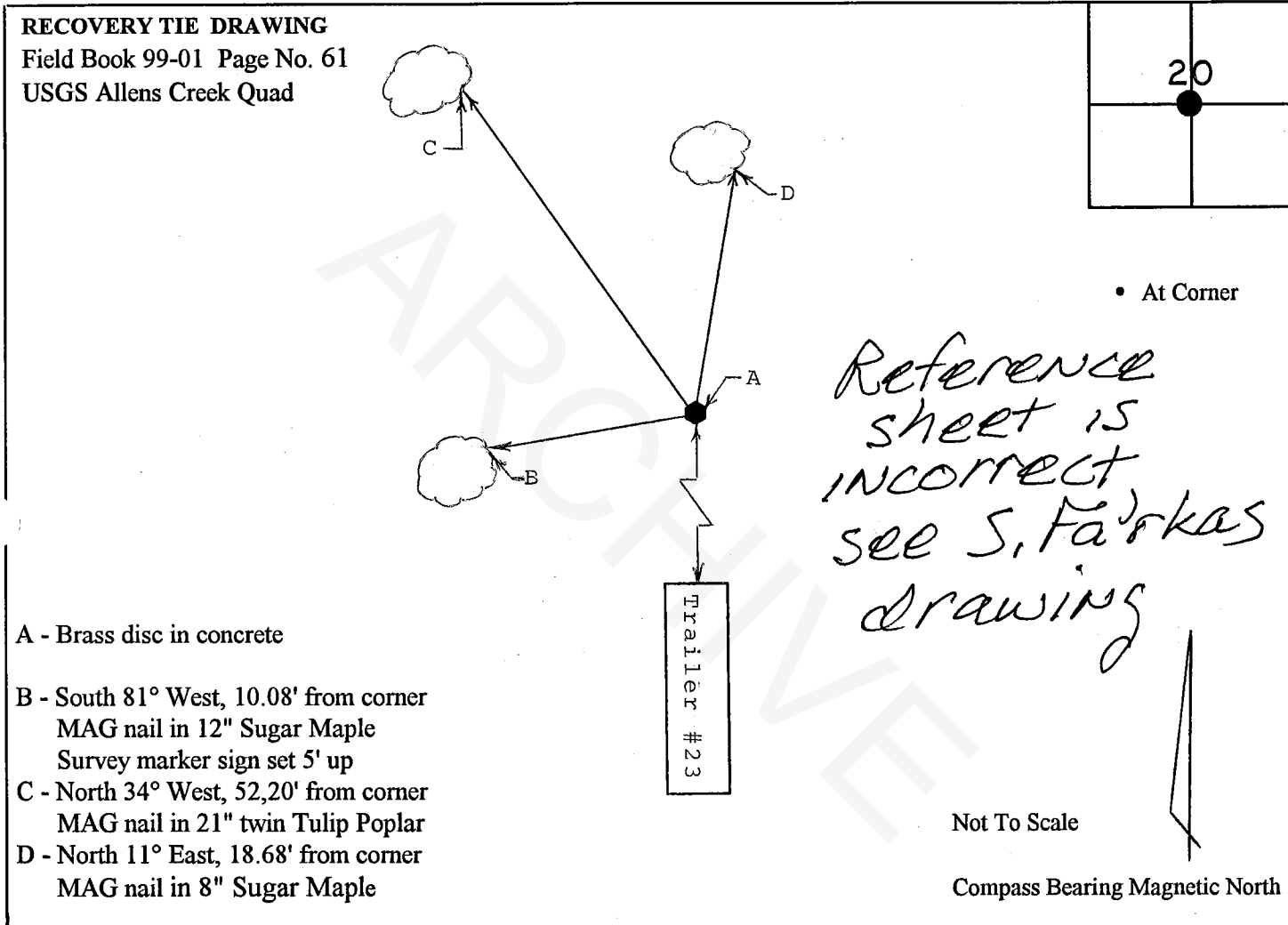
Township: 8 North

Range: 1 East

Corner ID: Sa Cr G-15

Monument Description & Remarks: Found stamped Brass Disc set in concrete at center of section. Disc in concrete measured 0.14' (h) x 0.50' (l) x 0.42' (w) above ground; 1/2" rebar in edge of concrete. Disc reads "Department of Natural Resources, Division of Forestry, Boundary Marker."

References On File: Morgan/Monroe State Forest survey dated February 28, 1986, certified by Steve Smith, R.L.S. No. S0427.



I, Kevin P. Enright, Monroe County Surveyor, hereby certify that this document was prepared under my direction in accordance with the provisions of Section 36-2-2 of the Indiana Code, and the above data is given under my hand and seal this 28th day of October, 1999.

Kevin P. Enright



Administered by the Monroe County Surveyor Review Board

Date: November 18, 1999

CERTIFIED LAND CORNER RESTORATION

State of Indiana)
)SS:
County of Monroe)

I Stephen L. Smith do hereby certify that on the 27 day of February,
1986, I found evidence of the center 1/4 corner of Section 20
Township 8N, Range 1E, Second Principal Meridian,
as described hereon; and that from this evidence I established a new monument and
accessories as described hereon to perpetuate the original location of this corner:

Description of original monument and accessories and subsequent restorations:

Original survey by Henrie in 1815- no monument set.
Subsequent survey in 1864 by Spencer-unknown monument accessories.
Survey by Edmund Farkas----- 5/8" rebar set

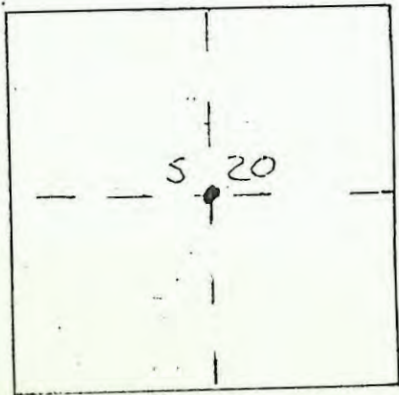
Description of corner evidence found:

5/8" rebar from Farkas survey

CHECK
THIS

Description of monument and accessories I established to perpetuate the original
location of this corner: In February 1986 I set a 6" diameter X 30" long
concrete monument with brass disc in place of the 5/8" rebar.
Corner Accessories Established

- 1) N 70° E 6" Maple 36⁵
- 2) N 45° E 6" Oak 11⁵
- 3) N 0° E 7" Twin Maples 14⁶



Resident witness Bon Blodan

Dated at Bloomington Indiana, this 28 day of
Feb 1986

Signature Stephen L. Smith Title Registered Land Surveyor
(County Surveyor, Registered Land Surveyor, or other duly
authorized official)

Surveyors Registration No. S0427

Office of _____ County _____

I hereby certify that the within instrument was filed in this
office for record on the _____ day of _____ 19____,
and was filed in Book No. _____ Page No. _____
of County Records.

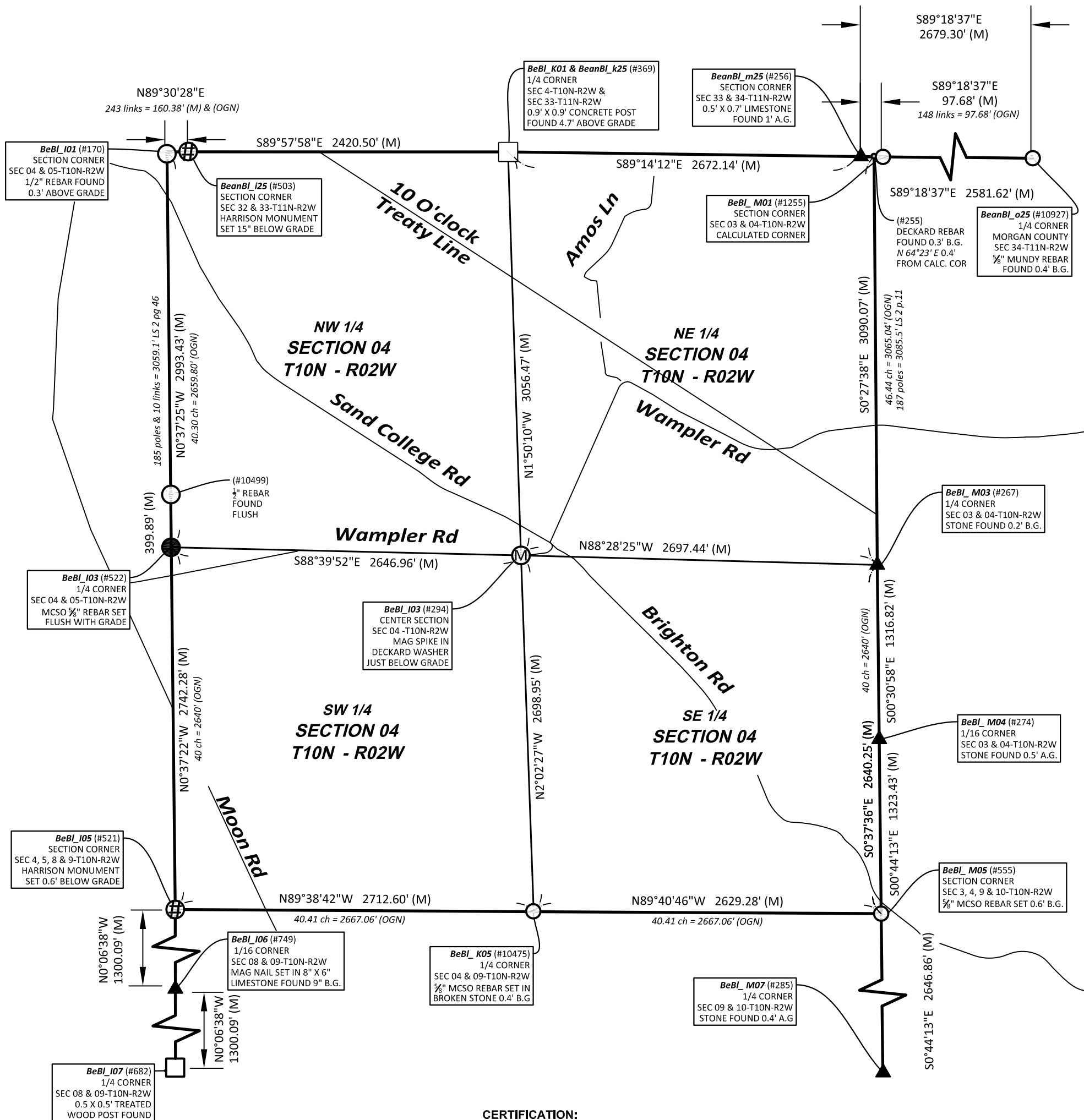
Signature _____ Title _____

Township 8N, Range 1E, Section 20, Index No. _____, Page No. _____

PLAT OF SECTION CORNER PERPETUATION SURVEY

SECTION 4 - T10N - R02W

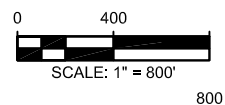
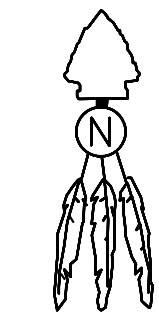
Bean Blossom Township * Monroe County, Indiana



CERTIFICATION:

I hereby certify that to the best of my knowledge, ability and belief the within plat and report represent a survey made by me in accordance with Title 865, Article 1, Chapter 12 of the Indiana Administrative Code and completed on December 17, 2024.

Michael E. Sheppard
Professional Surveyor
No. 20100021
State of Indiana
msheppard@co.monroe.in.us



NOTES:

- Field work was performed January-October 2024.
- This document is not complete without the associated report of survey.
- Interior quarter-section corners, sixteenth-section corners and corners of minor subdivisions were not evaluated in any way unless shown hereon or specifically discussed in the report of survey. Bearing breaks may exist between section corners and quarter corners that are not shown. Bearings and distances are shown hereon to correlate corners and to assist in corner analysis.

- Basis of Bearings: Unless noted otherwise, the basis of bearings is Grid North NAD83(2011), Indiana West Zone, Epoch 2010.0000, Geoid Model G2012BU7, Datum NAD83_NO_TRANS, US Survey Feet, derived from GPS observations utilizing the Indiana Real-Time Network (INCORS). Coordinate data was collected with a Javad Triumph LS Network Rover and/or with a Sokkia Set 510 Total Station radially from points located with GPS. Distances obtained with GPS have not been adjusted to ground. To adjust grid distances to ground distances multiply them by a scale factor of 1) 1.00041208.

LEGEND:

(M)	Measured Distance	B.G.	Below grade
(R-1884)	Record Distance	⊕	Harrison Monument
(OGN)	Original Government Notes	○	Iron Monument Found
(C)	Calculated Distance	●	Iron Monument Set
(CR)	Calculated from Record	⊙	Iron Pipe Found
RICH_U17	Corner Reference ID	⊖	Mag Nail / Mag Spike
(#283)	Survey Point Number	□	Post Found
A.G.	Above grade	▲	Stone Found
		—	Line not to scale

SHEET 1 OF 3
Project: 2024-001
Field work by: MES, WEP & JMG
Drawn by: JMG
Reviewed by: MES, TER & SRB



OFFICE OF THE MONROE COUNTY SURVEYOR
Trohn Enright-Randolph Monroe County Surveyor
501 North Morton Street, Bloomington, IN 47404 (812) 349-2570

I affirm, under the penalties of perjury, that I have taken reasonable care to redact each Social Security Number in this document, unless required by law.

Michael E. Sheppard

REPORT OF SURVEY:

In accordance with Title 865, Article 1, Chapter 12 of the Indiana Administrative Code, the following observations and opinions are submitted regarding the various uncertainties in the locations of the corners established by this survey as a result of availability and condition of reference monuments, occupation or possession lines, and clarity or ambiguity of the record descriptions and plats. There may be unwritten rights associated with these uncertainties. Any uncertainty associated with the corners shown hereon is inherently passed to any parcel corner dependent on its position. The Relative Positional Accuracy in the location of points shown on this survey is within that allowable for a rural survey (0.26 feet + 200 ppm) as defined by Title 865, Rule 12 of the Indiana Administrative Code.

The purpose of this survey is to perpetuate the section/half section corners in Section 4-T10N-R02W, 2nd Principal Meridian, Bean Blossom Township, Monroe County, Indiana. Interior quarter-section corners, sixteenth-section corners, and corners of minor subdivisions were not evaluated in any way unless specifically discussed herein. The relationship of the section/half section corners to the adjoining parcel boundary lines was not addressed. Occupation lines in the immediate vicinity of the monuments found or set are shown on the associated Monument Records on file in the Office of the Monroe County Surveyor.

Reference survey records were obtained from the Monroe County Surveyor, Monroe County Recorder, Monroe County Auditor, Monroe County Planning, Monroe County Highway Department, and the U.S. Army Corps of Engineers. Surveys consulted are included in the history section pertaining to each monument. Reference Survey ID numbers refer to the Monroe County Surveyor’s Reference Survey Database and Instrument numbers refer to the Monroe County Recorder’s Database.

MONUMENTS FOUND OR SET:

Monuments and corners evaluated in the process of this survey, the theory of location used to accept or establish these monuments and corners, and the surveyor’s opinion of the uncertainties associated with these monuments and corners are as follows:

BeBl_I01, Northwest corner Section 4 Township 10 North Range 2 West, (#170) ½” diameter rebar found 0.3’ above ground, in an old north-south fence line, 1.3’ east of the east base of a 28” black walnut tree. The first survey of modern origin, I uncovered that showed a rebar (or any monument for that matter after the original wood post at BeBl_I01), is a survey by Edmund O. Farkas dated November 21, 1979, found in the Monroe County Surveyors Office data base as RSID004160. It is not clear from a review of said survey if he set or found the rebar in 1979. I personally visited the site and found the ½” diameter rebar on 5-24-2004, while doing a Section corner reestablishment survey for the Owen County surveyors office. At that time, I noted the rebar to be at the North edge of the evident cut of an old, abandoned, east west roadbed (not as visible today as 20 years ago). On my 2004 visit to the site, I noted that the adjoining landowner, appx. 65-year-old Patricia Powell walked us to an area she said her father had always told her the Sections cornered, which was approximately 20.5’ South of the rebar. The vicinity she showed us was in the approximate South edge of the apparent cut of the old, abandoned roadway and I observed a 1.1’ by 1.3’ by 0.3’ thick stone lying flat, 0.3’ below ground, in a north-south fence line. It appears this is the stone cited in a survey by Jess A Gwinn, PLS, as found disturbed and reset. The stone was then referenced by Kevin P. Enright, Monroe County Surveyor, on March 14, 2006, and entered into Monroe County Surveyors Office corner records. I revisited the sight in 2006, while doing a survey dated June 7, 2006, recorded in instrument #2006013767. My helper at the time, (Carl Wigal) who had extensive background in building houses, said it looked like a “foundation stone” to him. I observed groves on the stone supporting his idea that it had at 1 time possibly had steel in and or against it and questioned its validity as an 1800’s survey corner stone. In 2014, a survey was conducted by BRG surveying, under the direction of Rachel Oser PLS and in said survey, dated August 8, 2014, and recorded in instrument #2016011069, Mrs. Oser noted that the rebar matched deeds and occupation lines in the area, and accepted the rebar over the stone. The rebar is, in my opinion the most reliable evidence of the corners original location with 2’ of uncertainty east-west and 15’ of uncertainty north-south. More detailed information about this corner, including the corners known history, location relative to occupation lines, reference ties, State Plane coordinates, photos etc. is available on a Monument Record card in the Monroe County Surveyors Office and on their online Monroe County Surveyor utility site.

BeBl_K01, North quarter corner Section 4 Township 10 North Range 2 West (#369) 0.9’ X 0.9’ Concrete Post, standing 4.7’ above ground, at ancient north-south and east fence corner. Post was found at long standing historically accepted occupation corner. Though there should have been offset corners in this vicinity, in my 2006 survey for Eden (RSID005434) I determined fencing going South from this post was in general alignment with it all the way to the Center of Section 4, thus making the post not only the most reliable evidence of the original location of the South ¼ corner of Section 33, Township 11 North Range 2 West with in my opinion negligible uncertainty, but also the historically used and accepted location and originally established location (not established in the original survey) of the North ¼ corner of Section 4, Township 10 North Range 2 West. This was also discussed in the Survey by Rachel Oser in RSID005433.

BeBl_M01 Northeast corner Section 4 Township 10 North Range 2 West (#1255, BeBl_M01) is the calculated location of the Northeast corner of Section 4, Northwest corner of Section 3-Township 10 North Range 2 West, calculated on line between a stone found at the Southwest corner Section 34 Township 11 North Range 2 West (#256 BeanBl_m25) and a Mundy PLS capped rebar found at the South quarter corner of said Section (#10927), and at record distance of 148 Links (97.68’) from said BeanBl_m25. A Deckard PLS capped rebar (#255) was found North 64° 23’ East 0.4’ from the calculated corner. As such, no additional corner monument was set.

BeBl_M03 East quarter corner Section 4 Township 10 North Range 2 West (#267) 1.2’ north-south by 1.0’ east-west limestone found 0.2’ above ground, with a cross on top (ground this survey) 1’ east and 0.7’ south of an old, rotten and falling wood corner post at old north-south

and west fence corner. The stone has a Mundy PLS capped rebar against its northwest corner. Relative to its history and location relative to occupation lines and other monuments located in the area, the stone is in my opinion the most reliable evidence of the original location of the east quarter of Section 4/west quarter corner of Section 3, with negligible uncertainty.

BeBl_M04 Southeast corner Northeast quarter Southeast quarter AKA Northeast corner Southeast quarter Southeast quarter Section 4 Township 10 North Range 2 West (#274) 0.4’ north-south by 0.9’ east-west Limestone found between roots of and against the South edge of a 24” diameter Pignut Hickory tree at an old north-south and east fence intersection. The stone is believed to be the monument set by M.H. Buskirk Monroe County Surveyor on June 16, 1881, in Legal Survey Book 2, page 338 & 339, which survey appears to be the original establishment of the Sixteenth Section division corner. The only uncertainty this stone has in my opinion is it being ±2.5’ West of a straight line between the stone at BeBl_M03 and the rebar set at BeBl_M05. This is an uncertainty since Bureau of Land management rules state; “The corners set by the Surveyor General are unchangeable”. The lines marked by the Surveyor General are unchangeable” and “That the boundaries and subdivision of the public lands as surveyed under approved instructions by the duly appointed surveyors, the physical evidence of which survey consists of monuments established upon the ground, and the record evidence of which consists of field notes and plats duly approved by the authorities constituted by law, are unchangeable after the passing of title by the United States.” Therefore, placing an angle break in a Section line may be construed as changing it.

BeBl_M05 Southeast corner Section 4 Township 10 North Range 2 West (#555) 5/8” rebar (24” long) with 2” diameter aluminum cap inscribed MONROE COUNTY SURVEYORS OFFICE SHEPPARD PLS #20100021, set with top 0.6’ below ground, in a mowed area that was formerly a garden. The rebar was set online and proportionally between the nearest stones North and South of it, reduplicating the way Jess Gwinn reestablished it in a survey by him dated 09/28/2003, recorded in instrument #2003030618 in the Monroe County Recorder’s Office, RSID004161 in the Monroe County Surveyors Office. In said survey, Mr. Gwinn’s report states:


There are no perpetuation records for this corner. The position for this corner was calculated as a single proportional measurement between corners A and C as no monuments could be found on the section line within a mile to the east. The calculated corner position is inside the Wampler vegetable garden so no monument was set.

Mr. Gwinn’s corner A on said survey is the stone at #274 (BeBl_M04) and his stone B, is the stone at #285 (BeBl_M07). The location reestablished per Mr. Gwinn’s methodology was then accepted by at least 3 other surveyors consisting of James C Bennett, in a survey recorded in instrument #2009015969, in the Monroe County Recorder’s Office, (RSID004212 in the Monroe County Surveyors Office), Eric Lee Deckard in a survey recorded in instrument #2020020042 in the Monroe County Recorder’s Office, (RSID004185 in the Monroe County Surveyors Office), and myself (Michael E Sheppard) in a survey recorded in instrument #2010003806 in the Monroe County Recorder’s Office (RSID004124 in the Monroe County Surveyors Office). Though this is not typically how I would reestablish a lost or obliterated Section corner, and I have pondered and questioned using the stone at said BeBl_M04 for proportionate measurement to reestablish the Section corner since it is not noted in its original establishment in legal survey book 2 pages 338 and 339 as having been set proportionally between the Section and quarter Section corner, but rather 80 poles (1320’) South of BeBl_M03, I do see Mr. Gwinn’s logic and with there being no other established Section corners to the East for 2 miles, (prior to my survey in said instrument #2010003806), my end conclusion is I have no better idea as to where the original location of this corner was. This location is in my opinion the most reliable evidence of the originally established location of the corner with an uncertainty of 3.5’ north-south (since it is ±1.6’ North of the extension of a line from the Harrison monument set at the Southwest corner of Section 4 (#521 BeBl_I05) through the broken stone found at the South quarter corner of said Section 9, (#10475 BeBl_K05) and ±3.3’ North and 2.6 west of where proportionate measurement between the nearest quarter corners at BeBl_M03 and M07 would place it and 3’ east-west, since it is ±2.5’ West of a straight line between the stones found at the East Quarter corner of Section 4 and the East Quarter corner of Section 9. It is noteworthy that the distances measured this survey between the stones at BeBl_M04 and BeBl_M07, differ from the measurements in Mr. Gwinn’s survey by ±1.6’, which is likely primarily due to us finding the stones at said BeBl_M04 and BeBl_M07 leaning and straightening them up before locating them.

BeBl_K05 South quarter corner Section 4 Township 10 North Range 2 West (#10475) 5/8” rebar (24” long) with 2” diameter aluminum cap inscribed MONROE COUNTY SURVEYORS OFFICE SHEPPARD PLS #20100021, set 0.4’ below ground, in the hole formed from a found and removed, bent, 5/8” rebar found 0.4’ above ground. The bent found removed rebar was between 2 limestones, loosely imbedded in the ground. The North stone being a 1.2’ long by 0.5’ wide by 0.3’ thick limestone and the South stone being s 0.8’ long by 0.5’ wide by 0.3’ thick limestone, 1’ west of a Sycamore land trust sign. It appears these stones are segments of 1 broken stone, lying relatively flat on the ground. The found and removed, bent rebar appears to be the rebar set by Jess Gwinn in survey by him recorded in instrument #2003030618 in the Monroe County Recorder’s Office, RSID004161 in the Monroe County Surveyors Office, described as a 5/8” rebar set in the center of stone remnants. The rebar was set by Jess Gwinn, in survey by him recorded in instrument #2003030618 in the Monroe County Recorder’s Office, RSID004161 in the Monroe County Surveyors Office. Mr. Gwinn’s report cites:

A 5/8” rebar with plastic ID cap was set flush at the southwest corner of the northeast quarter of Section 4. The rebar was set in the broken halves of a 4” x 6” stone found at this corner per survey 7. None of the accessories to the stone were found. The stone/rebar is 15 feet southwest of the centerline of the overhead electric transmission lines.

I agree that this likely is the stone set in Legal Survey Book 2, Page 547 (survey 7 in Mr. Gwinn’s references). However, with the stone being broken and shallowly imbedded, it may not be in its original location, though based on other monuments and occupation lines in and

SHEET 2 OF 3	CORNER PERPETUATION SURVEY SECTION 4 – T10N - R02W Bean Blossom Township Monroe County, Indiana	Project: 2024-001 Field work by: Michael E. Sheppard, William E. Phillips & Jason M. George Drawn by: JMG Reviewed by: MES, TER & SRB		OFFICE OF THE MONROE COUNTY SURVEYOR Trohn Enright-Randolph <i>Monroe County Surveyor</i> 501 N Morton Street Ste. 205, Bloomington, IN 47404 surveyoroffice@co.monroe.in.us
-----------------------	---	---	---	---

around the Section, I see no more reliable evidence as to the original location of the corner. Though there is in my opinion an uncertainty of as much as 5' in its location, due to its disturbed condition.

BeBl_I05 Southwest corner Section 4 Township 10 North Range 2 West (#521) Harrison monument, inscribed SECTION CORNER, set with top left 0.6' below ground in a crop field. The Harrison monument was set at the extension of and double the distance of a line beginning at the treated wood post found marking the East quarter corner Section 8/West quarter corner Section 9 (#682 BeBl_I07) through the stone found at #749 (BeBl_I06), since Legal Survey Book 2, Page 473 notes a Stone at this Section corner (BeBl_I05) and that the stone at BeBl_I06 was "set at 1/2 distance between NW corner and W 1/2 m post" (referring to Section 9). Thus, reestablishing the corner in this method follows in the footsteps of Monroe County Surveyor M. H. Buskirk's 1889 survey, as near as possible.

BeBl_I03 West quarter corner Section 4 Township 10 North Range 2 West (#522) 5/8" rebar (24" long) with 2" diameter aluminum cap inscribed MONROE COUNTY SURVEYORS OFFICE SHEPPARD PLS #20100021, set, with top flush with ground, near the South edge of a cluster of trees inside a crop field. The rebar was set at the extension of a line beginning at the 1/2" rebar at the Northeast corner of Section 5/Northwest corner of Section 4, Township 10 North Range 2 West (#170-BeBl_I01) through a 1/2" rebar found (#10499), at an old east-west and north fence corner and at record distance per the description of a parcel of land described in Deed Record Book 374, page 247 (instrument #006409) in the Monroe County Recorder's Office, of 399.89' from said 1/2" rebar. Said 1/2" rebar is called out as being on the Section line in the record description of a parcel of land described in instrument #218255 and a survey by Jess Gwinn PLS recorded in instrument #2005006391 (RSID004152 in the Monroe County Surveyors Office). We also found a Potter PLS capped rebar at the base of a wood corner post at East and South fence corner, S85° 06' 53"W 17.06', from the 1/2" rebar accepted as being on the Section line. I called Mr. Potter about this rebar, and he said he vaguely remembered doing a survey in the area about 25 years ago and that he would look for the survey, but I never heard back from him. It would appear this second rebar is the one called for in the record description in Deed Record Book 405, page 151 (instrument #218255) as being 16.46' from the rebar at #10499, which rebar at #10499, is cited in said document, as being on the Section line. We scanned and probed a large area in search of any kind of monument in the vicinity of BeBl_I03 but found nothing. The record description of a 5.43-acre parcel described in instrument #2014005485 calls for a stone on the Section line, 63' North of the half mile post. We probed this area too and did observe a stone with possible survey characteristics lying on the ground ±66' North and 10' East of the rebar set. Additionally, it is noteworthy that the rebar set is ±66' South of a fence that runs at a ±N69°14' Bearing. Said instrument #2014005485 cites this parcel line as "Southwesterly". In my opinion the rebar set this survey bears an uncertainty of 4' north-south and 4' east-west of being at the originally established location of the Quarter Section corner.

BeBl_K03 Center of Section 4 Township 10 North Range 2 West Mag Spike & Washer stamped "Deckard" found just below grade near centerline of Wampler Road. The Mag Spike and Washer were set by Eric L. Deckard PLS, while in course of performing Chambers Sliding Scale Subdivision Final Plat (2023) on file at the Recorder's Office as 2023002861.IN. Mr. Deckard states, "Raymond Graham witnessed a PK Nail marking this corner in 1997," citing a survey recorded with a Warranty Deed on file at the Recorder's Office as 721767.IN Mr. Deckard continues, "Two (2) rebar set in that survey were found and used to perpetuate the position of this corner. The position was found to fall in the approximate intersection of the centerline of W. Wampler Road and the extension of a south bound fence line south of the road. The procedures set forth by the Bureau of land management for establishing the center of a Section of land is to establish it at the intersection of lines adjoining opposite Quarter corners. This spike is ±5.1' West of a straight line between the concrete post (#369 BeBl_K01) at the North Quarter of the Section and the rebar between broken stone pieces (#10475 BeBl_K05) at the South Quarter of the Section and ±4.5' North of a straight line between the stone found (#267 BeBl_M03) at the East Quarter corner of the Section and the rebar set (#522 BeBl_I03) at the West Quarter corner of the Section and since the stone monument set in the original establishment of the center of the Section in Legal Survey Book 2, page 547, was not found, has, in my opinion an uncertainty of that magnitude.

SHEET

2
OF
3

CORNER PERPETUATION SURVEY

SECTION 4 – T10N - R02W

Bean Blossom Township Monroe County, Indiana

Project: 2024-001

Field work by: Michael E. Sheppard, William E. Phillips

& Jason M. George Drawn by: JMG

Reviewed by: MES, TER & SRB



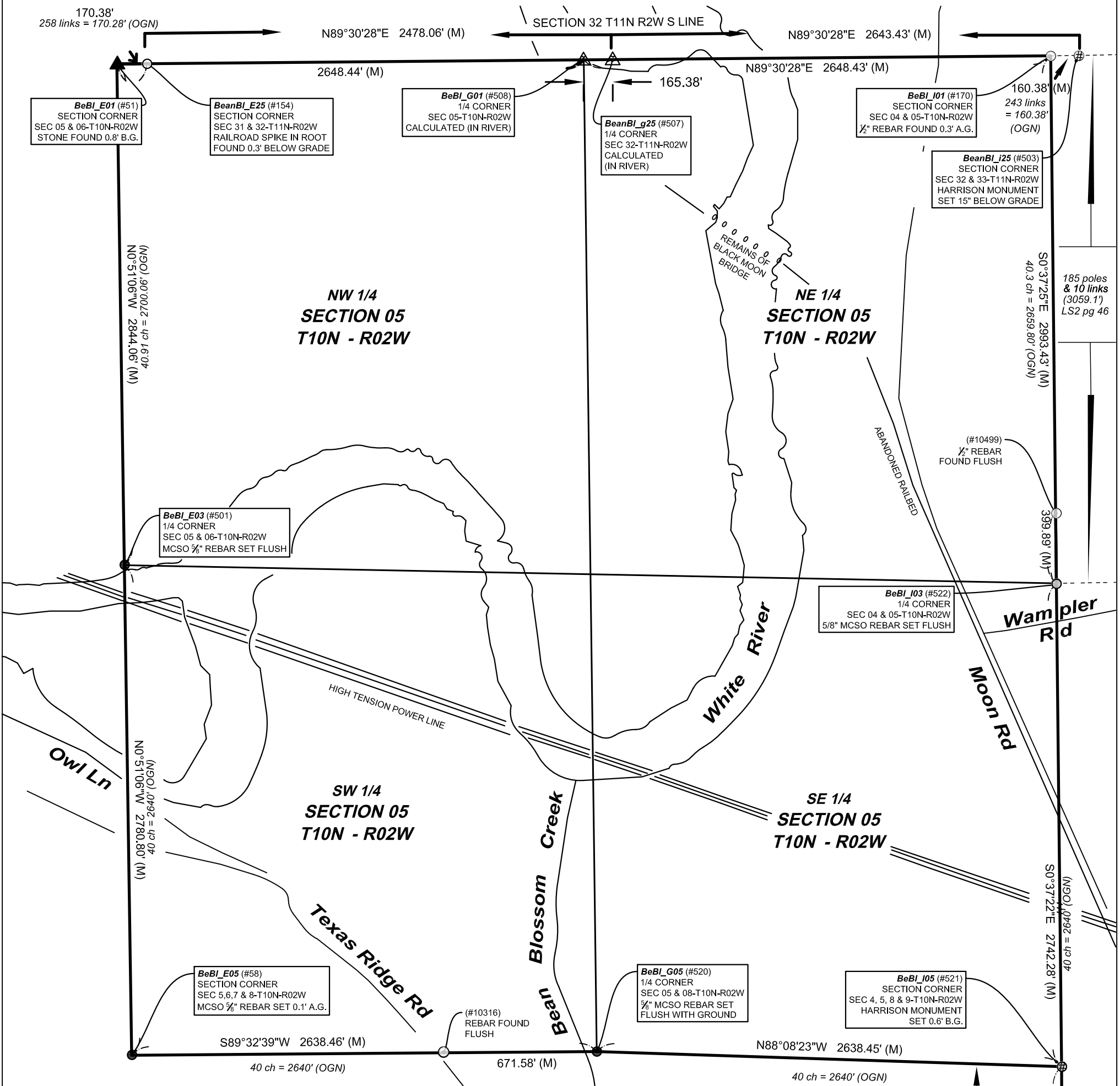
OFFICE OF THE MONROE COUNTY SURVEYOR

Trohn Enright-Randolph *Monroe County Surveyor*

501 N Morton Street Ste. 205, Bloomington, IN 47404 surveyoroffice@co.monroe.in.us

PLAT OF SECTION CORNER PERPETUATION SURVEY SECTION 5 TOWNSHIP 10 NORTH RANGE 2 WEST

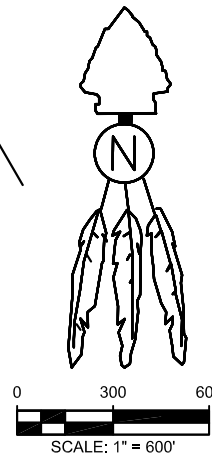
Bean Blossom Township
Monroe County, Indiana



CERTIFICATION:

I hereby certify that to the best of my knowledge, ability and belief the within plat and report represent a survey made by me in accordance with Title 865, Article 1, Chapter 12 of the Indiana Administrative Code and completed on December 17, 2024.

Michael E. Sheppard
Professional Surveyor
No. 20100021
State of Indiana
mshppard@co.monroe.in.us



NOTES:

- Field work was performed in January thru October 2024.
- This document is not complete without the associated report of survey.
- Interior quarter-section corners, sixteenth-section corners and corners of minor subdivisions were not evaluated in any way unless shown hereon or specifically discussed in the report of survey. Bearing breaks may exist between section corners and quarter corners that are not shown. Bearings and distances are shown hereon to correlate corners and to assist in corner analysis.

- Basis of Bearings: Unless noted otherwise, the basis of bearings is Grid North NAD83(2011), Indiana West Zone, Epoch 2010.0000, Geoid Model G2012BU7, Datum NAD83_NO_TRANS, US Survey Feet, derived from GPS observations utilizing the Indiana Real-Time Network (INCORS). Coordinate data was collected with a Javad Triumph LS Network Rover and/or with a Sokkia Set 510 Total Station radially from points located with GPS. Distances obtained with GPS have not been adjusted to ground. To adjust grid distances to ground distances multiply them by a scale factor of 1) 1.00041208.

LEGEND:

- | | | | |
|-----------------|---------------------------|------|----------------------|
| (M) | Measured Distance | B.G. | Below grade |
| (R-1884) | Record Distance | ⊕ | Harrison Monument |
| (OGN) | Original Government Notes | ○ | Iron Monument Found |
| (C) | Calculated Distance | ● | Iron Monument Set |
| (CR) | Calculated from Record | ⊙ | Iron Pipe Found |
| RICH_U17 | Corner Reference ID | ⊗ | Mag Nail / Mag Spike |
| (#283) | Survey Point Number | ⊠ | Post Found |
| A.G. | Above grade | ▲ | Stone Found |
| | | — | Line not to scale |

SHEET 1 OF 3
Project: 2024-001
Field work by: MES, JMG, WEP
Drawn by: JMG
Reviewed by: MES, TER & SRB

Trohn Enright-Randolph
Monroe County Surveyor
205 N Morton St Ste. 205 Bloomington, IN 47404
(812) 349-2570



I affirm, under the penalties for perjury, that I have taken reasonable care to redact each Social Security Number in this document, unless required by law.

Michael E. Sheppard

REPORT OF SURVEY:

In accordance with Title 865, Article 1, Chapter 12 of the Indiana Administrative Code, the following observations and opinions are submitted regarding the various uncertainties in the locations of the corners established by this survey as a result of availability and condition of reference monuments, occupation or possession lines, and clarity or ambiguity of the record descriptions and plats. There may be unwritten rights associated with these uncertainties. Any uncertainty associated with the corners shown hereon is inherently passed to any parcel corner dependent on its position. The Relative Positional Accuracy in the location of points shown on this survey is within that allowable for a rural survey (0.26 feet + 200 ppm) as defined by Title 865, Rule 12 of the Indiana Administrative Code.

The purpose of this survey is to perpetuate the section/half section corners in Section 5-T10N-R02W, 2nd Principal Meridian, Bean Blossom Township, Monroe County, Indiana. Interior quarter-section corners, sixteenth-section corners, and corners of minor subdivisions were not evaluated in any way unless specifically discussed herein. The relationship of the section/half section corners to the adjoining parcel boundary lines was not addressed. Occupation lines in the immediate vicinity of the monuments found or set are shown on the associated Monument Records on file in the Office of the Monroe County Surveyor.

Reference survey records were obtained from the Monroe County Surveyor, Monroe County Recorder, Monroe County Auditor, Monroe County Planning, Monroe County Highway Department, and the U.S. Army Corps of Engineers. Surveys consulted are included in the history section pertaining to each monument. Reference Survey ID numbers refer to the Monroe County Surveyor’s Reference Survey Database and Instrument numbers refer to the Monroe County Recorder’s Database, unless noted otherwise.

MONUMENTS FOUND OR SET:

Monuments and corners discovered, analyzed, evaluated and used in the process of this survey, the theory of location used to accept or establish these monuments and corners, and this surveyor’s opinion of the uncertainties associated with these monuments and corners are as follows:

BeBl_E01, Northwest corner section 5 Township 10 North Range 2 West, (#51) 1’ north-south by 0.2’ east-west limestone found with top 0.8’ below ground, in a mowed yard. Stone had a groove across its top that we ground into a cross, which is 0.3’ east of a 5/8” rebar found angling across the stones southwest side. Stone is at the east edge of the drip line of a large pine tree. The stone has been used by myself in prior surveys and by others, based on the stone’s location relative to other old monuments and occupation lines in the area, it is, in my opinion, the most reliable evidence of the originally established location of the Northeast corner of Section 6/Northwest corner Section 5, with negligible uncertainty. More detailed information about this corner, including the corners known history, location relative to occupation lines, reference ties, State Plane coordinates, photos etc. is available on a Monument Record card in the Monroe County Surveyors Office and on their online Monroe County Surveyor utility site.

BeBl_G01, North quarter corner Section 5 Township 10 North Range 2 West, (#508) Both BeanBl_G01 (North Quarter Corner Section 5 Township 10 North Range 2 West) and BeanBl_g25 (#507) (South Quarter Corner Section 32 Township 11 North Range 2 West) are calculated corners (165.38’ apart) that fall in White River. We set a Harrison monument (#466) on the Township line 57.0’ from BeBl_G01, 20’ West of the top of bank of the river and a 5/8” diameter rebar (24” long), with 2” diameter aluminum cap inscribed MONROE COUNTY SURVEYORS OFFICE SHEPPARD PLS#20100021, flush with ground, in the approximate center of an abandoned railroad bed, on the Township line, 250.0’ from BeBl_G01. The corners were determined as a lost Section corners. A lost Section corner is defined as a corner whose original position cannot be determined by substantial evidence, either from traces of the original mark or from acceptable evidence or reliable testimony that bears upon the original position, and whose location can be restored only by reference to one or more interdependent corners. The South Quarter corner of Section 32 Township 11 North Range 2 West (#507 BeanBl_g25) was calculated online between a railroad spike in a root at the Southwest corner of said Section 32 (#154 BeanBl_e25) and a Harrison monument at the Southeast corner of said Section 32 (#503 BeanBl_i25) and at an equidistant slit of the length of said line. The North Quarter corner of Section 5 Township 10 North Range 2 West (#508 BeBl_G01) was calculated online between a railroad spike in a root at the Southwest corner of Section 32 township 11 North Range 2 West (#154 BeanBl_e25) and a Harrison monument at the Southeast corner of said Section 32 (#503 BeanBl_i25) and at an equidistant slit of the length of the line between a stone at the Northwest corner of said Section 5 (#51 BeBl_E01) and a ½” rebar at the Northeast corner of said Section 5 (#170 BeBl_I01). More detailed information about this corner, including the corners known history, location relative to occupation lines, reference ties, State Plane coordinates, photos etc. is available on a Monument Record card in the Monroe County Surveyors Office and on their online Monroe County Surveyor utility site.

BeBl_I01, Northeast corner Section 5 Township 10 North Range 2 West, (#170) ½” diameter rebar found 0.3’ above ground, in an old north-south fence line, 1.3’ east of the east base of a 28” black walnut tree. The first survey of modern origin, I uncovered that showed a rebar (or any monument for that matter after the original wood post at BeBl_I01), is a survey by Edmund O. Farkas dated November 21, 1979, found in the Monroe County Surveyors Office data base as RSID004160. It is not clear from a review of said survey if he set or found the rebar in 1979. I personally visited the site and found the ½” diameter rebar on 5-24-2004, while doing a Section corner reestablishment survey for the Owen County surveyors office. At that time, I noted the rebar to be at the North edge of the evident cut of an old, abandoned, east west roadbed (not as visible today as 20 years ago). On my 2004 visit to the site, I noted that the adjoining landowner, appx. 65-year-old Patricia Powell walked us to an area she said her father had always told her the Sections cornered, which was approximately 20.5’ South of the rebar. The vicinity she showed us was in the approximate South edge of the apparent cut of the old, abandoned roadway and I observed a


1.1’ by 1.3’ by 0.3’ thick stone lying flat, 0.3’ below ground, in a north-south fence line. It appears this is the stone cited in a survey by Jess A Gwinn, PLS, as found disturbed and reset. The stone was then referenced by Kevin P. Enright, Monroe County Surveyor, on March 14, 2006, and entered into Monroe County Surveyors Office corner records. I revisited the sight in 2006, while doing a survey dated June 7, 2006, recorded in instrument #2006013767. My helper at the time, (Carl Wigal) who had extensive background in building houses, said it looked like a “foundation stone” to him. I observed grooves on the stone supporting his idea that it had at 1 time possibly had steel in and or against it and questioned its validity as an 1800’s survey corner stone. In 2014, a survey was conducted by BRG surveying, under the direction of Rachel Oser PLS and in said survey, dated August 8, 2014, and recorded in instrument #2016011069, Mrs. Oser noted that the rebar matched deeds and occupation lines in the area, and accepted the rebar over the stone. The rebar is, in my opinion the most reliable evidence of the corners original location with 2’ of uncertainty east-west and 15’ of uncertainty north-south. More detailed information about this corner, including the corners known history, location relative to occupation lines, reference ties, State Plane coordinates, photos etc. is available on a Monument Record card in the Monroe County Surveyors Office and on their online Monroe County Surveyor utility site.

BeBl_I03, East quarter corner Section 5 Township 10 North Range 2 West, (#522) 5/8” rebar (24” long) with 2” diameter aluminum cap inscribed MONROE COUNTY SURVEYORS OFFICE SHEPPARD PLS #20100021, set, with top flush with ground, near the South edge of a cluster of trees inside a crop field. The rebar was set at the extension of a line beginning at the ½” rebar at the Northeast corner of Section 5/Northwest corner of Section 4, Township 10 North Range 2 West (#170-BeBl_I01) through a ½” rebar found (#10499), at an old east-west and north fence corner and at record distance per the description of a parcel of land described in Deed Record Book 374, page 247 (instrument #006409) in the Monroe County Recorder’s Office, of 399.89’ from said ½” rebar. Said ½” rebar is called out as being on the Section line in the record description of a parcel of land described in instrument #218255 and a survey by Jess Gwinn PLS recorded in instrument #2005006391 (RSID004152 in the Monroe County Surveyors Office). We also found a Potter PLS capped rebar at the base of a wood corner post at East and South fence corner, S85° 06’ 53”W 17.06’, from the ½” rebar accepted as being on the Section line. I called Mr. Potter about this rebar, and he said he vaguely remembered doing a survey in the area about 25 years ago and that he would look for the survey, but I never heard back from him. It would appear this second rebar is the one called for in the record description in Deed Record Book 405, page 151 (instrument #218255) as being 16.46’ from the rebar at #10499, which rebar at #10499, is cited in said document, as being on the Section line. We scanned and probed a large area in search of any kind of monument in the vicinity of BeBl_I03 but found nothing. The record description of a 5.43-acre parcel described in instrument #2014005485 calls for a stone on the Section line, 63’ North of the half mile post. We probed this area too and did observe a stone with possible survey characteristics lying on the ground ±66’ North and 10’ East of the rebar set. Additionally, it is noteworthy that the rebar set is ±66’ South of a fence that runs at a ±N69°14’ Bearing. Said instrument #2014005485 cites this parcel line as “Southwesterly”. In my opinion the rebar set this survey bears an uncertainty of 4’ north-south and 4’ east-west of being at the originally established location of the Quarter Section corner. More detailed information about this corner, including the corners known history, location relative to occupation lines, reference ties, State Plane coordinates, photos etc. is available on a Monument Record card in the Monroe County Surveyors Office and on their online Monroe County Surveyor utility site.

BeBl_I05, Southeast corner Section 5 Township 10 North Range 2 West, (#521) Harrison Monument set with top left 0.6’ below ground, in a crop field. The Harrison monument was set at the extension of and double the distance of a line beginning at the treated wood post found marking the East quarter corner Section 8/West quarter corner Section 9 (#682 BeBl_I07) through the stone found at #749 (BeBl_I06), since Legal Survey Book 2, Page 473 notes a Stone at this Section corner (BeBl_I05) and that the stone at BeBl_I06 was “set at 1/2 distance between NW corner and W ½ m post” (referring to Section 9). Thus, reestablishing the corner in this method follows in the footsteps of Monroe County Surveyor M. H. Buskirk’s 1889 survey, as near as possible. More detailed information about this corner, including the corners known history, location relative to occupation lines, reference ties, State Plane coordinates, photos etc. is available on a Monument Record card in the Monroe County Surveyors Office and on their online Monroe County Surveyor utility site.


BeBl_G05, South quarter corner Section 5 Township 10 North Range 2 West, (Point #520) 5/8” rebar (24” long) with 2” diameter aluminum cap inscribed MONROE COUNTY SURVEYORS OFFICE SHEPPARD PLS #20100021, set, with top flush with ground, 14’ East of the East top of bank of Bean Blossom Creek. The rebar was set on the extension of a line from a rebar set in place of a found and removed nail at an old fence corner at the South west corner of Section 5 (#58 BeBl_E05) through a rebar with metal cap (#10316) found on the East side of Texas Ridge Road, 1771.54’ East of said BeBl_E05, and at an equidistant split (as near as possible) between said BeBl_E05 and a Harrison monument set in a crop field at the Southeast corner of Section 5/Southwest corner of Section 4, (#521 BeBl_I05). I had established and set this corner in a similar method in a prior survey dated June 28, 2019, later revised into a minor subdivision and recorded in instrument #2024004521 (RSID005463), however I was proportioning from said BeBl_E05 to a row of posts near BeBl_K05. In reviewing my prior work, it also appears I had a poor-quality GPS shot on the rebar at #10316. The resultant is I set my rebar N79° 05’ 21”E 13.7’ from where I established the Quarter corner this survey, after having a much larger picture of surrounding Section corner locations than my prior traverse revealed. It is noteworthy that though the exact history or method of establishment of the rebar at #10316 is not known, it is in considerable agreement with the alignment of an occupation line fence that begins on the West side of Texas Ridge road and runs all the way to BeBl_E05 and the rebar was found to have been used by multiple surveyors as a point on the Quarter Section line. More detailed information about this corner, including the corners known history, location relative to occupation lines, reference ties, State Plane coordinates, photos etc. is available on a Monument Record card in the Monroe County Surveyors Office and on their online Monroe County Surveyor utility site.

BeBl_E05, Southwest corner Section 5 Township 10 North Range 2 West, (Point #58) 5/8” rebar (24” long) with 2” diameter aluminum cap set, with top left 0.1’ above ground, in the hole formed from a large nail found and removed. The rebar is in an old north-south fence remnant line, 1.6’ south of the center of a wood corner post at north-south and northwest fence corner. The nail found this survey appears to

SHEET 2 OF 3	CORNER PERPETUATION SURVEY SECTION 5 – T10N - R02W Bean Blossom Township Monroe County, Indiana	Project: 2024-001 Field work by: Michael E. Sheppard, William E. Phillips & Jason M. George Drawn by: JMG Reviewed by: MES, TER & SRB		OFFICE OF THE MONROE COUNTY SURVEYOR Trohn Enright-Randolph <i>Monroe County Surveyor</i> 501 N Morton Street Ste. 205, Bloomington, IN 47404 surveyoroffice@co.monroe.in.us
-------------------------------------	---	---	---	---

be the same nail found by Monroe County Surveyor Kevin Enright on February 5, 1997, per field book #26 (97-01), page 39, in the Monroe County surveyors office. At a visual look of the area, I first thought it odd that the nail was 1.6' south of the fence corner, but in Mr. Enright's 1997 notes, he notes "barn nail in ground at old fence post corner, railroad tie well weathered and rotted off at bottom". As such it appears that there was an older corner post at this location in 1997, that is now gone, at the corner of old north-south and east fences. Mr. Enright also notes an old limestone corner stone found lying on the ground approximately 45' to the south, with a cross on it. He then notes picking the stone up and moving the stone and laying it by the nail. Mr. Enright revisited the location on November 5, 1999, per field book #31 (99-01), page 64, in the Monroe County surveyor's office and made references to the nail, then citing it as a 20-penny nail. He also notes moving the old corner stone lying on the ground and leaning it against a corner post. The stone appears to have been kicked around a couple times since then and was observed laying on the ground to the Northwest. The stone has been called a corner stone and used by at least 2 different surveyors in modern history. I probed around the nail in hopes perhaps there was still a base of the old stone left buried but found nothing. I did observe the ground around the nail was very soft, leading me to hypothesis this is where the old corner post that used to be at the old north-south-east fence intersection was. More detailed information about this corner, including the corners known history, More detailed information about this corner, including the corners known history, location relative to occupation lines, reference ties, State Plane coordinates, photos etc. is available on a Monument Record card in the Monroe County Surveyors Office and on their online Monroe County Surveyor utility site.

BeBl_E03, West quarter corner Section 5 Township 10 North Range 2 West, (#501) 5/8" rebar (24" long) with 2" diameter aluminum cap inscribed MONROE COUNTY SURVEYORS OFFICE SHEPPARD PLS #20100021, set flush with ground, 3' south of the south edge of a farm field, 25' north of the north top of bank of white river. The corner was determined as a lost Section corner. A lost Section corner is defined as a corner whose original position cannot be determined by substantial evidence, either from traces of the original mark or from acceptable evidence or reliable testimony that bears upon the original position, and whose location can be restored only by reference to one or more interdependent corners. The rebar was set on line between a stone found at the Northeast corner Section 6/Northwest corner Section 5 and a rebar set (in place of a found and removed nail) at the Southeast corner Section 6/ Southwest corner Section 5 and at a proportional split of the record vs measured dimension on and along said Section line, per the procedures set forth by the bureau of land management for establishment of a lost Section corner. It is noteworthy and peculiar that the original BLM notes and BLM plat for this line cite a distance of 80.91 chains (5340.06') for the Section line whereas the distance measured this survey was 5624.87' for a substantial difference (284.81') and even more peculiar that the original plat shows the north to south mid line of Section 6 as 84.74 chains (5592.84'), not significantly (subjective to opinion) different from the 5528.18' measured on and along said line this survey. As such I concluded a significant error of some kind took place in the original measurement, or documentation of the original measurement, of the East line Section 6/West line Section 5. I can only hypothesis that the error likely took place at the river, but without any conclusive evidence of this hypothesis, I felt the corner at BeBl_E03 had to be set proportionally from the record dimensions. There is undoubtedly significant, unresolvable uncertainty that this is truly where the corner was originally set. More detailed information about this corner, including the corners known history, location relative to occupation lines, reference ties, State Plane coordinates, photos etc. is available on a Monument Record card in the Monroe County Surveyors Office and on their online Monroe County Surveyor utility site.

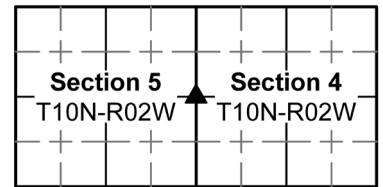
SHEET 2 OF 3	CORNER PERPETUATION SURVEY SECTION 5 – T10N - R02W Bean Blossom Township Monroe County, Indiana	Project: 2024-001 Field work by: Michael E. Sheppard, William E. Phillips & Jason M. George Drawn by: JMG Reviewed by: MES, TER & SRB		OFFICE OF THE MONROE COUNTY SURVEYOR Trohn Enright-Randolph <i>Monroe County Surveyor</i> 501 N Morton Street Ste. 205, Bloomington, IN 47404 surveyoroffice@co.monroe.in.us
-------------------------------------	---	---	---	---

MONUMENT RECORD

Corner ID: **BeBI_I03**

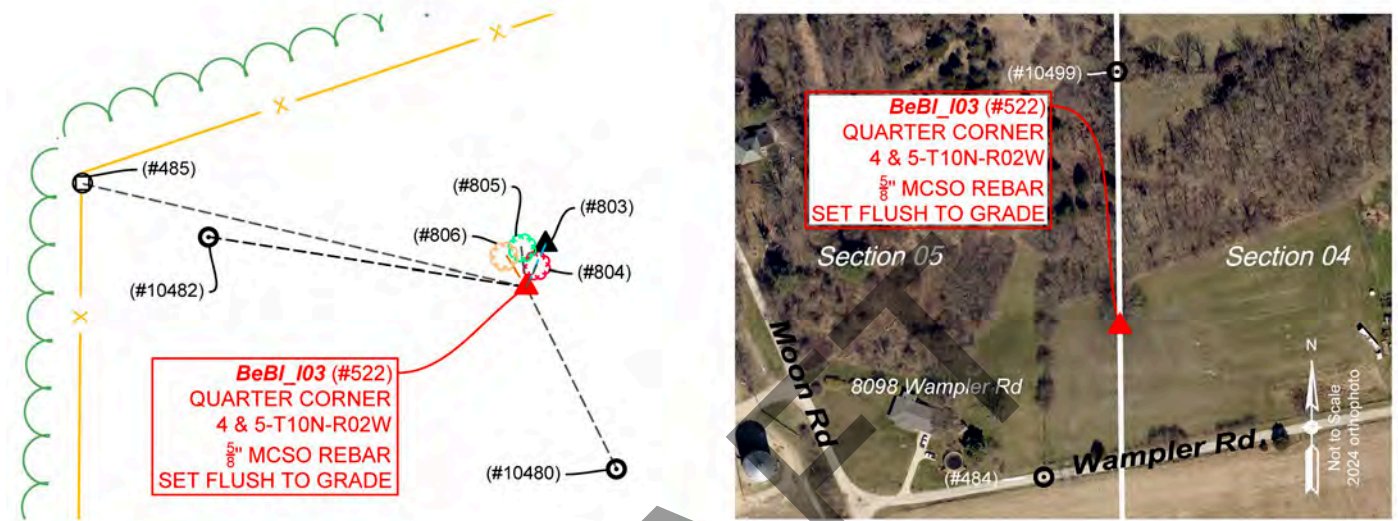
Quarter Corner

Sections 4 & 5 -T10N-R02W, 2nd P.M.
Bean Blossom Township, Monroe County, Indiana



MONUMENT: Describe monument set or found (Include material type, scribing, distance above/below grade, dimensions.)
 (#522) 5/8" rebar (24" long) with 2" diameter aluminum cap inscribed MONROE COUNTY SURVEYORS OFFICE SHEPPARD PLS #20100021, set, with top flush with ground, near the South edge of a cluster of trees inside a crop field.

MONUMENT LOCATION SKETCH:



WITNESS MONUMENT TIES: Describe at least three new BT's (Bearing Trees) and/or witness objects established or work done to preserve existing evidence. BT diameters are noted as dbh (diameter at breast height) and are measured approximately 4.5' above ground. Bearings and Distances are measured from the monument to the center of the BT. Bearings and Distances to witness ties were measured with a Sokkia Set 510 Total Station.

ID	Bearing	Distance	Description
(#806)	N32° 38'W	9.5'	12" diameter Walnut tree
(#805)	N07° 24' W	10.4'	10" Hackberry tree
(#804)	N25° 40'E	6.4'	24" diameter Walnut tree-this is the West fork of a twin walnut. The east fork has a hive of Honeybees living in it!
(#803)	N24° 35'E	12.2'	Center of 1' by 1' limestone found lying flat, 0.3' BG
(#485)	N76° 58'W	119.3'	Wood corner post in at north-south and northeast fence corner.

MONUMENT ACCESSORIES

Other survey grade monuments that were located in the vicinity and their relation to the monument. Witnesses noted as a Rebar Lite are a 5/8" diameter by 16" polycarbonate rod with a 1-1/2" mag nail in top and yellow plastic cap stamped "MONROE COUNTY WITNESS POINT" set 0.1 foot below grade unless otherwise noted.

Geodetic coordinates in this table are provided in the format Northing, Easting

(#10499)	N00°37'25"W	399.89'	N:1488259.1274' E:3075487.5841' 1/2" Rebar found 0.4' above ground at Southwest base of wood railroad tie corner post at south and east fence corner. Potter PLS capped rebar found S85° 06' 53"W 17.06'
(#484)	S26° 49' 36"W	265.72'	N:1487622.1386' E:3075372.0172' Railroad Spike found 0.1' BG ±CL of east-west road at North fence line extended
(#10480)	S26° 29' 11"E	53.23'	N:1487811.6149' E:3075515.6768' Rebar Lite
(#10482)	N81°08'31"W	84.41'	N:1487872.2595' E:3075408.5289' Rebar Lite



OFFICE OF THE MONROE COUNTY SURVEYOR • Trohn Enright-Randolph

501 N Morton Street Ste 205, Bloomington, IN 47404 • 812-349-2570 • surveyorsoffice@co.monroe.in.us

MONUMENT RECORD

Corner ID: **BeBI_I03**

Quarter Corner

Sections 4 & 5 -T10N-R02W, 2nd P.M.
 Bean Blossom Township, Monroe County, Indiana

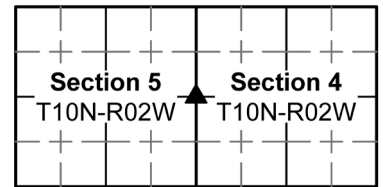


PHOTO IDENTIFIED: Photo Date: 07/19/2024



From Above



From South looking North

EXISTING SURVEY HISTORY *Include as much detail and history of the corner as known at the time of perpetuation*

ORIGINAL GOVERNMENT SURVEY:

Year Surveyed: 1815 By: William Harris Deputy Surveyor
 Where filed or recorded: Original notes page 254.
 Original monument: Post
 Bearing Trees or Reference Monuments:

Species	Dia.	Bearing	Distance
Beech	5"	N84°W	3 Links
W Oak	16"	S40°E	13 Links

Notes:

SUBSEQUENT CORNER RESTORATION:

Date Surveyed: 10/19/1891 By: George B. Rader, Monroe County Surveyor.
 Where filed or recorded: Legal Survey Book 2, page 507
 Original monument: Post
 Bearing Trees or Reference Monuments:

Species	Dia.	Bearing	Distance
Sugar	28"	S81°W	18 ½ Links
B Walnut	11"	N 25 1/2°W	115 2/3 Links

Notes:

SUBSEQUENT CORNER RESTORATION:

None Found

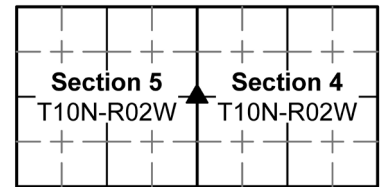


MONUMENT RECORD

Corner ID: **BeBI_I03**

Quarter Corner

Sections 4 & 5 -T10N-R02W, 2nd P.M.
Bean Blossom Township, Monroe County, Indiana



OTHER SURVEY HISTORY: *Include details such as surveyor name, date, recording info, monument description, etc.*

DocumentDate	SurveyID	Surveyor	Description	Source	Cabinet_Book_01	Envelope_Page_01	InstrumentNo
3/18/2005	RSID004152	Gwinn, Jess A.	Powell Admin. Type "A" Subd.	Recorder's Office	Survey Cabinet S	275	2005006391.IN
9/20/1975	RSID004168	Farkas, Edmund O.		0.96 acre survey			

ORIGINAL OR SUBSEQUENT SURVEY EVIDENCE FOUND: *Include, search area or areas, search procedure, etc.*

Date of Field work/Search: 05/09/24, 05/13/24 & 07/25/24 By: MES/JMG Monument Found: None-Rebar set BTs or Reference Objects Found: No, but references made. Project #: 24-001 Field Book: 56, pages 40,43,74&75. Notes:

OTHER EVIDENCE: *Describe corner location relative to nearby features and how to reach the corner location – note fences, roads, timber cutting lines, mow lines, clearings, plantings, streams, topo changes, etc.*

We reached the corner by parking in the grass on the North shoulder of West Wampler road, at a fence line on the East side of a parcel of land at 8098 West Wampler Road Gosport Indiana and walking around a fence, approximately 265' to the corner. Rebar set is in the South edge of a cluster of trees, in a hilly crop field, ±117' East of a north-south fence line and ±66' South of a fence line that runs at a bearing of ±N69°14'E.

MONUMENT PRESERVATION: *Describe work done to preserve existing monument.*

The rebar was set. GPS coordinates were established on the rebar. 2 Rebar Lites were set within sight of the rebar, additionally a ½" rebar and a railroad spike were located nearby, that could be used to reestablish its location, should it become obliterated. Additionally, references were made to trees, a post and a stone found, to visually aid in finding it. A steel post with Monroe County Surveyors Office survey marker sign attached 3.4' AG, facing South, was set 0.4' South of the rebar.

THEORY OF LOCATION: *Describe the theory of location for acceptance of this monument. Include monument origin and associated uncertainty.*

The rebar was set at the extension of a line beginning at the ½" rebar at the Northeast corner of Section 5/Northwest corner of Section 4, Township 10 North Range 2 West (#170-BeBI_I01) through a ½" rebar found (#10499), at an old east-west and north fence corner and at record distance per the description of a parcel of land described in Deed Record Book 374, page 247 (instrument #006409) in the Monroe County Recorder's Office, of 399.89' from said ½" rebar. Said ½" rebar is called out as being on the Section line in the record description of a parcel of land described in instrument #218255 and a survey by Jess Gwinn PLS recorded in instrument #2005006391 (RSID004152 in the Monroe County Surveyors Office). We also found a Potter PLS capped rebar at the base of a wood corner post at East and South fence corner, S85° 06' 53"W 17.06', from the ½" rebar accepted as being on the Section line. I called Mr. Potter about this rebar, and he said he vaguely remembered doing a survey in the area about 25 years ago and that he would look for the survey, but I never heard back from him. It would appear this second rebar is the one called for in the record description in Deed Record Book 405, page 151 (instrument #218255) as being 16.46' from the rebar at #10499, which rebar at #10499, is cited in said document, as being on the Section line. We scanned and probed a large area in search of any kind of monument in the vicinity of BeBI_I03 but found nothing. The record description of a 5.43-acre parcel described in instrument #2014005485 calls for a stone on the Section line, 63' North of the half mile post. We probed this area too and did observe a stone with possible survey characteristics lying on the ground ±66' North and 10' East of the rebar set. Additionally, it is noteworthy that the rebar set is ±66' South of a fence that runs at a ±N69°14' Bearing. Said instrument #2014005485 cites this parcel line as "Southwesterly". In my opinion the rebar set this survey bears an uncertainty of 4' north-south and 4' east-west of being at the originally established location of the Quarter Section corner.

GEODETIC COORDINATES: *Northing: 1487859.3' Easting: 3075491.9'*

BASIS OF GEODETIC COORDINATES:

The basis of bearings is Grid North NAD83(2011), Indiana West Zone, Epoch 2010.0000, Geoid Model G2012BU7, Datum NAD83_NO_TRANS, US Survey Feet, derived from GPS observations utilizing the Indiana Real-Time Network (INCORS). Coordinate data was collected with a Javad Triumph LS Network Rover and/or with a Sokkia Set 510 Total Station radially from points located with GPS. Distances obtained with GPS have not been adjusted to ground. To adjust grid distances to ground distances multiply them by a scale factor of 1.000041208.

This document is not complete without the associated Corner Perpetuation plat and report of survey for Section 4 or 5, Township 10 North Range 2 West, by Michael E. Sheppard of the Monroe County Surveyor's Office.



OFFICE OF THE MONROE COUNTY SURVEYOR • Trohn Enright-Randolph

501 N Morton Street Ste 205, Bloomington, IN 47404 • 812-349-2570 • surveyorsoffice@co.monroe.in.us

MONUMENT RECORD

Corner ID: **BeBI_I05**

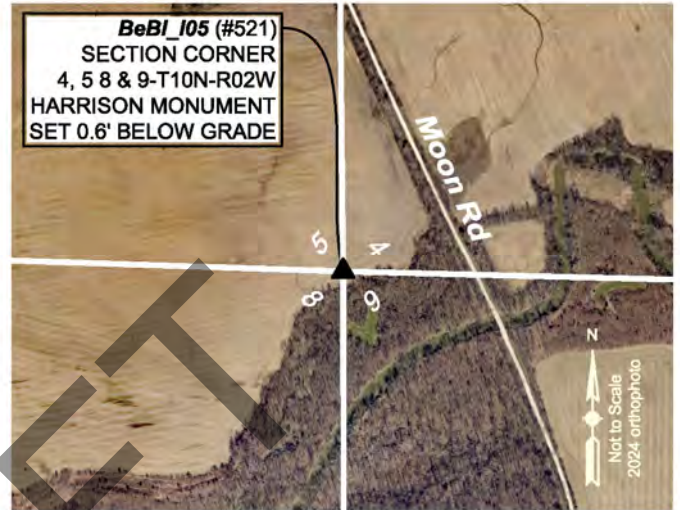
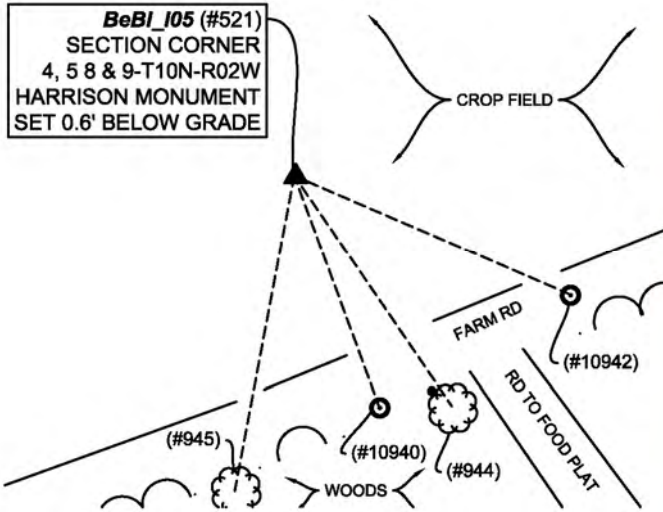
Section Corner

Sections 4, 5, 8 & 9- T10N-R02W, 2nd P.M.
 Bean Blossom Township, Monroe County, Indiana

Section 05 T10N-R02W	Section 04 T10N-R02W
Section 08 T10N-R02W	Section 09 T10N-R02W

MONUMENT: Describe monument set or found (Include material type, scribing, distance above/below grade, dimensions.)
 (#521) Harrison monument set with top left 0.6' below ground in a crop field.

MONUMENT LOCATION SKETCH:



WITNESS MONUMENT TIES: Describe at least three new BT's (Bearing Trees) and/or witness objects established or work done to preserve existing evidence. BT diameters are noted as dbh (diameter at breast height) and are measured approximately 4.5' above ground. Bearings and Distances are measured from the monument to the center of the BT. Bearings and Distances to witness ties were measured with a Sokkia Set 510 Total Station.

ID	Bearing	Distance	Description
#944	S34° 22'E	87.2'	13" diameter soft Maple tree with survey marker sign 4' up facing Northwest
#945	S10° 42'W	100.1'	10" diameter soft Maple tree

MONUMENT ACCESSORIES

Other survey grade monuments that were located in the vicinity and their relation to the monument. Witnesses noted as a Rebar Lite are a 5/8" diameter by 16" polycarbonate rod with a 1-1/2" mag nail in top and yellow plastic cap stamped "MONROE COUNTY WITNESS POINT" set 0.1 foot below grade unless otherwise noted.

Geodetic coordinates in this table are provided in the format Northing, Easting

(#10940)	S20° 11' 32"E	77.10'	N:1485044.7812' E:3075548.3575' Rebar Lite
(#10942)	S66° 37' 32"E	93.25'	N:1485080.1449' E:3075607.3446' Rebar Lite 3 1/2' North of an 8" diameter Honey Locust (thorn) tree



OFFICE OF THE MONROE COUNTY SURVEYOR • Trohn Enright-Randolph

501 N Morton Street Ste 205, Bloomington, IN 47404 • 812-349-2570 • surveyorsoffice@co.monroe.in.us

MONUMENT RECORD

Corner ID: **BeBI_I05**

Section Corner

Sections 4, 5, 8 & 9- T10N-R02W, 2nd P.M.
 Bean Blossom Township, Monroe County, Indiana

Section 05 T10N-R02W	Section 04 T10N-R02W
Section 08 T10N-R02W	Section 09 T10N-R02W

PHOTO IDENTIFIED: Photo Date: 10/30/2024



Photo Orientation & Description: Looking Down at BeBI_I05



Photo Orientation & Description: Looking West at BeBI_I05



Photo Orientation & Description: Looking south at BeBI_I05



Photo Orientation & Description: Looking east at BeBI_I05

EXISTING SURVEY HISTORY Include as much detail and history of the corner as known at the time of perpetuation

ORIGINAL GOVERNMENT SURVEY:

Year Surveyed: 1815 By: William Harris Deputy Surveyor

Where filed or recorded: Original Notes Page 259

Original monument: Post

Bearing Trees or Reference Monuments:

Species	Dia.	Bearing	Distance
W Beech	7"	N49°W	16 Links
Beech	12"	S21°E	37 Links

Notes:

SUBSEQUENT CORNER RESTORATION:

Date Surveyed: May 2, 1889 By: M.H. Buskirk Monroe

County Surveyor

Where filed or recorded: Legal Survey Book 2, Page 473.

Original monument: Stone in open ground

Bearing Trees or Reference Monuments:

None



OFFICE OF THE MONROE COUNTY SURVEYOR • Trohn Enright-Randolph

501 N Morton Street Ste 205, Bloomington, IN 47404 • 812-349-2570 • surveyorsoffice@co.monroe.in.us

MONUMENT RECORD

Corner ID: **BeBI_I05**

Section Corner

Sections 4, 5, 8 & 9- T10N-R02W, 2nd P.M.
Bean Blossom Township, Monroe County, Indiana

Section 05 T10N-R02W	Section 04 T10N-R02W
Section 08 T10N-R02W	Section 09 T10N-R02W

OTHER SURVEY HISTORY: *Include details such as surveyor name, date, recording info, monument description, etc.*

DocumentDate	SurveyID	Surveyor	Description	InstrumentNo
1/12/1989	RSID004164	Graham, Raymond	235.91 acre survey	

ORIGINAL OR SUBSEQUENT SURVEY EVIDENCE FOUND BY THE MONROE COUNTY SURVEYORS OFFICE: *Include, search area or areas, search procedure, etc.*

Date of Field work/Search: 10/30/2024 By: MES/JMG Monument Found: Harrison Monument set. BTs or Reference Objects Found: Ne, but references made. Project #: 24-001 Field Book: 57, pages 42 & 43. Notes:

OTHER EVIDENCE: *Describe corner location relative to nearby features and how to reach the corner location – note fences, roads, timber cutting lines, mow lines, clearings, plantings, streams, topo changes, etc.*

The corner is in a crop field, there are no visible signs of occupation in the immediate area. We accessed the site via a farm lane from Moon Road, just North of the bridge over Bean Blossom creek.

MONUMENT PRESERVATION: *Describe work done to preserve existing monument.*

The Harrison Monument was set, trees were located as visual references, 2 Rebar Lites were set within view of the monument, just out of the crop line of the field, that could be used to reestablish its location, should it become obliterated.

THEORY OF LOCATION: *Describe the theory of location for acceptance of this monument. Include monument origin and associated uncertainty.*

The Harrison monument was set at the extension of and double the distance of a line beginning at the treated wood post found marking the East quarter corner Section 8/West quarter corner Section 9 (#682 BeBI_I07) through the stone found at #749 (BeBI_I06), since Legal Survey Book 2, Page 473 notes a Stone at this Section corner (BeBI_I05) and that the stone at BeBI_I06 was "set at 1/2 distance between NW corner and W 1/2 m post" (referring to Section 9). Thus, reestablishing the corner in this method follows in the footsteps of Monroe County Surveyor M. H. Buskirk's 1889 survey, as near as possible.

GEODETIC COORDINATES: *Northing: 1485117.1' Easting: 3075521.7'*

BASIS OF GEODETIC COORDINATES:

The basis of bearings is Grid North NAD83(2011), Indiana West Zone, Epoch 2010.0000, Geoid Model G2012BU7, Datum NAD83_NO_TRANS, US Survey Feet, derived from GPS observations utilizing the Indiana Real-Time Network (INCORS). Coordinate data was collected with a Javad Triumph LS Network Rover and/or with a Sokkia Set 510 Total Station radially from points located with GPS. Distances obtained with GPS have not been adjusted to ground. To adjust grid distances to ground distances multiply them by a scale factor of 1.000041156.

This document is not complete without the associated Corner Perpetuation plat and report of survey for Section 4, 5, 8 or 9, Township 10 North Range 2 West by Michael E. Sheppard of the Monroe County Surveyor's Office.



PENDING

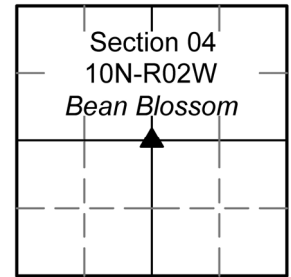
MONUMENT RECORD

Corner ID: **BeBI_K03**

Center 1/4 Corner

Section 4- T10N-R02W, 2nd P.M.

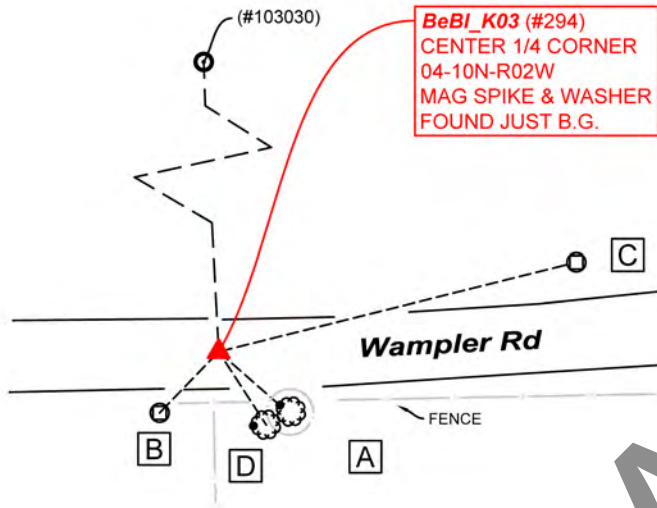
Bean Blossom Township, Monroe County, Indiana



MONUMENT: Describe monument set or found (Include material type, scribing, distance above/below grade, dimensions.)

(#294) Mag Spike & Washer stamped "Deckard" found just below grade near centerline of Wampler Road, ± at the extension of an old South bound fence line.

MONUMENT LOCATION SKETCH:



WITNESS MONUMENT TIES

All ties to new Bearing Trees (BTs) are a mag nail set in a 1-1/2" plastic washer stamped "SURVEY MARKER - DO NOT REMOVE" and hack mark at the root crown (less than 12" above ground) perpendicular to the center of the tree, unless otherwise noted. BT diameters are noted as dbh and are measured approximately 4.5' above ground. Bearings are measured from the monument to the center of the BT, distances are measured from the monument to the mag nail.

ID	BEARING	DISTANCE	DESCRIPTION
Witness A	S 48d E	17'	"Protect Nearby Survey Marker" sign set with 2 mag nails 4.3' above grade on the northwest side of 26" northeast trunk of bifurcated Pin Oak tree.
Witness B	S 44d W	18.2'	Center of hollow iron fence post 2.5" in diameter broken and jagged at (+/-) 1.4' above grade.
Witness C	N 76d E	76.6'	Back of post for "SPEED LIMIT 35" sign measured to center 4' above grade.
Witness D	S 33d E	18.7'	Mag nail and washer set in hack 0.8' above grade on southwest side of 27" southwest trunk of bifurcated Pin Oak Tree.

MONUMENT ACCESSORIES

Other survey grade monuments that were located in the vicinity and their relation to the monument. Witnesses noted as a Rebar Lite are a 5/8" diameter by 16" polycarbonate rod with a 1-1/2" mag nail in top and yellow plastic cap stamped "MONROE COUNTY WITNESS POINT" set 0.1 foot below grade unless otherwise noted.

(#103030)	N 2°49'36" W	258.65'	N:1487797.7000' E:3078138.1000' 5/8" rebar with yellow cap reading, "BRG INC 6892" found 0.5' above grade.
(#295)	N77° 55' 34"E	145.18'	N:1487797.5630' E:3078138.1769' Rebar Lite 13' North of north edge of pavement of road
(#296)	S78° 46' 38"W	55.07'	N:1487786.8442' E:3078084.1553' Rebar Lite 3' South of south edge of pavement of road



OFFICE OF THE MONROE COUNTY SURVEYOR • Trohn Enright-Randolph

501 N Morton St Ste 205, Bloomington, IN 47404 • 812-349-2570 • surveyoroffice@co.monroe.in.us

PENDING

MONUMENT RECORD

Corner ID: **BeBI_K03**

Center 1/4 Corner

Section 4- T10N-R02W, 2nd P.M.
Bean Blossom Township, Monroe County, Indiana

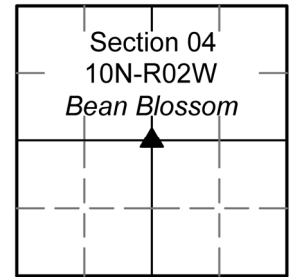


PHOTO IDENTIFIED: Photo Date: 11/04/2022



Photo Orientation & Description: BeBI_K03 from above



Photo Orientation & Description: Looking northeast at BeBI_K03 and Witness C

EXISTING SURVEY HISTORY Include as much detail and history of the corner as known at the time of perpetuation

ORIGINAL GOVERNMENT SURVEY:

This corner was not set in the original Government survey.

SUBSEQUENT CORNER ESTABLISHMENT:

Date Surveyed: December 14 & 15, 1897 By: M H Buskirk.

Where filed or recorded: Legal Survey Book 2, Page 547.

Original monument: Not Noted.

Bearing Trees or Reference Monuments:

Species	Dia.	Bearing	Distance
Red Oak	18"	N5°W	38 1/2 Links
Elm bush	1"	N30°E	16 Links

ORIGINAL CORNER ESTABLISHMENT:

Date Surveyed: December April 5, 1867 By: W S Alexander.

Where filed or recorded: Legal Survey Book 2, Page 130.

Original monument: Not Noted.

Bearing Trees or Reference Monuments:

Species	Dia.	Bearing	Distance
Spanish Oak	18"	N60°W	10 Links
Witness Stone	N/A	S68°E	10 Links

Notes:

ORIGINAL OR SUBSEQUENT SURVEY EVIDENCE FOUND: Include, search area or areas, search procedure, etc.

Date of Field work/Search: 11/04/2022 & 12/08/2022 By: JG & HJ 02/13/2024 By: MES & JMG Monument Found: Mag Spike with Washer BTs or Reference Objects Found: None Project #: Bean Blossom Stones & More & 24-001 Field Book: 55/13 & 56, page 1 Equipment: The basis of bearings is Grid North System NAD83(2011)/Indiana West NAVD 88, Epoch 2010.0000, geoid12b_conus.db3, US Survey Feet, derived from GPS observations utilizing the Indiana Real-Time Network (INCORS). Coordinate data was collected with a Javad Triumph LS Network Rover. Distances to witness ties were collected with a 100' measuring tape. Bearings to witness ties were collected with the internal magnetic compass of the Javad Triumph LS and were automatically adjusted to grid north and are approximately shown hereon for reference. Priority should be given to provided distances over bearings. Notes: All witness photos on file in the Monroe County Surveyors Office.



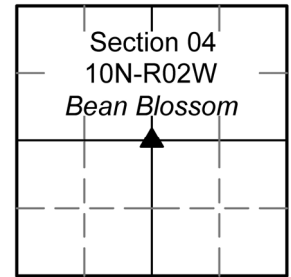
PENDING

MONUMENT RECORD

Corner ID: **BeBI_K03**

Center 1/4 Corner

Section 4- T10N-R02W, 2nd P.M.
Bean Blossom Township, Monroe County, Indiana



OTHER EVIDENCE: Describe corner location relative to nearby features and how to reach the corner location – note fences, roads, timber cutting lines, mow lines, clearings, plantings, streams, topo changes, etc.

Monument was found in the approximate center of Wampler Road west of its intersection with Sand College/Brighton Roads, ±in line with the extension of an old south bound fence line.

MONUMENT PRESERVATION: Describe work done to preserve existing monument.

Geodetic coordinates were collected on the spike, 2 rebar Lites and a found rebar, that could be used to reestablish its location should it become obliterated. Four other new witnesses were established. "Protect Nearby Survey Markers" sign was set.

THEORY OF LOCATION: Describe the theory of location for acceptance of this monument. Include monument origin and associated uncertainty.

The Mag Spike and Washer were set by Eric L. Deckard PLS, while in course of performing Chambers Sliding Scale Subdivision Final Plat (2023) on file at the Recorder's Office as 2023002861.IN. Mr. Deckard states, "Raymond Graham witnessed a PK Nail marking this corner in 1997," citing a survey recorded with a Warranty Deed on file at the Recorder's Office as 721767.IN Mr. Deckard continues, "Two (2) rebar set in that survey were found and used to perpetuate the position of this corner. The position was found to fall in the approximate intersection of the centerline of W. Wampler Road and the extension of a south bound fence line south of the road. The procedures set forth by the Bureau of land management for establishing the center of a Section of land is to establish it at the intersection of lines adjoining opposite Quarter corners. This spike is ±5.1' West of a straight line between the concrete post (#369 BeBI_K01) at the North Quarter of the Section and the rebar between broken stone pieces (#10475 BeBI_K05) at the South Quarter of the Section and ±4.5' North of a straight line between the stone found (#267 BeBI_M03) at the East Quarter corner of the Section and the rebar set (#522 BeBI_I03) at the West Quarter corner of the Section and since the stone monument set in the original establishment of the center of the Section in Legal Survey Book 2, page 547, was not found, has, in my opinion an uncertainty of that magnitude.

CERTIFICATION:

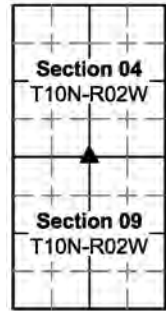


MONUMENT RECORD

Corner ID: **BeBI_K05**

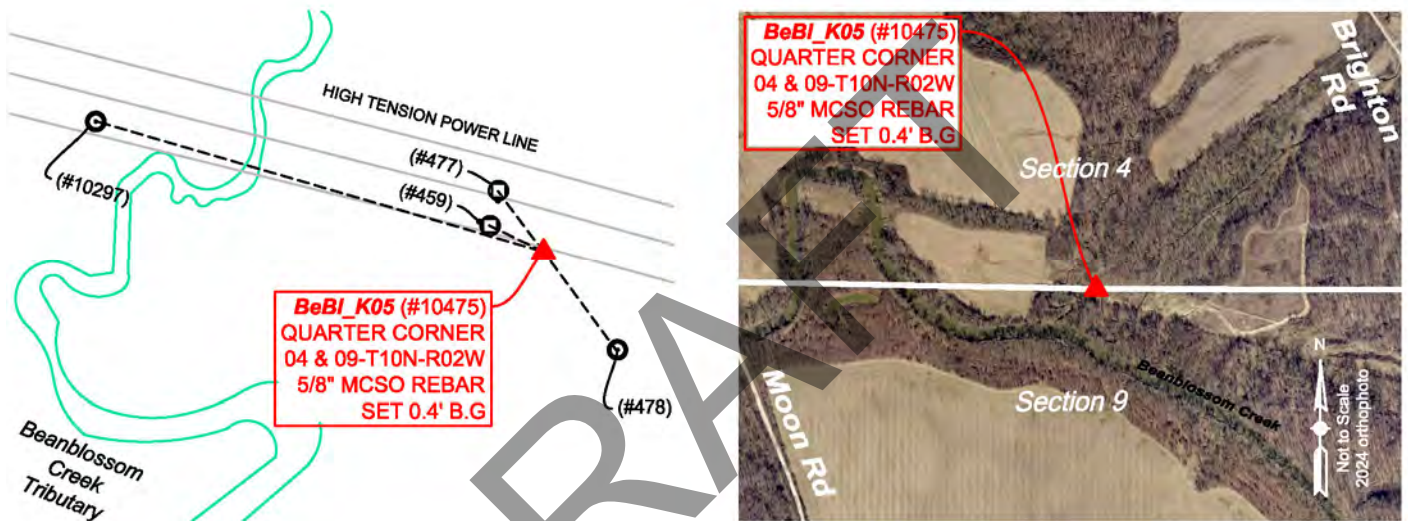
Quarter Corner

Sections 4 & 9- T10N-R02W, 2nd P.M.
 Bean Blossom Township, Monroe County, Indiana



MONUMENT: Describe monument set or found (Include material type, scribing, distance above/below grade, dimensions.)
 (#10475) 5/8" rebar (24" long) with 2" diameter aluminum cap inscribed MONROE COUNTY SURVEYORS OFFICE SHEPPARD PLS #20100021, set 0.4' below ground, in the hole formed from a found and removed, bent, 5/8" rebar found 0.4' above ground. The bent found removed rebar was between 2 limestones, loosely imbedded in the ground. The North stone being a 1.2' long by 0.5' wide by 0.3' thick limestone and the South stone being 0.8' long by 0.5' wide by 0.3' thick limestone, 1' west of a Sycamore land trust sign. It appears these stones are segments of 1 broken stone, lying relatively flat on the ground. The found and removed, bent rebar appears to be the rebar set by Jess Gwinn in survey by him recorded in instrument #2003030618 in the Monroe County Recorder's Office, RSID004161 in the Monroe County Surveyors Office, described as a 5/8" rebar set in the center of stone remnants.

MONUMENT LOCATION SKETCH:



WITNESS MONUMENT TIES: Describe at least three new BT's (Bearing Trees) and/or witness objects established or work done to preserve existing evidence. BT diameters are noted as dbh (diameter at breast height) and are measured approximately 4.5' above ground. Bearings and Distances are measured from the monument to the center of the BT. Bearings and Distances to witness ties were measured with a Sokkia Set 510 Total Station.

ID	Bearing	Distance	Description
(#459)	N64° 07'W	31.3'	Power pole with survey marker sign attached
(#477)	N36° 49'W	39.4'	Mag nail set 2' up South side Power pole

MONUMENT ACCESSORIES

Other survey grade monuments that were located in the vicinity and their relation to the monument. Witnesses noted as a Rebar Lite are a 5/8" diameter by 16" polycarbonate rod with a 1-1/2" mag nail in top and yellow plastic cap stamped "MONROE COUNTY WITNESS POINT" set 0.1 foot below grade unless otherwise noted.

Geodetic coordinates in this table are provided in the format Northing, Easting

(#478)	S36° 20' 39"E	63.79'	N:1485048.9473' E:3078272.1012' MCSO witness cap placed on found and reset bent 5/8" rebar, now 0.1' BG
(#10297)	N73° 45' 59"W	242.07'	N:1485168.0013' E:3078001.8738' Rebar Lite



OFFICE OF THE MONROE COUNTY SURVEYOR • Trohn Enright-Randolph

501 N Morton Street Ste 205, Bloomington, IN 47404 • 812-349-2570 • surveyorsoffice@co.monroe.in.us

MONUMENT RECORD

Corner ID: **BeBI_K05**

Quarter Corner

Sections 4 & 9- T10N-R02W, 2nd P.M.
 Bean Blossom Township, Monroe County, Indiana

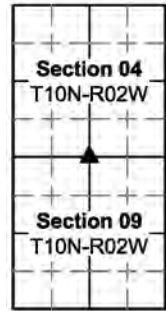


PHOTO IDENTIFIED: Photo Date: 05/09/2024



Photo Orientation & Description: From above



Photo Orientation & Description: From West looking East

EXISTING SURVEY HISTORY Include as much detail and history of the corner as known at the time of perpetuation

ORIGINAL GOVERNMENT SURVEY:

Year Surveyed: 1815 By: William Harris Deputy Surveyor

Where filed or recorded: Original Notes, Page 259

Original monument: Post

Bearing Trees or Reference Monuments:

Species	Dia.	Bearing	Distance
Beech	12"	N86°W	9 Links
Beech	10"	N80°E	15 Links

Notes:

SUBSEQUENT CORNER RESTORATION:

Date Surveyed: December 14 & 15 By: M.H. Buskirk

Where filed or recorded: Legal Survey Book 2, Page 547

Original monument: Not Noted

Bearing Trees or Reference Monuments:

Species	Dia.	Bearing	Distance
Black Walnut	15"	N83°W	65 Links
Ash	8"	N25°W	28 Links

Notes:

SUBSEQUENT CORNER RESTORATION:

None Found

OTHER SURVEY HISTORY: Include details such as surveyor name, date, recording info, monument description, etc.

DocumentDate	SurveyID	Surveyor	Description	InstrumentNo
12/14/1897	RSID004154	Bowers, Charles	Legal Survey Book 2, Page 547.	
9/28/2003	RSID004161	Gwinn, Jess A.	Powell Boundary Survey	2003030618.IN
8/8/2014	RSID005433	Oser, Rachel	Martin Family Retracement Survey	2016011069.IN
12/20/2019	RSID003659	Knoy, Matthew M.	Martin Family Sliding Scale Subd. Final plat	2020002711.IN



OFFICE OF THE MONROE COUNTY SURVEYOR • Trohn Enright-Randolph

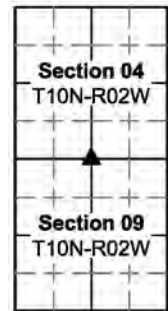
501 N Morton Street Ste 205, Bloomington, IN 47404 • 812-349-2570 • surveyorsoffice@co.monroe.in.us

MONUMENT RECORD

Corner ID: **BeBI_K05**

Quarter Corner

Sections 4 & 9- T10N-R02W, 2nd P.M.
Bean Blossom Township, Monroe County, Indiana



ORIGINAL OR SUBSEQUENT SURVEY EVIDENCE FOUND BY THE MONROE COUNTY SURVEYORS OFFICE: *Include, search area or areas, search procedure, etc.*

Date of Field work/Search: 02/13/24 & 05/09/24 *By:* MES/JMG *Monument Found:* Broken stone and bent rebar *BTs or Reference Objects Found:* No, but references established *Project #:* 24-001 *Field Book:* 56, pages 1,38&39 *Notes:*

OTHER EVIDENCE: *Describe corner location relative to nearby features and how to reach the corner location – note fences, roads, timber cutting lines, mow lines, clearings, plantings, streams, topo changes, etc.*

The corner is under a large power line and power line cut that runs east-west. We parked on the North side of the bridge over Bean Blossom creek on Moon Road and walked East to the corner. Readily visible occupation lines were not seen from the stone, though north bound fence remnants do exist north of the power line cut.

MONUMENT PRESERVATION: *Describe work done to preserve existing monument.*

We pulled the severely bent rebar found between the 2 stone pieces and set a straight one with aluminum cap in its place. GPS coordinates were established on the rebar. A survey marker sign was nailed to a power pole, 5' above ground, facing the monument. We located 2 power pole legs for visual references and a rebar lite and a rebar, within view of the monument, that could be used to reestablish its location should it become obliterated.

THEORY OF LOCATION: *Describe the theory of location for acceptance of this monument. Include monument origin and associated uncertainty.*

The rebar and broken stone were found. The rebar was set by Jess Gwinn, in survey by him recorded in instrument #2003030618 in the Monroe County Recorder's Office, RSID004161 in the Monroe County Surveyors Office. Mr. Gwinn's report cites:

A 5/8" rebar with plastic ID cap was set flush at the southwest corner of the northeast quarter of Section 4.

The rebar was set in the broken halves of a 4" x 6" stone found at this corner per survey 7. None of the accessories to the stone were found. The stone/rebar is 15 feet southwest of the centerline of the overhead

electric transmission lines.

I agree that this likely is the stone set in Legal Survey Book 2, Page 547 (survey 7 in Mr. Gwinn's references). However, with the stone being broken and shallowly imbedded, it may not be in its original location, though based on other monuments and occupation lines in and around the Section, I see no more reliable evidence as to the original location of the corner. Though there is in my opinion an uncertainty of as much as 5' in its location, due to its disturbed condition.

GEODETIC COORDINATES: *Northing:* 1485100.3' *Easting:* 3078234.3'

BASIS OF GEODETIC COORDINATES:

The basis of bearings is Grid North NAD83(2011), Indiana West Zone, Epoch 2010.0000, Geoid Model G2012BU7, Datum NAD83_NO_TRANS, US Survey Feet, derived from GPS observations utilizing the Indiana Real-Time Network (INCORS). Coordinate data was collected with a Javad Triumph LS Network Rover and/or with a Sokkia Set 510 Total Station radially from points located with GPS. Distances obtained with GPS have not been adjusted to ground. To adjust grid distances to ground distances multiply them by a scale factor of 1.000041208.

This document is not complete without the associated Corner Perpetuation plat and report of survey for Section 4 or 9 Township 10 North Range 2 West by Michael E. Sheppard of the Monroe County Surveyor's Office.



OFFICE OF THE MONROE COUNTY SURVEYOR • Trohn Enright-Randolph

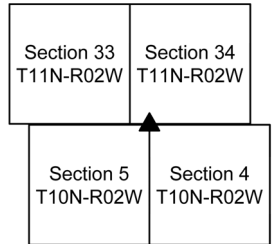
501 N Morton Street Ste 205, Bloomington, IN 47404 • 812-349-2570 • surveyorsoffice@co.monroe.in.us

MONUMENT RECORD

Corner ID: **BeBI_M01**

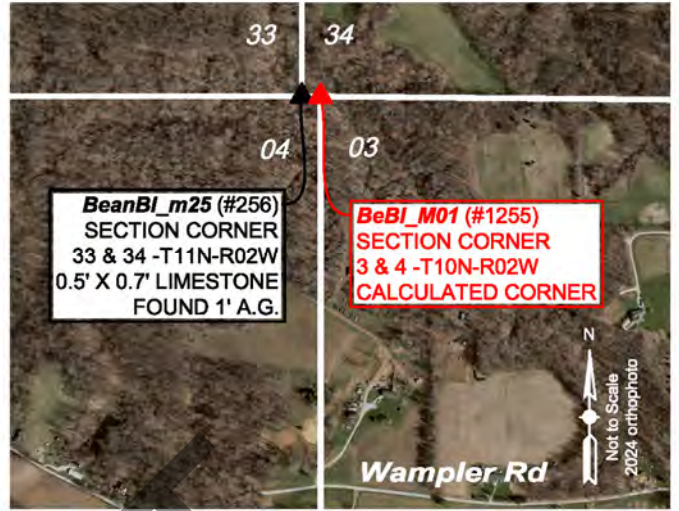
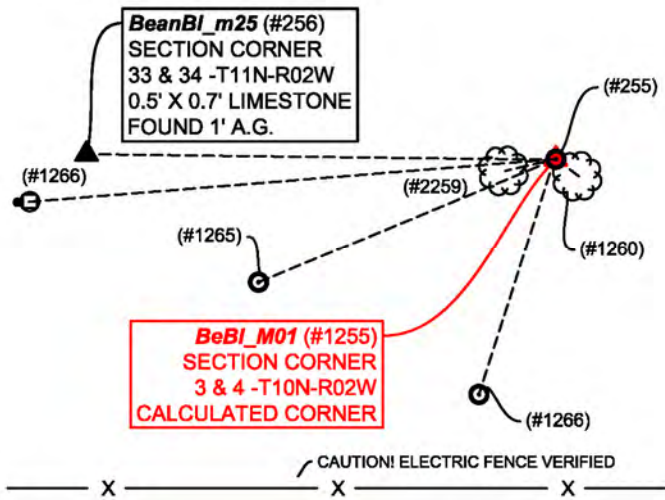
Section Corner

Sections 3 & 4- T10N-R02W, 2nd P.M.
 Bean Blossom Township, Monroe County, Indiana



MONUMENT: Describe monument set or found (Include material type, scribing, distance above/below grade, dimensions.)
 (#1255, BeBI_M01) is the calculated location of the Northeast corner of Section 4, Northwest corner of Section 3-Township 10 North Range 2 West, calculated on line between a stone found at the Southwest corner Section 34 Township 11 North Range 2 West (#256 BeanBI_m25) and a Mundy PLS capped rebar found at the South quarter corner of said Section (#10927), and at record distance of 148 Links (97.68') from said BeanBI_m25. A Deckard PLS capped rebar (#255) was found North 64° 23' East 0.4' from the calculated corner. As such, no additional corner monument was set.

MONUMENT LOCATION SKETCH:



MONUMENT ACCESSORIES			
Other survey grade monuments that were located in the vicinity and their relation to the monument. Witnesses noted as a Rebar Lite are a 5/8" diameter by 16" polycarbonate rod with a 1-1/2" mag nail in top and yellow plastic cap stamped "MONROE COUNTY WITNESS POINT" set 0.1 foot below grade unless otherwise noted.			
Geodetic coordinates in this table are provided in the format Northing, Easting			
Note all ties shown hereon are from the calculated corner, point #1255.			
(#255)	N64° 23'E	0.4'	N:1490815.8444' E:3080810.1546' Deckard PLS capped rebar found 0.4' ag.
(#256)	N89° 18' 37"W	97.68'	N:1490816.8566' E:3080712.1399' X cut on stone found (BeanBI_m25)
(#1265)	S67° 28' 09"W	66.88'	N:1490790.0534' E:3080748.0373' Rebar Lite
(#1266)	S17° 46' 46"W	51.54'	N:1490766.5983' E:3080794.0737' Rebar Lite

WITNESS MONUMENT TIES: Describe at least three new BT's and/or witness objects established or work done to preserve existing evidence. All ties to new Bearing Trees (BT's) are measured from the monument to the center of the tree. BT diameters are noted as dbh and are measured approximately 4.5' above ground. Other survey grade monuments that were located in the vicinity and their relation to the monument. Witnesses noted as a rebarlite are a 5/8" diameter by 16" polycarbonate rod with a 1-1/2" magnail and yellow plastic cap stamped "MONROE COUNTY WITNESS POINT" set 0.1 foot below grade unless otherwise noted. Geodetic coordinates in this table are provided in the format Easting, Northing.
Note all ties shown hereon are from the rebar found at point #255.

ID	Bearing	Distance	Description
(#1260)	S53° 27'E	6.0'	22" Red Oak tree
(#2259)	S76° 58'W	10.9'	20" Red Oak tree
(#1262)	S85° 23'W	110.4'	Mag nail in washer set 9" up on west side of 4' tall, 8" diameter wood post

PHOTO IDENTIFIED: Photo Date: 02/04/2024



Photo Orientation & Description: From above



Photo Orientation & Description: From South looking North

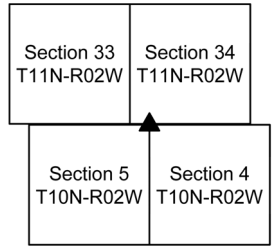


MONUMENT RECORD

Corner ID: BeBI_M01

Section Corner

Sections 3 & 4- T10N-R02W, 2nd P.M.
Bean Blossom Township, Monroe County, Indiana



EXISTING SURVEY HISTORY Include as much detail and history of the corner as known at the time of perpetuation

ORIGINAL GOVERNMENT SURVEY:

Year Surveyed: 1815 By: Thos Brown Deputy Surveyor
Where filed or recorded: Monroe County Original notes, page 255
Original monument: Post
Bearing Trees or Reference Monuments:

Table with 4 columns: Species, Dia., Bearing, Distance. Rows include Hickory (10", S68°E, 9 Links) and Poplar (14", S75°W, 12 Links).

Notes:

SUBSEQUENT CORNER RESTORATION:

Notes: In Legal Survey Book 2, page 11 it is noted starting at this corner and measuring South 187 poles to the 1/2 mile corner, but I never found any references to a monument at this corner after the original 1815 survey.

OTHER SURVEY HISTORY: Include details such as surveyor name, date, recording info, monument description, etc.

Table with 4 columns: Date, Surveyor, Description, File Location. Lists various survey dates from 1982 to 2021 and corresponding descriptions and file locations.

ORIGINAL OR SUBSEQUENT SURVEY EVIDENCE FOUND: Include, search area or areas, search procedure, etc.

Date of Field work/Search: 1/30/2024, 03/25/2024 By: MES/JMG Monument Found: Rebar BTs or Reference Objects Found: No, but references made. Project #: 24-001 Field Book: 55, pages 72 & 73, Field Book 56, page 24 Notes:

OTHER EVIDENCE: Describe corner location relative to nearby features and how to reach the corner location - note fences, roads, timber cutting lines, mow lines, clearings, plantings, streams, topo changes, etc.

We parked at a house at 6980 West Wampler Road Gosport In. We walked North and West from said house, into and around a cow pasture, following an electric fence along the crest of a ridge. The corner is on top of hill, just North of the electric fence. To the South is several old cars and trucks in the woods. There are traces of ancient east-west fence remnants in trees in the vicinity.

MONUMENT PRESERVATION: Describe work done to preserve existing monument.

The Rebar, that is 0.4' from the calculated corner was flagged, GPS located, references made to it and a steel post with Monroe County Surveyors Office witness sign facing South was placed 0.3' North of the Rebar.

THEORY OF LOCATION: Describe the theory of location for acceptance of this monument. Include monument origin and associated uncertainty.

The calculated location of the Northeast corner of Section 4, Northwest corner of Section 3 Township 10 North Range 2 West, was calculated on line between the stone found at the Southwest corner Section 34 Township 11 North Range 2 West (#256 BeanBI_m25) and a Mundy PLS capped rebar found at the South quarter corner of said Section (#10927), and at record distance of 148 Links (97.68') from said BeanBI_m25. A Deckard PLS capped rebar was found North 64° 23' East 0.4' from the calculated corner. As such, no additional corner monument was set.

GEODETIC COORDINATES: Northing: 1490815.7' Easting: 3080809.8'

BASIS OF GEODETIC COORDINATES: The basis of bearings is Grid North System NAD83 (2011)/Indiana West NAVD 88, Epoch 2010.0000, geoid12b_conus.db3, US Survey Feet. Tied to NSRS using the JAVAD GNSS Data Online Processing Service (DPOS) to post-process static observations collected with a Javad Triumph 2 base. Positional values of this corner were determined from static GNSS, RTK GNSS (Javad Triumph LS Rover), or with a Sokkia Set 510 Total Station radially from points located with GPS. Distances obtained with GPS have not been adjusted to ground. To adjust grid distances to ground distances multiply them by a scale factor of 1.0000412081.

This document is not complete without the associated Corner Perpetuation plat and report of survey for Section 3 or 4 Township 10 North Range 2 West, by Michael E. Sheppard of the Monroe County Surveyor's Office.

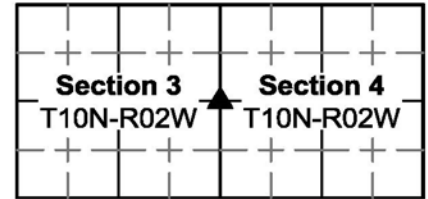


MONUMENT RECORD

Corner ID: **BeBI_M03**

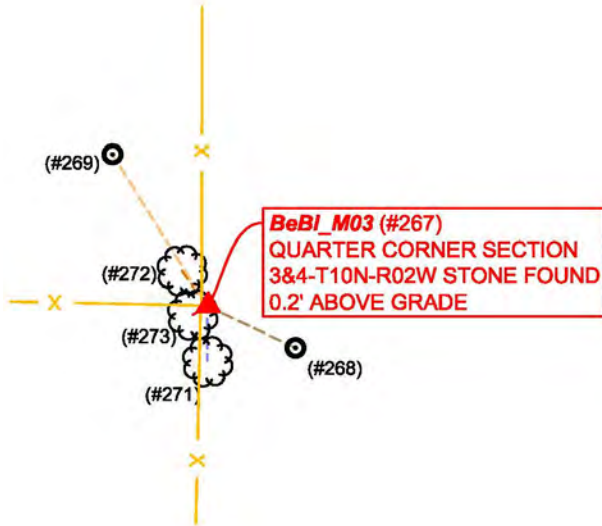
Quarter Corner

Sections 3 & 4-T10N-R02W, 2nd P.M.
Bean Blossom Township, Monroe County, Indiana



MONUMENT: Describe monument set or found (Include material type, scribing, distance above/below grade, dimensions.)
 (#267) 1.2' north-south by 1.0' east-west limestone found 0.2' above ground, with a cross on top (ground this survey) 1' east and 0.7' south of an old, rotten and falling wood corner post at old north-south and west fence corner. Stone has a Mundy PLS capped rebar against its northwest corner.

MONUMENT LOCATION SKETCH:



WITNESS MONUMENT TIES: Describe at least three new BT's (Bearing Trees) and/or witness objects established or work done to preserve existing evidence. BT diameters are noted as dbh (diameter at breast height) and are measured approximately 4.5' above ground. Bearings and Distances are measured from the monument to the center of the BT. Bearings and Distances to witness ties were measured with a Sokkia Set 510 Total Station.

ID	Bearing	Distance	Description
(#272)	N35° 43'W	33.6'	28" Poplar tree
(#273)	S59° 58'W	13.5'	14" White Oak tree
(#271)	S00° 12'W	42.5'	22" Pignut Hickory tree (fence attached to east side)

MONUMENT ACCESSORIES

Other survey grade monuments that were located in the vicinity and their relation to the monument. Witnesses noted as a Rebar Lite are a 5/8" diameter by 16" polycarbonate rod with a 1-1/2" mag nail in top and yellow plastic cap stamped "MONROE COUNTY WITNESS POINT" set 0.1 foot below grade unless otherwise noted.

Geodetic coordinates in this table are provided in the format Northing, Easting

(#268)	S49° 57' 53"E	57.09'	N:1487688.9824' E:3080878.3683' Rebar Lite in pasture
(#269)	N32° 05' 30"W	137.81'	N:1487842.4585' E:3080761.4420' Rebar Lite in grass field
(#270)	N40° 49' 16"W	0.77'	N:1487726.2884' E:3080834.1542 Mundy PLS capped rebar found flush



OFFICE OF THE MONROE COUNTY SURVEYOR • Trohn Enright-Randolph

501 N Morton Street Ste 205, Bloomington, IN 47404 • 812-349-2570 • surveyorsoffice@co.monroe.in.us

MONUMENT RECORD

Corner ID: **BeBI_M03**

Quarter Corner

Sections 3 & 4-T10N-R02W, 2nd P.M.
 Bean Blossom Township, Monroe County, Indiana

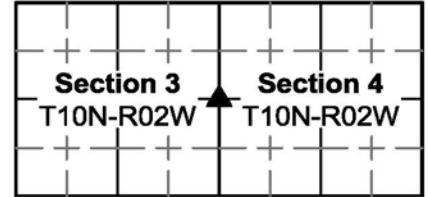


PHOTO IDENTIFIED: Photo Date: 02/05/2024



Photo Orientation & Description: From North looking South



Photo Orientation & Description: From East looking West

EXISTING SURVEY HISTORY Include as much detail and history of the corner as known at the time of perpetuation

ORIGINAL GOVERNMENT SURVEY:

Year Surveyed: 1815 By: William Harris Deputy Surveyor

Where filed or recorded: Original Notes Page 255

Original monument: post

Bearing Trees or Reference Monuments:

Species	Dia.	Bearing	Distance
W. Oak	17"	N16W	24 links
Beech	16"	N31E	13 links

Notes:

SUBSEQUENT CORNER RESTORATION:

Date Surveyed: 06/01/1859 By: James Spencer

Where filed or recorded: Legal Survey Book 2, Page 11

Original monument: Post

Bearing Trees or Reference Monuments:

Species	Dia.	Bearing	Distance
None given		°	
		°	

Notes:

SUBSEQUENT CORNER RESTORATION:

Date Surveyed: 04/05/1867 By: JW Alexander

Where filed or recorded: Legal Survey Book 2, Page 130

Original monument: Stone

Bearing Trees or Reference Monuments:

Species	Dia.	Bearing	Distance
None given		°	
		°	

Notes:

SUBSEQUENT CORNER RESTORATION:

Date Surveyed: 06/16/1881 By: MH Buskirk

Where filed or recorded: Legal Survey Book 2, Page 339

Original monument: Not noted

Bearing Trees or Reference Monuments:

Species	Dia.	Bearing	Distance
Elm	8"	S2 1/2°W	26 ½ links
B Walnut	2"	S78W	9 ½ links

Notes:

OTHER SURVEY HISTORY: Include details such as surveyor name, date, recording info, monument description, etc.

Date	RSID	Surveyor	Description	File Location
	RSID004089	Unknown	Survey in sections 2 & 3-T10N-R02W	
	RSID004135	Farkas, Edmund O.	Survey, Tracts A-G.	
	RSID004212	Bennett, James	"John E. & Karen S. Troth- Tract ""F""", Troth Type A Admin.	2009015969.IN



OFFICE OF THE MONROE COUNTY SURVEYOR • Trohn Enright-Randolph

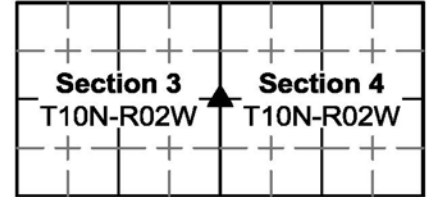
501 N Morton Street Ste 205, Bloomington, IN 47404 • 812-349-2570 • surveyorsoffice@co.monroe.in.us

MONUMENT RECORD

Corner ID: **BeBI_M03**

Quarter Corner

Sections 3 & 4-T10N-R02W, 2nd P.M.
Bean Blossom Township, Monroe County, Indiana



		C.	Subd. Final Plat"	
3/14/1989	RSID004136	Farkas, Edmund O.	8.66 acre survey	
3/14/1989	RSID004137	Farkas, Edmund O.	9.21 acre survey	
3/14/1989	RSID004159	Farkas, Edmund O.	9.21 acre survey	
5/27/1998	RSID004093	Mundy, Michael	Norman Walls Survey of proposed new parcel.	
5/27/1998	004119	Mundy, Michael D	Norman Walls Survey, survey of proposed new parcel.	
6/23/1998	004118	Mundy, Michael D	Retracement survey for Whiffen-Bowman. Larry R. Bowman & Ursula Bowman, Donald S. Whiffen & Cheryl Whiffen. Also included are corner ID's; BeanBI_M25, BeanBI_N23-N25, and BeanBI_O21-O25.	
3/30/2008	004117	Bennett, James C.	"Type ""A"" Admin. Subd., John E. & Karen S. Troth, Tract ""F""."	
10/29/2021	004655	Deckard, Eric Lee	Merriman Sliding Scale Subdivision Final Plat	2021022956.IN

ORIGINAL OR SUBSEQUENT SURVEY EVIDENCE FOUND BY THE MONROE COUNTY SURVEYORS OFFICE: *Include, search area or areas, search procedure, etc.*

Date of Field work/Search: 11/23/1998 *By:* Kevin Enright *Monument Found:* Stone *BTs or Reference Objects Found:* Yes *Project #:* 98-02 *Field Book:* 98 *Notes:* 38

Date of Field work/Search: 02/05/2024 *By:* MES/JMG *Monument Found:* Stone *BTs or Reference Objects Found:* Yes *Project #:* 24-001 *Field Book:* 55. Pages 74 & 75 *Notes:*

OTHER EVIDENCE: *Describe corner location relative to nearby features and how to reach the corner location – note fences, roads, timber cutting lines, mow lines, clearings, plantings, streams, topo changes, etc.*

We reached the stone via a mowed grass strip that runs from a house at 7000 W Wampler road, back to a north-south fence line's intersection with the edge of a woods. Following north-south fence line ±105' beyond edge of woods to its intersection with an old west bound fence. Stone is 1' east and 0.7' south of an old rotted, falling wood corner post at old north-south-west fence corner.

MONUMENT PRESERVATION: *Describe work done to preserve existing monument.*

We placed a steel post with survey marker sign attached to it, 3' above ground, facing east, against the east edge of the stone. We ground a cross on top of the stone. We established state plane coordinates on the stone. We located 3 trees for visual references and set 2 rebar lite monuments within view of the stone, that could be used to reestablish the stones location should it become obliterated.

THEORY OF LOCATION: *Describe the theory of location for acceptance of this monument. Include monument origin and associated uncertainty.*

Found-relative to its history and location relative to occupation lines and other monuments located in the area, the stone is in my opinion the most reliable evidence of the original location of the east quarter of Section 4/west quarter corner of Section 3, with negligible uncertainty.

GEODETIC COORDINATES: *Northing:* 1487725.7, *Easting:* 3080834.7

BASIS OF GEODETIC COORDINATES:

The basis of bearings is Grid North NAD83(2011), Indiana West Zone, Epoch 2010.0000, Geoid Model G2012BU7, Datum NAD83_NO_TRANS, US Survey Feet, derived from GPS observations utilizing the Indiana Real-Time Network (INCORS). Coordinate data was collected with a Javad Triumph LS Network Rover and/or with a Sokkia Set 510 Total Station radially from points located with GPS. Distances obtained with GPS have not been adjusted to ground. To adjust grid distances to ground distances multiply them by a scale factor of 1.000041208.

This document is not complete without the associated Corner Perpetuation plat and report of survey for Section 3 or 4 Township 10 North Range 2 West, by Michael E. Sheppard of the Monroe County Surveyor's Office.



MONUMENT RECORD
State of Indiana - County of Monroe

Section: 03

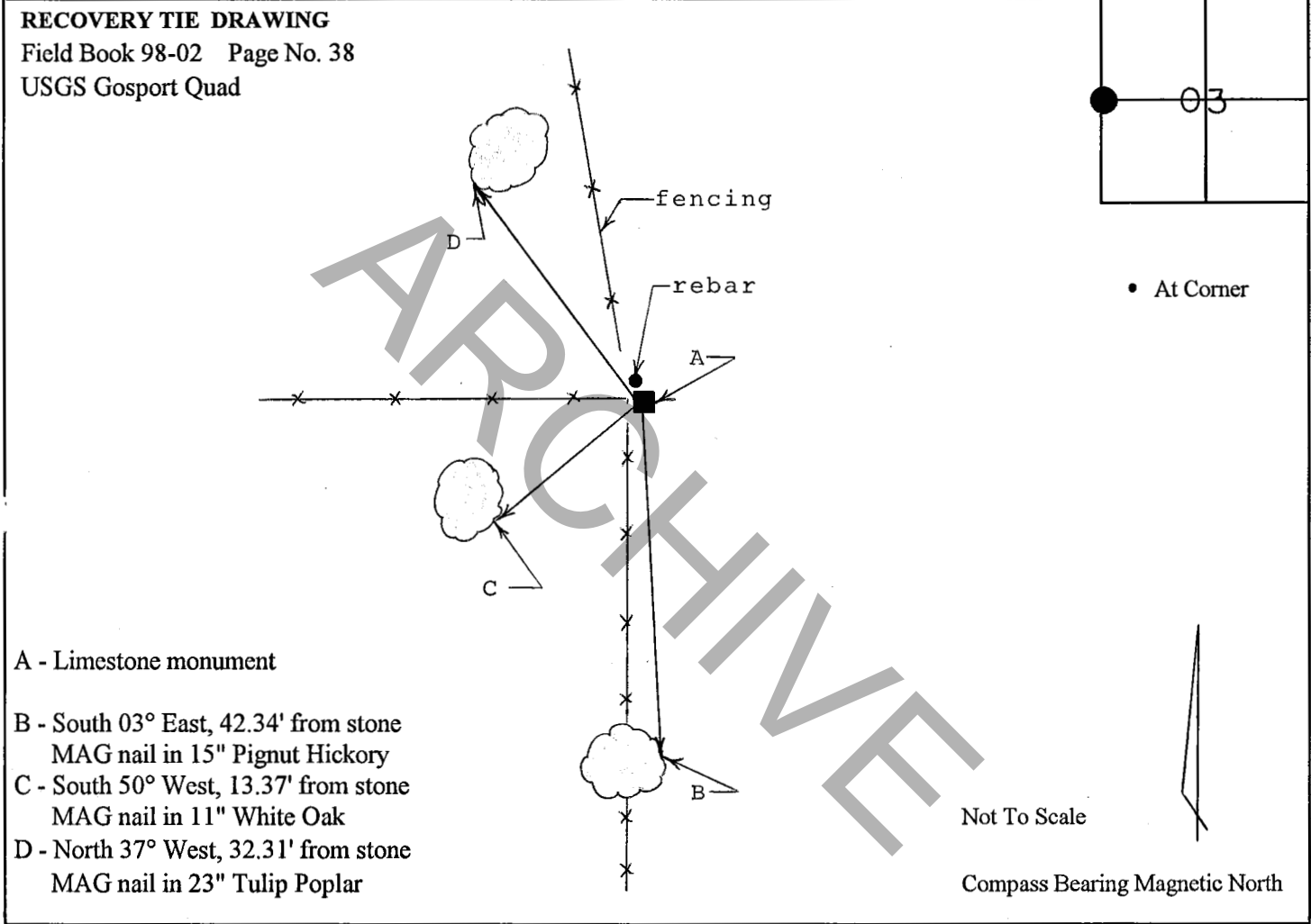
Township: 10 North

Range: 2 West

Corner ID: Be Bl M-03

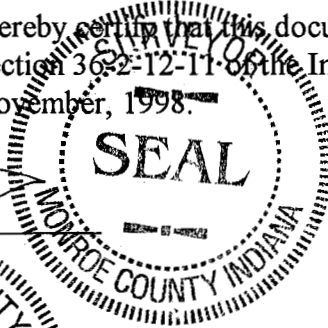
Monument Description & Remarks: Found Limestone monument at West ¼ corner of section. Limestone measured 0.54' (h) x 1.16' (l) x 1.10' (w); marked with capped rebar set by Mike Mundy (see reference below). Survey marker sign set 3' up on nearby fence post.

References on file in the County Surveyor's Office: Survey by Michael Mundy, R.L.S. No. 880014, dated May 27, 1998, for Norman and Glora Mae Walls.



I, Kevin P. Enright, Monroe County Surveyor, hereby certify that this document was prepared under my direction in accordance with the provisions of Section 36-2-12-11 of the Indiana Code; and the above data is given under my hand and seal this 23rd day of November, 1998.

Kevin P. Enright



Administered by Surveyor Review Board

MONUMENT RECORD

Corner ID: **BeBI_M05**

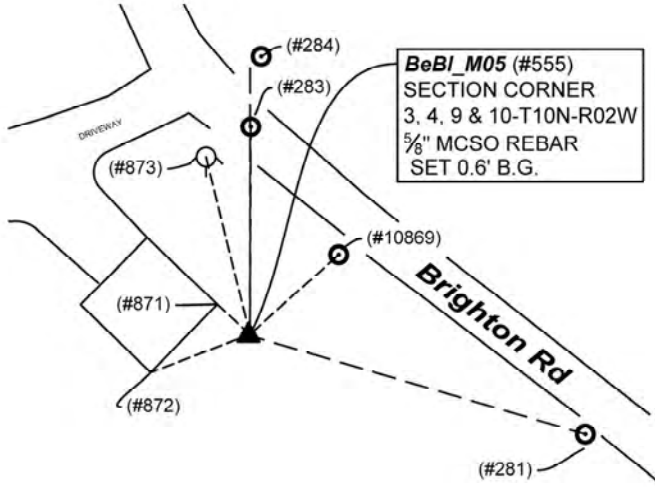
Section Corner

Sections 3, 4, 9 & 10- T10N-R02W, 2nd P.M.
Bean Blossom Township, Monroe County, Indiana

Section 04 T10N-R02W	Section 03 T10N-R02W
Section 09 T10N-R02W	Section 10 T10N-R02W

MONUMENT: Describe monument set or found (Include material type, scribing, distance above/below grade, dimensions.)
 (#555) 5/8" rebar (24" long) with 2" diameter aluminum cap inscribed MONROE COUNTY SURVEYORS OFFICE SHEPPARD PLS #20100021, set with top 0.6' below ground, in a mowed area that was formerly a garden.

MONUMENT LOCATION SKETCH:



WITNESS MONUMENT TIES: Describe at least three new BT's (Bearing Trees) and/or witness objects established or work done to preserve existing evidence. BT diameters are noted as dbh (diameter at breast height) and are measured approximately 4.5' above ground. Bearings and Distances are measured from the monument to the center of the BT. Bearings and Distances to witness ties were measured with a Sokkia Set 510 Total Station.

ID	Bearing	Distance	Description
(#871)	N47° 28'W	18.7'	Northeast corner of pole barn
(#872)	S69° 12'W	44.8'	SouthEast corner of pole barn
(#873)	N13° 58'W	76.8'	Western most nut on bottom flange of Fire Hydrant

MONUMENT ACCESSORIES

Other survey grade monuments that were located in the vicinity and their relation to the monument. Witnesses noted as a Rebar Lite are a 5/8" diameter by 16" polycarbonate rod with a 1-1/2" mag nail in top and yellow plastic cap stamped "MONROE COUNTY WITNESS POINT" set 0.1 foot below grade unless otherwise noted.

Geodetic coordinates in this table are provided in the format Northing, Easting

(#10869)	N47° 57' 50"E	50.29'	N:1485119.2950' E:3080900.8920' Rebar Lite
(#283)	N00° 13' 53"E	87.45'	N:1485173.0634' E:3080863.8902' Mag Spike found flush in center of road
(#284)	N00° 02' 19"E	112.06'	N:1485197.6773' E:3080863.6129' Deckard PLS capped rebar found
(#281)	S73° 32' 53"E	147.28'	N:1485043.9058' E:3081004.7896' Mag hub nail set



OFFICE OF THE MONROE COUNTY SURVEYOR • Trohn Enright-Randolph

501 N Morton Street Ste 205, Bloomington, IN 47404 • 812-349-2570 • surveyorsoffice@co.monroe.in.us

MONUMENT RECORD

Corner ID: **BeBI_M05**

Section Corner

Sections 3, 4, 9 & 10- T10N-R02W, 2nd P.M.
 Bean Blossom Township, Monroe County, Indiana

Section 04 T10N-R02W	Section 03 T10N-R02W
Section 09 T10N-R02W	Section 10 T10N-R02W

PHOTO IDENTIFIED: Photo Date: 08/07/2024



Photo Orientation & Description: From above



Photo Orientation & Description: From East looking West

EXISTING SURVEY HISTORY Include as much detail and history of the corner as known at the time of perpetuation

ORIGINAL GOVERNMENT SURVEY:

Year Surveyed: 1815 By: William Harris Deputy Surveyor
 Where filed or recorded: Original notes, Page 254.

Original monument: Post

Bearing Trees or Reference Monuments:

Species	Dia.	Bearing	Distance
Beech	5"	N84°W	3 Links
W Oak	16"	S40°E	13 Links

Notes:

SUBSEQUENT CORNER RESTORATION:

None Found

OTHER SURVEY HISTORY: Include details such as surveyor name, date, recording info, monument description, etc.

DocumentDate	SurveyID	Surveyor	Description	InstrumentNo
5/21/2009	RSID004212	Bennett, James C.	John E. & Karen S. Troth- Tract "F", Troth Type A Admin. Subd. Final Plat	2009015969.IN
9/28/2003	RSID004161	Gwinn, Jess A.	Powell Boundary Survey	
3/30/2008	RSID004117	Bennett, James C.	Type "A" Admin. Subd., John E. & Karen S. Troth, Tract "F".	
4/9/2008	RSID005498	Deckard, Eric Lee	Terry and Linda Johnson Boundary Survey	2008006719.IN
3/15/2010	RSID004124	Sheppard, Michael E.	162.64 +/- acre survey. Corner ID's BeanBI_S25 & BeanBI_U25, T11N-R02W, are included on plat.	2010003806.IN
10/19/2020	RSID004185	Deckard, Eric Lee	Swinney-Anderson Minor Subd. Final Plat	2020020042.IN



OFFICE OF THE MONROE COUNTY SURVEYOR • Trohn Enright-Randolph

501 N Morton Street Ste 205, Bloomington, IN 47404 • 812-349-2570 • surveyorsoffice@co.monroe.in.us

MONUMENT RECORD

Corner ID: **BeBI_M05**

Section Corner

Sections 3, 4, 9 & 10- T10N-R02W, 2nd P.M.
Bean Blossom Township, Monroe County, Indiana

Section 04 T10N-R02W	Section 03 T10N-R02W
Section 09 T10N-R02W	Section 10 T10N-R02W

ORIGINAL OR SUBSEQUENT SURVEY EVIDENCE FOUND BY THE MONROE COUNTY SURVEYORS OFFICE: *Include, search area or areas, search procedure, etc.*

Date of Field work/Search: 02/05/2024 & 08/07/2024 *By:* MES/JMG *Monument Found:* Set Rebar *BTs or Reference Objects Found:* No, but references established *Project #:* 24-001 *Field Book:* 55, Page 78 & 57, Page 4 *Notes:*

OTHER EVIDENCE: *Describe corner location relative to nearby features and how to reach the corner location – note fences, roads, timber cutting lines, mow lines, clearings, plantings, streams, topo changes, etc.*

The corner is on the Southeast side of a pole barn at 6955 West Brighton Road Ellettsville Indiana. There are no visible occupation lines in the immediate vicinity of the corner.

MONUMENT PRESERVATION: *Describe work done to preserve existing monument.*

Rebar was set. GPS coordinates were established on it. Visible references were made to the rebar. A rebar lite, a Mag Spike found in the road, a rebar found off the road and a mag hub nail set this survey were referenced to the set rebar. These monuments could be used to reestablish it, should it become obliterated.

THEORY OF LOCATION: *Describe the theory of location for acceptance of this monument. Include monument origin and associated uncertainty.*

The rebar was set online and proportionally between the nearest stones North and South of it, reduplicating the way Jess Gwinn reestablished it in a survey by him dated 09/28/2003, recorded in instrument #2003030618 in the Monroe County Recorder's Office, RSID004161 in the Monroe County Surveyors Office. In said survey, Mr. Gwinn's report states:

There are no perpetuation records for this corner. The position for this corner was calculated as a single proportional measurement between corners A and C as no monuments could be found on the section line within a mile to the east. The calculated corner position is inside the Wampler vegetable garden so no monument was set.

Mr. Gwinn's corner A on said survey is the stone at #274 (BeBI_M04) and his stone B, is the stone at #285 (BeBI_M07). The location reestablished per Mr. Gwinn's methodology was then accepted by at least 3 other surveyors consisting of James C Bennett, in a survey recorded in instrument #2009015969, in the Monroe County Recorder's Office, (RSID004212 in the Monroe County Surveyors Office), Eric Lee Deckard in a survey recorded in instrument #2020020042 in the Monroe County Recorder's Office, (RSID004185 in the Monroe County Surveyors Office), and myself (Michael E Sheppard) in a survey recorded in instrument #2010003806 in the Monroe County Recorder's Office (RSID004124 in the Monroe County Surveyors Office). Though this is not typically how I would reestablish a lost or obliterated Section corner, and I have pondered and questioned using the stone at said BeBI_M04 for proportionate measurement to reestablish the Section corner since it is not noted in its original establishment in legal survey book 2 pages 338 and 339 as having been set proportionally between the Section and quarter Section corner, but rather 80 poles (1320') South of BeBI_M03, I do see Mr. Gwinn's logic and with there being no other established Section corners to the East for 2 miles, (prior to my survey in said instrument #2010003806), my end conclusion is I have no better idea as to where the original location of this corner was. This location is in my opinion the most reliable evidence of the originally established location of the corner with an uncertainty of 3.5' north-south (since it is $\pm 1.6'$ North of the extension of a line from the Harrison monument set at the Southwest corner of Section 4 (#521 BeBI_I05) through the broken stone found at the South quarter corner of said Section 9, (#10475 BeBI_K05) and $\pm 3.3'$ North and 2.6 west of where proportionate measurement between the nearest quarter corners at BeBI_M03 and M07 would place it and 3' east-west, since it is $\pm 2.5'$ West of a straight line between the stones found at the East Quarter corner of Section 4 and the East Quarter corner of Section 9. It is noteworthy that the distances measured this survey between the stones at BeBI_M04 and BeBI_M07, differ from the measurements in Mr. Gwinn's survey by $\pm 1.6'$, which is likely primarily due to us finding the stones at said BeBI_M04 and BeBI_M07 being found leaning and us straightening them up before locating them.

GEODETIC COORDINATES: *Northing:* 1485085.6' *Eastings:* 3080863.5'

BASIS OF GEODETIC COORDINATES:

The basis of bearings is Grid North NAD83(2011), Indiana West Zone, Epoch 2010.0000, Geoid Model G2012BU7, Datum NAD83_NO_TRANS, US Survey Feet, derived from GPS observations utilizing the Indiana Real-Time Network (INCORS). Coordinate data was collected with a Javad Triumph LS Network Rover and/or with a Sokkia Set 510 Total Station radially from points located with GPS. Distances obtained with GPS have not been adjusted to ground. To adjust grid distances to ground distances multiply them by a scale factor of 1.000041208.



OFFICE OF THE MONROE COUNTY SURVEYOR • Trohn Enright-Randolph

501 N Morton Street Ste 205, Bloomington, IN 47404 • 812-349-2570 • surveyorsoffice@co.monroe.in.us

Page 3 of 4

MONUMENT RECORD

Corner ID: **BeBI_M05**

Section Corner

Sections 3, 4, 9 & 10- T10N-R02W, 2nd P.M.
Bean Blossom Township, Monroe County, Indiana

Section 04 T10N-R02W	Section 03 T10N-R02W
Section 09 T10N-R02W	Section 10 T10N-R02W

This document is not complete without the associated Corner Perpetuation plat and report of survey for Sections 4 or 9, Township 10 North Range 2 West by Michael E. Sheppard of the Monroe County Surveyor's Office.

CERTIFICATIONS:

