

Thomson Property Map



View from the Organized Living parking lot, looking south to the fenced in area. The fenced area is an open, relatively flat area characterized. There was formerly a house facility here, so some foundation material may remain.



View facing south toward the Thomson property from the Schulte drive. This northern border of the property is significantly higher than the road and is separated by a fence.



View from Strong Dr facing south toward the property. There is a small electric sub-station to the left of the road here.



Small electric substation just north of the property.



View south from substation along powerline right of way. This is characteristic of much of the property



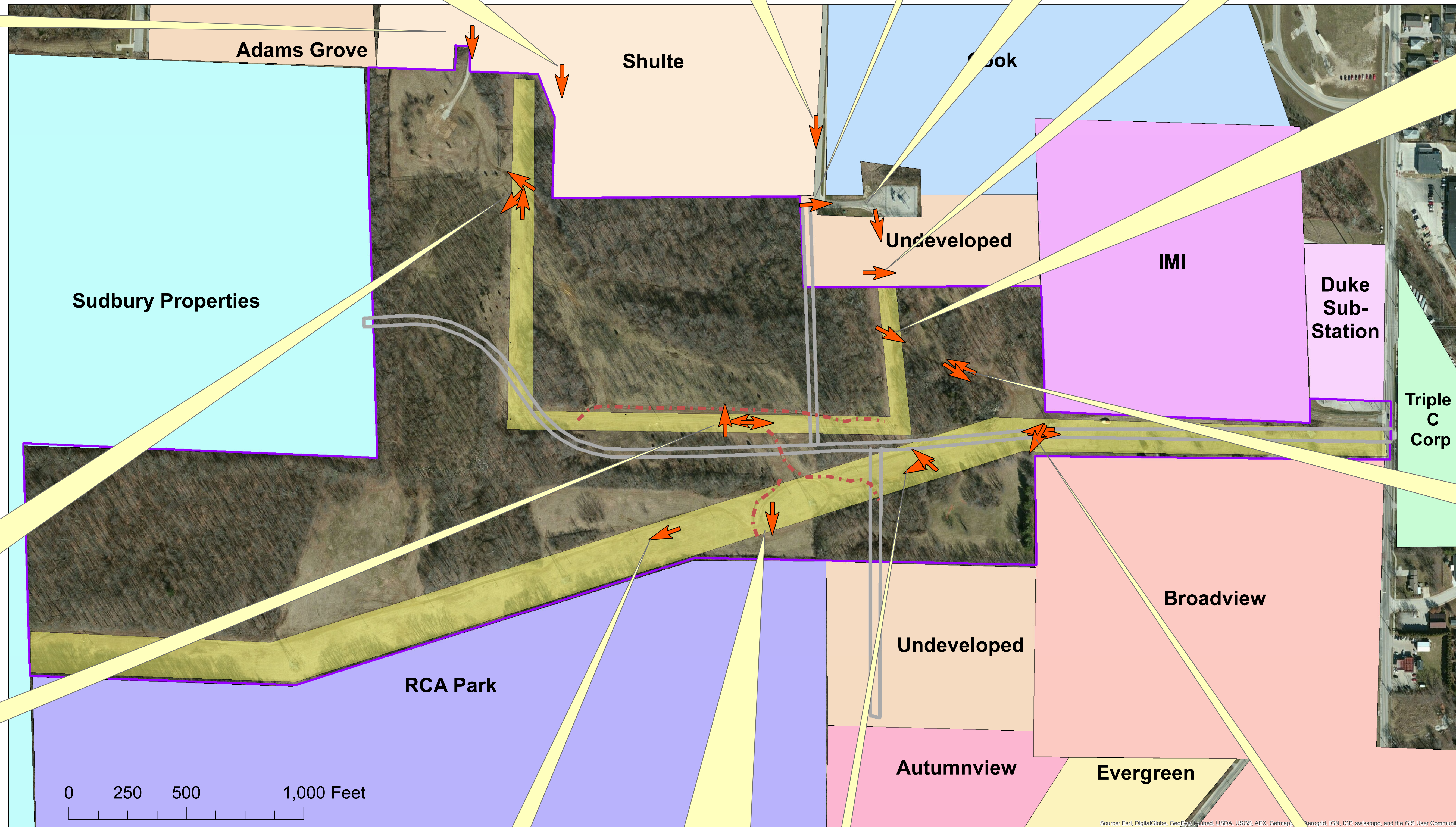
Standing in the power line cut, looking east, we see an example of the limestone rubble found in many of the forested areas on the property.



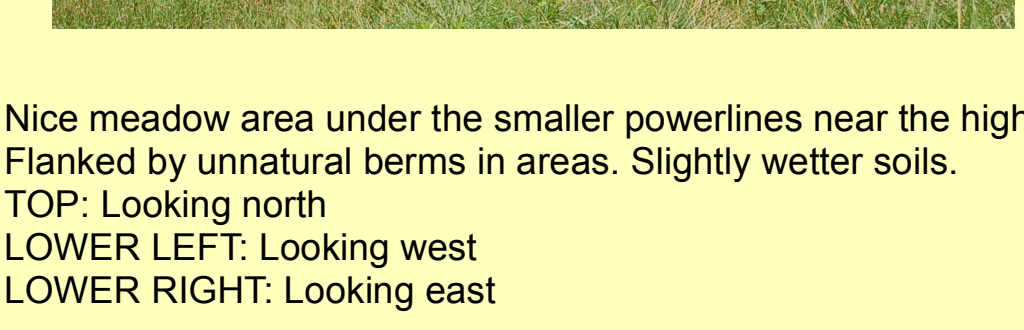
Standing in the power line cut, looking south-east. Young growth forest with a bit of clearing. This area has several old partially filled quarry pits.



TOP: Looking north along the small powerline cut. The overflow parking lot on the Organized Living property can be seen.
MIDDLE: Young regrowth forest can be seen to the west.
BOTTOM: The gate of a fence around this small northern section of land.



Standing in the clearing from the previous picture looking out either way (NW - top; SE - bottom). Immediately south of this point is the deepest quarry pit on the property.



Nice meadow area under the smaller powerlines near the highest elevation on the property. Some erosion problems. Flanked by unnatural berms in areas. Slightly wetter soils.
TOP: Looking north
LOWER LEFT: Looking west
LOWER RIGHT: Looking east



RCA Park can be seen from the hill.



RCA Park can be seen from the hill.



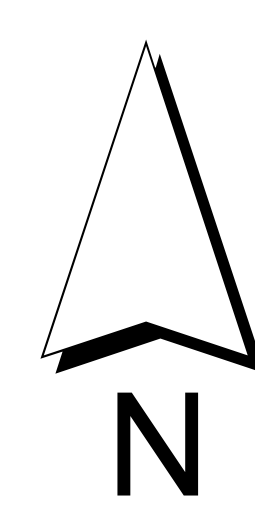
Looking directly at the corner of the smaller powerline right of way.



Looking directly along the powerline right of way. Major erosion on this slope, some ruts are a couple feet deep and wide.



TOP: Standing in large powerline cut looking west across the property. Expansive open sloping field, with 2 power line systems to negotiate.
MIDDLE: From same spot looking east. You can see Broadview neighborhood to the south and Rogers Rd straight ahead in the distance. There is a dirt "road" behind the houses.
BOTTOM: From the same spot looking south. The shady meadow west of the neighborhood.



- Legend**
- Photo sites
 - Eroded Ditch
 - Powerlines
 - Thomson Property Border
 - Potential roads as outlined in planning document

Created for the Environmental Quality and Sustainability Commission by Ian Yarbrough.
Photos by Ben Stidd of the Monroe County Soil and Water District