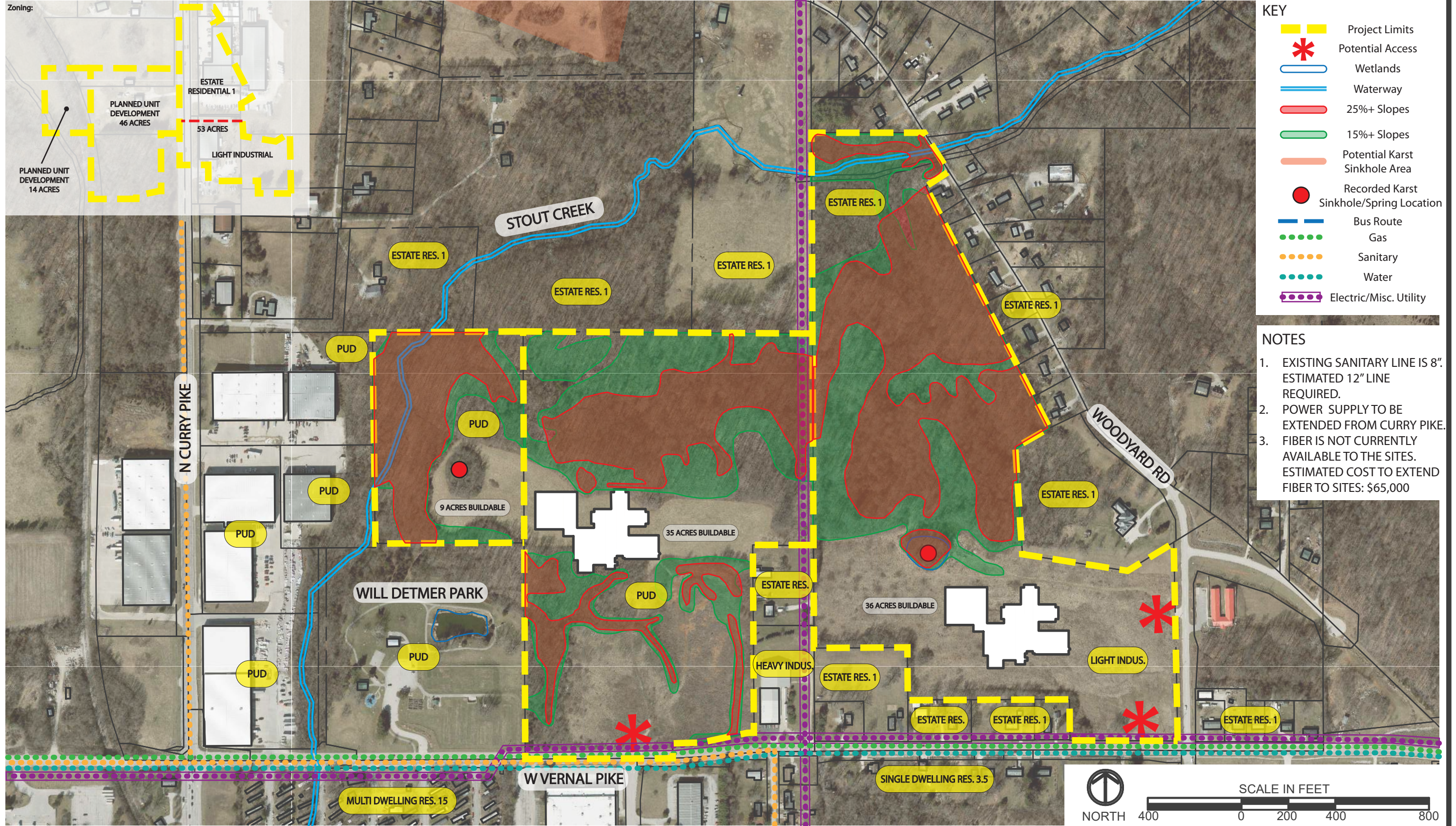


Zoning:



KEY

- Project Limits
- * Potential Access
- Wetlands
- Waterway
- 25%+ Slopes
- 15%+ Slopes
- Potential Karst Sinkhole Area
- Recorded Karst Sinkhole/Spring Location
- Bus Route
- Gas
- Sanitary
- Water
- Electric/Misc. Utility

- NOTES**
1. EXISTING SANITARY LINE IS 8". ESTIMATED 12" LINE REQUIRED.
 2. POWER SUPPLY TO BE EXTENDED FROM CURRY PIKE.
 3. FIBER IS NOT CURRENTLY AVAILABLE TO THE SITES. ESTIMATED COST TO EXTEND FIBER TO SITES: \$65,000

SCALE IN FEET

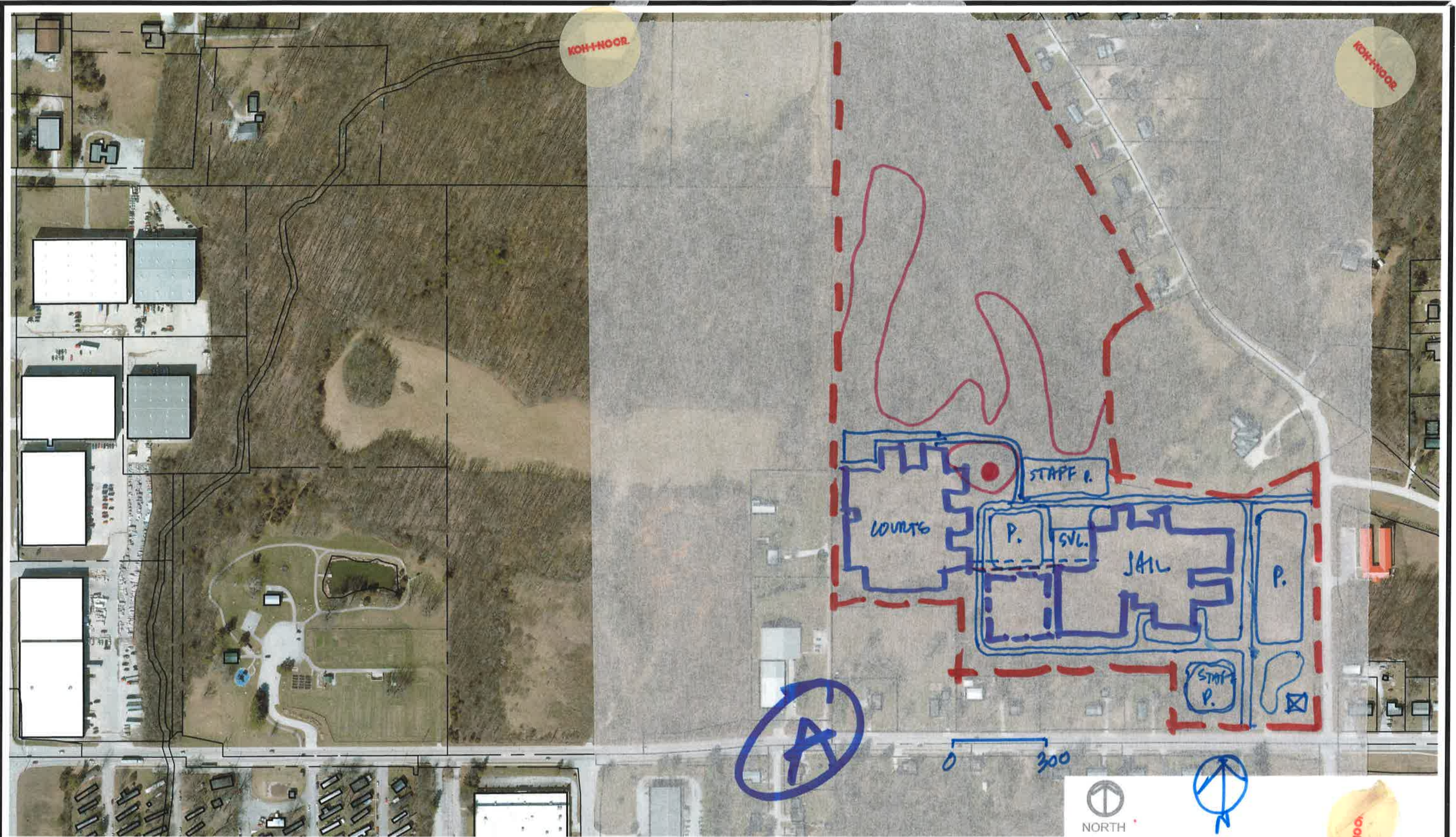
NORTH 4000200400800

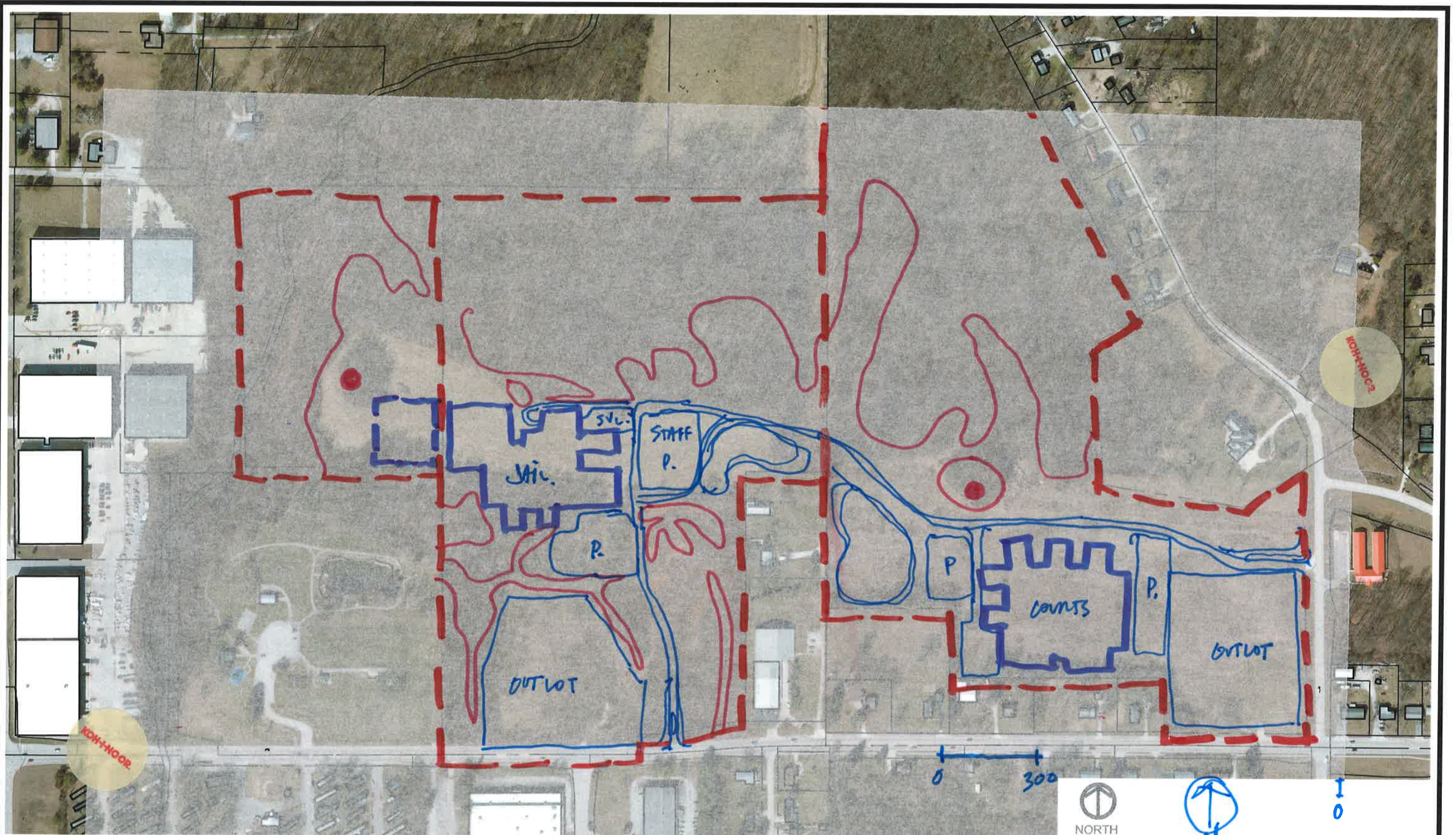


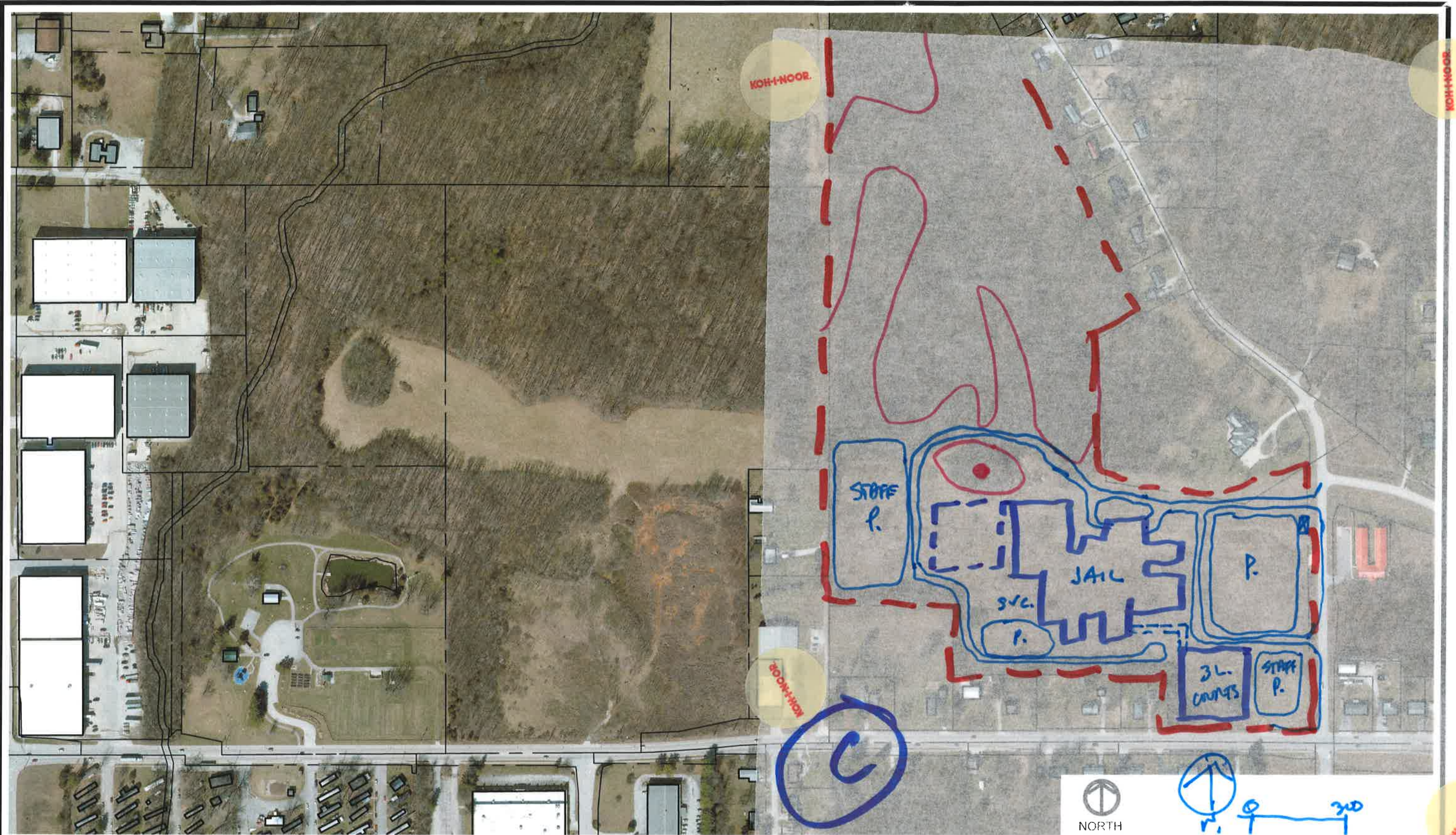
MONROE COUNTY, INDIANA
MONROE COUNTY JUSTICE CENTER
SITE INVENTORY AND ANALYSIS

VERNAL PIKE

| | |
|------------------------------|------------------|
| REMARKS: | FIGURE NUMBER |
| | 05 |
| DLZ PROJECT NO: 2363-1094-70 | SITE DEVELOPMENT |
| DATE: OCTOBER 4, 2024 | |







| | |
|------------------------------|------------------|
| REMARKS: | FIGURE NUMBER |
| | 05 |
| DLZ PROJECT NO: 2363-1094-70 | SITE DEVELOPMENT |
| DATE: AUGUST 27, 2024 | |